



UNIVERSITÀ  
DEGLI STUDI  
FIRENZE

## FLORE

# Repository istituzionale dell'Università degli Studi di Firenze

### **Sex-related differences in exercise performance and outcome of patients with hypertrophic cardiomyopathy**

Questa è la Versione finale referata (Post print/Accepted manuscript) della seguente pubblicazione:

*Original Citation:*

Sex-related differences in exercise performance and outcome of patients with hypertrophic cardiomyopathy / Ghiselli L.; Marchi A.; Fumagalli C.; Maurizi N.; Oddo A.; Pieri F.; Girolami F.; Rowin E.; Mazzarotto F.; Cicoira M.; Ribichini F.; Arretini A.; Targetti M.; Passantino S.; Cecchi F.; Marchionni N.; Maron M.; Mori F.; Olivotto I.. - In: EUROPEAN JOURNAL OF PREVENTIVE CARDIOLOGY. - ISSN 2047-4873. -

*Availability:*

The webpage <https://hdl.handle.net/2158/1180438> of the repository was last updated on 2019-12-17T18:28:05Z

*Published version:*

DOI: 10.1177/2047487319886961

*Terms of use:*

Open Access

La pubblicazione è resa disponibile sotto le norme e i termini della licenza di deposito, secondo quanto stabilito dalla Policy per l'accesso aperto dell'Università degli Studi di Firenze (<https://www.sba.unifi.it/upload/policy-oa-2016-1.pdf>)

*Publisher copyright claim:*

La data sopra indicata si riferisce all'ultimo aggiornamento della scheda del Repository FloRe - The above-mentioned date refers to the last update of the record in the Institutional Repository FloRe

(Article begins on next page)

# European Journal of Preventive Cardiology

## Sex-related differences in exercise performance and outcome of patients with hypertrophic cardiomyopathy

--Manuscript Draft--

<b>Manuscript Number:</b>	EJPC-D-19-00707R2
<b>Full Title:</b>	Sex-related differences in exercise performance and outcome of patients with hypertrophic cardiomyopathy
<b>Article Type:</b>	Full Research Paper
<b>Section/Category:</b>	Cardiovascular Disease
<b>Keywords:</b>	hypertrophic cardiomyopathy; Gender; exercise echocardiography; Exercise performance; Outcome.
<b>Corresponding Author:</b>	Luca Ghiselli, MD IRCCS Sacro Cuore Don Calabria Hospital ITALY
<b>Corresponding Author Secondary Information:</b>	
<b>Corresponding Author's Institution:</b>	IRCCS Sacro Cuore Don Calabria Hospital
<b>Corresponding Author's Secondary Institution:</b>	
<b>First Author:</b>	Luca Ghiselli, MD
<b>First Author Secondary Information:</b>	
<b>Order of Authors:</b>	Luca Ghiselli, MD Alberto Marchi, MD Carlo Fumagalli, MD Niccolò Maurizi, MD Andrea Oddo, MD Francesco Pieri, MD Francesca Girolami, BSc Ethan Rowin, MD Francesco Mazzarotto, PhD Mariantonietta Cicoira, MD, PhD Flavio Ribichini, MD, PhD Anna Arretini, MD Mattia Targetti, MD Silvia Passantino, MD Franco Cecchi, MD Niccolò Marchionni, MD Martin Maron, MD Fabio Mori, MD Iacopo Olivotto, MD
<b>Order of Authors Secondary Information:</b>	
<b>Manuscript Region of Origin:</b>	ITALY

**Abstract:**

**Aims.** Exercise performance is known to predict outcome in hypertrophic cardiomyopathy (HCM), but whether sex-related differences exist is unresolved. We explored whether functional impairment, assessed by exercise echocardiography, has comparable predictive accuracy in females and males with HCM.

**Methods.** We retrospectively evaluated 292 HCM patients (46±16 years, 72% males), consecutively referred for exercise echocardiography; 242 were followed for 5.9±4.2 years.

**Results.** Peak exercise capacity was 6.5±1.6 metabolic equivalents (METs). Sixty patients (21%) showed impaired exercise capacity (≤5 METs). Exercise performance was reduced in females, compared to males (5.6±1.6 vs. 6.9±1.5 METs, p<0.001; peak METs≤5 in 40% vs. 13%, p<0.001), largely driven by a worse performance in women >50 years of age. At multivariable analysis, female sex was independently associated with impaired exercise capacity (odds ratio [OR]: 4.67; 95% confidence interval [CI]: 1.83-11.90; p=0.001). During follow-up, 24 patients (10%) met the primary endpoint (a combination of cardiac death, heart failure requiring hospitalization, sustained ventricular tachycardia, appropriate implantable cardioverter defibrillator discharge, resuscitated sudden cardiac death and cardioembolic stroke). Event-free survival was reduced in females (p=0.035 vs. males). Peak METs were inversely related to outcome in males (HR per unit increase: 0.57, 95% CI: 0.39-0.84, p=0.004) but not in females (HR: 1.22, 95% CI: 0.66-2.24, p=0.53).

**Conclusions.** Female patients with HCM showed significant age-related impairment in functional capacity compared to males, particularly evident in post-menopausal age groups. While women were at greater risk of HCM-related complications and death, impaired exercise capacity predicted adverse outcome only in men. These findings suggest the need for sex-specific management strategies in HCM.

# Sex-related differences in exercise performance and outcome of patients with hypertrophic cardiomyopathy

Luca Ghiselli, MD<sup>a,b,c,\*</sup>, Alberto Marchi, MD<sup>c,\*</sup>, Carlo Fumagalli, MD<sup>c</sup>, Niccolò Maurizi, MD<sup>c</sup>, Andrea Oddo, MD<sup>d</sup>,  
Francesco Pieri, MD<sup>d</sup>, Francesca Girolami, BSc<sup>e</sup>, Ethan Rowin, MD<sup>f</sup>, Francesco Mazzarotto, PhD<sup>c,g,h</sup>,  
Mariantonietta Cicoira, MD, PhD<sup>b</sup>, Flavio Ribichini, MD, PhD<sup>b</sup>, Anna Arretini, MD<sup>c</sup>, Mattia Targetti, MD<sup>c</sup>, Silvia  
Passantino, MD<sup>e</sup>, Franco Cecchi, MD<sup>i</sup>, Niccolò Marchionni, MD<sup>g</sup>, Martin Maron, MD<sup>f</sup>, Fabio Mori, MD<sup>d</sup>, Iacopo  
Olivotto, MD<sup>c</sup>

\* the two authors contributed equally to this work.

<sup>a</sup> Division of Cardiology, IRCCS Sacro Cuore Don Calabria Hospital, Negrar, Verona, Italy

<sup>b</sup> Department of Medicine, Section of Cardiology, University of Verona, Verona, Italy

<sup>c</sup> Cardiomyopathy Unit, Careggi University Hospital, Florence, Italy

<sup>d</sup> Cardiology Department, Careggi University Hospital, Florence, Italy

<sup>e</sup> Department of Pediatric Cardiology, Meyer Children's Hospital, Florence, Italy

<sup>f</sup> Hypertrophic Cardiomyopathy Center, Division of Cardiology, Tufts Medical Center, Boston, MA, USA

<sup>g</sup> Department of Clinical and Experimental Medicine, University of Florence, Italy

<sup>h</sup> Cardiovascular Research Centre, Royal Brompton and Harefield NHS Foundation Trust and Imperial College London, London, UK

<sup>i</sup> Department of Cardiology, S. Luca Hospital, Istituto Auxologico Italiano, Milano, Italy

## Corresponding author:

Luca Ghiselli, MD

Division of Cardiology, IRCCS Sacro Cuore Don Calabria Hospital, Via Don A. Sempredoni 5 - 37024 Negrar, Verona, Italy. Tel: 0039 456013111; Fax: 0039 457500480; E-mail: luca.ghiselli85@gmail.com

**Word count:** 3236

**Total numbers of Tables:** 3

**Total numbers of Figures:** 2

**Total numbers of Supplementary Files:** 3 (2 figures and 1 table).

## ABSTRACT

**Aims.** Exercise performance is known to predict outcome in hypertrophic cardiomyopathy (HCM), but whether sex-related differences exist is unresolved. We explored whether functional impairment, assessed by exercise echocardiography, has comparable predictive accuracy in females and males with HCM.

**Methods.** We retrospectively evaluated 292 HCM patients (46±16 years, 72% males), consecutively referred for exercise echocardiography; 242 were followed for 5.9±4.2 years.

**Results.** Peak exercise capacity was 6.5±1.6 metabolic equivalents (METs). Sixty patients (21%) showed impaired exercise capacity (≤5 METs). Exercise performance was reduced in females, compared to males (5.6±1.6 vs. 6.9±1.5 METs, p<0.001; peak METs≤5 in 40% vs. 13%, p<0.001), largely driven by a worse performance in women >50 years of age. At multivariable analysis, female sex was independently associated with impaired exercise capacity (odds ratio [OR]: 4.67; 95% confidence interval [CI]: 1.83-11.90; p=0.001). During follow-up, 24 patients (10%) met the primary endpoint (a combination of cardiac death, heart failure requiring hospitalization, sustained ventricular tachycardia, appropriate implantable cardioverter defibrillator discharge, resuscitated sudden cardiac death and cardioembolic stroke). Event-free survival was reduced in females (p=0.035 vs. males). Peak METs were inversely related to outcome in males (HR per unit increase: 0.57, 95% CI: 0.39-0.84, p=0.004) but not in females (HR: 1.22, 95% CI: 0.66-2.24, p=0.53).

**Conclusions.** Female patients with HCM showed significant age-related impairment in functional capacity compared to males, particularly evident in post-menopausal age groups. While women were at greater risk of HCM-related complications and death, impaired exercise capacity predicted adverse outcome only in men. These findings suggest the need for sex-specific management strategies in HCM.

**Key Words:** Hypertrophic Cardiomyopathy; Sex; Exercise echocardiography; Exercise performance; Outcome.

## Introduction

Hypertrophic cardiomyopathy (HCM) is an autosomal dominant disease of the myocardium with incomplete penetrance and heterogeneous presentation and outcome<sup>1-4</sup>. Despite an equal expected prevalence by sex, women are less represented than men in HCM cohorts, ranging from 45% to 22%<sup>5-8</sup>. Regardless of ethnicity, females are generally older, with more advanced disease at diagnosis and greater likelihood of heart failure progression compared to males<sup>5,6,8-10</sup>; furthermore, female sex could be a minor risk factor for cardiovascular death in childhood HCM<sup>11</sup>. Reasons for such discrepancies are still unknown, and may reflect sex-related differences in the pathophysiology of HCM, ultimately relevant to risk stratification and management<sup>12</sup>. Exercise performance is known to predict outcome in HCM<sup>13-16</sup> but, unlike what has been shown in other cardiovascular diseases such as pulmonary arterial hypertension<sup>17</sup>, its clinical value with regard to sex remains unexplored. Specifically, the question whether a worse outcome in women is predicted by more profound functional impairment, compared to men, has not been previously addressed. In the present study, based on a large single-center HCM cohort, we therefore evaluated sex-related functional capacity, assessed by exercise echocardiography, and its relevance to outcome.

## Methods

### Study population

In this single center study, we retrospectively evaluated 292 adults (>18 years) with a clinical diagnosis of HCM, consecutively referred to our center for exercise echocardiography between January 2004 and June 2016, including 211 men and 81 women. HCM was diagnosed in the presence of non-dilated and hypertrophied left ventricle (end-diastolic wall thickness  $\geq 15$  mm at M-mode or 2D echocardiography), in absence of another cardiac or systemic disease capable of producing that magnitude of left ventricle hypertrophy<sup>3</sup>. Patients with known obstructive coronary artery disease were excluded from the study. Genetic testing was performed in 224 patients by sequencing of 8 sarcomeric genes including myosin binding protein C (MYBPC3),  $\beta$ -myosin heavy chain (MYH7), essential and regulatory myosin light chains (MYL2, MYL3), cardiac troponin T (TNNT2), cardiac troponin I (TNNI3),  $\alpha$ -tropomyosin (TPM1), and cardiac actin

1 (ACTC), as well as 4 genes associated with non-sarcomeric HCM mimics: GLA (for Fabry's disease), LAMP2  
2 (for Danon's disease), PRKAG2 (for PRKAG2 cardiomyopathy) and TTR for wild-type transthyretin  
3 amyloidosis<sup>18,19</sup>. Patients with these 4 HCM mimics were excluded from the study. Our institutional review  
4 board authorized use of this database according to the principles outlined in the Declaration of Helsinki.  
5  
6 Baseline characteristics of the study population are reported in Table 1. Supplementary Figure A summarizes  
7 the study design.  
8

### 9 Resting echocardiography

10  
11  
12  
13  
14  
15  
16  
17  
18 Standard echocardiographic studies were performed using commercially available instruments. Peak  
19 instantaneous left ventricular outflow tract (LVOT) gradient was measured at rest (and with the Valsalva  
20 maneuver) by continuous-wave Doppler interrogation in the apical 5-chamber view, taking care to avoid  
21 contamination of the waveform by the mitral regurgitation jet<sup>20</sup>. Resting LVOT obstruction was defined by a  
22 peak pressure gradient  $\geq 30$  mmHg at baseline<sup>3,20</sup>. Mitral regurgitation was graded as none or trivial, mild,  
23 moderate or severe using multiple criteria<sup>21</sup>. Left ventricular (LV) volume, LV ejection fraction and left atrial  
24 volume were measured from the apical view, using the biplane Simpson's rule method. Using M-Mode and  
25 2D, we measured LV diameter, left atrial end-systolic diameter and maximal end-diastolic LV wall thickness.  
26  
27 The peak velocity of early (E) and late (A) transmitral flow waves and peak early diastolic mitral annular  
28 velocity were measured as recommended<sup>22</sup>; for the assessment of diastolic function we used lateral E' and  
29 not average for its best correlation with functional capacity and because septal E' is disproportionately  
30 reduced in most patients due to the typical localization of asymmetric LV hypertrophy<sup>23-25</sup>.  
31  
32  
33  
34  
35  
36  
37  
38  
39  
40  
41  
42  
43  
44  
45  
46  
47  
48  
49

### 50 Stress echocardiography

51  
52  
53  
54 Routinely used medications were not withdrawn before the test. Maximum, symptom-limited  
55 exercise tests were performed on a bicycle ergometer in the semi-supine position, with stepwise 25W  
56 increments every 2 minutes. Exercise echocardiography was performed under basal conditions and serially  
57 every 2 minutes during exercise to identify and grade mitral regurgitation and estimate LVOT gradient with  
58  
59  
60  
61  
62  
63  
64  
65

1 continuous-wave Doppler. Clinically relevant exercise-induced LVOT obstruction was defined by a peak  
2 gradient  $\geq 50$  mmHg<sup>20</sup>. Data pertaining diastolic function reserve and estimated pulmonary artery pressures  
3 on effort were not routinely collected. Wall motion abnormalities were noted, but were present only in a  
4 small minority (<5%) and were therefore not included in our analysis.  
5  
6  
7  
8  
9

10 A 12-lead electrocardiogram was monitored continuously and recorded at baseline, at each minute  
11 during exercise, and after exercise. Arterial blood pressure was measured with a sphygmomanometer at  
12 baseline and every 2 minutes during exercise and in the post-exercise phase. Abnormal blood pressure  
13 response was defined by either a failure of systolic blood pressure to raise  $>20$  mmHg or any fall in systolic  
14 blood pressure during exercise.  
15  
16  
17  
18  
19  
20  
21  
22

23 Patients were encouraged to perform maximally to achieve their expected heart rate. The maximum  
24 predicted heart rate was calculated as 220 minus patient's age, and heart rate attained was expressed as the  
25 percentage of predicted. Exercise was terminated when fatigue, dyspnea, chest pain, clinically relevant  
26 arrhythmia or hypotension intervened. Peak exercise was defined as the maximum workload attained before  
27 discontinuation. Peak functional capacity was extrapolated to metabolic equivalents (METs)<sup>13,14,26</sup>, with 1  
28 MET defined as the energy expended at rest, equivalent to an oxygen consumption of 3.5 ml/kg of body  
29 weight/ minute, as recommended<sup>27</sup>.  
30  
31  
32  
33  
34  
35  
36  
37  
38  
39

#### 40 Study endpoints

41  
42  
43 Patients were followed up on an annual basis, or more often if clinically required. The primary  
44 endpoint was a combination of cardiac death, heart failure requiring hospitalization, sustained ventricular  
45 tachycardia, appropriate implantable cardioverter defibrillator (ICD) discharge or resuscitated sudden cardiac  
46 death and cardioembolic stroke. The secondary endpoint included the primary endpoint, plus new onset  
47 atrial fibrillation or symptomatic progression to New York Heart Association (NYHA) functional classes III/IV.  
48  
49  
50  
51  
52  
53  
54  
55 In patients meeting both endpoints, time to the first event was considered.  
56  
57

#### 58 Statistical Methods

Continuous variables were expressed as mean  $\pm$  SD, while categorical variables were reported as number of cases and percentage. The unpaired Student's T test was used for comparison of normally distributed data after screening for normality. The chi-square test or Fischer's exact test, as appropriate, were utilized to compare non-continuous variables. For the purpose of the present study, impaired exercise capacity was defined by a peak performance  $\leq$ 5 METs, i.e. at or below the threshold identifying the lowest quartile for our cohort. Univariable and multivariable predictors of impaired exercise capacity were identified by binary logistic regression analysis; data are reported as odds ratio (OR) with 95% confidence interval (CI). To identify predictors of outcome, a Cox proportional hazard regression model was used; data are reported as hazard ratio (HR) with 95% CI. Multivariate analyses were performed with a stepwise forward regression model, and variables with a p value  $\leq$ 0.05 based on univariate analysis were entered into the model. Survival curves were constructed according to the Kaplan-Meier method, and comparisons were performed using the log-rank test. All p values are two-sided and considered significant when  $<$ 0.05. Calculations were performed using the SPSS 24.0 software (Armonk, NY: IBM Corp., USA).

## Results

### Baseline characteristics and sex

Of the 292 HCM study patients (mean age  $46\pm 16$  years, maximum LV wall thickness  $21\pm 5$  mm), 211 (72%) were males and 81 (28%) females (Table 1). Forty-two patients (14%) had resting LVOT obstruction in basal conditions and 8 (3%) had prior history of surgical myectomy or alcohol septal ablation. The majority (n=270, 93%) were in NYHA class I or II. Of the 224 patients who underwent genetic testing, 137 (61%) carried one or more pathogenic/likely pathogenic sarcomere gene mutations.

Compared to men, women were older ( $51\pm 16$  vs.  $44\pm 17$  years,  $p=0.001$ ) and more often complained of dyspnea (NYHA class  $>$ I) and angina (Table 1). Furthermore, women had LVOT obstruction at rest less frequently (7% vs 17% in males,  $p=0.04$ ), had smaller LV end-diastolic volume and volume index ( $p<0.001$  for both) and had indirect evidence of higher LV filling pressure (lateral E/E'  $9.4\pm 4.5$  vs.  $7.6\pm 3.4$  in males,

p=0.002). All other baseline features including the prevalence of genotype positive individuals, BMI, maximal LV wall thickness, left atrial volume index and LV ejection fraction were comparable (Table 1).

### Comparison of exercise performance

Mean exercise time for the whole cohort was 11±4 minutes, and peak exercise capacity was 6.5±1.6 METs; 60 patients (21%) achieved ≤5 METs reflecting impaired exercise capacity (Table 2). There was no sex difference in the percentage of maximum predicted heart rate achieved (77±12% for males and 77±13% for females, p=0.82). Exhaustion was the most common reason for interruption and there were no significant complications during or after the test. During exercise, 82 patients (28%) developed exercise-induced LVOT obstruction ≥50 mmHg, 13 (4%) developed severe mitral regurgitation due to systolic anterior motion (SAM) of the mitral valve and 38 (13%) showed an abnormal blood pressure response.

Exercise capacity was significantly lower in women, compared to men (peak METs 5.6±1.6 vs. 6.9±1.5, respectively, p<0.001; exercise time 8±3 vs 12±4 minutes, respectively, p<0.001), largely driven by the inferior results observed in women >50 years of age (Figure 1A). Conversely, peak METs were comparable between sexes in the age classes ≤30, 31-40 and 41-50 years. The proportion of patients with impaired exercise capacity (≤5 METs) was significantly larger in women than in men (n=32, or 40% vs. n=28, or 13%, respectively; p<0.001; Figure 1B). Of the 32 women achieving ≤5 METs, only 4 (12%) had exercise-induced LVOT gradients >50 mmHg, as opposed to 11 of the 28 men (39%; p=0.035). At the other end of the exercise performance spectrum, 103 men (49%) achieved ≥7 METs compared to only 15 women (18%) (p<0.001).

At multivariable logistic regression analysis, female sex proved to be an independent predictor of impaired exercise capacity (≤ 5 METs at peak), together with BMI, NYHA functional class, presence of resting LVOT obstruction and small LV cavity dimensions (defined as an end-diastolic volume in the lowest tertile for the study group; Table 3). Specifically, female sex was independently associated with an almost 5-fold increase in likelihood of impaired exercise capacity (OR: 4.67; 95% CI: 1.83-11.90; p = 0.001).

### Outcome

1  
2 Fifty patients were excluded from survival analysis due to a follow-up <1 year. The remaining 242  
3 HCM patients were followed over a median follow-up of 5.9±4.2 years after exercise echocardiography  
4 (5.7±4.1 years in males vs. 6.3±4.2 in females; p=0.39). Of the 242 patients, 24 (10%) met the primary  
5 endpoint and 55 (23%) the secondary endpoint (Supplementary Table A). The breakdown of individual  
6 endpoints was as follows: 6 cardiovascular deaths (2%), 2 episodes of sustained ventricular tachycardia (1%),  
7 1 resuscitated sudden cardiac death (0.4%), 9 heart failure episodes requiring hospitalization (4%) and 13  
8 cardioembolic strokes (5%). In addition, 40 patients developed new onset atrial fibrillation (16%) and 8  
9 progressed to NYHA class III/IV (3%).  
10  
11  
12  
13  
14  
15  
16  
17  
18

19 Event-free survival for both the primary and secondary endpoint was significantly lower in women  
20 compared with men (Figure 2): event rates for the primary endpoint at 1, 3 and 5 years were 3%, 9% and 12%  
21 in females vs. 1%, 2% and 3% in males, respectively (p=0.035). At univariate analysis, female sex (HR: 2.32,  
22 95% CI: 1.04-5.22, p=0.04) and lower peak METs (HR per unit increase: 0.68, 95% CI: 0.53-0.87, p=0.003)  
23 predicted the primary endpoint. Similar results were observed for the secondary endpoint (HR: 2.13, 95% CI:  
24 1.24-3.66, p=0.006 for female sex; HR: 0.73, 95% CI: 0.62-0.86, p<0.001 for METs). At multivariate analysis  
25 (including age, NYHA class and LVOT obstruction at rest) only lower peak METs were independently  
26 associated with outcome (HR per unit increase: 0.68, 95% CI: 0.53-0.87, p=0.003 for the primary endpoint;  
27 HR: 0.80, 95% CI 0.67-0.95, p=0.013 for the secondary endpoint).  
28  
29  
30  
31  
32  
33  
34  
35  
36  
37  
38  
39  
40  
41

42 When sexes were analyzed separately, peak METs were inversely related to outcome in males (HR  
43 per unit increase: 0.57, 95% CI: 0.39-0.84, p=0.004 for primary endpoint) but not in females (HR: 1.22, 95%  
44 CI: 0.66-2.24, p=0.53). Among males, a peak exercise METs <7 proved the best threshold for the prediction  
45 of adverse events (Supplementary Figure B), with very high sensitivity (100%) but low specificity (50%);  
46 negative and positive predictive values were 100% and 14%, respectively.  
47  
48  
49  
50  
51  
52  
53

## 54 Discussion

55 Our main result was the novel finding that exercise performance is more diffusely impaired in HCM  
56 women compared to men, particularly after mid-life and, in the present series, largely unrelated to  
57  
58  
59  
60  
61  
62  
63  
64  
65

1 obstruction. Furthermore, we found that exercise performance, previously shown to predict outcome in HCM  
2 <sup>13-16</sup>, seems to have true predictive value in male patients only, while the occurrence of clinical endpoints in  
3  
4 females was largely independent of exercise capacity. Of note, females showed reduced exercise capacity  
5  
6 both in terms of absolute METs and exercise time and were almost four time more represented (40% vs 13%)  
7  
8 in the lowest exercise capacity group (peak METs  $\leq 5$ ) compared to males. Conversely, the occurrence of  
9  
10 exercise-induced obstruction was lower in women, suggesting that - while a substantial proportion of HCM  
11  
12 men may owe their reduced performance to provokable LVOT gradients - this is often not the case in women.  
13  
14 Rather, these findings suggest more severe degrees of myocardial dysfunction in female patients, which  
15  
16 become overt after mid-life. Indeed, the impact of age on exercise performance was striking in women with  
17  
18 HCM. Despite female sex could be a minor risk factor for cardiovascular death since childhood<sup>11</sup>, limited  
19  
20 discrepancy in peak METs was seen in younger age categories, while the sex gap became evident in the group  
21  
22 >50 years (Figure 1A). This is probably due to the fact that older women had more advanced heart failure at  
23  
24 time of referral for HCM evaluation compared to men, reflected in a higher prevalence of congestive  
25  
26 symptoms (NYHA class II or III) at the time of enrollment. Such finding leads to speculate that postmenopausal  
27  
28 endocrine changes may impact the phenotypic expression and clinical course of women with HCM, consistent  
29  
30 with prior observations by our group<sup>5</sup>, including loss of the protective role of estrogens seen in animal  
31  
32 models<sup>28,29</sup>. In addition, the contribution of a more sedentary lifestyle in reducing exercise tolerance of older  
33  
34 women might be hypothesized<sup>30</sup>.

35  
36  
37  
38  
39  
40  
41  
42  
43  
44 The fact that exercise impairment appears related to intrinsic myocardial dysfunction, rather than  
45  
46 dynamic obstruction, appears relevant to the adverse prognosis of HCM women, as their form of heart failure  
47  
48 seems to be less "reversible"<sup>7,31</sup>. Heart failure secondary to dynamic obstruction is known to be associated  
49  
50 with no or minimal LV fibrosis and to have a favorable natural history following successful relief of the  
51  
52 gradient<sup>31</sup>. Conversely, heart failure in the context of primary myocardial dysfunction, generally subtended  
53  
54 by diffuse microvascular dysfunction and fibrosis<sup>2</sup>, tends to progress despite optimal care, reflecting a  
55  
56 substantial lack of disease-modifying drugs for HCM<sup>32</sup>.

1  
2  
3  
4  
5  
6  
7  
8  
9  
10  
11  
12  
13  
14  
15  
16  
17  
18  
19  
20  
21  
22  
23  
24  
25  
26  
27  
28  
29  
30  
31  
32  
33  
34  
35  
36  
37  
38  
39  
40  
41  
42  
43  
44  
45  
46  
47  
48  
49  
50  
51  
52  
53  
54  
55  
56  
57  
58  
59  
60  
61  
62  
63  
64  
65

Furthermore, while baseline phenotypic expression limited to LV hypertrophy did not differ between sexes, LV cavity size, considered genetically determined in HCM<sup>33,34</sup>, was significantly smaller in women<sup>35</sup>, even when indexed per body size, suggesting more severe disease involvement. A small LV cavity size, defined as an end-diastolic volume in the lowest tertile, proved to be an independent predictor of exercise capacity in our cohort, consistent with the recent report by Axelsson et al.<sup>36</sup>. For any given value of ejection fraction, a smaller LV cavity is associated with reduced stroke volume, which may account for impaired exercise capacity. In addition, the combination of small cavity dimensions and LV hypertrophy may synergistically determine higher diastolic filling pressures and diastolic dysfunction during effort, emphasizing the role of exercise-induced diastolic dysfunction as a main determinant of functional capacity in HCM<sup>37</sup>.

The main clinical implication of our study is that exercise performance evaluated by stress echocardiography confirms its value in the prognostication of male HCM patients but does not seem to have a similar role in women. Specifically, no male patients with a peak exercise capacity above 7 METs met the primary endpoint, confirming the recent observation by Desai et al.<sup>14</sup>. A potential interpretation is that the male HCM spectrum is more heterogeneous and includes patients with truly well compensated forms of disease, deserving reassurance. Conversely, females exhibit a more diffuse and severe clinical instability and their risk of adverse outcome cannot be ruled out as confidently by preserved exercise capacity. These data require confirmation in larger datasets and, in a broader perspective, point out the need for further research addressing the sex gap in survival in HCM. For example, a recent randomized trial showed that moderate-intensity exercise produces a significant increase in exercise capacity in HCM patients<sup>30</sup>. It is intriguing to speculate that tailored activities and well-conducted training programs might provide a safe and effective measure to overcome functional impairment associated with sex in post-menopausal women.

The present study has several limitations. A notable one, shared by similar studies<sup>38</sup>, is that only 28% of our patients were females, suggesting underrepresentation of women in exercise testing referral. By comparison, the prevalence of females in the whole Florence cohort is 41%. This may reflect the fact that females presented at an older age, had more severe limitations and presented obstruction at rest more frequently, compared to men, thus representing less suitable candidates for stress testing<sup>5,8</sup>. Conversely,

1 males are more often young and active, exerting more pressure upon physicians in order to be allowed  
2 sporting activities, resulting in preferential referral for exercise testing<sup>39</sup>. In general, however, female  
3 underrepresentation may also reflect a complex mix of social bias, reduced patient awareness<sup>40</sup> and reduced  
4 access to medical screening programs <sup>41</sup>.  
5  
6  
7  
8  
9

10 In the present study, we chose to measure exercise capacity by estimated metabolic equivalents  
11 (METs) from external work rate. Although calculated METs are less robust than peak VO2 values by  
12 cardiopulmonary testing, they are easier to obtain and widely usable in clinical practice. Previous studies<sup>14</sup>  
13 expressed functional capacity as a percentage of age and sex predicted METs. However, this approach  
14 requires the use of additional dated formulas derived from healthy population, that could definitely add bias.  
15  
16 Furthermore, functional capacity expressed as an absolute value has an important role in prognostic  
17 stratification, as already shown in other clinical settings such as pulmonary arterial hypertension, pre-  
18 operative cardiac risk evaluation and perioperative management of patients undergoing non-cardiac surgery  
19  
20  
21  
22  
23  
24  
25  
26  
27  
28  
29 <sup>42,43</sup>.

30  
31  
32 In our retrospective study we used exercise echo mainly to assess provokable LV outflow tract  
33 obstruction, while diastolic function reserve and pulmonary artery systolic pressure during stress were not  
34 routinely available (as noted in the Methods section on page 5). Regional wall motion analysis was performed  
35 in all, but abnormalities proved rare (<5%), whereas ST-T segment abnormalities during effort were more  
36 common but are notoriously nonspecific in HCM. Therefore, we were not able to dissect the pathophysiologic  
37 basis of sex-related differences in performance. These issues will be addressed in a large-scale prognostic  
38 validation of stress echo in HCM recently started as a specific subproject of the “SE 2020” study endorsed by  
39 the Italian Society of Echocardiography <sup>44</sup>.  
40  
41  
42  
43  
44  
45  
46  
47  
48  
49  
50

51  
52 Finally, due to the low event rate of hard events during follow-up - a well-established feature of the  
53 natural history of HCM, the study unavoidably employed less robust, combined endpoints, consistent with  
54 prior literature<sup>13,14</sup>.  
55  
56  
57  
58  
59  
60  
61  
62  
63  
64  
65

1  
2 In conclusion, female patients with HCM showed significant age-related impairment in functional  
3 capacity compared to males, particularly evident in post-menopausal age groups. While women were at  
4 greater risk of HCM-related complications and death, impaired exercise capacity predicted adverse outcome  
5 only in men. These findings suggest the need for sex-specific management strategies in HCM.  
6  
7  
8  
9

## 10 Acknowledgments and Funding

11  
12 IO was supported by the Italian Ministry of Health (Left ventricular hypertrophy in aortic valve disease  
13 and hypertrophic cardiomyopathy: genetic basis, biophysical correlates and viral therapy models" [RF-2013-  
14 02356787]), and NET-2011-02347173 (Mechanisms and treatment of coronary microvascular dysfunction in  
15 patients with genetic or secondary left ventricular hypertrophy); and by Telethon Italy (GGP13162); and by  
16 the ToRSADE project (FAS-Salute 2014, Regione Toscana).  
17  
18  
19  
20  
21  
22  
23  
24  
25

## 26 Disclosures

27 The authors have nothing to disclose and report no relationships that could be construed as a conflict of interest.  
28  
29

## 30 Authors contribution

31 IO, LG, AM, FC, OA, PA, GF, ER, FM, MC, FR, AA, MT, SP, FP, MM contributed to the conception or design of the  
32 work or to the acquisition of data. IO, CF, NM, LG, AM contributed to the analysis and/or interpretation of results.  
33  
34 LG, AM, CF and NM drafted the manuscript. IO, FG, CF and NM, critically revised the manuscript. All gave final  
35 approval and agree to be accountable for all aspects of work ensuring integrity and accuracy.  
36  
37  
38  
39  
40  
41  
42  
43  
44  
45  
46  
47  
48  
49  
50  
51  
52  
53  
54  
55  
56  
57  
58  
59  
60  
61  
62  
63  
64  
65

## REFERENCES

1. Maron BJ, Ommen SR, Semsarian C, et al. Hypertrophic cardiomyopathy: present and future, with translation into contemporary cardiovascular medicine. *J Am Coll Cardiol* 2014; 64: 83–99.
2. Olivotto I, Cecchi F, Poggesi C, et al. Patterns of disease progression in hypertrophic cardiomyopathy: an individualized approach to clinical staging. *Circ Heart Fail* 2012; 5: 535–546.
3. Elliott PM, Anastasakis A, Borger MA, et al. 2014 ESC Guidelines on diagnosis and management of hypertrophic cardiomyopathyThe Task Force for the Diagnosis and Management of Hypertrophic Cardiomyopathy of the European Society of Cardiology (ESC). *Eur Heart J* 2014; 35: 2733–2779.
4. Gersh BJ, Maron BJ, Bonow RO, et al. 2011 ACCF/AHA guideline for the diagnosis and treatment of hypertrophic cardiomyopathy: a report of the American College of Cardiology Foundation/American Heart Association Task Force on Practice Guidelines. *Circulation* 2011; 124: e783-831.
5. Olivotto I, Maron MS, Adabag AS, et al. Gender-related differences in the clinical presentation and outcome of hypertrophic cardiomyopathy. *J Am Coll Cardiol* 2005; 46: 480–487.
6. Kubo T, Kitaoka H, Okawa M, et al. Gender-specific differences in the clinical features of hypertrophic cardiomyopathy in a community-based Japanese population: results from Kochi RYOMA study. *J Cardiol* 2010; 56: 314–319.
7. Maron MS, Olivotto I, Betocchi S, et al. Effect of left ventricular outflow tract obstruction on clinical outcome in hypertrophic cardiomyopathy. *N Engl J Med* 2003; 348: 295–303.
8. Geske JB, Ong KC, Siontis KC, et al. Women with hypertrophic cardiomyopathy have worse survival. *Eur Heart J* 2017; 1–9.
9. Terauchi Y, Kubo T, Baba Y, et al. Gender differences in the clinical features of hypertrophic cardiomyopathy caused by cardiac myosin-binding protein C gene mutations. *J Cardiol* 2015; 65: 423–428.

1  
2  
3  
4  
5  
6  
7  
8  
9  
10  
11  
12  
13  
14  
15  
16  
17  
18  
19  
20  
21  
22  
23  
24  
25  
26  
27  
28  
29  
30  
31  
32  
33  
34  
35  
36  
37  
38  
39  
40  
41  
42  
43  
44  
45  
46  
47  
48  
49  
50  
51  
52  
53  
54  
55  
56  
57  
58  
59  
60  
61  
62  
63  
64  
65

10. Wang Y, Wang J, Zou Y, et al. Female sex is associated with worse prognosis in patients with hypertrophic cardiomyopathy in China. *PLoS One* 2014; 9: e102969.
11. Norrish G, Cantarutti N, Pissaridou E, et al. Risk factors for sudden cardiac death in childhood hypertrophic cardiomyopathy: A systematic review and meta-analysis. *Eur J Prev Cardiol* 2017; 24: 1220–1230.
12. Nijenkamp LLAM, Güçlü A, Appelman Y, et al. Sex-dependent pathophysiological mechanisms in hypertrophic cardiomyopathy: Implications for rhythm disorders. *Heart Rhythm* 2015; 12: 433–439.
13. Peteiro J, Bouzas-Mosquera A, Fernandez X, et al. Prognostic value of exercise echocardiography in patients with hypertrophic cardiomyopathy. *J Am Soc Echocardiogr* 2012; 25: 182–189.
14. Desai MY, Bhonsale A, Patel P, et al. Exercise echocardiography in asymptomatic HCM: exercise capacity, and not LV outflow tract gradient predicts long-term outcomes. *JACC Cardiovasc Imaging* 2014; 7: 26–36.
15. Masri A, Pierson LM, Smedira NG, et al. Predictors of long-term outcomes in patients with hypertrophic cardiomyopathy undergoing cardiopulmonary stress testing and echocardiography. *Am Hear J* 2015; 169: 684-692.e1.
16. Finocchiaro G, Haddad F, Knowles JW, et al. Cardiopulmonary responses and prognosis in hypertrophic cardiomyopathy: a potential role for comprehensive noninvasive hemodynamic assessment. *JACC Hear Fail* 2015; 3: 408–418.
17. Marra AM, Benjamin N, Eichstaedt C, et al. Gender-related differences in pulmonary arterial hypertension targeted drugs administration. *Pharmacol Res* 2016; 114: 103–109.
18. Cirino AL, Harris S, Lakdawala NK, et al. Role of genetic testing in inherited cardiovascular disease: A review. *JAMA Cardiol* 2017; 2: 1153–1160.
19. Naraen A, McKay V, Shaw M, et al. Clinical predictors of informative genetic testing in hypertrophic

cardiomyopathy. *Eur J Prev Cardiol*. Epub ahead of print 22 October 2018. DOI:

10.1177/2047487318808044.

20. Maron MS, Olivotto I, Zenovich AG, et al. Hypertrophic cardiomyopathy is predominantly a disease of left ventricular outflow tract obstruction. *Circulation* 2006; 114: 2232–2239.
21. Zoghbi WA, Enriquez-Sarano M, Foster E, et al. Recommendations for evaluation of the severity of native valvular regurgitation with two-dimensional and Doppler echocardiography. *J Am Soc Echocardiogr* 2003; 16: 777–802.
22. Nagueh SF, Appleton CP, Gillebert TC, et al. Recommendations for the evaluation of left ventricular diastolic function by echocardiography. *Eur J Echocardiogr* 2009; 10: 165–193.
23. Kitaoka H, Kubo T, Okawa M, et al. Utility of tissue Doppler imaging to predict exercise capacity in hypertrophic cardiomyopathy: Comparison with B-type natriuretic peptide. *J Cardiol* 2009; 53: 361–367.
24. Le V Van, Perez M V., Wheeler MT, et al. Mechanisms of exercise intolerance in patients with hypertrophic cardiomyopathy. *Am Heart J* 2009; 158: e27-34.
25. Matsumura Y, Elliott PM, Virdee MS, et al. Left ventricular diastolic function assessed using Doppler tissue imaging in patients with hypertrophic cardiomyopathy: Relation to symptoms and exercise capacity. *Heart* 2002; 87: 247–251.
26. Nistri S, Olivotto I, Maron MS, et al. beta Blockers for prevention of exercise-induced left ventricular outflow tract obstruction in patients with hypertrophic cardiomyopathy. *Am J Cardiol* 2012; 110: 715–719.
27. Fletcher GF, Balady GJ, Amsterdam EA, et al. Exercise standards for testing and training: a statement for healthcare professionals from the American Heart Association. *Circulation* 2001; 104: 1694–1740.

1  
2  
3  
4  
5  
6  
7  
8  
9  
10  
11  
12  
13  
14  
15  
16  
17  
18  
19  
20  
21  
22  
23  
24  
25  
26  
27  
28  
29  
30  
31  
32  
33  
34  
35  
36  
37  
38  
39  
40  
41  
42  
43  
44  
45  
46  
47  
48  
49  
50  
51  
52  
53  
54  
55  
56  
57  
58  
59  
60  
61  
62  
63  
64  
65

28. Malhotra A, Buttrick P, Scheuer J. Effects of sex hormones on development of physiological and pathological cardiac hypertrophy in male and female rats. *Am J Physiol* 1990; 259: H866-71.

29. Cabral AM, Vasquez EC, Moyses MR, et al. Sex hormone modulation of ventricular hypertrophy in sinoaortic denervated rats. *Hypertension* 1988; 11: I93-7.

30. Saberi S, Wheeler M, Bragg-Gresham J, et al. Effect of Moderate-Intensity Exercise Training on Peak Oxygen Consumption in Patients With Hypertrophic Cardiomyopathy: A Randomized Clinical Trial. *Jama* 2017; 317: 1349–1357.

31. Ommen SR, Maron BJ, Olivotto I, et al. Long-term effects of surgical septal myectomy on survival in patients with obstructive hypertrophic cardiomyopathy. *J Am Coll Cardiol* 2005; 46: 470–476.

32. Ammirati E, Contri R, Coppini R, et al. Pharmacological treatment of hypertrophic cardiomyopathy: current practice and novel perspectives. *Eur J Hear Fail* 2016; 18: 1106–1118.

33. Ho CY, Lakdawala NK, Cirino AL, et al. Diltiazem treatment for pre-Clinical hypertrophic cardiomyopathy sarcomereMutation carriers: A pilot randomized trial to modify disease expression. *JACC Hear Fail* 2015; 3: 180–188.

34. Haland TF, Hasselberg NE, Almaas VM, et al. The systolic paradox in hypertrophic cardiomyopathy. *Open Hear* 2017; 4: e000571.

35. Dimitrow PP, Czarnecka D, Kawecka-Jaszcz K, et al. The influence of age on gender-specific differences in the left ventricular cavity size and contractility in patients with hypertrophic cardiomyopathy. *Int J Cardiol* 2003; 88: 11–17.

36. Axelsson A, Iversen K, Vejlstrup N, et al. Left ventricular volume predicts exercise capacity in hypertrophic cardiomyopathy. *Int J Cardiol* 2016; 203: 676–678.

37. Re F, Zachara E, Avella A, et al. Dissecting functional impairment in hypertrophic cardiomyopathy by dynamic assessment of diastolic reserve and outflow obstruction: A combined cardiopulmonary-

echocardiographic study. *Int J Cardiol* 2017; 227: 743–750.

38. Feneon D, Schnell F, Galli E, et al. Impact of exercise-induced mitral regurgitation on hypertrophic cardiomyopathy outcomes. *Eur Heart J Cardiovasc Imaging* 2016; 17: 1110–1117.
39. Azevedo MR, Araujo CL, Reichert FF, et al. Gender differences in leisure-time physical activity. *Int J Public Heal* 2007; 52: 8–15.
40. Mosca L, Hammond G, Mochari-Greenberger H, et al. Fifteen-year trends in awareness of heart disease in women: results of a 2012 American Heart Association national survey. *Circulation* 2013; 127: 1254–63, e1-29.
41. Nistri S, Thiene G, Basso C, et al. Screening for hypertrophic cardiomyopathy in a young male military population. *Am J Cardiol* 2003; 91: 1021–3, a8.
42. Galie N, Humbert M, Vachiery J-L, et al. 2015 ESC/ERS Guidelines for the diagnosis and treatment of pulmonary hypertension: The Joint Task Force for the Diagnosis and Treatment of Pulmonary Hypertension of the European Society of Cardiology (ESC) and the European Respiratory Society (ERS): Endor. *Eur Heart J* 2016; 37: 67–119.
43. Kristensen SD, Knuuti J, Saraste A, et al. 2014 ESC/ESA Guidelines on non-cardiac surgery: Cardiovascular assessment and management: The Joint Task Force on non-cardiac surgery: Cardiovascular assessment and management of the European Society of Cardiology (ESC) and the European Society of Anaesth. *Eur Heart J* 2014; 35: 2383–2431.
44. Picano E, Ciampi Q, Citro R, et al. Stress echo 2020: The international stress echo study in ischemic and non-ischemic heart disease. *Cardiovasc Ultrasound* 2017; 15: 3.

## FIGURE TITLES AND LEGENDS

1  
2  
3  
4  
5  
6  
7  
8  
9  
10  
11  
12  
13  
14  
15  
16  
17  
18  
19  
20  
21  
22  
23  
24  
25  
26  
27  
28  
29  
30  
31  
32  
33  
34  
35  
36  
37  
38  
39  
40  
41  
42  
43  
44  
45  
46  
47  
48  
49  
50  
51  
52  
53  
54  
55  
56  
57  
58  
59  
60  
61  
62  
63  
64  
65

**FIGURE 1. Sex-Related Differences in Functional Capacity.** Panel A: Comparison of exercise performance between males and females according to age. Panel B: Sex distribution among different functional classes.

**FIGURE 2. Outcomes According to Sex.** Event-free survival according to sex for the primary (A, combination of cardiac death, heart failure requiring hospitalization, sustained ventricular tachycardia, appropriate implantable cardioverter defibrillator (ICD) discharge or resuscitated sudden cardiac death and cardioembolic stroke) and secondary endpoint (B, the primary endpoint, plus new onset atrial fibrillation or symptomatic progression to New York Heart Association (NYHA) functional classes III/IV).

**SUPPLEMENTARY FIGURE A. Study flowchart.** CAD: Coronary artery disease.

**SUPPLEMENTARY FIGURE B. Outcome in Male Patients based on METs at Peak Exercise.** Kaplan Meier curves depicting survival free from primary endpoint (combination of cardiac death, heart failure requiring hospitalization, sustained ventricular tachycardia, appropriate implantable cardioverter defibrillator (ICD) discharge or resuscitated sudden cardiac death and cardioembolic stroke) according to functional capacity. No difference was observed in females.

TABLE 1. Baseline Characteristics of the Study Population by sex

	Total Cohort (n = 292)	Males (n = 211)	Females (n = 81)	P Value
<b>Demographic</b>				
Age, years	46 ± 16	44 ± 17	51 ± 16	0.001
BMI, Kg/m <sup>2</sup>	25 ± 3	25 ± 3	25 ± 3	0.16
Family history of SCD	56 (19%)	37 (17%)	19 (23%)	0.25
Family history of HCM	115 (39%)	77 (36%)	38 (47%)	0.11
<b>Medical History</b>				
Syncope	42 (14%)	31 (15%)	11 (14%)	0.9
NSVT	30 (10%)	22 (10%)	8 (10%)	0.9
Atrial Fibrillation	31 (11%)	23 (11%)	8 (10%)	0.8
Angina	69 (24%)	43 (20%)	26 (32%)	0.045
Diabetes	22 (7%)	14 (7%)	8 (10%)	0.33
Hypertension	66 (23%)	46 (22%)	20 (25%)	0.64
LVOT gradient at rest > 30 mmHg	42 (14%)	36 (17%)	6 (7%)	0.04
ASA or myectomy	8 (3%)	3 (1%)	5 (6%)	0.04
Aborted Cardiac Arrest/ SVT	7 (2%)	4 (2%)	3 (4%)	0.4
ICD	8 (3%)	7 (3%)	1 (1%)	0.45
<b>NYHA class</b>				
NYHA I	186 (64%)	147 (70%)	39 (48%)	0.001
NYHA II	84 (29%)	51 (24%)	33 (41%)	0.006
NYHA III	22 (7%)	13 (6%)	9 (11%)	0.21
<b>Pharmacological Treatment</b>				
Beta – Blockers	137 (47%)	98 (46%)	39 (48%)	0.8
Verapamil / Diltiazem	20 (7%)	11 (5%)	9 (11%)	0.12
Disopyramide	19 (6%)	12 (6%)	7 (9%)	0.43
Amiodarone	21 (7%)	14 (7%)	7 (9%)	0.6
RAAS inhibitors	26 (9%)	19 (9%)	7 (9%)	1
Diuretics	22 (7%)	15 (7%)	7 (9%)	0.63
<b>Genetic testing</b>				
With Pathogenic/likely pathogenic sarcomere gene mutations*	137/224 (61%)	96/160 (60%)	41/64 (64%)	0.65
<b>Resting Echocardiography</b>				
LA diameter, mm	42 ± 7	43 ± 7	40 ± 6	0.001
LA volume, ml	80 ± 29	83 ± 31	71 ± 24	0.002
LA volume indexed, ml/mq	42 ± 15	43 ± 16	41 ± 14	0.44
LVEDD, mm	45 ± 5	46 ± 5	43 ± 5	< 0.001
LVEDV, ml	101 ± 27	108 ± 26	84 ± 20	< 0.001
LVEDV indexed, ml/mq	54 ± 12	56 ± 12	48 ± 10	< 0.001
LVESV, ml	34 ± 13	36 ± 14	27 ± 9	< 0.001
LVESV indexed, ml/mq	18 ± 7	19 ± 7	15 ± 5	< 0.001
LVEF, %	67 ± 7	67 ± 7	67 ± 6	0.95
Maximal LV thickness, mm	21 ± 5	21 ± 5	20 ± 4	0.31
Mitral Regurgitation				0.95
None	140 (48%)	101 (48%)	39 (48%)	
Mild	131 (45%)	94 (44%)	37 (46%)	
Moderate	18 (6%)	14 (7%)	4 (5%)	
Severe	3 (1%)	2 (1%)	1 (1%)	
E, cm/s	71 ± 20	70 ± 19	73 ± 23	0.18
A, cm/s	62 ± 22	60 ± 22	66 ± 22	0.04
DTE, msec	230 ± 75	230 ± 74	228 ± 78	0.9
E/A	1.3 ± 0.6	1.3 ± 0.6	1.2 ± 0.6	0.35
E' septal, cm/s	6.8 ± 2.8	7.1 ± 2.8	6.1 ± 2.8	0.04
E' lateral, cm/s	10.1 ± 3.8	10.5 ± 3.9	8.9 ± 3.1	0.004
E/E' septal	11.9 ± 5.2	11.3 ± 4.6	13.7 ± 6.4	0.004
E/E' lateral	8.1 ± 3.8	7.6 ± 3.4	9.4 ± 4.5	0.002
LVOT gradient at rest, mmHg	17 ± 19	18 ± 20	14 ± 15	0.13
Heart rate, beats/min	68 ± 13	68 ± 13	68 ± 14	0.72
SBP, mmHg	121 ± 15	121 ± 15	122 ± 17	0.58

Value are mean ± SD or n (%). \*On 224 genotyped patients.

A = peak velocity of diastolic filling during atrial contraction; ASA = alcohol septal ablation; BMI = body mass index; DTE = deceleration time of the E wave; E = peak velocity of early diastolic filling; E' = early diastolic mitral annular velocity; E/E' = early diastolic velocity ratio; HCM = hypertrophic cardiomyopathy; ICD = implantable cardioverter defibrillator; LA = left atrial; LV = left ventricular; LVEDD = left ventricular end-diastolic diameter; LVEDV = left ventricular end-diastolic volume; LVEF = left ventricular ejection fraction; LVESV = left ventricular end-systolic volume; LVOT = left ventricular outflow tract; NSVT =

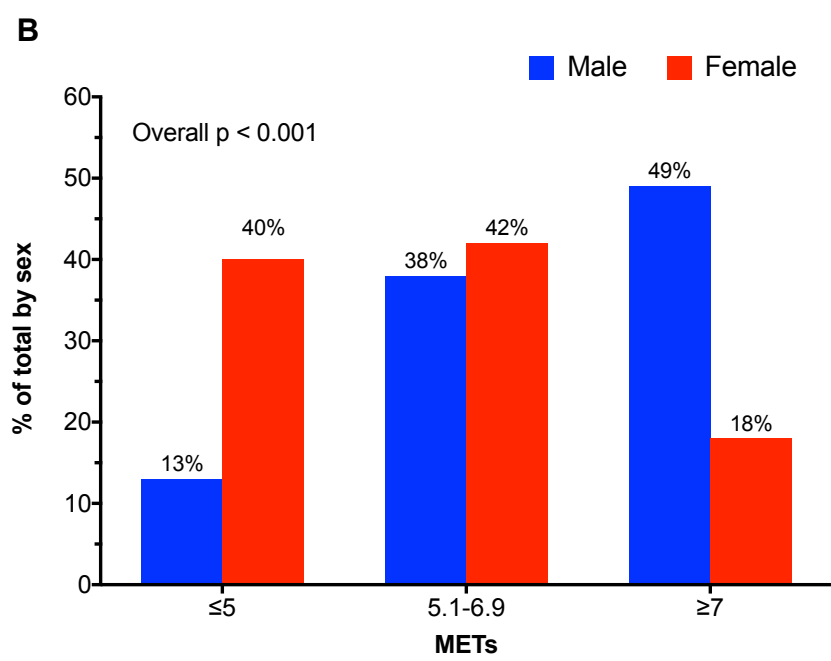
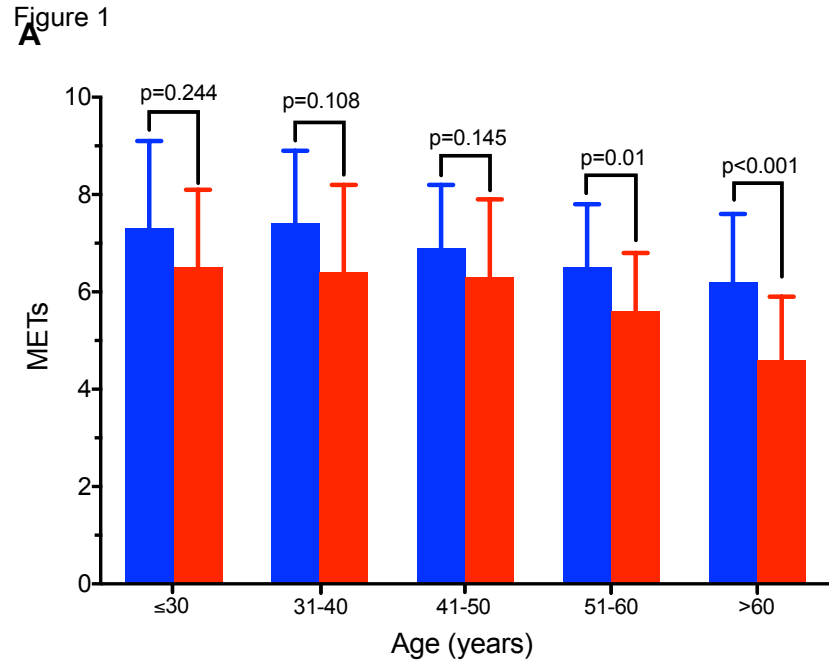
non-sustained ventricular tachycardia; NYHA = New York Heart Association; RAAS = renin angiotensin aldosterone system; SBP = systolic blood pressure; SCD = sudden cardiac death; SVT = sustained ventricular tachycardia.

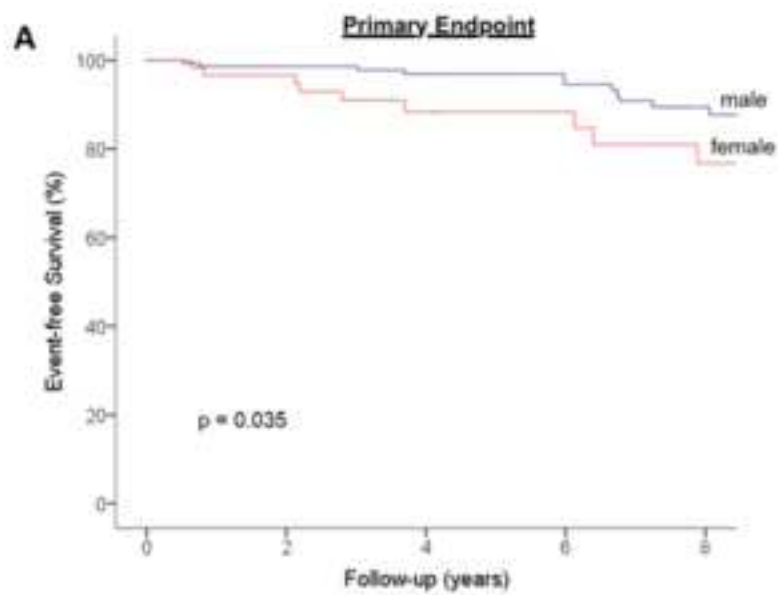
<b>TABLE 2. Exercise Echocardiography by sex</b>				
	<b>Total Cohort (n = 292)</b>	<b>Males (n = 211)</b>	<b>Females (n = 81)</b>	<b>P Value</b>
<b><i>Echocardiographic Parameters</i></b>				
Peak Stress Mitral Regurgitation				0.13
None	108 (37%)	70 (33%)	38 (47%)	
Mild	121 (41%)	90 (43%)	31 (38%)	
Moderate	46 (16%)	39 (18%)	7 (9%)	
Severe	13 (4%)	10 (5%)	3 (4%)	
LVOT gradient at peak stress, mmHg	40 ± 34	45 ± 37	26 ± 18	< 0.001
With LVOT gradient at peak stress > 50 mmHg	82 (28%)	74 (35%)	8 (10%)	< 0.001
LVOT gradient post-stress, mmHg	47 ± 43	54 ± 47	32 ± 26	< 0.001
With LVOT gradient post-stress > 50 mmHg	88 (30%)	74 (35%)	14 (17%)	0.001
<b><i>Hemodynamic Parameters</i></b>				
Peak SBP, mmHg	166 ± 29	168 ± 29	160 ± 27	0.04
Abnormal BP response	38 (13%)	23 (11%)	15 (18%)	0.12
Peak heart rate, beats/min	134 ± 25	135 ± 25	129 ± 25	0.08
Percent of maximum predicted HR	77 ± 12%	77 ± 12%	77 ± 13%	0.82
<b><i>Exercise Parameters</i></b>				
Exercise time, min	11 ± 4	12 ± 4	8 ± 3	< 0.001
Peak WATTS	119 ± 37	131 ± 32	87 ± 30	< 0.001
Peak METs	6.5 ± 1.6	6.9 ± 1.5	5.6 ± 1.6	< 0.001
Peak METs ≤ 5	60 (21%)	28 (13%)	32 (40%)	< 0.001
<b><i>Symptoms /Arrhythmias</i></b>				
Dyspnea	21 (7%)	12 (6%)	9 (11%)	0.38
Angina	3 (1%)	2 (1%)	1 (1%)	
NSVT	3 (1%)	3 (1%)	0 (0%)	
Value are mean ± SD or n (%)				
BP = blood pressure; HR = heart rate; METs = metabolic equivalent; other abbreviations as in Table 1.				

<b>TABLE 3. Predictors of Poor Functional Capacity (<math>\leq 5</math> METs at Peak Exercise) at Univariable and Multivariable Logistic Regression Analysis</b>				
<b>Variables</b>	<b>Univariable Analysis</b>		<b>Multivariable Analysis</b>	
	<b>OR (95% CI)</b>	<b>p Value</b>	<b>OR (95% CI)</b>	<b>p Value</b>
Age (per year increase)	1.04 (1.02-1.06)	<0.001	-	-
Female sex	4.27 (2.35-7.76)	<0.001	4.67 (1.83-11.90)	0.001
BMI (per unit increase)	1.20 (1.10-1.31)	<0.001	1.22 (1.08-1.37)	0.002
Beta-blockers, Verapamil or Diltiazem	1.50 (0.84-2.67)	0.17	-	-
NYHA class (per unit increase)	3.41 (2.20-5.31)	<0.001	2.68 (1.48-4.86)	0.001
LVOT gradient at rest >30 mmHg	2.88 (1.43-5.82)	0.003	3.61 (1.31-9.96)	0.013
LV Ejection Fraction (per unit increase)	0.97 (0.93-1.01)	0.15	-	-
Maximum LV Wall Thickness (per unit increase)	1.03 (0.97-1.09)	0.36	-	-
LA volume (per unit increase)	1.01 (1.00-1.02)	0.17	-	-
LVEDV (per unit increase)	0.99 (0.98-1.00)	0.085	-	-
LVEDV < 1 <sup>st</sup> tertile (<88 ml)	2.40 (1.34-4.30)	0.003	2.99 (1.20-7.46)	0.019
E/E' lateral (per unit increase)	1.17 (1.08-1.27)	<0.001	-	-
Moderate or severe MR at rest	1.61 (0.60-4.34)	0.35	-	-
Presence of pathogenic/likely pathogenic sarcomere gene mutations	0.94 (0.48-1.83)	0.86	-	-

CI = confidence interval; MR = mitral regurgitation; OR = odds ratio; other abbreviations as in Table 1 and 2. NS = not significant.

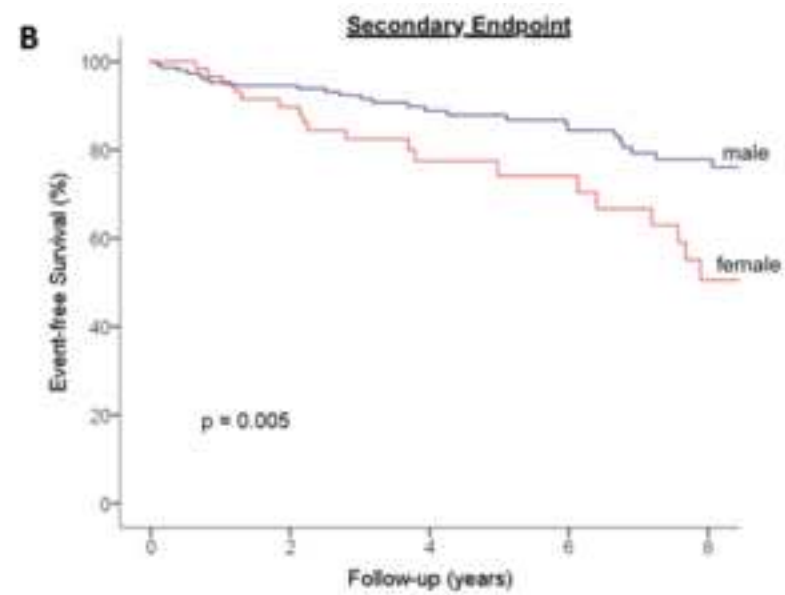
Figure 1





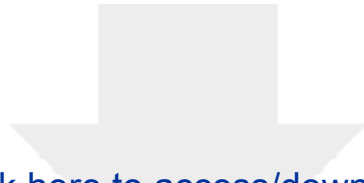
Number of Patients at Risk

Male	177	100	52
Female	65	33	18



Number of Patients at Risk

Male	177	92	43
Female	65	30	11

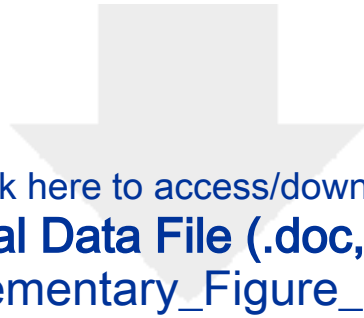


[Click here to access/download](#)

**Supplemental Data File (.doc, .tif, pdf, etc.)**

Supplementary Figure 1 R1 Flow.pptx

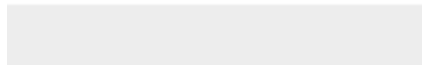


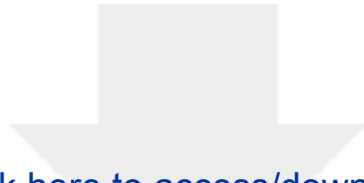


[Click here to access/download](#)

**Supplemental Data File (.doc, .tif, pdf, etc.)**

Supplementary\_Figure\_B R1.tif





[Click here to access/download](#)

**Supplemental Data File (.doc, .tif, pdf, etc.)**

Supplementary\_Table\_A.1 R1.docx

