



UNIVERSITÀ
DEGLI STUDI
FIRENZE

FLORE

Repository istituzionale dell'Università degli Studi di Firenze

Pharmacological treatment of hypertrophic cardiomyopathy: current practice and novel perspectives

Questa è la Versione finale referata (Post print/Accepted manuscript) della seguente pubblicazione:

Original Citation:

Pharmacological treatment of hypertrophic cardiomyopathy: current practice and novel perspectives / Ammirati E.; Contri R.; Coppini R.; Cecchi F.; Frigerio M.; Olivetto I.. - In: EUROPEAN JOURNAL OF HEART FAILURE. - ISSN 1388-9842. - STAMPA. - 18:(2016), pp. 1106-1118. [10.1002/ejhf.541]

Availability:

The webpage <https://hdl.handle.net/2158/1180487> of the repository was last updated on 2019-12-18T17:34:40Z

Published version:

DOI: 10.1002/ejhf.541

Terms of use:

Open Access

La pubblicazione è resa disponibile sotto le norme e i termini della licenza di deposito, secondo quanto stabilito dalla Policy per l'accesso aperto dell'Università degli Studi di Firenze (<https://www.sba.unifi.it/upload/policy-oa-2016-1.pdf>)

Publisher copyright claim:

La data sopra indicata si riferisce all'ultimo aggiornamento della scheda del Repository FloRe - The above-mentioned date refers to the last update of the record in the Institutional Repository FloRe

(Article begins on next page)

Pharmacological treatment of hypertrophic cardiomyopathy: current practice and novel perspectives

Enrico Ammirati^{1*}, Rachele Contri², Raffaele Coppini³, Franco Cecchi³,
Maria Frigerio¹, and Iacopo Olivetto^{3*}

¹De Gasperis Cardio Centre, ASST Grande Ospedale Metropolitano Niguarda, Milan, Italy; ²Cardiothoracic and Vascular Department, Vita-Salute San Raffaele University, Milan, Italy; and ³Referral Centre for Cardiomyopathies, Careggi University Hospital, Florence, Italy

Received 31 October 2015; revised 7 February 2016; accepted 10 March 2016

Hypertrophic cardiomyopathy (HCM) is entering a phase of intense translational research that holds promise of major advances in disease-specific pharmacological therapy. For over 50 years, however, HCM has largely remained an orphan disease, and patients are still treated with old drugs developed for other conditions. While judicious use of the available armamentarium may control the clinical manifestations of HCM in most patients, specific experience is required in challenging situations, including deciding when not to treat. The present review revisits the time-honoured therapies available for HCM, in a practical perspective reflecting real-world scenarios. Specific agents are presented with doses, titration strategies, pros and cons. Peculiar HCM dilemmas such as treatment of dynamic outflow obstruction, heart failure caused by end-stage progression and prevention of atrial fibrillation and ventricular arrhythmias are assessed. In the near future, the field of HCM drug therapy will rapidly expand, based on ongoing efforts. Approaches such as myocardial metabolic modulation, late sodium current inhibition and allosteric myosin inhibition have moved from pre-clinical to clinical research, and reflect a surge of scientific as well as economic interest by academia and industry alike. These exciting developments, and their implications for future research, are discussed.

Keywords

Hypertrophic cardiomyopathy • Left ventricular outflow tract obstruction • Cardiac sudden death • Pharmacological treatment • Beta-blockers • Amiodarone • Ranolazine

Introduction

Hypertrophic cardiomyopathy (HCM) is the most common genetic heart disease, characterized by complex pathophysiology, heterogeneous morphology, and variable clinical manifestations over time.^{1–4} Initially perceived as a rare and malignant disease, the spectrum of HCM has subsequently expanded, as new concepts have emerged regarding its true prevalence and clinical profile.^{3,5} The disease is known to range from the severe manifestations of early descriptions, to the absence of clinical and morphologic expression, including lack of left ventricular (LV) hypertrophy, in genotype-positive individuals.^{6,7} To date, none of the available pharmacological agents have been shown to modify disease development or outcome in HCM patients,^{8,9} with the possible exception of diltiazem in preventing LV remodelling.¹⁰ The only interventions believed to have an impact on long-term prognosis

are surgical myectomy and the implantable cardiac defibrillator (ICD).⁸ Nevertheless, pharmacological therapy plays a very important role in restoring quality of life and reducing the risk of disease-related complications. The main goals of pharmacological therapy in HCM include control of symptoms and exercise limitation, abolition or reduction of dynamic intraventricular gradients, treatment of LV dysfunction and heart failure (HF), control of atrial fibrillation (AF) and ventricular arrhythmias, and prevention of cardioembolism.

After more than 50 years from the first reported case of HCM, only about 2000 patients have been randomized in clinical trials evaluating the efficacy of drug treatments for HCM.⁸ Therefore, international guidelines are largely based on the opinion of experts^{11,12} and the scientific community is still waiting for robust evidence and disease-specific treatment options. In this paper, we will review the indications of individual agents in the management

*Corresponding authors: Tel: +39 0264447791; Fax: +39 0226436019; E-mail: Enrico.ammirati@ospedaleniguarda.it/E-mail: iacopo.olivetto@gmail.com

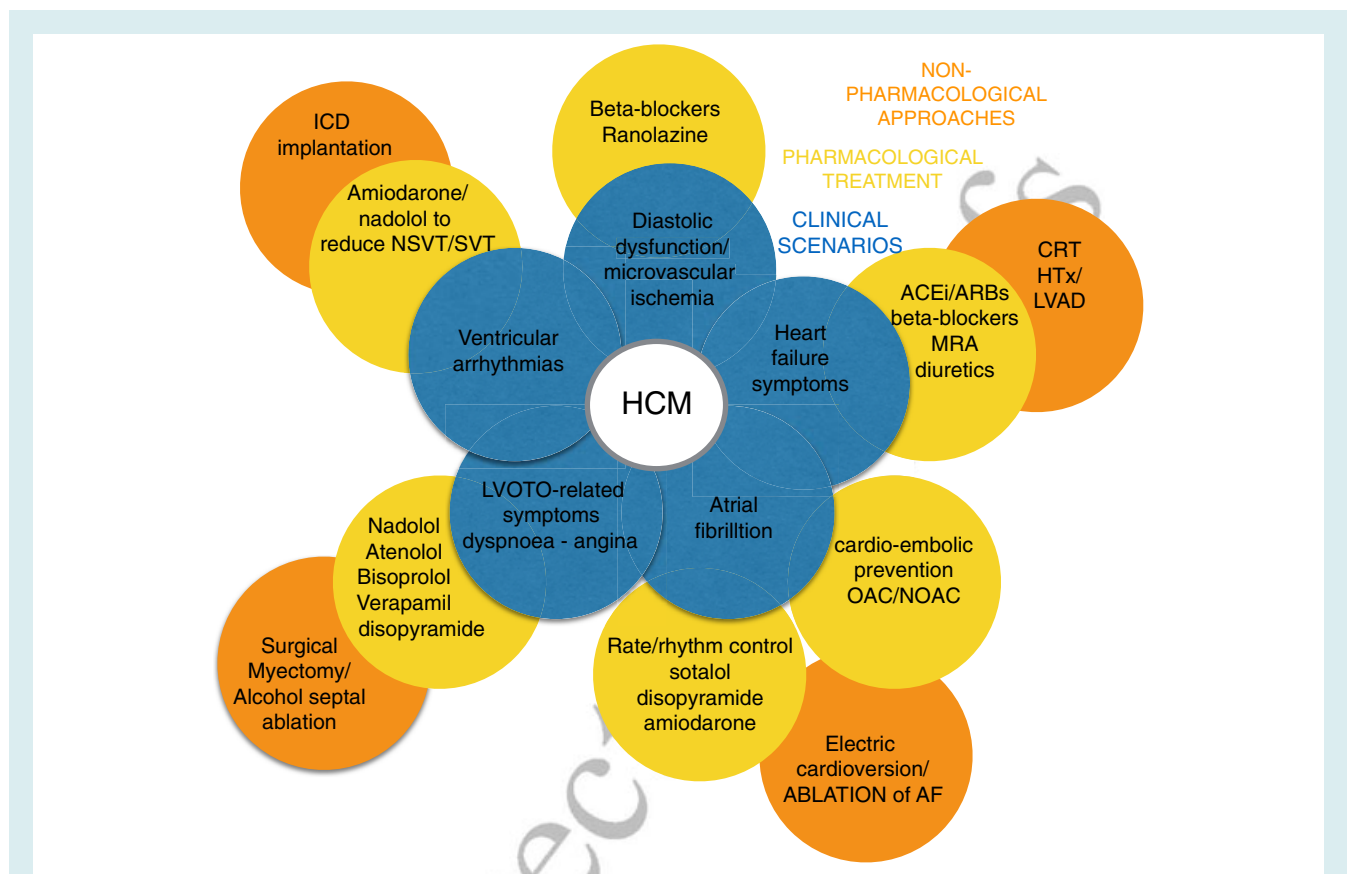


Figure 1 Clinical scenarios and symptoms associated with hypertrophic cardiomyopathy (HCM) and representation of current pharmacological (yellow balloons) and non-pharmacological treatments (orange balloons). ACEi, angiotensin-converting enzyme inhibitors; AF, atrial fibrillation; ARBs, angiotensin receptor blockers; CRT, cardiac resynchronization therapy; HTx, heart transplantation; ICD, implantable cardiac defibrillator; LVAD, left ventricular assist device; LVOTO, left ventricular outflow tract obstruction; MRAs, mineralocorticoid receptor antagonists; NOAC, novel oral anticoagulant; NSVT, non-sustained ventricular tachycardia; OAC, oral anticoagulant; SVT, sustained ventricular tachycardia.

of HCM in the context of its complex pathophysiology, provide practical therapeutic considerations in the light of the 2014 European Society of Cardiology (ESC) guidelines,¹¹ and address promising new approaches currently under scrutiny.

Clinical profiles and genesis of symptoms

Hypertrophic cardiomyopathy may be associated with a normal life expectancy and a very stable clinical course. About a third of patients develop HF, related to dynamic LV outflow tract obstruction (LVOTO). In addition, 5–15% show progression to either the restrictive or the dilated hypokinetic evolution of HCM, both of which may require evaluation for cardiac transplantation.^{13,14} Patients with HCM can remain asymptomatic for their entire lifetime.^{11–13,15} However, symptoms are common (Figure 1) and often insidious: for example, reduced exercise tolerance may not be subjectively perceived as abnormal when present from a very young age. Furthermore, quality of life may be subtly but

significantly impaired by psychological issues, iatrogenic symptoms, and lifestyle restrictions.¹¹

Dyspnoea is common, and reflects high LV filling pressure, diastolic dysfunction or afterload mismatch with mitral regurgitation secondary to LVOTO.^{11,15} In addition, paroxysmal AF has been associated with impaired cardiac reserve, defined as reduced exercise capacity and maximal oxygen consumption.^{16,17} In patients with LVOTO, symptoms are typically variable over time, exacerbated by dehydration, meals, alcohol, use of vasodilators, and squatting. Less frequently, patients report nocturnal orthopnoea, either the consequence of congestive HF or bradyarrhythmias (AF with slow ventricular response or sinoatrial dysfunction).

Angina affects about 30% of symptomatic adults and is often atypical, occurring at rest and/or postprandially.¹⁸ Angina is typically related to microvascular dysfunction and increased LV wall stress caused by LVOTO, in the absence of epicardial coronary lesions. When typical, angina should prompt specific investigations to exclude myocardial bridging of the left anterior descending artery in children and atherosclerotic coronary artery disease in older patients.

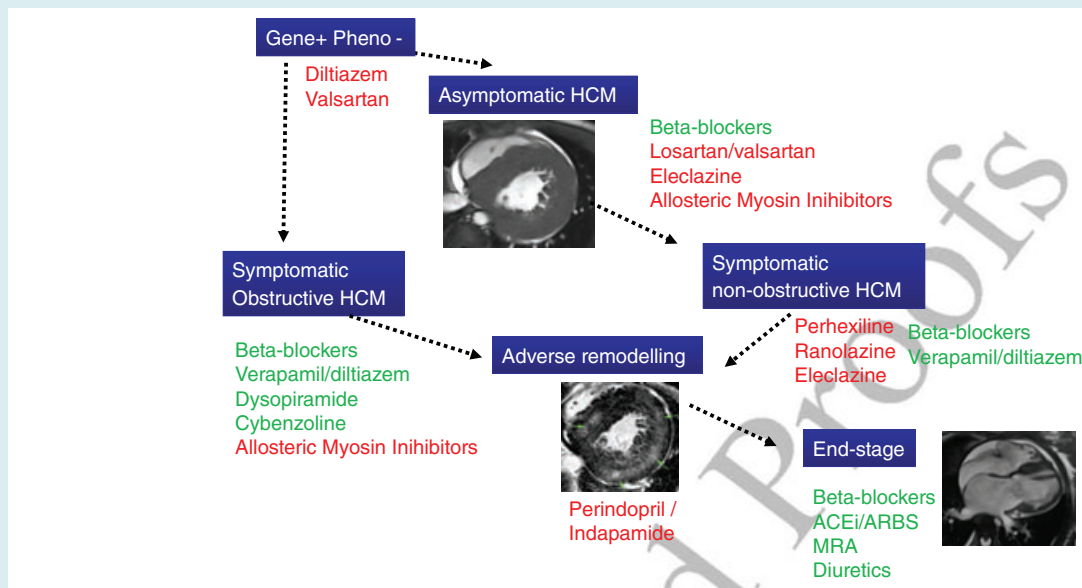


Figure 2 Stages of hypertrophic cardiomyopathy (HCM) and relevant medical treatments. Hatched black arrows reflect potential transitions from one stage to another. Approved medical interventions in specific stage of disease are in green. Drugs under investigation are in red. Pheno, phenotype; HF, heart failure; ACEi, angiotensin converting enzyme inhibitors; ARBs, angiotensin receptor blockers; MRAs, mineralocorticoid receptor antagonists.

Pre-syncope or syncope has been reported in about 15–20%, and is generally attributed to sustained ventricular arrhythmias or severe LVOTO, particular when associated with hypovolaemia or occurring during or after effort.¹⁹ However, neurally mediated syncope is common and should be excluded given its radically different prognostic value.²⁰ Bradyarrhythmias caused by sinoatrial or atrioventricular (AV) block are more common than generally perceived, and may cause syncope even in very young HCM patients.²¹ Finally, in a small minority of patients, sudden cardiac death (SCD) may represent the first manifestation of disease.^{22,23}

Treatment of dynamic left ventricular outflow tract obstruction

Left ventricular outflow tract obstruction is a complex pathophysiological hallmark of HCM, caused by systolic anterior movement of anomalous mitral valve leaflets, contacting the septum at the subaortic level; less frequently, dynamic gradients may occur at the mid-ventricular level. Classically, LVOTO is defined by peak gradients exceeding 30 mmHg at rest or 50 mmHg during exercise, and is associated with unfavourable prognosis because of HF-related complications.²⁴ Moreover, a significant association with SCD has been reported.^{24,25} In the presence of severe, drug-refractory symptoms, LVOTO represents an indication for surgical myectomy or percutaneous alcohol septal ablation²⁶ [Class I, level of evidence (LOE) B in the 2014 ESC guidelines].¹¹ However, pharmacological treatment represents the first approach to all obstructive patients

and, if properly used, may be effective in controlling gradients and symptoms for years (Figure 2).

Beta-blockers are the most popular and effective agents employed.¹¹ The classic studies by Braunwald on propranolol date back to the 1960s, showing impressive gradient and symptoms reduction in the acute setting.^{8,27} Presently, atenolol (50–200 mg/day), nadolol (40–160 mg/day), bisoprolol (5–10 mg/day), and metoprolol (100–200 mg/day) are more frequently used (Tables 1 and 2). High doses may be required, and are usually well tolerated. However, side-effects (mostly fatigue) should be carefully investigated in order to assess optimal individual dose. At our institutions, nadolol is the drug of first choice, in consideration of its good tolerability, favourable electrophysiological profile, and potent effect of gradient and effective 24-h coverage.²⁸ In our experience, titrating classic HCM therapy with beta-blockers for dynamic obstruction is relatively easier compared with patients with HF. Obstructive HCM is by definition hyperdynamic and characterized by strong adrenergic drive. A reasonable approach is to start with a quarter of a full dose of beta-blockers (e.g. nadolol 20 mg once daily, atenolol 25 mg once daily, metoprolol 25 mg twice daily, or bisoprolol 2.5 mg once daily) and increase by the same amount every 1–2 weeks to the maximum tolerated dose (usually 80 mg for nadolol and 100 mg for atenolol, 100 mg twice daily for metoprolol, and 10 mg twice daily for bisoprolol, ~~although it may be up to double that dose; see Table 1~~). Beta-blockers may be titrated based on symptoms, heart rate response, and blood pressure. Non-dihydropyridine calcium channel blockers such as verapamil and diltiazem are considered less effective,¹¹ although they can be used in patients who are intolerant of or have contraindications to beta-blockers.

Table 1 Commonly used drugs for hypertrophic cardiomyopathy (HCM) in adults

| Drug | Indication | Starting dose | Maximum dose | Notes | Side effects |
|--|--|---|--------------------------|--|---|
| Beta-blockers Propranolol | Reduction of angina and dyspnoea in patients with or without LVOTO; control of ventricular response in patients with AF; control of ventricular ectopic beats Same as propranolol | 40 mg twice daily | 80 mg three times a day | Short half life Drug of choice in newborns/infants | Depression Chronotropic incompetence Decrease in AV conduction Asthma |
| Atenolol | | 25 mg o.i.d. | 150 mg | Drug of choice in HCM + hypertension | Hypotension Chronotropic incompetence Asthma |
| Nadolol | Same as propranolol. Reduction in the incidence of NSVT, and SCD prevention, especially when associated with amiodarone | 40 mg o.i.d. | 80 mg three times a day | Effective for control of obstruction When used o.i.d. helps patient compliance | Chronotropic incompetence Decrease in AV conduction Asthma |
| Metoprolol | Same as propranolol | 50 mg o.i.d. | 100 mg three times a day | Short half life | Chronotropic incompetence Asthma |
| Bisoprolol | treatment of systolic dysfunction and heart failure in end-stage patients | 1.25 mg o.i.d. | 15 mg per day | Usually not useful in HOCM Usually not useful in HOCM | Chronotropic incompetence Asthma |
| Calcium blockers Verapamil | HR reduction; control of ventricular rate in patients with AF Possible enhancement of diastolic filling As for verapamil | 40 mg twice daily | 240 mg twice daily | | AV conduction decrease Ankle oedema |
| Diltiazem | | 60 mg twice daily | 180 mg twice daily | Useful in severe microvascular dysfunction | AV conduction decrease Ankle oedema Ankle oedema |
| Felodipine | Refractory angina in HCM | 5 mg o.i.d. | | | |
| Antiarrhythmic agents Disopyramide | Relief of dynamic obstruction, in association with beta-blockers; | 125 mg twice daily | 250 mg three times a day | | QTc prolongation Anticholinergic effects |
| Amiodarone | AF prevention, control of SVT/ NSVT/ ventricular ectopic beats, reduction of appropriate ICD interventions | 200 mg o.i.d. | 200 mg o.i.d. | Incomplete efficacy for SCD prevention despite reduction of NSVT | QTc prolongation Photosensitivity Thyroid dysfunction Pulmonary interstitial disease |
| Sotalol | AF prevention, | 40 mg twice daily | 80 mg three times a day | | |
| Oral anticoagulants Vitamin K inhibitors | Prevention of embolism and ischaemic stroke in patients with paroxysmal or permanent AF | INR target of 2–3 for warfarin and acenocumarole | | Useful after first episode of PAF and/or when LA is enlarged and end stage HF | |
| Direct thrombin and direct activated factor X inhibitors | Prevention of embolism and ischaemic stroke in patients with paroxysmal or permanent AF | Recommended regimen doses based on individual molecule and characteristics of the patient | | Lack of evidence of efficacy guidelines suggest Vitamin K inhibitors as first choice | |

AF, atrioventricular; AV, atrioventricular; HF, heart failure; HR, heart rate; HOCM, hypertrophic obstructive cardiomyopathy; ICD, implantable cardiac defibrillator; INR, international normalized ratio; LA, left atrium; LVOTO, left ventricular outflow tract obstruction; PAF, paroxysmal atrial fibrillation; NSVT, non-sustained ventricular tachycardia; SCD, sudden cardiac death; SVT, sustained ventricular tachycardia.

Table 2 Pharmacological indications to treat symptoms associated with hypertrophic cardiomyopathy (HCM) based on 2014 European Society of Cardiology (ESC) and 2011 American College of Cardiology Foundation (ACCF)/American Heart Association (AHA) guidelines

| Clinical conditions associated with HCM | ESC (2014) | ACCF/AHA (2013) |
|---|------------------------|----------------------------|
| Dynamic left ventricular outflow tract obstruction | | |
| Beta-blockers | I B | I B |
| Verapamil/diltiazem (if beta-blockers contraindicated or not tolerated) | I B IIa C (diltiazem) | I B IIb C (diltiazem) |
| Disopyramide (in association with beta-blockers/verapamil) | I B (IIb C if alone) | IIa B |
| Oral diuretics (congestive symptoms despite the use of beta-blocker and/or verapamil) | IIb C | IIb C |
| Dyspnoea and angina in non-obstructive forms and progressive disease | | |
| Beta-blockers | IIa C | I B |
| Verapamil/diltiazem (if beta-blockers contraindicated or not tolerated) | IIa C | I B (only verapamil) |
| Oral diuretics (dyspnoea despite the use of beta-blocker and/or verapamil) | IIa C | IIa C |
| ACEi or ARBs (LVEF <50%) | IIa C | I B |
| MRA (LVEF <50% and persisting symptoms despite other HF treatments) | IIa C | – |
| Atrial fibrillation | | |
| Ventricular rate control | | |
| Beta-blockers (bisoprolol or carvedilol if LV systolic dysfunction) | I C | I C |
| Verapamil/diltiazem (only with preserved LVEF) | I C | I C |
| Digoxin (only with LVEF < 50%, no LVOTO and symptoms) | IIb C | – |
| Prevention of cardioembolic events | | |
| Oral anticoagulant agents (independent of CHA2DS2-VASc score/also after a single episode) | I B | I C |
| NOAC | I B (as second option) | I C (as second option) |
| Prevention of recurrences | | |
| –Amiodarone | IIa B | IIa B |
| –Sotalol | | IIb C |
| –Disopyramide (in presence of LVOTO in association with beta-blockers or verapamil) | IIb C | IIa B (also without LVOTO) |
| Ventricular arrhythmias | | |
| Reduction of the occurrence of NSTV | | |
| Amiodarone | – | – |
| Sotalol | – | – |
| Reduction of symptomatic VT or recurrent shocks (with ICD) | | |
| Amiodarone | I C | – |
| Beta-blockers | I C | – |

ACEi, angiotensin-converting enzyme inhibitors; ARBs, angiotensin receptor blockers; LV, left ventricle; LVEF, left ventricular ejection fraction; LVOTO, left ventricular outflow tract obstruction; MRA, mineralocorticoid receptor antagonist; NOAC, new oral anticoagulant agents; NSTV, non-sustained ventricular tachycardia.

Disopyramide (an antiarrhythmic class IA agent) can be used in association with beta-blockers to improve symptoms and reduce intraventricular gradients in patients with LVOTO by virtue of its negative inotropic effect.¹¹ Whereas beta-blockers are most effective on provokable LVOTO, disopyramide is the most effective agent on resting obstruction.²⁸ Efficacy and safety of disopyramide has been demonstrated in a large multicentre registry.^{29,30} However, QT prolongation and its anticholinergic properties can limit its use and impair compliance. The latter include xerostomy, accommodation disturbances and, in men, lower urinary tract symptoms/prostatism, which may be treated with low doses of pyridostigmine.³¹ Moreover, disopyramide tends to lose its efficacy over time. Therefore, in our experience, it often represents a pharmacological 'bridge' to invasive septal reduction therapies, rather than a long-term strategy. An electrocardiogram (ECG) should be performed before initiation of the drug, to evaluate the corrected QT (QTc) interval. Sustained-release 250 mg tablets are the usual choice, at a starting dose of 125 mg twice a day. After the first week, QTc is re-evaluated before disopyramide is titrated to the full dose (250 mg twice daily). It is essential to inform patients of

the need to avoid concomitant therapy with other drugs associated with QTc prolongation; conditions that favour dehydration or electrolyte imbalance should also be avoided. In patients who are intolerant to disopyramide, cibenzoline has been employed by Japanese authors, with beneficial effects on dynamic obstruction and LV diastolic function.³² Serial evaluation of the resting outflow gradient is important during the titration of the pharmacological therapy, although drug titration should proceed if tolerated even when systolic anterior movement is abolished, as obstruction is likely to recur on effort. Exercise echocardiography should be performed when the optimal regimen is reached, in order to exclude residual provokable gradients.

In patients with LVOTO and concomitant disease requiring pharmacological treatment, caution is required with vasodilators and/or positive inotropic agents, because of the risk of exacerbation of LVOTO; examples include phosphodiesterase type 5 inhibitors for the treatment of erectile dysfunction, methamphetamine for attention deficit hyperactivity disorder, angiotensin-converting enzyme inhibitors (ACEi), or angiotensin receptor blockers (ARBs) for treatment of concomitant systemic

hypertension. Nevertheless, these drugs often seem well tolerated.^{9,33,34}

In the presence of asymptomatic patients with high resting or provokable gradients, one should always question the true lack of symptoms vs. lifestyle adaptation. These patients often have demonstrable exercise limitation, which is exacerbated by meals. Furthermore, severe gradients may be associated with haemodynamic instability and abnormal blood pressure response on effort. Based on these considerations, a course of pharmacological therapy aimed at controlling outflow obstruction may lead to subjective improvement even in 'asymptomatic' patients, and is likely to provide greater haemodynamic balance during daily activity. If well-tolerated and effective, treatment may be continued based on patients' preferences.

Prophylaxis for endocarditis is advised limited to patients with LVOTO, when invasive medical procedures are required.^{35,36} However, risk is low, and neither the 2014 ESC guidelines nor the 2011 American College of Cardiology Foundation (ACCF)/American Heart Association (AHA) guidelines on HCM specifically recommended prophylaxis.^{11,12} However, these considerations should be weighed against recent data suggesting an association between decreased use of antibiotic prophylaxis in general cardiac patients and an increase incidence of endocarditis, both in high- and low-risk individuals.³⁷

Treatment of non-obstructive patients and progressive disease

In patients with preserved LV ejection fraction (LVEF), symptoms may be associated with diastolic dysfunction or microvascular ischaemia. However, the presence of severe refractory symptoms consistently elicited by exercise should raise suspicion of labile obstruction, and be specifically investigated. Dyspnoea and angina in non-obstructive patients can be usually controlled by beta-blockers,¹¹ employing the same agents used for LVOTO although usually at lower doses. In patients with non-obstructive HCM, titration of beta-blockers follows the aforementioned patterns, although lower doses are generally required in view of a less pronounced adrenergic drive. Symptomatic response and tolerability should drive titration, rather than specific instrumental parameters. Diastolic indices, in particular, appear of little value in this setting. Notably, in the small subset with end-stage disease, whether owing to systolic dysfunction or restrictive evolution, the armamentarium and modalities of classic HF is required. Titration of beta-blockers should be more cautious in these patients because of the fragile haemodynamic equilibrium. Diltiazem or verapamil may be used as an alternative.¹¹ Verapamil has been the most widely applied therapy in HCM and, although a clear benefit in improvement of functional capacity has never been demonstrated, it may be effective in improving quality of life, likely because of its ability to slow heart rate and prolong LV ventricular filling time. The dose ranges from 60 mg twice daily to 240 mg twice daily. Similar effects are observed with diltiazem (dose range 120–360 mg/day) (Tables 1 and 2).

In HCM patients with angina or atypical chest pain, no drug has shown convincing efficacy in improving microvascular function. In clinical practice, symptomatic relief may be obtained by classic anti-ischaemic agents. The most effective are usually represented by AV blocking drugs such as beta-blockers and verapamil. This is consistent with an early observation by Cannon et al.³⁸ showing that high ventricular rates are associated with lactate release in the coronary sinus in HCM patients (i.e. with ischaemia). In our experience, ranolazine can also be very effective in controlling chest pain,³⁹ although individual response may be variable. Finally, long-acting nitrates and dihydropyridines may be employed as second-line agents, but are usually less effective unless there is associated coronary artery disease.⁴⁰

Up to 10–15% of patients with HCM develop signs and symptoms of HF despite preserved systolic function, with worsening diastolic indices subtended by extensive myocardial fibrosis (Figures 2 and 3). Of these, about one-third develop frank LV restriction and/or systolic dysfunction, evolving to refractory HF and the so-called 'end-stage' of HCM.^{13,14} Standard HF therapy should be systematically introduced below LVEF 50%,⁴¹ including ACEi, ARBs, beta-blockers, mineral-corticoid receptor antagonists, and loop diuretics (class IIa, LOE C).¹¹ Considering that HCM is generally characterized by a small LV cavity and supranormal systolic function, even LVEF values in the low-normal range should be regarded with suspicion. Indeed, previous work from our groups based on cardiac magnetic resonance (CMR) has shown that average LVEF in resting conditions exceeds 70% in HCM patients, and that values in the 50–65% range may be already subtended by significant amounts of myocardial fibrosis, suggesting that progression towards end-stage disease may have begun.⁴² Thus, in selected patients within this LVEF range, it is reasonable to consider HF treatment with ACEi, ARBs, mineral-corticoid receptor antagonists, and loop diuretics in the presence of congestive symptoms as evidence of increasing LV filling pressure and/or extensive myocardial fibrosis. Cardiac resynchronization therapy (CRT) has been employed in the setting systolic dysfunction with concomitant left bundle branch block (Class IIb, with LOE C recommendation on CRT), although a survival benefit has not been demonstrated.¹¹ Definitive indications for CRT in end-stage HCM are still lacking and the predictors of response are likely different from those applied in HF, beginning with the higher LVEF threshold requiring consideration in HCM.¹¹

Although cardiac transplant is rarely performed in HCM, patients have an excellent outcome (Class IIa indication for patients with LVEF <50% and class IIb for patients with LVEF ≥50%, both with LOE B).¹¹ When disease progression is evident, referral to transplantation centres should be prompt, as the window of opportunity may be lost because of rapidly ensuing, refractory pulmonary hypertension. The use of LV assist devices has been reported in HCM, but can be challenging because of the small LV dimensions observed in most end-stage patients (Class IIb with LOE C).¹¹

Management of atrial fibrillation

Atrial fibrillation is the most frequent arrhythmia in HCM, affecting more than 20% of patients, and represents a marker of

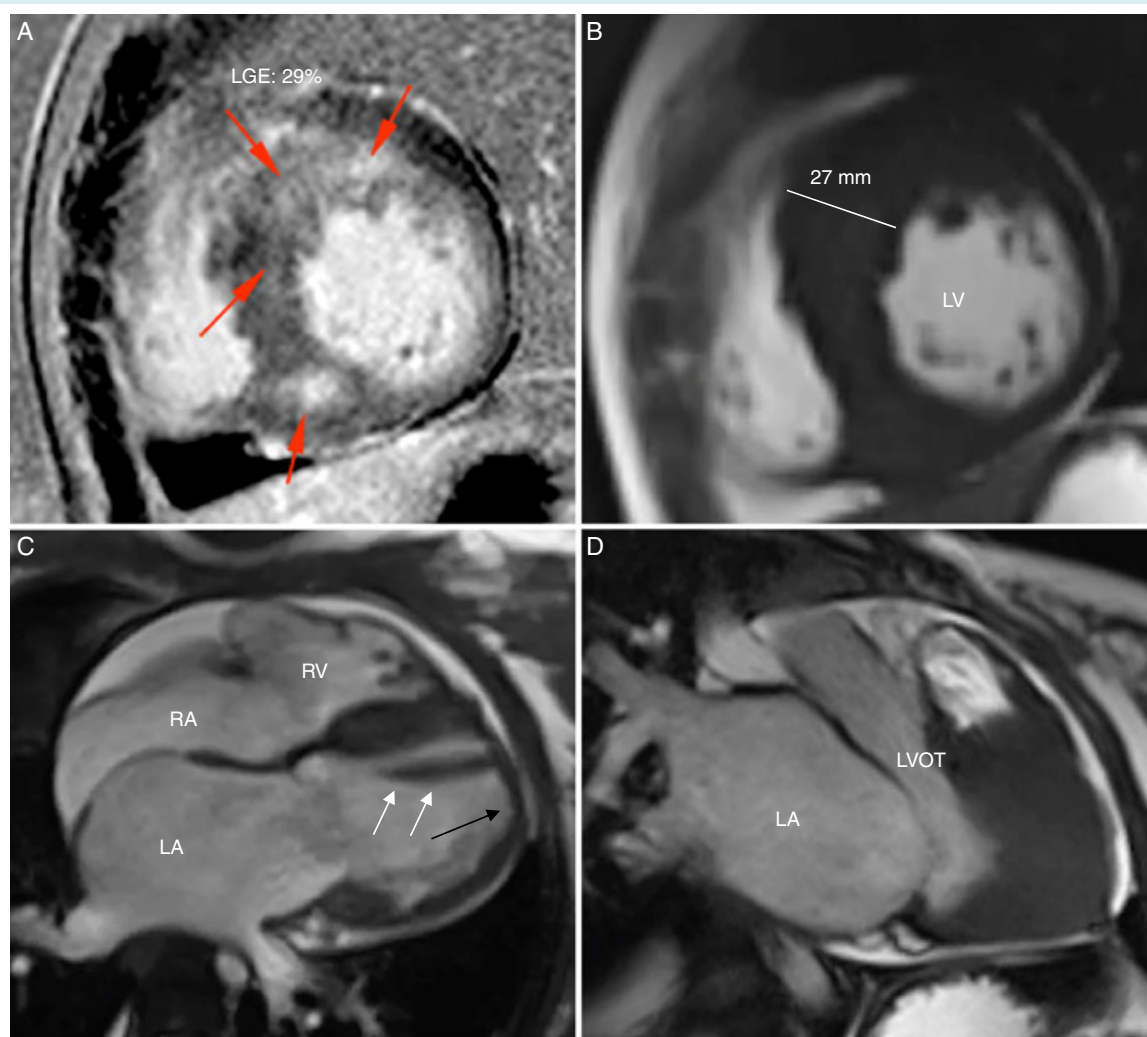


Figure 3 Cardiac magnetic resonance of a 15-year-old Caucasian female patient with non-obstructive hypertrophic cardiomyopathy, presenting with severe heart failure symptoms (New York Heart Association class III) despite preserved left ventricular (LV) ejection fraction (67%). There was evidence of severe pulmonary hypertension, restrictive LV filling pattern and moderate mitral valve insufficiency. She subsequently required heart transplantation (HTx). Ambulatory medical treatment before admission for HTx were atenolol 100 mg once daily, furosemide 25 mg twice daily, acetylsalicylic acid 100 mg and ivabradine 5 mg once daily (off-label use to control sinus tachycardia). (A) Extent of late-gadolinium enhancement (LGE—mainly located at the anterior and posterior insertion of the right ventricle free wall—red arrows) constituting 29% of the LV, compatible with extensive fibrotic replacement. (B) Short axis view showing asymmetric distribution of hypertrophy; LGE is observed at the site of maximum LV thickness. (C) Four-chamber view showing marked dilatation of the left atrium (LA, area 39 cm²) and a dysmorphic LV with apically displaced papillary muscle (white arrows) inserted at the level of an 'amputated' apex (black arrow). (D) No evidence of dynamic obstruction at the LV outflow tract (LVOT). RA, right atrium. (Courtesy of Patrizia Pedrotti; Niguarda Ca' Granda Hospital, Milan, Italy).

unfavourable prognosis, particularly when associated with LVOTO and in patients younger than 50 years of age; moreover, the onset of AF worsens symptoms related to HF.^{43–45} Following onset of paroxysmal AF, long-term antiarrhythmic therapy is general employed to prevent recurrences (Tables 1 and 2). Sotalol and, in patients with LVOTO, disopyramide (associated with beta-blockers), represent reasonable first-line agents while other Class I agents, such as flecainide or propafenone are generally avoided owing to concerns with pro-arrhythmic effects

and haemodynamic deterioration because of conversion to AF with rapid ventricular conduction.¹¹ Significant clinical experience with dronedarone is lacking. When AF relapses in the context of HF or LVOTO with severe left atrial dilatation, amiodarone represents the only option for rhythm control. Furthermore, the 2014 ESC guidelines on HCM recommend the use of amiodarone following DC cardioversion (class IIa, LOE B).¹¹ Owing to concerns with long-term toxicity in young patients, the minimum effective dose should be employed (usually, 200 mg five to seven times per week)

and regular surveillance for thyroid, hepatic, pulmonary, and ophthalmic toxicity should be instituted. Symptomatic AF refractory to optimal pharmacological therapy represents an indication for transcatheter ablation of AF (or surgical maze in obstructive patients undergoing surgery). However, international experience in HCM is limited. Patient selection, as high recurrence rates are expected in older patients with advanced symptoms and marked left atrial dilatation.⁴⁶ Thus, AF ablation should be considered early following onset of AF until the arrhythmic substrate remains amenable. Furthermore, it is important to inform patients that in over 50% a second procedure is necessary for optimal results and that it may not be possible to abandon long-term antiarrhythmic therapy.^{46–48}

When maintenance of sinus rhythm is not deemed feasible and rate control is the only option, beta-blockers (atenolol, nadolol, metoprolol, or bisoprolol in the presence of a preserved LVEF, bisoprolol, or carvedilol in the presence of systolic dysfunction) and verapamil or diltiazem (only with preserved LVEF) are indicated.¹¹ Digoxin should not be used in the setting of classic HCM, but may be considered in the subgroup with advanced LV dysfunction for rate control in the setting of chronic AF. Rarely, an 'ablate and pace' approach is necessary, usually in end-stage patients.

The onset of AF in HCM patients, even after a single episode, constitutes an indication to oral anticoagulation irrespective of other risk factors for embolic stroke such as age or gender. Use of the CHA₂DS₂-VASc score is not recommended.¹¹ In a retrospective analysis of 4821 HCM patients, 35.6% subjects with a CHA₂DS₂-VASc score of 0 had a thromboembolic event during the 10-year follow up.⁴⁹ Furthermore, that analysis demonstrated that advanced age, presence of AF, previous thromboembolic event, advanced NYHA class, increased left atrial diameter, presence of vascular disease, and increased maximal LV wall thickness correlated with risk of thromboembolic events, whereas the use of vitamin K antagonists was associated with a 54.8% relative risk reduction in HCM patients with AF.⁴⁴ Warfarin represents the drug of choice and should be titrated to maintain an international normalized ratio (INR) between 2.0 and 3.0. However, many young and active patients show limited compliance with this regimen or refuse it altogether, while others may have difficulties in maintaining the INR within the therapeutic range or experience complications.⁴⁴ Until recently, the less effective alternative of an antiplatelet agent was offered; however, the introduction of the novel oral anticoagulants (NOACs), including the direct thrombin inhibitor dabigatran and factor Xa inhibitors rivaroxaban, apixaban, and edoxaban, is rapidly changing this landscape. While caution is mandatory in the absence of safety and efficacy data in HCM patients, NOACs appear a promising alternative to warfarin, and deserve specific investigation.¹¹

Control of ventricular arrhythmias

An ICD is considered the only effective strategy for prevention of arrhythmic SCD in patients with HCM. The ICD is universally recommended in secondary prevention, as the risk of arrhythmic relapse after the first episode is as high as 11% per year (Class

I LOE B).^{11,50} Conversely, indications for primary prevention are hotly debated. A new score has recently been developed by the ESC,²⁵ by which a high risk is defined as $\geq 6\%$ at 5 years. The score is currently being validated in independent cohorts, with contrasting results.^{51–53} Conversely, the ACCF/AHA guidelines favour individual, non-parametric evaluation of major risk factors.¹² The issue of the prevention of SCD and arrhythmic risk stratification is beyond the scope of the present review. The issue remains central to HCM management, and has been the focus of several articles in the recent literature.^{15,54} Classic and emerging risk factors, such as late-gadolinium enhancement and complex genotypes,^{55–57} are commonly used to assess risk in individual patients, with approaches that slightly differ in Europe and the USA (see the Supplementary material online, Table S1). Irrespective of any chosen approach, the identification of high-risk patients remains challenging because of the low arrhythmic event rate, limited accuracy of risk factors and stochastic nature of SCD.^{58,59} Even in high-risk HCM patients, the onset of life-threatening arrhythmias is highly unpredictable, as highlighted by the variable long time-lapses between ICD implantation and first appropriate intervention. Notably, neither a circadian trend in the onset of ventricular arrhythmias nor a significant correlation with strenuous exercise has been documented.⁶⁰ The vast majority of patients with an ICD will never experience appropriate shocks, but will be exposed to the long-term complications of the device.⁵⁰ Furthermore, while paediatric cohorts are considered at highest risk, older age is associated with a marked reduction in likelihood of SCD. The risk of SCD is markedly reduced over 65 years of age, and fewer indications for ICD implantation in primary prevention exist in this age group. Nevertheless, the option must be evaluated on an individual basis and considered in patients with multiple risk factors. End-stage progression with systolic dysfunction (arbitrarily but consistently defined in the literature by a LVEF $< 50\%$) is associated with a high risk of SCD (around 10% per year) and therefore considered an indication for ICD implantation in primary prevention.^{14,61} However, consideration for an ICD should be given also to patients with preserved systolic function in the presence of severe diastolic impairment (restrictive evolution) associated with NYHA functional class III symptoms.

Several studies show that empirical pharmacological treatment does not confer optimal protection from SCD (Table 2). Nonetheless, amiodarone, sotalol, and beta-blockers reduce the occurrence of non-sustained ventricular tachycardia (NSVT).^{12,62} Thus, it is likely that a judicious pharmacological approach can be effective in reducing the arrhythmic burden and lower risk in patients with HCM, as well as reducing the incidence of appropriate ICD interventions. In our experience the combination of nadolol with low-dose amiodarone is well tolerated and effective in reducing ventricular arrhythmic burden, as documented by ECG Holter monitoring, potentially contributing to the low incidence of SCD at our institution in the pre-ICD era (0.5% per year).⁶³

When not to treat

Patients with HCM who are asymptomatic and have no evidence of arrhythmias or LVOTO at rest or on effort generally do not

Table 3 drugs that have been employed in different preclinical studies and/or pilot clinical trials as possible disease-modifying therapies in hypertrophic cardiomyopathy (HCM)

| Drug | Diltiazem | Ranolazine/ eleclazine | Losartan/valsartan | Statins | Antioxidants (N-acetyl-cysteine) |
|-----------------------------------|--|---|--|--|--|
| Molecular target | L-Type Ca channel of CMs | Late Na current of CMs | AT1-receptor blockers on CMs and myocardial FBs | HMG-CoA reductase | Precursor of glutathione (oxidant) |
| Proposed Mechanism | Reduced Ca entry into the cytosol of CMs using ↓ [Ca] _i | Reduced [Na] _i and increased Ca exit from CMs via NCX, causing ↓ [Ca] _i | Block of AT1 signalling pathway in CMs (↓hypertrophy) and FBs (↓fibrosis) | ↓ Rho/Ras in FBs (↓fibrosis) and in CMs (↓hypertrophy); ↓ oxy. stress | ↓ stress in FBs (↓fibrosis) and CMs (↓hypertrophy) |
| Preclinical studies in HCM models | Preventive treatment in transgenic mice with R403Q β-MyHC mutation ⁷⁰ | Study on septal samples from HCM patients (myectomy) ⁷⁰ | Losartan in transgenic mice with R92Q-TnT mutation ⁷¹ | Atorvastatin in a rabbit model with R403Q MyHC mutation ⁷² | Rabbits with R403Q MyHC mutation; ⁷⁴ mice with TPM mutation ⁷⁵ |
| Effects in preclinical studies | Prevention of hypertrophy and LV dysfunction ¹⁰ | Reduction of cellular arrhythmogenesis, improved diastolic function ⁷⁰ | Endomyocardial fibrosis is greatly reduced after treatment ⁷¹ | Reduction of hypertrophy and increased LV function ⁷² | Reduction of hypertrophy, fibrosis ⁷⁴ and diastolic dysfunction ⁷⁵ |
| Clinical studies | Slowing of phenotype development in young mutation carriers ¹⁰ | Ongoing studies (RESTYLE-HCM with ranolazine; LIBERTY-HCM with eleclazine) | Losartan in studies, 33 and 9. Reduced LVH in 33, but no effects on LVH in 9 | Pilot study on 32 patients; no effects on hypertrophy/cardiac function ⁷³ | Ongoing Phase 1 study (NCT01537926) |
| Future perspective | Increase the number of carriers, prolong follow-up | Prevention of phenotype development in transgenic mice | VANISH study for prevention of phenotype in HCM mutation carriers | None | Ongoing Phase 1 study (NCT01537926) |

AT1, Angiotensin II receptor type 1; β-MyHC, β-myosin heavy chain; Ca, calcium; CMs, cardiomyocytes; FBs, fibroblasts; HMG-CoA, 3-hydroxy-3-methyl-glutaryl-CoA; LV, left ventricular; LVH, left ventricular hypertrophy; Na, sodium; NCX, sodium–calcium exchanger; TnT, troponin-T; TPM, tropomyosin. Superscript numbers in the table are references.

require medical treatment. However, some patients self-reporting as asymptomatic may subjectively benefit from low doses of beta-blockers (e.g. bisoprolol 2.5 mg once daily), particularly on effort and after meals. Treatment should be offered as a short (2–3 months) trial, after which each subject may decide whether to continue. As a rule, it is good to investigate whether the patient is truly asymptomatic, by performing maximal, symptom-limited exercise testing and assessing biomarkers over time. Labile obstruction should also be excluded. In the case of adolescents and very young adults exercising regularly, heart rate control using beta-blockers may be considered in order to avoid elevated cardiac rates on effort, which are associated with lactate production in HCM hearts, reflecting silent ischaemia.³⁸

Aggressive control of modifiable cardiovascular risk factors is mandatory in HCM patients, in order to prevent the synergistic effects of coronary disease, diabetes and hypertension.⁴⁰ Management of hypertension should follow existing guidelines.⁶⁴ Although the introduction of vasodilators should be cautious and gradual, because of potential worsening of resting or labile LVOTO, recent trials have shown that ARBs are safe and generally tolerated in

HCM patients.^{9,33} Finally, patients with obstructive HCM have a significant prevalence of obstructive sleep apnoea syndrome; this may exacerbate symptoms and arrhythmias and should be specifically sought and managed.⁶⁵ Advice regarding appropriate lifestyle maybe extremely useful in reducing symptoms and risk in HCM patients, and may suffice in milder forms of the disease in which pharmacological therapy is not warranted. There is general consensus that patients should abstain from competitive sports, as well as from strenuous and protracted physical activities, which can represent a trigger for arrhythmias and SCD (Class I, LOE C in the 2014 ESC guidelines).¹¹ Conditions that reduce circulating blood volume should be avoided, to prevent worsening of LVOTO.⁶⁶

Novel perspectives

A surge in pharmacological research on HCM has followed the identification of novel therapeutic targets, and holds promise for a rapid change in clinical management of this disease. Several molecular mechanisms and disease pathways, stemming from the genetic background of HCM, represent appealing therapeutic targets, and

Table 4 Ongoing and completed randomized clinical trial assessing efficacy and safety of medical agents in patients with hypertrophic cardiomyopathy (HCT) since 2010

| First Author or Name of the study | Drug on evaluation | Endpoint of the study | Number of patients | Results | Year of publication |
|--|---|---|---|--|--|
| Abozguia et al. ⁶⁸ | Perhexiline 100 mg vs. placebo | Efficacy on diastolic function and exercise capacity | 46 patients with non-obstructive symptomatic HCM | The metabolic modulator perhexiline improved diastolic function and increased peak oxygen uptake | 2010 |
| Shimada et al. ³¹ | Losartan 50 mg bid vs. placebo | Effects on LVH and fibrosis | 20 patients with non-obstructive HCM | attenuation of progression of LVH and fibrosis with losartan | 2013 |
| INHERIT trial ⁹ | Losartan 100 mg vs. placebo | Effects on LVH and fibrosis | 124 patients with obstructive or non-obstructive HCM | Losartan did not reduce LVH. Treatment with losartan was safe | 2015 |
| Ho et al. ¹⁰ | Diltiazem 360 mg/die vs. placebo | Safety, feasibility and effect of diltiazem as disease-modifying therapy | 38 sarcomere mutation carriers without LVH | Diltiazem improved early LV remodelling | 2015 |
| – | Perhexiline 100 mg (sponsor Heart Metabolics Ltd) vs. placebo | Hierarchical classification of outcome variable and change in maximum oxygen consumption after 6 months | 320 patients with HCM and moderate to severe HF | Phase III | Starting March 2016 (NCT02431221) |
| RESTYLE-HCM [†] | Ranolazine | Change in maximum oxygen consumption at CPET | 80 patients | Phase II/III | Ongoing—completed recruitment |
| LIBERTY-HCM | GS-6615 (sponsor: Gilead Sciences) vs. placebo | Safety/efficacy study on exercise capacity in pts with symptomatic | 180 patients with HCM | Phase II/III evaluation of change in peak oxygen uptake | Ongoing—recruiting patients NCT02291237 |
| VANISH (New England Research Institute, USA) | Valsartan up to 160 mg vs. placebo | Composite endpoint of functional capacity, amount of myocardial fibrosis and other parameters after 2 years | 150 patients HCM with NYHA I–II and mutation carriers without LVH | Phase II | Ongoing—recruiting patients (NCT01912534) |
| University of Texas, Health Science Centre, Houston, USA | N-acetylcysteine 600/1200 mg vs. placebo | Regression of indices of cardiac LVH after 3 years | 75 patients with HCM and preserved systolic function | Phase I | Ongoing—recruiting patients (NCT01537926) |

CPET, cardiopulmonary exercise test; HCM, hypertrophic cardiomyopathy; LV, left ventricular; LVH, left ventricular hypertrophy; NYHA, New York Heart Association.

*With updated data on clinicaltrials.gov (key word: 'hypertrophic cardiomyopathy', selected on 116 studies) and pubmed.org (Key words: 'hypertrophic cardiomyopathy' AND 'clinical trials' from 2010: 143 results). No updated data were available regarding clinical trials testing the efficacy of pirfenidone 400 mg b.i.d. (completed recruitment in 2003, NCT00011076) and atorvastatin 80 mg (completed recruitment in 2010, NCT00317967). RHYME study is a non-randomized study registered in clinicaltrials.gov aimed to test efficacy of ranolazine in reducing angina symptoms after 60 days in 20 patients (NCT01721967).

[†]Study not registered in clinicaltrials.gov

have been reviewed by Ashrafi et al.⁶⁷ Indeed, based on sound translational research, a number of agents have already found their way to clinical testing. Perhexiline, a metabolic modulator that inhibits the metabolism of free fatty acids and enhances carbohydrate utilization by cardiomyocytes, has been employed with the aim of normalizing energy homeostasis in HCM. In a randomized, double-blind placebo-controlled trial, perhexiline has shown the capacity to improve the ratio of myocardial phosphocreatine to adenosine triphosphate in the myocardium, resulting in improved diastolic function and exercise capacity.⁶⁸ A randomized, pivotal Phase 3 trial of 350 patients evaluating perhexiline for the treatment of moderate-to-severe HCM has recently been announced (<http://www.heartmetabolics.com/news/2015/news-041515.html>). However, concerns exist regarding the safety profile of the drug, following reports of hepatotoxicity in predisposed individuals, and the drug requires long-term monitoring of plasma levels.⁶⁹

Recently, human HCM cardiomyocytes have been shown exhibit marked electrophysiological remodelling leading to abnormal intracellular calcium handling, enhanced arrhythmogenesis, abnormal diastolic function, and excessive energy expenditure. These defects are selectively reversed *in vitro* by the late sodium current inhibitor ranolazine.⁷⁰ Thus, targeting this single molecular mechanism has the potential to counter several key components of the HCM pathophysiology, including diastolic dysfunction, microvascular dysfunction, arrhythmogenesis and, by virtue of a mild negative inotropic effects, dynamic outflow obstruction.⁷⁰ These data provided a rationale for the recently completed multicentre, double-blind, placebo-controlled pilot study, testing the efficacy of ranolazine on exercise tolerance in symptomatic HCM patients (RESTYLE-HCM; EUDRA-CT 2011-004507-20). While results of RESTYLE-HCM are awaited a phase II/III trial, the LIBERTY-HCM study, has already started testing the efficacy of a new, more specific and potent late sodium current inhibitor, eleclazine (Clinicaltrials.gov NCT02291237). LIBERTY-HCM will test the hypothesis that, compared with placebo, eleclazine improves exercise capacity as measured by peak oxygen consumption (VO_2) during cardiopulmonary exercise testing in patients with symptomatic HCM from over 40 centres in Europe and the USA. Additional drugs that have been employed in different preclinical studies and/or pilot clinical trials as possible disease-modifying therapies in HCM are listed in Tables 3 and 4 and include angiotensin II receptor type 1 (AT1)-receptor blockers losartan and valsartan,^{9,57,71} statins,^{72,73} and N-acetyl-cysteine.^{74,75}

Finally, a 'precision medicine' approach is emerging based on the hypothesis that, in selected genetic subsets, HCM is triggered by a hypercontractile state caused by reduced inhibitory effect of the myosin-binding protein C on the cardiac myosin head. By selectively reducing the affinity of myosin for actin, the downstream consequences of sarcomere mutations might be countered in HCM patients, including prevention of phenotype development in the early stages of the disease.⁷⁶ Two phase I studies have been recently launched to assess the effects of MYK-461 (Myokardia, South San Francisco, CA, USA), the first allosteric inhibitor of cardiac myosin tested in man, in patients with HCM (Clinicaltrials.gov NCT02329184 and NCT02356289).

Conclusions

Hypertrophic cardiomyopathy largely remains an orphan disease. In the near future, however, the debut of evidence-based approaches to HCM is likely to revolutionize its management by providing agents targeting disease-specific substrates. Until then, judicious use of the available pharmacological armamentarium may already provide sufficient control of the most common clinical manifestations and complications, allowing normal longevity in the majority of patients. Serial assessment and early identification of disease progression is key for timely implementation of available therapies.

Acknowledgement

This work was supported by the Italian Ministry of Health (RF 2010-2313451 'Hypertrophic cardiomyopathy: new insights from deep sequencing and psychosocial evaluation') and NET-2011-02347173 (Mechanisms and treatment of coronary microvascular dysfunction in patients with genetic or secondary left ventricular hypertrophy).

Supplementary Information

Additional Supporting Information may be found in the online version of this article:

Risk factors for sudden cardiac death in hypertrophic cardiomyopathy according to the 2014 European Society of Cardiology and 2011 American College of Cardiology Foundation/American Heart Association guidelines.

Conflicts of interest: I.O. conducts research for, and has received grants from, Gilead, Menarini International and MyoKardia. The other authors declare no conflicts of interest.

References

- Alcalai R, Seidman JG, Seidman CE. Genetic basis of hypertrophic cardiomyopathy: From bench to the clinics. *J Cardiovasc Electrophysiol* 2008;**19**:104–110
- Mogensen J, Murphy RT, Kubo T, Bahl A, Moon JC, Klausen IC, Elliott PM, McKenna WJ. Frequency and clinical expression of cardiac troponin I mutations in 748 consecutive families with hypertrophic cardiomyopathy. *J Am Coll Cardiol* 2004;**44**:2315–2325.
- Maron BJ. Hypertrophic cardiomyopathy: a systematic review. *JAMA* 2002;**287**:1308–1320.
- Maron BJ, Casey SA, Hauser RG, Aeppli DM. Clinical course of hypertrophic cardiomyopathy with survival to advanced age. *J Am Coll Cardiol* 2003;**42**:882–888.
- Semsarian C, Ingles J, Maron MS, Maron BJ. New perspectives on the prevalence of hypertrophic cardiomyopathy. *J Am Coll Cardiol* 2015;**65**:1249–1254.
- Ho CY, Seidman CE. A contemporary approach to hypertrophic cardiomyopathy. *Circulation* 2006;**113**:e858–e862.
- Captur G, Lopes LR, Mohun TJ, Patel V, Li C, Bassett P, Finocchiaro G, Ferreira VM, Esteban MT, Muthurangu V, Sherrid MV, Day SM, Canter CE, McKenna WJ, Seidman CE, Bluemke DA, Elliott PM, Ho CY, Moon JC. Prediction of sarcomere mutations in subclinical hypertrophic cardiomyopathy. *Circ Cardiovasc Imaging* 2014;**7**:863–871.
- Spoladore R, Maron MS, D'Amato R, Camici PG, Olivetto I. Pharmacological treatment options for hypertrophic cardiomyopathy: High time for evidence. *Eur Heart J* 2012;**33**:1724–1733.
- Axelsson A, Iversen K, Vejstrup N, Ho C, Norsk J, Langhoff L, Ahtarovski K, Corell P, Havndrup O, Jensen M, Bundgaard H. Efficacy and safety of the angiotensin ii receptor blocker losartan for hypertrophic cardiomyopathy: The inherit randomised, double-blind, placebo-controlled trial. *Lancet. Diabetes endocrinol* 2015;**3**:123–131.

10. Ho CY, Lakdawala NK, Cirino AL, Lipshultz SE, Sparks E, Abbasi SA, Kwong RY, Antman EM, Semsarian C, Gonzalez A, Lopez B, Diez J, Orav EJ, Colan SD, Seidman CE. Diltiazem treatment for pre-clinical hypertrophic cardiomyopathy sarcomere mutation carriers: A pilot randomized trial to modify disease expression. *JACC Heart Fail* 2015;**3**:180–188.
11. Authors/Task Force Members, Elliott PM, Anastakis A, Borger MA, Borggrefe M, Cecchi F, Charron P, Hagege AA, Lafont A, Limongelli G, Mahrholdt H, McKenna WJ, Mogensen J, Nihoyannopoulos P, Nistri S, Pieper PG, Pieske B, Rapezzi C, Rutten FH, Tillmanns C, Watkins H. 2014 ESC guidelines on diagnosis and management of hypertrophic cardiomyopathy: The task force for the diagnosis and management of hypertrophic cardiomyopathy of the European Society of Cardiology (ESC). *Eur Heart J* 2014;**35**:2733–2779.
12. Gersh BJ, Maron BJ, Bonow RO, Dearani JA, Fifer MA, Link MS, Naidu SS, Nishimura RA, Ommen SR, Rakowski H, Seidman CE, Towbin JA, Udelson JE, Yancy CW, American College of Cardiology Foundation/American Heart Association Task Force on Practice Guidelines, American Association for Thoracic Surgery, American Society of Echocardiography, American Society of Nuclear Cardiology, Heart Failure Society of A, Heart Rhythm Society, Society for Cardiovascular Angiology. Interventions, Society of Thoracic Surgeons. 2011 ACCF/AHA guideline for the diagnosis and treatment of hypertrophic cardiomyopathy: a report of the American College of Cardiology Foundation/American Heart Association Task Force on practice guidelines. *Circulation* 2011;**124**:e783–e831.
13. Olivetto I, Cecchi F, Poggesi C, Yacoub MH. Patterns of disease progression in hypertrophic cardiomyopathy: an individualized approach to clinical staging. *Circ Heart Fail* 2012;**5**:535–546.
14. Pasqualucci D, Fornaro A, Castelli G, Rossi A, Arretini A, Chiriaci C, Targetti M, Girolami F, Corda M, Orru P, Matta G, Stefano P, Cecchi F, Porcu M, Olivetto I. Clinical spectrum, therapeutic options, and outcome of advanced heart failure in hypertrophic cardiomyopathy. *Circ Heart Fail* 2015;**8**:1014–1021.
15. Maron BJ, Ommen SR, Semsarian C, Spirito P, Olivetto I, Maron MS. Hypertrophic cardiomyopathy: Present and future, with translation into contemporary cardiovascular medicine. *J Am Coll Cardiol* 2014;**64**:83–99.
16. Azarbal F, Singh M, Finocchiaro G, Le VV, Schnitger I, Wang P, Myers J, Ashley E, Perez M. Exercise capacity and paroxysmal atrial fibrillation in patients with hypertrophic cardiomyopathy. *Heart* 2014;**100**:624–630.
17. Finocchiaro G, Haddad F, Knowles JW, Caleshu C, Pavlovic A, Homburger J, Shmargad Y, Sinagra G, Magavern E, Wong M, Perez M, Schnitger I, Myers J, Froelicher V, Ashley EA. Cardiopulmonary responses and prognosis in hypertrophic cardiomyopathy: A potential role for comprehensive noninvasive hemodynamic assessment. *JACC Heart Fail* 2015;**3**:408–418.
18. Maron MS, Olivetto I, Maron BJ, Prasad SK, Cecchi F, Udelson JE, Camici PG. The case for myocardial ischemia in hypertrophic cardiomyopathy. *J Am Coll Cardiol* 2009;**54**:866–875.
19. Spirito P, Autore C, Rapezzi C, Bernabo P, Badagliacca R, Maron MS, Bongioanni S, Cocco F, Estes NA, Barilla CS, Biagini E, Quarta G, Conte MR, Bruzzi P, Maron BJ. Syncope and risk of sudden death in hypertrophic cardiomyopathy. *Circulation* 2009;**119**:1703–1710.
20. Task Force for the Diagnosis and Management of Syncope; European Society of Cardiology (ESC); European Heart Rhythm Association (EHRA); Heart Failure Association (HFA); Heart Rhythm Society (HRS). Moya A, Sutton R, Ammirati F, Blanc JJ, Brignole M, Dahm JB, Deharo JC, Gajek J, Gjesdal K, Krahm A, Massin M, Pepi M, Pezawas T, Ruiz Granell R, Sarasin F, Ungar A, van Dijk JG, Walma EP, Wieling W. Guidelines for the diagnosis and management of syncope (version 2009). *Eur Heart J* 2009;**30**:2631–2671.
21. Williams L, Frenneaux M. Syncope in hypertrophic cardiomyopathy: Mechanisms and consequences for treatment. *Europace* 2007;**9**:817–822.
22. Spirito P, Autore C, Formisano F, Assenza GE, Biagini E, Haas TS, Bongioanni S, Semsarian C, Devoto E, Musumeci B, Lai F, Yeates L, Conte MR, Rapezzi C, Boni L, Maron BJ. Risk of sudden death and outcome in patients with hypertrophic cardiomyopathy with benign presentation and without risk factors. *Am J Cardiol* 2014;**113**:1550–1555.
23. O'Mahony C, Elliott PM. Prevention of sudden cardiac death in hypertrophic cardiomyopathy. *Heart* 2014;**100**:254–260.
24. Maron MS, Olivetto I, Betocchi S, Casey SA, Lesser JR, Losi MA, Cecchi F, Maron BJ. Effect of left ventricular outflow tract obstruction on clinical outcome in hypertrophic cardiomyopathy. *New Engl J Med* 2003;**348**:295–303.
25. O'Mahony C, Jichi F, Pavlou M, Monserrat L, Anastakis A, Rapezzi C, Biagini E, Gimeno JR, Limongelli G, McKenna WJ, Omar RZ, Elliott PM. Hypertrophic Cardiomyopathy Outcomes I. A novel clinical risk prediction model for sudden cardiac death in hypertrophic cardiomyopathy (HCM risk-SCD). *Eur Heart J* 2014;**35**:2010–2020.
26. Maron BJ, Nishimura RA. Surgical septal myectomy versus alcohol septal ablation: assessing the status of the controversy in 2014. *Circulation* 2014;**130**:1617–1624.
27. Thompson DS, Naqvi N, Juul SM, Swanton RH, Coltart DJ, Jenkins BS, Webb-People MM. Effects of propranolol on myocardial oxygen consumption, substrate extraction, and haemodynamics in hypertrophic obstructive cardiomyopathy. *Br Heart J* 1980;**44**:488–498.
28. Nistri S, Olivetto I, Maron MS, Ferrantini C, Coppini R, Grifoni C, Baldini K, Sgalambro A, Cecchi F, Maron BJ. Beta blockers for prevention of exercise-induced left ventricular outflow tract obstruction in patients with hypertrophic cardiomyopathy. *Am J Cardiol* 2012;**110**:715–719.
29. Sherrid MV, Barac I, McKenna WJ, Elliott PM, Dickie S, Chojnowska L, Casey S, Maron BJ. Multicenter study of the efficacy and safety of disopyramide in obstructive hypertrophic cardiomyopathy. *J Am Coll Cardiol* 2005;**45**:1251–1258.
30. Sherrid MV, Shetty A, Winson G, Kim B, Musat D, Alviar CL, Homel P, Balam SK, Swistel DG. Treatment of obstructive hypertrophic cardiomyopathy symptoms and gradient resistant to first-line therapy with beta-blockade or verapamil. *Circ Heart Fail* 2013;**6**:694–702.
31. Sherrid MV, Arabadjian M. A primer of disopyramide treatment of obstructive hypertrophic cardiomyopathy. *Progr Cardiovasc Dis* 2012;**54**:483–492.
32. Hamada M, Ikeda S, Shigematsu Y. Advances in medical treatment of hypertrophic cardiomyopathy. *J Cardiol* 2014;**64**:1–10.
33. Shimada YJ, Passeri JJ, Bagghish AL, O'Callaghan C, Lowry PA, Yannekis G, Abbasa S, Ghoshhajra BB, Rothman RD, Ho CY, Januzzi JL, Seidman CE, Fifer MA. Effects of losartan on left ventricular hypertrophy and fibrosis in patients with nonobstructive hypertrophic cardiomyopathy. *JACC Heart Fail* 2013;**1**:480–487.
34. Ruzek L, Konecny T, Soucek F, Konecny D, Mach L, Ommen SR, Kopecky SL, Nishimura RA. Phosphodiesterase 5 inhibitor use in men with hypertrophic cardiomyopathy. *Am J Cardiol* 2015;**116**:618–621.
35. Spirito P, Rapezzi C, Bellone P, Betocchi S, Autore C, Conte MR, Bezante GP, Bruzzi P. Infective endocarditis in hypertrophic cardiomyopathy: Prevalence, incidence, and indications for antibiotic prophylaxis. *Circulation* 1999;**99**:2132–2137.
36. Maron BJ, Lever H. In defense of antimicrobial prophylaxis for prevention of infective endocarditis in patients with hypertrophic cardiomyopathy. *J Am Coll Cardiol* 2009;**54**:2339–2340; author reply 2340.
37. Dayer MJ, Jones S, Prendergast B, Baddour LM, Lockhart PB, Thornhill MH. Incidence of infective endocarditis in England, 2000–13: a secular trend, interrupted time-series analysis. *Lancet* 2014.
38. Cannon RO 3rd, Rosing DR, Maron BJ, Leon MB, Bonow RO, Watson RM, Epstein SE. Myocardial ischemia in patients with hypertrophic cardiomyopathy: contribution of inadequate vasodilator reserve and elevated left ventricular filling pressures. *Circulation* 1985;**71**:234–243.
39. Tomberli B, Girolami F, Coppini R, Ferrantini C, Rossi A, Cecchi F, Olivetto I. [management of refractory symptoms in hypertrophic cardiomyopathy with restrictive pathophysiology: novel perspectives for ranolazine]. *Giornale italiano di cardiologia*. 2012;**13**:297–303 (in Italian).
40. Sorajja P, Ommen SR, Nishimura RA, Gersh BJ, Berger PB, Tajik AJ. Adverse prognosis of patients with hypertrophic cardiomyopathy who have epicardial coronary artery disease. *Circulation* 2003;**108**:2342–2348.
41. McMurray JJ, Adamopoulos S, Anker SD, Auricchio A, Bohm M, Dickstein K, Falk V, Filippatos G, Fonseca C, Gomez-Sanchez MA, Jaarsma T, Kober L, Lip GY, Maggioni AP, Parkhomenko A, Pieske BM, Popescu BA, Ronnevik PK, Rutten FH, Schwiter J, Seferovic P, Stepinska J, Trindade PT, Voors AA, Zannad F, Zeiger A, Bax JJ, Baumgartner H, Ceconi C, Dean V, Deaton C, Fagard R, Funck-Brentano C, Hasdai D, Hoes A, Kirchhof P, Knuuti J, Kolh P, McDonagh T, Moulin C, Popescu BA, Reiner Z, Sechtem U, Sirnes PA, Tendera M, Torbicki A, Vahanian A, Windecker S, McDonagh T, Sechtem U, Bonet LA, Avraamides P, Ben Lamin HA, Brignole M, Coca A, Cowburn P, Dargie H, Elliott P, Flachskampf FA, Guida GF, Hardman S, Jung B, Merkely B, Mueller C, Nanas JN, Nielsen OW, Orn S, Parissis JT, Ponikowski P. Esc guidelines for the diagnosis and treatment of acute and chronic heart failure 2012: the task force for the diagnosis and treatment of acute and chronic heart failure 2012 of the European Society of Cardiology. Developed in collaboration with the Heart Failure Association (HFA) of the ESC. *Eur Heart J* 2012;**33**:1787–1847.
42. Olivetto I, Maron BJ, Appelbaum E, Harrigan CJ, Salton C, Gibson CM, Udelson JE, O'Donnell C, Lesser JR, Manning WJ, Maron MS. Spectrum and clinical significance of systolic function and myocardial fibrosis assessed by cardiovascular magnetic resonance in hypertrophic cardiomyopathy. *Am J Cardiol* 2010;**106**:261–267.
43. Nistri S, Olivetto I, Betocchi S, Losi MA, Valsecchi G, Pinamonti B, Conte MR, Casazza F, Galderisi M, Maron BJ, Cecchi F. Prognostic significance of left atrial size in patients with hypertrophic cardiomyopathy (from the Italian registry for hypertrophic cardiomyopathy). *Am J Cardiol* 2006;**98**:960–965.
44. Guttman OP, Rahman MS, O'Mahony C, Anastakis A, Elliott PM. Atrial fibrillation and thromboembolism in patients with hypertrophic cardiomyopathy: systematic review. *Heart* 2014;**100**:465–472.
45. Siontis KC, Geske JB, Ong K, Nishimura RA, Ommen SR, Gersh BJ. Atrial fibrillation in hypertrophic cardiomyopathy: Prevalence, clinical correlations, and mortality in a large high-risk population. *JAMA* 2014;**313**:e001002.

AQ16

AQ17

46. Di Donna P, Olivetto I, Delcre SD, Caponi D, Scaglione M, Nault I, Montefusco A, Girolami F, Cecchi F, Haissaguerre M, Gaita F. Efficacy of catheter ablation for atrial fibrillation in hypertrophic cardiomyopathy: impact of age, atrial remodeling, and disease progression. *Europace* 2010;**12**:347–355.
47. Santangeli P, Di Biase L, Themistoclakis S, Raviele A, Schweikert RA, Lakkireddy D, Mohanty P, Bai R, Mohanty S, Pump A, Beheiry S, Hongo R, Sanchez JE, Gallinghouse GJ, Horton R, Dello Russo A, Casella M, Fassini G, Elayi CS, Burkhardt JD, Tondo C, Natale A. Catheter ablation of atrial fibrillation in hypertrophic cardiomyopathy: long-term outcomes and mechanisms of arrhythmia recurrence. *Circ Arrhythm Electrophysiol* 2013;**6**:1089–1094.
48. Bassiouny M, Lindsay BD, Lever H, Saliba W, Klein A, Banna M, Abraham J, Shao M, Rickard J, Kanj M, Tchou P, Dresing T, Baranowski B, Bhargava M, Callahan T, Tarakji K, Cantillon D, Hussein A, Marc Gillinov A, Smedira NG, Wazni O. Outcomes of nonpharmacologic treatment of atrial fibrillation in patients with hypertrophic cardiomyopathy. *Heart Rhythm* 2015;**12**:1438–1447.
49. Guttman OP, Pavlou M, O'Mahony C, Monserrat L, Anastasakis A, Rapezzi C, Biagini E, Gimeno JR, Limongelli G, Garcia-Pavia P, McKenna WJ, Omar RZ, Elliott PM. Hypertrophic Cardiomyopathy Outcomes I. Prediction of thrombo-embolic risk in patients with hypertrophic cardiomyopathy (HCM risk-CVA). *Eur J Heart Fail* 2015;**17**:837–845.
50. Maron BJ, Spirito P, Shen WK, Haas TS, Formisano F, Link MS, Epstein AE, Almqvist AK, Daubert JP, Lawrenz T, Boriani G, Estes NA 3rd, Favale S, Piccininno M, Winters SL, Santini M, Betocchi S, Arribas F, Sherrid MV, Buja G, Semsarian C, Bruzzi P. Implantable cardioverter-defibrillators and prevention of sudden cardiac death in hypertrophic cardiomyopathy. *JAMA* 2007;**298**:405–412.
51. Vriesendorp PA, Schinkel AF, Liebrechts M, Theuns DA, van Cleemput J, Ten Cate FJ, Willems R, Michels M. Validation of the 2014 European Society of Cardiology guidelines risk prediction model for the primary prevention of sudden cardiac death in hypertrophic cardiomyopathy. *Circ Arrhythm Electrophysiol* 2015;**8**:829–835.
52. Ruiz-Salas A, Garcia-Pinilla JM, Cabrera-Bueno F, Fernandez-Pastor J, Pena-Hernandez J, Medina-Palomo C, Barrera-Cordero A, De Teresa E, Alzueta J. Comparison of the new risk prediction model (HCM risk-SCD) and classic risk factors for sudden death in patients with hypertrophic cardiomyopathy and defibrillator. *Europace* 2015.
53. Maron BJ, Casey SA, Chan RH, Garberich RF, Rowin EJ, Maron MS. Independent assessment of the European Society of Cardiology sudden death risk model for hypertrophic cardiomyopathy. *Am J Cardiol* 2015;**116**:757–764.
54. Geske JB, Ommen SR. Role of imaging in evaluation of sudden cardiac death risk in hypertrophic cardiomyopathy. *Curr Opin Cardiol* 2015;**30**:493–499.
55. Chan RH, Maron BJ, Olivetto I, Pencina MJ, Assenza GE, Haas T, Lesser JR, Gruner C, Crean AM, Rakowski H, Udelson JE, Rowin E, Lombardi M, Cecchi F, Tomberli B, Spirito P, Formisano F, Biagini E, Rapezzi C, De Cecco CN, Autore C, Cook EF, Hong SN, Gibson CM, Manning WJ, Appelbaum E, Maron MS. Prognostic value of quantitative contrast-enhanced cardiovascular magnetic resonance for the evaluation of sudden death risk in patients with hypertrophic cardiomyopathy. *Circulation* 2014;**130**:484–495.
56. Wang J, Wang Y, Zou Y, Sun K, Wang Z, Ding H, Yuan J, Wei W, Hou Q, Wang H, Liu X, Zhang H, Ji Y, Zhou X, Sharma RK, Wang D, Ahmad F, Hui R, Song L. Malignant effects of multiple rare variants in sarcomere genes on the prognosis of patients with hypertrophic cardiomyopathy. *Eur J Heart Fail* 2014;**16**:950–957.
57. Maron BJ, Maron MS, Semsarian C. Double or compound sarcomere mutations in hypertrophic cardiomyopathy: a potential link to sudden death in the absence of conventional risk factors. *Heart Rhythm* 2012;**9**:57–63.
58. Schinkel AF, Vriesendorp PA, Sijbrands EJ, Jordaens LJ, ten Cate FJ, Michels M. Outcome and complications after implantable cardioverter defibrillator therapy in hypertrophic cardiomyopathy: Systematic review and meta-analysis. *Circ Heart Fail* 2012;**5**:552–559.
59. O'Mahony C, Elliott P, McKenna W. Sudden cardiac death in hypertrophic cardiomyopathy. *Circ Arrhythm Electrophysiol* 2013;**6**:443–451.
60. Maron BJ, Haas TS, Shannon KM, Almqvist AK, Hodges JS. Long-term survival after cardiac arrest in hypertrophic cardiomyopathy. *Heart Rhythm* 2009;**6**:993–997.
61. Harris KM, Spirito P, Maron MS, Zenovich AG, Formisano F, Lesser JR, Mackey-Bojack S, Manning WJ, Udelson JE, Maron BJ. Prevalence, clinical profile, and significance of left ventricular remodeling in the end-stage phase of hypertrophic cardiomyopathy. *Circulation* 2006;**114**:216–225.
62. Tendra M, Wycisk A, Schneeweiss A, Polonski L, Wodniecki J. Effect of sotalol on arrhythmias and exercise tolerance in patients with hypertrophic cardiomyopathy. *Cardiology* 1993;**82**:335–342.
63. Cecchi F, Olivetto I, Montereggi A, Squillanti G, Dolara A, Maron BJ. Prognostic value of non-sustained ventricular tachycardia and the potential role of amiodarone treatment in hypertrophic cardiomyopathy: assessment in an unselected non-referral based patient population. *Heart* 1998;**79**:331–336.
64. Mancia G, Fagard R, Narkiewicz K, Redon J, Zanchetti A, Bohm M, Christiaens T, Cifkova R, De Backer G, Dominiczak A, Galderisi M, Grobbee DE, Jaarsma T, Kirchhof P, Kjeldsen SE, Laurent S, Manolis AJ, Nilsson PM, Ruilope LM, Schmieder RE, Sirnes PA, Sleight P, Viigimaa M, Waeber B, Zannad F, Redon J, Dominiczak A, Narkiewicz K, Nilsson PM, Burnier M, Viigimaa M, Ambrosioni E, Caulfield M, Coca A, Olsen MH, Schmieder RE, Tsoufis C, van de Borne P, Zamorano JL, Achenbach S, Baumgartner H, Bax JJ, Bueno H, Dean V, Deaton C, Erol C, Fagard R, Ferrari R, Hasdai D, Hoes AV, Kirchhof P, Knuuti J, Kolh P, Lancellotti P, Linhart A, Nihoyannopoulos P, Piepoli MF, Ponikowski P, Sirnes PA, Tamargo JL, Tendra M, Torbicki A, Wijns W, Windecker S, Clement DL, Coca A, Gillebert TC, Tendra M, Rosei EA, Ambrosioni E, Anker SD, Bauersachs J, Hiti J, Cauffield M, De Buyzere M, De Geest S, Derumeaux GA, Erdine S, Farsang C, Funck-Brentano C, Gerc V, Germano G, Gielen S, Haller H, Hoes AW, Jordan J, Kahan T, Komajda M, Lovic D, Mahrholdt H, Olsen MH, Ostergren J, Parati G, Perk J, Polonia J, Popescu BA, Reiner Z, Ryden L, Sirenko Y, Stanton A, Struijker-Boudier H, Tsoufis C, van de Borne P, Vlachopoulos C, Volpe M, Wood DA. 2013 ESH/ESC guidelines for the management of arterial hypertension: the Task Force for the Management of arterial Hypertension of the European Society of Hypertension (ESH) and of the European Society of Cardiology (ESC). *Eur Heart J* 2013;**34**:2159–2219.
65. Konecny T, Brady PA, Orban M, Lin G, Pressman GS, Lehar F, Tomas K, Gersh BJ, Tajik AJ, Ommen SR, Somers VK. Interactions between sleep disordered breathing and atrial fibrillation in patients with hypertrophic cardiomyopathy. *American J Cardiol* 2010;**105**:1597–1602.
66. Kansal MM, Mookadam F, Tajik AJ. Drink more, and eat less: advice in obstructive hypertrophic cardiomyopathy. *American J Cardiol* 2010;**106**:1313–1316.
67. Ashrafian H, McKenna WJ, Watkins H. Disease pathways and novel therapeutic targets in hypertrophic cardiomyopathy. *Circ Res* 2011;**109**:86–96.
68. Abzug K, Elliott P, McKenna W, Phan TT, Nallur-Shivu G, Ahmed I, Maher AR, Kaur K, Taylor J, Henning A, Ashrafian H, Watkins H, Frenneaux M. Metabolic modulator perhexiline corrects energy deficiency and improves exercise capacity in symptomatic hypertrophic cardiomyopathy. *Circulation* 2010;**122**:1562–1569.
69. Horowitz JD, Chirkov YY. Perhexiline and hypertrophic cardiomyopathy: A new horizon for metabolic modulation. *Circulation* 2010;**122**:1547–1549.
70. Coppini R, Ferrantini C, Mazzoni L, Sartiani L, Olivetto I, Poggesi C, Cerbai E, Mugelli A. Regulation of intracellular Na⁺ in health and disease: Pathophysiological mechanisms and implications for treatment. *Global Cardiol Sci Pract* 2013;**2013**:222–242.
71. Lim DS, Lutucuta S, Bachireddy P, Youker K, Evans A, Entman M, Roberts R, Marian AJ. Angiotensin II blockade reverses myocardial fibrosis in a transgenic mouse model of human hypertrophic cardiomyopathy. *Circulation* 2001;**103**:789–791.
72. Senthil V, Chen SN, Tsybouleva N, Halder T, Nagueh SF, Willerson JT, Roberts R, Marian AJ. Prevention of cardiac hypertrophy by atorvastatin in a transgenic rabbit model of human hypertrophic cardiomyopathy. *Circ Res* 2005;**97**:285–292.
73. Nagueh SF, Lombardi R, Tan Y, Wang J, Willerson JT, Marian AJ. Atorvastatin and cardiac hypertrophy and function in hypertrophic cardiomyopathy: a pilot study. *Eur J Clin Invest* 2010;**40**:976–983.
74. Lombardi R, Rodriguez G, Chen SN, Ripplinger CM, Li W, Chen J, Willerson JT, Betocchi S, Wickline SA, Efimov IR, Marian AJ. Resolution of established cardiac hypertrophy and fibrosis and prevention of systolic dysfunction in a transgenic rabbit model of human cardiomyopathy through thiol-sensitive mechanisms. *Circulation* 2009;**119**:1398–1407.
75. Wilder T, Ryba DM, Wieczorek DF, Wolska BM, Solaro RJ. N-acetylcysteine reverses diastolic dysfunction and hypertrophy in familial hypertrophic cardiomyopathy. *Am J Physiol Heart Circ Physiol* 2015;**309**:H1720–H1730.
76. Spudich JA. The myosin mesa and a possible unifying hypothesis for the molecular basis of human hypertrophic cardiomyopathy. *Biochem Soc Trans* 2015;**43**:64–72.

QUERIES TO BE ANSWERED BY AUTHOR

IMPORTANT NOTE: Please mark your corrections and answers to these queries directly onto the proof at the relevant place. **DO NOT** mark your corrections on this query sheet.

Queries from the Copyeditor:

- AQ1.** Please confirm that given names (red) and surnames/family names (green) have been identified correctly OK
- AQ2. Author:** E-mail: iacopo.olivotto@gmail.com —add telephone and Fax number for this author? Telephone number and fax are provided only for Dr. Ammirati
- AQ3. Author/Editor:** Braunwald —provide reference here?
- AQ4. Author:** Is the text OK now : **mg/day** ('die' changed to 'day' here and below) ok
- AQ5. Author:** Is the text OK: **20 mg once daily**
- AQ6. Author:** Is the text OK: **and 10 mg twice daily for bisoprolol**
- AQ7. Author:** o.i.d. —please provide in full here and elsewhere in Table abbreviation
AQ7: Please change in: "once a day (qd)" and use qd as abbreviation
- AQ8. Author:** Please define: **CHA2DS2-VASc** in Table footnote
- AQ9. Author:** Does the following text make sense (something missing): **Patient selection, as high recurrence rates are expected in older patients with advanced symptoms and marked left atrial dilatation?**
- AQ10. Author:** Please give **oxy.** in full
- AQ11. Author:** Please define: **[Ca]²⁺** in Table footnote
- AQ12. Author:** **33 and 9** —are these references?
- AQ13. Author:** is the updated footnote correct?
- AQ14. Author:** Please supply more details of **RESTYLE-HCM; EUDRA-CT 2011-004507-20**
- AQ15. Author:** please insert a statement regarding any funding received in respect of this study
- AQ16. Author:** Please supply the volume number and page range
- AQ17. Author:** Please confirm the page range
- AQ18. Author:** Please supply the volume number and page range
- AQ19. Author:** Please confirm the volume number
-