



UNIVERSITÀ
DEGLI STUDI
FIRENZE

FLORE

Repository istituzionale dell'Università degli Studi di Firenze

The impact of ileal pouch-anal anastomosis on graft survival following liver transplantation for primary sclerosing cholangitis

Questa è la Versione finale referata (Post print/Accepted manuscript) della seguente pubblicazione:

Original Citation:

The impact of ileal pouch-anal anastomosis on graft survival following liver transplantation for primary sclerosing cholangitis / Trivedi P.J.; Reece J.; Laing R.W.; Slaney E.; Cooney R.; Gunson B.K.; Kamarajah S.K.; Pinkney T.; Thompson F.; Muiesan P.; Schlegel A.; Hirschfield G.M.; Iqbal T.; Ferguson J.. - In: ALIMENTARY PHARMACOLOGY & THERAPEUTICS. - ISSN 0269-2813. - ELETTRONICO. - 48:(2018), pp. 322-

Availability:

The webpage <https://hdl.handle.net/2158/1199190> of the repository was last updated on 2020-07-02T16:32:39Z

Published version:

DOI: 10.1111/apt.14828

Terms of use:

Open Access

La pubblicazione è resa disponibile sotto le norme e i termini della licenza di deposito, secondo quanto stabilito dalla Policy per l'accesso aperto dell'Università degli Studi di Firenze (<https://www.sba.unifi.it/upload/policy-oa-2016-1.pdf>)

Publisher copyright claim:

La data sopra indicata si riferisce all'ultimo aggiornamento della scheda del Repository FloRe - The above-mentioned date refers to the last update of the record in the Institutional Repository FloRe

(Article begins on next page)



The impact of ileal pouch-anal anastomosis on graft survival following liver transplantation for primary sclerosing cholangitis

P. J. Trivedi^{1,2,3,4} | J. Reece³ | R. W. Laing^{1,2} | E. Slaney² | R. Cooney³ |
 B. K. Gunson^{1,2} | S. K. Kamarajah¹ | T. Pinkney⁵ | F. Thompson^{2,4} |
 P. Muiesan² | A. Schlegel^{2,6} | G. M. Hirschfield^{1,2,4} | T. Iqbal³ | J. Ferguson^{2,4}

¹National Institute for Health Research (NIHR) Birmingham Biomedical Research Centre (BRC), Institute of Immunology and Immunotherapy, University of Birmingham, Birmingham, UK

²Liver Unit, University Hospitals Birmingham NHS Foundation Trust, Queen Elizabeth Hospital, Birmingham, UK

³Department of Gastroenterology, University Hospitals Birmingham NHS Foundation Trust, Queen Elizabeth Hospital, Birmingham, UK

⁴Centre for Rare Diseases, Institute of Translational Medicine, University of Birmingham, Birmingham, UK

⁵Department of Colorectal Surgery, University Hospitals Birmingham NHS Foundation Trust, Queen Elizabeth Hospital, Birmingham, UK

⁶Swiss HPB and Transplantation Center, University Hospital Zurich, Zurich, Switzerland

Correspondence

Dr. P.J. Trivedi, National Institute for Health Research (NIHR) Birmingham Biomedical Research Centre (BRC), Institute of Immunology and Immunotherapy, University of Birmingham, Birmingham, UK
 Email: doctortrivedi@doctors.org.uk and

Dr. J. Ferguson, Liver Unit, University Hospitals Birmingham NHS Foundation Trust, Queen Elizabeth Hospital, Birmingham, UK
 Email: James.Ferguson@uhb.nhs.uk

Summary

Background: Liver transplantation is the only life-extending intervention for primary sclerosing cholangitis (PSC). Given the co-existence with colitis, patients may also require colectomy; a factor potentially conferring improved post-transplant outcomes.

Aim: To determine the impact of restorative surgery via ileal pouch-anal anastomosis (IPAA) vs retaining an end ileostomy on liver-related outcomes post-transplantation.

Methods: Graft survival was evaluated across a prospectively accrued transplant database, stratified according to colectomy status and type.

Results: Between 1990 and 2016, 240 individuals with PSC/colitis underwent transplantation (cumulative 1870 patient-years until first graft loss or last follow-up date), of whom 75 also required colectomy. A heightened incidence of graft loss was observed for the IPAA group vs those retaining an end ileostomy (2.8 vs 0.4 per 100 patient-years, log-rank $P = 0.005$), whereas rates between IPAA vs no colectomy groups were not significantly different (2.8 vs 1.7, $P = 0.1$). In addition, the ileostomy group experienced significantly lower graft loss rates vs. patients retaining an intact colon ($P = 0.044$). The risks conferred by IPAA persisted when taking into account timing of colectomy as related to liver transplantation via time-dependent Cox regression analysis. Hepatic artery thrombosis and biliary strictures were the principal aetiologies of graft loss overall. Incidence rates for both were not significantly different between IPAA and no colectomy groups ($P = 0.092$ and $P = 0.358$); however, end ileostomy appeared protective ($P = 0.007$ and 0.031 , respectively).

Conclusion: In PSC, liver transplantation, colectomy + IPAA is associated with similar incidence rates of hepatic artery thrombosis, recurrent biliary strictures and re-transplantation compared with no colectomy. Colectomy + end ileostomy confers more favourable graft outcomes.

1 | INTRODUCTION

Primary sclerosing cholangitis (PSC) is a chronic, progressive cholangiopathy for which therapy other than liver transplantation is ineffective.¹ While PSC is considered to be a rare disease,² it is one associated with significant and disproportionate unmet need, wherein ~50% of patients reach a clinical endpoint of death or liver transplantation.^{3,4} Indeed, PSC accounts for >10% of all United Kingdom liver transplant activity, while also being the lead indication for transplantation in Nordic countries.^{5,6} Although transplantation is a proven life-extending intervention, the incidence of graft loss is significantly greater compared with that observed for non-PSC aetiologies.⁷

The vast majority of patients with PSC also develop inflammatory bowel disease (IBD) at some point, predominantly colitis phenotypically.^{3,8} While the clinical course of gut and liver disease do not necessarily parallel, a series of epidemiological findings indicate that co-existence of colitis is associated with poorer transplant-free survival when compared with PSC patients without an IBD history.^{3,9} Moreover, rates of progression to liver transplantation or death may be lower for patients treated with colectomy prior to PSC diagnosis.¹⁰

Following liver transplantation, colectomy does not appear protective against graft loss per se,¹¹ although data from several centres indicate that retention of an intact colon, particularly one associated with ongoing inflammatory activity post-transplant, increases the risk of developing post-transplant complications including disease recurrence and hepatic artery thrombosis.^{7,12-16}

The definitive, first-line surgical treatment for patients with ulcerative colitis (UC) refractory to medical therapy is a subtotal colectomy.¹⁷ This can either be performed leaving an end ileostomy in situ, or followed by ileorectal anastomosis (IRA), or restorative proctocolectomy and ileal pouch-anal anastomosis (IPAA). In patients with UC alone, health-related global quality of life is similar for 'well-informed' individuals choosing to retain an ileostomy vs those with a pelvic pouch,^{18,19} the latter being opted for in approximately 30% of cases.²⁰ This rate has remained relatively constant over the last decade and outcomes are generally good for patients without PSC.

In a Nationwide study from Sweden, the pouch failure rates following restorative proctocolectomy were not significantly different between patients with UC alone vs PSC/UC,²¹ although other investigators have reported consistently poorer nocturnal pouch function and worse quality of life scores in the latter group, in addition to high rates of recurrent pouchitis, pouch mucosal atrophy and dysplastic change.²²⁻²⁴ With respect to the post-liver transplant setting, 58%-62% of patients may develop exacerbating features of acute pouchitis.²⁵⁻²⁷ IRA may also not be favoured given the increased risk of rectal cancer associated with PSC specifically.^{28,29}

While the frequency of pouch-related complications is well documented in the PSC literature, the impact of IPAA on graft survival following liver transplantation is ill defined. To this effect, we

determined the post-transplant clinical course in PSC patients with an IPAA, specifically compared with those who elected to retain an end ileostomy following their colonic resection, or individuals with colitis yet no colectomy. Our aim was to improve the post-transplant survival estimates for patients and further understand the recipient risk factors contributing to graft loss.

2 | PATIENTS AND METHODS

2.1 | Study population

We reviewed a prospectively collected, well-characterised database of all adult patients undergoing liver transplantation at the University Hospitals Birmingham NHS Foundation Trust from 1990 up to January 2016. The hospital transplant database is maintained prospectively, details of which can be found elsewhere.³⁰ The immunosuppression protocol for liver transplant recipients across our study period is provided in Table S1. In order to ensure robustness, accuracy and completeness of data, the transplant database was cross-referenced with an independently accrued registry of all patients having previously attended or under current follow-up of our dedicated PSC clinic. Our intent-to-study population comprised all patients undergoing liver transplantation with PSC and colitis.

Details pertaining to IBD and colectomy status (including type IPAA or ileostomy) were collected retrospectively for individuals having undergone colonic resection prior to transplantation, and prospectively in those requiring bowel surgery at any point in the post-transplant course. All those with an intact colon underwent at least one colonoscopy following liver transplantation. Surveillance colonoscopy continued for patients with known colitis, until the point of colectomy or death, in keeping with recommended intervals during the era of clinical follow-up.^{31,32}

2.2 | Clinical endpoints

The "time-dependent" primary clinical endpoint for our study was the incidence rate of first graft loss (death censored). Given the starting point and prolonged observation period of our study, aetiologies of graft loss were classified broadly, according to hepatic artery thrombosis, recurrent biliary stricturing disease in the absence of hepatic artery occlusion, graft rejection, and primary graft non-function. Secondary endpoints included the incidence rate of recipient mortality, or graft loss/mortality as a combined outcome measure. Patients were censored at the date of last follow-up if they did not meet the clinical endpoint in question.

2.3 | Statistical analysis

Data are presented using the median and interquartile range (IQR) for continuous variables. The nonparametric Mann-Whitney *U* test was used to determine whether significant differences existed

between 2 groups or the Kruskal-Wallis test with Bonferroni-Dunn post hoc correction with >2 groups. Differences in nominal data were compared by Fisher's exact test. A *P* value of <0.05 was deemed statistically significant. Risk stratification as pertains to clinical outcomes' analysis was performed through Kaplan-Meier survivorship estimates, and significant differences between groups were assessed by Log-rank/Mantel-Cox testing. The proportion of clinical events is presented as incidence rates (IR) per 100-patient-years (pt-yrs) with respective confidence intervals (95% CI). Time zero was set at the point of first liver transplantation. Given that colorectal resection may be performed after liver transplantation in PSC, the impact of colectomy "type" (IPAA or retaining an end ileostomy) was also determined as a time-dependent covariate via Cox regression analysis.³³ All data were analysed using IBM® SPSS® v.23.0 (Armonk, NY: IBM Corp.).

2.4 | Quality control and ethical approval

Completeness, plausibility and validity of the data were independently verified (by PJT, JR and ES), including personalised objective review of all historical medical charts. Local regulatory board approval was obtained prior to study initiation and database/chart review (CAB-04186-12 and CARMS-02246).

3 | RESULTS

3.1 | Characteristics of the patient population

Over a 26-year observation period, 240 patients with PSC and colitis underwent liver transplantation and comprised our intended study population (175 patients were men; median age of the overall cohort at time of transplant of 47 years [IQR 37-57 years]). Across this cohort, we observed 27 incidents of graft loss and 88 recipient deaths over time, yielding a cumulative follow-up until re-transplantation or mortality of 1870 patient-years and 2043 patient-years, respectively (Figure 1).

3.2 | Colectomy does not protect against liver graft loss or recipient mortality

Overall, 31% of patients with PSC and colitis underwent colectomy (*n* = 75/240), either prior to or following first liver transplantation and before reaching the primary clinical endpoint. Observing the study cohort in its entirety, the incidence of graft loss or patient mortality was no different between the colectomy vs no colectomy groups (Figure 2), even on restricting analysis to those undergoing colonic resection prior to liver transplantation (Figure S1).

We observed no significant prognostic impact with regard to graft loss conferred by male sex, recipient age at time of transplant or at time of colectomy, pre-transplant MELD score, era in which transplantation was performed, biliary anastomosis type, split liver donation, or organ donation after circulatory death (*P* value >0.05 for all tested covariates).

3.3 | The incidence of graft loss is increased for patients with IPAA

Within the colectomy group, 28% (21/75 patients) subsequently underwent creation of an IPAA, akin to the rate reported for UC patients overall.²⁰ Formation of IPAA was more common when colonic resection took place prior to liver transplantation (*n* = 14/21 vs 20/54 patients who retained end ileostomy, *P* = 0.024) and when surgery was performed at a younger age (39 vs 49 years, *P* = 0.001; Table 1). Overall, 76 patients from our entire cohort (32%) developed at least one episode of acute rejection, with no significant difference between our three study groups (Chi-square *P* = 0.710).

All 21 patients with an IPAA reported deterioration in symptoms related to pouch function, subjectively, within 12 months of liver transplantation. Of 21 patients, 15 patients displayed endoscopically and histologically confirmed inflammation during this time; and all episodes were acute by definition,³⁴ albeit recurrent at a frequency <3 times per year.

Although colectomy overall was not protective, we observed significant differences in the incidence of graft loss between the IPAA patient group (IR: 2.8 [95% CI: 2.0-4.5]; 1-, 5-, and 10-year graft loss rates: 85%, 79% and 70%), those without colectomy (IR: 1.7 [1.5-2.1], 91%, 88% and 88%) and the ileostomy group (IR: 0.4 [0.3-0.5], 1-, 5-, and 10-year graft loss rates: 100%, 98% and 95%) (overall log-rank *P* value between the 3 groups = 0.038; Figure 3), findings which persisted in subanalysis only of patients undergoing colonic resection prior to liver transplantation (Figure S2).

In a direct pairwise comparison, it became apparent that statistically significant differences were attributable to improved liver graft survival experienced by the end ileostomy group vs patients with an IPAA and compared with the no colectomy group (log-rank *P* value = 0.005 and 0.044, respectively) (Figure 3). By contrast, the incidence of graft loss was similar between the IPAA group and those without colectomy (*P* = 0.1).

However, when evaluating the impact of colectomy type as a time-dependent covariate in Cox regression analysis, individuals with an IPAA carried greater risk of graft loss vs both the ileostomy (time adjusted HR: 7.32, 95% CI 1.42-37.83, *P* = 0.017) and no colectomy groups (time adjusted hazard ratio [HR]: 3.15, 95% CI 1.17-8.50, *P* = 0.023).

Between our colectomy groups more specifically, IPAA was more often fashioned when the indication for colonic resection was active colitis (Table 1). Nevertheless, the negative impact of IPAA on graft survival was retained in a subanalysis within the latter cohort specifically (Figure 4).

3.4 | The incidence of post-transplant complications is attenuated in patients retaining an ileostomy, but not an IPAA

Hepatic artery thrombosis (44%) and recurrent biliary stricturing disease (37%) comprised the principal aetiologies of graft loss in our

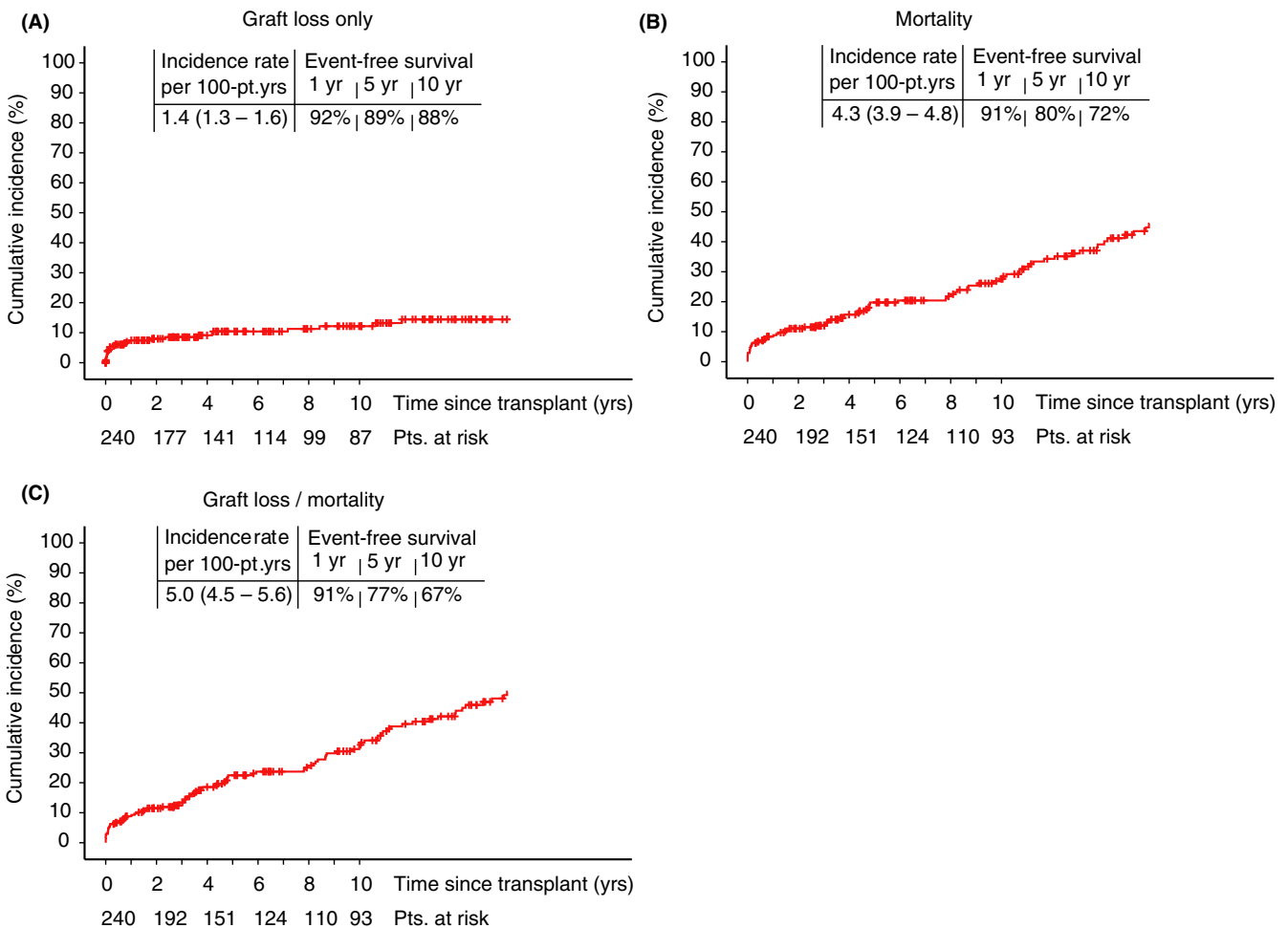


FIGURE 1 Clinical outcomes following liver transplantation for primary sclerosing cholangitis. Kaplan-Meier estimates illustrating the incidence of (A) graft loss, (B) patient mortality, and (C) graft loss/patient mortality as a combined endpoint in our overall PSC/colitis cohort undergoing liver transplantation. Incidence rates are presented per 100-patient-years and the respective 95% confidence intervals. Event-free survival rates are calculated using the life-tables method. Time zero is set from the point of liver transplantation. PSC, primary sclerosing cholangitis; Pt. yrs., patient years; Pts. at risk, patients at risk

overall cohort, with lesser contributions from primary graft nonfunction and acute graft rejection (15% and 4%, respectively).

As such, 25 individual patients developed hepatic artery thrombosis (10%); and independently, 75 patients developed recurrent biliary strictures (31%), contributing to 12 and 10 incidents of 1st graft loss, respectively. The event rate of hepatic artery thrombosis was elevated in the IPAA group by greater than fourfold that of the ileostomy group (IR: 2.8 [95% CI: 2.0-4.6] vs 0.6 [95% CI 0.5-0.7] per-100-pt-yrs, respectively; log-rank $P = 0.007$); but not significantly different compared with the patient cohort retaining an intact colon (IR: 1.5 [1.3-1.8] per-100-pt-yrs; $P = 0.092$). No differences were found in the proportion of donors with hepatic artery anomaly across the 3 groups, although 6 recipients did require formation of an aortic conduit (IPAA, $n = 1$; no colectomy group, $n = 5$). A list of the anatomical variants and arterial reconstruction types performed is provided in Tables S2 and S3.

Our institution and others have previously reported a lower incidence of recurrent biliary stricturing disease post-transplant for

patients undergoing colectomy.^{12-14,16} In the present cohort, we found that this potentially protective effect was confined to patients retaining an end ileostomy (Figure 5A), whereas the incidence of recurrent biliary strictures was not significantly different between IPAA and no colectomy groups (Figure 5B). Episodes of acute rejection did not significantly impact the development of recurrent biliary disease (HR: 1.605, 95% CI: 0.647-1.752, $P = 0.804$), neither posed a risk factor for graft loss overall (HR: 0.913, 95% CI: 0.409-2.036, $P = 0.823$).

No significant differences were seen across our 3 groups in terms of patient mortality or graft loss/mortality as a combined endpoint (Figure 6).

4 | DISCUSSION

In Europe and North America, the burden of PSC on liver transplant services is substantial, given a critical absence of effective medical

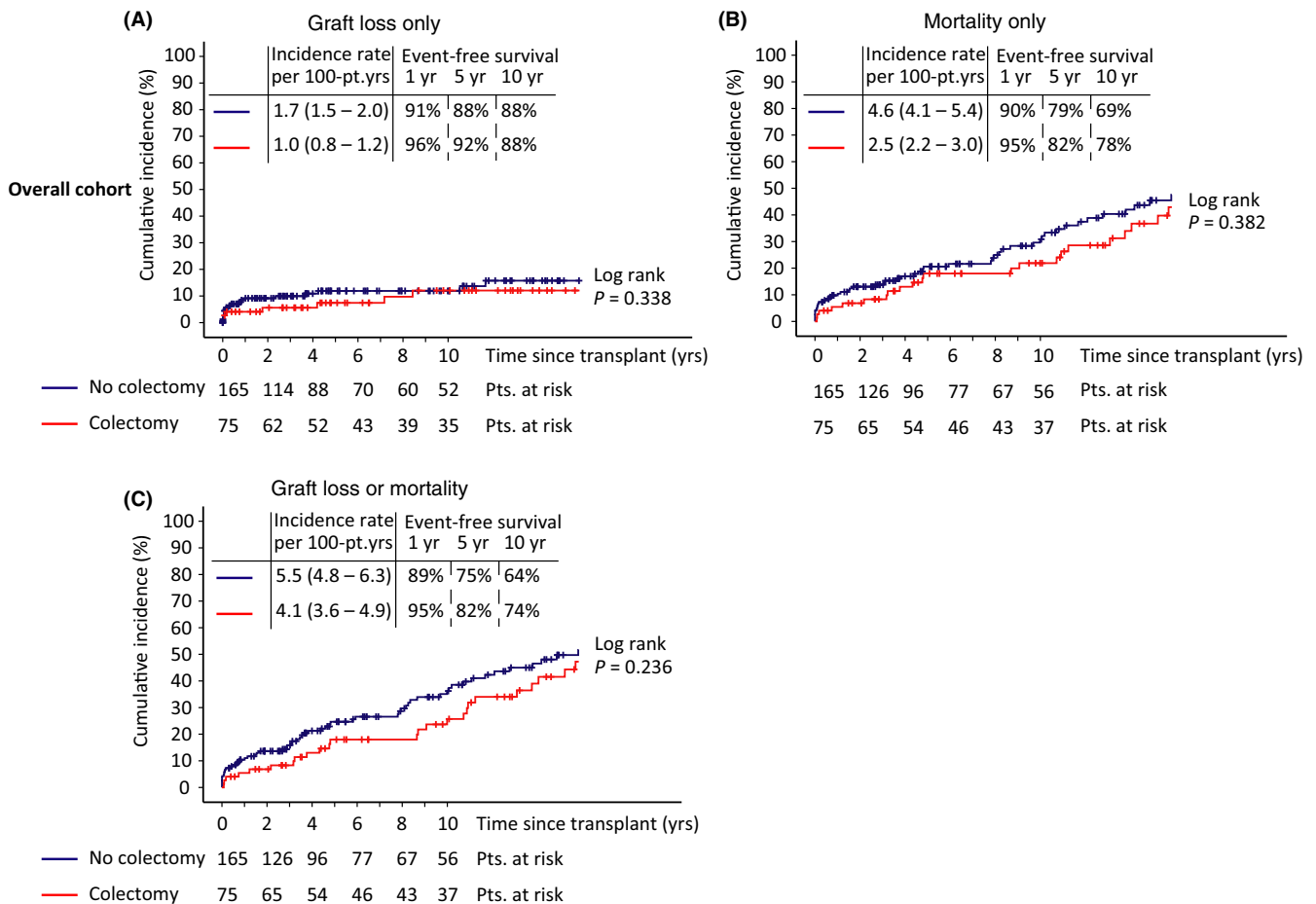


FIGURE 2 Post-liver transplant clinical course according to colectomy status. Kaplan-Meier estimates stratified according to colectomy status for all transplanted PSC patients with colitis, specifically for graft loss only (A), mortality only (B) and graft loss/mortality as a combined clinical endpoint (C). Incidence rates are presented per 100-patient-years and the respective 95% confidence intervals. Event-free survival rates are calculated using the life-tables method. Time zero is set from the point of liver transplantation. PSC, primary sclerosing cholangitis; Pt. yrs, patient years; Pts. at risk, patients at risk

therapy. A societal impact is also evident given the high frequency with which graft loss occurs relative to other aetiologies.^{15,35} As clinicians we strive to provide the best donor organ possible to our patients, as well as identify putative risk factors for loss that sit with the recipient. An interesting observation is the fact that persistence of colitis after transplantation may increase the risk of biliary disease recurrence,^{12-14,16} although this does not always translate to changes in graft survival. Indeed, many individuals still experience graft loss in the absence of recurrent PSC and despite undergoing colectomy.¹¹

To further understand the clinical course that patient's experience, and to offer better counselling specifically to those needing colonic resection, we examined the impact of colectomy type across a large PSC/UC transplant cohort. In so doing, we identify IPAA as a significant risk factor for graft loss, even for patients undergoing colectomy prior to transplantation or when the impact of colectomy type was determined in time-dependent covariate analysis. Conversely, graft survival was maximised in the colectomy group retaining an end ileostomy.

The main aetiologies necessitating re-transplantation in our studied cohort were hepatic artery thrombosis or recurrent biliary disease. As discussed, the presence of an intact colon has been put forward as a risk factor for the latter,^{12-14,16} albeit inconsistently validated.^{11,36,37} Herein, we identify that any protective effect conferred following colectomy (with regard to recurrent biliary disease) is skewed towards the patient group retaining an end ileostomy, whereas no benefit is evident for patients with an IPAA. As patients with PSC and IPAA often develop pouchitis and poorer pouch function,²³ it is plausible that persistent or recurrent episodes of intestinal inflammation also contribute to an elevated risk of thrombotic injury, akin to that when the colon is retained.^{7,12-14,16,38} Although speculative, evidence to support this hypothesis includes the fact that our ileostomy group experienced the lowest incidence of hepatic artery thrombosis; in addition to findings that show persistent subclinical intestinal inflammation in PSC associated colitis,^{39,40} associations between pouchitis and thrombocytosis,⁴¹ and heightened platelet activation during active IBD.⁴²

TABLE 1 Characteristics of PSC/UC patients undergoing liver transplantation

	IPAA (n = 21)	End ileostomy (n = 54)	UC but no colectomy (n = 165)
Male sex	19 (90%)	44 (81%)	112 (68%)
Recipient age at time of liver transplantation, years	41 (34-55)	49 (42-56)	47 (35-59)
MELD score pre-transplantation ^a	17 (12-27)	16 (11-21)	13 (10-19)
Era of transplantation			
1990-2000	8 (38%)	20 (37%)	50 (30%)
2000-2010	8 (38%)	21 (39%)	51 (31%)
2010-2016	5 (24%)	13 (24%)	64 (39%)
Organ donation after circulatory death			
Living-related organ donation	0 (0%)	0 (0%)	2 (1%)
Split liver donation	1 (5%)	3 (6%)	18 (11%)
Duct-to-duct biliary anastomosis	3 (14%)	8 (15%)	17 (10%)
Episode of acute rejection			
Greater than 1 episode of acute rejection	1	2	9
Age at time of colectomy, years	39 (33-43)	49 (39-58)	
Era of colectomy			
1990-2000	11 (52%)	15 (28%)	
2000-2010	6 (29%)	22 (41%)	
2010-2016	4 (19%)	17 (31%)	
Colectomy post liver transplantation	7 (33%)	33 (61%)	
Colectomy indication			
Active colitis	20 (95%)	35 (65%)	
Dysplasia/neoplasia	1 (5%)	12 (22%)	
Combination	0 (0%)	4 (7%)	
Other	0 (0%)	3 (6%)	

IPAA, ileal pouch-anal anastomosis; MELD, model for end-stage liver disease score; UC, ulcerative colitis.

^aMELD scores not captured for procedures performed prior to January 1994 (n = 36/240; n = 2, 6 and 28 patients in the IPAA, end ileostomy and no colectomy groups, respectively).

While speculative, our data argue against the fact that an aggressive 'liver phenotype' post-transplant is driven purely by predisposition towards aggressive IBD. This is because colectomy overall, a marker of colitis activity in its own right, was in itself not a risk factor for re-transplantation. Instead, the negative impact on graft outcome was associated with either (1) retaining an intact colon post-transplant, and by proxy, persistence of ulcerative colitis as a comorbidity, or (2) formation of IPAA in the event colectomy was performed. Detailing the pathogenic mechanisms of PSC and pouchitis are beyond the scope of the current study, but of interest, mucosal dysbiosis has been called into question in both conditions.⁴³ Whether unique commensal disturbances correlate with risk of allograft recurrence, thromboembolic events or actual graft loss is also an area of ongoing investigation.⁴⁴ Given the increased incidence of hepatic artery thrombosis in patients with PSC and IBD,^{7,38} which we now confirm is relevant to those with IPAA, a dedicated evaluation of thrombotic tendency is needed in this at-risk population.⁴⁵

An early study from the Mayo clinic indicated a 10-year graft loss rate of 12.5% for transplanted PSC patients with an IPAA.⁴⁶ The Cleveland Clinic have also published their experience; and in a

total cohort of 79 transplanted PSC patients, they also found an increased frequency of hepatic artery thrombosis (27% in the IPAA group vs 18% in the no colectomy group) although surprisingly none went onto be re-transplanted, and a comparative outcomes' analysis against a control ileostomy group was not presented.²⁷ By contrast, ours is also the first study to robustly determine the impact of colectomy status and type in a time-dependent outcomes' analysis for patients with PSC/UC and show improved graft survival when patients elect to retain an ileostomy.

In selected studies, acute rejection has also been linked to development of recurrent biliary disease post-transplantation,¹⁵ and it is conceivable that alloreactive immune responses may recruit long-lived memory T cells from the gut implicated with the development of PSC prior to transplantation. Alternatively, abrupt changes in immunosuppression while treating rejection may trigger immune reconstitution and subsequent reactivity to biliary epithelial antigens associated with the development of recurrent disease. However, links between acute rejection and recurrent disease are inconsistently validated; and despite poorer outcomes in our IPAA group, acute rejection occurred at a similar frequency to those

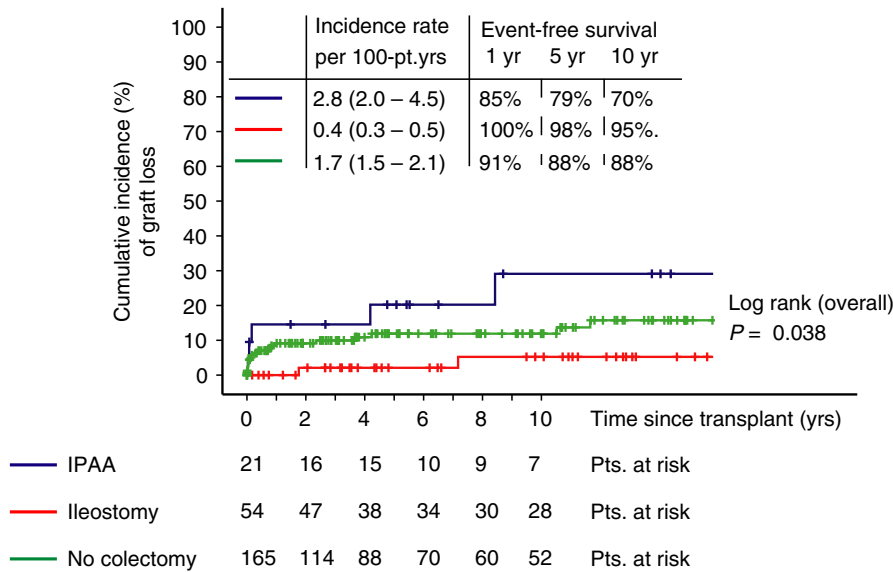


FIGURE 3 Liver graft loss rates following transplantation according to colectomy type. Kaplan-Meier survival estimates of liver graft loss stratified by colectomy type for all transplanted PSC patients with colitis. Incidence rates are presented per 100-patient-years and the respective 95% confidence intervals. Event-free survival rates are calculated using the life-tables method. Time zero is set from the point of liver transplantation. Results of the overall log-rank test are presented in the graphic. Outcome of testing in a pairwise Log-rank test is as follows: IPAA vs the ileostomy group; $P = 0.005$; no colectomy vs. the ileostomy group; P value = 0.044; and IPAA vs no colectomy group, $P = 0.1$. IPAA, ileal pouch-anal anastomosis; PSC, primary sclerosing cholangitis; Pt. yrs., patient years; Pts. at risk, patients at risk

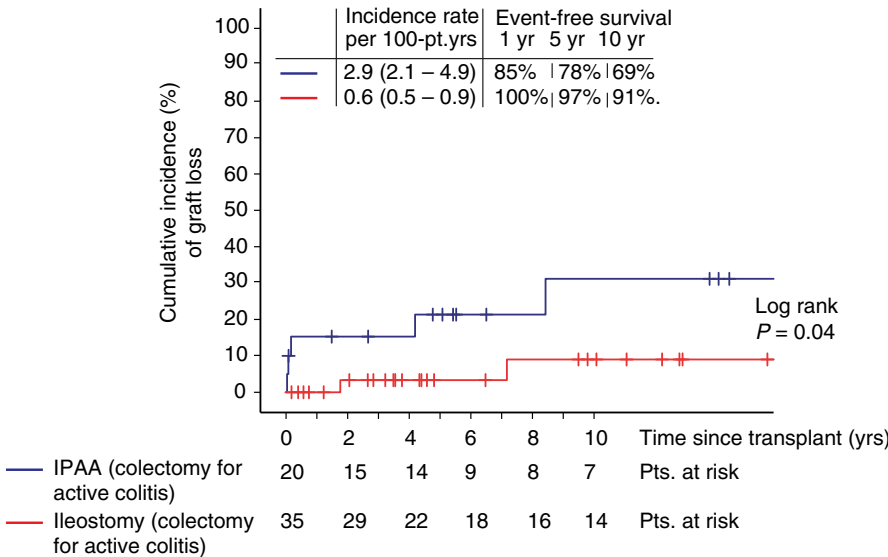


FIGURE 4 Liver graft loss rates following transplantation in patients undergoing colectomy for medically refractory colitis. Kaplan-Meier survival estimates of liver graft loss specifically in PSC patients who underwent colectomy for medically refractory colitis and stratified by colectomy type. Incidence rates are presented per 100-patient-years and the respective 95% confidence intervals. Event-free survival rates are calculated using the life-tables method. Time zero is set from the point of liver transplantation. IPAA, ileal pouch-anal anastomosis; PSC, primary sclerosing cholangitis; Pt. yrs., patient years; Pts. at risk, patients at risk

having an ileostomy or without colectomy. Moreover, no causal relationship was identified between acute rejection and development of either recurrent biliary disease or graft loss overall.

The therapeutic arena of IBD continues to evolve, and with regard to PSC/colitis specifically, a wealth of attention has focussed in targeting the integrin $\alpha4\beta7$.^{47,48} Although this strategy may not impact liver biochemistry,⁴⁷ the potential role in attenuating disease progression is of particular interest given that recruitment of $\alpha4\beta7^+$ mucosal lymphocytes are implicated in the pathogenesis of PSC liver disease,⁴⁹ including recurrence post-transplantation for patients with colitis and an intact colon.¹⁵

While a single-centre report, the Birmingham liver unit contributes 25% of all liver transplant activity in the United Kingdom.⁵ Our transplant database is maintained prospectively, but we nevertheless lack historical data such as quantifiable IBD severity scores, extent of colonic involvement and pharmacological treatment regimens; neither have we accrued details on IPAA function and quality of life indices, or severity of liver disease at the time colectomy was undertaken. This is because the tertiary referral nature of our transplant unit means that for many patients, IBD care delivery was undertaken at a different centre. An additional restriction is the fact that our IPAA group contains a limited number of patients,

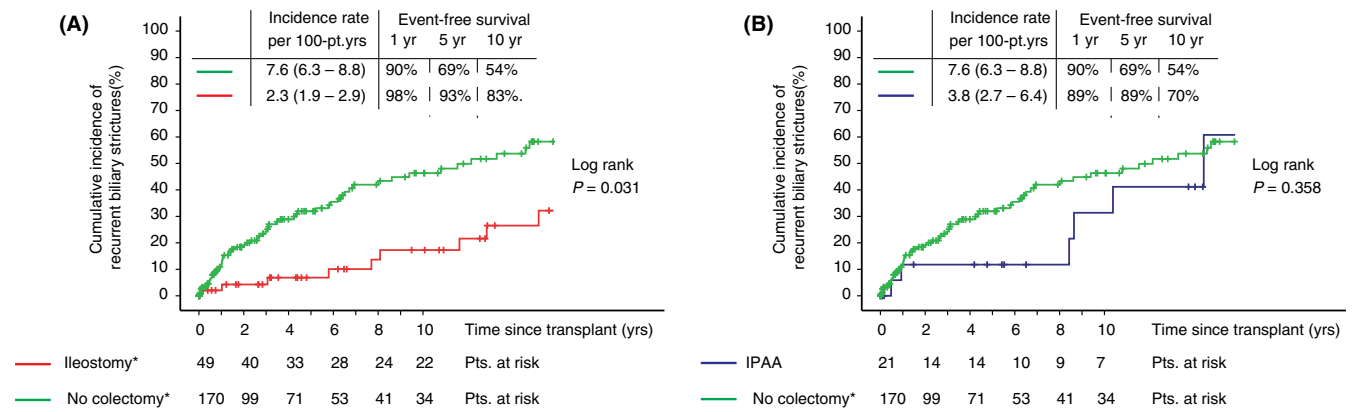


FIGURE 5 Incidence of recurrent biliary strictures post-transplant. The incidence of recurrent biliary strictures that developed in the absence of hepatic artery occlusion is shown for the overall cohort, stratified by colectomy type. Event rates are depicted for the no colectomy vs ileostomy group in (A) and no colectomy vs the IPAA group in (B). Incidence rates presented per 100-patient-years and the respective 95% confidence intervals. Event-free survival rates are calculated using the life-tables method. Time zero is set from the point of liver transplantation. *5/54 patients in the ileostomy group underwent their colectomy following development of a recurrent biliary stricture, and thus re-assigned to the “no colectomy” group for this analysis. IPAA, ileal pouch-anal anastomosis; PSC, primary sclerosing cholangitis; Pt. yrs, patient years; Pts. at risk, patients at risk

precluding multivariable analysis of robust statistical power. Unlike reports from other centres,²¹ our cohort was also devoid of an IRA group. This is because in PSC/UC, IRA is associated with a >6-fold risk of developing rectal cancer compared with IRA in UC alone,²⁸ leading to avoidance in fear of malignant degeneration. A further limitation is that our prospectively captured data records did not include incidence or severity of ischaemia-reperfusion injury (IRI) specifically, a factor which may have reduced graft viability for certain individuals. Nevertheless, when IRI leads to early graft loss, this is as a result of primary graft nonfunction. The latter occurred in a total of 4 patients across our entire study cohort, all within the no colectomy group (vs no patient with an IPAA or ileostomy).

Moreover, the greatest risk of IRI is in the context of organ donation using marginal grafts, mainly livers donated after circulatory death (DCD), whereas all patients within our IPAA group were recipients of organ donation after brain death.

We must also be mindful that our prolonged study period parallels the evolving indications for liver transplantation. For instance, the Model for End-Stage Liver Disease (MELD) score was only developed in the year 2000^{50,51} and not captured for the few within our cohort transplanted prior to January 1994. A similar caution applies to the progressive knowledge that surrounds transplant-related complications. Consequently, we evaluated the incidence of all recurrent/non-anastomotic biliary

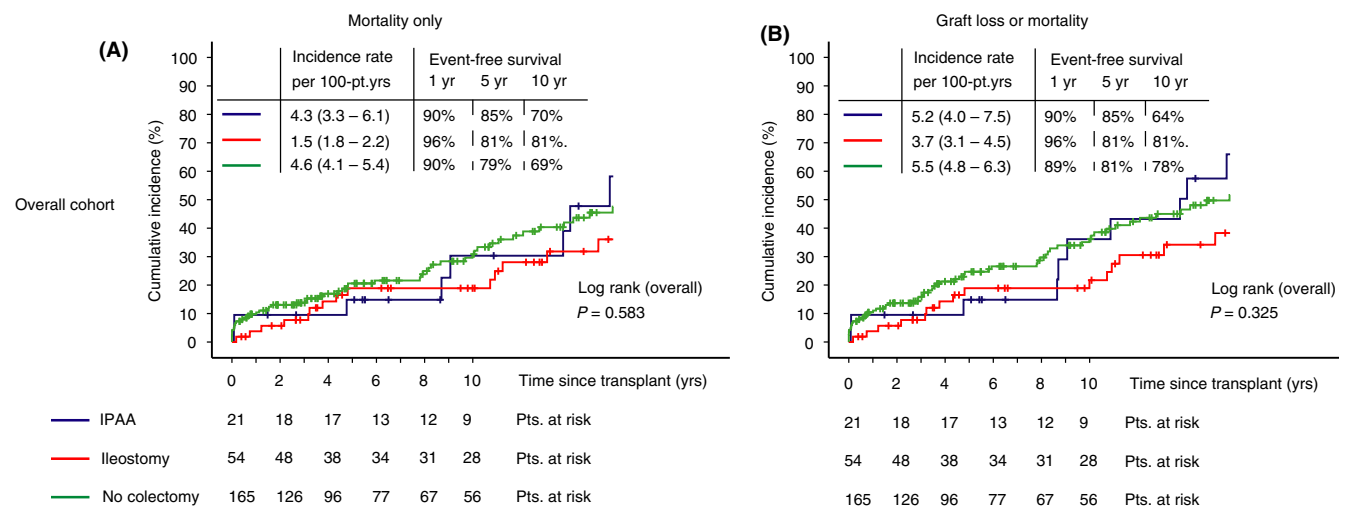


FIGURE 6 Combined patient and graft survival rates. Kaplan-Meier survival estimates of patient mortality (A) and patient mortality/graft loss as a combined endpoint (B) stratified by colectomy type for all transplanted PSC patients with colitis. Incidence rates are presented per 100-patient-years and the respective 95% confidence intervals. Event-free survival rates are calculated using the life-tables method. Time zero is set from the point of liver transplantation. IPAA, ileal pouch-anal anastomosis; PSC, primary sclerosing cholangitis; Pt. yrs., patient years; Pts. at risk, patients at risk

strictures collectively, for attributing more specific labels to lesions that developed in the early 1990s (for instance, differentiating ischaemic-type biliary lesions from recurrent PSC) may neither be correct nor consistent with contemporary definitions and imaging modalities.^{7,13} In any event, the lack of protocol cholangiographic/angiographic surveillance is caveat across most outcome studies in transplantation including our own, and it is conceivable that the subclinical incidence of vascular events and biliary complications is higher than actually reported.

The decision to undergo pouch formation is largely a surgical consideration led by patient choice.⁵² However, given an era of organ shortage in liver transplantation, we advocate that all with PSC who require colorectal resection be counselled about potential risks of poorer pouch function compared with UC alone,²³ and also the relatively increased incidence of graft loss, although we cannot be certain of a definite causal relationship between existing pouch and liver transplant failure at this stage. In light of our study findings, the impact of IPAA, pouch function and pouchitis on clinical events as relate to the native liver in PSC also requires investigation, and represents an area of ongoing research activity. Further prospective and independent validation is of the utmost importance in these areas and ideally should proceed via multi-centre collaborative networks and across a globally representative patient population.³

ACKNOWLEDGEMENTS

We thank Dr. Bettina Hansen (University Health Network, Toronto, Canada) for guidance in creating the time-dependent Cox regression models, and Mrs. Sue Paris for help in maintaining the Birmingham liver transplant database.

Declaration of personal interests: None.

Declaration of funding interests: PJT and GMH receive institutional salary support from the NIHR Birmingham Liver Biomedical Research Centre. This paper presents independent research supported by the Birmingham NIHR Biomedical Research Centre based at the University Hospitals Birmingham NHS Foundation Trust and the University of Birmingham. The views expressed are those of the author(s) and not necessarily those of the NHS, the NIHR or the Department of Health. PJT has received research grant funding from the Wellcome trust, the Core Digestive Diseases Charity, and PSC Support. GMH receives further support from the UK Medical Research Council funded UKPBC stratified medicine platform (www.ukpbc.com), an EU Career Development Award and is also Chief Investigator for UK-PSC (www.ukpsc.com), a NIHR Translational Research Collaboration. The funders had no direct role in the conduct or reporting of this study.

AUTHORSHIP

Guarantor of the article: James Ferguson.

Author contributions: PJT and JF, conception of study idea; PJT, GMH, TI, RC, TP, AS, RWL and PM, study design; PJT, JR, ES, BKG

and SKK, data collection; PJT and BKG, data analysis; PJT, writing of first and subsequent drafts; PJT, JR, RWL, ES, RC, BKG, SKK, TP, FT, PM, AS, GMH, TI and JF, critical input into manuscript structure and approval of final version to submission. All authors have approved the final version of the manuscript.

ORCID

- P. J. Trivedi  <http://orcid.org/0000-0002-4009-8087>
 J. Reece  <http://orcid.org/0000-0002-9719-5080>
 R. W. Laing  <http://orcid.org/0000-0002-8143-4278>
 E. Slaney  <http://orcid.org/0000-0001-7518-1051>
 R. Cooney  <http://orcid.org/0000-0003-3710-157X>
 B. K. Gunson  <http://orcid.org/0000-0001-6149-9915>
 S. K. Kamarajah  <http://orcid.org/0000-0002-2748-0011>
 T. Pinkney  <http://orcid.org/0000-0001-7320-6673>
 F. Thompson  <http://orcid.org/0000-0002-5701-2358>
 P. Muiresan  <http://orcid.org/0000-0002-7389-6691>
 G. M. Hirschfield  <http://orcid.org/0000-0002-6736-2255>
 T. Iqbal  <http://orcid.org/0000-0002-6681-9882>
 J. Ferguson  <http://orcid.org/0000-0002-2529-0409>

LINKED CONTENT

This article is linked to Weinberg and Reddy paper. To view this article visit <https://doi.org/10.1111/apt.14896>.

REFERENCES

- Karlsen TH, Vesterhus M, Boberg KM. Review article: controversies in the management of primary biliary cirrhosis and primary sclerosing cholangitis. *Aliment Pharmacol Ther.* 2014;39:282-301.
- Boonstra K, Beuers U, Ponsioen CY. Epidemiology of primary sclerosing cholangitis and primary biliary cirrhosis: a systematic review. *J Hepatol.* 2012;56:1181-1188.
- Trivedi PJ, Weismüller TJ, Bergquist A, et al. Patient age, sex and inflammatory bowel disease phenotype associate with course of primary sclerosing cholangitis. *Gastroenterology.* 2017;152:1975-1984.e8.
- Boonstra K, Weersma RK, van Erpecum KJ, et al. Population-based epidemiology, malignancy risk, and outcome of primary sclerosing cholangitis. *Hepatology.* 2013;58:2045-2055.
- NHS Blood and Transplant Registry. NHS Blood and Transplant Annual report on liver transplantation 2015/2016. 2016. http://www.odt.nhs.uk/pdf/organ_specific_report_liver_2016.pdf. Accessed July 16, 2015.
- Fosby B, Melum E, Bjørø K, et al. Liver transplantation in the Nordic countries - An intention to treat and post-transplant analysis from The Nordic Liver Transplant Registry 1982-2013. *Scand J Gastroenterol.* 2015;50:797-808.
- Trivedi PJ, Scalera I, Slaney E, et al. Clinical outcomes of donation after circulatory death liver transplantation in primary sclerosing cholangitis. *J Hepatol.* 2017;67:957-965.
- Trivedi PJ, Chapman RW. PSC, AIH and overlap syndrome in inflammatory bowel disease. *Clin Res Hepatol Gastroenterol.* 2012;36:420-436.
- Rudolph G, Gotthardt D, Kloeters-Plachky P, Rost D, Kulaksiz H, Stiehl A. In PSC with dominant bile duct stenosis, IBD is associated

- with an increase of carcinomas and reduced survival. *J Hepatol*. 2010;53:313-317.
10. Nordenvall C, Olén O, Nilsson PJ, et al. Colectomy prior to diagnosis of primary sclerosing cholangitis is associated with improved prognosis in a nationwide cohort study of 2594 PSC-IBD patients. *Aliment Pharmacol Ther*. 2018;47:238-245.
 11. Schuitenmaker J, van der Heide F, Schreuder T, et al. The effect of colectomy on recurrent primary sclerosing cholangitis and need for re-transplantation after orthotopic liver transplantation. *Hepatology*. 2017;66:67A.
 12. Alabraba E, Nightingale P, Gunson B, et al. A re-evaluation of the risk factors for the recurrence of primary sclerosing cholangitis in liver allografts. *Liver Transpl*. 2009;15:330-340.
 13. Hildebrand T, Pannicke N, Dechene A, et al. Biliary strictures and recurrence after liver transplantation for primary sclerosing cholangitis: a retrospective multicenter analysis: Biliary Strictures and PSC Recurrence. *Liver Transpl*. 2016;22:42-52.
 14. Ravikumar R, Tsochatzis E, Jose S, et al. Risk factors for recurrent primary sclerosing cholangitis after liver transplantation. *J Hepatol*. 2015;63:1139-1146.
 15. Montano-Loza AJ, Bhanji RA, Wasilenko S, Mason AL. Systematic review: recurrent autoimmune liver diseases after liver transplantation. *Aliment Pharmacol Ther*. 2017;45:485-500.
 16. Lindström L, Jørgensen KK, Boberg KM, et al. Risk factors and prognosis for recurrent primary sclerosing cholangitis after liver transplantation: a Nordic Multicentre Study. *Scand J Gastroenterol*. 2018;53:1-8.
 17. Dignass A, Eliakim R, Magro F, et al. Second European evidence-based consensus on the diagnosis and management of ulcerative colitis part 1: definitions and diagnosis. *J Crohns Colitis*. 2012;6:965-990.
 18. Camilleri-Brennan J, Munro A, Steele RJC. Does an ileoanal pouch offer a better quality of life than a permanent ileostomy for patients with ulcerative colitis? *J Gastrointest. Surg*. 2003;7:814-819.
 19. Kuruvilla K, Osler T, Hyman NH. A comparison of the quality of life of ulcerative colitis patients after IPAA vs ileostomy. *Dis Colon Rectum*. 2012;55:1131-1137.
 20. Aquina CT, Fleming FJ, Becerra AZ, et al. Who gets a pouch after colectomy in New York state and why? *Surgery*. 2018;163:305-310.
 21. Nordenvall C, Olén O, Johan Nilsson P, et al. Restorative surgery in patients with primary sclerosing cholangitis and ulcerative colitis following a colectomy. *Inflamm Bowel Dis*. 2018;24:624-632.
 22. Block M, Jørgensen KK, Oresland T, et al. Colectomy for patients with ulcerative colitis and primary sclerosing cholangitis - what next? *J Crohns Colitis*. 2014;8:421-430.
 23. Pavlides M, Cleland J, Rahman M, et al. Outcomes after ileal pouch anal anastomosis in patients with primary sclerosing cholangitis. *J Crohns Colitis*. 2014;8:662-670.
 24. Richards DM, Hughes SA, Irving MH, Scott NA. Patient quality of life after successful restorative proctocolectomy is normal. *Colorectal Dis*. 2001;3:223-226.
 25. Cho CS, Dayton MT, Thompson JS, Koltun WA, Heise CP, Harms BA. Proctocolectomy-ileal pouch-anal anastomosis for ulcerative colitis after liver transplantation for primary sclerosing cholangitis: a multi-institutional analysis. *J Gastrointest. Surg*. 2008;12:1221-1226.
 26. Freeman K, Shao Z, Remzi FH, Lopez R, Fazio VW, Shen B. Impact of orthotopic liver transplant for primary sclerosing cholangitis on chronic antibiotic refractory pouchitis. *Clin Gastroenterol Hepatol*. 2008;6:62-68.
 27. Obusez EC, Lian L, Shao Z, et al. Impact of ileal pouch-anal anastomosis on the surgical outcome of orthotopic liver transplantation for primary sclerosing cholangitis. *J Crohns Colitis*. 2013;7:230-238.
 28. Abdalla M, Landerholm K, Andersson P, Andersson RE, Myrelid P. Risk of rectal cancer after colectomy for patients with ulcerative colitis: a National Cohort Study. *Clin Gastroenterol Hepatol*. 2017;15:e2.
 29. Jørgensen KK, Lindström L, Cvancarova M, et al. Colorectal neoplasia in patients with primary sclerosing cholangitis undergoing liver transplantation: a Nordic multicenter study. *Scand J Gastroenterol*. 2012;47:1021-1029.
 30. Laing RW, Scalera I, Isaac J, et al. Liver transplantation using grafts from donors after circulatory death: a propensity-matched study from a single centre. *Am J Transplant*. 2016;16:1795-1804.
 31. Higashi H, Yanaga K, Marsh JW, Tzakis A, Kakizoe S, Starzl TE. Development of colon cancer after liver transplantation for primary sclerosing cholangitis associated with ulcerative colitis. *Hepatology*. 1990;11:477-480.
 32. Lindor KD, Kowdley KV, Harrison ME. ACG clinical guideline: primary sclerosing cholangitis. *Am J Gastroenterol*. 2015;110:646-659.
 33. de Bruijne MH, le Cessie S, Kluin-Nelemans HC, van Houwelingen HC. On the use of Cox regression in the presence of an irregularly observed time-dependent covariate. *Stat Med*. 2001;20:3817-3829.
 34. Achkar J-P, Al-Haddad M, Lashner B, et al. Differentiating risk factors for acute and chronic pouchitis. *Clin Gastroenterol Hepatol*. 2005;3:60-66.
 35. Rowe IA, Webb K, Gunson BK, Mehta N, Haque S, Neuberger J. The impact of disease recurrence on graft survival following liver transplantation: a single centre experience. *Transpl Int*. 2008;21:459-465.
 36. Cholongitas E, Shusang V, Papatheodoridis GV, et al. Risk factors for recurrence of primary sclerosing cholangitis after liver transplantation. *Liver Transpl*. 2008;14:138-143.
 37. Brandsaeter B, Schrumpf E, Bentdal O, et al. Recurrent primary sclerosing cholangitis after liver transplantation: a magnetic resonance cholangiography study with analyses of predictive factors. *Liver Transpl*. 2005;11:1361-1369.
 38. Joshi D, Bjarnason I, Belgaumkar A, et al. The impact of inflammatory bowel disease post-liver transplantation for primary sclerosing cholangitis. *Liver Int*. 2013;33:53-61.
 39. Krugliak Cleveland N, Rubin DT, Hart J, et al. Patients with ulcerative colitis and primary sclerosing cholangitis frequently have sub-clinical inflammation in the proximal colon. *Clin Gastroenterol Hepatol*. 2018;16:68-74.
 40. Ricciuto A, Fish J, Carman N, et al. Symptoms do not correlate with findings from colonoscopy in children with inflammatory bowel disease and primary sclerosing cholangitis. *Clin Gastroenterol Hepatol*. 2018; <https://doi.org/10.1016/j.cgh.2018.01.020>
 41. Shen B. Acute and chronic pouchitis—pathogenesis, diagnosis and treatment. *Nat Rev Gastroenterol Hepatol*. 2012;9:323-333.
 42. Yoshida H, Granger DN. Inflammatory bowel disease: a paradigm for the link between coagulation and inflammation. *Inflamm Bowel Dis*. 2009;15:1245-1255.
 43. Torres J, Bao X, Goel A, et al. The features of mucosa-associated microbiota in primary sclerosing cholangitis. *Aliment Pharmacol Ther*. 2016;43:790-801.
 44. Doycheva I, Leise MD, Watt KD. The intestinal microbiome and the liver transplant recipient: what we know and what we need to know [Review]. *Transplantation*. 2016;100:61-68.
 45. Zahr Eldeen F, Roll GR, Derosas C, et al. Preoperative thromboelastography as a sensitive tool predicting those at risk of developing early hepatic artery thrombosis after adult liver transplantation. *Transplantation*. 2016;100:2382-2390.
 46. Mathis KL, Dozois EJ, Larson DW, et al. Ileal pouch-anal anastomosis and liver transplantation for ulcerative colitis complicated by primary sclerosing cholangitis. *Br J Surg*. 2008;95:882-886.
 47. Christensen B, Micic D, Gibson PR, et al. Vedolizumab in patients with concurrent primary sclerosing cholangitis and inflammatory bowel disease does not improve liver biochemistry but is safe and

- effective for the bowel disease. *Aliment Pharmacol Ther.* 2018;47:753-762.
48. Coletta M, Paroni M, Caprioli F. Successful treatment with vedolizumab in a patient with chronic refractory pouchitis and primary sclerosing cholangitis. *J Crohns Colitis.* 2017;11:1507-1508.
49. Trivedi PJ, Adams DH. Mucosal immunity in liver autoimmunity: a comprehensive review. *J Autoimmun.* 2013;46:97-111.
50. Kamath PS, Wiesner RH, Malinchoc M, et al. A model to predict survival in patients with end-stage liver disease. *Hepatology.* 2001;33:464-470.
51. Malinchoc M, Kamath PS, Gordon FD, Peine CJ, Rank J, ter Borg PCJ. A model to predict poor survival in patients undergoing transjugular intrahepatic portosystemic shunts. *Hepatology.* 2000;31:864-871.
52. Byrne CM, Tan K-K, Young JM, Selby W, Solomon MJ. Patient and clinician preferences for surgical and medical treatment options in ulcerative colitis. *Colorectal Dis.* 2014;16:285-292.

SUPPORTING INFORMATION

Additional supporting information will be found online in the Supporting Information section at the end of the article.

How to cite this article: Trivedi PJ, Reece J, Laing RW, et al. The impact of ileal pouch-anal anastomosis on graft survival following liver transplantation for primary sclerosing cholangitis. *Aliment Pharmacol Ther.* 2018;48:322-332. <https://doi.org/10.1111/apt.14828>