



UNIVERSITÀ  
DEGLI STUDI  
FIRENZE

FLORE

## Repository istituzionale dell'Università degli Studi di Firenze

### **WHO/EORTC classification of cutaneous lymphomas 2005: histological and molecular aspects**

Questa è la Versione finale referata (Post print/Accepted manuscript) della seguente pubblicazione:

*Original Citation:*

WHO/EORTC classification of cutaneous lymphomas 2005: histological and molecular aspects / G. Burg; W. Kempf; A. Cozzio; J. Feit; R. Willemze; E. Jaffe; R. Dummer; E. Berti; L. Cerroni; S. Chimenti; J.L. Diaz-Perez; F. Grange; N.L. Harris; D.V. Kazakov; H. Kerl; M. Kurrer; R. Knobler; C.J.L. Meijer; N. Pimpinelli; E. Ralfkiaer; R. Russell-Jones; C. Sander; M. Santucci; W. Sterry; S.H. Swerdlow; M.H. Vermeer; J. Wechsler; S. Whittaker.. - In: JOURNAL OF CUTANEOUS PATHOLOGY. - ISSN 0303-6987. - STAMPA. - 32:(2005), pp. 647-

*Availability:*

This version is available at: 2158/312727 since:

*Terms of use:*

Open Access

La pubblicazione è resa disponibile sotto le norme e i termini della licenza di deposito, secondo quanto stabilito dalla Policy per l'accesso aperto dell'Università degli Studi di Firenze (<https://www.sba.unifi.it/upload/policy-oa-2016-1.pdf>)

*Publisher copyright claim:*

(Article begins on next page)

# WHO/EORTC classification of cutaneous lymphomas 2005: histological and molecular aspects

**Abstract:** The new WHO/EORTC classification for cutaneous lymphomas comprises mature T-cell and natural killer (NK)-cell neoplasms, mature B-cell neoplasms, and immature hematopoietic malignancies. It reflects the unique features of lymphoproliferative diseases of the skin, and at the same time it is as compatible as possible with the concepts underlying the WHO classification for nodal lymphomas and the EORTC classification of cutaneous lymphomas. This article reviews the histological, phenotypical, and molecular genetic features of the various nosological entities included in this new classification. These findings always have to be interpreted in the context of the clinical features and biologic behavior.

**Aim:** To review the histological, phenotypical and molecular genetic features of the various nosological entities of the new WHO/EORTC classification for cutaneous lymphomas.

**Methods:** Extensive review of the literature cited in Medline and own data of the authors.

**Results:** The WHO/EORTC classification of cutaneous lymphomas comprises mature T-cell and NK-cell neoplasms, mature B-cell neoplasms and immature hematopoietic malignancies. It reflects the unique features of primary cutaneous lymphoproliferative diseases.

**Conclusion:** This classification is as much as possible compatible with the concept of the WHO classification for nodal lymphomas and the EORTC classification of cutaneous lymphomas. The histological, phenotypical and molecular genetic features always have to be interpreted in the context of the clinical features and biologic behavior.

Burg G, Kempf W, Cozzio A, Feit J, Willemze R, Jaffe ES, Dummer R, Berti E, Cerroni L, Chimenti S, Diaz-Perez JL, Grange F, Harris NL, Kazakov DV, Kerl H, Kurrer M, Knobler R, Meijer CJLM, Pimpinelli N, Ralfkiaer E, Russell-Jones R, Sander C, Santucci M, Sterry W, Swerdlow SH, Vermeer MH, Wechsler J, Whittaker S. WHO/EORTC classification of cutaneous lymphomas 2005: histological and molecular aspects.

J Cutan Pathol 2005; 32: 647–674. © Blackwell Munksgaard 2005.

**Günter Burg<sup>1</sup>, Werner Kempf<sup>1,2</sup>, Antonio Cozzio<sup>1</sup>, Josef Feit<sup>1,3</sup>, Rein Willemze<sup>4</sup>, Elaine S. Jaffe<sup>5</sup>, Reinhard Dummer<sup>1</sup>, Emilio Berti<sup>6</sup>, Lorenzo Cerroni<sup>7</sup>, Sergio Chimenti<sup>8</sup>, José L. Diaz-Perez<sup>9</sup>, Florent Grange<sup>10</sup>, Nancy L. Harris<sup>11</sup>, Dmitry V. Kazakov<sup>12</sup>, Helmut Kerl<sup>7</sup>, Michael Kurrer<sup>13</sup>, Robert Knobler<sup>14</sup>, Chris J.L.M. Meijer<sup>15</sup>, Nicola Pimpinelli<sup>16</sup>, Elisabeth Ralfkiaer<sup>17</sup>, Robin Russell-Jones<sup>18</sup>, Christian Sander<sup>19</sup>, Marco Santucci<sup>20</sup>, Wolfram Sterry<sup>21</sup>, Steven H. Swerdlow<sup>22</sup>, Maarten H. Vermeer<sup>4</sup>, Janine Wechsler<sup>23</sup> and Sean Whittaker<sup>18</sup>**

<sup>1</sup>Department of Dermatology, University Hospital Zurich,

<sup>2</sup>Kempf und Pfaltz, Histologische Diagnostik, Zürich, Switzerland,

<sup>3</sup>Department of Pathology, University Hospital Brno, Brno, Czech Republic,

<sup>4</sup>Department of Dermatology, The Netherlands Laboratory of Pathology, Leiden University Medical Center, Leiden, The Netherlands,

<sup>5</sup>National Cancer Institute, National Institutes of Health, Bethesda, MD, USA,

<sup>6</sup>Department of Dermatology, University of Milan, Milan, Italy,

<sup>7</sup>Department of Dermatology, University of Graz, Graz, Austria,

<sup>8</sup>Department of Dermatology, University of Rome, Rome, Italy,

<sup>9</sup>Department of Dermatology, Cruces Hospital, Bilbao, Spain,

<sup>10</sup>Department of Dermatology, University of Reims, Reims, France,

<sup>11</sup>Department of Pathology, Massachusetts General Hospital, Boston, MA, USA,

<sup>12</sup>Sikl's Department of Pathology, Charles University, Medical Faculty Hospital, Pilsen, Czech Republic,

<sup>13</sup>Department of Pathology, University Hospital Zurich, Zurich, Switzerland,

<sup>14</sup>Department of Dermatology, University of Vienna, Vienna, Austria,

<sup>15</sup>Department of Pathology, Vrije Universiteit Medical Center, Amsterdam, The Netherlands,

<sup>16</sup>Department of Dermatological Sciences, University of Florence, Florence, Italy,

<sup>17</sup>Department of Pathology, University of Copenhagen, Copenhagen, Denmark,

<sup>18</sup>Skin Tumour Unit, St John's Institute of Dermatology, St Thomas' Hospital, London, UK,

<sup>19</sup>Department of Dermatology, Allgemeines Krankenhaus St Georg, Hamburg, Germany,

<sup>20</sup>Department of Human Pathology and Oncology, University of Florence, Florence, Italy,

<sup>21</sup>Department of Dermatology, Charité, Humboldt University, Berlin, Germany,

<sup>22</sup>Department of Pathology, Division of Hematopathology, University of Pittsburgh School of Medicine, Pittsburgh, PA, USA, and

<sup>23</sup>Department of Pathology, Hôpital Henri Mondor, Creteil, France

Günter Burg, MD, Professor and Chairman, Department of Dermatology, University Hospital Zurich, Gloriastrasse 31, CH-8091 Zurich, Switzerland

Tel: +41 1 2552550

Fax: +41 1 2554403

e-mail: g.burg@usz.ch

Accepted for publication September 13, 2005

Over the past 50 years, the classification of lymphomas has been a source of controversy, both for those studying primarily nodal disease and those interested in cutaneous lymphomas, as well as an area of interdisciplinary disagreement. There never will be a classification for lymphomas that can cover the broad spectrum of nodal and extranodal lymphomas at the same time and fully reflect the many organ-specific biological peculiarities. Nevertheless, one basic terminology should be used for both nodal and extranodal lymphomas.

During two consensus meetings in Lyon, France in September 2003 and in Zürich, Switzerland in January 2004 and in many additional discussions, a group of pathologists and dermatologists elaborated the WHO/EORTC classification for primary lymphoproliferative disorders (LPD) of the skin<sup>1-4</sup> which reflects the specific features of cutaneous lymphomas. The WHO/EORTC classification has been developed on the base of the EORTC classification for cutaneous lymphomas<sup>5</sup> and the WHO classification for nodal lymphomas<sup>6</sup> and respects the framework of the basic WHO classification for nodal lymphomas.<sup>7</sup>

The clinical aspects of the new classification recently have been reviewed.<sup>2</sup> This article focuses on the histological and molecular findings in the various disease entities with special reference to the differences between nodal and cutaneous lymphomas.

## WHO/EORTC classification for cutaneous lymphomas

The distinct histological, phenotypic, and molecular biological features of the entities listed in the new WHO/EORTC classification for cutaneous lymphomas (Table 1)<sup>1,2,4</sup> are presented.

### Cutaneous T-cell lymphomas

#### *Mycosis fungoides (MF)*

Mycosis fungoides (MF), the prototype of cutaneous T-cell lymphomas (CTCL), accounts for approximately 44% CL.<sup>2</sup> MF initially presents in the skin and shows a characteristic stepwise clinical progression with potential extracutaneous involvement.

#### *Synonyms in other classifications*

WHO/EORTC classification (2005): mycosis fungoides

WHO classification (2001): mycosis fungoides

REAL classification (1997): mycosis fungoides

EORTC classification (1997): mycosis fungoides

#### *Clinical features*

The disease starts with patches, which after years or even decades develop into thin and thick plaques. In a minority of patients, the disease results eventually in tumors and in dissemination to lymph nodes, blood,

Table 1. The WHO/EORTC classification for cutaneous lymphomas<sup>1-3</sup>**Mature T-cell and NK-cell neoplasms***Mycosis fungoides* (MF)

Variants of MF

Pagetoid reticulosis (localized disease)

Folliculotropic, syringotropic, granulomatous variants

Subtype of MF

Granulomatous slack skin

*Sézary syndrome*CD30<sup>+</sup> T-cell lymphoproliferative disorders of the skin

Lymphomatoid papulosis

Primary cutaneous anaplastic large cell lymphoma

*Subcutaneous panniculitis-like T-cell lymphoma*<sup>\*</sup>*Primary cutaneous peripheral T-Cell lymphoma (PTL), unspecified*

Subtypes of PTL

Primary cutaneous aggressive epidermotropic CD8<sup>+</sup> T-cell lymphoma (provisional)

Cutaneous gamma/delta-positive T-cell lymphoma (provisional)

Primary cutaneous CD4<sup>+</sup> small/medium-sized pleomorphic T-cell lymphoma (provisional)*Extranodal NK/T-cell lymphoma, nasal type*<sup>†</sup>

Hydroa vacciniforme-like lymphoma (variant)

*Adult T-cell leukemia/lymphoma*<sup>†</sup>*Angioimmunoblastic T-cell lymphoma*<sup>†</sup>**Mature B-cell neoplasms***Cutaneous marginal zone B-cell lymphoma (MALT-type)**Primary cutaneous follicle center lymphoma*

Growth patterns

Follicular

Follicular and diffuse

Diffuse

*Cutaneous diffuse large B-cell lymphoma, leg type**Cutaneous diffuse large B-cell lymphoma, others**Intravascular large B-cell lymphoma*<sup>†</sup>*Lymphomatoid granulomatosis*<sup>†</sup>*Chronic lymphocytic leukemia*<sup>†</sup>*Mantle cell lymphoma*<sup>†</sup>*Burkitt lymphoma*<sup>†</sup>**Immature hematopoietic malignancies***Blastic NK-cell lymphoma*<sup>‡</sup> CD4<sup>+</sup>/CD56<sup>+</sup> hematodermic neoplasm*Precursor lymphoblastic leukemia/lymphoma*<sup>†</sup>T-lymphoblastic lymphoma<sup>†</sup>B-lymphoblastic lymphoma<sup>†</sup>*Myeloid and monocytic leukemias*<sup>†</sup>**Hodgkin lymphoma**<sup>\*</sup>Definition is restricted to lymphomas of alpha/beta T-cell origin.<sup>†</sup>This table also contains entities of extracutaneous lymphomas frequently involving the skin as a secondary site.<sup>‡</sup>Recent evidence suggests an origin from a dendritic cell precursor. In recognition of uncertain histogenesis the term CD4<sup>+</sup>/CD56<sup>+</sup> hematodermic neoplasm is preferred.

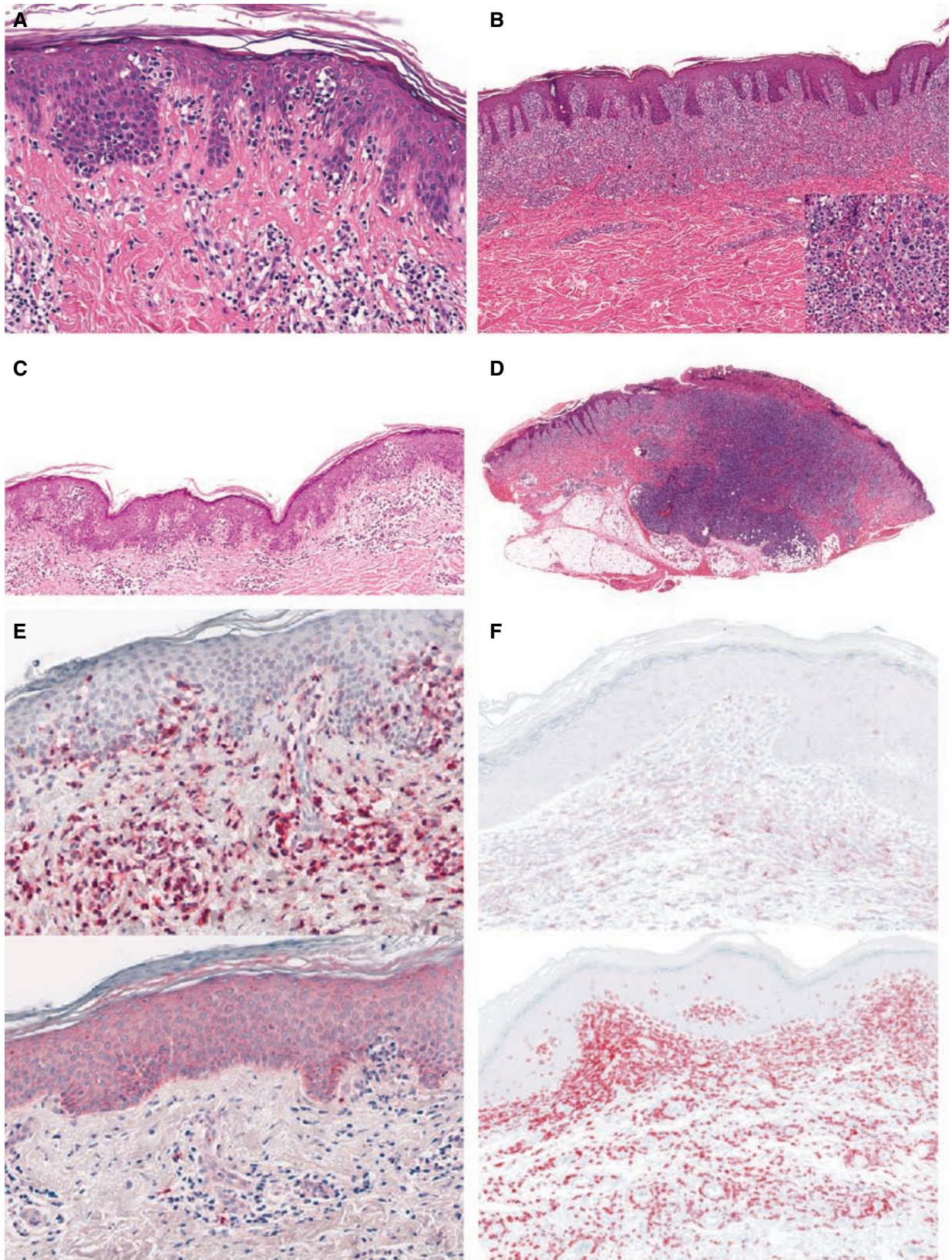
bone marrow, and internal organs. Involvement of mucous membranes is an exception. The disease does not develop continuously, but instead shows a step-wise progression, suggesting that the steps reflect cumulative mutations in various genes involved in the pathogenesis of the neoplastic process.<sup>8,9</sup>

*Histology*

The histologic diagnosis of early MF usually is difficult to establish, as the disease may closely resemble dermatitis in its early stages.<sup>10</sup> The most specific finding, seen in only 10% of lesions, are Pautrier microabscesses (Fig. 1A). The presence of medium-to-large

hyper-convoluted cerebriform cells in the epidermis larger than dermal lymphocytes, showing a clear perinuclear halo (haloed lymphocytes), or lymphocytes in clusters in the dermis, and lymphocytes aligned within the basal layer are typical but not specific features.<sup>11</sup> In early MF, presence of lymphocytes with strikingly irregular nuclear contour and/or variable nuclear and cytoplasmic features is of diagnostic value with a sensitivity of 53.3% and a specificity of 88.9%<sup>12</sup>. There usually is little spongiosis. A study analyzing 745 biopsy specimens of early MF<sup>13</sup> demonstrated that epidermotropism of lymphocytes was almost always present, but missing in 4% of cases. The combination of a patchy band-like infiltrate and elongated,





*Fig. 1.* A) Patch stage of mycosis fungoides (MF): epidermotropic lymphocytic infiltrate forming Pautrier microabscesses; intraepidermal atypia of the intraepidermal lymphocytes. B) Early stage of MF: superficial perivascular lymphocytic infiltrate with epidermotropism along the basal layer (lining up) and in upper levels of the epidermis. C) Plaque stage of MF: dense band-like lymphoid infiltrate with epidermotropism. Inset: dense infiltrate of atypical lymphocytes. D) MF in transformation: dense lymphocytic infiltrate reaching deep into the subcutaneous fat and ulceration. E) Plaque stage of MF: predominance of CD4 (top) over CD8 cells (bottom). F) CD8<sup>+</sup> MF: The cells are CD4<sup>-</sup> (top) and CD8<sup>+</sup> (bottom).

rounded rete ridges, known as a psoriasiform lichenoid pattern is particularly common. A pattern resembling interface dermatitis is present in more than half of the biopsies.<sup>13</sup> Early patches of MF usually lack eosinophils or plasma cells.

The final diagnosis is based on a combination of specific histologic parameters without the necessity of confirmatory immunophenotyping in the vast majority of cases.<sup>10,11</sup> Both interobserver and intraobserver variability is generally high.<sup>14</sup>

In the thin plaque stage, the histological findings are more often fully diagnostic (Fig. 1B). There is a dense infiltrate with lymphocytes lining up in the basal layer, especially at the tips of the rete ridges with epidermotropism of single cells. The majority of cells are small, differentiated lymphocytes with round or only slightly cerebriform nuclei. Haloed cells may predominate in the epidermis. There may be mild acanthosis, hyperkeratosis, edema or fibrosis of the papillary dermis. There is proliferation of postcapillary venules with prominent endothelial cells, simulating histiocytic giant cells. The infiltrate may contain an admixture of eosinophils, plasma cells, macrophages, and dermal dendritic cells.<sup>15,16</sup>

The thick plaque stage (Fig. 1C) is typified by a dense, subepidermal, usually band-like infiltrate containing a high number of cells with cerebriform nuclei. Epidermotropism is more prominent with small intraepidermal clusters (two to three cells) of lymphocytes. Typical Pautrier microabscesses are seen only in approximately 10% of cases. Subcorneal bullous formation may result from confluence of Pautrier microabscesses.<sup>17</sup>

With progression from plaque stage to tumor stage (Fig. 1D), the dermal infiltrates become more diffuse, and epidermotropism may disappear. The proportions of tumor cells increase both in number and size, and may include cells with small, medium-sized and large cerebriform nuclei, and blast cells with prominent nuclei and intermediate forms. There is a concomitant decrease in the numbers of reactive T cells and dendritic cells. Eosinophils and plasma cells usually are present.

#### *Immunophenotype*

The immunophenotypical prototype of MF is a CD2<sup>+</sup>, CD3<sup>+</sup>, CD4<sup>+</sup>, CD5<sup>+</sup>, CD45RO<sup>+</sup>, CD8<sup>-</sup>, TCRbeta<sup>+</sup>, and CD30<sup>-</sup> phenotype (Fig. 1E) CD4<sup>-</sup>. A CD8<sup>+</sup> phenotype has been described (Fig. 1F), which otherwise seems to be similar to MF. During progression of the disease loss of CD7, CD2 and CD5 may be seen especially in the epidermotropic cerebriform cells. When large blast stage occur in tumors (large-cell transformation), CD4<sup>+</sup> epidermotropic cells can express a cytotoxic

phenotype (TIA-1 and granzyme B) and CD30. Rare cases of CD56<sup>+</sup> MF have also been observed.<sup>18</sup>

#### *Molecular findings and genetics*

Monoclonal rearrangement of T-cell receptor gamma genes is a common finding in plaque and tumor stage of MF but is found in only half of the cases of early MF.

There are only very few data on chromosome aberrations in primary CTCL. Molecular cytogenetic analysis of CTCL using comparative genomic hybridization (CGH) analysis has identified common genetic alterations in SS and MF.<sup>19</sup> The most frequent losses involve chromosomes 1p, 17p, 10q/10 and 19. Commonly detected chromosomal gains involve 4/4q, 18 and 17q/17. A similar pattern of chromosomal instability is seen in both MF and SS.<sup>19</sup> Numerical aberrations of chromosomes 6, 13, 15, and 17, marker chromosomes, and structural aberrations of chromosomes 3, 9, and 13 were increased in MF compared with healthy controls.<sup>20</sup>

Detailed molecular expression analysis of cutaneous T-cell lymphoma is not available. Some oncogenic alterations have been demonstrated, such as functional inactivation of the Fas receptor,<sup>21</sup> constitutive activity of STAT3,<sup>22</sup> or the inactivation of the p16<sup>INK4a</sup> gene via deletion or promoter hypermethylation.<sup>23,24</sup>

On the other hand, inactivation of several tumor suppressor genes in CTCL, such as SHP-1,<sup>25</sup> p15, p16,<sup>26</sup> and hMLH1<sup>27</sup> has been reported. Protein expression and phosphorylation assays revealed that lack of SHP-1 expression, an important negative regulator involved in signaling through receptors for cytokine/growth factors such as *c-kit* ligand, interleukin (IL)-3, IL-2, IL-4, and IL-13 and others, is frequent in malignant T cells and results from methylation of the SHP-1 gene promoter. The persistence of signals generated by IL-2R and possibly other receptor complexes may be important in the pathogenesis of T-cell lymphomas.<sup>25</sup> Whittaker and colleagues showed aberrant p15 protein expression in 85% of patients analyzed with p15 gene abnormalities and abnormal p16 expression in 59% with p16 gene abnormalities. These abnormalities were not dependent on cutaneous stage of disease, leading to the suggestion that abnormalities of the p15 and p16 genes may be common in both early and advanced stages of MF and SS and that these genes may be inactivated by allelic loss and aberrant promoter methylation.<sup>26</sup> Microsatellite instability (MSI) was found to be more prevalent in tumor stage MF than early-stage disease and was associated with an older age of onset of MF.<sup>27</sup> In more than half of the patients with MSI, abnormal hMLH1 protein expression could be detected, and



it has been argued that the development of a mutator phenotype may contribute to disease progression in MF. Recently, a genome-wide scale differential methylation hybridization analysis, comparing aggressive CTCL entities such as transformed MF and CD30<sup>-</sup> large T-cell lymphoma with indolent entities (CD30<sup>+</sup> large T-cell lymphoma) revealed a relative hypermethylated state of putative tumor suppressor genes such as *asbcl7a*, *PTPRG*, and *thrombospondin*.<sup>28</sup> The hypermethylated state of several tumor suppressor genes involved in DNA repair, cell cycle, or apoptosis, lead to inactivation of these genes, thus promoting leukemogenesis of CTCL. Whether these events are causative or an epiphenomenon remains to be elucidated. Tumor suppressor gene hypermethylation may render these tumors amenable to therapeutic interventions with demethylation agents.

A study employing microsatellite analysis of microdissected tumor tissue suggested that CTCL may evolve by multilineage progression and that tumor subclones in MF can be detected in early disease stages.<sup>29</sup>

#### *Variants and subtypes*

Apart from the classical form of MF, there are several variants and subtypes of this disease including folliculotropic MF, pagetoid reticulosis and granulomatous slack skin. Apart from those listed

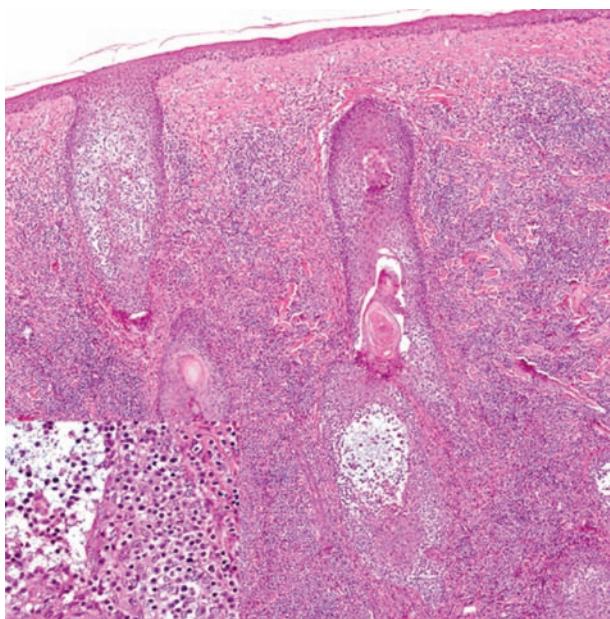


Fig. 2. Follicular mycosis fungoides (MF): deep dense lymphocytic infiltrate with folliculotropism but low epidermotropism. Follicular epithelium shows mucinous degeneration forming mucin lakes. Inset: detailed view of atypical lymphocytes infiltrating the follicular epithelium.

in the WHO/EORTC classification, there are bul-  
lous, granulomatous, hypo- or hyperpigmented,  
hyperkeratotic and other forms of MF.<sup>30,31</sup>

Folliculotropic MF (pilotropic MF, folliculocentric MF) with or without follicular mucinosis shows a predilection for hair follicles. Clinically, the disease manifests itself as erythematous patches or plaques with follicular hyperkeratosis producing comedo-like plugs and often hair loss. The face and upper trunk are the sites of predilection. Pseudotumorous forms dominated by follicular epithelial hyperplasia rather than lymphocytic proliferation have been reported.<sup>32</sup>

Histologically, there is a dense lymphocytic infiltrate of small to medium-sized cells with irregular nuclei, surrounding and infiltrating the hair follicles and sparing interfollicular areas (Fig. 2). Often, nuclear atypia of lymphocytes is not prominent.<sup>33</sup> The follicles may show cystic dilatation, cornified plugging and in some cases mucin deposition. Since some patients experience an aggressive clinical course with large-cell transformation and lymph node involvement, folliculotropic MF carries a worse prognosis than classic MF.<sup>34-36</sup> Changes in intercellular adhesion receptors may account for the phenomenon of folliculotropism in follicular MF.

Pagetoid reticulosis (PR) is a low-grade malignant variant of MF with characteristic histologic features, but various phenotypes. Originally two forms of PR were described, namely disseminated by Ketrion and Goodman<sup>37</sup> and unilesional PR in 1931 by Woringer and Kolopp.<sup>38</sup> The term 'pagetoid reticulosis' was proposed by Braun-Falco and colleagues because of the clinical and the histological appearance.<sup>39</sup> Clinically, the differential diagnosis of the unilesional form includes solitary lesions of psoriasis, Bowen disease, extramammary Paget disease, or circumscribed forms of chronic dermatitis. Histologically, the acanthotic epidermis shows sponge-like disaggregation by medium-to-large-sized atypical lymphoid cells with vacuolated, abundant cytoplasm, singly or arranged in clusters<sup>40</sup> (Fig. 3A,B). Superficial spreading type of malignant melanoma and Paget disease may mimic PR but can readily be distinguished by cytomorphologic and immunophenotypic features (S-100; CEA; EMA).<sup>41,42</sup> Most cases of PR express a T-helper phenotype: CD3<sup>+</sup>, CD4<sup>+</sup>, CD5<sup>+</sup> and CD8<sup>-</sup>.<sup>43</sup> There are reports on CD8<sup>+</sup> cases<sup>44,45</sup> or PR expressing a gamma/delta phenotype<sup>46</sup> which should be classified among the gamma/delta T-CL. The pronounced epidermotropism of neoplastic cells in PR may be due to their strong expression of receptors (CLA and alpha E beta 7), seen also in non-neoplastic conditions, interacting with endothelial cells and keratinocytes, respectively.<sup>47</sup>

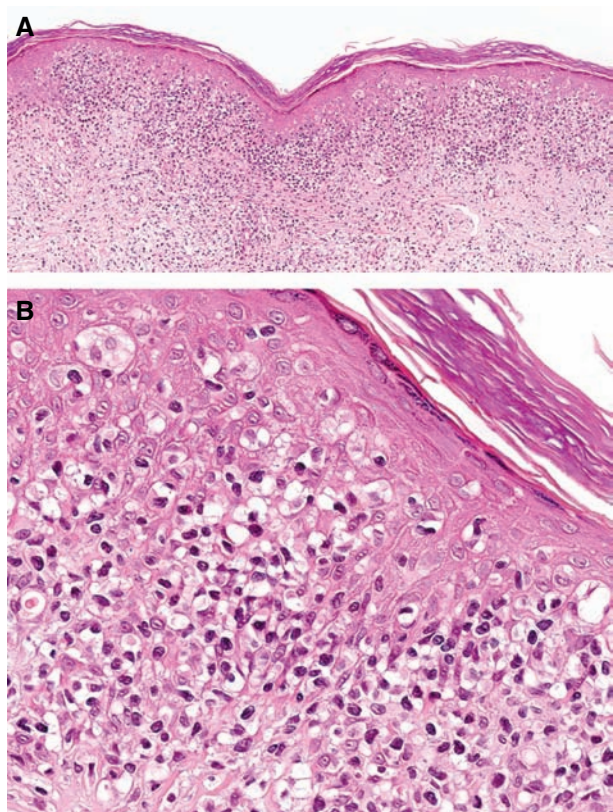


Fig. 3. A) Pagetoid reticulosis: mostly superficial lymphocytic infiltrate showing prominent epidermotropism with spongiform disintegration of the epidermis. B) Pagetoid reticulosis: prominent epidermotropism of lymphocytes with nuclear atypia and clear cytoplasm (halo cells).

*Granulomatous slack skin (GSS)*

Granulomatous slack skin (GSS) is a rare form of CTCL, nosologically related to MF and is therefore referred to as subtype of MF in the WHO/EORTC classification, clinically characterized by the development of bulky skin lesions in the major skin folds. The differentiation between variant and subtype of an entity is somehow arbitrary but is helpful in pointing to minor (variants) and major (subtype) differences from the prototype CTCL (MF). This nomenclature is also used for extracutaneous tumors of the hematopoietic and lymphoid tissues.<sup>6</sup>

*Synonyms in other classifications*

- WHO/EORTC classification (2005): subtype of mycosis fungoides
- WHO classification (2001): not listed
- REAL classification (1997): not listed
- EORTC classification (1997): granulomatous slack skin

*Histology*

Early lesions of GSS display a band-like infiltrate of small lymphocytes without significant nuclear atypia.<sup>48</sup> More advanced lesions show a dense lymphocytic infiltrate throughout the entire dermis, but unlike tumors of MF, the lymphocytes are usually small. The diagnostic hallmark is numerous multinucleated histiocytic giant cells, which are scattered throughout the background of the dense lymphocytic infiltrate. These giant cells contain 20–30 nuclei mostly located at the periphery of the cytoplasm (Fig. 4), Elastophagocytosis and emperipolesis, i.e. phagocytosis of lymphoid cells by multinucleated giant cells, are present. Elastic stains demonstrate the loss of elastic fibers at the sites of the infiltrates in all dermal layers. Ultrastructurally, the lymphocytes show hyperchromatic cerebriform nuclei similar to those seen in MF and SS.<sup>49</sup>

*Immunophenotype*

The lymphoid tumor cells display a T-helper phenotype with the expression of CD4, CD45RO. There may be loss of other T-cell markers such as CD3, CD5, or CD7. In rare cases, the tumor cells express CD30.<sup>50</sup> The giant cells are of histiocytic origin and thus are positive for histiocytic markers such as CD68 and Mac387.

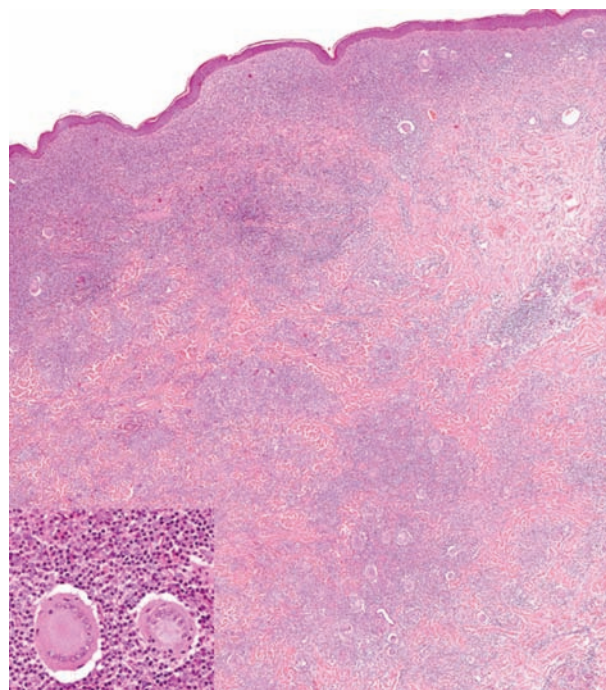


Fig. 4. Granulomatous slack skin: dense superficial and deep lymphocytic infiltrate with numerous scattered large, histiocytic multinucleated giant cells (detail in the inset).



*Molecular findings and genetics*

Clonal rearrangement of TCR genes can be found in most cases and is a useful diagnostic tool in early stages of the disease.<sup>51</sup> Trisomy 8 has been reported in two cases.<sup>52–54</sup>

No molecular expression analysis has been reported, probably because of the rarity of the disease.

*Sézary syndrome (SS)*

This leukemic form of CTCL is defined by erythroderma, lymphadenopathy, and presence of neoplastic T-cells (Sézary cells) in skin, lymph nodes, and peripheral blood with an absolute Sézary cell count of at least 1000 cells/mm<sup>3</sup>. Clinically edema, hyperkeratosis of palms and soles, and therapy-resistant pruritus are typically present. Recently, the following criteria for the diagnosis of SS were recommended by the International Society for Cutaneous Lymphoma (ISCL): an absolute Sézary cell count of at least 1000 cells/mm<sup>3</sup>; demonstration of immunophenotypical abnormalities (expanded CD4<sup>+</sup> T-cell population resulting in a CD4/CD8 ratio more than 10 and loss of any or all of the T-cell antigens CD2, CD3, CD4, and CD5, or both); or the demonstration of a T-cell clone in the peripheral blood by molecular or cytogenetic studies.<sup>55</sup>

*Synonyms in other classifications*

WHO/EORTC classification (2005): Sézary syndrome

WHO classification (2001): Sézary syndrome

REAL classification (1997): Sézary syndrome

EORTC classification (1997): Sézary syndrome

*Histology*

The histological spectrum of SS is similar to that of MF although there are minor differences.<sup>56,57</sup> Although Pautrier microabscesses and acanthosis are more frequently present in SS than in MF, however, recent studies suggest that histological features do not reliably allow differentiation between the two disorders.<sup>56,58</sup>

The most prevalent finding in skin biopsies from SS patients is a subepidermal perivascular or band-like monotonous infiltrate composed of predominantly small lymphocytes with or without nuclear atypia (Fig. 5A).<sup>15,59</sup> A few eosinophils and plasma cells may be admixed. The epidermis often shows psoriasiform acanthosis. Epidermotropism and lining up of lymphocytes with cerebriform nuclei (MF-like pattern) is found in approximately 20–40%, half of which exhibit Pautrier microabscesses<sup>59,60</sup> which are a specific, but not a regular finding in epidermotropic CTCL such as MF and SS<sup>57</sup> (Fig. 5B). Edema is often present in initial stages of epidermotropic

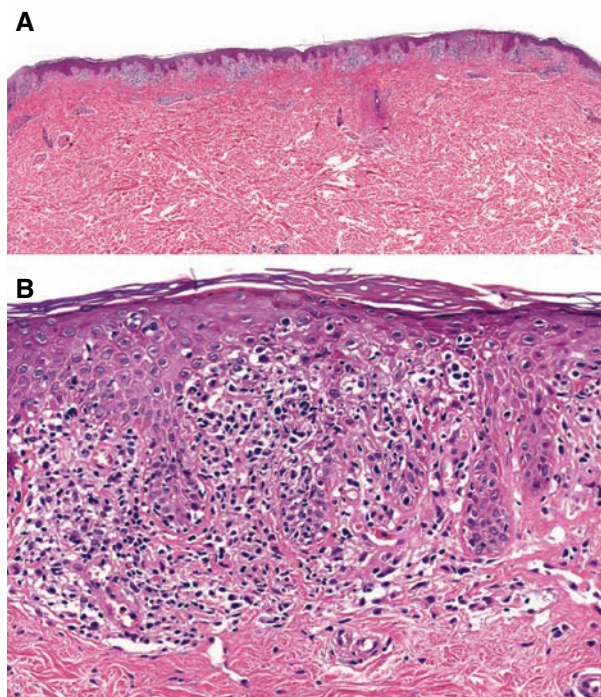


Fig. 5. A) Sézary syndrome: slight acanthosis and superficial, perivascular lymphocytic infiltrate with epidermotropism. B) Sézary syndrome: detail epidermotropism of lymphocytes with formation of Pautrier's microabscesses.

CTCL but may be replaced over time by fibrosis of papillary dermis. Occasionally, granulomatous features can be seen in SS lesions.<sup>59,61</sup> Both intraobserver and interobserver variability is high in the diagnosis of SS.<sup>62</sup> Non-specific findings are present in one-third of the biopsies.<sup>60</sup>

*Immunophenotype*

Sézary cells are mature helper T cells with a memory cell phenotype, showing the following immunoprofile: CD2, CD3, CD4, CD5, CD45 RO, and CD30<sup>-</sup>.<sup>63</sup> The majority of SS cells are also CLA<sup>+</sup> and CD7<sup>-</sup>.<sup>65</sup> However, further studies have shown that the neoplastic cell population is present in both the CD7<sup>+</sup> and CD7<sup>-</sup> subset in the same patient.<sup>63</sup> More recently, Bernengo et al.<sup>66</sup> have demonstrated that CD4<sup>+</sup> SS cells typically lose CD26 and that a diagnosis of SS or MF with hematological involvement can be made if the CD26 subset exceeds 30% of the CD4<sup>+</sup> cells.<sup>65</sup> In about two-third of patients with SS, complete loss of T-cell antigens such as CD2, CD3, CD4, or CD5 may be found.<sup>66</sup>

*Molecular findings and genetics*

Using multiplex-fluorescence *in situ* hybridization (M-FISH) and CGH, recurrent unbalanced translocations associated with deletions can be detected in samples from SS patients. Characteristic cytogenetic

abnormalities in SS particularly involve 1p, 10q, 14q, and 15q.<sup>67</sup> The dominant chromosome changes in SS appear to be numerical losses rather than structural aberrations, and as of yet, no reciprocal balanced translocations with a leukemogenic candidate fusion gene such as *RA-PML* in promyelocytic leukemia have been detected. Chromosome losses have been associated with clonal evolution during disease progression through non-disjunction of chromosomes. The underlying causative chromosomal instability in SS cells remains yet to be elucidated in cell-cycle checkpoint studies.

An alternative approach to clarify important molecular events in cutaneous lymphoma has been taken on by SEREX-based identification of a tumor-specific antigen.<sup>68</sup> A heterogeneous expression pattern of cancer/testis antigens has been demonstrated in SS, including Gage, MAGE-1, MAGE-3, MAGE-C1, NY-ESO-1, and TS85.<sup>69</sup> Recently, two differentiation antigens p140 and SCS have been reported in circulating SS cells, and p140 was also found in skin-infiltrating cells of patients with SS.<sup>70</sup> No differences in expression of cellular interaction molecules, such as ICAM-1, LFA-1, CD40, and CD40 ligand, exist between MF and SS.<sup>58</sup>

The signal transducers and activators of transcription (STAT) family members play an important role in regulating T-cell activation.<sup>71</sup> Dysregulated expression of STAT5<sub>α</sub>, a naturally occurring COOH-terminal truncated isoform of STAT5, in malignant T cells in SS syndrome can suppress STAT5-dependent gene expression, which may, in turn, contribute to the cellular transformation.<sup>72</sup>

More recently, oligonucleotide array analysis has allowed gene expression comparison between SS cells and CD4<sup>+</sup> T cells isolated from the blood of patients with erythroderma secondary to atopic or chronic dermatitis and of healthy volunteers. For the analysis, the authors included SS patients with a high percentage of CD4<sup>+</sup> SS cells in the peripheral blood mononuclear cells. The SS samples displayed a relatively homogeneous gene-expression pattern and could be distinguished from benign CD4<sup>+</sup> T cells using an unsupervised hierarchical clustering analysis algorithm. Two genes (*Twist* and *Ephrin A4*) were consistently upregulated, whereas transcripts were nearly undetectable in any of the control samples in microarray experiments and consecutive real-time quantitative PCR. The *Twist* gene encodes a basic helix-loop-helix family transcription factor involved in mesodermal differentiation and is normally not expressed in lymphoid cells.<sup>73,74</sup> An oncogenic property of *Twist* has been proposed via prevention of c-myc-induced apoptosis by antagonizing the p53 pathway.<sup>75</sup> *Ephrin A4* (*EphA4*) belongs to the Eph receptor subfamily of

transmembrane protein-tyrosine kinases that are preferentially expressed in neurons but has also been detected in human T cells. Its involvement in tumorigenesis is attractive, as it has been shown that *EphA4* can activate the JAK/STAT pathway.<sup>76,77</sup> *EphA4* expression in CTCL has not been reported at the protein level. If indeed activation of *EphA4* can be pinpointed as an early or crucial event in transformation of T cells, it may be an attractive target for antitumor therapy, analogous to the success story of inhibition of BCR-ABL by imatinib in chronic myelogenous leukemia patients.

Consistent with earlier reports, high expression of *JunB*, *versican*, *TRAIL*, *T-plastin*, *Kir3DL2*, *integrin β<sub>1</sub>*, as well as low expression of *STAT4*, *TGF-β receptor II*, *Fas*, and *CD26* have been found in SS T cells. Contradictory to previous reports, increased rather than decreased levels of *TIA-1* and *SHP-1* tumor suppressor transcripts were recently described.<sup>78</sup> Kari and colleagues<sup>79</sup> performed filter array analysis on partly purified SS cells, and compared their expression pattern to *in vitro* Th1- and Th2-skewed PBMCs. The array data were validated by real-time qPCR. One of the main objectives was to develop biomarkers for identification of clinically difficult-to-detect patients with low tumor burden. This study suggested that the loss of expression of Th1-skewing *STAT4*, together with increased expression of *RhoB* and other genes, can be used in penalized discriminant analysis (PDA<sup>80</sup>) to separate patients with SS cell counts as low as 5% from control patients with inflammatory diseases or from Th2-skewed blood samples. In addition, short-term survivors of SS syndrome, independent of their tumor burden, have a detectably different gene expression pattern from patients classified as long-term survivors. One explanation could be that the malignant cells impose, via their direct or indirect cytokine release, an expression pattern on other PBMCs that may be detected as a CTCL signature.

The two published gene-expression analysis studies on SS cells address different questions, rely on different sampling of patient material, and use different data analysis methods, perhaps explaining the study discrepancies. For a more accurate study of expression analysis of tumor cells in SS syndrome, a thorough clone purification by fluorescence-activated cell sorting of the Vβ TCR domain may prove to be advantageous.

#### *CD30<sup>+</sup> T-cell lymphoproliferative disorders of the skin*

CD30<sup>+</sup> T-cell LPD of the skin (CD30<sup>+</sup> LPD) comprise a clinical and morphologic spectrum of diseases including lymphomatoid papulosis (LyP), primary cutaneous anaplastic large-cell lymphoma

(ALCL), as well as so-called borderline cases.<sup>81–83</sup> The hallmark of the tumor cells is the expression of CD30, a cytokine receptor belonging to the tumor necrosis factor receptor (TNFR) superfamily. Although they share CD30 expression as a common immunophenotypic feature, the diseases within the group of CD30<sup>+</sup> LPD differ in their clinical and histological presentations.<sup>84,85</sup> The final diagnosis has to include careful correlation of histologic findings with clinical manifestations of the disease when evaluating infiltrates with CD30<sup>+</sup> tumor cells.<sup>86</sup>

*Lymphomatoid papulosis*

Lymphomatoid papulosis (LyP), described in 1968 by Macaulay, is a chronic recurrent, self-healing papulo-nodular skin eruption with histologic features of a malignant lymphoma.<sup>87</sup>

*Synonyms in other classifications*

WHO/EORTC classification (2005): CD30 lymphoproliferative disorders of the skin – lymphomatoid papulosis

WHO classification (2001): CD30 lymphoproliferative disorders of the skin – lymphomatoid papulosis

REAL classification (1997): not listed

EORTC classification (1997): lymphomatoid papulosis

*Histology*

The histological features of LyP are variable and depend on the stage of the lesions and disease. Three histologic patterns have been differentiated (Table 2).<sup>88,89</sup> In type A (Fig. 6A), tumor cells are large atypical cells, resembling Reed-Sternberg-like cells (Fig. 6B). In type B, a band-like infiltrate of small cerebriform cells is found. The type C lesions exhibit large atypical lymphoid cells growing in cohesive sheets with only a few intermingled reactive inflammatory cells (Fig. 6C). Epidermotropism can be present. In addition, in type A lesions, there are numerous inflammatory cells such as neutrophils, eosinophils, and histiocytes as well as few plasma cells and a prominent edema in the upper dermis. Variants of lymphomatoid papulosis include cases with a perifollicular distribution and those with lymphocytic vasculitis or dermal mucin deposits.<sup>88</sup> There may be various histologic types in individual

patients at the same time, depending also on the stage and age of the lesion.<sup>90</sup>

Differentiation between LyP and other CD30<sup>+</sup> LPD must be based on correlation of clinical presentation and histologic findings.

*Immunophenotype*

The tumor cells in LyP express the marker profile of mature T cells [CD3<sup>+</sup>, CD4<sup>+</sup>, CD8<sup>-</sup>, CD30<sup>+</sup>, and CD56<sup>+</sup> (10%)] (Fig. 6D) and of activated T cells [HLA-DR and CD25 (interleukin 2-receptor)], thus representing a proliferation of activated T-helper cells.<sup>91–95</sup> Usually one or more T-cell antigens such as CD2 and CD5 are expressed, whereas CD7 expression is often absent. CD15, which is a characteristic marker for Reed-Sternberg cells in Hodgkin lymphoma, is not expressed by tumor cells in LyP. In contrast to tumor cells expressing CD30 as a hallmark of LyP type A and type C, the small tumor cells with cerebriform nuclei in LyP type B are usually negative for CD30. Recent studies indicate that almost all tumor cells in LyP and ALCL express cytotoxic molecules such as TIA-1 and granzyme B.<sup>96</sup> The presence of large CD30<sup>+</sup> T cells is not diagnostic *per se* for LyP, as there is an enlarging number of benign reactive conditions in which CD30<sup>+</sup> cells can be found.<sup>97</sup>

*Molecular findings and genetics*

The findings of translocation studies for t(2;5) are controversial, showing translocation and the t(2;5)-associated p80 NPM/ALK fusion protein in some CD30<sup>+</sup> cutaneous lymphoma and LyP<sup>98,99</sup> whereas it is absent in most cases.<sup>100</sup> Furthermore, conflicting data on the detection of clonality among the large CD30<sup>+</sup> tumor cells and small lymphocytes have been reported.<sup>101,102</sup> On the other hand, in cases in which LyP is associated with MF, both diseases have been shown to harbor the same T-cell clone, indicating that both diseases are different clinical manifestations of the same T-cell proliferation.<sup>103</sup>

*Primary cutaneous anaplastic large-cell lymphoma*

Primary cutaneous and primary nodal CD30<sup>+</sup> ALCL are distinct clinical entities which share histologic features and display a certain overlap in immunophenotype, but differ in age of onset,

Table 2. Histologic types of lymphomatoid papulosis (LyP)<sup>89</sup>

Histologic type	Morphologic criteria
LyP type A	Scattered CD30 <sup>+</sup> blast cells in an extensive inflammatory infiltrate
LyP type B	Mycosis fungoides-like features with atypical small CD30 <sup>+</sup> T cells with cerebriform nuclei and epidermotropism
LyP type C	Large clusters of CD30 <sup>+</sup> cells with few inflammatory cells, histologically suggesting ALCL



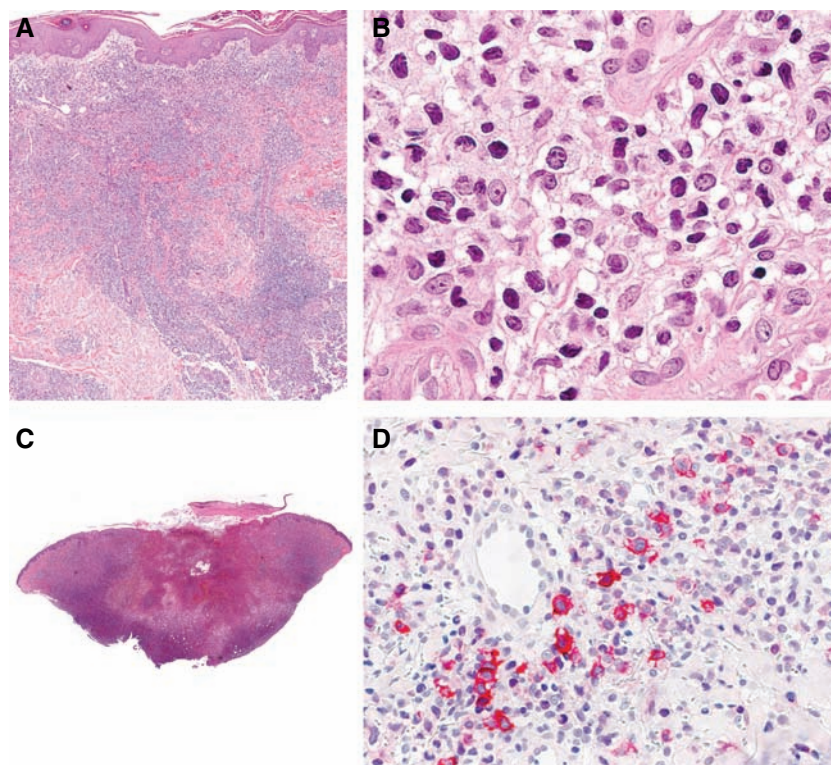


Fig. 6. A) Lymphomatoid papulosis: dense superficial and deep wedge-shaped infiltrate, slight acanthosis, and parakeratosis of the overlying epidermis. B) Lymphomatoid papulosis: Medium-to-large-sized pleomorphic or anaplastic tumor cells. C) Lymphomatoid papulosis: dense superficial and deep lymphocytic infiltrate with central necrosis and ulceration. D) Lymphomatoid papulosis: tumor cells show CD30 positivity.

genetic features, etiology, and prognosis.<sup>104–106</sup> Clinically, cutaneous ALCL presents as a single or multiple grouped nodules or tumors, confined to one extremity or body area.

*Synonyms in other classifications*

- WHO/EORTC classification (2005): primary cutaneous anaplastic large-cell lymphoma
- WHO classification (2001): primary cutaneous anaplastic large-cell lymphoma
- REAL classification (1997): anaplastic large-cell lymphoma, CD30<sup>+</sup>
- EORTC classification (1997): primary cutaneous large-cell T-cell lymphoma, CD30<sup>+</sup>

*Histology*

There is a dense nodular infiltrate of atypical lymphoid cells with pleomorphic, anaplastic, or immunoblastic cytomorphology, extending through all levels of the dermis into the subcutis (Fig. 7A). Epidermotropism is an inconsistent feature. The morphologic hallmark are large, bizarre cells with irregularly shaped nuclei and one or multiple nucleoli. They may be multinucleated, and often have abundant, pale, or eosinophilic cytoplasm (Fig. 7B). Tumor cells usually grow in dense cohesive sheets, reminiscent of nodular malignant melanoma or undifferentiated carcinoma. Mitoses are frequent. Clusters of small reactive lymphocytes

are found within and around the tumor. Eosinophils, plasma cells, and accessory dendritic cells usually are not prominent in ALCL. Neutrophil-rich or pyogenic CD30<sup>+</sup> ALCL features small aggregations or scattered CD30<sup>+</sup> medium-to-large pleomorphic lymphoid cells within an extensive infiltrate of neutrophils.<sup>107,108</sup> Recently, keratoacanthoma-like epidermal hyperplasia overlying the lymphoid infiltrate was reported.<sup>109</sup>

*Immunophenotype*

ALCL is defined by CD30 expression of at least 75% of the large pleomorphic, anaplastic, or immunoblastic lymphoid cells (Fig. 7C). Primary cutaneous CD30<sup>+</sup> ALCL have an activated T-cell phenotype with expression of T-cell-associated antigens CD2, CD3, CD4, and CD45RO and activation markers such as CD25 (IL-2R), CD30, CD71, and HLA-DR. Variable loss of T-cell antigens (CD2, CD3, and CD5) can be found.<sup>110</sup> Expression of T-cell markers on tumor cells is usually weaker than on reactive lymphocytes.<sup>110</sup> In contrast to nodal ALCL, primary cutaneous forms do not express EMA but may express the cutaneous lymphocyte antigen (CLA and HECA-452) and homeobox gene HOXC5.<sup>111</sup> Primary cutaneous ALCL is negative for the anaplastic lymphoma-related tyrosine kinase (ALK) in the vast majority of cases.

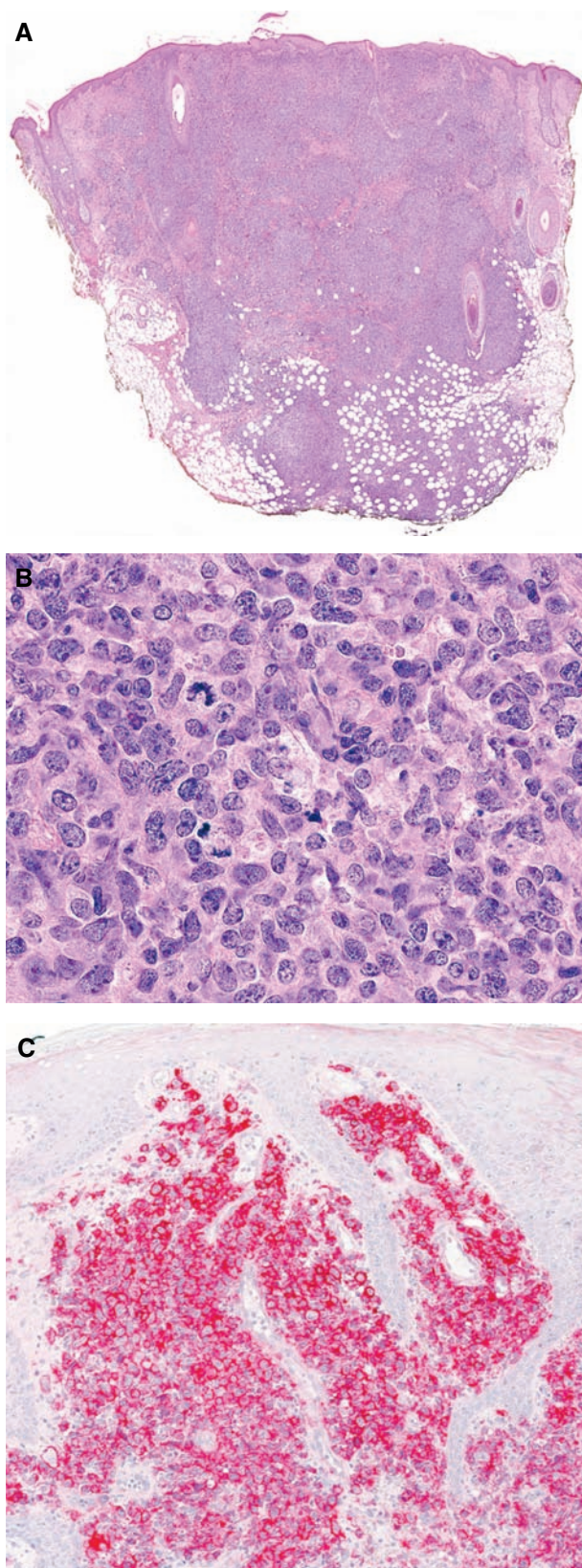


Fig. 7. A) Primary cutaneous ALCL: deep reaching circumscribed infiltrate of pale lymphoid cells. B) Primary cutaneous ALCL: dense infiltrate of large lymphoid cells with broad cytoplasm and pleomorphic or anaplastic nuclei with coarse chromatin. Mitotic activity is high. C) Primary cutaneous ALCL: characteristic CD30 positivity.

#### *Molecular findings and genetics*

Over 90% of cases of primary cutaneous ALCL display clonal rearrangement of TCR genes by Southern blot and PCR.<sup>112</sup> A high percentage of nodal CD30<sup>+</sup> ALCLs have a t(2;5)(p23;q35) translocation resulting in expression of t(2;5)-associated p80 NPM/ALK fusion protein. This translocation is never or extremely rarely found in primary cutaneous CD30<sup>+</sup> lymphomas. This is of particular importance because lack of ALK expression in cutaneous lymphomas is not a prognostic factor, whereas ALK<sup>-</sup> nodal lymphomas show a significantly worse prognosis compared to their ALK<sup>+</sup> counterparts.<sup>113</sup> Systemic ALCL may present with cutaneous disease, and the identification of ALK expression is helpful in this distinction. In primary cutaneous ALK<sup>-</sup>ALCL, disease progression is not dependent on p53 mutation or conversion to ALK positivity.<sup>114</sup>

A recent study on gene expression pattern comparing ALK<sup>+</sup> and ALK<sup>-</sup> tumor cells of primary systemic ALCL showed significant discriminator cDNAs allowing a correct grouping of all ALK<sup>+</sup> and ALK<sup>-</sup> tumors. However, a clear picture of the dominant signal-transduction pathway activated by NPM-ALK failed to emerge from this microarray data.<sup>115</sup>

#### *Subcutaneous panniculitis-like T-cell lymphoma*

Subcutaneous panniculitis-like T-cell lymphoma (SPTCL) is a lymphoproliferative disease originating and presenting primarily in the subcutaneous fat tissue, simulating panniculitis. Only SPTCLs expressing an  $\alpha/\beta$  phenotype are referred as SPTCL *sui generis* in the WHO/EORTC classification, whereas cases with a  $\gamma/\delta$  phenotype are included in the group of peripheral T-cell lymphomas, not otherwise specified (NOS).

#### *Synonyms in other classifications*

WHO/EORTC classification (2005): subcutaneous panniculitis-like T-cell lymphoma

WHO classification (2001): subcutaneous panniculitis-like T-cell lymphoma

REAL classification (1997): subcutaneous panniculitis-like T-cell lymphoma

EORTC classification (1997): subcutaneous panniculitis-like T-cell lymphoma

#### *Histology*

The histopathologic hallmark of this type of CTCL is the subcutaneous localization and growth pattern of usually non-epidermotropic focal infiltrates, which involve predominantly the lobules of the subcutaneous fat and simulate lobular panniculitis



(Fig. 8).<sup>116,117</sup> Karyorrhexis and fat necrosis are prominent features. The neoplastic lymphocytes usually have hyperchromatic nuclei. Their sizes range from small cells with round nuclei and inconspicuous nucleoli to larger transformed cells with hyperchromatic nuclei. Rimming of adipocytes by tumor cells is a common, but not specific, finding for SPTCL (Fig. 8). Many vacuolated and foamy histiocytes are found especially in areas of infiltration and destruction, and erythrophagocytosis can be present. Since the lymphoproliferative process is focal, broad and deep biopsies are required to establish the diagnosis. Cutaneous  $\gamma\delta$  T-cell lymphomas can have a panniculitis-like component, but commonly show both dermal and epidermal involvement in addition to subcutaneous disease.<sup>118-121</sup> Plasma cells and reactive lymphoid follicles are generally absent, in contrast to lupus profundus, and other forms of lobular panniculitis.

In some cases of SPTCL, the infiltrates in initial phases may appear deceptively reactive, and the differential diagnosis may be difficult.<sup>122,123</sup> As the disease evolves, the dermis may become involved by tumoral infiltrates.<sup>124</sup> Biopsies may demonstrate either a non-specific panniculitis or lipomembranous panniculitis with calcified lipomembranes. Therefore when SPTCL is suspected, continued follow-up with repeated biopsies is important.<sup>125</sup>

*Immunophenotype*

Because the phenotype of tumor cells has been linked to aggressiveness of the disease, immunophenotyping has both therapeutic and prognostic implications.

Tumor cells are derived from  $\alpha\beta$  T cells with a cytotoxic profile. They express T-cell-associated antigens CD2<sup>+</sup>, CD3<sup>+</sup>, CD5<sup>+</sup>, CD4<sup>-</sup>, CD8<sup>+</sup>, CD43<sup>+</sup>, and cytotoxic proteins such as TIA-1, granzyme B, and perforin.<sup>117</sup> A TCR  $\alpha/\beta$  ( $\beta$ F1<sup>+</sup>) phenotype is

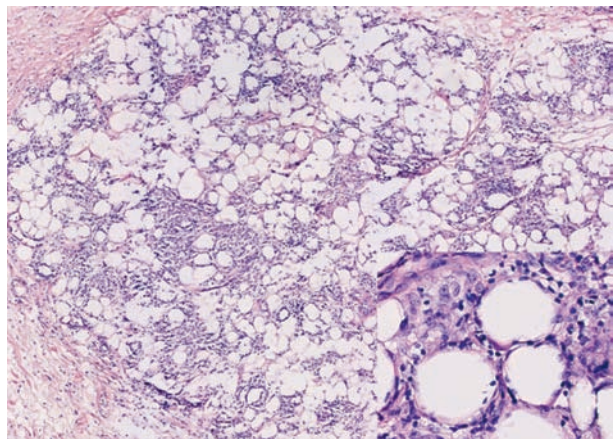


Fig. 8. Subcutaneous panniculitis-like T-cell lymphoma: Mostly lobular lymphoid infiltrate resembling lobular panniculitis; inset shows rimming of lymphocytes around adipocytes.

found. Clonal rearrangement of TCR genes is present in the majority of the cases. Rarely, CD30<sup>+</sup> forms of SPTCL have been described.<sup>126,127</sup>

*Molecular findings and genetics*

The neoplastic cells show rearrangement of T-cell receptor genes. In a series of six patients from the UK those derived from  $\gamma/\delta$  T cells carried a poor prognosis and were CD56<sup>+</sup>, while a more indolent group was derived from  $\alpha\beta$  T cells.<sup>120</sup> Takeshita and colleagues<sup>128</sup> showed in 22 Japanese patients that the 11 cases with CD56<sup>-</sup> SPTCL cells had characteristics of CD3 $\epsilon$ <sup>-</sup>, CD8<sup>-</sup>, TcR $\beta$ F1<sup>-</sup>, TIA-1<sup>-</sup>, and granzyme B<sup>+</sup> T cells and were negative for apoptosis-promoting proteins CD95 (Fas), Bax, CPP32 (caspase 3), and p53. On the other hand, the 11 CD56<sup>+</sup> cases presented with tumor cells positive for CD3 $\epsilon$ , TIA-1, granzyme B, CD95, CD95L (FasL), Bax, and CPP32.

Some cases of SPTCL, particularly in Asians, were reported to be associated with EBV.<sup>129</sup> Most cases of SPTCL in Western countries are EBV<sup>-</sup>.<sup>117,118,122</sup> EBV and CD56 positivity can result in confusion with nasal type NK lymphoma, which often involves the subcutis.

*Primary cutaneous peripheral T-cell lymphoma, unspecified (PTL, NOS)*

This category of peripheral T-cell lymphomas encompasses per definition all T-cell neoplasms that do not fit into any of the better defined subtypes of T-cell lymphoma/leukemia. As such it constitutes a heterogeneous group of diseases, representing less than 10% of all CTCL.<sup>130</sup> They are CD30<sup>-</sup> and show an aggressive behavior in most, but not all cases.

The following disorders have been included as provisional entities in the group of PTL:

1. Cutaneous gamma/delta T-cell lymphoma
2. Primary cutaneous aggressive epidermotropic CD8<sup>+</sup> cytotoxic T-cell lymphoma
3. Primary cutaneous CD4<sup>+</sup> small/medium-sized pleomorphic T-cell lymphoma

*Cutaneous gamma/delta T-cell lymphoma*

Cutaneous  $\gamma/\delta$  T-cell lymphoma (CGDTCL) is a clonal proliferation of mature, activated  $\gamma/\delta$  T cells expressing a cytotoxic phenotype. This group includes cases of SPTCL with a  $\gamma/\delta$  phenotype. In the 2001 WHO classification, these were grouped together with SPTCL of  $\alpha/\beta$  origin.<sup>131</sup> Whether cutaneous and mucosal  $\gamma/\delta$  T-cell lymphomas are all part of the same disease spectrum is unclear.<sup>132-134</sup>



### Histology

Three major histologic patterns can be seen: epidermotropic, dermal, and subcutaneous. Usually more than one histologic pattern is present in the same patient either in different specimens or within a single biopsy. Epidermal infiltration may occur, ranging from mild epidermotropism to marked pagetoid reticulosis-like infiltrates.<sup>46,135,136</sup> Subcutaneous nodules may be panniculitis-like or more solid in appearance and may show rimming of fat cells similar to SPTCL of  $\alpha/\beta$  origin.<sup>137</sup> Dermal and epidermal involvement often coexists with subcutaneous disease, in contrast to SPTCL of  $\alpha/\beta$  origin, which is mainly or exclusively subcutaneous in distribution.<sup>117,120,137</sup> The neoplastic cells are generally medium to large in size with coarsely clumped chromatin and irregular nuclei. Apoptosis and necrosis are common, often with vascular invasion.<sup>137</sup>

### Immunophenotype

The cells are CD3<sup>+</sup>, CD2<sup>+</sup>, CD43<sup>+</sup>, CD45RO<sup>+</sup>, CD15<sup>-</sup>, CD30<sup>-</sup>, CD20<sup>-</sup>, CD25<sup>-</sup>, and CD7<sup>+/-</sup>, but usually negative for CD5.<sup>132</sup> Most CGDTCLs lack both CD4 and CD8 but some are CD8<sup>+121</sup> and may express natural killer cell-associated antigens such as CD56.<sup>137</sup> The cells are positive for TCR  $\gamma/\delta$  in frozen sections but lack  $\beta$ F1, a formalin-resistant epitope of the  $\alpha/\beta$  T-cell receptor. As most laboratories only perform immunohistochemical studies on formalin-fixed paraffin embedded tissues, a lack of staining for  $\beta$ -F1 in an infiltrate that has a T-cell phenotype is the best way to infer the diagnosis of CGDTCL at present. The neoplastic cells are positive for TIA-1 and the cytotoxic proteins granzyme B, granzyme M, and perforin.<sup>118,137,138</sup>

### Molecular findings and genetics

The cells show clonal rearrangement of the TCR gamma gene. TCR beta may be rearranged or deleted, but is not expressed. Cases with predominant subcutaneous involvement express Vdelta2, but this has not been studied in other CGDTCL.<sup>117,139</sup> EBV is generally negative in primary CGDTCL.<sup>134,140</sup>

### Primary cutaneous aggressive epidermotropic CD8<sup>+</sup> cytotoxic T-cell lymphoma

Clinically, this form of CD8<sup>+</sup> cutaneous lymphoma differs from the slowly progressive CD8<sup>+</sup> form similar to classic MF. It presents with erosive plaques rather than patches. It exhibits an unfavorable prognosis with rapid course.

### Histology

There is a pagetoid pattern with prominent epidermotropism showing acanthosis, spongiosis, necrosis, and erosion (Fig. 9).<sup>141</sup> In some cases, angiocentric and angiodestructive features have been described.<sup>142</sup>

### Immunophenotype

The tumor cells express CD3, CD8, CD7, CD45RA, CD45RO and beta F1 as well as TIA-1. The CD2<sup>-</sup>, CD7<sup>+</sup> phenotype seems to be associated with a more aggressive course.<sup>143</sup> With disease progression, tumor cells may acquire CD7 or lose CD2.

### Primary cutaneous CD4<sup>+</sup> small/medium-sized pleomorphic T-cell lymphoma

This is a non-cytotoxic CTCL characterized by a predominance of small to medium-sized CD4<sup>+</sup> pleomorphic T cells with clinical features not compatible with MF.

### Histology

The diffuse or nodular lymphoid infiltrate is monomorphous, predominantly perivascular and periadnexal and shows a tendency to extend to the subcutaneous tissue. It consists of small-to-medium-sized pleomorphic lymphoid cells with irregular hyperchromatic nuclei and a pale scanty cytoplasm (Fig. 10).<sup>144</sup> A small proportion (<30%) of large pleomorphic cells may be present.<sup>130</sup> Mitoses are observed. Eosinophils and plasma cells and histiocytes may be admixed. Epidermotropism is absent

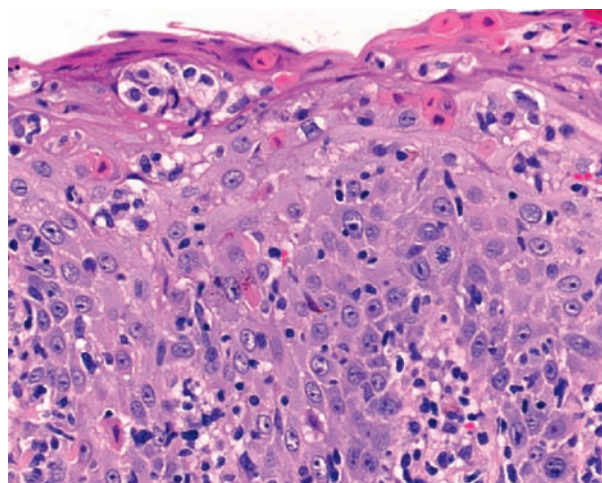


Fig. 9. Primary cutaneous aggressive epidermotropic CD8<sup>+</sup> cytotoxic T-cell lymphoma: pronounced epidermotropism and apoptotic keratinocytes.

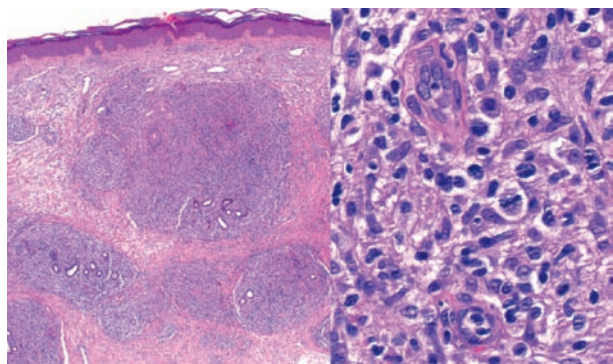


Fig. 10. Small-medium CD4<sup>+</sup> TCL: dermal nodular lymphoid infiltrate without epidermotropism (left) containing small to medium sized pleomorphic tumor cells (right).

in most cases, but granulomatous features are found in a subset of cases.<sup>145</sup>

*Immunophenotype*

These lymphomas have a CD3<sup>+</sup>, CD4<sup>+</sup>, CD8<sup>-</sup>, and CD30<sup>-</sup> T-helper phenotype sometimes with loss of pan T-cell markers. Cytotoxic proteins are not expressed. CD20<sup>+</sup> B cells may be admixed.<sup>146</sup>

*Molecular findings and genetics*

Clonal rearrangement of TCR genes has been detected in almost all cases and may be useful in distinguishing SPTCL from reactive T-cell infiltrate (T-cell pseudolymphoma)<sup>144</sup> which may also present with a solitary plaque or nodule. No consistent cytogenetic abnormalities have yet been identified.

Cutaneous B-cell lymphomas

*Cutaneous marginal zone B-cell lymphoma (MZL)*

*Synonyms in other classifications*

- WHO&/EORTC classification (2005): cutaneous marginal zone B-cell lymphoma
- WHO classification (2001): extranodal marginal zone lymphoma of MALT type
- REAL classification (1997): extranodal marginal zone B-cell lymphoma
- EORTC classification (1997): primary cutaneous marginal zone B-cell lymphoma

*Histology*

The nodular or diffuse infiltrate is composed of small to medium-sized lymphocytes possessing slightly irregular nuclei with moderately dispersed chromatin and inconspicuous nucleoli and an abundant, pale cytoplasm (marginal zone cells)<sup>147,148</sup> (Fig. 11A). Some cells have a monocytoid appearance (reniform nuclei) or show prominent plasma

cell differentiation<sup>149</sup> (Fig. 11B). The characteristic ‘inverse pattern’ may be seen on scanning magnification, typified by darker centers surrounded by brighter zones of pale-staining cells. Reactive germinal centers with distinct mantle zones are commonly found in early lesions but may become colonized by tumor cells as the disease progresses. The colonized follicles lack a distinct germinal center/mantle zone demarcation and have a more variable cellular composition, including marginal zone cells, centrocytes, and centroblasts. The cellular population in the interfollicular areas is represented by small to medium-sized, centrocyte-like, or monocytoid cells with slightly irregular nuclei, moderately dispersed chromatin, inconspicuous nucleoli, and a rim of pale cytoplasm.<sup>147,148,150</sup> Occasionally, the infiltrate is arranged around adnexal structures. Small lymphocytes can also surround and infiltrate eccrine coils, in a manner analogous to that found in the lymphoepithelial lesions of MALT lymphoma of the gastrointestinal tract<sup>151</sup> in some cases resulting in vertical columns of cells.<sup>152</sup>

Primary cutaneous marginal zone B-cell lymphoma includes cases previously designated as primary cutaneous immunocytoma<sup>153</sup> with high numbers of monotypic plasma cells and lymphoplasmacytoid cells showing intranuclear (Dutcher bodies) and intracytoplasmic PAS<sup>+</sup> globular inclusions, representing immunoglobulin deposits.

*Immunophenotype*

The neoplastic cells have the following immunophenotype: CD19<sup>+</sup>, CD20<sup>+</sup>, CD22<sup>+</sup>, CD79a<sup>+</sup>, CD5<sup>-</sup>, CD10<sup>-</sup>, CD23<sup>-</sup>, bcl-6<sup>-</sup>, bcl-2<sup>+154,155</sup> (Fig. 11C–E). Monotypic expression of immunoglobulin light chains is seen in the majority of cases. It is best assessed in cases in which plasmacytoid cells are present in confluent aggregates rather than just occurring as single, scattered cells. CD21 staining often reveals regular and irregular networks of follicular dendritic cells (FDCs) corresponding to the sites of colonized follicles. In some cases large, expanded, diffuse FDC networks may be seen. Germinal center cells in the colonized and reactive follicles as well as in the expanded FDC networks are usually bcl-6<sup>+</sup> and bcl-2<sup>-</sup>. CD30<sup>+</sup> blasts can often be found. There is a variable number of reactive CD3<sup>+</sup> T cells admixed to the neoplastic B cells (Fig. 11F).

*Molecular findings and genetics*

IgH genes are clonally rearranged in the majority (>70%) of cases.<sup>156</sup> The most common translocation in gastric MZL, the t(11;18) involving the API2/MLT genes, has not been demonstrated in primary cutaneous MZL,<sup>157,158</sup> but the



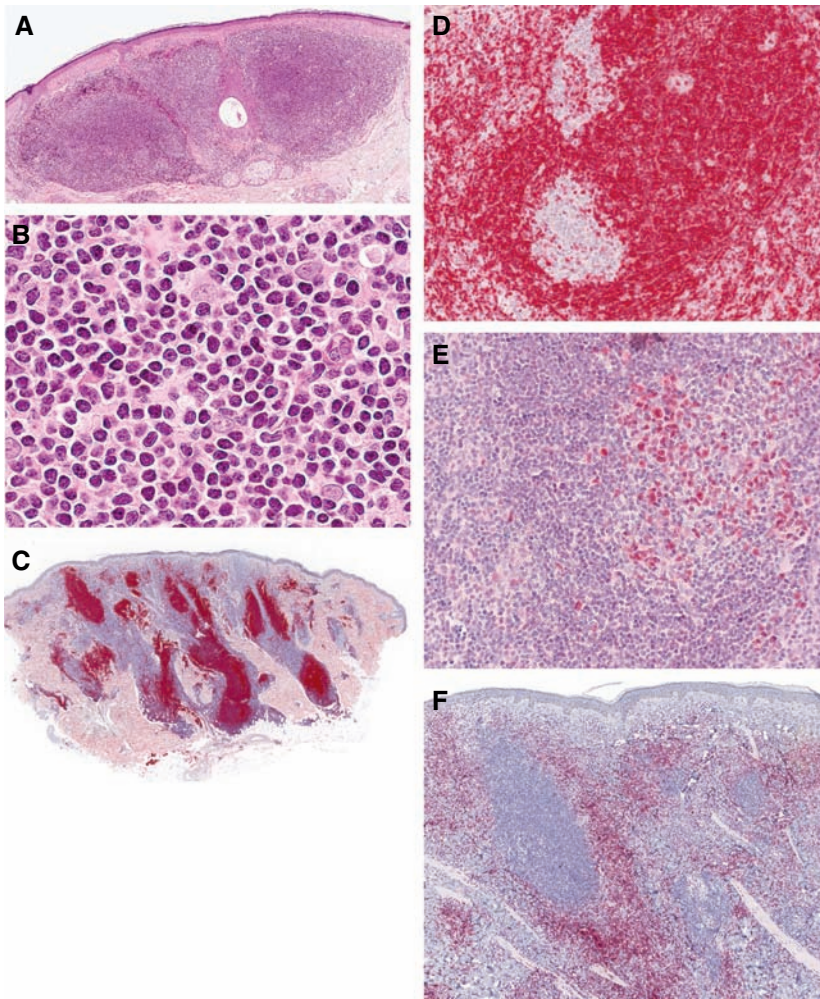


Fig. 11. A) Primary cutaneous marginal zone B-cell lymphoma (MZL): Superficial and deep nodular infiltrate, showing paler zone around darker central areas. Germinal centers are invaded by tumor cells. No epidermotropism (grenz zone). B) Primary cutaneous MZL: infiltrate of small lymphocytes with slight nuclear atypia (monocytoid aspect). C) Primary cutaneous MZL: low magnification shows CD20<sup>+</sup> infiltrate surrounded by CD20<sup>-</sup> T-cell population. D) Primary cutaneous MZL: strong positivity of the tumor cells for bcl-2 and remnants of germinal centers are negative. E) Primary cutaneous MZL: bcl-6 shows inverse reaction to bcl-2: remnant of the germinal center is positive, cells of marginal zone are negative. F) Primary cutaneous MZL: the centers are CD3<sup>-</sup>, surrounded by population with CD3<sup>+</sup> cells.

t(14;18)(q32;q21) translocation involving IGH and MALT1 was reported in approximately one-third of cases.<sup>158</sup> Fas gene mutations are present in a minority of cases, similar to MZL of other extranodal sites. Abnormalities of bcl-10 are absent.<sup>159</sup>

#### Primary cutaneous follicle center lymphoma

##### Synonyms in other classifications

WHO/EORTC classification (2005): primary cutaneous follicle center lymphoma

WHO classification (2001): cutaneous follicle center lymphoma

REAL classification (1997): follicle center lymphoma, follicular

EORTC classification (1997): primary cutaneous follicle center cell lymphoma

Follicle center lymphoma (FCL) and MZL are the most common types of primary cutaneous B-cell lymphomas. In contrast to MZL, FCL shows a predilection for the scalp, forehead, and trunk.<sup>160-162</sup> Synonyms for follicular lymphoma include

reticulohistiocytoma of the back or Crosti lymphoma.<sup>163</sup> Three growth patterns can be differentiated: follicular, follicular and diffuse, and diffuse. The most important differential diagnoses include follicular pseudolymphoma (or reactive lymphoid hyperplasia), MZL, and diffuse large B-cell lymphoma. In contrast to nodal FCL, primary cutaneous FCLs have a favorable prognosis with 5-year-survival rates over 90%. They share their biologic behavior with other extranodal forms of FCL as shown recently by Goodlad and coworkers.<sup>164</sup>

##### Histology

Primary cutaneous FCL is defined as a neoplasm with differentiation of follicle center cells (centrocytes and centroblasts) displaying a follicular, follicular and diffuse or a diffuse growth pattern. Grading of primary cutaneous FCL as in its nodal counterpart based on the proportion of centroblasts (Grades 1-3) is not prognostically relevant.

FCL shows a nodular or diffuse infiltrate within the dermis, often extending into the subcutaneous tissue (Fig. 12A), and contains a mixture of



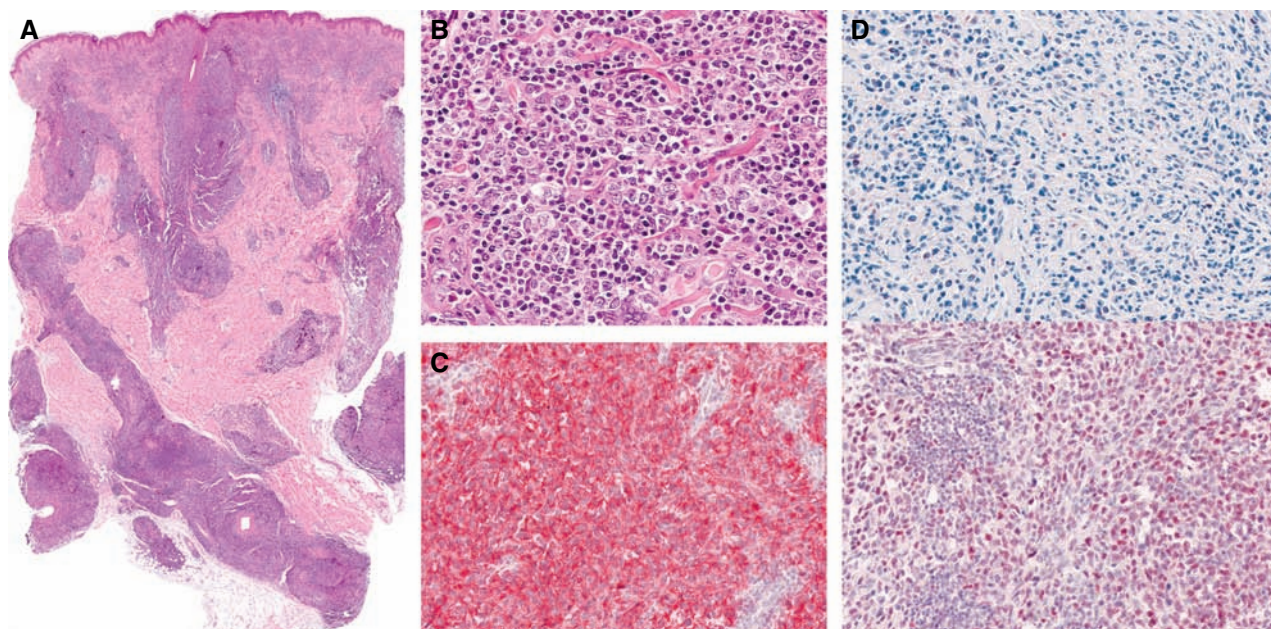


Fig. 12. A) Primary cutaneous Follicle center lymphoma (FCL): scanning magnification shows dense nodular lymphoid infiltrate. B) Primary cutaneous FCL: the infiltrate consists of centrocyte-like and centroblast-like tumor cells. C) Primary cutaneous FCL: expression of CD20 by tumor cells. D) Primary cutaneous FCL: the cells are bcl-2<sup>-</sup> (top) and bcl-6<sup>+</sup> (bottom).

centrocytes and centroblasts (Fig. 12B) with variable growth patterns, and may be follicular, follicular and diffuse, or diffuse. In most cases, there is a subepidermal Grenz zone. In contrast to the polymorphous follicular composition in reactive infiltrates (pseudolymphoma or lymphoid hyperplasia) characterized by an admixture of centrocytes, centroblasts, immunoblasts, and tingible body macrophages,<sup>165</sup> neoplastic follicles in FCL show a relatively monomorphic cellular composition with a low number of mitoses, no or only few tingible body macrophages and lack of starry sky features.<sup>166</sup>

#### Immunophenotype

The cells express B-cell markers and are CD19<sup>+</sup>, CD20<sup>+</sup>, CD22<sup>+</sup>, CD79a<sup>+</sup>, CD5<sup>-</sup>, CD23<sup>+/-</sup>, and CD43 (Fig. 12C).<sup>165</sup> CD10 is variably expressed (often positive in follicular cases and more frequently negative in lesions with diffuse pattern of growth). Interfollicular CD10<sup>+</sup> blasts may be present singly or in clusters in follicular cases. Tumor cells express bcl-6 and in most cases are negative for bcl-2 (Fig. 12D).<sup>167</sup> The MUM/IRF4 antigen, which is positive in diffuse large B-cell lymphoma, is not expressed in FCL. Monotypic staining for surface immunoglobulins (sIg) is more often seen in cryostat sections. Absence of detectable sIg staining is common in tumors showing a diffuse population of large follicular center cells. A major difference between primary and secondary follicular lymphoma involving cutaneous sites is the presence of the bcl-2 translocation, which is

usually present in 75–95% of nodal follicular lymphomas. It is less often found in primary cutaneous FCL.<sup>167</sup> This discrepancy has led to speculation that primary cutaneous FCL may be a separate disease. The follicles are associated with FDCs and are positive for CD21, CD23, and CD35. Residual, scattered FDC may be sometimes found in diffuse large-cell infiltrates. Neoplastic cells are constantly CD5<sup>-</sup> and CD43<sup>-</sup>. Admixed T cells may be abundant and sometimes dominant, particularly in small, early lesions.

#### Molecular findings and genetics

Clonally rearranged immunoglobulin genes can be regularly detected. Bcl-2 gene rearrangement and t(14;18) chromosomal translocation are absent in most cases.<sup>167–170</sup> In systemic B-cell lymphoma, inactivation of p15(INK4b) and p16(INK4a) is frequently observed and may be associated with a poor prognosis. In primary cutaneous B-cell lymphoma, p15(INK4b) and p16(INK4a) biallelic gene abnormalities are common, most frequently as a result of promoter hypermethylation.<sup>171</sup> In a minority of primary cutaneous FCL, chromosomal imbalances have been identified by CGH analysis, but a consistent pattern has not been emerged.<sup>173,173</sup> Storz and colleagues<sup>174</sup> were the first to analyze expression profiles of primary cutaneous B-cell lymphoma; the FCL samples group well together, implying that these tumors share a similar overall gene-expression pattern and arise from germinal center cells.

*Cutaneous diffuse large B-cell lymphoma (DLBCL)*

*Synonyms in other classifications*

WHO/EORTC classification (2005): cutaneous diffuse large B-cell lymphoma

WHO classification (2001): diffuse large B-cell lymphoma

REAL classification (1997): diffuse large B-cell lymphoma

EORTC classification (1997): primary cutaneous large B-cell lymphoma of the leg

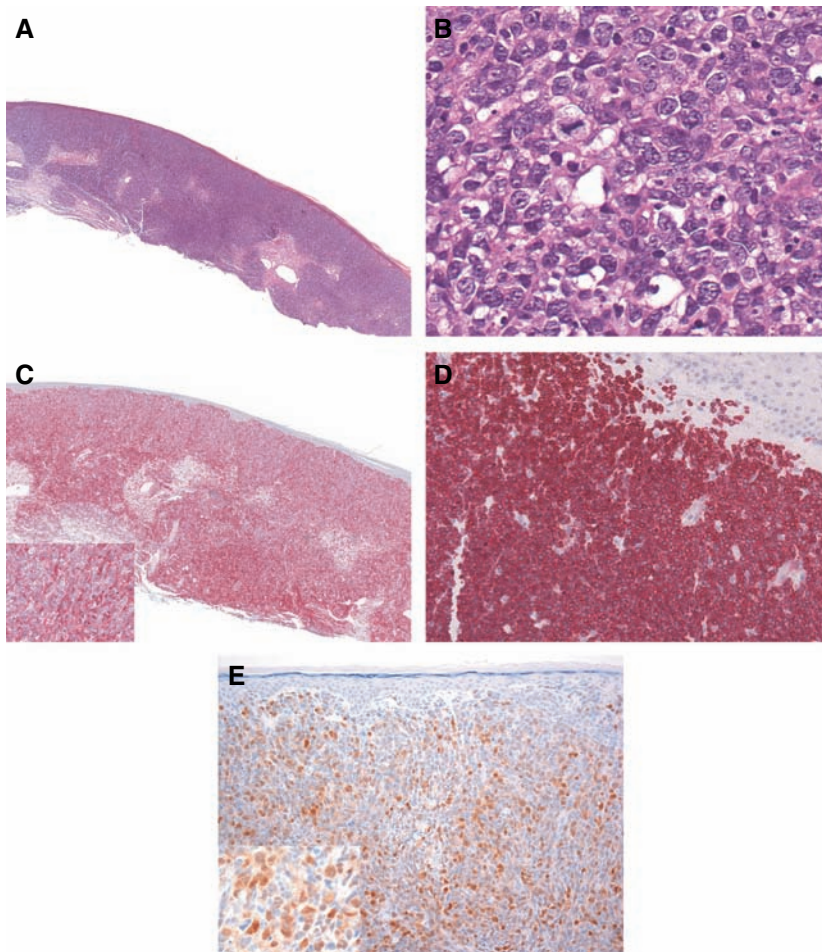
Primary cutaneous diffuse large B-cell lymphomas (PCDLBCL) are composed of large B cells (centroblasts and immunoblasts).<sup>175,176</sup> Two forms of primary cutaneous LBCL are distinguished in the WHO-EORTC Consensus classification: DLBCL, leg-type and DLBCL, other. The most common variant, DLBCL, leg-type, usually occurs on the leg and less frequently at other sites. Other variants are referred to as DLBCL, other and comprise T-cell/histiocyte-rich DLBCL, plasmablastic lymphoma and others that do not fulfill the criteria for a DLBCL, leg-type. In former classifications, some of these variants might have been referred to as centroblastic lymphoma, immunoblastic lymphoma,

reticulohistiocytoma of the dorsum (Crosti disease), anaplastic large-cell B-cell lymphomas, multilobate large B-cell lymphomas, and still other names.

*Diffuse large B-cell lymphoma (DLBCL), leg-type*

*Histology*

A diffuse growth pattern is found with an monomorphous infiltrate involving the entire dermis. Adnexal structures are usually destroyed (Fig. 13A). The infiltrate may extend into subcutaneous tissue. The epidermis is often spared with a Grenz zone. The infiltrate is composed of monomorphic medium-sized to large B cells resembling centroblasts with large non-cleaved nuclei and nucleoli attached to the nuclear membrane, or immunoblasts with a large vesicular nucleus and a prominent centrally placed nucleolus (Fig. 13B). In contrast to FCL, centrocytes are absent. Mitotic figures can frequently be detected. The nuclei are predominantly round with coarsely clumped chromatin. There is usually a minimal inflammatory component and little stromal reaction.



*Fig. 13.* A) Primary cutaneous diffuse large B-cell lymphoma (DLBCL): dense, monomorphous lymphoid infiltrate through the dermis; adnexa are destroyed. B) Primary cutaneous DLBCL: infiltrate of large lymphoid cells with coarse chromatin and high mitotic activity resembling mostly centroblasts. C) Primary cutaneous DLBCL: strong CD79a positivity throughout the tumor; inset shows high mitotic activity. D) Primary cutaneous DLBCL: strong bcl-2 positivity of tumor cells. E) Primary cutaneous DLBCL: Strong positivity of tumor cells for Mum-1.

*Immunophenotype*

The tumor cells express CD19<sup>+</sup>, CD20<sup>+</sup>, CD22<sup>+</sup>, and CD79a<sup>+</sup> (Fig. 13C), and CD5<sup>-</sup>, CD10<sup>-</sup>, and CD138<sup>-</sup>, cyclin D1<sup>-</sup>. Bcl-6 is variably expressed but mostly positive. Deletion or promoter region hypermethylation of the p16INK4a gene was detected in two patients with DLBCL. Loss of B-cell markers also occurs.<sup>177</sup> The strong positivity for Bcl-2 protein (Fig. 13D) and MUM-1/IRF4<sup>178</sup> (Fig. 13E) is an important feature of this type of lymphoma, independent from the localization, leg or other sites, distinguishing this entity from FCL with diffuse growth pattern (Table 3). These immunophenotypic features have been shown in nodal DLBCL to correlate with an activated B-cell gene-expression profile, which is usually predictive of an aggressive clinical course.<sup>179</sup> Among all primary cutaneous large B-cell lymphomas, Bcl-6<sup>+</sup> and MUM-1 cases had a better overall survival than Bcl-6<sup>-</sup>, MUM-1<sup>+</sup> cases (176 vs. 26 months).<sup>180</sup> In the group of DLBCL leg type, MUM-1 is not a prognostic marker.

*Molecular findings and genetics*

The immunoglobulin genes are clonally rearranged. The t(14;18) can be detected in secondary cutaneous large B-cell lymphomas but not in primary cutaneous diffuse large B-cell lymphomas. Expression of p53 protein missense or loss-of-function mutations in the p53 gene may be found in some patients. The bcl-2/JH translocation is absent.<sup>181-183</sup> Significant differences have not been identified among tumors of the leg-type arising in different sites.<sup>178,182</sup>

In a study of gene expression profiles by Storz et al.,<sup>174</sup> analysis of arrays shows that primary cutaneous DLBCL cluster is adjacent to FCL samples, whereas secondary cutaneous DLBCL cases are removed from these two groups, suggesting that they are biologically and molecularly distinct. There is a characteristic B-cell germinal center (GC) signature in tonsil, primary and secondary

cutaneous FCL, and in primary cutaneous DLBCL, suggesting that these diseases are more closely related than expected from earlier histological and immunohistological analyses. In contrast, secondary cutaneous DLBCL lacked the expression of B-cell GC signature. Plasma cell signature on the other side could be identified in two of five MZL with prominent plasmacytoid differentiation. Subsequently, Hoefnagel and colleagues<sup>184</sup> studied gene-expression profiles of eight primary cutaneous FCL with a diffuse large-cell histology and 13 pcDLBCLs-leg using Affymetrix oligonucleotide arrays. The pcDLBCL-leg lymphoma presented an ‘activated B cell’ ABC-like DLBCL expression pattern, the primary cutaneous FCL a ‘germinal center B’ GCB-like DLBCL transcription signature, as defined by Wright et al.<sup>185</sup> The transcript with the greatest variation was SPINK2, whose function still remains to be elucidated. It is highly expressed in FCL, but absent or only very low in pcDLBCL leg type samples. Consistent with previous studies,<sup>155</sup> strong Bcl-2 protein expression was found in almost all pcDLBCL leg type, but not in the FCL. In recent years, staining for bcl-2, bcl-6, and CD10 has become the standard marker set for differential diagnosis of cutaneous B-cell LPD as depicted in Table 3. Additionally, MUM1/IRF4 seems to be of value for delineating DLBCL with poorer outcome. MUM1/IRF4 has been suspected to play a role in the progression of B-cell lymphoma/leukemia by regulating the expression of various genes including the monokine induced by interferon-gamma.<sup>186</sup> In systemic DLBCL, cases with coexpression of survivin and T332 have a significantly worse prognosis than single-positive and double-negative cases, and so survivin and the novel monoclonal antibody, T332, might be of prognostic value for this group. High levels of caspase 3 and absence of p16 expression in pcDLBCL also indicate a poor prognosis.<sup>187</sup>

The pathologic, immunophenotypic and molecular features of primary cutaneous large B-cell lymphoma of the leg and at other sites indicate that they are similar both with morphofunctional and molecular profiles, and therefore it is justified to refer to altogether as DLBCL, leg-type in analogy to similar terms in the classification of lymphomas such as nasal type.

*Diffuse large B-cell lymphoma, other*

This term refers to other lymphomas showing a diffuse growth pattern, composed of large transformed B-cells that lack the typical features of DLBCL, leg-type and do not conform to the definition of primary cutaneous FCL with diffuse growth pattern. These tumors contain a monomorphic population of centroblast-like cells and often present

Table 3. Summary on phenotypical features of cutaneous B-cell lymphomas and pseudolymphomas

	Bcl-2	Bcl-6	CD10	(14; 18)	MUM1/IRF4
MZL/ICY	+	-	-	-	-
FCL	-	+	+/-	-	-
Secondary FCL	+	+	+	+	-
DLBCL	+	+	-	-/+	+
PSL	-	+	+	-	-

MZL/ICY, marginal zone lymphoma/immunocytoma; FCL, follicle center lymphoma; Secondary FCL secondary cutaneous FCL; DLBCL, diffuse large B-cell lymphoma; PSL, pseudolymphoma or reactive lymphoid hyperplasia. The term pseudolymphoma is used by dermatologists as a synonym for any type of reactive infiltrate in the skin that is extensive enough to cause a tumor or nodule.



with a mixed inflammatory background. Bcl-2 protein may be negative, whereas bcl-6 will usually be expressed.

*T-cell/histiocyte-rich diffuse large B-cell lymphoma*

This rare variant of a DLBCL is defined by the predominance of non-neoplastic T cells admixed with scattered large tumoral B cells.<sup>188</sup>

*Histology*

There are a few large pleomorphic cells with clear cytoplasm and multilobular nuclei resembling Hodgkin or Reed–Sternberg cells scattered within a background of reactive small T lymphocytes (>75%) (Fig. 14), some of which have irregular nuclear contours, epithelioid histiocytes, and plasma cells. Centroblasts and immunoblasts can be observed. There may be a marked vascular proliferation in some cases.<sup>188,189</sup>

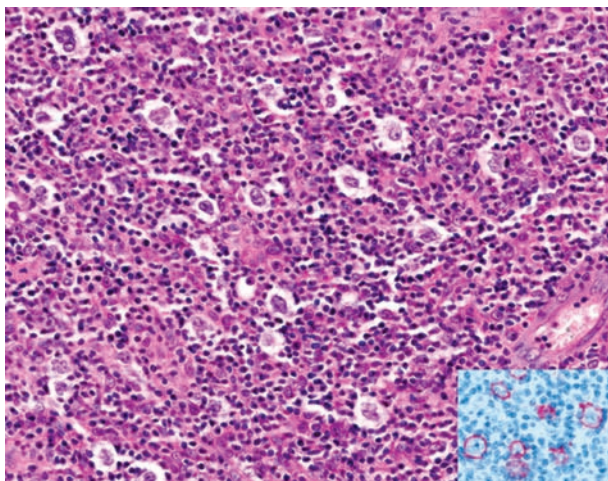
*Immunophenotype*

The large neoplastic cells express pan-B-cell antigens CD19 (Fig. 14), CD22, and CD79a, with light-chain restriction, but are negative for CD15 and CD30, which excludes Hodgkin lymphoma. The reactive small-cell population represents T-helper cells but small reactive B cells can also be found.<sup>190</sup> Due to the lower number of tumor cells, detection of IgH gene rearrangements may be difficult to assess in some cases.

*Intravascular large B-cell lymphoma (IVL)*

*Synonyms in other classifications*

WHO/EORTC classification (2005): intravascular large B-cell lymphoma



*Fig. 14.* T cell-rich B-cell lymphoma (BCL): detail of the infiltrate consisting of many reactive T lymphocytes (smaller cells) and scattered large blastic B cells. Inset: large cells are positive for CD20.

WHO classification (2001): intravascular large B-cell lymphoma (IV-LBL)

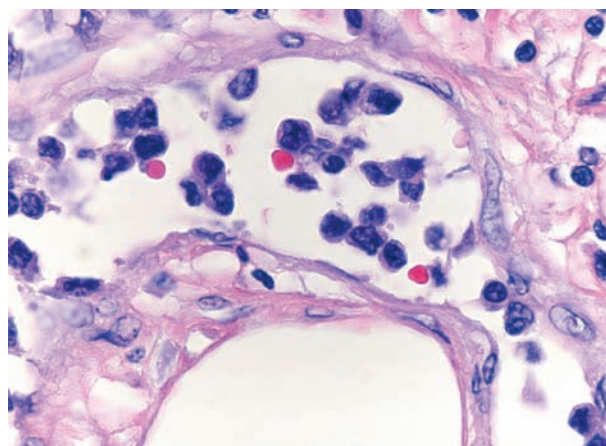
REAL classification (1997): diffuse large B-cell lymphoma

EORTC classification (1997): intravascular large B-cell lymphoma (provisional entity)

Intravascular lymphoma is a rare highly malignant large-cell lymphoma with systemic spread, characterized by the presence of tumor cells in the lumina of small vessels, particularly capillaries and venules. The skin and the nervous system are preferential sites of primary manifestation. The tumor cells express B-cell markers in the vast majority of cases; rarely a T-cell phenotype is found. Other synonyms include systemic angioendotheliomatosis,<sup>191</sup> intravascular lymphomatosis, and Tappeiner–Pfleger syndrome. Neoplastic angioendotheliomatosis has to be differentiated from reactive angioendotheliomatosis, which may develop in conjunction with a variety of underlying systemic inflammatory or neoplastic diseases.<sup>192,193</sup> Patients with disease limited to the skin (cutaneous variant) have a significantly better outcome than the other patients with IVL.<sup>194</sup>

*Histology*

The microscopic features are pathognomonic showing a dense proliferation of atypical large lymphoid cells with round or oval nuclei within the lumina of capillaries and postcapillary venules<sup>195,196</sup> (Fig. 15). Tumor cells are large with vesicular nuclei, prominent nucleoli, and frequent mitoses. Partial occlusion of vessels by tumor cells and fibrin thrombi results in the clinical features of reticular erythema and livedo reticularis. Extravascular involvement may occur.<sup>197</sup>



*Fig. 15.* Intravascular large B-cell lymphoma: large atypical blastic B cells intravascularly.

*Immunophenotype*

Tumor cells usually express B-cell-associated antigens and may coexpress CD10 or CD5,<sup>198,199</sup> CD11a, and CD49d (VLA-4).<sup>200</sup> Most IVLs overexpress bcl-2 protein.<sup>197</sup> Rare cases with a T-cell phenotype have been described. There is no bcl-2 gene rearrangement.<sup>25,201,202</sup> These cases have to be distinguished from other intravascular lymphomas of different lineages.<sup>203-205</sup> A defect in homing receptors and adhesion molecules on the neoplastic cells and the endothelial cells has been suggested to be responsible for the intravascular trapping of lymphoid tumor cells.<sup>206,207</sup> However, the precise mechanisms of lymphoid-endothelial interaction leading to vascular occlusion and thrombotic events are not clear.

*Molecular findings and genetics*

Rearrangements of IgH family genes is seen in IVL. Structural aberrations in chromosomes 1, 6, and 18, especially 1p and trisomy 18, have been found in some cases.<sup>208</sup> Mutations of p53, p16, and p21 genes do not seem to be involved with IVL cells.<sup>209</sup> CD29 (beta1 integrin subunit), CD43 (leukosialin), CD44 (H-CAM), CD54 (ICAM-1), embryonal NCAM (e-NCAM), and episialin are molecules known to be involved in lymphocyte and endothelial adhesion processes.<sup>207</sup> In IVL, the intravascular neoplastic lymphocytes express CD44 but are negative for CD29 and for CD54. The absence of CD29 and CD54 in IVL may contribute to the intravascular and disseminated distribution pattern.<sup>207</sup>

*Blastic NK-cell lymphoma or CD4<sup>+</sup>/CD56<sup>+</sup> hematodermic neoplasm*

*Synonyms in other classifications*

WHO/EORTC classification (2005): CD4<sup>+</sup>/CD56<sup>+</sup> hematodermic neoplasm; blastic NK-cell lymphoma  
 WHO classification (2001): blastic NK-cell lymphoma  
 REAL classification (1997): not listed  
 EORTC classification (1997): not listed

Although the cell of origin is not yet completely elucidated, the immunophenotypic profile (CD4<sup>+</sup>, CD56<sup>+</sup>, and CD123<sup>+</sup>) suggests that the tumor cells represent most probably precursor cells related to activated plasmacytoid monocytes.<sup>210</sup> Cytogenetically, they are related to myeloid and to lymphoid precursor cells (type 2 dendritic cells).

Skin involvement occurs in 87% of the patients and manifests with contusiform, brownish infiltrated plaques or nodules.<sup>211,212</sup> The oral mucosa is commonly involved.

*Histology*

Histologically, monomorphous, non-epidermotropic medium-to-large-sized tumor cells with round or pleomorphic nuclei form a diffuse dense infiltrate throughout the dermis, separated from the epidermis by a small Grenz zone (Fig. 16). Erythrocyte extravasation is a characteristic feature, explaining the bruise-like appearance.

*Immunophenotype*

The cells express CD4, CD56, CD123 and TCL-1 but are negative for other T-, B-, NK-cell, or myeloid markers. In contrast myelomonocytic neoplasms coexpresses CD43 and CD74 in addition to myeloid markers (CD13, CD15, myeloperoxidase, and lysozyme). A minority of tumor cells in some cases also may express CD68 or TdT.<sup>213</sup>

*Molecular findings and genetics*

Because the tumor cells are not related to T-cells, there is no clonal rearrangement of TCR genes.

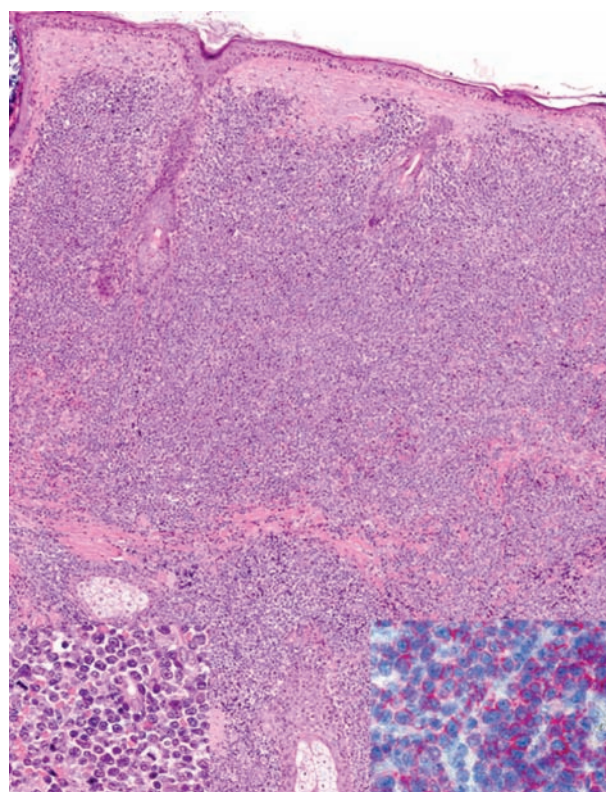


Fig. 16. Blastic natural killer-cell lymphoma: dense diffuse infiltrate throughout the dermis, sparing the Grenz zone; left inset: large blastic cells with coarse chromatin, nucleoli and high mitotic activity; right inset: CD56<sup>+</sup> tumor cells.

**Conclusions**

Because the microscopic studies of Xavier Gillot (1842–1910) and Louis Antoine Ranvier (1835–1922) in Paris indicated that MF was caused by regeneration of lymphoid tissue in the skin and that MF had to be considered as a cutaneous manifestation of lymphoma–lymphadénie cutanée,<sup>214</sup> there has never been a reason for classifying cutaneous lymphomas differently from lymphomas at other sites with same pathogenetic background. The new WHO/EORTC classification of cutaneous lymphomas, which employs a terminology compatible with systemic lymphomas but also reflects the organ-specific peculiarities of cutaneous lymphomas.

**Acknowledgements**

We are grateful to Walter Burgdorf, MD, for his assistance in language editing.

**References**

- Burg G, Kempf W, Katakov DV, et al. WHO/EORTC classification of cutaneous lymphomas. In: Burg G, Katakov DV, ed. *Cutaneous lymphomas*. Marcel Dekker, Francis & Taylor, New York 2005.
- Willemze R, Jaffe ES, Burg G, et al. WHO–EORTC classification for cutaneous lymphomas. *Blood* 2005; 105: 3768.
- Burg G, Jaffe ES, Kempf W, et al. WHO–EORTC classification of cutaneous lymphomas. In: Leboit P, Burg G, Weedon D, Sarasin A, ed. *WHO books: tumors of the skin*. Lyon: WHO IARC, 2005.
- LeBoit P, Burg G, Weedon D, Sarasin A, eds. *Tumors of the skin*. Lyon: WHO IARC, 2005.
- Willemze R, Kerl H, Sterry W, et al. EORTC classification for primary cutaneous lymphomas: a proposal from the Cutaneous Lymphoma Study Group of the European Organization for Research and Treatment of Cancer. *Blood* 1997; 90: 354.
- Jaffe E, Nancy LH, Stein H, Vardiman JW, eds. *Tumors of hematopoietic and lymphoid tissues*. Lyon: IARC, 2001.
- Jaffe ES, Harris NL, Diebold J, Muller-Hermelink HK. World Health Organization classification of lymphomas: a work in progress. *Ann Oncol* 1998; 9: S25.
- Burg G, Kempf W, Haeflner A, et al. From inflammation to neoplasia: new concepts in the pathogenesis of cutaneous lymphomas. *Recent Results Cancer Res* 2002; 160: 271.
- Burg G, Dummer R, Nestle FO, Doebbeling U, Haeflner A. Cutaneous lymphomas consist of a spectrum of nosologically different entities including mycosis fungoides and small plaque parapsoriasis. *Arch Dermatol* 1996; 132: 567.
- Smoller BR, Bishop K, Glusac E, Kim YH, Hendrickson M. Reassessment of histologic parameters in the diagnosis of mycosis fungoides. *Am J Surg Pathol* 1995; 19: 1423.
- Santucci M, Biggeri A, Feller AC, Massi D, Burg G. Efficacy of histologic criteria for diagnosing early mycosis fungoides: an EORTC cutaneous lymphoma study group investigation. *European Organization for Research and Treatment of Cancer. Am J Surg Pathol* 2000; 24: 40.
- Pimpinelli N, Olsen EA, Santucci M, et al. Defining early mycosis fungoides. *J Am Acad Dermatol* 2005 in press.
- Massone C, Kodama K, Kerl H, Cerroni L. Histopathologic features of early (patch) lesions of mycosis fungoides: a morphologic study on 745 biopsy specimens from 427 patients. *Am J Surg Pathol* 2005; 29: 550.
- Santucci M, Burg G, Feller AC. Interrater and intrarater reliability of histologic criteria in early cutaneous T-cell lymphoma. An EORTC cutaneous lymphoma project group study. *Dermatol Clin* 1994; 12: 323.
- Shapiro PE, Pinto FJ. The histologic spectrum of mycosis fungoides/Sezary syndrome (cutaneous T-cell lymphoma). A review of 222 biopsies, including newly described patterns and the earliest pathologic changes. *Am J Surg Pathol* 1994; 18: 645.
- Guitart J, Kennedy J, Ronan S, Chmiel JS, Hsiegh YC, Variakojis D. Histologic criteria for the diagnosis of mycosis fungoides: proposal for a grading system to standardize pathology reporting. *J Cutan Pathol* 2001; 28: 174.
- Lund KA, Parker CM, Norins AL, Tejada E. Vesicular cutaneous T cell lymphoma presenting with gangrene. *J Am Acad Dermatol* 1990; 23: 1169.
- Wain EM, Orchard GE, Mayou S, Atherton DJ, Misch KJ, Russell-Jones R. Mycosis fungoides with a CD56<sup>+</sup> immunophenotype. *J Am Acad Dermatol* 2005; 53: 158.
- Mao X, Lillington D, Scarisbrick JJ, et al. Molecular cytogenetic analysis of cutaneous T-cell lymphomas: identification of common genetic alterations in Sezary syndrome and mycosis fungoides. *Br J Dermatol* 2002; 147: 464.
- Karenko L, Hyytinen E, Sarna S, Ranki A. Chromosomal abnormalities in cutaneous T-cell lymphoma and in its premalignant conditions as detected by G-banding and interphase cytogenetic methods. *J Invest Dermatol* 1997; 108: 22.
- van Doorn R, Dijkman R, Vermeer MH, Starink TM, Willemze R, Tensen CP. A novel splice variant of the Fas gene in patients with cutaneous T-cell lymphoma. *Cancer Res* 2002; 62: 5389.
- Sommer VH, Clemmensen OJ, Nielsen O, et al. In vivo activation of STAT3 in cutaneous T-cell lymphoma. Evidence for an antiapoptotic function of STAT3. *Leukemia* 2004; 18: 1288.
- Navas IC, Algara P, Mateo M, et al. p16(INK4a) is selectively silenced in the tumoral progression of mycosis fungoides. *Lab Invest* 2002; 82: 123.
- Navas IC, Ortiz-Romero PL, Villuendas R, et al. p16(INK4a) gene alterations are frequent in lesions of mycosis fungoides. *Am J Pathol* 2000; 156: 1565.
- Zhang Q, Raghunath PN, Vonderheid E, Odum N, Wasik MA. Lack of phosphotyrosine phosphatase SHP-1 expression in malignant T-cell lymphoma cells results from methylation of the SHP-1 promoter. *Am J Pathol* 2000; 157: 1137.
- Scarisbrick JJ, Woolford AJ, Calonje E, et al. Frequent abnormalities of the p15 and p16 genes in mycosis fungoides and sezary syndrome. *J Invest Dermatol* 2002; 118: 493.
- Scarisbrick JJ, Mitchell TJ, Calonje E, Orchard G, Russell-Jones R, Whittaker SJ. Microsatellite instability is associated with hypermethylation of the hMLH1 gene and reduced gene expression in mycosis fungoides. *J Invest Dermatol* 2003; 121: 894.
- van Doorn R, Zoutman WH, Dijkman R, et al. Epigenetic profiling of cutaneous T-cell lymphoma: promoter



- hypermethylation of multiple tumor suppressor genes including *BCL7a*, *PTPRG*, and *p73*. *J Clin Oncol* 2005; 23: 3886.
29. Rubben A, Kempf W, Kadin ME, Zimmermann DR, Burg G. Multilineage progression of genetically unstable tumor subclones in cutaneous T-cell lymphoma. *Exp Dermatol* 2004; 13: 472.
  30. LeBoit PE. Variants of mycosis fungoides and related cutaneous T-cell lymphomas. *Semin Diagn Pathol* 1991; 8: 73.
  31. Kazakov DV, Burg G, Kempf W. Clinicopathological spectrum of mycosis fungoides. *J Eur Acad Dermatol Venereol* 2004; 18: 397.
  32. Kossard S, Weller P. Pseudotumorous folliculotropic mycosis fungoides. *Am J Dermatopathol* 2005; 27: 224.
  33. Flaig MJ, Cerroni L, Schuhmann K, et al. Follicular mycosis fungoides. A histopathologic analysis of nine cases. *J Cutan Pathol* 2001; 28: 525.
  34. Kanno S, Nüzuma K, Machida S, et al. Follicular mucinosis developing into cutaneous lymphoma. Report of two cases and review of literature and 64 cases in Japan. *Acta Derm Venereol (Stockh)* 1984; 64: 86.
  35. van Doorn R, Scheffer E, Willemze R. Follicular mycosis fungoides, a distinct disease entity with or without associated follicular mucinosis: a clinicopathologic and follow-up study of 51 patients. *Arch Dermatol* 2002; 138: 191.
  36. Cerroni L, Fink-Puches R, Back B, Kerl H. Follicular mucinosis: a cal reappraisal of clinicopathologic features and association with mycosis fungoides and Sezary syndrome. *Arch Dermatol* 2002; 138: 182.
  37. Ketron LW, Goodman MH. Multiple lesions of the skin apparently of epithelial origin resembling clinically mycosis fungoides. *Arch Dermatol* 1931; 24: 758.
  38. Woringer F, Kolopp P. Lésion érythématosquameuse polycyclique de nt-bras évoluant depuis 6 ans chez un garçonnet de 13 ans. *Ann Dermatol Syphilol* 1939; 10: 945.
  39. Braun-Falco O, Marghescu S, Wolff HH. Pagetoide reticulose. *Hautarzt* 1973; 24: 11.
  40. Deneau DG, Wood GS, Beckstead J, Hoppe RT, Price N. Woringer-Kolopp disease (pagetoid reticulosis). Four cases with histopathologic, ultrastructural, and immunohistologic observations. *Arch Dermatol* 1984; 120: 1045.
  41. Burg G. [Pagetoid skin infiltrates]. *Pathologe* 1986; 7: 199.
  42. Kohler S, Rouse RV, Smoller BR. The differential diagnosis of pagetoid cells in the epidermis. *Mod Pathol* 1998; 11: 79.
  43. Kaudewitz PBG, Stein H, Klepzig K, Mason DY, Braun-Falco O. Monoclonal antibody patterns in lymphomatoid papulosis. *Dermatol Clin* 1985; 3: 749.
  44. Mackie RM, Turbitt ML. A case of pagetoid reticulosis bearing the T cytotoxic suppressor surface marker on the lymphoid infiltrate: further evidence that pagetoid reticulosis is not a variant of mycosis fungoides. *Br J Dermatol* 1984; 110: 89.
  45. Haghghi B, Smoller BR, LeBoit PE, Warnke RA, Sander CA, Kohler S. Pagetoid reticulosis (Woringer-Kolopp disease): an immunophenotypic, molecular, and clinicopathologic study. *Mod Pathol* 2000; 13: 502.
  46. Berti E, Cerri A, Cavicchini S, et al. Primary cutaneous gamma/delta T-cell lymphoma presenting as disseminated pagetoid reticulosis. *J Invest Dermatol* 1991; 96: 718.
  47. Drillenburger P, Bronkhorst CM, van der Wal AC, Noorduynd LA, Hoekzema R, Pals ST. Expression of adhesion molecules in pagetoid reticulosis (Woringer-Kolopp disease). *Br J Dermatol* 1997; 136: 613.
  48. LeBoit PE. Granulomatous slack skin. *Dermatol Clin* 1994; 12: 375.
  49. Clarijs M, Poot F, Laka A, Pirard C, Bourlond A. Granulomatous slack skin: treatment with extensive surgery and review of the literature. *Dermatology* 2003; 206: 393.
  50. Wada K, Maesawa C, Satoh T, Akasaka T, Masuda T. A case of primary cutaneous CD30<sup>+</sup> T-cell lymphoproliferative disorder with features of granulomatous slack skin disease. *Br J Dermatol* 2002; 147: 998.
  51. LeBoit PE, Beckstead JH, Bond B, Epstein WL, Frieden IJ, Parslow TG. Granulomatous slack skin: clonal rearrangement of the T-cell receptor beta gene is evidence for the lymphoproliferative nature of a cutaneous elastolytic disorder. *J Invest Dermatol* 1987; 89: 183.
  52. Grammatico P, Balus L, Scarpa S, et al. Granulomatous slack skin: cytogenetic and molecular analyses. *Cancer Genet Cytogenet* 1994; 72: 96.
  53. von den Driesch P, Mielke V, Simon MJ, Staib G, Tacke J, Sterry W. ["Granulomatous slack skin" – cutaneous elastolytic lymphoma]. *Hautarzt* 1994; 45: 861.
  54. Balus L, Manente L, Remotti D, Grammatico P, Bellocchi M. Granulomatous slack skin. Report of a case and review of the literature. *Am J Dermatopathol* 1996; 18: 199.
  55. Vonderheid EC, Bernengo MG, Burg G, et al. Update on erythrodermic cutaneous T-cell lymphoma: report of the International Society for Cutaneous Lymphomas. *J Am Acad Dermatol* 2002; 46: 95.
  56. Imai S, Burg G, Braun FO. Mycosis fungoides and Sezary's syndrome show distinct histomorphological features. *Dermatologica* 1986; 173: 131.
  57. Sentis HJ, Willemze R, Scheffer E. Histopathologic studies in Sezary syndrome and erythrodermic mycosis fungoides: a comparison with benign forms of erythroderma. *J Am Acad Dermatol* 1986; 15: 1217.
  58. Kamarashev J, Burg G, Kempf W, Hess Schmid M, Dummer R. Comparative analysis of histological and immunohistological features in mycosis fungoides and Sezary syndrome. *J Cutan Pathol* 1998; 25: 407.
  59. Buechner SA, Winkelmann RK. Sezary syndrome. A clinicopathologic study of 39 cases. *Arch Dermatol* 1983; 119: 979.
  60. Trotter MJ, Whittaker SJ, Orchard GE, Smith NP. Cutaneous histopathology of Sezary syndrome: a study of 41 cases with a proven circulating T-cell clone. *J Cutan Pathol* 1997; 24: 286.
  61. Haneke E. [Granulomatous Sezary syndrome with epithelial islands]. *Z Hautkr* 1984; 59: 951.
  62. Walsh NM, Prokopetz R, Tron VA, et al. Histopathology in erythroderma: review of a series of cases by multiple observers. *J Cutan Pathol* 1994; 21: 419.
  63. Dummer R, Nestle FO, Niederer E, et al. Genotypic, phenotypic and functional analysis of CD4<sup>+</sup> CD7<sup>+</sup> and CD4<sup>+</sup> CD7<sup>-</sup> T lymphocyte subsets in Sezary syndrome. *Arch Dermatol Res* 1999; 291: 307.
  64. Picker LJ, Michie SA, Rott LS, Butcher EC. A unique phenotype of skin-associated lymphocytes in humans. Preferential expression of the HECA-452 epitope by benign and malignant T cells at cutaneous sites. *Am J Pathol* 1990; 136: 1053.
  65. Harmon CB, Witzig TE, Katzmann JA, Pittelkow MR. Detection of circulating T-cells with Cd4(+) Cd7(-) immunophenotype in patients with benign and malignant lymphoproliferative dermatoses. *J Am Acad Dermatol* 1996; 35: 404.
  66. Bernengo MG, Novelli M, Quaglini P, et al. The relevance of the CD4<sup>+</sup> CD26<sup>-</sup> subset in the identification of circulating Sezary cells. *Br J Dermatol* 2001; 144: 125.
  67. Mao X, Lillington DM, Czepulkowski B, Russell-Jones R, Young BD, Whittaker S. Molecular cytogenetic

- characterization of Sezary syndrome. *Genes Chromosomes Cancer* 2003; 36: 250.
68. Eichmuller S, Usener D, Dummer R, Stein A, Thiel D, Schadendorf D. Serological detection of cutaneous T-cell lymphoma-associated antigens. *Proc Natl Acad Sci USA* 2001; 98: 629.
  69. Haffner AC, Tassis A, Zepfer K, et al. Expression of cancer/testis antigens in cutaneous T cell lymphomas. *Int J Cancer* 2002; 97: 668.
  70. Nikolova M, Bagot M, Boumsell L, Bensussan A. Identification of cell surface molecules characterizing human cutaneous T-cell lymphomas. *Leuk Lymphoma* 2002; 43: 741.
  71. Lessin SR, Vowels BR, Rook AH. Th2 cytokine profile in cutaneous T-cell lymphoma. *J Invest Dermatol* 1995; 105: 855.
  72. Mitchell TJ, Whittaker SJ, John S. Dysregulated expression of COOH-terminally truncated Stat5 and loss of IL2-inducible Stat5-dependent gene expression in Sezary Syndrome. *Cancer Res* 2003; 63: 9048.
  73. Wang SM, Coljee VW, Pignolo RJ, Rotenberg MO, Cristofalo VJ, Sierra F. Cloning of the human twist gene: its expression is retained in adult mesodermally-derived tissues. *Gene* 1997; 187: 83.
  74. Spicer DB, Rhee J, Cheung WL, Lassar AB. Inhibition of myogenic bHLH and MEF2 transcription factors by the bHLH protein Twist. *Science* 1996; 272: 1476.
  75. Maestro R, Dei Tos AP, Hamamori Y, et al. Twist is a potential oncogene that inhibits apoptosis. *Genes Dev* 1999; 13: 2207.
  76. Lai KO, Chen Y, Po HM, Lok KC, Gong K, Ip NY. Identification of the Jak/Stat proteins as novel downstream targets of EphA4 signaling in muscle: implications in the regulation of acetylcholinesterase expression. *J Biol Chem* 2004; 279: 13383.
  77. Eriksen KW, Kalsoft K, Mikkelsen G, et al. Constitutive STAT3-activation in Sezary syndrome: typhostin AG490 inhibits STAT3-activation, interleukin-2 receptor expression and growth of leukemic Sezary cells. *Leukemia* 2001; 15: 787.
  78. van Doorn R, Dijkman R, Vermeer MH, et al. Aberrant expression of the tyrosine kinase receptor EphA4 and the transcription factor twist in Sezary syndrome identified by gene expression analysis. *Cancer Res* 2004; 64: 5578.
  79. Kari L, Loboda A, Nebozhyn M, et al. Classification and prediction of survival in patients with the leukemic phase of cutaneous T cell lymphoma. *J Exp Med* 2003; 197: 1477.
  80. Raychaudhuri S, Sutphin PD, Chang JT, Altman RB. Basic microarray analysis: grouping and feature reduction. *Trends Biotechnol* 2001; 19: 189.
  81. Kadin ME. The spectrum of Ki-1<sup>+</sup> cutaneous lymphomas. *Curr Probl Dermatol* 1990; 19: 132.
  82. Kaudewitz P, Burg G. Lymphomatoid papulosis and Ki-1 (CD30)-positive cutaneous large cell lymphomas. *Semin Diagn Pathol* 1991; 8: 117.
  83. Willemze R, Beljaards RC. Spectrum of primary cutaneous CD30 (Ki-1)-positive lymphoproliferative disorders. A proposal for classification and guidelines for management and treatment. *J Am Acad Dermatol* 1993; 28: 973.
  84. Paulli M, Berti E, Rosso R, et al. CD30/Ki-1-positive lymphoproliferative disorders of the skin – clinicopathologic correlation and statistical analysis of 86 cases: a multicentric study from the European Organization for Research and Treatment of Cancer Cutaneous Lymphoma Project Group. *J Clin Oncol* 1995; 13: 1343.
  85. Drews R, Samel A, Kadin ME. Lymphomatoid papulosis and anaplastic large cell lymphomas of the skin. *Semin Cutan Med Surg* 2000; 19: 109.
  86. Bekkenk MW, Geelen FA, van Voorst Vader PC, et al. Primary and secondary cutaneous CD30(+) lymphoproliferative disorders: a report from the Dutch Cutaneous Lymphoma Group on the long-term follow-up data of 219 patients and guidelines for diagnosis and treatment. *Blood* 2000; 95: 3653.
  87. Macaulay WL. Lymphomatoid papulosis. A continuing self-healing eruption, clinically benign – histologically malignant. *Arch Dermatol* 1968; 97: 23.
  88. LeBoit PE. Lymphomatoid papulosis and cutaneous CD30<sup>+</sup> lymphoma. *Am J Dermatopathol* 1996; 18: 221.
  89. Willemze R, Meyer CJ, Van VW, Scheffer E. The clinical and histological spectrum of lymphomatoid papulosis. *Br J Dermatol* 1982; 107: 131.
  90. El Shabrawi-Caelen L, Kerl H, Cerroni L. Lymphomatoid papulosis: reappraisal of clinicopathologic presentation and classification into subtypes A, B, and C. *Arch Dermatol* 2004; 140: 441.
  91. Burg G, Hoffmann FG, Nikolowski J, Schmoeckel C, Braun FO, Stunkel K. Lymphomatoid papulosis: a cutaneous T-cell pseudolymphoma. *Acta Derm Venereol (Stockh)* 1981; 61: 491.
  92. Kaudewitz P, Stein H, Burg G, Mason M, Braun-Falco O. Detection of Sternberg-Reed and Hodgkin cell specific antigen on atypical cells in lymphomatoid papulosis (poster). Second International Conference on Malignant Lymphoma, Lugano, June 13–16, 1984, 1984.
  93. Kadin ME. Common activated helper-T-cell origin for lymphomatoid papulosis, mycosis fungoides, and some types of Hodgkin's disease. *Lancet* 1985; 2: 864.
  94. Kaudewitz P, Burg G, Stein H, Klepzig K, Mason DY, Braun FO. Monoclonal antibody patterns in lymphomatoid papulosis. *Dermatol Clin* 1985; 3: 749.
  95. Burg G, Hoffmann Fezer G, Nikolowski J, Schmoeckel C, Braun Falco O, Stunkel K. Lymphomatoid papulosis: a cutaneous T-cell pseudolymphoma. *Acta Derm Venereol* 1981; 61: 491.
  96. Kummer JA, Vermeer MH, Dukers D, Meijer CJ, Willemze R. Most primary cutaneous CD30-positive lymphoproliferative disorders have a CD4-positive cytotoxic T-cell phenotype. *J Invest Dermatol* 1997; 109: 636.
  97. Cepeda LT, Pieretti M, Chapman SF, Horenstein MG. CD30-positive atypical lymphoid cells in common non-neoplastic cutaneous infiltrates rich in neutrophils and eosinophils. *Am J Surg Pathol* 2003; 27: 912.
  98. Beylot-Barry M, Groppi A, Vergier B, Pulford K, Merlio JP. Characterization of t(2;5) reciprocal transcripts and genomic breakpoints in CD30<sup>+</sup> cutaneous lymphoproliferations. *Blood* 1998; 91: 4668.
  99. Beylot-Barry M, Lamant L, Vergier B, et al. Detection of t(2;5)(p23;q35) translocation by reverse transcriptase polymerase chain reaction and in situ hybridization in CD30-positive primary cutaneous lymphoma and lymphomatoid papulosis. *Am J Pathol* 1996; 149: 483.
  100. Sarris AH, Luthra R, Papadimitracopoulou V, et al. Long-range amplification of genomic DNA detects the t(2;5)(p23;q35) in anaplastic large-cell lymphoma, but not in other non-Hodgkin's lymphomas, Hodgkin's disease, or lymphomatoid papulosis. *Ann Oncol* 1997; 8: 59.
  101. Gellrich S, Wernicke M, Wilks A, et al. The cell infiltrate in lymphomatoid papulosis comprises a mixture of polyclonal large atypical cells (CD30-positive) and smaller

- monoclonal T cells (CD30-negative). *J Invest Dermatol* 2004; 122: 859.
102. Gellrich S, Wilks A, Lukowsky A, et al. T cell receptor-gamma gene analysis of CD30<sup>+</sup> large atypical individual cells in CD30<sup>+</sup> large primary cutaneous T cell lymphomas. *J Invest Dermatol* 2003; 120: 670.
  103. Gallardo F, Costa C, Bellosillo B, et al. Lymphomatoid papulosis associated with mycosis fungoides: clinicopathological and molecular studies of 12 cases. *Acta Derm Venereol* 2004; 84: 463.
  104. Stein H, Foss HD, Durkop H, et al. CD30(+) anaplastic large cell lymphoma: a review of its histopathologic, genetic, and clinical features. *Blood* 2000; 96: 3681.
  105. Foss HD, Marafioti T, Stein H. [The many faces of anaplastic large cell lymphoma]. *Pathologe* 2000; 21: 124.
  106. de Bruin PC, Beljaards RC, van Heerde P, et al. Differences in clinical behaviour and immunophenotype between primary cutaneous and primary nodal anaplastic large cell lymphoma of T-cell or null cell phenotype. *Histopathology* 1993; 23: 127.
  107. McCluggage WG, Walsh MY, Bharucha H. Anaplastic large cell malignant lymphoma with extensive eosinophilic or neutrophilic infiltration. *Histopathology* 1998; 32: 110.
  108. Burg G, Kempf W, Kazakov DV, et al. Pyogenic lymphoma of the skin: a peculiar variant of primary cutaneous neutrophil-rich CD30<sup>+</sup> anaplastic large-cell lymphoma. Clinicopathological study of four cases and review of the literature. *Br J Dermatol* 2003; 148: 580.
  109. Lin JH, Lee JY. Primary cutaneous CD30 anaplastic large cell lymphoma with keratoacanthoma-like pseudocarcinomatous hyperplasia and marked eosinophilia and neutrophilia. *J Cutan Pathol* 2004; 31: 458.
  110. Kaudewitz P, Stein H, Dallenbach F, et al. Primary and secondary cutaneous Ki-1<sup>+</sup> (CD30<sup>+</sup>) anaplastic large cell lymphomas. Morphologic, immunohistologic, clinical-characteristics. *Am J Pathol* 1989; 135: 359.
  111. Bijl JJ, Rieger E, van Oostreen JW, et al. HOXC4, HOXC5, and HOXC6 expression in primary cutaneous lymphoid lesions. High expression of HOXC5 in anaplastic large-cell lymphomas. *Am J Pathol* 1997; 151: 1067–1074.
  112. Macgrogan G, Vergier B, Dubus P, et al. CD30-positive cutaneous large cell lymphomas. A comparative study of clinicopathologic and molecular features of 16 cases. *Am J Clin Pathol* 1996; 105: 440.
  113. Gascoyne RD, Aoun P, Wu D, et al. Prognostic significance of anaplastic lymphoma kinase (ALK) protein expression in adults with anaplastic large cell lymphoma. *Blood* 1999; 93: 3913.
  114. Kapur S, Tiemann M, Menke MA, Schubert C, Parwaresch R. The role of p53 and anaplastic lymphoma kinase genes in the progression of cutaneous CD30(+) lymphoproliferative diseases. *Indian J Med Res* 2005; 121: 46.
  115. Thompson MA, Stumph J, Henrickson SE, et al. Differential gene expression in anaplastic lymphoma kinase-positive and anaplastic lymphoma kinase-negative anaplastic large cell lymphomas. *Hum Pathol* 2005; 36: 494.
  116. Mehregan DA, Su WP, Kurtin PJ. Subcutaneous T-cell lymphoma: a clinical, histopathologic, and immunohistochemical study of six cases. *J Cutan Pathol* 1994; 21: 110.
  117. Salhany KE, Macon WR, Choi JK, et al. Subcutaneous panniculitis-like T-cell lymphoma: clinicopathologic, immunophenotypic, and genotypic analysis of alpha/beta and gamma/delta subtypes. *Am J Surg Pathol* 1998; 22: 881.
  118. Kumar S, Krenacs L, Medeiros J, et al. Subcutaneous panniculitic T-cell lymphoma is a tumor of cytotoxic T lymphocytes. *Hum Pathol* 1998; 29: 397.
  119. Salhany KE, Cousar JB, Greer JP, Casey TT, Fields JP, Collins RD. Transformation of cutaneous T cell lymphoma to large cell lymphoma. A clinicopathologic and immunologic study. *Am J Pathol* 1988; 132: 265.
  120. Hoque SR, Child FJ, Whittaker SJ, et al. Subcutaneous panniculitis-like T-cell lymphoma: a clinicopathological, immunophenotypic and molecular analysis of six patients. *Br J Dermatol* 2003; 148: 516.
  121. Toro JR, Liewehr DJ, Pabby N, et al. Gamma-delta T-cell phenotype is associated with significantly decreased survival in cutaneous T-cell lymphoma. *Blood* 2003; 101: 3407.
  122. Burg G, Dummer R, Wilhelm M, et al. A subcutaneous delta-positive T-cell lymphoma that produces interferon gamma. *N Engl J Med* 1991; 325: 1078.
  123. Gonzalez CL, Medeiros LJ, Brazier RM, Jaffe ES. T-cell lymphoma involving subcutaneous tissue. A clinicopathologic entity commonly associated with hemophagocytic syndrome. *Am J Surg Pathol* 1991; 15: 17.
  124. Takimoto Y, Imanaka F, Sasaki N, Nanba K, Kimura N. Gamma/delta T cell lymphoma presenting in the subcutaneous tissue and small intestine in a patient with capillary leak syndrome. *Int J Hematol* 1998; 68: 183.
  125. Weenig RH, Ng CS, Pernicaro C. Subcutaneous panniculitis-like T-cell lymphoma: an elusive case presenting as lipomembranous panniculitis and a review of 72 cases in the literature. *Am J Dermatopathol* 2001; 23: 206.
  126. Park SB, Cho KH, Kim CW. Subcutaneous tissue involvement of CD30-positive large cell lymphoma. *J Dermatol* 1998; 25: 553.
  127. Jang KA, Choi JH, Sung KJ, et al. Primary CD56<sup>+</sup> nasal-type T/natural killer-cell subcutaneous panniculitic lymphoma: presentation as haemophagocytic syndrome. *Br J Dermatol* 1999; 141: 706.
  128. Takeshita M, Okamura S, Oshiro Y, et al. Clinicopathologic differences between 22 cases of CD56-negative and CD56-positive subcutaneous panniculitis-like lymphoma in Japan. *Hum Pathol* 2004; 35: 231.
  129. Craig AJ, Cualing H, Thomas G, Lamerson C, Smith R. Cytophagic histiocytic panniculitis – a syndrome associated with benign and malignant panniculitis: case comparison and review of the literature. *J Am Acad Dermatol* 1998; 39: 721.
  130. Bekkenk MW, Vermeer MH, Jansen PM, et al. Peripheral T-cell lymphomas unspecified presenting in the skin: analysis of prognostic factors in a group of 82 patients. *Blood* 2003; 102: 2213.
  131. Jaffe E, Ralfkiaer E. Subcutaneous panniculitis-like T-cell lymphoma. In: Jaffe ES, Harris NL, Stein H Vardiman JW, eds. WHO classification of tumours. Pathology and genetics of tumours of haematopoietic and lymphoid tissues. Lyon: IARC Press, 2001, 212.
  132. de Wolf-Peters C, Achten R. Gammadelta T-cell lymphomas: a homogeneous entity? *Histopathology* 2000; 36: 294.
  133. Jaffe ES, Krenacs L Raffeld M. Classification of cytotoxic T-cell and natural killer cell lymphomas. *Semin Hematol* 2003; 40: 175.
  134. Arnulf B, Copie-Bergman C, Delfau-Larue MH, et al. Nonhepatosplenic gammadelta T-cell lymphoma: a subset of cytotoxic lymphomas with mucosal or skin localization. *Blood* 1998; 91: 1723.
  135. Munn SE, McGregor JM, Jones A, et al. Clinical and pathological heterogeneity in cutaneous gamma-delta T-cell lymphoma: a report of three cases and a review of the literature. *Br J Dermatol* 1996; 135: 976.



136. Ralfkiaer E, Wolff-Sneedorff A, Thomsen K, Geisler C, Veilgaard G. T-cell receptor gamma/delta-positive peripheral T-cell lymphomas presenting in the skin: a clinical, histological and immunophenotypic study. *Exp Dermatol* 1992; 1: 31.
137. Massone C, Chott A, Metzger D, et al. Subcutaneous, blastic natural killer (NK), NK/T-cell, and other cytotoxic lymphomas of the skin: a morphologic, immunophenotypic, and molecular study of 50 patients. *Am J Surg Pathol* 2004; 28: 719.
138. Krenacs L, Smyth MJ, Bagdi E, et al. The serine protease granzyme M is preferentially expressed in NK-cell, gamma delta T-cell, and intestinal T-cell lymphomas: evidence of origin from lymphocytes involved in innate immunity. *Blood* 2003; 101: 3590.
139. Przybylski GK, Wu H, Macon WR, et al. Hepatosplenic and subcutaneous panniculitis-like gamma/delta T cell lymphomas are derived from different Vdelta subsets of gamma/delta T lymphocytes. *J Mol Diagn* 2000; 2: 11.
140. Avinoach I, Halevy S, Argov S, Sacks M. Gamma/delta T-cell lymphoma involving the subcutaneous tissue and associated with a hemophagocytic syndrome. *Am J Dermatopathol* 1994; 16: 426.
141. Berti E, Tomasini D, Vermeer MH, Meijer CJ, Alessi E, Willemze R. Primary cutaneous CD8-positive epidermotropic cytotoxic T cell lymphomas. A distinct clinicopathological entity with an aggressive clinical behavior. *Am J Pathol* 1999; 155: 483.
142. Fujiwara Y, Abe Y, Kuyama M, et al. CD8<sup>+</sup> cutaneous T-cell lymphoma with pagetoid epidermotropism and angiocentric and angiodestructive infiltration. *Arch Dermatol* 1990; 126: 801.
143. Agnarsson BA, Vonderheid EC, Kadin ME. Cutaneous T cell lymphoma with suppressor/cytotoxic (CD8) phenotype: identification of rapidly progressive and chronic subtypes. *J Am Acad Dermatol* 1990; 22: 569.
144. Friedmann D, Wechsler J, Delfau MH, et al. Primary cutaneous pleomorphic small T-cell lymphoma. A review of 11 cases. The French Study Group on Cutaneous Lymphomas. *Arch Dermatol* 1995; 131: 1009.
145. Scarabello A, Leinweber B, Ardigo M, et al. Cutaneous lymphomas with prominent granulomatous reaction: a potential pitfall in the histopathologic diagnosis of cutaneous T- and B-cell lymphomas. *Am J Surg Pathol* 2002; 26: 1259.
146. Kim YC, Vanderstee DP. Primary cutaneous pleomorphic small/medium-sized T-cell lymphoma in a young man. *Br J Dermatol* 2001; 144: 903.
147. Spencer J, Perry ME, Dunn-Walters DK. Human marginal-zone B cells. *Immunol Today* 1998; 19: 421.
148. Tomaszewski MM, Abbondanzo SL, Lupton GP. Extranodal marginal zone B-cell lymphoma of the skin: a morphologic and immunophenotypic study of 11 cases. *Am J Dermatopathol* 2000; 22: 205.
149. de la Fouchardiere A, Balme B, Chouvet B, et al. Primary cutaneous marginal zone B-cell lymphoma: a report of 9 cases. *J Am Acad Dermatol* 1999; 41: 181.
150. Cerroni L, Signoretti S, Hoffer G, et al. Primary cutaneous marginal zone B-cell lymphoma: a recently described entity of low-grade malignant cutaneous B-cell lymphoma. *Am J Surg Pathol* 1997; 21: 1307.
151. Servitje O, Gallardo F, Estrach T, et al. Primary cutaneous marginal zone B-cell lymphoma: a clinical, histopathological, immunophenotypic and molecular genetic study of 22 cases. *Br J Dermatol* 2002; 147: 1147.
152. LeBoit PE, McNutt NS, Reed JA, Jacobson M, Weiss LM. Primary cutaneous immunocytoma. A B-cell lymphoma that can easily be mistaken for cutaneous lymphoid hyperplasia. *Am J Surg Pathol* 1994; 18: 969.
153. Rijlaarsdam JU, van der Putte SC, Berti E, et al. Cutaneous immunocytomas: a clinicopathologic study of 26 cases. *Histopathology* 1993; 23: 117.
154. de Leval L, Harris NL, Longtine J, Ferry JA, Duncan LM. Cutaneous b-cell lymphomas of follicular and marginal zone types: use of Bcl-6, CD10, Bcl-2, and CD21 in differential diagnosis and classification. *Am J Surg Pathol* 2001; 25: 732.
155. Hoefnagel JJ, Vermeer MH, Jansen PM, Fleuren GJ, Meijer CJ, Willemze R. Bcl-2, Bcl-6 and CD10 expression in cutaneous B-cell lymphoma: further support for a follicle centre cell origin and differential diagnostic significance. *Br J Dermatol* 2003; 149: 1183.
156. Child FJ, Woolford AJ, Calonje E, Russell-Jones R, Whittaker SJ. Molecular analysis of the immunoglobulin heavy chain gene in the diagnosis of primary cutaneous B cell lymphoma. *J Invest Dermatol* 2001; 117: 984.
157. Li C, Inagaki H, Kuo TT, Hu S, Okabe M, Eimoto T. Primary cutaneous marginal zone B-cell lymphoma: a molecular and clinicopathologic study of 24 asian cases. *Am J Surg Pathol* 2003; 27: 1061.
158. Streubel B, Lamprecht A, Dierlamm J, et al. T(14;18) (q32;q21) involving IGH and MALT1 is a frequent chromosomal aberration in MALT lymphoma. *Blood* 2003; 101: 2335.
159. Gronbaek K, Ralfkiaer E, Kalla J, Skovgaard GL, Guldborg P. Infrequent somatic Fas mutations but no evidence of Bcl10 mutations or t(11;18) in primary cutaneous MALT-type lymphoma. *J Pathol* 2003; 201: 134.
160. Garcia CF, Weiss LM, Warnke RA, Wood GS. Cutaneous follicular lymphoma. *Am J Surg Pathol* 1986; 10: 454.
161. Pimpinelli N, Santucci M, Bosi A, et al. Primary cutaneous follicular centre-cell lymphoma – a lymphoproliferative disease with favourable prognosis. *Clin Exp Dermatol* 1989; 14: 12.
162. Rijlaarsdam JU, Meijer CJ, Willemze R. Differentiation between lymphadenosis benigna cutis and primary cutaneous follicular center cell lymphomas. A comparative clinicopathologic study of 57 patients. *Cancer* 1990; 65: 2301.
163. Berti E, Alessi E, Caputo R, Gianotti R, Delia D, Vezzoni P. Reticulohistiocytoma of the dorsum. *J Am Acad Dermatol* 1988; 19: 259.
164. Goodlad JR, MacPherson S, Jackson R, Batstone P, White J. Extranodal follicular lymphoma: a clinicopathological and genetic analysis of 15 cases arising at non-cutaneous extranodal sites. *Histopathology* 2004; 44: 268.
165. Sander CA, Flaig MJ. Morphologic spectrum of cutaneous B-cell lymphomas. *Dermatol Clin* 1999; 17: 593.
166. Cerroni L, Arzberger E, Putz B, et al. Primary cutaneous follicle center cell lymphoma with follicular growth pattern. *Blood* 2000; 95: 3922.
167. Cerroni L, Volkenandt M, Rieger E, Soyer HP, Kerl H. bcl-2 protein expression and correlation with the interchromosomal 14;18 translocation in cutaneous lymphomas and pseudolymphomas. *J Invest Dermatol* 1994; 102: 231.
168. Bergman R, Kurtin PJ, Gibson LE, Hull PR, Kimlinger TK, Schroeter AL. Clinicopathologic, immunophenotypic, and molecular characterization of primary cutaneous follicular B-cell lymphoma. *Arch Dermatol* 2001; 137: 432.
169. Mirza I, Macpherson N, Paproski S, et al. Primary cutaneous follicular lymphoma: an assessment of clinical, histopathologic, immunophenotypic, and molecular features. *J Clin Oncol* 2002; 20: 647.

## WHO/EORTC classification of cutaneous lymphomas

170. Child FJ, Russell-Jones R, Woolford AJ, et al. Absence of the t(14;18) chromosomal translocation in primary cutaneous B-cell lymphoma. *Br J Dermatol* 2001; 144: 735.
171. Child FJ, Scarisbrick JJ, Calonje E, Orchard G, Russell-Jones R, Whittaker SJ. Inactivation of tumor suppressor genes p15(INK4b) and p16(INK4a) in primary cutaneous B cell lymphoma. *J Invest Dermatol* 2002; 118: 941.
172. Mao X, Lillington D, Child F, Russell-Jones R, Young B, Whittaker S. Comparative genomic hybridization analysis of primary cutaneous B-cell lymphomas: identification of common genomic alterations in disease pathogenesis. *Genes Chromosomes Cancer* 2002; 35: 144.
173. Hallermann C, Kaune KM, Siebert R, et al. Chromosomal aberration patterns differ in subtypes of primary cutaneous B cell lymphomas. *J Invest Dermatol* 2004; 122: 1495.
174. Storz MN, van de Rijn M, Kim YH, Mraz-Gernhard S, Hoppe RT, Kohler S. Gene expression profiles of cutaneous B cell lymphoma. *J Invest Dermatol* 2003; 120: 865.
175. Vermeer MH, Geelen FA, van Haselen CW, et al. Primary cutaneous large B-cell lymphomas of the legs. A distinct type of cutaneous B-cell lymphoma with an intermediate prognosis. Dutch Cutaneous Lymphoma Working Group. *Arch Dermatol* 1996; 132: 1304.
176. Kodama K, Massone C, Chott A, Metze D, Kerl H, Cerroni L. Primary cutaneous large B-cell lymphomas. Clinicopathologic features, classification, and prognostic factors in a large series of patients. *Blood* 2005; 106: 2491–97.
177. Joly P, Charlotte F, Leibowitch M, et al. Cutaneous lymphomas other than mycosis fungoides: follow-up study of 52 patients. *J Clin Oncol* 1991; 9: 1994.
178. Paulli M, Viglio A, Vivenza D, et al. Primary cutaneous large B-cell lymphoma of the leg: histogenetic analysis of a controversial clinicopathologic entity. *Hum Pathol* 2002; 33: 937.
179. Rosenwald A, Wright G, Chan WC, et al. The use of molecular profiling to predict survival after chemotherapy for diffuse large-B-cell lymphoma. *N Engl J Med* 2002; 346: 1937.
180. Sundram U, Kim Y, Mraz-Gernhard S, Hoppe R, Natkunam Y, Kohler S. Expression of the bcl-6 and MUM1/IRF4 proteins correlate with overall and disease-specific survival in patients with primary cutaneous large B-cell lymphoma: a tissue microarray study. *J Cutan Pathol* 2005; 32: 227.
181. Gronbaek K, Moller PH, Nedergaard T, et al. Primary cutaneous B-cell lymphoma: a clinical, histological, phenotypic and genotypic study of 21 cases. *Br J Dermatol* 2000; 142: 913.
182. Geelen FA, Vermeer MH, Meijer CJ, et al. bcl-2 protein expression in primary cutaneous large B-cell lymphoma is site-related. *J Clin Oncol* 1998; 16: 2080.
183. Wechsler J, Bagot M. Primary cutaneous large B-cell lymphomas. *Semin Cutan Med Surg* 2000; 19: 130.
184. Hoefnagel JJ, Dijkman R, Basso K, et al. Distinct types of primary cutaneous large B-cell lymphoma identified by gene expression profiling. *Blood* 2005; 105: 3671.
185. Wright G, Tan B, Rosenwald A, Hurt EH, Wiestner A, Staudt LM. A gene expression-based method to diagnose clinically distinct subgroups of diffuse large B cell lymphoma. *Proc Natl Acad Sci USA* 2003; 100: 9991.
186. Uranishi M, Iida S, Sanda T, et al. Multiple myeloma oncogene 1 (MUM1)/interferon regulatory factor 4 (IRF4) up-regulates monokine induced by interferon-gamma (MIG) gene expression in B-cell malignancy. *Leukemia* 2005; 19: 1471–8.
187. Muris JJ, Cillessen SA, Vos W, et al. Immunohistochemical profiling of caspase signaling pathways predicts clinical response to chemotherapy in primary nodal diffuse large B-cell lymphomas. *Blood* 2005; 105: 2916.
188. Ramsay AD, Smith WJ, Isaacson PG. T-cell-rich B-cell lymphoma. *Am J Surg Pathol* 1988; 12: 433.
189. Dommann SN, Dommann SC, Zimmerman D, Dours ZM, Hassam S, Burg G. Primary cutaneous T-cell-rich B-cell lymphoma. A case report with a 13-year follow-up. *Am J Dermatopathol* 1995; 17: 618.
190. Kamarashev J, Dummer R, Schmidt MH, Kempf W, Kurrer MO, Burg G. Primary cutaneous T-cell-rich B-cell lymphoma and Hodgkin's disease in a patient with Gardner's syndrome. *Dermatology* 2000; 201: 362.
191. Pflieger L, Tappeiner J. Zur Kenntnis der systemisierten Endotheliomatose der cutanen Blutgefäesse (Reticuloendotheliomatose?). *Hautarzt* 1959; 10: 359.
192. Lazova R, Slater C, Scott G. Reactive angioendotheliomatosis. Case report and review of the literature. *Am J Dermatopathol* 1996; 18: 63.
193. McMenamin ME, Fletcher CD. Reactive angioendotheliomatosis: a study of 15 cases demonstrating a wide clinicopathologic spectrum. *Am J Surg Pathol* 2002; 26: 685.
194. Ferreri AJ, Campo E, Seymour JF, et al. Intravascular lymphoma: clinical presentation, natural history, management and prognostic factors in a series of 38 cases, with special emphasis on the 'cutaneous variant'. *Br J Haematol* 2004; 127: 173.
195. Perniciaro C, Winkelmann RK, Daoud MS, Su WP. Malignant angioendotheliomatosis is an angiotropic intravascular lymphoma. Immunohistochemical, ultrastructural, and molecular genetics studies. *Am J Dermatopathol* 1995; 17: 242.
196. Wick MR, Rocamora A. Reactive and malignant "angioendotheliomatosis": a discriminant clinicopathological study. *J Cutan Pathol* 1988; 15: 260.
197. Khoury H, Lestou VS, Gascoyne RD, et al. Multicolor karyotyping and clinicopathological analysis of three intravascular lymphoma cases. *Mod Pathol* 2003; 16: 716.
198. Khalidi HS, Brynes RK, Browne P, Koo CH, Battifora H, Medeiros LJ. Intravascular large B-cell lymphoma: the CD5 antigen is expressed by a subset of cases. *Mod Pathol* 1998; 11: 983.
199. Yegappan S, Coupland R, Arber DA, et al. Angiotropic lymphoma: an immunophenotypically and clinically heterogeneous lymphoma. *Mod Pathol* 2001; 14: 1147.
200. Kanda M, Suzumiya J, Ohshima K, Tamura K, Kikuchi M. Intravascular large cell lymphoma: clinicopathological, immuno-histochemical and molecular genetic studies. *Leuk Lymphoma* 1999; 34: 569.
201. Kanda M, Suzumiya J, Ohshima K, et al. Analysis of the immunoglobulin heavy chain gene variable region of intravascular large B-cell lymphoma. *Virchows Arch* 2001; 439: 540.
202. Mao X, Orchard G, Lillington DM, Russell-Jones R, Young BD, Whittaker S. Genetic alterations in primary cutaneous CD30<sup>+</sup> anaplastic large cell lymphoma. *Genes Chromosomes Cancer* 2003; 37: 176.
203. Au WY, Shek WH, Nicholls J, Tse KM, Todd D, Kwong YL. T-cell intravascular lymphomatosis (angiotropic large cell lymphoma): association with Epstein-Barr viral infection. *Histopathology* 1997; 31: 563.
204. Au WY, Shek TW, Kwong YL. Epstein-Barr virus-related intravascular lymphomatosis. *Am J Surg Pathol* 2000; 24: 309.
205. Sepp N, Schuler G, Romani N, et al. "Intravascular lymphomatosis" (angioendotheliomatosis): evidence for a T-cell origin in two cases. *Hum Pathol* 1990; 21: 1051.
206. Ferry JA, Harris NL, Picker LJ, et al. Intravascular lymphomatosis (malignant angioendotheliomatosis). A B-cell neoplasm expressing surface homing receptors. *Mod Pathol* 1988; 1: 444.

## Burg et al.

207. Ponzoni M, Arrighi G, Gould VE, et al. Lack of CD 29 (beta1 integrin) and CD 54 (ICAM-1) adhesion molecules in intravascular lymphomatosis. *Hum Pathol* 2000; 31: 220.
208. Tsukadaira A, Okubo Y, Ogasawara H, et al. Chromosomal aberrations in intravascular lymphomatosis. *Am J Clin Oncol* 2002; 25: 178.
209. Abe S, Kumanishi T. [Molecular genetic analysis of intravascular malignant lymphomatosis cells]. *Rinsho Shinkeigaku* 1995; 35: 1473.
210. Petrella T, Comeau MR, Maynadie M, et al. 'Agranular CD4<sup>+</sup> CD56<sup>+</sup> hematodermic neoplasm' (blastic NK-cell lymphoma) originates from a population of CD56<sup>+</sup> precursor cells related to plasmacytoid monocytes. *Am J Surg Pathol* 2002; 26: 852.
211. Dummer R, Potoczna N, Haffner AC, Zimmermann DR, Gilardi S, Burg G. A primary cutaneous non-T, non-B CD4<sup>+</sup>, CD56<sup>+</sup> lymphoma. *Arch Dermatol* 1996; 132: 550.
212. Kato N, Yasukawa K, Kimura K, et al. CD2<sup>-</sup> CD4<sup>+</sup> CD56<sup>+</sup> hematodermic/hematolymphoid malignancy. *J Am Acad Dermatol* 2001; 44: 231.
213. Khoury JD, Medeiros LJ, Manning JT, Sulak LE, Bueso-Ramos C, Jones D. CD56(+) TdT(+) blastic natural killer cell tumor of the skin: a primitive systemic malignancy related to myelomonocytic leukemia. *Cancer* 2002; 94: 2401.
214. Gillot X. Thèse pour le doctorat en médecine. Etude sur une affection de la peau décrite sous le nom de Mycosis fongoïde, 1869.