



UNIVERSITÀ
DEGLI STUDI
FIRENZE

FLORE

Repository istituzionale dell'Università degli Studi di Firenze

Identification of patients with poorer survival in primary myelofibrosis based on the burden of JAK2V617F mutated allele.

Questa è la Versione finale referata (Post print/Accepted manuscript) della seguente pubblicazione:

Original Citation:

Identification of patients with poorer survival in primary myelofibrosis based on the burden of JAK2V617F mutated allele / Guglielmelli P; Barosi G; Specchia G; Rambaldi A; Lo Coco F; Antonioli E; Pieri L; Pancrazzi A; Ponziani V; Delaini F; Longo G; Ammatuna E; Liso V; Bosi A; Barbui T; Vannucchi AM.. - In: BLOOD. - ISSN 0006-4971. - STAMPA. - 114:(2009), pp. 1477-1483.

Availability:

The webpage <https://hdl.handle.net/2158/370720> of the repository was last updated on

Terms of use:

Open Access

La pubblicazione è resa disponibile sotto le norme e i termini della licenza di deposito, secondo quanto stabilito dalla Policy per l'accesso aperto dell'Università degli Studi di Firenze (<https://www.sba.unifi.it/upload/policy-oa-2016-1.pdf>)

Publisher copyright claim:

La data sopra indicata si riferisce all'ultimo aggiornamento della scheda del Repository FloRe - The above-mentioned date refers to the last update of the record in the Institutional Repository FloRe

(Article begins on next page)

blood

2009 114: 1477-1483
Prepublished online Jun 23, 2009;
doi:10.1182/blood-2009-04-216044

Identification of patients with poorer survival in primary myelofibrosis based on the burden of JAK2V617F mutated allele

Paola Guglielmelli, Giovanni Barosi, Giordina Specchia, Alessandro Rambaldi, Francesco Lo Coco, Elisabetta Antonioli, Lisa Pieri, Alessandro Pancrazzi, Vanessa Ponziani, Federica Delaini, Giovanni Longo, Emanuele Ammatuna, Vincenzo Liso, Alberto Bosi, Tiziano Barbui and Alessandro M. Vannucchi

Updated information and services can be found at:

<http://bloodjournal.hematologylibrary.org/cgi/content/full/114/8/1477>

Articles on similar topics may be found in the following *Blood* collections:

[Free Research Articles](#) (714 articles)

[Myeloid Neoplasia](#) (119 articles)

[Clinical Trials and Observations](#) (2666 articles)

Information about reproducing this article in parts or in its entirety may be found online at:

http://bloodjournal.hematologylibrary.org/misc/rights.dtl#repub_requests

Information about ordering reprints may be found online at:

<http://bloodjournal.hematologylibrary.org/misc/rights.dtl#reprints>

Information about subscriptions and ASH membership may be found online at:

<http://bloodjournal.hematologylibrary.org/subscriptions/index.dtl>

Blood (print ISSN 0006-4971, online ISSN 1528-0020), is published semimonthly by the American Society of Hematology, 1900 M St, NW, Suite 200, Washington DC 20036.

Copyright 2007 by The American Society of Hematology; all rights reserved.



Identification of patients with poorer survival in primary myelofibrosis based on the burden of *JAK2V617F* mutated allele

Paola Guglielmelli,¹ Giovanni Barosi,² Giorgia Specchia,³ Alessandro Rambaldi,⁴ Francesco Lo Coco,⁵ Elisabetta Antonioli,¹ Lisa Pieri,¹ Alessandro Pancrazzi,¹ Vanessa Ponziani,¹ Federica Delaini,⁴ Giovanni Longo,¹ Emanuele Ammatuna,⁵ Vincenzo Liso,³ Alberto Bosi,¹ Tiziano Barbui,⁴ and Alessandro M. Vannucchi¹

¹Unità Funzionale di Ematologia, Dipartimento di Area Critica, Università di Firenze, and Istituto Toscano Tumori, Firenze; ²Unità di Epidemiologia Clinica, Fondazione Istituti di Ricovero e Cura a Carattere Scientifico, Policlinico S Matteo, Pavia; ³Dipartimento di Ematologia, Università di Bari, Bari; ⁴Divisione di Ematologia, Ospedali Riuniti, Bergamo; and ⁵Dipartimento di Biopatologia e Diagnostica per Immagini, Università Tor Vergata, Rome, Italy

A total of 186 patients with primary myelofibrosis (PMF) were genotyped for *JAK2V617F* at diagnosis aimed at analyzing the correlation of mutational status and mutated allele burden with outcome variables, including time to anemia, leukocytosis, leukopenia, thrombocytopenia, massive splenomegaly, leukemia, and with overall survival. A total of 127 *JAK2V617F*-mutated patients (68% of whole series) were divided in quartiles of *V617F* allele burden. After a median

follow-up of 17.2 months, 23 patients died, 15 because of leukemia. A *JAK2V617F* mutated status did not impact on the rate of leukemia transformation or overall survival. Patients in the lower quartile had shorter time to anemia and leukopenia and did not progress to large splenomegaly. Furthermore, survival was significantly reduced in the lower quartile compared with upper quartiles and *JAK2* wild-type patients. In multivariate analysis, factors associated with reduced sur-

vival were age, a blast count more than 1%, and a *JAK2V617F* burden within first quartile. Causes of death in the lower quartile were represented mainly by systemic infections. We conclude that a low *JAK2V617F* allele burden at diagnosis is preferentially associated with a myelo-depletive rather than myeloproliferative phenotype and represents an independent factor associated with shortened survival in patients with PMF. (Blood. 2009;114:1477-1483)

Introduction

Sixty percent of patients with primary myelofibrosis (PMF) present an acquired recurrent mutation located in exon 14 of *JAK2* (*JAK2V617F*)¹⁻⁴; an additional 8% to 10% harbor a mutation at codon 515 in *MPL*, ie, W515L/K/A.⁵⁻⁷ These mutations represent a major criterion for diagnosis according to the 2008 World Health Organization classification of myeloid neoplasms⁸; however, they are not specific of this disorder and are shared by other Philadelphia chromosome-negative myeloproliferative neoplasms, which include polycythemia vera (PV), essential thrombocythemia (ET), and refractory anemia with ring sideroblasts and thrombocytosis.

A *JAK2V617F* mutated genotype as well as different *V617F* allele burden have been variably associated with unique hematologic and clinical characteristics in patients with PV or ET.⁹ In particular, it has been shown that increasing amounts of *V617F* allele corresponded to a more pronounced myeloproliferative phenotype favoring higher hemoglobin level and leukocyte count, delineating a "continuum" of the 2 disorders.¹⁰ Furthermore, the higher the mutational burden, the higher the risk of presenting aquagenic pruritus, developing splenomegaly, having thrombosis, requiring cytotoxic therapy, or transforming to post-PV/post-ET myelofibrosis.⁹

On the contrary, information in the setting of PMF is limited to a few studies that generally included patients genotyped at different times from diagnosis and used qualitative or semiquantitative assays¹¹⁻¹³; therefore, biases resulting from disease duration and previous therapy on hematologic and clinical phenotype and on patients' outcome, as well as the effects of different mutated allele

load, could not be adequately controlled. Only one recent study used a quantitative assay for measuring allele burden and evaluating its clinical correlates.¹⁴ The aim of current study was to analyze the prognostic relevance of *JAK2V617F* mutational status and of mutated allele burden in a population of newly diagnosed patients with PMF.

Methods

Patients

This study involved 186 patients with a diagnosis of PMF satisfying the 2008 World Health Organization criteria.¹⁵ Patients were eligible to enter the study if they had a blood sample collected for *JAK2V617F* genotyping at the time of diagnosis or within the following 6 months, before institution of any treatment. Patients who had *MPL* mutated were excluded from the analysis. Rules for collection, storage, and use of blood samples, and for data analysis, were approved by the local Institutional Review Board of the Azienda Ospedaliera Universitaria Careggi, and all subjects provided informed consent. This study was conducted in accordance with the Declaration of Helsinki. Conventional cytogenetic analysis was performed according to standard techniques using unstimulated bone marrow aspirates collected during diagnostic workup. Results were reported following the International System for Human Cytogenetic Nomenclature. According to recent literature,^{16,17} we considered as "favorable" cytogenetics the sole deletion of 13q, 20q, trisomy 9, as well as a normal diploid karyotype; "unfavorable" cytogenetics included the presence of abnormalities of chromosome 5 or 7 as well as complex karyotype with more than

Submitted April 10, 2009; accepted June 12, 2009. Prepublished online as *Blood* First Edition paper, June 23, 2009; DOI 10.1182/blood-2009-04-216044.

The publication costs of this article were defrayed in part by page charge

payment. Therefore, and solely to indicate this fact, this article is hereby marked "advertisement" in accordance with 18 USC section 1734.

© 2009 by The American Society of Hematology

3 abnormalities. No abnormality of chromosome 17, considered “very unfavorable,”¹⁶ was found in this series.

Purpose of the study

Our primary aim was to determine the correlations, if any, between a *JAK2V617F* mutated status or the burden of V617F allele and the rate of major outcome events, which included overall survival and transformation to acute leukemia. We also determined whether the mutated status or the burden of *JAK2* mutated allele correlated with specific laboratory parameters or clinical features, which included red blood cell indexes, leukocyte or platelet count, serum lactate dehydrogenase levels, peripheral blood (PB) CD34⁺ cell count, percentage of PB blasts, splenomegaly, constitutional symptoms, and the ranking of patients according to the Dupriez et al¹⁸ or the Cervantes et al prognostic scores.¹⁹ Constitutional symptoms included loss of 10% or more of body weight in the last 6 months, night sweats, or unexplained fever. Splenomegaly was measured as centimeters from the left costal margin (LCM); we considered 2 groups of patients who presented a spleen enlargement smaller or greater than 15 cm from LCM, respectively.

Determination of *JAK2V617F* allele burden

Measurement of *JAK2V617F* allele burden was performed in genomic DNA purified from granulocytes. Granulocytes were separated from PB by differential centrifugation over a Ficoll-Paque gradient, and contaminating erythrocytes were removed by hypotonic lysis; DNA was purified using the QIAmp DNA blood kit (QIAGEN GmbH) and quantified with NanoDrop technology.

The burden of mutated allele was measured by a quantitative real-time polymerase chain reaction (PCR) assay, using 40 ng DNA.²⁰ PCR amplification and detection were performed on an ABI Prism 7300 analyzer (Applied Biosystems) using the following cycling conditions: 10 minutes at 95°C followed by 50 cycles of 15 seconds at 95°C and 60 seconds at 60°C. Primer sequence was as follows: forward primer 5'-TTATGGACAACAGTCAAACAACAAT-3'; allele G reverse primer 5'-TTTACTTACTCTCGTCTCCACAGtC3' and allele T reverse primer 5'-TTTACTTACTCTCGTCTCCACAGtA-3' (lowercase nucleotides are locked nucleic acid-modified). 6-carboxyfluorescein-labeled minor groove binder probe sequence was: 5'-CTTGCTCATCATCTTGC-3'. All samples were analyzed in triplicate, and the amount of *JAK2V617F* allele was calculated by comparison with serial dilutions of mutated and wild-type DNA or with cloned *JAK2* plasmids. The mean of triplicate ΔCT determinations ($C_{T-JAK2V617F} - C_{T-JAK2WT}$) was used to calculate the percentage of mutated allele. Positive and negative controls were included in each assay; inter- and intra-assay variation was 3% and 5%, respectively.

Statistical analysis

The *JAK2* mutated allele burden was considered as an ordered categorical variable based on the following groups: 0% (*JAK2* wild-type patients), 1% to 25%, greater than 25% to 50%, greater than 50% to 75%, and greater than 75%.

We used the χ^2 or Fisher exact test (2 × 2 table) or χ^2 test for trend (larger contingency table), where appropriate, to compare the variables among the different patient groups that had been categorized according to mutational status or mutated allele burden. The analysis of continuous variables among the groups was performed using the Mann-Whitney U test (2 groups) or Kruskal-Wallis test with the use of Dunn method for multiple comparison. Kaplan-Meier analysis and the log-rank test were used to estimate overall survival. Cox regression models were used to perform multivariate analysis. A *P* value of less than .05 was considered to indicate statistical significance; all tests were 2-tailed. Data were processed using the SPSS software.

Results

A total of 186 patients with a diagnosis of PMF were genotyped with a quantitative assay for *JAK2V617F* mutation in granulocyte

DNA collected within 6 months from diagnosis, provided that no treatment, except for transfusional support, had been delivered in the meantime. A total of 127 patients were *JAK2V617F*-positive, giving an overall frequency of 68.3%; the median value of V617F allele burden was 54% (range, 5%-100%; Table 1). The distribution of mutated patients according to the V617F allele burden, shown in Table 2, corresponded to overall frequencies of 13.3% in the first quartile, 33.8% in the second, 24.4% in the third, and 28.3% in the fourth. Neither a *JAK2V617F* mutated status nor the categorized burden of mutated allele was correlated with age or sex (Tables 1-2). Results of cytogenetic analysis at diagnosis were available in 94 patients (50.5% of total population); 77 patients (81.9%) had favorable abnormalities (58 of whom presented a normal diploid karyotype), whereas 17 (18.1%) had unfavorable cytogenetic abnormalities (Table 3). Of the 26 informative patients who were *JAK2* wild-type, 6 patients (23.0%) had unfavorable cytogenetic abnormalities compared with 11 of 68 (16.2%) of those who were *JAK2V617F* mutated (*P* = .021).

Association of V617F mutated genotype or mutated allele burden with hematologic and clinical characteristics

At presentation, patients harboring a *JAK2V617F* mutation had significantly higher hemoglobin level (*P* < .001), leukocyte count (*P* = .009), and platelet count (*P* = .02) compared with those without the mutation (Table 1). Accordingly, the proportion of anemic patients (hemoglobin < 100 g/L) at presentation was significantly lower among *JAK2V617F* mutated patients compared with wild-types (22% vs 44%; *P* = .03). By considering the different categories of patients in dependence of the V617F allele burden, we observed a statistically significant correlation with leukocytosis (*P* = .03) and an almost significant trend for higher hemoglobin level (*P* = .05; Table 2). On the contrary, we found no impact of the mutated genotype or the mutated allele burden on other hematologic parameters, including peripheral blasts more than 1%, lactate dehydrogenase level, and circulating CD34⁺ cells. *JAK2V617F* mutated and wild-type patients did not differ from each other regarding the presence of a palpable splenomegaly greater than 15 cm from LCM or of constitutional symptoms; however, considering the group of mutated patients only, the frequency of those with large splenomegaly or constitutional symptoms increased significantly in relation to V617F allele burden (*P* = .003 and *P* = .04, respectively; Table 2).

To analyze whether the *JAK2V617F* mutational status correlated with prognostic scoring systems, we evaluated the distribution of patients in the different risk categories of the Dupriez et al¹⁸ or Cervantes et al¹⁹ score; however, because of the relatively low number of patients in the quartiles of V617F allele burden, we abstained from performing subgroup analysis. We observed that the number of *JAK2V617F* mutated patients in the low-risk category of the Dupriez et al¹⁸ scoring system was significantly greater compared with unmutated patients (*P* = .017), possibly the result of the higher hemoglobin level found in mutated patients; on the other hand, the distribution of patients in the 4 risk categories of the Cervantes et al¹⁹ score was independent of *JAK2V617F* mutational status.

Association of V617F mutated genotype or mutated allele burden with disease progression

To investigate the impact of *JAK2V617F* mutational status or categorized V617F allele burden on parameters associated with disease progression, we calculated the time elapsing from diagnosis

Table 1. Hematologic and clinical features at presentation in patients with PMF according to their *JAK2* V617F mutational status

Feature	<i>JAK2</i> WT	<i>JAK2</i> V617F	<i>P</i>
No.	59	127	
Median age, y (range)	57 (21-88)	62 (21-90)	.47
Median follow-up, mo (range)	27 (1-185)	29 (1-237)	.72
Females, no. (%)	18 (30.5)	51 (40.1)	.23
Median white blood cell count, $\times 10^9/L$ (range)	7.70 (1.9-90.78)	10.10 (3.01-16.15)	.009*
Median hemoglobin, g/L (range)	106 (46-190)	128.5 (54-180)	<.001*
Median platelets, $\times 10^9/L$ (range)	251 (8.0-1488)	386 (42-2011)	.02*
Blast >1 , no. (%)	16 (30.5)	38 (29.9)	.89
Median LDH, U/L (range)	704 (197-2970)	718 (120-2981)	.96
Median CD34 ⁺ cell, % (range)	0.25 (0.0-6.6)	0.19 (0-34)	.65
Median CD34 ⁺ cell, $\times 10^9/L$ (range)	18.84 (0.0-3417)	22 (0.3-800)	.77
Median <i>JAK2</i> V617F allele burden (range)	—	54 (5-100)	—
Splenomegaly >15 cm from LCM, no. (%)	11 (18.6)	26 (19.7)	.89
Constitutional symptoms, no. (%)	15 (25.4)	38 (29.9)	.15
Leukemia transformation, no. (%)	6 (10.1%)	9 (7.1)	.45
Deaths, no. (%)	8 (13.5)	15 (11.8)	.64
Lille score, no. (%)			
0	22 (37.2)	80 (63.0)	.017*
1	26 (44.0)	38 (30.0)	
2	11 (18.8)	9 (7.0)	
IWG-MRT score, no. (%)			
low	18 (30.5)	47 (37.0)	.60
Intermediate-1	15 (25.5)	32 (25.2)	
Intermediate-2	16 (27.1)	20 (15.7)	
High	10 (16.9)	28 (22.1)	

— indicates not applicable; and IWG-MRT, International Working Group for Myelofibrosis Research and Treatment.

*Statistically significant difference.

to hematologic and clinical outcome events, which included: changes in hematologic parameters not the result of cytoreductive therapy (anemia, defined as an hemoglobin steadily <100 g/L; leukopenia, as a leukocyte count $<4 \times 10^9/L$; leukocytosis, as a leukocyte count $>25 \times 10^9/L$; thrombocytopenia, as a platelet count $<100 \times 10^9/L$; the development of massive splenomegaly (considered as a spleen enlarged >15 cm from LCM in patients who presented smaller spleen size at diagnosis); and the evolution to acute leukemia. In the comparison of *JAK2*V617F mutated vs unmutated patients, we found that time to anemia or time to leukopenia was significantly longer ($P = .017$ and $P = .001$, respectively) in those harboring the mutation, whereas the statisti-

cal significance was not attained for other outcome events (Figure 1). The relative risk (RR) associated with a *JAK2* wild-type status was 1.64 (95% confidence interval [CI], 1.04-2.58) in case of anemia and 3.43 (95% CI, 1.59-7.41) in case of leukopenia compared with *JAK2*V617F mutated patients. In particular, we observed that a *JAK2*V617F mutated status did not represent a risk factor for transformation to acute leukemia (Figure 1); the RR was 1.57 (95% CI, 0.55-4.41) in *JAK2*V617F mutated compared with wild-type patients.

The relevance of different V617F allele burden on those outcomes was also evaluated. We found that patients in the lower quartile had significantly shorter time to anemia ($P = .02$) and

Table 2. Hematologic and clinical features at presentation in patients with PMF according to their *JAK2* V617F allele burden

Feature	<i>JAK2</i> V617F allele burden (%)				<i>P</i>
	1-25	26-50	51-75	76-100	
No.	17	43	31	36	
Median age, y (range)	58 (38-90)	63 (28-90)	65 (28-77)	60.31 (21-86)	.72
Median follow-up, mo (range)	16 (1-46)	24 (1-84)	26 (3-101)	45 (1-237)	<.001*
Females, no. (%)	4 (23.5)	21 (48.8)	12 (38.7)	14 (38.9)	.40
Median <i>JAK2</i> V617F allele burden (range)	15.5 (5-25)	41 (27-50)	66 (52-75)	90.5 (77-100)	—
Median white blood cell count, $\times 10^9/L$ (range)	10.26 (3.01-26.85)	9.47 (3.73-106.15)	9.40 (3.70-40.0)	13.40 (3.40-40.60)	.03*
Median hemoglobin, g/L (range)	128 (54-173)	122 (61-175)	134 (70-171)	136 (56-180)	.05*
Median platelets, $\times 10^9/L$ (range)	380.5 (45-1392)	386 (49-1089)	410 (42-1088)	379 (75-2011)	.95
Median LDH, U/L (range)	712 (193-2981)	745 (162-2497)	600 (120-1958)	700 (225-2166)	.83
Blast ≥ 1 , no. (%)	10 (58.8)	9 (33.3)	7 (35)	12 (50)	.21
Median CD34 ⁺ cell, % (range)	0.23 (0-3.1)	0.19 (0.01-34)	0.09 (0.02-3.43)	0.25 (0.02-1.32)	.98
Median CD34 ⁺ cell, $\times 10^9/L$ (range)	22.8 (1.4-244)	17.54 (0.26-800)	7.06 (2.72-476)	43.0 (3.0-130.0)	.93
Splenomegaly >15 cm from LCM, no. (%)	1 (5.8)	7 (16.2)	8 (25.8)	9 (25.0)	.003*
Constitutional symptoms, %	4 (23.5)	11 (25.6)	6 (19.3)	17 (47.2)	.04*
Leukemia transformation, no. (%)	0	4 (9.3)	2 (6.4)	3 (8.3)	.09
Deaths, no. (%)	6 (35.3)	7 (16.3)	1 (3.2)	1 (2.8)	.007*

— indicates not applicable; and LCM, left costal margin.

*Statistically significant difference.

Table 3. Distribution of cytogenetic abnormalities in patients with PMF according to their *JAK2* V617F allele burden

<i>JAK2</i> V617F allele burden, percentage	Patients with cytogenetic information available		Cytogenetic categories	
	No.	Percentage of total	Favorable, no. (%)	Unfavorable, no. (%)
0	26	44.0	20 (76.9)	6 (23.0)
1-25	8	47.0	7 (87.5)	1 (12.5)
26-50	17	39.5	15 (88.2)	2 (11.7)
51-75	17	54.8	12 (70.5)	5 (29.4)
76-100	26	72.2	23 (88.4)	3 (11.5)
Total	94	50.5	77 (81.9)	17 (18.1)

Favorable cytogenetic category included sole deletion of 13q or 20q or trisomy 9, and a normal karyotype; unfavorable cytogenetic category included abnormalities of chromosome 5 and/or 7 and complex cytogenetics.

leukopenia ($P = .004$) compared with upper quartiles (Figure 2); the corresponding RR values were 2.11 (95% CI, 1.1-4.43) for anemia and 6.84 (95% CI, 1.9-24.59) for leukopenia. We also found that time to large splenomegaly was significantly shorter in patients of the upper quartiles compared with the lower quartile ($P = .02$); only one of 17 patients in the lower quartile (5.8%) developed large splenomegaly during the follow-up compared with 16.2%, 25.8%, and 25.0% in the other quartiles (Figure 3; Table 2). On the other hand, there was no significant difference in the time to leukemia progression among the 4 quartiles ($P = .07$); however, it must be noted that none of the patients in the lower burden group evolved to leukemia (Figure 3; Table 2).

Association of V617F mutated genotype or mutated allele burden with disease outcome

After a median follow-up of 17.2 months, there were 23 patients (12.3%) who died, accounting for 13.5% and 11.8% of the *JAK2* wild-type and *JAK2*V617F mutated, respectively ($P = .64$; Table 1). Transformation to acute leukemia was the reason of death in

15 of them (65% of all deaths), accounting for 10.1% and 7.1% of *JAK2* wild-type and *JAK2*V617F mutated patients, respectively ($P = .078$). Duration of survival was similar in *JAK2* wild-type and *JAK2*V617F mutated patients ($P = .73$; Figure 3A). However, when we analyzed *JAK2*V617F mutated patients after stratification according to the burden of V617F allele, we found that survival was significantly shorter in the lower quartile compared with upper quartiles ($P = .001$, Figure 3B) as well as to *JAK2* wild-type patients ($P = .006$; Figure 3A). The percentage of patients in the lower quartile who died was as high as 35.3% compared with 16.3%, 3.2%, and 2.8% in upper quartiles, respectively ($P = .007$, Table 2). Causes of death in the lower quartile were represented by systemic infections or sepsis ($n = 5$) and multiorgan failure ($n = 1$), whereas no case of leukemia transformation was observed. The distribution of patients with favorable or unfavorable cytogenetic abnormalities according to their V617F allele burden is presented in Table 3; there was no statistically significant preferential clustering of unfavorable cytogenetic abnormalities in any of the different allele burden categories ($P = .073$, χ^2 test for trend).

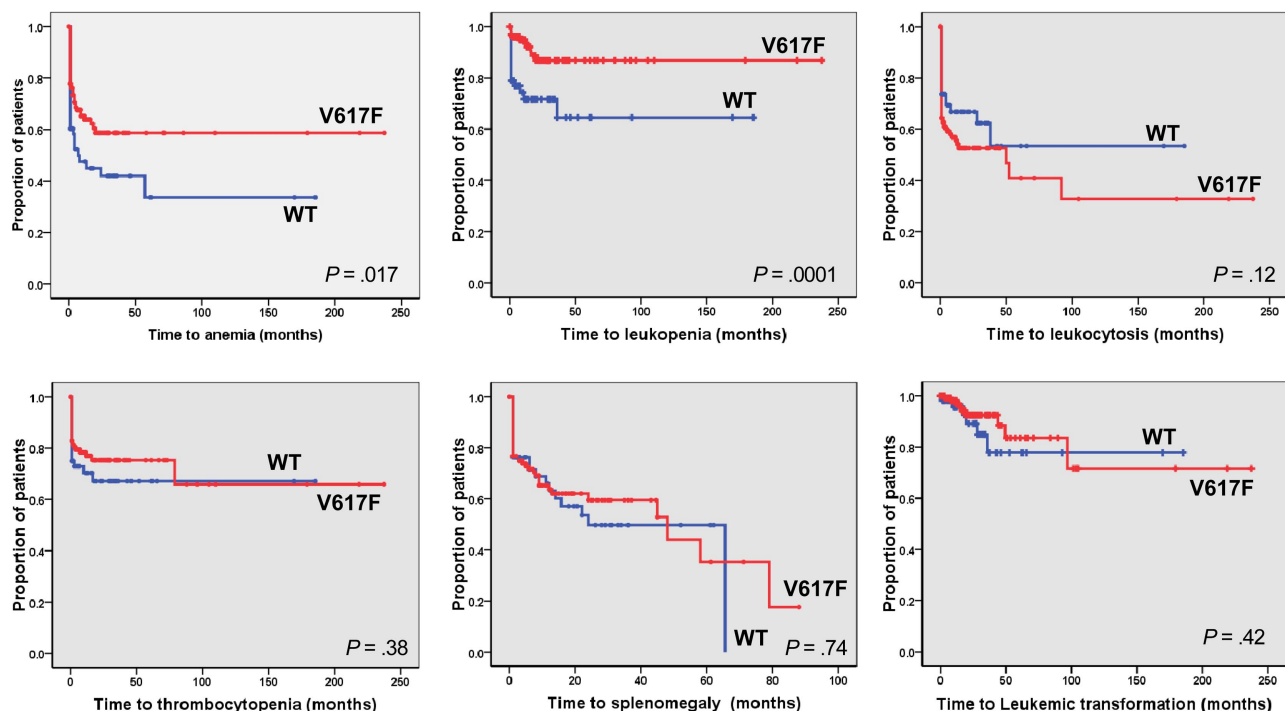
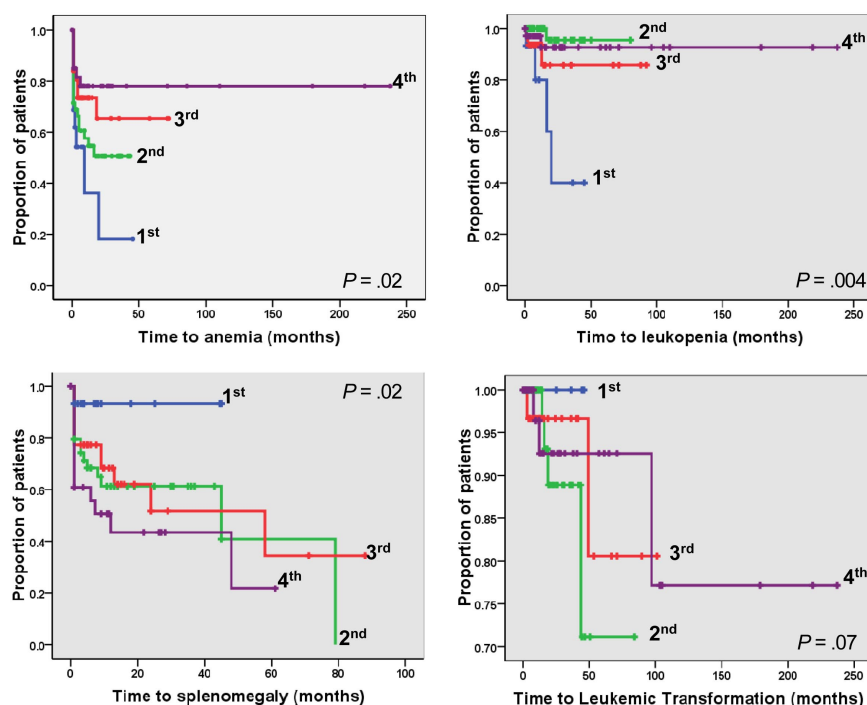


Figure 1. Kaplan-Meier analysis of the time to developing hematologic and clinical outcome events in PMF patients according to their *JAK2*V617F mutational status. The plots show time to anemia (hemoglobin < 100 g/L), leukopenia (leukocytes $< 4 \times 10^9$ /L), leukocytosis ($> 25 \times 10^9$ /L), thrombocytopenia ($< 100 \times 10^9$ /L), large splenomegaly (> 15 cm from left costal margin in patients presenting smaller spleen at diagnosis), and time to leukemic transformation. P values are shown inside each box. WT indicates *JAK2* wild-type patients; V617F, *JAK2*V617F mutated patients.

Figure 2. Kaplan-Meier analysis of the time to developing hematologic and clinical outcome events in *JAK2V617F* mutated PMF patients categorized according to quartiles of mutated allele burden. The plots show time to anemia, leukopenia, large splenomegaly, and leukemic transformation in the 4 quartiles of *JAK2V617F* allele burden. *P* values are shown inside each box. Quartiles of *V617F* allele burden were as follows: first, 1% to 25%; second, greater than 25% to 50%; third, greater than 50% to 75%; fourth, greater than 75% to 100%.



Variables that were associated with overall survival in univariate and multivariate analysis are listed in Table 4. Age, PB blast count, and a lower *V617F* allele burden maintained their significant association with survival in multivariate analysis; of note, there was an almost significant association of hemoglobin level (hazard ratio = 0.60; 95% CI, 0.36-1.01; *P* = .051) with survival.

Discussion

PMF is associated with poorer prognosis compared with other classic *BCR/ABL*-negative chronic myeloproliferative neoplasms because of a substantial reduction of life expectancy²¹ in the order of 31% compared with sex- and age-adjusted control population.²² However, survival may range from a few months to an excess of a decade, especially in younger patients.²³⁻²⁵ Therefore, identification of variables associated with prognosis is of considerable importance for driving therapeutic decisions, particularly in the case of hematopoietic stem cell transplantation, which is the only potentially curative therapeutic approach, yet still burdened by considerable morbidity and mortality.²⁶ Three main prognostic score systems have been developed. One is the so-called Lille score, which includes anemia and leukopenia or leukocytosis (leukocytes $< 4 \times 10^9/L$ or $> 30 \times 10^9/L$, respectively) as covariates to identify 3 distinct prognostic groups.¹⁸ The second one, developed at the Mayo Clinic, introduced thrombocytopenia ($< 100 \times 10^9/L$) and monocytosis ($> 10^9/L$) as additional variables resulting in an improved discriminatory power of the Lille score.²⁷ More recently, the International Working Group for Myelofibrosis Research and Treatment developed a new prognostic score system that included age (> 65 years), presence of constitutional symptoms, anemia (hemoglobin < 100 g/L), leukocytosis ($> 25 \times 10^9/L$), and blood blasts more than 1% and discriminated 4 categories of patients with significantly different median survival in the range of 27 to 135 months.¹⁹

The discovery of the *JAK2V617F* mutation and its association with distinct hematologic and clinical characteristics prompted

further research to assessing the predictive value of mutational status for the most common complications of PV or ET, ie, vascular events, and for prognosis and survival more in general. The latter aspect is particularly relevant for PMF because survival in PV or ET may be only slightly reduced compared with the normal population. The purpose of present study was to evaluate the consequence of *JAK2V617F* mutational status and *V617F* mutated allele burden on disease outcome in a population of newly diagnosed patients with PMF. Similar to observations made in PV or ET, also in this series of PMF patients, we found statistically significant association of the *JAK2V617F* mutated status with a more pronounced myeloproliferative phenotype favoring raised hemoglobin level and leukocyte count; accordingly, the time to developing anemia or leukopenia during the follow-up was significantly longer, and conversely the time to develop leukocytosis significantly shorter, in mutated patients. These findings were generally in agreement with results from the English¹¹ and GIMEMA¹³ groups and at variance with the Mayo Clinic series^{12,14} in which hemoglobin levels were not significantly modified by the presence of mutation.¹⁴ We also found that patients presenting anemia at diagnosis were significantly less frequent among *JAK2V617F* mutated than wild-type, and this probably accounted for more mutated patients to be included within the low-risk category according to Lille score system. However, the main outcome events of the study, namely, overall survival and leukemia transformation, were not appreciably different in the 2 categories of patients defined by their *JAK2V617F* genotype. These results are in line with the study from the Mayo Clinic¹⁴ but in disagreement with the results of the English study,¹¹ which reported a hazard ratio of shortened survival of 3.3 (95% CI, 1.26-8.68) in patients harboring the *V617F* allele.¹¹ In addition, in the GIMEMA study,¹³ overall survival was not influenced by a *JAK2V617F* mutated status, although a higher rate of leukemic transformation was observed; the reason for these discrepancies is not obvious and might be generically ascribed to series variability. Therefore, a conclusion of the present study is that a *JAK2V617F* mutated status per se does not reflect in a poorer prognosis in PMF.

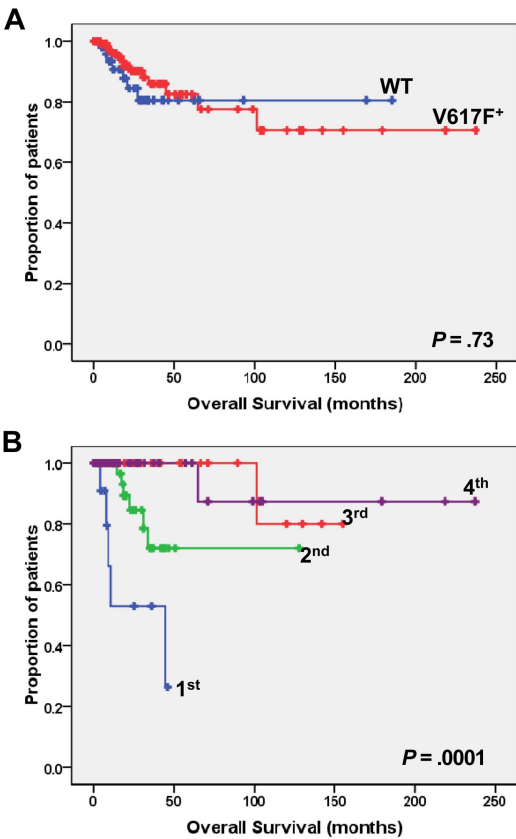


Figure 3. Kaplan-Meier analysis of overall survival in PMF patients. (A) The plot shows the overall survival in *JAK2* wild-type (WT; n = 59) vs *JAK2V617F* mutated (*V617F*; n = 127) patients. (B) Overall survival of *JAK2V617F* mutated patients who had been categorized in quartiles according to the burden of mutated allele. P values are shown inside each box. Quartiles of *V617F* allele burden were as follows: first, 1% to 25%; second, greater than 25% to 50%; third, greater than 50% to 75%; fourth, greater than 75% to 100%.

However, the fact that overall survival in *JAK2V617F* mutated patients was similar to wild-type patients notwithstanding their higher hemoglobin level, which is considered as one major factor influencing survival in PMF, suggested possible heterogeneity within the category of mutated patients. Similarly, a correlation of *JAK2V617F* mutated status with outcome events, including thrombosis, in patients with PV resulted evident only after stratification according to their burden of mutated allele at diagnosis.^{28,29} Therefore, in this study, we used a sensitive real-time PCR approach to stratifying PMF patients in quartiles of burden of mutated allele at presentation. We found that patients included in the lower quartile showed significantly shorter progression time to anemia, leukopenia, and conversely longer time to large splenomegaly, compared with upper quartiles. More importantly, we found a striking difference in overall survival that was significantly reduced in patients of the lower quartile compared not only with upper quartiles but also with *JAK2* wild-type patients. Reduced survival was not the result of leukemic transformation (no patient in the lower quartile evolved to leukemia) but mainly to systemic infections. Thus, patients in the lower quartiles apparently died because of the consequences of bone marrow failure, as indirectly suggested by the shorter time to developing leukopenia. The poorer survival of patients harboring low *JAK2V617F* allele burden was first described in a study from the Mayo Clinic,¹⁴ although, at variance with present results, also leukemia-free survival was reportedly shorter in patients in-

Table 4. Cox proportional hazard models of factors independently predictive of overall survival of PMF patients

Variable	HR (95% CI)	P
Univariate		
Age	1.12 (1.07-1.18)	< .001
Female sex	7.58 (1.76-32.63)	.007
Hemoglobin level	0.77 (0.66-0.89)	.001
Leukocyte count	1.04 (1.02-1.05)	< .001
PB blasts > 1%	1.30 (1.16-1.45)	< .001
Splenomegaly (> 15 cm LCM)	2.41 (1.09-5.29)	.028
<i>V617F</i> burden < 25%	0.09 (0.03-0.32)	< .001
Multivariate		
Age	1.21 (1.08-1.34)	.001
PB blasts > 1%	1.57 (1.13-2.16)	.022
<i>V617F</i> burden < 25%	0.023 (0.002-0.24)	.002

cluded in the lower quartile. Because the follow-up time of the 2 series is comparable, differences in patient characteristics and/or of treatments used could unpredictably underlie these discrepancies. Furthermore, an additional variable might have been represented by the different source of genomic DNA used for quantification of *JAK2V617F* burden, that is, unfractionated whole bone marrow cells in the Mayo Clinic study compared with purified granulocytes in the current study.

In conclusion, results of this study validate and extend a recent report¹⁴ and point to a low *JAK2V617F* allele burden at diagnosis as a strong surrogate marker associated with shortened survival in PMF; at present, the biologic mechanisms underlying this correlation remain fully to be established. One additional implication of our findings is that, although *JAK2* genotyping is recommended in the diagnostic workup of suspected PMF according to the WHO classification, a quantitative rather than a qualitative assay would be more appropriate. In this regard, an initiative of the European Leukemia Net working group is undergoing with the aim to harmonize different *JAK2V617F* quantitation methods; indeed, a recent multicenter study found that several of the quantitative assays described in the literature produced discrepant results.³⁰ Indeed, the finding of a low *JAK2V617F* allele burden at diagnosis would point to a poorer prognosis that cannot be appropriately recognized by current score systems. This information might drive early therapeutic decisions, involving the use of stem cell transplantation in younger patients and/or patient inclusion in trials with investigational drugs. However, we acknowledge that a preferential clustering of low-allele burden subjects in the high-risk category of the International Working Group for Myelofibrosis Research and Treatment scoring system might have been missed because of the relatively small size of our patient population. Therefore, we suggest the opportunity of a large prospective study on a well-characterized population of patients and with a standardized *JAK2V617F* quantitation method, which might ideally find place within international consortia and potentially provide definite information within a relatively short time.

Acknowledgments

This study was supported by Istituto Toscano Tumori, Ente Cassa di Risparmio di Firenze, Ministero della Università e Ricerca (PRIN projects), and Università di Firenze (institutional funds, ex-60%). A.P. was supported by Associazione Italiana per le Leucemie, Firenze.

Authorship

Contribution: P.G. designed and performed research and contributed to manuscript writing; G.B. designed research and contributed to manuscript writing; G.S., A.R., F.L.C., E. Antonioli, L.P., F.D., and E. Ammatuna contributed patients and revised the manuscript; A.P. and V.P. performed research; G.L. analyzed data and revised the manuscript;

V.L. and A.B. contributed patients and revised the manuscript; T.B. designed research and contributed to manuscript writing; and A.M.V. designed and performed research and wrote the manuscript.

Conflict-of-interest disclosure: The authors declare no competing financial interests.

Correspondence: Alessandro M. Vannucchi, UF di Ematologia, Università degli Studi, Viale Morgagni, 85, 50134 Florence, Italy; e-mail: amvannucchi@unifi.it.

References

- James C, Ugo V, Le Couedic JP, et al. A unique clonal JAK2 mutation leading to constitutive signalling causes polycythaemia vera. *Nature*. 2005; 434(7037):1144-1148.
- Levine RL, Wadleigh M, Cools J, et al. Activating mutation in the tyrosine kinase JAK2 in polycythemia vera, essential thrombocythemia, and myeloid metaplasia with myelofibrosis. *Cancer Cell*. 2005;7(4):387-397.
- Baxter EJ, Scott LM, Campbell PJ, et al. Acquired mutation of the tyrosine kinase JAK2 in human myeloproliferative disorders. *Lancet*. 2005; 365(9464):1054-1061.
- Kralovics R, Passamonti F, Buser AS, et al. A gain-of-function mutation of JAK2 in myeloproliferative disorders. *N Engl J Med*. 2005;352(17): 1779-1790.
- Pardanani AD, Levine RL, Lasho T, et al. MPLW515 mutations in myeloproliferative and other myeloid disorders: a study of 1182 patients. *Blood*. 2006; 108(10):3472-3476.
- Pikman Y, Lee BH, Mercher T, et al. MPLW515L is a novel somatic activating mutation in myelofibrosis with myeloid metaplasia. *PLoS Med*. 2006; 3(7):e270.
- Guglielmelli P, Pancrazzi A, Bergamaschi G, et al. Anaemia characterises patients with myelofibrosis harbouring Mpl mutation. *Br J Haematol*. 2007;137(3):244-247.
- Tefferi A, Thiele J, Orazi A, et al. Proposals and rationale for revision of the World Health Organization diagnostic criteria for polycythemia vera, essential thrombocythemia, and primary myelofibrosis: recommendations from an ad hoc international expert panel. *Blood*. 2007;110(4):1092-1097.
- Vannucchi AM, Antonioli E, Guglielmelli P, Pardanani A, Tefferi A. Clinical correlates of JAK2V617F presence or allele burden in myeloproliferative neoplasms: a critical reappraisal. *Leukemia*. 2008;22(7):1299-1307.
- Campbell PJ, Green AR. The myeloproliferative disorders. *N Engl J Med*. 2006;355(23):2452-2466.
- Campbell PJ, Griesshammer M, Dohner K, et al. V617F mutation in JAK2 is associated with poorer survival in idiopathic myelofibrosis. *Blood*. 2006;107(5):2098-2100.
- Tefferi A, Lasho TL, Schwager SM, et al. The JAK2(V617F) tyrosine kinase mutation in myelofibrosis with myeloid metaplasia: lineage specificity and clinical correlates. *Br J Haematol*. 2005;131(3):320-328.
- Barosi G, Bergamaschi G, Marchetti M, et al. JAK2 V617F mutational status predicts progression to large splenomegaly and leukemic transformation in primary myelofibrosis. *Blood*. 2007; 110(12):4030-4036.
- Tefferi A, Lasho TL, Huang J, et al. Low JAK2V617F allele burden in primary myelofibrosis, compared to either a higher allele burden or unmutated status, is associated with inferior overall and leukemia-free survival. *Leukemia*. 2008; 22(4):756-761.
- Swerdlow SH, Campo E, Harris NL, et al, eds. *WHO Classification of Tumors of Haematopoietic and Lymphoid Tissues*. Lyon, France: International Agency for Research on Cancer; 2008.
- Tam CS, Abruzzo LV, Lin KI, et al. The role of cytogenetic abnormalities as a prognostic marker in primary myelofibrosis: applicability at the time of diagnosis and later during disease course. *Blood*. 2009;113(18):4171-4178.
- Hussein K, Huang J, Lasho T, et al. Karyotype complements the International Prognostic Scoring System for primary myelofibrosis. *Eur J Haematol*. 2009;92(4):255-259.
- Dupriez B, Morel P, Demory JL, et al. Prognostic factors in agnogenic myeloid metaplasia: a report on 195 cases with a new scoring system. *Blood*. 1996;88(3):1013-1018.
- Cervantes F, Dupriez B, Pereira A, et al. New prognostic scoring system for primary myelofibrosis based on a study of the International Working Group for Myelofibrosis Research and Treatment. *Blood*. 2009;113(13):2895-2901.
- Nussenzweig RH, Swierczek SI, Jelinek J, et al. Polycythemia vera is not initiated by JAK2V617F mutation. *Exp Hematol*. 2007;35(1):32-38.
- Cervantes F, Passamonti F, Barosi G. Life expectancy and prognostic factors in the classic BCR/ABL-negative myeloproliferative disorders. *Leukemia*. 2008;22(5):905-914.
- Rozman C, Giral M, Feliu E, Rubio D, Cortes MT. Life expectancy of patients with chronic nonleukemic myeloproliferative disorders. *Cancer*. 1991; 67(10):2658-2663.
- Cervantes F, Barosi G, Demory JL, et al. Myelofibrosis with myeloid metaplasia in young individuals: disease characteristics, prognostic factors and identification of risk groups. *Br J Haematol*. 1998;102(3):684-690.
- Elliott MA, Verstovsek S, Dingli D, et al. Monocytosis is an adverse prognostic factor for survival in younger patients with primary myelofibrosis. *Leuk Res*. 2007;31(11):1503-1509.
- Cervantes F, Barosi G, Hernandez-Boluda JC, Marchetti M, Montserrat E. Myelofibrosis with myeloid metaplasia in adult individuals 30 years old or younger: presenting features, evolution and survival. *Eur J Haematol*. 2001;66(5):324-327.
- Kroger N, Mesa RA. Choosing between stem cell therapy and drugs in myelofibrosis. *Leukemia*. 2008;22(3):474-486.
- Tefferi A, Huang J, Schwager S, et al. Validation and comparison of contemporary prognostic models in primary myelofibrosis: analysis based on 334 patients from a single institution. *Cancer*. 2007;109(10):2083-2088.
- Vannucchi AM, Antonioli E, Guglielmelli P, et al. Clinical profile of homozygous JAK2V617F mutation in patients with polycythemia vera or essential thrombocythemia. *Blood*. 2007;110(3):840-846.
- Vannucchi AM, Antonioli E, Guglielmelli P, et al. Prospective identification of high-risk polycythemia vera patients based on JAK2(V617F) allele burden. *Leukemia*. 2007;21(9):1952-1959.
- Lippert E, Girodon F, Hammond E, et al. Concordance of assays designed for the quantification of JAK2V617F: a multicenter study. *Haematologica*. 2008;94(1):8-45.