



UNIVERSITÀ
DEGLI STUDI
FIRENZE

FLORE

Repository istituzionale dell'Università degli Studi di Firenze

Selective Upregulation of Cardiac Endothelin System in Patients With Ischemic but Not Idiopathic Dilated Cardiomyopathy.

Questa è la Versione finale referata (Post print/Accepted manuscript) della seguente pubblicazione:

Original Citation:

Selective Upregulation of Cardiac Endothelin System in Patients With Ischemic but Not Idiopathic Dilated Cardiomyopathy.

Endothelin-1 System in the Human Failing Heart / Neri Serneri GG; Cecioni I; Vanni S; Paniccia R; Bandinelli B; Vetere A; Janming X; Bertolozzi I; Boddi M; Lisi GF; Sani G; Modesti PA.. - In: CIRCULATION

Availability:

The webpage <https://hdl.handle.net/2158/781180> of the repository was last updated on

Published version:

DOI: 10.1161/01.RES.86.4.377

Terms of use:

Open Access

La pubblicazione è resa disponibile sotto le norme e i termini della licenza di deposito, secondo quanto stabilito dalla Policy per l'accesso aperto dell'Università degli Studi di Firenze (<https://www.sba.unifi.it/upload/policy-oa-2016-1.pdf>)

Publisher copyright claim:

La data sopra indicata si riferisce all'ultimo aggiornamento della scheda del Repository FloRe - The above-mentioned date refers to the last update of the record in the Institutional Repository FloRe

(Article begins on next page)

Selective Upregulation of Cardiac Endothelin System in Patients With Ischemic but Not Idiopathic Dilated Cardiomyopathy

Endothelin-1 System in the Human Failing Heart

Gian Gastone Neri Serneri, Ilaria Cecioni, Simone Vanni, Rita Paniccia, Brunella Bandinelli, Annamaria Vetere, Xiao Janming, Iacopo Bertolozzi, Maria Boddi, Gian Franco Lisi, Guido Sani, Pietro Amedeo Modesti

Abstract—Only scarce information is available on the activity and modifications of the cardiac endothelin (ET)-1 system in heart failure due to ischemic (ICM) or idiopathic dilated (DCM) cardiomyopathy. The activity of the ET-1 system was investigated by measuring cardiac ET-1 and big ET-1 formation and quantifying cardiac mRNA for prepro-ET-1 (ppET-1), ET-converting enzyme-1, and ET_A and ET_B receptors both in myocardium and in isolated myocytes using Northern blot, reverse transcription-polymerase chain reaction, and in situ hybridization in 22 patients with DCM and 20 with ICM who underwent cardiac transplantation and in 7 potential heart transplant donors (nonfailing hearts). Notwithstanding a similar increase of plasma ET-1 in the 2 groups, cardiac ET formation, mRNA levels for ppET-1, and ET_A and ET_B receptors were higher on both the myocardium and isolated myocytes from ICM than on those from DCM hearts ($P < 0.001$ for all). ppET-1 and ET-converting enzyme-1 mRNAs were expressed on myocytes and endothelial and interstitial cells in ICM, whereas in DCM and nonfailing hearts they were mainly expressed on nonmyocyte cells. In both ICM and DCM, the ET_A mRNA signal was expressed on both myocytes and nonmyocyte cells, whereas ET_B mRNA was almost exclusively localized on nonmyocyte cells. ET_A- and ET_B-specific receptor binding was increased on both myocytes and cardiac membranes, showing a positive correlation with left ventricular ejection fraction in ICM ($r = 0.78$ and 0.70) but not in DCM patients. The present results show that human ventricular myocytes express all of the components of the ET-1 system, which is selectively upregulated in ICM patients and appears to be functionally important in the maintenance of cardiac function. (*Circ Res.* 2000;86:377-385.)

Key Words: endothelin ■ heart failure ■ myocytes ■ receptors ■ RNA

Endothelin (ET)-1 is a multifunctional peptide that exerts pleiotropic activities, including arterial and venous constriction, direct positive inotropic and chronotropic effects on isolated heart, and growth effects on vascular smooth muscle cells, fibroblasts, and isolated cardiomyocytes.¹ Prepro-ET-1 (ppET-1) mRNA is expressed by both rat and human cardiac myocytes and interstitial cells that synthesize and secrete mature ET-1.²⁻⁴ The protease that catalyzes the conversion (ET-converting enzyme, ECE) from the 38-residue inactive intermediate big ET-1 to achieve ET-1 is expressed in the endocardium and myocardium.⁵ The differing biological activities of ET-1 appear to be mediated through 2 receptor subtypes (ET_A and ET_B),⁶ which are both present in the human myocardium and that of other species.⁷ Thus, a complete ET-1 system is represented in human myocardium.

Cardiac ppET-1 mRNA expression and ET-1 synthesis have been found to be increased in experimental hypertrophy by pressure overload⁸⁻¹⁰ and in experimental models of congestive heart failure (CHF),¹¹⁻¹³ thus suggesting that the cardiac ET-1 system may be involved in cardiac diseases.

There have been very few investigations of the cardiac ET-1 system in human hypertrophy and heart failure. Expression of mRNA for ppET-1 and cardiac ET-1 formation have been found to be increased in hypertrophy with parietal wall stress < 90 kilodyne/cm² because of aortic valve stenosis.⁴ In situ hybridization has shown that ppET-1 mRNA is expressed in myocytes and to a lesser degree also in vascular and interstitial cells.⁴ Several studies have investigated cardiac ET-1 receptors. In endomyocardial bioptic specimens from patients with hypertrophic cardiomyopathy, mRNA expres-

Received September 16, 1999; accepted December 8, 1999.

From the Clinica Medica Generale e Cardiologia (G.G.N.S., I.C., S.V., R.P., B.B., A.V., X.J., I.B., M.B., P.A.M.), University of Florence; Institute of Thoracic and Cardiovascular Surgery (G.F.L.), University of Siena; and Department of Cardiosurgery (G.S.), University of Cagliari, Italy.

Presented in part at the 71st Scientific Sessions of the American Heart Association, Dallas, Tex, November 8-11, 1998, and published in abstract form (*Circulation.* 1998;98[suppl I]:I-768).

Correspondence to Gian Gastone Neri Serneri, Clinica Medica Generale e Cardiologia, University of Florence, Viale Morgagni 85, 50134 Florence, Italy.

© 2000 American Heart Association, Inc.

Circulation Research is available at <http://www.circresaha.org>

TABLE 1. Main Echocardiographic and Hemodynamic Characteristics of Subjects Investigated

	Controls	NF	ICM	DCM
NYHA class, III/IV	10/10	10/12
Age, y	58±12	44±5*	59±6	56±11
Sex, M/F	16/4	5/2	15/5	14/8
Body surface area, m ²	1.87±0.17	1.86±0.18	1.85±0.17	1.83±0.26
LVEDDI, mm/m ²	26.7±2.3	26.4±3.1	39.1±4.5*	44.1±6.7*†
LVMI, g/m ²	107±15	104±18	213±35*	266±49*†
Ejection fraction, %	63±4.5	61±3.9	22.2±6.5*	19±7.5*
Vcf, s ⁻¹	1.16±0.17	1.09±0.23	0.48±0.19*	0.46±0.16*
Cardiac index, L/m ² ×min ⁻¹	2.96±0.36	...	2.04±0.45*	2.03±0.40*
MPAP, mm Hg	15.2±2.3	...	32.3±10.1*	33.7±13.6*
PCWP, mm Hg	5.7±1.8	...	21.6±7.8*	21.6±9.3*

NYHA indicates New York Heart Association; LVEDDI, left ventricular end diastolic diameter index; LVMI, left ventricular mass index; Vcf, mean midwall velocity of circumferential fiber shortening; MPAP, mean pulmonary artery pressure; and PCWP, pulmonary capillary wedge pressure.

* $P < 0.01$ vs controls; † $P < 0.01$ vs ICM.

sion for ET_A receptors was not different from controls.¹⁴ ET-1 receptor subtypes have recently been investigated in myocardial homogenates of hearts from patients with end-stage idiopathic dilated cardiomyopathy (DCM)^{15–17} or ischemic cardiomyopathy (ICM),¹⁵ with conflicting results. Thus, despite the great potential pathophysiological and clinical implications of the cardiac ET-1 system,¹⁸ information about its functional activity in heart failure is lacking. Two factors might be critical in the study of the ET-1 system in this setting, as follows: first, a separate analysis of ET-1 receptors for myocytes and nonmyocyte myocardial cells, and second, investigation of the cardiac ET-1 system in relation to the etiology and severity of cardiac failure. The present study was therefore designed to investigate the functional activity of the cardiac ET-1 system in patients with DCM and ICM at different stages of heart failure severity. To this end, cardiac ET formation and receptor binding were evaluated and mRNA levels of ppET-1, ECE-1, ET_A, and ET_B receptor subtypes were quantified separately in isolated cardiomyocytes and in homogenated hearts.

Materials and Methods

We investigated 42 patients with heart failure afflicted with DCM (n=22) or ICM (n=20) who were scheduled to undergo cardiac transplantation. Patients with arterial hypertension, a recent history (<6 months) of myocardial infarction, or echocardiographic evidence of valve or congenital heart disease were not considered for the study. The control group was made up of 20 normotensive patients with atypical chest pain in whom angiography and routine diagnostic procedures did not reveal any abnormalities. Diagnosis of DCM or ICM was based on clinical and echocardiographic examination, cardiac catheterization, and coronary angiography.

Myocardial ventricular tissue was collected from patients with DCM and ICM during cardiac transplantation. Cardiac specimens were also obtained from 7 donors with no histories or signs of heart disease, whose hearts could not be transplanted because of surgical reasons or blood group incompatibility (nonfailing [NF] hearts) (Table 1). The protocol of this study complies with the principles of the Helsinki declaration. All patients gave their informed, written consent to participate and to have their heart and blood samples used

for the study. Echocardiographic and hemodynamic measurements were performed prospectively, as previously described.⁴

The estimation of cardiac ET-1 formation was performed by measuring the aorta-coronary sinus gradient of ET-1 and big ET-1 corrected for coronary flow and cardiac mass.⁴ Cardiomyocytes were isolated and membrane suspension was prepared from a noninfarcted portion of left ventricle free wall.¹⁹ Binding studies were performed at equilibrium using selective ET_A (BMS-182874, a gift of Bristol-Myers-Squibb) or ET_B (BQ-788) antagonists.¹⁹ mRNAs for ppET-1, ECE-1, ET_A, and ET_B receptors, extracted with phenol-chloroform from transmural myocardial specimens, were quantified with Northern blots, using α-³²P-labeled gel-purified specific cDNA probes.

Levels of ppET-1, ECE-1, ET_A, and ET_B messengers were also quantified both in the myocardium and in isolated myocytes by reverse transcription-polymerase chain reaction (RT-PCR)⁴ using specific primers.¹⁷ The densitometric ratio was calculated using GAPDH as internal standard and expressed as the percentage of the values obtained in NF hearts.⁴ The in situ hybridization procedure was performed as previously described⁴ using specific cDNA photobiotin-labeled (Vector) probes. Myocardial cell types were identified by immunohistochemical methods using specific monoclonal antibodies. The average myocyte diameter was obtained by measuring the short-axis length of 200 myocytes using a computerized image-analysis system (Qwin, Leica).

Data are expressed as mean±SD. Comparisons between groups were performed using 1-way ANOVA. For multivariate re-evaluation of univariate correlations age, left ventricular end-diastolic diameter index, left ventricular mass index, left ventricular ejection fraction (LVEF), mean midwall velocity of circumferential fiber shortening (Vcf), mean pulmonary artery pressure, pulmonary capillary wedge pressure, average myocyte diameter, ET-1 and big ET-1 cardiac production, and concentration of ET-1 in venous blood were entered in a stepwise multiple regression analysis as independent variables considering ET_A and ET_B receptor densities on cardiomyocytes and membranes as dependent variables.

An expanded Materials and Methods section is available online at <http://www.circresaha.org>.

Results

Plasma Assays of Cardiac ET-1 and Big ET-1 Formation

The clinical characteristics of investigated subjects are reported in Table 1.

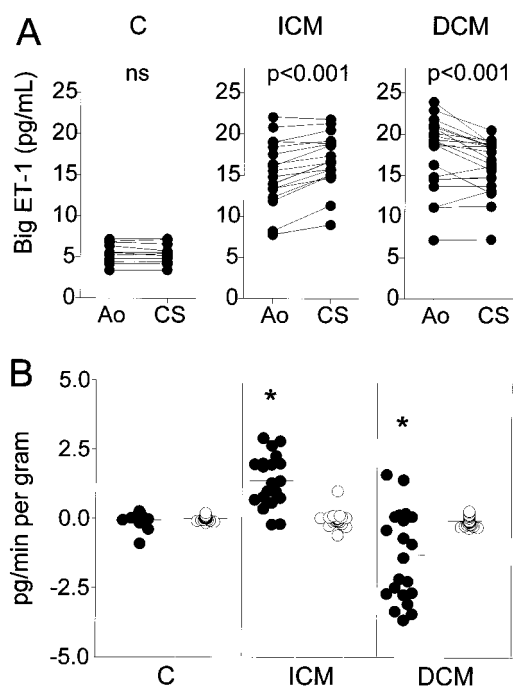


Figure 1. A, Big ET-1 concentrations in aorta (Ao) and coronary sinus (CS) blood in controls (C), and in ICM or DCM patients. B, Big ET-1 (●) and ET-1 (○) cardiac formation in controls (C) and in patients with ICM and DCM. Statistical significance in ET cardiac generation in comparison with controls is reported at top of columns. * $P<0.05$ vs controls in multiple-comparison test.

ET-1 and big ET-1 plasma concentrations in peripheral veins of ICM (3.1 ± 1 and 15.2 ± 3.3 pg/mL) and DCM patients (2.8 ± 0.9 and 17.2 ± 4.1 pg/mL) were higher than in controls (0.79 ± 0.4 and 4.7 ± 1.6 pg/mL, $P<0.001$ for both), with no significant differences between the 2 patient groups.

The mean aorta-coronary sinus concentration gradient of ET-1 was not significantly different among the 3 groups. Conversely, the concentration gradient of big ET-1 was significantly higher in ICM (1.7 ± 1.1 pg/mL, $P<0.001$) than in DCM patients (-1.4 ± 1.8 pg/mL, $P<0.001$) or controls (-0.04 ± 0.23 pg/mL) (Figure 1A). The mean highest concentration gradient of big ET-1 was found in ICM and the lowest in DCM patients, as well as the amount of big ET-1 formed per minute per gram of tissue (Figure 1B).

Radioligand Binding Studies

The density of ET-1 binding sites (B_{max}) on myocytes isolated from the left ventricle of NF hearts was 42 ± 6 fmol/mg protein with 86% of ET_A subtype (Table 2). Cardiac membranes from NF hearts had an ET-1 binding site density (B_{max}) of 195 ± 25 fmol/mg with balanced proportions of ET_A (63%) and ET_B (37%) (Table 2 and Figure 2A).

The density of ET-1 binding sites on myocytes was significantly higher in ICM than DCM or NF hearts (Table 2). Both ET_A and ET_B subtypes were increased in the same proportion (+45% and +50%, respectively) (Figure 2B). The affinities of both subtypes were not significantly different among the various groups (Table 2).

Membranes from ICM hearts showed significantly higher binding site density than DCM ($P<0.01$) or NF ($P<0.01$)

TABLE 2. Characterization of ET Receptors on Cardiomyocytes and Cardiac Membranes

	NF	ICM	DCM
Cardiomyocytes			
B_{max} Total, fmol/mg	42 ± 6	$61\pm 10^*$	48 ± 8
B_{max} ET_A , fmol/mg	36 ± 5	$53\pm 8^*$	41 ± 7
B_{max} ET_B , fmol/mg	6 ± 1	$9\pm 2^*$	7 ± 2
$ET_A:ET_B$	86:14	85:15	86:14
K_d ET-1, nmol/L	0.32 ± 0.03	0.33 ± 0.06	0.31 ± 0.05
K_d BMS182874(ET_A), nmol/L	74 ± 29	83 ± 45	55 ± 12
K_d BQ788(ET_B), nmol/L	0.60 ± 0.19	0.65 ± 0.08	0.70 ± 0.07
Cardiac membranes			
B_{max} Total, fmol/mg	195 ± 25	$318\pm 72^*$	199 ± 37
B_{max} ET_A , fmol/mg	123 ± 18	$207\pm 50^*$	131 ± 32
B_{max} ET_B , fmol/mg	72 ± 10	$111\pm 27^*$	67 ± 17
$ET_A:ET_B$	63:37	65:35	66:34
K_d ET-1, nmol/L	0.32 ± 0.03	0.35 ± 0.07	0.35 ± 0.06
K_d BMS182874(ET_A), nmol/L	57 ± 28	77 ± 22	52 ± 26
K_d BQ788(ET_B), nmol/L	0.50 ± 0.08	0.32 ± 0.07	0.45 ± 0.07

* $P<0.01$ vs controls and DCM.

hearts (Table 2) without any differences in the affinity with a proportional increase of both ET_A (+62%, $P<0.01$) and ET_B (+59%, $P<0.01$) (Table 2). The individual data of the receptor densities are shown in Figure 2B.

Multivariate stepwise analysis revealed that ET_A and ET_B receptor density on both myocytes and membranes from ICM hearts was positively correlated with LVEF, whereas in DCM hearts only ET_B receptors demonstrated this positive correlation (Table 3 and Figure 2C). ET_A receptor density was positively correlated with myocyte diameter in both ICM ($r=0.80$, $P<0.01$) and DCM ($r=0.66$, $P<0.01$) hearts. No correlation was found among ET_A and ET_B myocyte or membrane receptor density and plasma concentration or cardiac production of ET-1 and big ET-1.

Quantification of ppET-1, ECE-1, ET_A , and ET_B mRNA Levels in the Myocardium and in Isolated Cardiomyocytes

RT-PCR revealed that ppET-1, ECE-1, ET_A , and ET_B receptor genes were expressed on myocytes isolated from all the ventricles. Levels of mRNA for ppET-1, ECE-1, ET_A , and ET_B receptors were significantly increased in myocytes from ICM hearts ($P<0.001$ versus NF hearts for all) but were not in myocytes from DCM hearts. No significant differences were found between DCM and NF hearts (Figure 3A).

RT-PCR performed on homogenated hearts showed a lower ET_A/ET_B mRNA ratio than in isolated myocytes, with an increased expression of both ET_A and ET_B mRNAs in ICM hearts (Figure 3A). mRNA for ppET-1 was also increased in ICM hearts, whereas no differences were found for ECE-1 mRNA expression in comparison with DCM and NF hearts (Figure 3A). Northern blots performed in myocardial samples confirmed the increased expression of mRNA for ppET-1, ET_A , and ET_B in ICM as compared with DCM and NF hearts (Figure 3B).

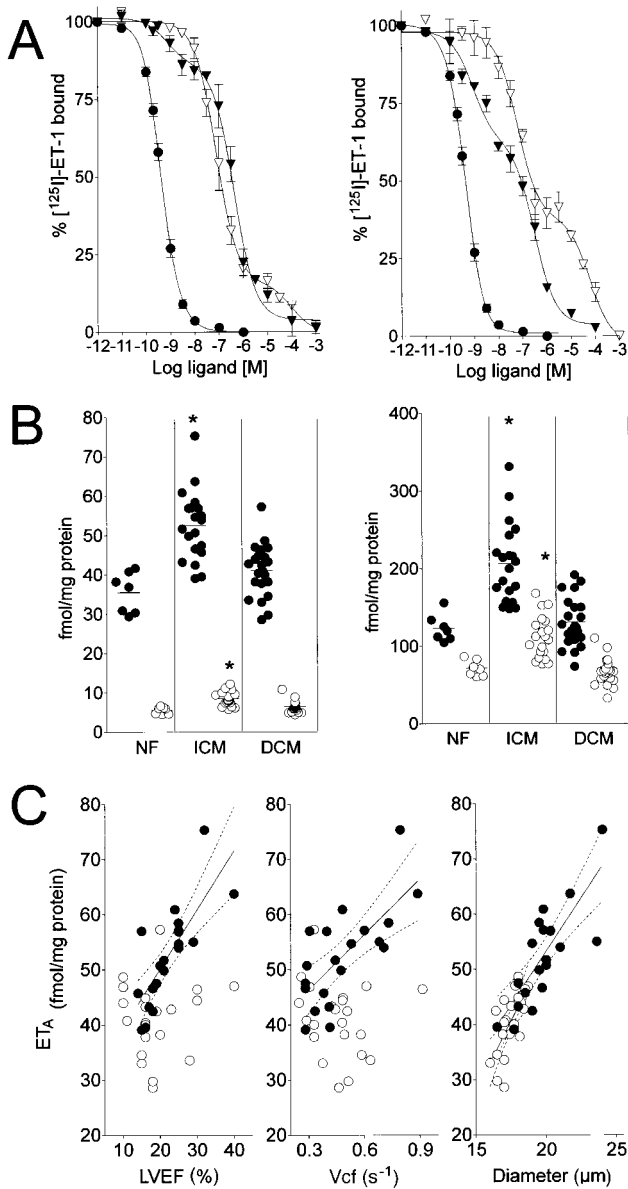


Figure 2. A, Competition of 125 I-labeled ET-1–specific binding to isolated cardiomyocytes (left) and cardiac membranes (right) by ET-1 (●), BMS-182874 (Δ), and BQ-788 (▲). Points are mean \pm SD of experiments performed in the 7 NF hearts. B, ET_A (●) and ET_B (○) binding site density on isolated cardiomyocytes (left) and cardiac membranes (right) of NF, ICM, and DCM hearts. * $P < 0.05$ vs NF hearts in multiple-comparison test. C, Relationship of the density of ET_A receptors on cardiomyocytes with LVEF (ICM [●], $r = 0.78$, $P < 0.001$; DCM [○], $r = 0.10$, NS), mean Vcf (ICM, $r = 0.72$, $P < 0.001$; DCM, $r = 0.05$, NS), and myocyte diameter (ICM, $r = 0.80$, $P < 0.001$; DCM, $r = 0.66$, $P < 0.001$).

In Situ Hybridization Studies

The average myocyte diameter was larger in ICM ($20.1 \pm 1.8 \mu\text{m}$) than in DCM ($17.2 \pm 0.9 \mu\text{m}$, $P < 0.001$) and NF ($15.2 \pm 1.4 \mu\text{m}$, $P < 0.001$) hearts. Negative and positive controls for hybridization showed that the hybridization signal was specific for mRNA, and mRNA in the biopsies was intact (Figure 4A and 4B).

In NF (Figure 4C and 4D) and DCM (Figure 4G and 4H) hearts, ppET-1 and ECE-1 mRNAs were mainly expressed on the interstitial and endothelial cells, whereas in ICM speci-

mens a positive signal was also present in myocytes (Figures 4E and 4F). In NF hearts, ET_A receptor mRNA was expressed on both myocyte and nonmyocyte cells (Figure 5A), whereas ET_B receptors were almost exclusively localized on nonmyocyte cells (Figure 5B). In ICM specimens, mRNA both for ET_A (Figure 5C) and ET_B (Figure 5D) subtypes had the same localization as observed in DCM specimens (Figure 5E and 5F) and NF hearts. The intensity of the signal was higher in ICM specimens than in the other groups.

Discussion

The present study establishes the following for the first time in humans: (1) the presence, distribution, and characterization of ET-1 receptor subtypes in ventricular myocytes from NF hearts; (2) the different pattern of ET-1 receptors on myocytes and ventricular membranes in ICM versus DCM; and (3) the selective activation of the cardiac ET-1 system in ICM and its changes in relation to the progressive worsening of heart failure.

Myocyte ET-1 Subtype Receptors

Binding studies and densitometric analysis for mRNA indicated that both ET_A and ET_B receptors are represented in ventricular myocytes from NF hearts, with a marked predominance of ET_A (86% versus 14%). The absolute density of ET-1 receptors was higher in membranes than in myocytes, with a more balanced proportion between ET_A and ET_B (63% versus 37%). The different ratio of ET_A and ET_B receptors in membranes and isolated myocytes may point to different functions of the 2 receptor subtypes. There is evidence that ET_A receptors mediate the positive inotropic and growth-promoting effects of ET-1.^{16,20,21} The close relationship found in the present study between myocyte ET_A receptor density and myocyte diameter corroborates this role of ET_A .

The function of ET_B receptors is not yet completely clear. Several studies have suggested that ET_B receptors may act as clearance receptors for ET-1,²² and the observation that ET-1 binding to ET_B receptors is less stable than its binding to ET_A receptors¹⁹ supports the above hypothesis. Because the total density of ET_B receptors is higher in ventricular membranes than in myocytes, it may be speculated that ET_B receptors may contribute to preventing excessive ET-1 myocardial concentrations.

The modifications of ventricular ET-1 binding sites occurring in CHF, particularly in DCMs, have been studied on ventricular homogenates. The different densities of ET-1 binding sites and the different proportion between ET_A and ET_B receptors on myocytes versus ventricular membranes may be the cause of the discrepancies among the various studies.^{15–17} Indeed, the densities of ET-1 binding sites in membranes from ICM and DCM hearts have not been found to differ significantly from those in NF hearts.¹⁵ Other studies performed in DCM hearts have reported either increased ET_A density and ET_B downregulation without any significant changes in the total density,¹⁷ or enhanced total density due to ET_A increase without any modifications of ET_B receptors.¹⁶ The separate analyses for myocytes and membranes, as performed in the present study, demonstrate that ET-1 binding sites are increased only in ICM hearts, with a proportional

TABLE 3. Correlation Between ET_A and ET_B Receptors and Clinical, Hemodynamic, and Neurohormonal Variables (Stepwise Regression Analysis)

	ICM		DCM	
	ET _A <i>r</i>	ET _B <i>r</i>	ET _A <i>r</i>	ET _B <i>r</i>
Isolated cardiomyocytes				
Age, y	0.24	0.16	-0.16	-0.15
Plasma ET-1, pg/mL	-0.35	-0.49	0.27	0.41
Cardiac ET-1 production, pg/min×g ⁻¹	0.19	0.19	-0.10	0.11
Cardiac big ET-1 production, pg/min×g ⁻¹	0.60	0.67	-0.19	0.23
Mean myocyte diameter, μm	0.80*	0.71	0.66*	0.31
LVMI, g/m ²	-0.22	-0.19	0.25	0.04
LVEDDI, mm/m ²	-0.24	-0.33	-0.02*	-0.35
MPAP, mm Hg	0.05	0.09	-0.18	0.10
PCWP, mm Hg	-0.16	0.03	-0.27	-0.22
LVEF, %	0.78*	0.84*	0.10	0.42*
Vcf, s ⁻¹	0.72	0.22	0.05	0.32
Cardiac membranes				
Age, y	0.12	0.13	-0.13	0.12
Plasma ET-1, pg/mL	-0.14	-0.24	0.28	0.38
Cardiac ET-1 production, pg/min×g ⁻¹	-0.07	0.06	0.14	-0.30
Cardiac big ET-1 production, pg/min×g ⁻¹	0.62	0.58	0.07	0.15
LVMI, g/m ²	-0.32	-0.27	0.63*	0.11
LVEDDI, mm/m ²	-0.68*	-0.55	0.51	-0.07
MPAP, mm Hg	0.09	-0.01	-0.04	-0.10
PCWP, mm Hg	0.07	-0.03	-0.14	-0.28
LVEF, %	0.70*	0.65*	-0.02	0.54*
Vcf, s ⁻¹	0.65	0.64	0.25	0.24

LVMI indicates left ventricular mass index; LVEDDI, left ventricular end-diastolic diameter index; MPAP, mean pulmonary artery pressure; PCWP, pulmonary capillary wedge pressure; LVEF, left ventricular ejection fraction; and Vcf, mean midwall velocity of circumferential fiber shortening.

*Independent variable at stepwise regression.

increase in ET_A and ET_B receptors both on myocytes and membranes and with changes correlated to LVEF.

Upregulation of Cardiac ET-1 System and Its Functional Meaning

The increased density of ET_A and ET_B receptors on myocytes and ventricular membranes and the overexpression of mRNA for ppET-1 and ECE-1 on myocytes indicate an upregulation of the cardiac ET-1 system in ICM patients, resulting in an accelerated cardiac synthesis of ET-1, as shown also by the increased big ET-1 aorta-coronary sinus gradient. The absence of an accompanying increase in the ET-1 aorta-coronary sinus gradient does not contradict this statement, because it may be due to the increased ET-1 degradation, to the enhanced binding of ET-1 to its receptors, or to both. Because ET-1 degradation was not investigated, this hypothesis cannot be excluded. However, the increased density of ET_A and ET_B receptors both on myocytes and ventricular membranes suggests an enhanced capture of ET-1 by binding sites rather than an increase in ET-1 degradation. This mechanism would be consistent with the increased ET-1 concentration in cardiac tissue reported in failing myocardium^{15,23,24} and with the finding that DCM patients, who showed neither enhanced

cardiac ET-1 formation by myocytes nor increased receptor density, had instead a significantly lower coronary sinus gradient for big ET-1 than controls. In these patients, whose mRNA for ECE-1 was not significantly different from NF hearts, the negative gradient for big ET-1 was associated with an ET-1 gradient that did not differ from that of controls or ICM patients, suggesting an increased conversion of plasma big ET-1 to ET-1 during the transcatheter passage. Upregulation of mRNA for ppET-1, increased peptide ET-1 level, and enhanced ET-1 receptor density were found in the myocardium from rats with the coronary artery ligation model of CHF.²⁵⁻²⁸ Conversely, ventricular ET-1 receptor density and myocyte ET-1 production in pigs with pacing-induced CHF were not different from those in control pigs.¹² The present results are thus consistent with experimental observations and emphasize the different pattern of the cardiac ET-1 system in ICM versus DCM patients.

ET-1 binding sites on cultured myocytes are downregulated by pretreatment with ET-1,²⁹ and the level of ET_B receptor mRNA is downregulated by ET-1 through decreasing the intracellular stability of mRNA molecules.³⁰ In ICM patients, ET_A and ET_B receptors on both myocytes and membranes were not downregulated, despite the elevated

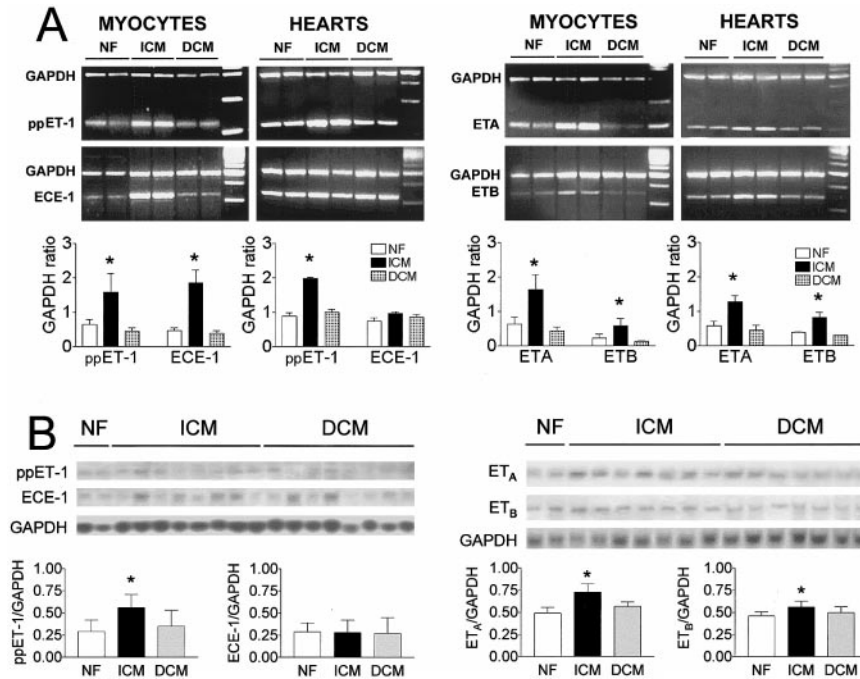


Figure 3. A, Expression of ppET-1, ECE-1, ET_A, ET_B, and GAPDH in ventricular cardiomyocytes and homogenated hearts from NF, ICM, and DCM subjects; representative RT-PCR experiments. Bar graphs show changes in the densitometric GAPDH ratio (ppET-1, ECE-1, ET_A, and ET_B/GAPDH). B, Northern blot analysis of mRNA expression for ppET-1, ECE-1, ET_A, ET_B, and GAPDH in hearts from NF and from ICM and DCM patients. * $P < 0.05$ vs NF hearts in multiple-comparison test.

ET-1 plasma levels. Only in patients with very low ejection fraction was the receptor density in the range of that of NF hearts. The precise mechanism determining the lack of ET-1 receptor downregulation is not clear. Cardiac ET-1 formation may be induced by different stimuli, including mechanical forces, hypoxia, and angiotensin II,³¹ which may be operating in ICM patients and may also upregulate the ET-1 receptors. Thus, it may be speculated that when the cardiac ET-1 synthesis is activated by locally acting stimuli, the local mechanisms of regulation predominate over the downregulation induced by plasma ET-1 levels. However, specially designed studies are needed to investigate this issue.

The upregulation of the cardiac ET-1 system seems to be important in the maintenance of the cardiac function in ICM patients, as indicated by the positive correlation of ET_A receptor density with LVEF and Vcf and, conversely, the negative correlation between ET_A receptors and left ventricular end-diastolic diameter index. The functional importance of cardiac ET-1–system activation seems to be confined to the normally functioning myocytes or to providing short-term support to failing myocardium.^{13,32} The favorable activity of ET-1 on cardiac function does not rule out the possibility that in the long term it may have adverse effects, because it has been shown to depress myocardial contractility and relaxation in pacing-induced CHF regardless of its effect on arterial load.³³ Experimental studies have shown that the elevation of plasma ET-1 concentration, obtained by infusion, dose-dependently decreases myocyte contractility in pigs with pacing-induced CHF,¹² and the long-term administration of various selective ET_A antagonists in experimental models of CHF in different animal species prevents the contractility depression on both isolated myocyte³⁴ and left ventricle.^{34–37}

Although the ET-1 cardiac system was not upregulated in DCM patients, both ET-1 and big ET-1 plasma concentra-

tions were similarly increased in ICM and DCM patients. The similar increase in ET-1 plasma levels in ICM and DCM patients, reported also in previous studies,^{23,38} reflects the severity of heart failure,²³ especially the increase in pulmonary arterial pressure,³⁸ and the endothelial dysfunction,³⁹ but not the type of cardiomyopathy.

Mechanisms of Cardiac ET-1 Activation

The present investigation extends current knowledge regarding the role of ET-1 in the pathophysiology of severe heart failure. The widely different pattern of the ET-1 system in ICM and DCM patients is not attributable to apparent clinical, echocardiographic, and hemodynamic differences, because the 2 groups of patients did not differ either for these parameters or for the drugs administered. Thus, it is reasonable to conclude that heart failure is not in itself responsible for cardiac ET-1 system activation, which is probably instead due to the primary disease underlying the heart failure. There is evidence that mechanical forces selectively induce cardiac growth factor synthesis in relation to pressure or volume overload.^{4,40,41} Although ICM consists of a complex mixture of ischemia, stress due to myocardial scar, and often a component of volume overload,⁴² myocytes are substantially subjected to stretch because of pressure overload, given that the residual healthy myocytes are forced to face a greater workload to compensate for the loss of neighboring contractile elements resulting from myocardial infarction and chronic myocardial ischemia. Experimental and human pressure-overload hypertrophy is associated with an increased ET-1 formation.^{4,8,9} In addition, in experimental severe heart failure induced by coronary artery ligation, an increased expression of ppET-1 mRNA was reported in nonischemic myocardial areas.^{25,28} Hypoxia and acute experimental ischemia have each been reported to induce ET-1 forma-

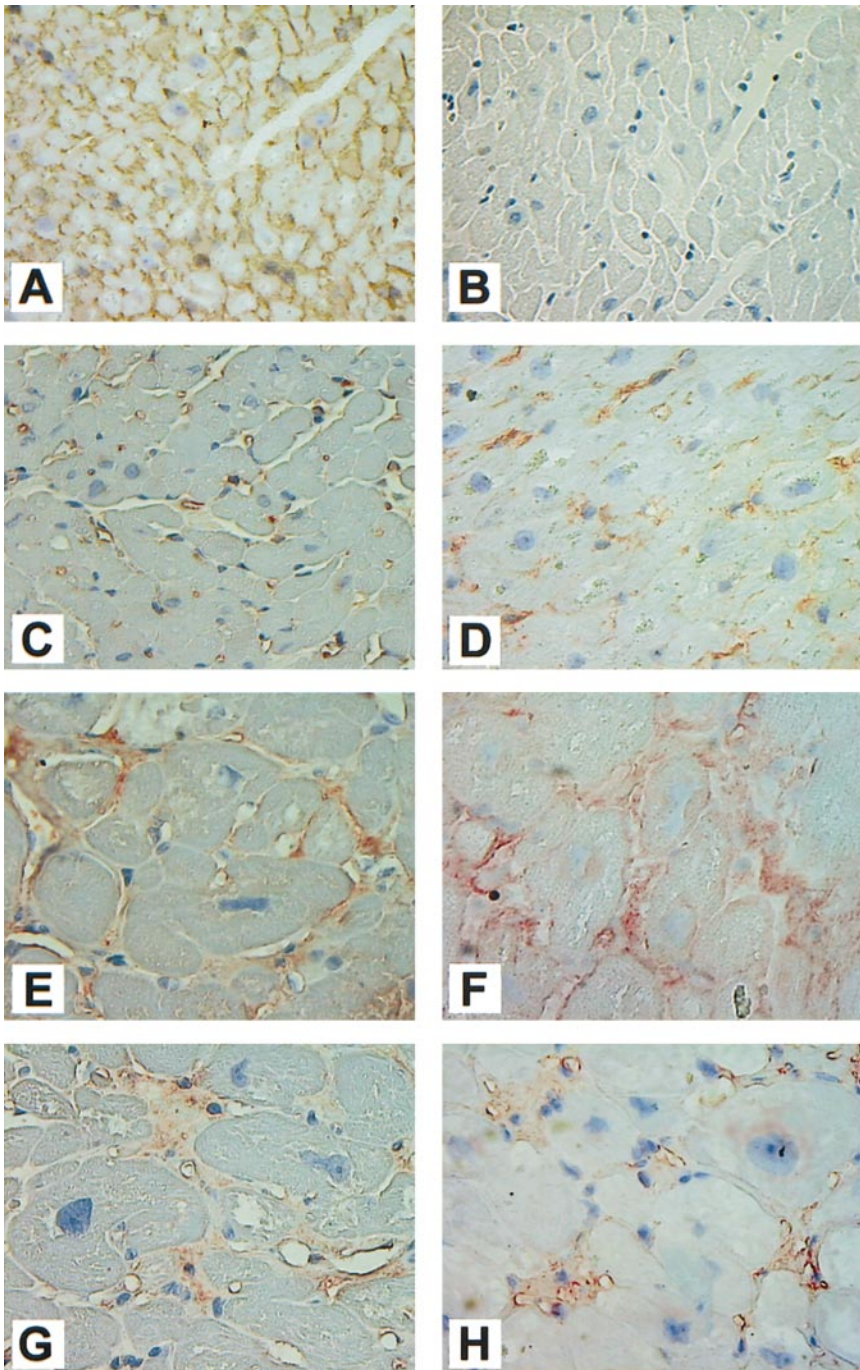


Figure 4. In situ hybridization for GAPDH mRNA (A) and plasmid vector pBR322 mRNA (B) in NF hearts, and for ppET-1 mRNA (C, E, and G) and ECE-1 mRNA (D, F, and H) in left ventricular sections from NF (C and D), ICM (E and F), and DCM (G and H) hearts (original magnification, $\times 400$). Positive mRNA signal revealed by red-brown staining. In NF hearts, positive signal for ppET-1 (C) and ECE-1 (D) mRNAs is detectable mainly in interstitial and endothelial cells. In ICM hearts, both ppET-1 (E) and ECE-1 (F) mRNAs are detectable also in the perinuclear region of myocytes. In DCM hearts, positive ppET-1 (G) and ECE-1 (H) mRNA signals are detectable both in myocytes and nonmyocytes to a lesser extent than in ICM hearts.

tion in isolated myocytes⁴³ or ventricular myocardium.⁴⁴ However, ischemia does not seem to be a major mechanism in the increased ET-1 formation in ICM patients, because an ischemic component is present in the heart of DCM patients^{45,46} and myocardial perfusion is impaired both at rest and in response to vasodilating stimuli in DCM patients.⁴⁷ Therefore, pressure overload seems to be a major mechanism of cardiac ET-1 system activation in ICM.

The inciting factor of DCM is unknown, but this condition is characterized by ventricular remodeling producing chamber dilation with normal or decreased wall thickness. The resulting eccentric hypertrophy^{45,48} suggests volume overload

as a prevalent hemodynamic mechanism. Patients with predominant volume-overload hypertrophy, like those with aortic regurgitation, show no evidence of increased myocyte ET-1 formation.⁴

Hence, although we cannot exclude other mechanisms, including the incapacity of myocytes from DCM patients to produce ET-1 in response to mechanical forces or cardiac and humoral factors, the different type of hemodynamic overload would seem to be the major mechanism responsible for the different patterns of the cardiac ET-1 system in cardiomyopathies.

In conclusion, the cardiac ET-1 system is selectively upregulated in ICM patients, whereas it is not in DCM

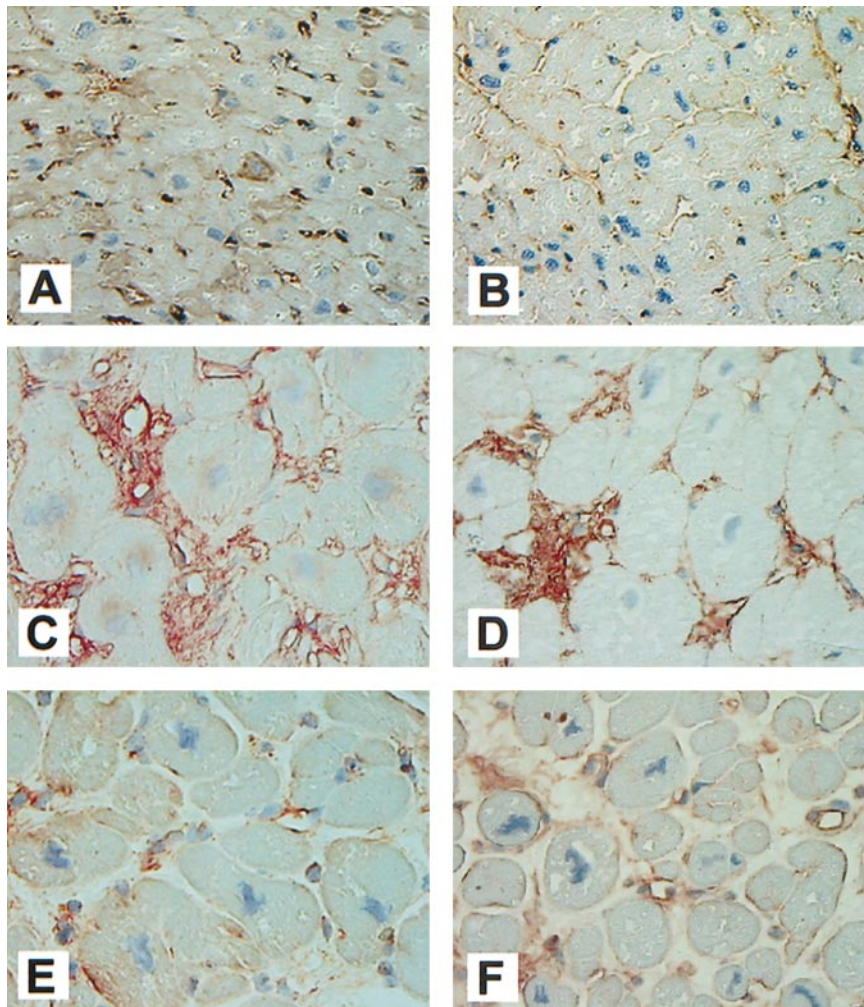


Figure 5. In situ hybridization for ET_A (A, C, and E) and ET_B (B, D, and F) in left ventricular sections from human hearts (original magnification $\times 400$). Positive mRNA signal is revealed by red-brown staining. A, Positive ET_A mRNA signal in both myocytes and nonmyocytes in ventricular section from NF heart. B, Positive ET_B mRNA signals in nonmyocytes from NF heart. C, Intense ET_A mRNA signal in both myocytes and nonmyocytes in ventricular section from ICM heart. D, Positive ET_B mRNA signal expressed in interstitial cells in ventricular section from ICM heart. E, Positive ET_A mRNA signal in both myocyte and nonmyocyte cells in specimens from a DCM heart. F, ET_B mRNA signal is present in nonmyocyte ventricular cells from DCM heart.

patients, and it appears to be functionally important for the maintenance of cardiac function in the former.

Acknowledgments

The financial support of Telethon—Italy (grant 864) and of the Ministero dell'Università e della Ricerca Scientifica (project 9806103104) is gratefully acknowledged. X.J. was the recipient of a research fellowship from the Ministero degli Affari Esteri of Italy (grant 22478bis).

References

- Rubanyi GM, Polokoff MA. Endothelins: molecular biology, biochemistry, pharmacology, physiology, and pathophysiology. *Pharmacol Rev.* 1994;46:325–415.
- Suzuki T, Kumazaki T, Mitsui Y. Endothelin-1 is produced and secreted by neonatal rat cardiac myocytes in vitro. *Biochem Biophys Res Commun.* 1993;191:823–830.
- Plumpton C, Ashby MJ, Kuc RE, O'Reilly G, Davenport AP. Expression of endothelin peptides and mRNA in the human heart. *Clin Sci (Colch).* 1996;90:37–46.
- Neri Serneri GG, Modesti PA, Boddi M, Cecioni I, Paniccia R, Coppo M, Galanti G, Simonetti I, Vanni S, Papa L, Bandinelli B, Migliorini A, Modesti A, Maccherini M, Sani G, Toscano M. Cardiac growth factors in human hypertrophy: relations with myocardial contractility and wall stress. *Circ Res.* 1999;85:57–67.
- Xu D, Emoto N, Giaid A, Slaughter C, Kaw S, deWit D, Yanagisawa M. ECE-1: a membrane-bound metalloprotease that catalyzes the proteolytic activation of big endothelin-1. *Cell.* 1994;78:473–485.
- Hosoda K, Nakao K, Arai H, Suga S, Ogawa Y, Mukoyama M, Shirakami G, Saito Y, Nakanishi S, Imura H. Cloning and expression of human endothelin-1 receptor cDNA. *FEBS Lett.* 1991;287:23–26.
- Molenaar P, O'Reilly G, Sharkey A, Kuc RE, Harding DP, Plumpton C, Gresham GA, Davenport AP. Characterization and localization of endothelin receptor subtypes in the human atrioventricular conducting system and myocardium. *Circ Res.* 1993;72:526–538.
- Arai M, Yoguchi A, Iso T, Takahashi T, Imai S, Murata K, Suzuki T. Endothelin-1 and its binding sites are upregulated in pressure overload cardiac hypertrophy. *Am J Physiol.* 1995;268:H2084–H2091.
- Yorikane R, Sakai S, Miyauchi T, Sakurai T, Sugishita Y, Goto K. Increased production of endothelin-1 in the hypertrophied rat heart due to pressure overload. *FEBS Lett.* 1993;332:31–34.
- Ito H, Hiroe M, Hirata Y, Fujisaki H, Adachi S, Akimoto H, Ohta Y, Marumo F. Endothelin ET_A receptor antagonist blocks cardiac hypertrophy provoked by hemodynamic overload. *Circulation.* 1994;89:2198–2203.
- Wang QD, Hensen A, Li XS, Lundberg JM, Uriuda Y, Pernow J. Local overflow and enhanced tissue content of endothelin following myocardial ischaemia and reperfusion in the pig: modulation by L-arginine. *Cardiovasc Res.* 1995;29:44–49.
- Thomas PB, Liu EC, Webb ML, Mukherjee R, Hebbar L, Spinale FG. Exogenous effects and endogenous production of endothelin in cardiac myocytes: potential significance in heart failure. *Am J Physiol.* 1996;271:H2629–H2637.
- Sakai S, Miyauchi T, Sakurai T, Kasuya Y, Ihara M, Yamaguchi I, Goto K, Sugishita Y. Endogenous endothelin-1 participates in the maintenance of cardiac function in rats with congestive heart failure. *Circulation.* 1996;93:1214–1222.
- Hasegawa K, Fujiwara H, Koshiji M, Inada T, Ohtani S, Doyama K, Tanaka M, Matsumori A, Fujiwara T, Shirakami G, Hosoda K, Nakao K,

- Sasayama S. Endothelin-1 and its receptor in hypertrophic cardiomyopathy. *Hypertension*. 1996;27:259–264.
15. Pönicke K, Volgelsang M, Heinroth M, Becker K, Zolk O, Bhöm M, Zerkowski HR, Brodde OE. Endothelin receptors in the failing and nonfailing human heart. *Circulation*. 1998;97:744–751.
 16. Pieske B, Beyersmann B, Breu V, Löffler BM, Schlotthauer K, Maier LS, Schmidt-Schweda S, Just H, Hasenfuss G. Functional effects of endothelin and regulation of endothelin receptors in isolated human nonfailing and failing myocardium. *Circulation*. 1999;99:1802–1809.
 17. Zolk O, Quatteck J, Sitzler G, Schrader T, Nickenig G, Schnabel P, Shimada K, Takahashi M, Böhm M. Expression of endothelin-1, endothelin-converting enzyme, and endothelin receptors in chronic heart failure. *Circulation*. 1999;99:2118–2123.
 18. Colucci WS. Myocardial endothelin: does it play a role in myocardial failure? *Circulation*. 1996;93:1069–1072.
 19. Modesti PA, Vanni S, Paniccio R, Bandinelli B, Bertolozzi I, Polidori G, Sani G, Neri Serneri GG. Characterization of endothelin-1 receptor subtypes in isolated human cardiomyocytes. *J Cardiovasc Pharmacol*. 1999;34:333–339.
 20. Meyer M, Lehnart S, Pieske B, Schlottauer K, Munk S, Holubarsch C, Just H, Hasenfuss G. Influence of endothelin-1 on human atrial myocardium, myocardial function and subcellular pathways. *Basic Res Cardiol*. 1996;91:86–93.
 21. Hilal-Dandan R, Merck DT, Lujan JP, Brunton LL. Coupling of the type A endothelin receptor to multiple responses in adult rat cardiac myocytes. *Mol Pharmacol*. 1994;45:1183–1190.
 22. Brunner F, Doherty AM. Role of ET_B receptors in local clearance of endothelin-1 in rat heart: studies with the antagonists PD 155080 and BQ-788. *FEBS Lett*. 1996;396:238–242.
 23. Wei CM, Lerman A, Rodeheffer RJ, McGregor CGA, Brandt RR, Wright S, Heublein DM, Edwards WD, Burnett JC. Endothelin in human congestive heart failure. *Circulation*. 1994;89:1580–1586.
 24. Fukuchi M, Giaid A. Expression of endothelin-1 and endothelin-converting enzyme-1 mRNAs and proteins in failing human hearts. *J Cardiovasc Pharmacol*. 1998;31(suppl 1):S421–S423.
 25. Sakai S, Miyauchi T, Kobayashi M, Yamaguchi I, Goto K, Sugishita Y. Inhibition of myocardial endothelin pathway improves long-term survival in heart failure. *Nature*. 1996;384:353–355.
 26. Fraccarollo D, Hu K, Galuppo P, Gaudron P, Ertl G. Chronic endothelin receptor blockade attenuates progressive ventricular dilation and improves cardiac function in rats with myocardial infarction: possible involvement of myocardial endothelin system in ventricular remodeling. *Circulation*. 1997;96:3963–3973.
 27. Kobayashi T, Miyauchi T, Sakai S, Kobayashi M, Yamaguchi I, Goto K, Sugishita Y. Expression of endothelin-1, ET_A and ET_B receptors, and ECE and distribution of endothelin-1 in failing rat heart. *Am J Physiol*. 1999;276:H1197–H1206.
 28. Picard P, Smith PJ, Monge JC, Rouleau JL, Nguyen QT, Calderone A, Stewart DJ. Coordinated upregulation of the cardiac endothelin system in a rat model of heart failure. *J Cardiovasc Pharmacol*. 1998;31(suppl 1):S294–S297.
 29. Hirata Y, Fukuda Y, Yoshimi H, Emori T, Shichiri M, Marumo F. Specific receptor for endothelin in cultured rat cardiocytes. *Biochem Biophys Res Commun*. 1989;160:1438–1444.
 30. Sakurai T, Morimoto H, Kasuya Y, Takuwa Y, Nakauchi H, Masaki T, Goto K. Level of ET_B receptor mRNA is down-regulated by endothelins through decreasing the intracellular stability of mRNA molecules. *Biochem Biophys Res Commun*. 1992;186:342–347.
 31. Miyauchi T, Masaki T. Pathophysiology of endothelin in the cardiovascular system. *Annu Rev Physiol*. 1999;61:391–415.
 32. Goto K, Hama H, Kasuya Y. Molecular pharmacology and pathophysiological significance of endothelin. *Jpn J Pharmacol*. 1996;72:261–290.
 33. Onishi K, Ohno M, Little WC, Cheng CP. Endogenous endothelin-1 depresses left ventricular systolic and diastolic performance in congestive heart failure. *J Pharmacol Exp Ther*. 1999;288:1214–1222.
 34. Spinale FG, Walker JD, Mukherjee R, Iannini JP, Keever AT, Gallagher KP. Concomitant endothelin receptor subtype-A blockade during the progression of pacing induced congestive heart failure in rabbits: beneficial effects on left ventricular and myocyte function. *Circulation*. 1997;95:1918–1929.
 35. Saad D, Mukherjee R, Thomas PB, Iannini JP, Basler CG, Hebban L, O SJ, Moreland S, Webb ML, Powell JR, Spinale FG. The effects of endothelin-A receptor blockade during the progression of pacing-induced congestive heart failure. *J Am Coll Cardiol*. 1998;32:1779–1786.
 36. Yamauchi-Kohno R, Miyauchi T, Hoshino T, Kobayashi T, Aihara H, Sakai S, Yabana H, Goto K, Sugishita Y, Murata S. Role of endothelin in deterioration of heart failure due to cardiomyopathy in hamsters: increase in endothelin-1 production in the heart and beneficial effect of endothelin-A receptor antagonist on survival and cardiac function. *Circulation*. 1999;99:2171–2176.
 37. Wada A, Tsutamoto T, Ohnishi M, Sawaki M, Fukai D, Maeda Y, Kinoshita M. Effects of a specific endothelin-converting enzyme inhibitor on cardiac, renal, and neurohumoral functions in congestive heart failure: comparison of effects with those of endothelin A receptor antagonism. *Circulation*. 1999;99:570–577.
 38. Cody RJ, Haas GJ, Binkley PF, Capers Q, Kelley R. Plasma endothelin correlates with the extent of pulmonary hypertension in patients with chronic congestive heart failure. *Circulation*. 1992;85:504–509.
 39. Galatius S, Wroblewski H, Sorensen VB, Bie P, Parving HH, Kastrup J. Endothelin and von Willebrand factor as parameters of endothelial function in idiopathic dilated cardiomyopathy: different stimuli for release before and after heart transplantation? *Am Heart J*. 1999;137:549–554.
 40. Calderone A, Takahashi N, Izzo NJ Jr, Thaik CM, Colucci WS. Pressure- and volume-induced left ventricular hypertrophies are associated with distinct myocyte phenotypes and differential induction of peptide growth factor mRNAs. *Circulation*. 1995;92:2385–2390.
 41. Rozich JD, Barnes MA, Schmid PG, Zile MR, McDermott PJ, Cooper G IV. Load effects on gene expression during cardiac hypertrophy. *J Mol Cell Cardiol*. 1995;27:485–499.
 42. Swynghedauw B. Molecular mechanisms of myocardial remodeling. *Physiol Rev*. 1999;79:215–262.
 43. Ito H, Adachi S, Tamamori M, Fujisaki H, Tanaka M, Lin M, Akimoto H, Marumo F, Hiroe M. Mild hypoxia induces hypertrophy of cultured neonatal rat cardiomyocytes: a possible endogenous endothelin-1-mediated mechanism. *J Mol Cell Cardiol*. 1996;28:1271–1277.
 44. Tonnessen T, Giaid A, Saleh D, Naess PA, Yanagisawa M, Christensen G. Increased in vivo expression and production of endothelin-1 by porcine cardiomyocytes subjected to ischemia. *Circ Res*. 1995;76:767–772.
 45. Beltrami CA, Finato N, Rocco M, Feruglio GA, Puricelli C, Cigola E, Sonnenblick EH, Olivetti G, Anversa P. The cellular basis of dilated cardiomyopathy in humans. *J Mol Cell Cardiol*. 1995;27:291–305.
 46. Parodi O, De Maria R, Oltrona L, Testa R, Sambuceti G, Roghi A, Merli M, Belingheri L, Accinni R, Spinelli F, Pellegrini A, Baroldi G. Myocardial blood flow distribution in patients with ischemic heart disease or dilated cardiomyopathy undergoing heart transplantation. *Circulation*. 1993;88:509–522.
 47. Neglia D, Parodi O, Gallopin M, Sambuceti G, Giorgetti A, Pratali L, Salvadori P, Michelassi C, Lunardi M, Pelosi G, Marzilli M, L'Abbate A. Myocardial blood flow response to pacing tachycardia and to dipyridamole infusion in patients with dilated cardiomyopathy without overt heart failure: a quantitative assessment by positron emission tomography. *Circulation*. 1995;92:796–804.
 48. Dec GW, Fuster V. Idiopathic dilated cardiomyopathy. *N Engl J Med*. 1994;331:1564–1575.