



UNIVERSITÀ  
DEGLI STUDI  
FIRENZE

FLORE

## Repository istituzionale dell'Università degli Studi di Firenze

### **Regulation of intracellular Na<sup>+</sup> in health and disease: pathophysiological mechanisms and implications for treatment**

Questa è la Versione finale referata (Post print/Accepted manuscript) della seguente pubblicazione:

*Original Citation:*

Regulation of intracellular Na<sup>+</sup> in health and disease: pathophysiological mechanisms and implications for treatment / Coppini R; Ferrantini C; Mazzoni L; Sartiani L; Olivotto I; Poggesi C; Cerbai E; Mugelli A. - In: GLOBAL CARDIOLOGY SCIENCE & PRACTICE. - ISSN 2305-7823. - ELETTRONICO. - eCollection 2013:(2013), pp. 222-242.

*Availability:*

The webpage <https://hdl.handle.net/2158/872331> of the repository was last updated on

*Terms of use:*

Open Access

La pubblicazione è resa disponibile sotto le norme e i termini della licenza di deposito, secondo quanto stabilito dalla Policy per l'accesso aperto dell'Università degli Studi di Firenze (<https://www.sba.unifi.it/upload/policy-oa-2016-1.pdf>)

*Publisher copyright claim:*

La data sopra indicata si riferisce all'ultimo aggiornamento della scheda del Repository FloRe - The above-mentioned date refers to the last update of the record in the Institutional Repository FloRe

(Article begins on next page)



# Regulation of intracellular $\text{Na}^+$ in health and disease: pathophysiological mechanisms and implications for treatment

Raffaele Coppini<sup>1,\*</sup>, Cecilia Ferrantini<sup>2</sup>, Luca Mazzoni<sup>1</sup>, Laura Sartiani<sup>1</sup>, Iacopo Olivotto<sup>3</sup>, Corrado Poggesi<sup>2</sup>, Elisabetta Cerbai<sup>1</sup>, Alessandro Mugelli<sup>1</sup>

## ABSTRACT

Transmembrane sodium ( $\text{Na}^+$ ) fluxes and intracellular sodium homeostasis are central players in the physiology of the cardiac myocyte, since they are crucial for both cell excitability and for the regulation of the intracellular calcium concentration. Furthermore,  $\text{Na}^+$  fluxes across the membrane of mitochondria affect the concentration of protons and calcium in the matrix, regulating mitochondrial function. In this review we first analyze the main molecular determinants of sodium fluxes across the sarcolemma and the mitochondrial membrane and describe their role in the physiology of the healthy myocyte. In particular we focus on the interplay between intracellular  $\text{Ca}^{2+}$  and  $\text{Na}^+$ . A large part of the review is dedicated to discuss the changes of  $\text{Na}^+$  fluxes and intracellular  $\text{Na}^+$  concentration ( $[\text{Na}^+]_i$ ) occurring in cardiac disease; we specifically focus on heart failure and hypertrophic cardiomyopathy, where increased intracellular  $[\text{Na}^+]_i$  is an established determinant of myocardial dysfunction. We review experimental evidence attributing the increase of  $[\text{Na}^+]_i$  to either decreased  $\text{Na}^+$  efflux (e.g. via the  $\text{Na}^+/\text{K}^+$  pump) or increased  $\text{Na}^+$  influx into the myocyte (e.g. via  $\text{Na}^+$  channels). In particular, we focus on the role of the “late sodium current” ( $I_{\text{NaL}}$ ), a sustained component of the fast  $\text{Na}^+$  current of cardiac myocytes, which is abnormally enhanced in cardiac diseases and contributes to both electrical and contractile dysfunction. We analyze the pathophysiological role of  $I_{\text{NaL}}$  enhancement in heart failure and hypertrophic cardiomyopathy and the consequences of its pharmacological modulation, highlighting the clinical implications.

The central role of  $\text{Na}^+$  fluxes and intracellular  $\text{Na}^+$  physiology and pathophysiology of cardiac myocytes has been highlighted by a large number of recent works. The possibility of modulating  $\text{Na}^+$  inward fluxes and  $[\text{Na}^+]_i$  with specific  $I_{\text{NaL}}$  inhibitors, such as ranolazine, has made  $\text{Na}^+$  a novel suitable target for cardiac therapy, potentially capable of addressing arrhythmogenesis and diastolic dysfunction in severe conditions such as heart failure and hypertrophic cardiomyopathy.

**Keywords:** sodium, sodium current, heart failure, calcium, hypertrophic cardiomyopathy, mitochondria

<sup>1</sup>Department NeuroFarBa, Division of Pharmacology, University of Florence, Italy

<sup>2</sup>Department of Clinical and Experimental Medicine, division of Physiology, University of Florence, Italy

<sup>3</sup>Referral Center for Cardiomyopathies, Careggi University Hospital, Florence, Italy

\*Email: raffaele.coppini@unifi.it

<http://dx.doi.org/10.5339/gcsp.2013.30>

Submitted: 11 June 2013

Accepted: 1 September 2013

© 2013 Coppini, Ferrantini, Mazzoni, Sartiani, Olivotto, Poggesi, Cerbai, Mugelli, licensee Bloomsbury Qatar Foundation Journals. This is an open access article distributed under the terms of the Creative Commons Attribution license CC BY 3.0, which permits unrestricted use, distribution and reproduction in any medium, provided the original work is properly cited.

## INTRODUCTION

Sodium ( $\text{Na}^+$ ) is the principal cation in the extracellular milieu and its highly regulated movement across the membrane of cardiac myocytes is the primary determinant of action potential (AP) upstroke and is essential for autoregenerative impulse propagation throughout the myocardium. In order to support cell excitability a large  $\text{Na}^+$  gradient across the membrane needs to be maintained. Thus intracellular sodium concentration ( $[\text{Na}^{2+}]_i$ ) within the cardiac myocyte must be accurately controlled and is finely regulated by a number of channels and transporters.<sup>1</sup> Despite that  $\text{Na}^+$  has been classically seen solely as a regulator of cardiac excitability,  $[\text{Na}^{2+}]_i$  is an important modulator of numerous aspects of cardiomyocyte function, from excitation-contraction coupling to energy production and consumption. In fact,  $[\text{Na}^{2+}]_i$  is a major determinant of the intracellular concentrations of  $\text{Ca}^{2+}$  ( $[\text{Ca}^{2+}]_i$ ), as well as other ions and molecules. Moreover  $[\text{Na}^{2+}]_i$  strictly regulates the concentration of  $\text{Ca}^{2+}$  within the mitochondria, a major determinant of the rate of ATP production and the generation of reactive oxygen species (ROS). Great interest has been recently devoted to the study of  $\text{Na}^+$  homeostasis since  $[\text{Na}^{2+}]_i$  can be dysregulated in cardiac disease and its dysregulation may strongly contribute to their pathophysiology. As an example, increased  $[\text{Na}^{2+}]_i$  has been observed during ischemia<sup>2-5</sup> and abnormally high  $[\text{Na}^{2+}]_i$  was identified as a contributor to ischemia-reperfusion injury. Increase of  $[\text{Na}^{2+}]_i$  has also been observed in different models of heart failure (HF).<sup>6-9</sup> HF is characterized by a global dysregulation of  $\text{Ca}^{2+}$  homeostasis<sup>10</sup>: increased  $[\text{Na}^{2+}]_i$  has been suggested to contribute to altered  $\text{Ca}^{2+}$  handling, which in turn is the main determinant of the altered contractility and arrhythmias in HF. In this pathological setting, intracellular  $\text{Na}^{2+}$  overload and  $\text{Ca}^{2+}$  overload go hand in hand and may constitute a vicious circle.  $[\text{Na}^+]_i$  not only controls contractility and arrhythmogenicity but also regulates cardiomyocyte energetics via control of mitochondrial function:  $\text{Na}^{2+}$  overload may also contribute to energetic insufficiency and excessive production of ROS in cardiac diseases. For all these reasons, every therapeutic attempt aimed at normalizing  $\text{Ca}^{2+}$  homeostasis without addressing  $\text{Na}^{2+}$  overload is destined to fail. Actual therapeutic options for heart failure and other cardiac diseases mainly affect  $\text{Ca}^{2+}$  homeostasis and are incapable of reducing arrhythmogenesis and ameliorating contractile function of diseased hearts. Besides the direct electrophysiological effects, the possible global benefits of the inhibitors of  $\text{Na}^+$  channels and carriers, are therefore of utmost interest and are being investigated in many disease settings.<sup>11</sup> This review will focus on the regulation of  $[\text{Na}^{2+}]_i$  in healthy myocardium and on its alterations in cardiac diseases such as heart failure and hypertrophic cardiomyopathy. Moreover, we will review the evidence supporting novel therapeutic options aimed at normalizing  $\text{Na}^{2+}$  homeostasis in different cardiac diseases and their relevance for the clinical management of cardiac patients.

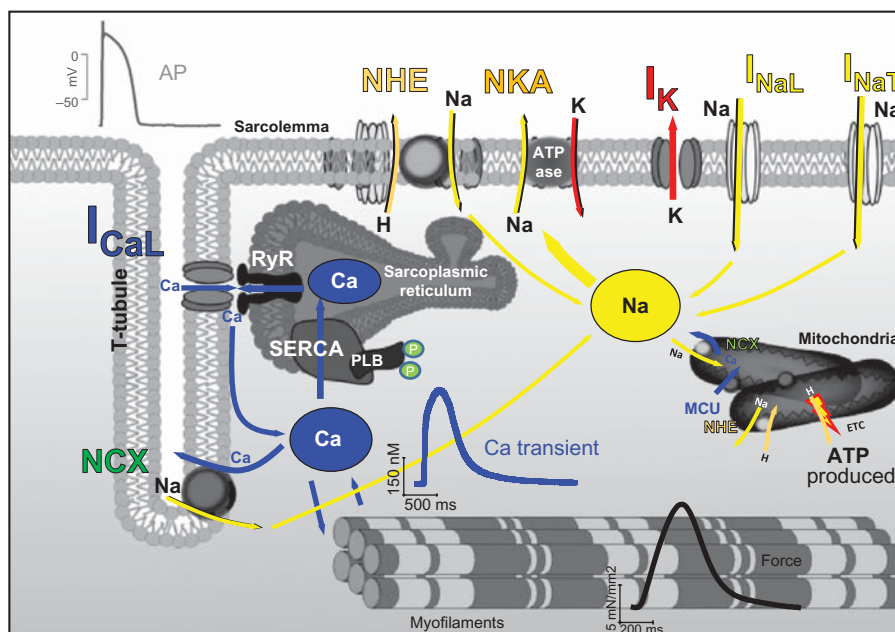
## MEASURING $[\text{Na}^+]_i$

The capability of measuring intracellular  $[\text{Na}^+]_i$  and its variations in response to pathological changes of cell function is essential to understand the role of  $\text{Na}^+$  in the heart. Early approaches to  $[\text{Na}^+]_i$  measurement involved the use of  $\text{Na}^+$  selective microelectrodes,<sup>12</sup> which are quantitatively precise but require direct probing of the desired cell with an impaling electrode, limiting its use in contracting tissue. Recently, the use of  $\text{Na}^+$  selective fluorescent indicator dyes has become the approach of choice.

Up to 2011, the most widely used  $\text{Na}^+$  indicator was SBFI,<sup>13</sup> which has been used both in single cells<sup>4</sup> and in intact myocardium.<sup>14</sup> The dye is intrinsically ratiometric, being similar to the Fura-2  $\text{Ca}^{2+}$  dye and allows calculation of the actual  $[\text{Na}^+]_i$  under different conditions. Its versatility is increased by the possibility to load intact cells and tissue with the membrane-permeant acetoxymethyl-ester form of the dye. However, SBFI used UV wavelength for excitation, making it unsuitable for use in some applications and in confocal microscopy.  $\text{Na}^+$  dyes excited by blue light have been recently developed to be used in confocal systems and in all largely available fluorescence microscopes. CoroNa Green<sup>15</sup> suffered from a low light yield and a low signal stability. More recently, Asante-Natrium Green I and II dyes have been developed and employed in a number of studies on cardiac cells,<sup>16,17</sup> with outstanding results in terms of stability and signal intensity. The introduction of Asante-Natrium Green dyes is rendering  $[\text{Na}^+]_i$  measurement available to all labs due to its remarkable ease of use. However, green dyes are not intrinsically ratiometric, rendering quantitation of  $[\text{Na}^+]_i$  more difficult.

### $[Na^+]_i$ REGULATION IN THE HEALTHY CARDIOMYOCYTE

$[Na^+]_i$  is maintained and regulated by a dynamic equilibrium of  $Na^+$  influx and efflux, mediated by a number of channels and transporters. The influx of  $Na^+$  into the myocyte occurs via multiple pathways, including  $Na^+$  channels,  $Na^+/Ca^{2+}$  exchanger (NCX) and  $Na^+/H^+$  exchanger (NHE). The efflux of  $Na^+$  from the cell to the extracellular medium can occur in some conditions through the NCX (acting in “reverse mode”) but is largely carried out by the  $Na^+/K^+$  pump (NKA), which can act against  $Na^+$  electrochemical gradient at rest. Additionally,  $[Na^{2+}]_i$  is in equilibrium with  $Na^+$  concentration within subcellular organelles, in particular the mitochondria, which can in turn contribute to  $[Na^{2+}]_i$  modulation in disease conditions. We will now focus on the role of these influx and efflux pathways in the normal heart. A cartoon describing  $Na^+$  homeostasis in the healthy cardiomyocyte is shown in Figure 1.



**Figure 1.**  $Na^+$  homeostasis in the healthy cardiomyocyte. Cartoon showing the cellular and molecular determinants of  $Na^+$  homeostasis in healthy cardiac cells and their role in the regulation of  $Ca^{2+}$  handling. Note that yellow arrows mark  $Na^+$  fluxes while blue arrows indicate  $Ca^{2+}$  fluxes. Representative APs from reference<sup>18</sup>, representative  $Ca^{2+}$  transient and force twitch from Coppini et al.<sup>17</sup>

### $Na^+$ channels: peak and late $Na^+$ current

When electrotonic propagation from the neighboring cells depolarizes the cell membrane to reach the threshold for  $Na^+$  channel voltage-dependent activation, a large number of channels open giving rise to a huge depolarizing current ( $\sim 20-30$  nA/pF at peak), which determines the upstroke phase of the AP. Therefore, the principal role of  $Na^+$  channels is to allow the AP to initiate and permit propagation of the AP throughout the myocardium. This current is generally short lived because the intrinsic time-dependent inactivation of  $Na^+$  channels determines their fast closure at the beginning of AP plateau. However, since the current is very large, a non-negligible amount of  $Na^+$  is transferred inside the cytosol at each activation. Their contribution to  $[Na^+]_i$  is obviously directly dependent on the rate of activation: the higher the heart rate, the larger the total amount of  $Na^+$  entering through the  $Na^+$  channel. The most represented isoform of  $Na^+$  channel in the heart is the so called “cardiac”  $Na^+$  channel NaV1.5 (SCN5a gene), which has a relatively low affinity for the selective blocker Tetrodotoxin (TTX). However, recent work identified other isoforms of  $Na^+$  channels in the heart, in particular neuronal isoforms such as NaV1.1, NaV1.3 and NaV1.7,<sup>19</sup> which are all largely more sensitive to TTX. Meier et al. found that neuronal channels, despite contributing for only 10% to total peak  $Na^+$  current, have a high density in the membrane of t-tubules and may thus be important for t-tubular propagation of the AP.<sup>20</sup> However, selective inhibition of neuronal isoform in the heart with TTX at low concentration ( $< 0.5 \mu M$ ) showed that neuronal channels are not essential for a proper AP upstroke and efficient

excitation-contraction coupling in the cardiomyocyte.<sup>21</sup> These investigations are made difficult by the fact that, in stimulated preparations (such as isolated myocytes), the sodium channel might not be necessary for cell contraction since the electrical stimulation might also activate the calcium channel directly.<sup>22</sup> Therefore, the exact role of neuronal Na<sup>+</sup> channels in the normal heart remains to be clarified.

Several experiments pointed out that inhibition of the Na<sup>+</sup> current with TTX not only reduces the maximal upstroke velocity of the AP but also shortens the plateau: these observations mean that a sustained component of Na<sup>+</sup> current is somewhat involved in determining the balance of inward and outward currents that influence AP plateau.<sup>23</sup> Two main mechanisms underlie the sustained component of Na<sup>+</sup> current:

- 1) “Window currents”, i.e. steady state Na<sup>+</sup> currents that are present in a voltage interval (–30 to –50 mV) where channel activation is still possible and channel inactivation is incomplete, so that a number of inactivated channels can recover from inactivation and immediately reopen.<sup>24,25</sup> Window currents are not largely represented in normal cardiac myocytes<sup>26,27</sup> but may be favored by a prolonged repolarization. Moreover, mutations of the SCN5a gene associated with Long QT Syndrome Type 3 (LQT3) are associated with increased window Na<sup>+</sup> currents.<sup>28</sup>
- 2) “Late Na<sup>+</sup> current (I<sub>NaL</sub>)”, i.e. TTX-sensitive Na<sup>+</sup> current that can be recorded outside the window voltage range. Such currents can be recorded from several types of normal cardiac cells from different species, such as rabbit and human atrial myocytes,<sup>29,30</sup> ventricular myocytes from dog, guinea pig and human,<sup>17,31,32</sup> purkinje fibers<sup>33,34</sup> and sinus node cells.<sup>35</sup> In normal myocytes, I<sub>NaL</sub> is generally very small (30 pA at 0 mV) but it may be enhanced 3 to 5 fold in pathological conditions (see below).<sup>36</sup> I<sub>NaL</sub> has been demonstrated to be brought about by the same Na<sup>+</sup> channels that are responsible for the peak current, i.e. NaV1.5. Indeed, when only NaV1.5 channels are re-expressed in cell vectors, I<sub>NaL</sub> can be recorded.<sup>37</sup> However, a recent work pointed out that 44% of the late sodium current in cardiac myocytes from dog ventricle is due to non-cardiac-type Na<sup>+</sup> channels, such as neuronal isoforms NaV1.1 or NaV1.3 or skeletal muscle isoform NaV1.4.<sup>38</sup> Single channel studies demonstrated that two mechanisms are involved in determining I<sub>NaL</sub>: (i) burst openings, which undergo voltage-dependent inactivation and (ii) scattered openings, which inactivate extremely slowly and therefore are able to determine a truly “background” Na<sup>+</sup> current. The first mechanism is the most represented in the human.<sup>37</sup> I<sub>NaL</sub> is also strongly rate dependent, in that it is reduced at faster rates of activation, suggesting inactivation and incomplete recovery of the current.<sup>34</sup> Albeit very small when compared to peak current, I<sub>NaL</sub> can significantly contribute to determine [Na<sup>+</sup>]<sub>i</sub> since its duration is several orders of magnitude longer. During a single AP, a normal I<sub>NaL</sub> may increase the amount of Na<sup>+</sup> flowing into the cell by 50% on top of the inflow occurring during the AP upstroke. As discussed later, this is of utmost importance in conditions where I<sub>NaL</sub> is increased and its contribution to the total Na<sup>+</sup> inflow increases significantly.

In summary, the total amount of Na<sup>+</sup> entering the cell through the Na<sup>+</sup> channels is essentially proportional to the rate of activation and to the density of I<sub>NaL</sub>.

### Na<sup>+</sup>/Ca<sup>2+</sup> exchanger (NCX)

NCX employs the energy provided by Na<sup>+</sup> entering the myocyte following its electrochemical gradient to transport Ca<sup>2+</sup> outside the cell. It is essentially aimed at maintaining a regular Ca<sup>2+</sup> homeostasis by allowing the excess of Ca<sup>2+</sup> to flow out of the cell against its electrochemical gradient.<sup>39</sup> In fact, NCX is the major outflow pathway for Ca<sup>2+</sup> and is crucial to maintain an equilibrium between Ca<sup>2+</sup> entering the cell through the Ca<sup>2+</sup> channel and Ca<sup>2+</sup> leaving the cell via the exchanger, which must be equal in steady-state conditions. Rate and function of the NCX depend on the intracellular and extracellular concentrations of both Na<sup>+</sup> and Ca<sup>2+</sup> and are also influenced by the membrane potential. At negative resting potentials, when most of the Ca<sup>2+</sup> outflow occurs, the electrochemical gradient of Na<sup>+</sup> and Ca<sup>2+</sup> favors the “forward” mode of the NCX: three sodium ions are brought inside the cell to extrude a single Ca<sup>2+</sup> with a net inflow of one positive charge. If Ca<sup>2+</sup> inside the cell increases for any reason, such as an increase of Ca<sup>2+</sup> current, so does the activity of the NCX, thereby increasing the amount of Na<sup>+</sup> flowing into the cell through the exchanger.<sup>40</sup> Moreover, the activity of NCX can be reduced by decreased pH and potentiated by ATP: in ischemic conditions, when pH and ATP are relatively lower,

NCX activity can be seriously impaired.<sup>41,42</sup> Though NCX mainly operates in the forward mode, at potentials positive to the NCX reverse potential ( $\sim -10$  mV), the exchanger can also operate in the reverse mode, producing entry of calcium ions coupled to outflow of  $\text{Na}^+$ . This phenomenon however is likely to play a minor role in the healthy myocyte: in fact, though membrane depolarization during upstroke and plateau could potentially support reverse mode, the concurrent increase of intracellular  $[\text{Ca}^{2+}]$  due to  $\text{Ca}^{2+}$ -induced  $\text{Ca}^{2+}$ -release from the SR antagonizes  $\text{Ca}^{2+}$  inflow through the NCX. In conditions where  $[\text{Na}^+]_i$  is higher and  $\text{Ca}^{2+}$  release from the SR is reduced NCX reverse mode may play an increased role, as discussed later.

### **$\text{Na}^+/\text{H}^+$ exchanger (NHE)**

NHE is also capable of exploiting the energy of  $\text{Na}^+$  gradient to pump  $\text{H}^+$  out of the cell by letting  $\text{Na}^+$  flow into the cell.<sup>43–45</sup> When pH is reduced, the activity of NHE increases in order to bring back pH to normal levels, making the NHE one of the main molecular modulators of cellular pH. Protons directly stimulate the exchanger, but NHE has been shown to be modulated by the intracellular signaling cascade mediated by a number of hormones, neurohormonal agonists and growth factors.<sup>46</sup> In conditions of intracellular acidosis, NHE can significantly contribute to increase  $\text{Na}^+$  entry and  $[\text{Na}^+]_i$  within the myocyte.

### **$\text{Na}^+/\text{K}^+$ ATPase (NKA)**

$\text{Na}^+$  removal through the NCX is non-relevant in normal conditions, therefore the main mechanism able to pump the excess of intracellular  $\text{Na}^+$  out of the cell is the NKA.<sup>47</sup> NKA is essential to maintain the gradients of  $\text{Na}^+$  and  $\text{K}^+$  across the membrane and to allow myocardial excitability. Using the energy liberated by the hydrolysis of ATP, the NKA is able to extrude 3 intracellular  $\text{Na}^+$  ions while bringing 2 extracellular K ions inside the cytosol, thus moving one net charge per cycle. The NKA is characterized by two major subunits,  $\alpha$  and  $\beta$ : the  $\alpha$  subunit features the binding site for ATP,  $\text{K}^+$ ,  $\text{Na}^+$  and cardiac glycosides, while the  $\beta$  is essential for a proper membrane localization and insertion. Different  $\alpha$  subunit isoforms with different affinity for ATP and ions exist in the heart and their relative expression can be modulated by cardiac diseases.<sup>47</sup> Interestingly, the rate of NKA can be actively modulated by a small membrane bound protein similar to phospholamban (the main modulator of sarcoplasmic reticulum  $\text{Ca}^{2+}$  ATPase –SERCA-), called phospholemman (PLM). PLM, like phospholamban, is abundant in the heart and can be phosphorylated following activation of  $\beta$ -adrenergic cascade.<sup>48</sup> When PLM interacts with the NKA, it reduces the activity of the  $\alpha$  subunit, ultimately reducing  $\text{Na}^+$  extrusion rate. This has been demonstrated via phospholemman knock-out in cardiac cells, which led to an increase of NKA activity of the same extent as maximal  $\beta$ -adrenergic stimulation.<sup>49</sup> These observations suggest that PLM, like phospholamban, detaches from the NKA when phosphorylated by protein kinase A, relieving the specific inhibition.

### **Mitochondrial $\text{Na}^+$ outflow and inflow mechanisms**

The main  $\text{Na}^{2+}$  efflux mechanism from the cytosol to the mitochondria in the cardiac myocyte is the mitochondrial  $\text{Na}^+/\text{H}^+$  exchanger (mNHE).<sup>50</sup> The electron transport chain leads to extrusion of protons from the mitochondrial matrix to the cytosol. The mNHE senses the excess of protons on the cytosolic side of mitochondrial membrane and brings back  $\text{H}^+$  ions into the matrix while extruding  $\text{Na}^+$  ions from the mitochondria. From this observation stems the assumption that mitochondrial  $[\text{Na}^+]$  is around 2 times lower than cytosolic  $[\text{Na}^+]$  in the intact cell, an assumption that has been experimentally confirmed in isolated mitochondria and permeabilized myocytes.<sup>50</sup> In line with this observation, metabolic inhibition, via reduction of the activity of the electron transport chain, abolishes the net flow of  $\text{Na}^+$  across the mitochondrial membrane and leads to an equal  $[\text{Na}^+]$  in mitochondria and cytosol. Under normal conditions, it is unlikely that mitochondria contribute substantially to the regulation of  $[\text{Na}^+]_i$ . However, in conditions of increased metabolic activity, due to the higher pH gradient across the mitochondrial membrane, the increased activity of the mNHE could actually lead to transient changes of  $[\text{Na}^+]_i$ .

The major mechanism involved in  $\text{Na}^+$  influx to the mitochondria is the mitochondrial  $\text{Na}^+/\text{Ca}^{2+}$  exchanger (mNCX). Like the sarcolemmal NCX, mNCX is electrogenic and transports 3 sodium ions from the cytosol to the mitochondrial matrix while extruding a single  $\text{Ca}^{2+}$  from the mitochondrion to the cytosol.<sup>51–55</sup> What provides the driving force for such an exchange given the fact the  $[\text{Na}^{2+}]$  gradient

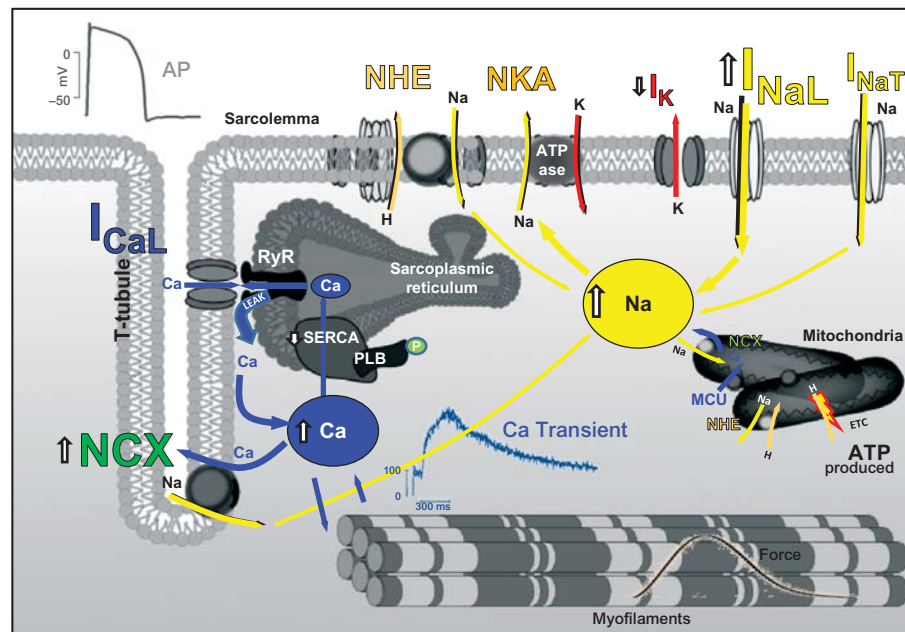
across the mitochondrial membrane is relatively small? Active mitochondria have a very large membrane potential with inward direction, ranging from  $-150$  mV to  $-180$  mV. This large  $\Delta V$  provides the driving force for mNCX function in the forward direction. Interestingly, the mNCX never reaches the equilibrium in the intact cell: considering  $[Na^+]_i = 8$  mM, mitochondrial  $[Na^+] = 5$  mM and cytosolic  $[Ca^{2+}] = 300$  nM (average values for an active myocyte), mitochondrial  $[Ca^{2+}]$  would be as low as 1 nM at equilibrium.<sup>56</sup> However, the measured mitochondrial  $[Ca^{2+}]$  in the intact active myocardium is usually above 150 nM.<sup>57</sup> There are multiple reasons explaining why the mNCX does not operate at equilibrium: (i) the  $Ca^{2+}$  uniporter continuously brings calcium ions inside the mitochondrion following the favorable electrochemical gradient for  $Ca^{2+}$  across the mitochondrial membrane and (ii) the activity of mNCX is much lower than that of the  $Ca^{2+}$  uniporter. When the uniporter is blocked by Ruthenium or by an excess of magnesium, mNCX approaches the equilibrium and mitochondrial  $[Ca^{2+}]$  is strongly reduced.<sup>54,55</sup> Mitochondrial  $[Ca^{2+}]$  is an important regulator of energetics: increased  $[Ca^{2+}]$  inside the mitochondria activates the enzymes of the oxidative metabolism thus leading to an increased production of NADH, which in turn increases the function of the electron transport chain, ultimately determining higher rate of ATP production.<sup>56</sup>  $Ca^{2+}$  can also directly activate the macromolecular components of the electron transport chain.<sup>58</sup> mNCX can play a significant role in regulating mitochondrial  $[Ca^{2+}]$  and thus cardiomyocyte energetics. Increased  $[Na^+]_i$  leads to increased influx of  $Na^+$  to the mitochondria via the mNCX, accompanied by the concurrent extrusion of  $Ca^{2+}$ , ultimately resulting in lower mitochondrial  $[Ca^{2+}]$  and thus decreased energetics. This phenomenon may be relevant in disease conditions where  $[Na^+]_i$  is elevated (see below).

### **$Na^+$ REGULATION IN HEART FAILURE (HF)**

HF involves a large number of pathophysiological pathways occurring at the level of the single myocyte. Depending on the model employed, some mechanisms may be different but there is a general consensus on the presence of two main features: (i) electrophysiological alterations leading to increased rate of “cellular arrhythmias” and (ii) abnormalities of excitation-contraction coupling (ECC) leading to contractile dysfunction. Abnormalities of  $Na^+$  fluxes and regulation of intracellular  $[Na^+]_i$  are likely involved in both. Numerous reports from animal models and human samples agree on a general increase of  $[Na^+]_i$  in the presence of HF.<sup>6-8</sup> Increased  $[Na^+]_i$  may have important deleterious consequences on arrhythmogenesis, contractility and energetics. We will now discuss the mechanisms involved in  $Na^+$  dysregulation in heart failure and the possible therapeutic role of pharmacological modulation of  $Na^+$  fluxes and homeostasis. A cartoon depicting  $Na^+$  regulation in HF is shown in Figure 2.

### **Abnormal $Ca^{2+}$ handling in heart failure**

In order to understand the implications of abnormal  $Na^+$  homeostasis in HF we have to keep in mind the large  $Ca^{2+}$  dysregulation occurring in HF myocytes. Most models of HF, including human, are characterized by decreased SR  $Ca^{2+}$ -ATPase (SERCA) expression and upregulation of NCX expression and function (Figure 3). On the other hand,  $Ca^{2+}$  current is generally unmodified.<sup>61</sup> Phospholamban (PLB) is the major modulator of SERCA function and its expression is typically unaltered in HF,<sup>62,63</sup> with decreased phosphorylation. The subsequent increase of PLB:SERCA ratio, coupled with the lower PLB phosphorylation, enhances the inhibitory effect of PLB on SERCA, contributing to lower SERCA function in HF. Decreased SERCA activity, by slowing down  $Ca^{2+}$  reuptake to the SR, allows more  $Ca^{2+}$  to be extruded via the NCX; coupled with the increased NCX expression<sup>64</sup> this results in a net loss of cell  $Ca^{2+}$  and contributes to the reduction of SR  $Ca^{2+}$  load in HF.<sup>65</sup> Another contributor to the lower SR  $Ca^{2+}$  content in HF is the increased diastolic leakage of  $Ca^{2+}$  from the SR, which is determined by the hyper-phosphorylation of ryanodine receptors (RyRs) by protein-kinase A (PKA) and/or  $Ca^{2+}$ -Calmodulin dependent protein kinase-II (CaMKII).<sup>66</sup> CaMKII activity is increased in HF, and CaMKII-dependent phosphorylation of RyR enhances  $Ca^{2+}$  spark frequency and thus spontaneous diastolic SR  $Ca^{2+}$  leak,<sup>67</sup> making it one of the leading pathway causing contractile dysfunction and arrhythmogenesis in HF. Enhanced NCX function, combined with the higher probability of spontaneous  $Ca^{2+}$  release from the SR, contributes directly to arrhythmogenesis via delayed-afterdepolarizations (DADs). When a large spontaneous  $Ca^{2+}$  release event occurs during diastole giving rise to a generalized  $Ca^{2+}$  wave, part of the released  $Ca^{2+}$  is extruded through the NCX, which generates an inward current that depolarizes the membrane (i.e. a DAD). If large enough, a DAD may reach the threshold for a premature AP, giving rise to a premature activation that can propagate through the

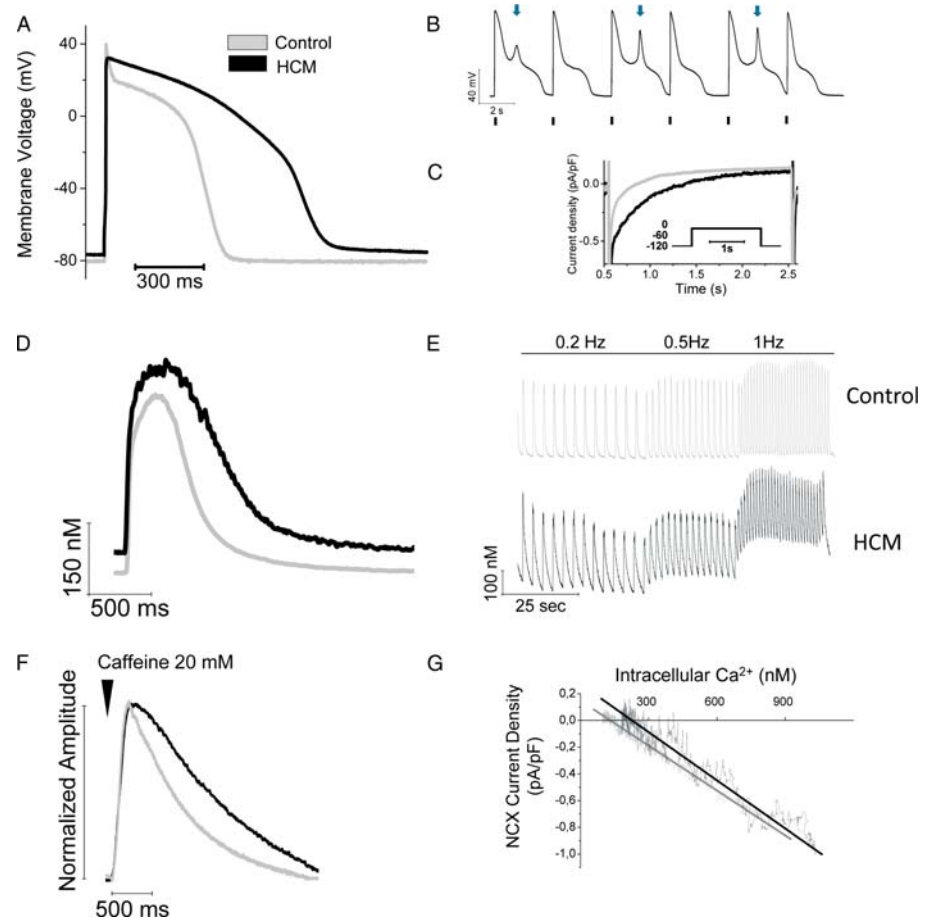


**Figure 2.**  $\text{Na}^+$  homeostasis in heart failure. Cartoon showing the cellular and molecular determinants of abnormal  $\text{Na}^+$  homeostasis in HF cardiac cells and their role in determining the dysfunction of  $\text{Ca}^{2+}$  handling. White thick arrows mark the changes occurring in HF with respect to control cardiomyocytes. The thickness of yellow and blue arrows has been changed to match the relative changes of  $\text{Na}^+$  and  $\text{Ca}^{2+}$  fluxes in HF. Representative AP from reference <sup>18</sup>, representative  $\text{Ca}^{2+}$  transient from Beuckelmann et al.<sup>59</sup> and force twitch from Sossalla et al.<sup>60</sup>

myocardium, triggering sustained arrhythmias. As explained below, abnormal  $\text{Na}^+$  homeostasis may further increase the risk of arrhythmias in HF with multiple mechanisms.

### Alterations of late $\text{Na}^+$ current in HF

Increased  $[\text{Na}^+]_i$  in HF may be due to increased  $\text{Na}^+$  influx or decreased  $\text{Na}^+$  efflux. Early studies suggested that an excess of  $\text{Na}^+$  influx is the major contributor to  $\text{Na}^+$  overload and the main source of the increased  $\text{Na}^+$  entry is the enhanced “late” or “persistent”  $\text{Na}^+$  current.<sup>7,8</sup> As explained before, a component of  $\text{Na}^+$  current with slow or incomplete inactivation can be measured in normal human and animal cardiac myocytes.<sup>26</sup> However, acquired and primary cardiac diseases are commonly characterized by abnormally large  $I_{\text{NaL}}$ . Enhancement of late  $\text{Na}^+$  current has been identified in many models of disease and may contribute to their pathogenesis: besides classical LQT3 syndrome, which is due to  $\text{Na}^+$  channel mutations,<sup>68</sup> increase  $I_{\text{NaL}}$  was also found as a consequence of ankyrin B mutations (LQT4 syndrome)<sup>69</sup> and caveolin-3 mutations (LQT-CAV3),<sup>70</sup> suggesting that the altered function of proteins linked to the  $\text{Na}^+$  channel can affect its function in a way similar to its own mutations. Moreover, abnormally large  $I_{\text{NaL}}$  was found in cells from hearts of patients affected by end stage HF,<sup>26,71</sup> in animal models of HF<sup>72–74</sup> and following myocardial infarction.<sup>74</sup> Hypoxia,<sup>75</sup> oxygen free radicals ( $\text{H}_2\text{O}_2$ ),<sup>76</sup> ischemic metabolites (like oxidized lipids)<sup>77</sup> and nitric oxide (NO)<sup>78</sup> have been shown to rapidly and directly increase  $I_{\text{NaL}}$  in experimental conditions, suggesting that peroxylation or nitrosylation of channels may directly alter their inactivation kinetics. Moreover, increased  $\text{Ca}^{2+}$ -Calmodulin<sup>79</sup> and calmodulin kinase II (CaMKII) activity,<sup>27</sup> both common features of myocardial remodelling in HF, have been shown to increase  $I_{\text{NaL}}$ . Recent evidence identified CaMKII-mediated phosphorylation of cardiac  $\text{Na}^+$  channels at multiple sites is the main regulator of  $\text{Na}^+$  channel inactivation.<sup>80</sup> Increased levels of phosphorylation at those sites may therefore be the main responsible for the enhancement of  $I_{\text{NaL}}$  in HF and other diseases. The effects of oxidative stress on  $I_{\text{NaL}}$  also seem to be mediated by enhanced CaMKII-mediated phosphorylation due to the intrinsically active oxidized CamKII.<sup>81</sup> From a molecular standpoint, enhanced  $I_{\text{NaL}}$  in HF is mediated by an increase of bursts and scattered late openings in single  $\text{NaV}1.5$  channels,<sup>37</sup> i.e. the same mechanisms found in normal myocytes, although with higher gating rates. All this suggests that in HF,  $I_{\text{NaL}}$  enhancement is not mediated by expression of different  $\text{Na}^+$  channel isoforms other than  $\text{Nav}1.5$ . In contrast with that,



**Figure 3.** Electromechanical dysfunction and  $\text{Na}^+$  dysregulation in HCM. All panels modified from Coppini et al.<sup>17</sup> (A) Superimposed representative action potentials recorded during stimulation at 0.2 Hz from HCM and control cardiomyocytes. (B) Representative recording from an HCM cardiomyocyte paced at 0.2 Hz, showing EADs. Blue arrows mark EADs. Black lines mark stimuli. (C) Representative  $I_{\text{NaL}}$  traces from control and HCM cardiomyocytes recorded during voltage-clamp (voltage protocol in inset). (D) Representative superimposed  $\text{Ca}_i^{2+}$  transients recorded in current-clamp mode while eliciting action potentials at 0.2 Hz in control and HCM cardiomyocytes. (E) Continuous recordings of  $\text{Ca}_i^{2+}$  transients elicited at 0.2 Hz, 0.5 Hz and 1 Hz frequency of stimulation, from a control (above) and an HCM (below) cardiomyocyte, highlighting the increased diastolic  $[\text{Ca}^{2+}]_i$  upon increase in frequency. (F) Superimposed normalized calcium transients induced by rapid exposure to caffeine, highlighting the slower decay rate in HCM cardiomyocytes and suggesting slower NCX mediated  $\text{Ca}^{2+}$  extrusion. (G) Current density (NCX current) recorded during the caffeine transient is plotted against  $[\text{Ca}^{2+}]_i$  during the decay phase of the transient. Each curve is linearly fitted to calculate the  $[\text{Ca}^{2+}]_i$  level at which NCX current is 0. The representative superimposed traces are derived from the examples in a. In this example, NCX equilibrium is reached when  $[\text{Ca}^{2+}]_i$  is 141 nM in the control cardiomyocyte and 231 nM in the HCM cardiomyocyte. This suggests an increase of intracellular  $[\text{Na}^+]$  in HCM cells.

in a rat model of pressure overload-induced hypertrophy and failure it was shown that the increased  $I_{\text{NaL}}$  is associated with a large up-regulation of neuronal  $\text{Na}^+$  channels (Nav1.1, Nav1.3, and Nav1.6) in the ventricle.<sup>82</sup>

Whatever the reason of  $I_{\text{NaL}}$  enhancement, this condition is always associated with a prolonged repolarisation causing a remarkable increase in AP duration,<sup>72,83</sup> with increased rate-dependent AP shortening and temporal variability of AP duration.<sup>71,84</sup> AP prolongation leads to reduced repolarisation reserve and therefore increased incidence of early afterdepolarizations (EADs, i.e. premature depolarizations occurring during the plateau phase) and potentially fatal arrhythmias.<sup>85</sup> Previously mentioned cardiac conditions, including HF, are all characterized by increased susceptibility to perturbations of repolarisation (e.g. drugs blocking  $\text{K}^+$  currents or electrolyte imbalances) and overall increased risk of arrhythmias.  $I_{\text{NaL}}$  is an inward current occurring during action potential plateau, when the membrane potential is sensitive to small current changes since the stabilizing effect of  $I_{\text{K1}}$  is absent. From this stems the marked slowing effect of increased  $I_{\text{NaL}}$  on the rate of repolarization. A slower

phase 3 repolarization is a strong predictor of arrhythmic risk,<sup>86</sup> likely because it prolongs the time spent in partial refractoriness (the so called “vulnerable window”). The increased rate of EADs in the presence of increased  $I_{NaL}$  is likely a direct consequence of the resulting APD prolongation. Indeed, prolonged plateau phase allows calcium current ( $I_{CaL}$ ) to recover from inactivation and reactivate, thus eliciting the postdepolarization. Prolongation and instability of repolarization in HF is also caused by other electrical abnormalities such as reduction of  $K^+$  currents.<sup>87,88</sup> Due to the reduced repolarizing currents, the effects of  $I_{NaL}$  prolongation are more deleterious in HF than in control myocytes.<sup>26</sup> Thus even a minor inhibition of  $K^+$  currents would result in a severe AP prolongation:  $I_{NaL}$  thus contributes to the increased susceptibility to AP prolonging agents in HF (i.e. reduced repolarization reserve), contributing to drug-induced pro-arrhythmia. So far we have discussed only the potential deleterious electrophysiological consequences of  $I_{NaL}$  augmentation in HF; however, the most severe consequences of the increased  $I_{NaL}$  are associated with intracellular  $Na^+$  overload. The total amount of  $Na^+$  ions entering the cell through  $Na^+$  channels is a function of the current amplitude multiplied by its duration. Though the amplitude of  $I_{NaL}$  is small, it lasts for a very long time when compared to peak current, leading to an increase in  $Na^+$  influx ranging from 50% to 100% of peak  $I_{Na}$  at each activation.<sup>71, 89</sup> Thus,  $I_{NaL}$  may be the main responsible factor for the increased  $[Na^+]_i$  observed in failing myocytes.<sup>7</sup>

### Alterations of NCX and NHE in heart failure

In addition to the excess of  $Na^+$  entering the cell via  $Na^+$  channels, increased  $[Na^+]_i$  in HF may also rely on enhanced  $Na^+$  entry through the NCX or the NHE. As mentioned above, NCX is upregulated in HF and thus can potentially cause increased  $Na^+$  entry, especially if combined with the increased cytosolic  $[Ca^{2+}]$ , which is often seen in failing myocytes due to the increased leakage from the SR. However, the contribution of the increased NCX function to the higher total  $[Na^+]_i$  in HF appears to be minimal,<sup>6</sup> for two main reasons: (i) the absolute of  $Na^+$  ions entering via the exchanger is relatively low and (ii) the increased forward mode activity of the NCX is counterbalanced by an increased reverse mode (see below), which may become relevant in HF. NHE instead is likely to play a more significant role; Baartscher et al.<sup>9</sup> reported that in a rabbit HF model, the increased  $[Na^+]_i$  can be inhibited by blocking the NHE with cariporide. The importance of this mechanisms is confirmed by several reports showing attenuated development of heart failure and related myocardial dysfunction when NHE inhibitors are used.<sup>45,90,91</sup> NHE activity may be increased in HF as a consequence of energetic imbalance leading to intracellular acidosis requiring an increased function of the sarcolemmal proton exchanger.

### Alterations of NKA in heart failure

On top of the increased  $Na^+$  influx, decreased  $Na^+$  efflux may contribute to increased  $[Na^+]_i$  in HF. Several HF models are characterized by decreased global expression or shift in the isoforms of NKA.<sup>91</sup> Most of the studies however have been done on tissue homogenates and may reflect changes of non-cardiomyocyte protein levels.<sup>92</sup> Only a few studies of NKA function have been performed in HF myocytes, and the results are contradictory: in a model of rat post-myocardial infarction HF a reduced activity was reported,<sup>93</sup> while myocytes from a dog model displayed unaltered maximal NKA pump current.<sup>94</sup> Unaltered pump rate with similar  $Na^+$  affinity was also reported in a rabbit HF model<sup>6</sup> and found that both the maximal  $Na^+$  transport rate and the NKA affinity for internal  $Na^+$  were not altered, despite the reduced NKA expression in ventricular myocytes.<sup>92</sup> The presence of unaltered function despite less protein count suggests that NKA activity is regulated differently in HF. Indeed, in HF rabbit myocytes expression of phospholemman (PLM) is reduced,<sup>92</sup> determining lower PLM:NKA ratio; combined with the higher PLM phosphorylation, this results into less overall inhibition of NKA by PLM, explaining the maintained pump function. Similar changes of PLM expression and phosphorylation were also observed in human HF.<sup>92</sup>

### Effects of increased $I_{NaL}$ and $[Na^+]_i$ on cardiomyocyte function

The previous observations on a number of HF models highlight the limited role of NCX and NHE in determining the increased  $Na^+$  entry and the absence of NKA functional alterations reducing global  $Na^+$  efflux. Therefore the major contributor to the increased  $[Na^+]_i$  in HF is the increased  $Na^+$  entry via the late  $Na^+$  current. As detailed above,  $[Na^+]_i$  and  $[Ca^{2+}]_i$  within the myocyte are closely interwoven through the NCX, the major  $Ca^{2+}$ -extrusion mechanism.  $[Na^+]_i$  is notably the main determinant of the overall equilibrium potential of the exchanger ( $E_{NCX}$ ). An increased  $[Na^+]_i$  determines a negative shift of

$E_{NCX}$ , causing less  $Ca^{2+}$  extrusion during diastole (decreased forward mode activity) while causing more  $Ca^{2+}$  influx (increase reverse-mode operation) during the early phase of the action potential, when membrane voltage is above 0 mV.<sup>17</sup> Thus,  $I_{NaL}$  enhancement and the consequent higher  $[Na^+]_i$  may cause intracellular  $Ca^{2+}$  content to rise substantially due to the combined effect of decreased  $Ca^{2+}$  extrusion and increased  $Ca^{2+}$  entry.  $[Ca^{2+}]_i$  overload due to enhancement of  $I_{NaL}$  is very similar to the effects of  $Na^+/K^+$  pump inhibition by digitalis,<sup>95</sup> which leads to increased  $[Na^+]_i$  due to reduced  $Na^+$  efflux.

$[Ca^{2+}]_i$  overload brings about a number of short- and long-term changes of myocardial function.<sup>96,97</sup> On the short-term,  $[Ca^{2+}]_i$  overload leads to generation of delayed afterdepolarizations (DADs) and the resulting “triggered” arrhythmias (see above). Indeed spontaneous  $Ca^{2+}$  release from the SR through RyR channels is facilitated by  $[Ca^{2+}]_i$  overload and higher SR  $Ca^{2+}$  levels.<sup>98</sup> NCX translates the resulting  $Ca^{2+}$  waves into premature depolarizations. In HF, where the RyR is leaky and NCX is overexpressed, the effects of increased  $[Na^+]_i$  and the resulting  $[Ca^{2+}]_i$  overload in determining arrhythmic events are greatly enhanced.

$Ca^{2+}$  overload may also contribute to the slower repolarization in HF and thus affect the higher rate of early-afterdepolarizations (EADs). Indeed increased sub-sarcolemmal  $Ca^{2+}$  during the action potential plateau may reduce  $Ca^{2+}$ -dependent  $K^+$  repolarizing currents (such as  $I_{Kd}$ ),<sup>99</sup> prolonging repolarization. In cardiac tissue, most EADs are preceded by abnormal  $Ca^{2+}$  transients, highlighting the role of  $[Ca^{2+}]_i$  overload in the generation of arrhythmias related to prolonged AP.<sup>100</sup>

Sustained  $[Ca^{2+}]_i$  overload during diastole directly impairs the relaxation rate of the myocardium, determining diastolic dysfunction in HF and cardiac hypertrophy. Increased  $I_{NaL}$  and  $[Na^+]_i$  may significantly contribute to diastolic dysfunction in cardiac diseases with different mechanisms:

- 1) Increased AP duration renders  $Ca^{2+}$  release longer and prolongs contraction: inhomogeneous prolongation of APD will increase variability of twitch duration in the ventricle, leading to uncoordinated relaxation.
- 2) Increased diastolic  $[Ca^{2+}]_i$  leads to slower and incomplete myofilament inactivation and relaxation; this phenomenon is extremely more pronounced at high pacing rates, due to a more marked cytosolic  $Na^+$  and  $Ca^{2+}$  overload. At high pacing rates, the extreme  $[Ca^{2+}]_i$  overload extending throughout the entire diastolic period may severely impair relaxation, effectively provoking contractures.<sup>101</sup>
- 3) Spontaneous  $Ca^{2+}$  releases induced by  $[Ca^{2+}]_i$  overload generate diastolic after-contractions that further impair and delay relaxation.<sup>102</sup>

A further consequence of the impaired diastolic function determined by enhancement of  $I_{NaL}$  and  $[Na^+]_i$  overload is a reduction of myocardial blood flow perfusion. Due extrinsic compression of blood vessels by the contracting muscle,<sup>103</sup> myocardial coronary flow is limited during systole, and reaches a maximum during the initial relaxation phase. In HF, the early diastolic phase (isovolumic relaxation) is slower, due to the delayed decay of cytosolic  $Ca^{2+}$  transient, myofilament force and wall stress. Increased  $I_{NaL}$  may play a significant role in that phenomenon. Indeed, experimental  $I_{NaL}$  enhancement by ATX-II determines reduced coronary blood flow<sup>83</sup> and pharmacological block of  $I_{NaL}$  ameliorates perfusion.<sup>101</sup>

The increase of  $[Na^+]_i$  and the resulting  $[Ca^{2+}]_i$  overload may also affect cardiomyocyte energetics. As detailed above, mitochondrial  $Ca^{2+}$  is essential to maintain cell energy balance. In presence of high cytosolic  $[Na^+]$ , mitochondrial NCX increases  $Ca^{2+}$  extrusion from the mitochondrial matrix, lowering mitochondrial  $[Ca^{2+}]$ . This results in reduced ATP production, thus creating a mismatch between ATP consumption and production.<sup>104</sup> Additionally, high  $[Na^+]_i$  decreases the extrusion of  $H^+$  through the NHE; thus,  $I_{NaL}$  enhancement may also lead to cellular acidosis in HF, with severe effects on cell metabolism.<sup>105</sup>

Finally, chronically increased  $[Ca^{2+}]_i$  due to increased  $I_{NaL}$  and  $[Na^+]_i$  leads to activation of numerous intracellular signaling pathways: increased activity of PKC, CaMKII and calcineurin not only acutely affects  $Ca^{2+}$  homeostasis and membrane currents but may also activate transcriptional factors, ultimately leading to hypertrophic response and accelerating cellular remodelling.<sup>106,107</sup> Hyper-activation of CaMKII can in turn further increases  $I_{NaL}$  (by phosphorylating  $Na^+$  channels) and  $[Ca^{2+}]_i$  (by increasing SR  $Ca^{2+}$  leakage following RyR phosphorylation),<sup>67</sup> creating a vicious circle. In HF and

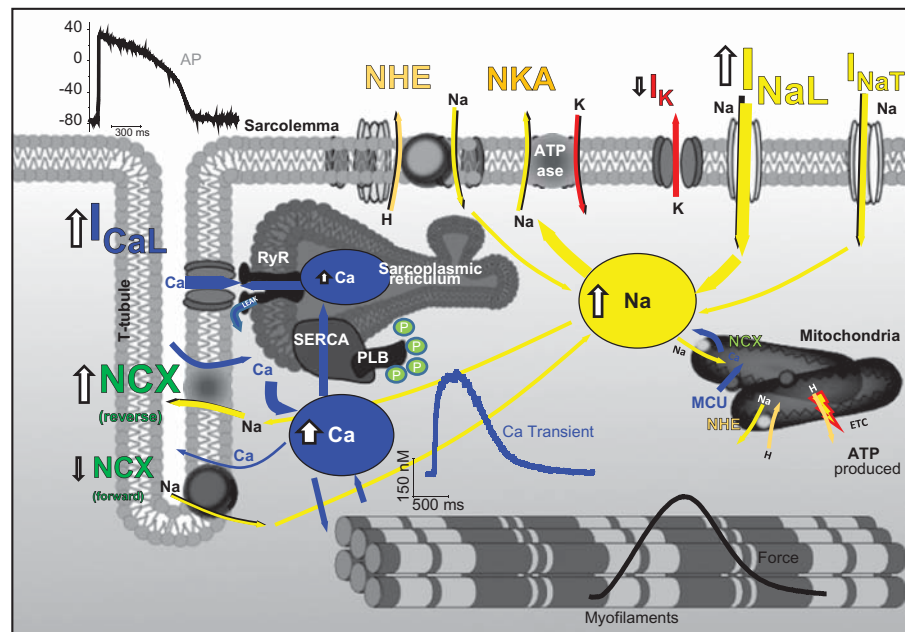
hypertrophy, increased CaMKII activity has a pivotal role in supporting a positive feedback loop between  $I_{NaL}$  and  $[Ca^{2+}]_i$  overload.<sup>27</sup>

In conclusion, increased  $I_{NaL}$  not only directly affects cell electrophysiology but also alters  $Ca^{2+}$  homeostasis with potential consequences for contractile function, cell metabolism and altered cell signaling leading to hypertrophic response.

### NA<sup>+</sup> REGULATION IN HYPERTROPHIC CARDIOMYOPATHY

Hypertrophic cardiomyopathy (HCM) is the most common genetic heart disease,<sup>108,109</sup> with a prevalence in the general population of 1:500, representing a leading cause of sudden cardiac death in the young<sup>109</sup> and a prevalent cause of heart failure and stroke.<sup>110</sup> Increased arrhythmogenesis and diastolic dysfunction are the two main pathophysiological features of this disease.<sup>111</sup>

HCM is associated with a complex electrophysiological cardiomyocyte remodelling involving multiple changes in transmembrane currents ultimately leading to susceptibility to ventricular arrhythmias. We have recently characterized the electrophysiological,  $Ca^{2+}$  handling and contractile abnormalities occurring in human HCM myocardium as concurrent determinants of diastolic dysfunction and arrhythmias in this disease.<sup>17</sup> We used isolated myocytes and intact trabeculae from myocardial specimens from the interventricular septum of HCM patients undergoing surgical myectomy, compared with non-hypertrophic surgical patients. Results of patch clamp studies showed that the action potential duration (APD) recorded at various frequencies of stimulation was markedly prolonged in cardiomyocytes from patients with HCM (HCM cardiomyocytes) compared to controls (Figure 3A). Prolonged APD was associated with prolonged QTc in patients from the HCM group (average QTc = 470 ms). Of note, a recent large-scale study on HCM patients reported that QT prolongation is a common feature in patients with this disease<sup>112</sup> and may be a predictor of clinical outcome. Prolonged APD led to increased risk of early after depolarisations (EADs),<sup>85</sup> which were 6-fold more frequent in HCM cardiomyocytes than in control cells (Figure 3B). Interestingly, the degree of APD prolongation was associated with the frequency of ventricular arrhythmias in patients: patients with severely prolonged APD had a higher frequency of documented non-sustained ventricular tachycardia at 24 h ECG.<sup>17</sup> APD prolongation in HCM cardiomyocytes is determined by an imbalance between inward and outward transmembrane currents: repolarizing  $K^+$  currents were reduced and L-Type  $Ca^{2+}$  current was increased. Importantly, we also observed that the amplitude of  $I_{NaL}$  in HCM cardiomyocytes was larger compared to control patients, likely contributing to APD prolongation (Figure 3C). APD and ion current abnormalities determined significant alterations of intracellular  $Ca^{2+}$  handling in HCM cardiomyocytes (Figure 3D). The amplitude of  $Ca^{2+}$  transients were similar in HCM and in control cardiomyocytes. Conversely, the kinetics of  $Ca^{2+}$  transient, were significantly longer and intracellular diastolic  $Ca^{2+}$  concentration ( $[Ca^{2+}]_i$ ) was markedly higher in HCM compared to control (Figure 3E). Interestingly,  $[Ca^{2+}]_i$  overload was accompanied by an increased rate of spontaneous  $Ca^{2+}$  releases from the SR and DADs in HCM cardiomyocytes, thus contributing to arrhythmogenesis. Additionally, we found a slightly increased SR  $Ca^{2+}$  content in HCM cardiomyocytes while the rate of  $Ca^{2+}$  extrusion via NCX was reduced (Figure 3F). In keeping with this observation, we measured a negative shift of the reversal potential of NCX ( $E_{NCX}$ ) that suggests increased  $[Na^+]_i$  (Figure 3G). Indeed, we reported an increased  $[Na^+]_i$  in HCM myocytes, directly assessed by virtue of fluorescence measurements with Asante Natrium Green 2  $Na^+$ -selective dye. Based on this data, we suggested that in HCM enhanced  $I_{NaL}$ -mediated  $Na^+$  influx leads to a sustained increase in  $[Na^+]_i$ , providing the driving force for an increased rate of  $Ca^{2+}$  entry through NCX, which is also overexpressed. However, increased  $[Na^+]_i$  also impairs forward-mode NCX function, leading to the observed reduction of  $Ca^{2+}$  extrusion rate during caffeine exposure and likely contributing to slow down  $Ca^{2+}$  transient decay and increase diastolic  $[Ca^{2+}]_i$ , in combination with SERCA down regulation. The observed abnormalities of excitation-contraction coupling resulted in slower relaxation and increased diastolic tension in intact trabeculae isolated from the same samples. Interestingly, increased activity of CaMKII appears to underlie several of the observed changes in HCM cardiomyocytes: increased phosphorylation of  $Na^+$  channels determined enhanced  $I_{NaL}$ ,<sup>27,80</sup> while increased RyR phosphorylation caused SR  $Ca^{2+}$  leak and DADs.<sup>66</sup> We concluded that, among the several ion channels and EC-coupling protein changes, increase of  $I_{NaL}$  and  $[Na^+]_i$  overload are major contributors to electro-mechanical cardiomyocyte dysfunction, which may be strongly associated with the increased arrhythmogenesis and diastolic dysfunction observed in HCM patients.  $Na^+$  dysregulation in HCM is described in the cartoon in Figure 4.



**Figure 4.** Na<sup>+</sup> homeostasis in hypertrophic cardiomyopathy. Cartoon showing the cellular and molecular determinants of abnormal Na<sup>+</sup> homeostasis in cardiac cells from HCM patients and their role in determining the dysfunction of Ca<sup>2+</sup> handling and contraction. White thick arrows mark the changes occurring in HCM with respect to control cardiomyocytes. The thickness of yellow and blue arrows has been changed to match the relative changes of Na<sup>+</sup> and Ca<sup>2+</sup> fluxes in HCM vs. control cells. Representative traces from Coppini et al.<sup>17</sup>

#### ROLE OF PHARMACOLOGICAL I<sub>NaL</sub> INHIBITION IN CARDIAC DISEASES

Recent work highlighted the emerging role of I<sub>NaL</sub> in the pathogenesis of HF, hypertrophic cardiomyopathy and other cardiac diseases, making I<sub>NaL</sub> an interesting pharmacological target for disease management. We have previously highlighted the severe consequences of I<sub>NaL</sub> enhancement in terms of arrhythmogenesis and contractile dysfunction. I<sub>NaL</sub> inhibition may therefore improve both electrical and mechanical function of cardiomyocytes in many disease states. Therapeutic I<sub>NaL</sub> inhibition has been attempted in a number of conditions in which I<sub>NaL</sub> is abnormally enhanced, including LQT3, acute ischemia, experimental oxidative stress and heart failure<sup>72,101,113–116</sup>: in all these, I<sub>NaL</sub> block determined shortening of APD, reduced temporal and spatial variability of repolarization and abolished EAD occurrence, highlighting a clear antiarrhythmic effect. Since I<sub>NaL</sub> is carried by cardiac Na<sup>+</sup> channels, all drugs that interact with NaV1.5 channels affect I<sub>NaL</sub>. Indeed late Na<sup>+</sup> current is inhibited by all classical Na<sup>+</sup> channel blockers, comprising not only experimental agents such as Cd<sup>2+</sup>, Tetrodotoxin (TTX) and Saxitoxin (STX),<sup>26,71</sup> but also clinically employed drugs. These include: (i) flecainide,<sup>117,118</sup> which proved effective in shortening APD and reducing EADs in models of Long QT Type 3 (LQT3) syndrome induced by NaV1.5 mutations; (ii) mexiletine,<sup>113,119</sup> which demonstrated a clear ability to prevent the occurrence of arrhythmias induced by experimental APD prolongation and reduced dispersion of repolarization in LQT3<sup>120</sup>; (iii) lidocaine<sup>121</sup> and quinidine,<sup>122</sup> which effectively blocked genetically or experimentally enhanced I<sub>NaL</sub>. However, all of these drugs exert an effective I<sub>NaL</sub> block only at relatively high concentrations; at such concentrations, classical Na<sup>+</sup> channel blockers also strongly inhibit peak Na<sup>+</sup> current with great effects on myocardial excitability and conduction velocity. Under these conditions, the potential anti-arrhythmic effects of I<sub>NaL</sub> block may be overcome by the pro-arrhythmic consequences of the slower conduction.<sup>122</sup> Among classical Na<sup>+</sup> channel blockers, flecainide displays the highest selectivity for the late component of Na<sup>+</sup> current<sup>117</sup>; however, the elevated pro-arrhythmic risk associated with flecainide use in structural heart diseases<sup>123,124</sup> prevents its clinical use in conditions where I<sub>NaL</sub> is enhanced (heart failure, cardiomyopathies). Indeed flecainide, which inhibits peak Na<sup>+</sup> current other than I<sub>NaL</sub>, causes significant conduction delay<sup>125</sup> and has been associated with increased mortality in post-myocardial infarction patients<sup>126</sup>: conduction slowing (induced by I<sub>Na</sub> peak block) combined with reduced refractoriness (due to shorter APD via I<sub>NaL</sub> block) favors reentry circuits.<sup>127</sup>

Amiodarone was shown to have  $I_{Na}$  blockade capacity as an ancillary effect. Interestingly, amiodarone effectively blocked  $I_{NaL}$  in cardiomyocytes from human failing hearts at concentrations as low as  $5 \mu\text{M}$ , i.e. within the therapeutic range of the drug; amiodarone produced almost no effect on the transient  $\text{Na}^+$  current at these concentrations.<sup>128</sup> These results suggest that selective block of  $I_{NaL}$  over peak current may mediate part of the anti-arrhythmic effects of amiodarone and contribute to limit its pro-arrhythmic toxicity, making it a relatively safe drug also in the presence of structural heart disease.<sup>129</sup> However, amiodarone is far from being a selective agent, in that exerts a potent blockade of repolarizing  $\text{K}^+$  currents (mainly  $I_{Kr}$ ), with potential pro-arrhythmic consequences,<sup>130,131</sup> especially when assumed in association with other QT prolonging drugs. As detailed above, in presence of severely increased  $I_{NaL}$ , the APD prolonging effect of  $\text{K}^+$  current blockers is enhanced, raising the risk of proarrhythmic effects.<sup>132,133</sup> From all these observations stems the need of a drug that blocks  $I_{NaL}$  with high selectivity.

Developed in the 1990s as a cardiac specific partial fatty acid oxidation inhibitor, ranolazine was first experimented as a possible anti-anginal compound, with relatively good results. Ranolazine was found to be safe in humans in doses up to 2 grams/day, and it was effective in reducing symptoms in two clinical trials on chronic stable angina patients.<sup>134,135</sup> It rapidly became clear that the anti-anginal and anti-ischemic effects of ranolazine were not due to the supposed metabolic effects (which are negligible at therapeutic concentrations), but rather to its selective blockade of the late sodium current. Its electrophysiological effects were in fact described in 2004<sup>136</sup> Ranolazine exerts an inhibitory effect on  $I_{Kr}$  and a slight  $I_{CaL}$  block<sup>136</sup>; but the main effect was a potent inhibition of  $I_{NaL}$  with small or no effect on peak  $I_{Na}$  within the therapeutic concentration range. Inhibition of  $I_{Kr}$  is generally considered pro-arrhythmic. However, in a large scale trial on non ST-elevation myocardial infarction patients, ranolazine significantly reduced the incidence of ventricular tachycardia<sup>137</sup> and was not associated with QRS prolongation or increased mortality in these patients.<sup>138</sup> Recent work showed that ranolazine inhibits triggered activity and its propagation in pulmonary veins, the main source of atrial ectopies, and reduces afterdepolarizations in atrial myocardium from surgical patients,<sup>139</sup> suggesting that ranolazine may also play a role in the prevention of atrial fibrillation.<sup>140</sup> These observations support the view that  $I_{NaL}$  inhibition by ranolazine may be antiarrhythmic, even in the presence of a limited concomitant block of  $I_{Kr}$ .  $I_{NaL}$ , whose density is highly variable among different layers and regions of the ventricle, strongly contributes to spatial differences in repolarization.  $I_{NaL}$  inhibition is therefore associated with a reduced transmural dispersion of repolarization,<sup>136</sup> contributing to its anti-arrhythmic effects. Ranolazine also inhibits other cardiac currents, including  $I_{CaL}$ ,  $I_{Ks}$ ,  $I_{K1}$ ,  $I_{to}$  and  $I_{NCX}$ .<sup>136</sup> However, except for  $I_{CaL}$ , the concentrations of ranolazine required to inhibit these other ion currents are at least 10-times higher than those required to block  $I_{NaL}$ . Therefore, only inhibition of  $I_{NaL}$ ,  $I_{CaL}$  and  $I_{Kr}$  may contribute to ranolazine effects at therapeutic concentrations. Recently, a newly developed  $I_{NaL}$  inhibitor (GS-458967) was shown to inhibit late current with a higher selectivity as compared with ranolazine, even at 10-times lower concentrations; GS-458967 effectively reduced experimentally induced cellular arrhythmias (EADs and DADs).<sup>141</sup>

We have previously highlighted the multiple deleterious effects of increased  $I_{NaL}$  on cardiomyocyte function.  $I_{NaL}$  inhibition, via reduction of  $\text{Na}^+$  influx, antagonizes  $[\text{Na}^+]_i$  elevation, thus preventing  $[\text{Ca}^{2+}]_i$  overload secondary to  $[\text{Na}^+]_i$  overload. The increased  $[\text{Ca}^{2+}]_i$  in HF and other disease settings can be viewed as a compensatory mechanism for contractile dysfunction. However, it appears that the detrimental consequences of increased  $[\text{Ca}^{2+}]_i$  (i.e. increased SR  $\text{Ca}^{2+}$  leakage, increased diastolic tension) prevail over the advantages. Indeed, ranolazine abolished the occurrence of spontaneous after-contractions and reduced diastolic tension without decreasing contractility in myocytes and intact trabeculae from human and rat failing hearts.<sup>60,115</sup> Reduction of  $[\text{Ca}^{2+}]_i$  should improve diastolic function but also impair systolic contraction. Instead, in diseased myocytes ranolazine only reduced diastolic  $[\text{Ca}^{2+}]_i$  without affecting neither the  $[\text{Ca}^{2+}]_i$  transient amplitude nor SR  $\text{Ca}^{2+}$  content,<sup>60</sup> explaining the global amelioration of the contractile profile seen in intact muscle, especially at higher stimulation rates. The reason why ranolazine is able to differently modulate diastolic  $[\text{Ca}^{2+}]_i$  and SR  $\text{Ca}^{2+}$  is the concomitant reduction of  $\text{Ca}^{2+}$  leak from the SR.<sup>142</sup> When the lower  $[\text{Na}^+]_i$  leads to decreased  $[\text{Ca}^{2+}]_i$ , the resulting reduction of leak may improve the ability of the SR to reuptake  $\text{Ca}^{2+}$ , thus preserving integrity of  $\text{Ca}^{2+}$  store.

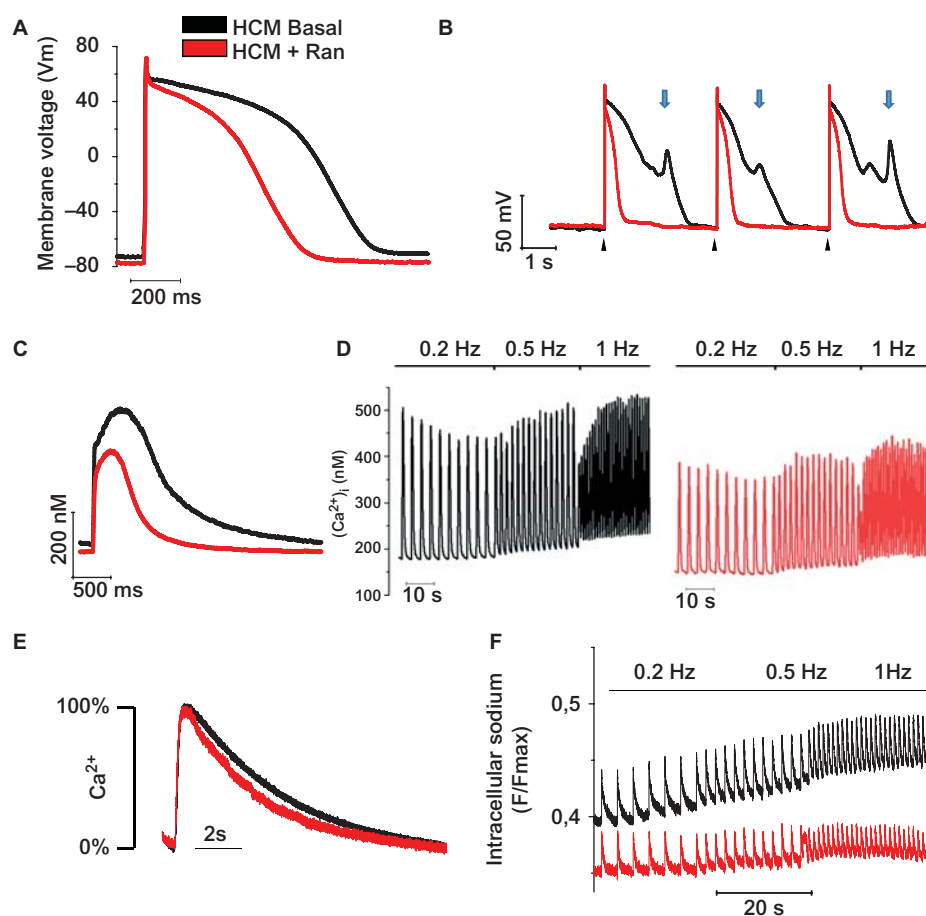
$I_{NaL}$  inhibition has marked cardioprotective effects in conditions of myocardial ischemia, when increased activity of the NHE leads to increased  $\text{Na}^+$  influx.<sup>143</sup> Inhibition of  $I_{NaL}$  may improve intracellular pH homeostasis by allowing a maintained rate of proton extrusion via the NHE. Finally,

recent observations indicate that  $I_{NaL}$  inhibition, via amelioration of relaxation and reduction of end-diastolic pressure, may significantly enhance coronary blood flow, especially in ischemic conditions.<sup>83</sup>

In keeping with the favorable mechanical consequences of  $I_{NaL}$  inhibition, ranolazine, unlike other anti-ischemic drugs, does not decrease the “double product” of arterial pressure and heart rate which is a valuable measurement of cardiac overall mechanical work.<sup>144</sup> In conclusion, recent evidence support the assumption that ranolazine markedly improves the contractile efficiency of diseased myocardium and increases coronary blood flow, independently of changes in cardiac work.

### $I_{NaL}$ INHIBITION REVERSES ELECTRO-MECHANICAL DYSFUNCTION IN HYPERTROPHIC CARDIOMYOPATHY

Among the several changes identified in cellular electrophysiology and  $Ca^{2+}$  handling in our recent study on human HCM cardiomyocytes,<sup>17</sup> we found that the increased late sodium current is amenable for a targeted correction by virtue of the selective blocker ranolazine. Since  $I_{NaL}$  is potentially involved

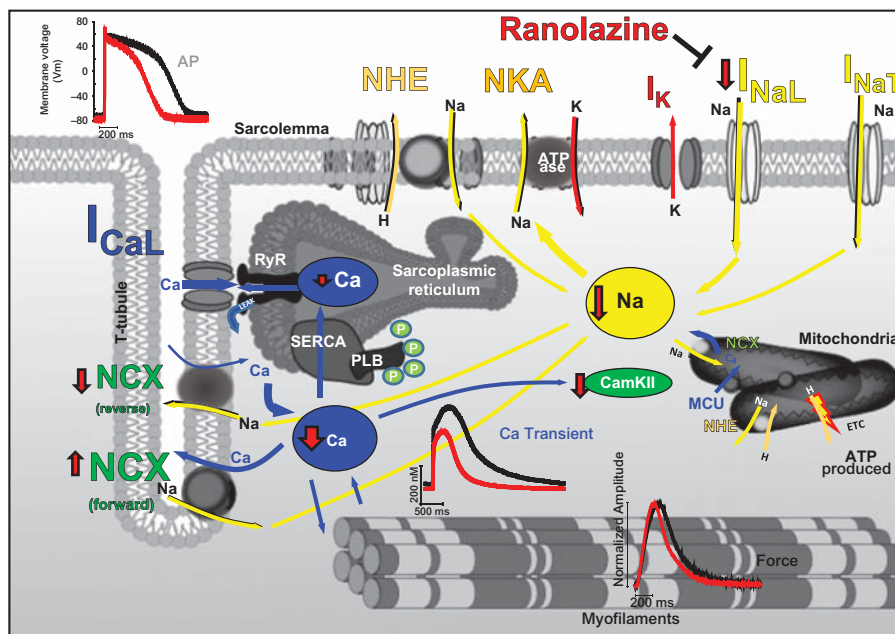


**Figure 5.** Late sodium current inhibition reverses electro-mechanical dysfunction in HCM. All panels are modified from Coppini et al.<sup>17</sup> (A) Action potentials at 0.2 Hz from an HCM cardiomyocyte before (Basal) and after exposure to 10  $\mu$ M/L ranolazine (Ran). (B) Representative trace from a HCM cardiomyocyte in the absence of ranolazine showing multiple early after depolarizations (EADs), marked by blue arrows. A trace from the same cardiomyocyte in the presence of ranolazine is shown superimposed in red: the drug abolishes EADs. Black arrowheads mark stimuli. (C) Superimposed representative  $Ca^{2+}$  transients at 0.2 Hz from an HCM cardiomyocyte (same as A) at baseline and with ranolazine. (D) Trains of  $Ca^{2+}$  transients elicited at 0.2, 0.5, and 1 Hz in an HCM myocyte before (left) and following (right) exposure to ranolazine, highlighting reduction of diastolic  $[Ca^{2+}]_i$ . (E) Superimposed caffeine-induced calcium transients in the absence and presence of Ran in a HCM cardiomyocyte, highlighting the faster time constant ( $\tau$ ) of caffeine-induced  $Ca^{2+}$  transient decay, suggesting higher rate of NCX-mediated  $Ca^{2+}$  extrusion. (F) Effects of ranolazine on intracellular  $Na^+$ . Representative traces of Asante Natrium Green fluorescence, recorded at stimulation rates of 0.2 Hz, 0.5 Hz and 1 Hz in the absence (black) and presence (red) of 10  $\mu$ M Ran.

both in determining APD prolongation and  $\text{Ca}^{2+}$  handling abnormalities leading to abnormal relaxation,  $I_{\text{NaL}}$  inhibition is expected to positively affect both. In control cardiomyocytes, ranolazine ( $10 \mu\text{M}$ ) did not significantly affect the APD and the effects of ranolazine on the amplitude and kinetics of  $\text{Ca}_i^{2+}$  transients were negligible. On the contrary, ranolazine significantly reduced APD in HCM cardiomyocytes (Figure 5A). Consistently, the occurrence of EADs in HCM cardiomyocytes was approximately halved by the application of ranolazine (Figure 5B). We found that ranolazine  $10 \mu\text{M}$  markedly blocked  $I_{\text{NaL}}$  in HCM myocytes, confirming that the described effects of the drug are consistent with specific  $I_{\text{NaL}}$  inhibition. In HCM cardiomyocytes, the APD shortening by ranolazine was paralleled by accelerated rise and decay time of  $\text{Ca}_i^{2+}$  transients, associated with no significant decrease of  $\text{Ca}_i^{2+}$  transient amplitude (Figure 5C). Ranolazine significantly reduced intracellular diastolic  $[\text{Ca}^{2+}]_i$  in HCM myocytes and attenuated the increase in diastolic  $[\text{Ca}^{2+}]_i$  following increase in stimulation rate (Figure 5D). In agreement with these results, we found that ranolazine slightly reduced SR  $\text{Ca}^{2+}$ -load in HCM myocytes and significantly accelerated caffeine-induced  $\text{Ca}_i^{2+}$  transients, suggesting an increased rate of  $\text{Ca}^{2+}$ -extrusion through the NCX upon exposure to the drug (Figure 5E). The beneficial consequences of  $I_{\text{NaL}}$  inhibition on  $\text{Ca}^{2+}$  handling in HCM cardiomyocytes were mediated by a marked reduction of  $[\text{Na}^+]_i$ , as confirmed by direct assessment using  $\text{Na}^+$ -selective fluorescent indicators (Figure 5F). Reduced  $[\text{Na}^+]_i$  shifted  $E_{\text{NCX}}$  back to positive levels, potentiating forward mode operation of the NCX.

The beneficial effect of ranolazine was finally investigated in intact tissue measuring isometric twitch tension from intact ventricular trabeculae.<sup>17</sup> Ranolazine, speeded up the kinetics of force development and shortened the overall twitch duration. Further, it significantly diminished the rise of diastolic tension upon increase in stimulation frequency, without significantly reducing peak isometric (active) force. According to our results, by reducing  $[\text{Na}^+]_i$  overload, and thus diastolic  $[\text{Ca}^{2+}]_i$ , ranolazine has the potential to improve diastolic function, a cause of symptoms in most HCM patients, and to indirectly improve myocardial perfusion, thus impacting on functional limitation and quality of life. Taken together these results highlight the great potential of  $I_{\text{NaL}}$  inhibition for the reduction of arrhythmias and diastolic dysfunction in HCM patients.

In the long term, the effect on calcium homeostasis is expected to down regulate a number of remodelling pathways that strictly depend on myocyte driven signalling: this may in turn bring benefit to extracellular matrix remodelling, reducing fibroblasts growth and collagen production in



**Figure 6.** Effects of  $I_{\text{NaL}}$  inhibition in HCM. Cartoon showing the cellular and molecular determinants of the effects of  $I_{\text{NaL}}$  inhibition in HCM cardiac cells and their role in determining the ameliorated  $\text{Ca}^{2+}$  handling and contraction in presence of the ranolazine. Red thick arrows mark the changes occurring in HCM in the presence of ranolazine with respect to the baseline condition. Representative traces from Coppini et al.<sup>17</sup> Baseline traces are black and the corresponding traces in the presence of ranolazine are red.

hypertrophied myocardium. In particular, reduction of intracellular  $\text{Ca}^{2+}$  overload, may lead to sustained lower CaMKII activity, eventually affecting the functional and structural remodelling of HCM myocardium, with possible implications for disease progression.<sup>145</sup> In keeping with this observation, ranolazine administration has been shown to reduce the degree of myocyte hypertrophy and interstitial fibrosis in experimental hypertrophy models.<sup>146</sup> Thus, late sodium current inhibition in HCM may be capable of preventing disease progression towards the end-stage phase, by acting upon one of its most critical determinants – diastolic dysfunction, myocardial ischemia and fibrosis. In principle, late sodium current inhibition is the ideal therapeutic strategy for HCM patients, with a wide range of positive actions, which may have a critical impact on acute symptoms as well as on the natural history of the disease. The effects of ranolazine on HCM cardiomyocytes and the role of CaMKII are summarized in Figure 6.

## CONCLUSIONS

The numerous ion transport pathways involved in the regulation of  $[\text{Na}^+]_i$  are critical in mediating both contractile and electrical activity of cardiac myocytes.  $[\text{Na}^+]_i$  regulation and  $[\text{Ca}^{2+}]_i$  homeostasis are highly interdependent, and the delicate dynamic interplay of  $[\text{Ca}^{2+}]_i$  and  $[\text{Na}^+]_i$  is deeply impaired in pathophysiological situations such as heart failure and hypertrophic cardiomyopathy, contributing to contractile dysfunction and arrhythmogenesis. The progressive clarification of the involvement of  $I_{\text{NaL}}$  in the pathogenesis of  $\text{Na}^+$  and  $\text{Ca}^{2+}$  overload has rendered this current an appealing pharmacological target. The most significant advantage of  $I_{\text{NaL}}$  inhibition is its potential to simultaneously target the consequences of disease-related functional changes (e.g., arrhythmias and contractile dysfunction) as well as the mechanisms underlying its progression (e.g., myocardial remodelling, ischemia). The potential therapeutic value of  $I_{\text{NaL}}$  inhibition discussed in this review, in particular in heart failure and hypertrophic cardiomyopathy, still awaits confirmation from clinical trials. Whereas  $I_{\text{NaL}}$  inhibitors have a proven efficacy in patients with ischemic heart disease, confirmed by clinical trials, the most attractive clinical applications of  $I_{\text{NaL}}$  inhibition, heart failure and hypertrophy, remain largely unexplored and deserve further pre-clinical and clinical investigation.

## REFERENCES

- [1] Murphy E, Eisner DA. Regulation of intracellular and mitochondrial sodium in health and disease. *Circ Res*. 2009;104:292–303.
- [2] Pike MM, Kitakaze M, Marban E.  $^{23}\text{Na}$ -NMR measurements of intracellular sodium in intact perfused ferret hearts during ischemia and reperfusion. *Am J Physiol*. 1990;259:H1767–H1773.
- [3] Butwell NB, Ramasamy R, Lazar I, Sherry AD, Malloy CR. Effect of lidocaine on contracture, intracellular sodium, and pH in ischemic rat hearts. *Am J Physiol*. 1993;264:H1884–H1889.
- [4] Donoso P, Mill JG, O'Neill SC, Eisner DA. Fluorescence measurements of cytoplasmic and mitochondrial sodium concentration in rat ventricular myocytes. *J Physiol*. 1992;448:493–509.
- [5] Haigney MC, Lakatta EG, Stern MD, Silverman HS. Sodium channel blockade reduces hypoxic sodium loading and sodium-dependent calcium loading. *Circulation*. 1994;90:391–399.
- [6] Despa S, Islam MA, Weber CR, Pogwizd SM, Bers DM. Intracellular  $\text{Na}^+$  concentration is elevated in heart failure but  $\text{Na}^+/\text{K}^+$  pump function is unchanged. *Circulation*. 2002;105:2543–2548.
- [7] Pieske B, Houser SR.  $[\text{Na}^+]_i$  handling in the failing human heart. *Cardiovasc Res*. 2003;57:874–886.
- [8] Pogwizd SM, Sipido KR, Verdonck F, Bers DM. Intracellular  $\text{Na}^+$  in animal models of hypertrophy and heart failure: contractile function and arrhythmogenesis. *Cardiovasc Res*. 2003;57:887–896.
- [9] Baartscheer A, Schumacher CA, van Borren MM, Belterman CN, Coronel R, Fiolet JW. Increased  $\text{Na}^+/\text{H}^+$  -exchange activity is the cause of increased  $[\text{Na}^+]_i$  and underlies disturbed calcium handling in the rabbit pressure and volume overload heart failure model. *Cardiovasc Res*. 2003;57:1015–1024.
- [10] Bers DM, Despa S. Cardiac myocytes  $\text{Ca}^{2+}$  and  $\text{Na}^+$  regulation in normal and failing hearts. *J Pharmacol Sci*. 2006;100:315–322.
- [11] Zaza A, Belardinelli L, Shryock JC. Pathophysiology and pharmacology of the cardiac “late sodium current.”. *Pharmacol Ther*. 2008;119:326–339.
- [12] Ellis D. The effects of external cations and ouabain on the intracellular sodium activity of sheep heart Purkinje fibres. *J Physiol*. 1977;273:211–240.
- [13] Minta A, Tsien RY. Fluorescent indicators for cytosolic sodium. *J Biol Chem*. 1989;264:19449–19457.
- [14] Turvey SE, Allen DG. Changes in myoplasmic sodium concentration during exposure to lactate in perfused rat heart. *Cardiovasc Res*. 1994;28:987–993.
- [15] Poburko D, Liao CH, Lemos VS, Lin E, Maruyama Y, Cole WC, van Breemen C. Transient receptor potential channel 6-mediated, localized cytosolic  $[\text{Na}^+]_i$  transients drive  $\text{Na}^+/\text{Ca}^{2+}$  exchanger-mediated  $\text{Ca}^{2+}$  entry in purinergically stimulated aorta smooth muscle cells. *Circ Res*. 2007;101:1030–1038.
- [16] Ma J, Luo A, Wu L, Wan W, Zhang P, Ren Z, Zhang S, Qian C, Shryock JC, Belardinelli L. Calmodulin kinase II and protein kinase C mediate the effect of increased intracellular calcium to augment late sodium current in rabbit ventricular myocytes. *Am J Physiol Cell Physiol*. 2012;302:C1141–C1151.

- [17] Coppini R, Ferrantini C, Yao L, Fan P, Del Lungo M, Stillitano F, Sartiani L, Tosi B, Suffredini S, Tesi C, Yacoub M, Olivetto I, Belardinelli L, Poggesi C, Cerbai E, Mugelli A. Late sodium current inhibition reverses electromechanical dysfunction in human hypertrophic cardiomyopathy. *Circulation*. 2013;127:575–584.
- [18] Cerbai E, Sartiani L, DePaoli P, Pino R, Maccherini M, Bizzarri F, DiCiolla F, Davoli G, Sani G, Mugelli A. The properties of the pacemaker current I(F) in human ventricular myocytes are modulated by cardiac disease. *J Mol Cell Cardiol*. 2001;33:441–448.
- [19] Haufe V, Chamberland C, Dumaine R. The promiscuous nature of the cardiac sodium current. *J Mol Cell Cardiol*. 2007;42:469–477.
- [20] Maier SK, Westenbroek RE, Schenkman KA, Feigl EO, Scheuer T, Catterall WA. An unexpected role for brain-type sodium channels in coupling of cell surface depolarization to contraction in the heart. *Proc Natl Acad Sci U S A*. 2002;99:4073–4078.
- [21] Brette F, Orchard CH. No apparent requirement for neuronal sodium channels in excitation-contraction coupling in rat ventricular myocytes. *Circ Res*. 2006;98:667–674.
- [22] Bokenes J, Sjaastad I, Sejersted OM. Artifactual contractions triggered by field stimulation of cardiomyocytes. *J Appl Physiol*. 2005;98:1712–1719.
- [23] Coraboeuf E, Deroubaix E, Coulombe A. Effect of tetrodotoxin on action potentials of the conducting system in the dog heart. *Am J Physiol*. 1979;236:H561–H567.
- [24] January CT, Riddle JM. Early afterdepolarizations: mechanism of induction and block. A role for L-type Ca<sup>2+</sup> current. *Circ Res*. 1989;64:977–990.
- [25] Zeng J, Rudy Y. Early afterdepolarizations in cardiac myocytes: mechanism and rate dependence. *Biophys J*. 1995;68:949–964.
- [26] Maltsev VA, Sabbah HN, Higgins RS, Silverman N, Lesch M, Undrovinas AI. Novel, ultraslow inactivating sodium current in human ventricular cardiomyocytes. *Circulation*. 1998;98:2545–2552.
- [27] Wagner S, Dybkova N, Rasenack EC, Jacobshagen C, Fabritz L, Kirchhof P, Maier SK, Zhang T, Hasenfuss G, Brown JH, Bers DM, Maier LS. Ca<sup>2+</sup>/calmodulin-dependent protein kinase II regulates cardiac Na<sup>+</sup> channels. *J Clin Invest*. 2006;116:3127–3138.
- [28] Wang DW, Yazawa K, George AL Jr, Bennett PB. Characterization of human cardiac Na<sup>+</sup> channel mutations in the congenital long QT syndrome. *Proc Natl Acad Sci U S A*. 1996;93:13200–13205.
- [29] Le Grand B, Coulombe A, John GW. Late sodium current inhibition in human isolated cardiomyocytes by R 56865. *J Cardiovasc Pharmacol*. 1998;31:800–804.
- [30] Persson F, Andersson B, Duker G, Jacobson I, Carlsson L. Functional effects of the late sodium current inhibition by AZD7009 and lidocaine in rabbit isolated atrial and ventricular tissue and Purkinje fibre. *Eur J Pharmacol*. 2007;558:133–143.
- [31] Wasserstrom JA, Salata JJ. Basis for tetrodotoxin and lidocaine effects on action potentials in dog ventricular myocytes. *Am J Physiol*. 1988;254:H1157–H1166.
- [32] Sakmann BF, Spindler AJ, Bryant SM, Linz KW, Noble D. Distribution of a persistent sodium current across the ventricular wall in guinea pigs. *Circ Res*. 2000;87:910–914.
- [33] Zilberter Yu I, Starmer CF, Starobin J, Grant AO. Late Na channels in cardiac cells: the physiological role of background Na channels. *Biophys J*. 1994;67:153–160.
- [34] Zygmunt AC, Eddlestone GT, Thomas GP, Nesterenko VV, Antzelevitch C. Larger late sodium conductance in M cells contributes to electrical heterogeneity in canine ventricle. *Am J Physiol Heart Circ Physiol*. 2001;281:H689–H697.
- [35] Baruscotti M, DiFrancesco D, Robinson RB. Na<sup>(+)</sup> current contribution to the diastolic depolarization in newborn rabbit SA node cells. *Am J Physiol Heart Circ Physiol*. 2000;279:H2303–H2309.
- [36] Berecki G, Zegers JG, Bhuiyan ZA, Verkerk AO, Wilders R, van Ginneken AC. Long-QT syndrome-related sodium channel mutations probed by the dynamic action potential clamp technique. *J Physiol*. 2006;570:237–250.
- [37] Maltsev VA, Undrovinas AI. A multi-modal composition of the late Na<sup>+</sup> current in human ventricular cardiomyocytes. *Cardiovasc Res*. 2006;69:116–127.
- [38] Biet M, Barajas-Martinez H, Ton AT, Delabre JF, Morin N, Dumaine R. About half of the late sodium current in cardiac myocytes from dog ventricle is due to non-cardiac-type Na<sup>(+)</sup> channels. *J Mol Cell Cardiol*. 2012;53:593–598.
- [39] Blaustein MP, Lederer WJ. Sodium/calcium exchange: its physiological implications. *Physiol Rev*. 1999;79:763–854.
- [40] Barceñas-Ruiz L, Wier WG. Voltage dependence of intracellular [Ca<sup>2+</sup>]<sub>i</sub> transients in guinea pig ventricular myocytes. *Circ Res*. 1987;61:148–154.
- [41] Philipson KD, Bersohn MM, Nishimoto AY. Effects of pH on Na<sup>+</sup>-Ca<sup>2+</sup> exchange in canine cardiac sarcolemmal vesicles. *Circ Res*. 1982;50:287–293.
- [42] Hilgemann DW. Regulation and deregulation of cardiac Na<sup>(+)</sup>-Ca<sup>2+</sup> exchange in giant excised sarcolemmal membrane patches. *Nature*. 1990;344:242–245.
- [43] Slepikov ER, Rainey JK, Sykes BD, Fliegel L. Structural and functional analysis of the Na<sup>+</sup>/H<sup>+</sup> exchanger. *Biochem J*. 2007;401:623–633.
- [44] Avkiran M, Cook AR, Cuello F. Targeting Na<sup>+</sup>/H<sup>+</sup> exchanger regulation for cardiac protection: a RSKy approach? *Curr Opin Pharmacol*. 2008;8:133–140.
- [45] Karmazyn M, Kilic A, Javadov S. The role of NHE-1 in myocardial hypertrophy and remodelling. *J Mol Cell Cardiol*. 2008;44:647–653.
- [46] Vaughan-Jones RD, Villafuerte FC, Swietach P, Yamamoto T, Rossini A, Spitzer KW. pH-Regulated Na<sup>(+)</sup> influx into the mammalian ventricular myocyte: the relative role of Na<sup>(+)</sup>-H<sup>(+)</sup> exchange and Na<sup>(+)</sup>-HCO<sup>-</sup> Co-transport. *J Cardiovasc Electrophysiol*. 2006;17(Suppl 1):S134–S140.
- [47] McDonough AA, Velotta JB, Schwinger RH, Philipson KD, Farley RA. The cardiac sodium pump: structure and function. *Basic Res Cardiol*. 2002;97(Suppl 1):119–124.
- [48] Presti CF, Jones LR, Lindemann JP. Isoproterenol-induced phosphorylation of a 15-kilodalton sarcolemmal protein in intact myocardium. *J Biol Chem*. 1985;260:3860–3867.

- [49] Despa S, Bossuyt J, Han F, Ginsburg KS, Jia LG, Kutchai H, Tucker AL, Bers DM. Phospholemman-phosphorylation mediates the beta-adrenergic effects on Na/K pump function in cardiac myocytes. *Circ Res*. 2005;97:252–259.
- [50] Jung DW, Apel LM, Brierley GP. Transmembrane gradients of free Na<sup>+</sup> in isolated heart mitochondria estimated using a fluorescent probe. *Am J Physiol*. 1992;262:C1047–C1055.
- [51] Kim B, Matsuoka S. Cytoplasmic Na<sup>+</sup>-dependent modulation of mitochondrial Ca<sup>2+</sup> via electrogenic mitochondrial Na<sup>+</sup>-Ca<sup>2+</sup> exchange. *J Physiol*. 2008;586:1683–1697.
- [52] Jung DW, Baysal K, Brierley GP. The sodium-calcium antiport of heart mitochondria is not electroneutral. *J Biol Chem*. 1995;270:672–678.
- [53] Cortassa S, Aon MA, Marban E, Winslow RL, O'Rourke B. An integrated model of cardiac mitochondrial energy metabolism and calcium dynamics. *Biophys J*. 2003;84:2734–2755.
- [54] Baysal K, Jung DW, Gunter KK, Gunter TE, Brierley GP. Na<sup>+</sup>-dependent Ca<sup>2+</sup> efflux mechanism of heart mitochondria is not a passive Ca<sup>2+</sup>/2Na<sup>+</sup> exchanger. *Am J Physiol*. 1994;266:C800–C808.
- [55] Dash RK, Beard DA. Analysis of cardiac mitochondrial Na<sup>+</sup>-Ca<sup>2+</sup> exchanger kinetics with a biophysical model of mitochondrial Ca<sup>2+</sup> handling suggests a 3:1 stoichiometry. *J Physiol*. 2008;586:3267–3285.
- [56] McCormack JG, Halestrap AP, Denton RM. Role of calcium ions in regulation of mammalian intramitochondrial metabolism. *Physiol Rev*. 1990;70:391–425.
- [57] Schreier JH, Figueredo VM, Miyamae M, Shames DM, Baker AJ, Camacho SA. Cytosolic and mitochondrial [Ca<sup>2+</sup>] in whole hearts using indo-1 acetoxymethyl ester: effects of high extracellular Ca<sup>2+</sup>. *Biophys J*. 1996;70:2571–2580.
- [58] Territo PR, Mootha VK, French SA, Balaban RS. Ca<sup>2+</sup> activation of heart mitochondrial oxidative phosphorylation: role of the F<sub>0</sub>/F<sub>1</sub>-ATPase. *Am J Physiol Cell Physiol*. 2000;278:C423–C435.
- [59] Beuckelmann DJ, Nabauer M, Erdmann E. Intracellular calcium handling in isolated ventricular myocytes from patients with terminal heart failure. *Circulation*. 1992;85:1046–1055.
- [60] Sossalla S, Wagner S, Rasenack EC, Ruff H, Weber SL, Schondube FA, Tirilomis T, Tenderich G, Hasenfuss G, Belardinelli L, Maier LS. Ranolazine improves diastolic dysfunction in isolated myocardium from failing human hearts—role of late sodium current and intracellular ion accumulation. *J Mol Cell Cardiol*. 2008;45:32–43.
- [61] Hasenfuss G, Pieske B. Calcium cycling in congestive heart failure. *J Mol Cell Cardiol*. 2002;34:951–969.
- [62] Dash R, Frank KF, Carr AN, Moravec CS, Kranias EG. Gender influences on sarcoplasmic reticulum Ca<sup>2+</sup>-handling in failing human myocardium. *J Mol Cell Cardiol*. 2001;33:1345–1353.
- [63] Schwinger RH, Munch G, Bolck B, Karczewski P, Krause EG, Erdmann E. Reduced Ca<sup>2+</sup>-sensitivity of SERCA 2a in failing human myocardium due to reduced serin-16 phospholamban phosphorylation. *J Mol Cell Cardiol*. 1999;31:479–491.
- [64] Pogwizd SM, Schlotthauer K, Li L, Yuan W, Bers DM. Arrhythmogenesis and contractile dysfunction in heart failure: roles of sodium-calcium exchange, inward rectifier potassium current, and residual beta-adrenergic responsiveness. *Circ Res*. 2001;88:1159–1167.
- [65] Hasenfuss G, Schillinger W, Lehnart SE, Preuss M, Pieske B, Maier LS, Prestle J, Minami K, Just H. Relationship between Na<sup>+</sup>-Ca<sup>2+</sup>-exchanger protein levels and diastolic function of failing human myocardium. *Circulation*. 1999;99:641–648.
- [66] Shannon TR, Pogwizd SM, Bers DM. Elevated sarcoplasmic reticulum Ca<sup>2+</sup> leak in intact ventricular myocytes from rabbits in heart failure. *Circ Res*. 2003;93:592–594.
- [67] Maier LS, Zhang T, Chen L, DeSantiago J, Brown JH, Bers DM. Transgenic CaMKII $\delta$ C overexpression uniquely alters cardiac myocyte Ca<sup>2+</sup> handling: reduced SR Ca<sup>2+</sup> load and activated SR Ca<sup>2+</sup> release. *Circ Res*. 2003;92:904–911.
- [68] Bennett PB, Yazawa K, Makita N, George AL Jr. Molecular mechanism for an inherited cardiac arrhythmia. *Nature*. 1995;376:683–685.
- [69] Mohler PJ, Schott JJ, Gramolini AO, Dilly KW, Guatimosim S, duBell WH, Song LS, Haurogne K, Kyndt F, Ali ME, Rogers TB, Lederer WJ, Escande D, Le Marec H, Bennett V. Ankyrin-B mutation causes type 4 long-QT cardiac arrhythmia and sudden cardiac death. *Nature*. 2003;421:634–639.
- [70] Vatta M, Ackerman MJ, Ye B, Makielski JC, Ughanze EE, Taylor EW, Tester DJ, Balijepalli RC, Foell JD, Li Z, Kamp TJ, Towbin JA. Mutant caveolin-3 induces persistent late sodium current and is associated with long-QT syndrome. *Circulation*. 2006;114:2104–2112.
- [71] Maltsev VA, Silverman N, Sabbah HN, Undrovinas AI. Chronic heart failure slows late sodium current in human and canine ventricular myocytes: implications for repolarization variability. *Eur J Heart Fail*. 2007;9:219–227.
- [72] Undrovinas AI, Maltsev VA, Sabbah HN. Repolarization abnormalities in cardiomyocytes of dogs with chronic heart failure: role of sustained inward current. *Cell Mol Life Sci*. 1999;55:494–505.
- [73] Valdivia CR, Chu WW, Pu J, Foell JD, Haworth RA, Wolff MR, Kamp TJ, Makielski JC. Increased late sodium current in myocytes from a canine heart failure model and from failing human heart. *J Mol Cell Cardiol*. 2005;38:475–483.
- [74] Huang B, El-Sherif T, Gidh-Jain M, Qin D, El-Sherif N. Alterations of sodium channel kinetics and gene expression in the postinfarction remodeled myocardium. *J Cardiovasc Electrophysiol*. 2001;12:218–225.
- [75] Fearon IM, Brown ST. Acute and chronic hypoxic regulation of recombinant hNa(v)1.5 alpha subunits. *Biochem Biophys Res Commun*. 2004;324:1289–1295.
- [76] Gautier M, Zhang H, Fearon IM. Peroxynitrite formation mediates LPC-induced augmentation of cardiac late sodium currents. *J Mol Cell Cardiol*. 2008;44:241–251.
- [77] Undrovinas AI, Fleidervish IA, Makielski JC. Inward sodium current at resting potentials in single cardiac myocytes induced by the ischemic metabolite lysophosphatidylcholine. *Circ Res*. 1992;71:1231–1241.
- [78] Xie LH, Chen F, Karagueuzian HS, Weiss JN. Oxidative-stress-induced afterdepolarizations and calmodulin kinase II signaling. *Circ Res*. 2009;104:79–86.
- [79] Tan HL, Kupersmidt S, Zhang R, Stepanovic S, Roden DM, Wilde AA, Anderson ME, Balsler JR. A calcium sensor in the sodium channel modulates cardiac excitability. *Nature*. 2002;415:442–447.

- [80] Ashpole NM, Herren AW, Ginsburg KS, Brogan JD, Johnson DE, Cummins TR, Bers DM, Hudmon A.  $Ca^{2+}$ /calmodulin-dependent protein kinase II (CaMKII) regulates cardiac sodium channel NaV1.5 gating by multiple phosphorylation sites. *J Biol Chem*. 2012;287:19856–19869.
- [81] Wagner S, Ruff HM, Weber SL, Bellmann S, Sowa T, Schulte T, Anderson ME, Grandi E, Bers DM, Backs J, Belardinelli L, Maier LS. Reactive oxygen species-activated Ca/calmodulin kinase II $\delta$  is required for late I(Na) augmentation leading to cellular Na and Ca overload. *Circ Res*. 2011;108:555–565.
- [82] Xi Y, Wu G, Yang L, Han K, Du Y, Wang T, Lei X, Bai X, Ma A. Increased late sodium currents are related to transcription of neuronal isoforms in a pressure-overload model. *Eur J Heart Fail*. 2009;11:749–757.
- [83] Belardinelli L, Shryock JC, Fraser H. Inhibition of the late sodium current as a potential cardioprotective principle: effects of the late sodium current inhibitor ranolazine. *Heart*. 2006;92(Suppl 4):iv6–iv14.
- [84] Tian XL, Yong SL, Wan X, Wu L, Chung MK, Tchou PJ, Rosenbaum DS, Van Wagoner DR, Kirsch GE, Wang Q. Mechanisms by which SCN5A mutation N1325S causes cardiac arrhythmias and sudden death in vivo. *Cardiovasc Res*. 2004;61:256–267.
- [85] Antzelevitch C, Belardinelli L. The role of sodium channel current in modulating transmural dispersion of repolarization and arrhythmogenesis. *J Cardiovasc Electrophysiol*. 2006;17(Suppl 1):S79–S85.
- [86] Hondeghem LM, Carlsson L, Duker G. Instability and triangulation of the action potential predict serious proarrhythmia, but action potential duration prolongation is antiarrhythmic. *Circulation*. 2001;103:2004–2013.
- [87] Tomaselli GF, Beuckelmann DJ, Calkins HG, Berger RD, Kessler PD, Lawrence JH, Kass D, Feldman AM, Marban E. Sudden cardiac death in heart failure. The role of abnormal repolarization. *Circulation*. 1994;90:2534–2539.
- [88] Ravens U, Cerbai E. Role of potassium currents in cardiac arrhythmias. *Europace*. 2008;10:1133–1137.
- [89] Makielski JC, Farley AL. Na<sup>+</sup> current in human ventricle: implications for sodium loading and homeostasis. *J Cardiovasc Electrophysiol*. 2006;17(Suppl 1):S15–S20.
- [90] Baartscheer A, Hardziyenka M, Schumacher CA, Belterman CN, van Borren MM, Verkerk AO, Coronel R, Fiolet JW. Chronic inhibition of the Na<sup>+</sup>/H<sup>+</sup> exchanger causes regression of hypertrophy, heart failure, and ionic and electrophysiological remodeling. *Br J Pharmacol*. 2008;154:1266–1275.
- [91] Kilic A, Velic A, De Windt LJ, Fabritz L, Voss M, Mitko D, Zwiener M, Baba HA, van Eickels M, Schlatter E, Kuhn M. Enhanced activity of the myocardial Na<sup>+</sup>/H<sup>+</sup> exchanger NHE-1 contributes to cardiac remodeling in atrial natriuretic peptide receptor-deficient mice. *Circulation*. 2005;112:2307–2317.
- [92] Bossuyt J, Ai X, Moorman JR, Pogwizd SM, Bers DM. Expression and phosphorylation of the Na<sup>+</sup>-pump regulatory subunit phospholemman in heart failure. *Circ Res*. 2005;97:558–565.
- [93] Semb SO, Lunde PK, Holt E, Tonnessen T, Christensen G, Sejersted OM. Reduced myocardial Na<sup>+</sup>, K<sup>+</sup>-pump capacity in congestive heart failure following myocardial infarction in rats. *J Mol Cell Cardiol*. 1998;30:1311–1328.
- [94] Verdonck F, Volders PG, Vos MA, Sipido KR. Increased Na<sup>+</sup> concentration and altered Na/K pump activity in hypertrophied canine ventricular cells. *Cardiovasc Res*. 2003;57:1035–1043.
- [95] Bers DM. Digitalis and Na/Ca exchange: old dog learns new mitochondrial tricks. *J Mol Cell Cardiol*. 2010;49:713–714.
- [96] Vassalle M, Lin CI. Calcium overload and cardiac function. *J Biomed Sci*. 2004;11:542–565.
- [97] Sipido KR. Calcium overload, spontaneous calcium release, and ventricular arrhythmias. *Heart Rhythm*. 2006;3:977–979.
- [98] Györke S, Györke I, Lukyanenko V, Terentyev D, Viatchenko-Karpinski S, Wiesner TF. Regulation of sarcoplasmic reticulum calcium release by luminal calcium in cardiac muscle. *Front Biosci*. 2002;7:d1454–d1463.
- [99] Zaza A, Rocchetti M, Brioschi A, Cantadori A, Ferroni A. Dynamic Ca<sup>2+</sup>-induced inward rectification of K<sup>+</sup> current during the ventricular action potential. *Circ Res*. 1998;82:947–956.
- [100] Choi BR, Burton F, Salama G. Cytosolic Ca<sup>2+</sup> triggers early afterdepolarizations and Torsade de Pointes in rabbit hearts with type 2 long QT syndrome. *J Physiol*. 2002;543:615–631.
- [101] Undrovinas AI, Belardinelli L, Undrovinas NA, Sabbah HN. Ranolazine improves abnormal repolarization and contraction in left ventricular myocytes of dogs with heart failure by inhibiting late sodium current. *J Cardiovasc Electrophysiol*. 2006;17(Suppl 1):S169–S177.
- [102] Undrovinas NA, Maltsev VA, Belardinelli L, Sabbah HN, Undrovinas A. Late sodium current contributes to diastolic cell Ca<sup>2+</sup> accumulation in chronic heart failure. *J Physiol Sci*. 2010;60:245–257.
- [103] Bache RJ, Vrobel TR, Arentzen CE, Ring WS. Effect of maximal coronary vasodilation on transmural myocardial perfusion during tachycardia in dogs with left ventricular hypertrophy. *Circ Res*. 1981;49:742–750.
- [104] Maack C, Cortassa S, Aon MA, Ganesan AN, Liu T, O'Rourke B. Elevated cytosolic Na<sup>+</sup> decreases mitochondrial Ca<sup>2+</sup> uptake during excitation-contraction coupling and impairs energetic adaptation in cardiac myocytes. *Circ Res*. 2006;99:172–182.
- [105] Saint DA. The role of the persistent Na<sup>+</sup> current during cardiac ischemia and hypoxia. *J Cardiovasc Electrophysiol*. 2006;17(Suppl 1):S96–S103.
- [106] Wilkins BJ, Molkentin JD. Calcium-calcineurin signaling in the regulation of cardiac hypertrophy. *Biochem Biophys Res Commun*. 2004;322:1178–1191.
- [107] Bers DM, Guo T. Calcium signaling in cardiac ventricular myocytes. *Ann N Y Acad Sci*. 2005;1047:86–98.
- [108] Gersh BJ, Maron BJ, Bonow RO, Dearani JA, Fifer MA, Link MS, Naidu SS, Nishimura RA, Ommen SR, Rakowski H, Seidman CE, Towbin JA, Udelson JE, Yancy CW. ACCF/AHA guideline for the diagnosis and treatment of hypertrophic cardiomyopathy: a report of the American College of Cardiology Foundation/American Heart Association Task Force on Practice Guidelines. *Circulation*. 2011;124:e783–e831.
- [109] Maron BJ, Olivetto I, Spirito P, Casey SA, Bellone P, Gohman TE, Graham KJ, Burton DA, Cecchi F. Epidemiology of hypertrophic cardiomyopathy-related death: revisited in a large non-referral-based patient population. *Circulation*. 2000;102:858–864.
- [110] Maron BJ, McKenna WJ, Danielson GK, Kappenberger LJ, Kuhn HJ, Seidman CE, Shah PM, Spencer WH 3rd, Spirito P, Ten Cate FJ, Wigle ED. American College of Cardiology/European Society of Cardiology clinical expert consensus document on hypertrophic cardiomyopathy. A report of the American College of Cardiology Foundation Task Force

- on Clinical Expert Consensus Documents and the European Society of Cardiology Committee for Practice Guidelines. *J Am Coll Cardiol*. 2003;42:1687–1713.
- [111] Olivetto I, Girolami F, Nistri S, Rossi A, Rega L, Garbini F, Grifoni C, Cecchi F, Yacoub MH. The many faces of hypertrophic cardiomyopathy: from developmental biology to clinical practice. *J Cardiovasc Transl Res*. 2009;2:349–367.
- [112] Johnson JN, Grifoni C, Bos JM, Saber-Ayad M, Ommen SR, Nistri S, Cecchi F, Olivetto I, Ackerman MJ. Prevalence and clinical correlates of QT prolongation in patients with hypertrophic cardiomyopathy. *Eur Heart J*. 2011;32:1114–1120.
- [113] Shimizu W, Antzelevitch C. Sodium channel block with mexiletine is effective in reducing dispersion of repolarization and preventing torsade des pointes in LQT2 and LQT3 models of the long-QT syndrome. *Circulation*. 1997;96:2038–2047.
- [114] Martin RL, McDermott JS, Salmen HJ, Palmatier J, Cox BF, Gintant GA. The utility of hERG and repolarization assays in evaluating delayed cardiac repolarization: influence of multi-channel block. *J Cardiovasc Pharmacol*. 2004;43:369–379.
- [115] Song Y, Shryock JC, Wagner S, Maier LS, Belardinelli L. Blocking late sodium current reduces hydrogen peroxide-induced arrhythmogenic activity and contractile dysfunction. *J Pharmacol Exp Ther*. 2006;318:214–222.
- [116] Song Y, Shryock JC, Wu L, Belardinelli L. Antagonism by ranolazine of the pro-arrhythmic effects of increasing late INa in guinea pig ventricular myocytes. *J Cardiovasc Pharmacol*. 2004;44:192–199.
- [117] Nagatomo T, January CT, Makielski JC. Preferential block of late sodium current in the LQT3 DeltaKPQ mutant by the class I(C) antiarrhythmic flecainide. *Mol Pharmacol*. 2000;57:101–107.
- [118] Stokoe KS, Thomas G, Goddard CA, Colledge WH, Grace AA, Huang CL. Effects of flecainide and quinidine on arrhythmogenic properties of Scn5a + /Delta murine hearts modelling long QT syndrome 3. *J Physiol*. 2007;578:69–84.
- [119] Sicouri S, Antzelevitch D, Heilmann C, Antzelevitch C. Effects of sodium channel block with mexiletine to reverse action potential prolongation in in vitro models of the long term QT syndrome. *J Cardiovasc Electrophysiol*. 1997;8:1280–1290.
- [120] Shimizu W, Antzelevitch C. Cellular basis for long QT, transmural dispersion of repolarization, and torsade de pointes in the long QT syndrome. *J Electrocardiol*. 1999;32:177–184.
- [121] Dumaine R, Kirsch GE. Mechanism of lidocaine block of late current in long Q-T mutant Na<sup>+</sup> channels. *Am J Physiol*. 1998;274:H477–H487.
- [122] Wu L, Guo D, Li H, Hackett J, Yan GX, Jiao Z, Antzelevitch C, Shryock JC, Belardinelli L. Role of late sodium current in modulating the proarrhythmic and antiarrhythmic effects of quinidine. *Heart Rhythm*. 2008;5:1726–1734.
- [123] Restivo M, Yin H, Caref EB, Patel AI, Ndrepepa G, Avitabile MJ, Assadi MA, Isber N, el-Sherif N. Reentrant arrhythmias in the subacute infarction period. The proarrhythmic effect of flecainide acetate on functional reentrant circuits. *Circulation*. 1995;91:1236–1246.
- [124] Clements-Jewery H, Kanaganayagam GS, Kabra R, Curtis MJ. Actions of flecainide on susceptibility to phase-2 ventricular arrhythmias during infarct evolution in rat isolated perfused hearts. *Br J Pharmacol*. 2006;147:468–475.
- [125] Benhorin J, Taub R, Goldmit M, Kerem B, Kass RS, Windman I, Medina A. Effects of flecainide in patients with new SCN5A mutation: mutation-specific therapy for long-QT syndrome? *Circulation*. 2000;101:1698–1706.
- [126] Epstein AE, Hallstrom AP, Rogers WJ, Liebson PR, Seals AA, Anderson JL, Cohen JD, Capone RJ, Wyse DG. Mortality following ventricular arrhythmia suppression by encainide, flecainide, and moricizine after myocardial infarction. The original design concept of the Cardiac Arrhythmia Suppression Trial (CAST). *JAMA*. 1993;270:2451–2455.
- [127] Allesie MA, Bonke FI, Schopman FJ. Circus movement in rabbit atrial muscle as a mechanism of tachycardia. III. The “leading circle” concept: a new model of circus movement in cardiac tissue without the involvement of an anatomical obstacle. *Circ Res*. 1977;41:9–18.
- [128] Maltsev VA, Sabbah HN, Undrovinas AI. Late sodium current is a novel target for amiodarone: studies in failing human myocardium. *J Mol Cell Cardiol*. 2001;33:923–932.
- [129] Shiga T, Kasanuki H. Drug therapy for ventricular tachyarrhythmia in heart failure. *Circ J*. 2007;71:A90–A96.
- [130] Riera AR, Uchida AH, Ferreira C, Ferreira Filho C, Schapachnik E, Dubner S, Zhang L, Moffa PJ. Relationship among amiodarone, new class III antiarrhythmics, miscellaneous agents and acquired long QT syndrome. *Cardiol J*. 2008;15:209–219.
- [131] Schrickel JW, Schwab JO, Yang A, Bielik H, Bitzen A, Luderitz B, Lewalter T. Pro-arrhythmic effects of amiodarone and concomitant rate-control medication. *Europace*. 2006;8:403–407.
- [132] Wu L, Rajamani S, Shryock JC, Li H, Ruskin J, Antzelevitch C, Belardinelli L. Augmentation of late sodium current unmasks the proarrhythmic effects of amiodarone. *Cardiovasc Res*. 2008;77:481–488.
- [133] Fedida D, Orth PM, Hesketh JC, Ezrin AM. The role of late I and antiarrhythmic drugs in EAD formation and termination in Purkinje fibers. *J Cardiovasc Electrophysiol*. 2006;17(Suppl 1):S71–S78.
- [134] Wilson SR, Scirica BM, Braunwald E, Murphy SA, Karwatowska-Prokopczuk E, Buros JL, Chaitman BR, Morrow DA. Efficacy of ranolazine in patients with chronic angina observations from the randomized, double-blind, placebo-controlled MERLIN-TIMI (Metabolic Efficiency With Ranolazine for Less Ischemia in Non-ST-Segment Elevation Acute Coronary Syndromes) 36 Trial. *J Am Coll Cardiol*. 2009;53:1510–1516.
- [135] Stone PH, Chaitman BR, Stocke K, Sano J, DeVault A, Koch GG. The anti-ischemic mechanism of action of ranolazine in stable ischemic heart disease. *J Am Coll Cardiol*. 2010;56:934–942.
- [136] Antzelevitch C, Belardinelli L, Zygmunt AC, Burashnikov A, Di Diego JM, Fish JM, Cordeiro JM, Thomas G. Electrophysiological effects of ranolazine, a novel antianginal agent with antiarrhythmic properties. *Circulation*. 2004;110:904–910.
- [137] Scirica BM, Morrow DA, Hod H, Murphy SA, Belardinelli L, Hedgepeth CM, Molhoek P, Verheugt FW, Gersh BJ, McCabe CH, Braunwald E. Effect of ranolazine, an antianginal agent with novel electrophysiological properties, on the incidence of arrhythmias in patients with non ST-segment elevation acute coronary syndrome: results from the Metabolic Efficiency With Ranolazine for Less Ischemia in Non ST-Elevation Acute Coronary Syndrome Thrombolysis in Myocardial Infarction 36 (MERLIN-TIMI 36) randomized controlled trial. *Circulation*. 2007;116:1647–1652.

- [138] Morrow DA, Scirica BM, Karwowska-Prokopczuk E, Murphy SA, Budaj A, Varshavsky S, Wolff AA, Skene A, McCabe CH, Braunwald E. Effects of ranolazine on recurrent cardiovascular events in patients with non-ST-elevation acute coronary syndromes: the MERLIN-TIMI 36 randomized trial. *JAMA*. 2007;297:1775–1783.
- [139] Sossalla S, Kallmeyer B, Wagner S, Mazur M, Maurer U, Toischer K, Schmitto JD, Seipelt R, Schondube FA, Hasenfuss G, Belardinelli L, Maier LS. Altered Na(+) currents in atrial fibrillation effects of ranolazine on arrhythmias and contractility in human atrial myocardium. *J Am Coll Cardiol*. 2010;55:2330–2342.
- [140] Sicouri S, Glass A, Belardinelli L, Antzelevitch C. Antiarrhythmic effects of ranolazine in canine pulmonary vein sleeve preparations. *Heart Rhythm*. 2008;5:1019–1026.
- [141] Sicouri S, Belardinelli L, Antzelevitch C. Antiarrhythmic effects of the highly selective late sodium channel current blocker GS-458967. *Heart Rhythm*. 2013;10(7):1036–1043.
- [142] Shannon TR, Ginsburg KS, Bers DM. Quantitative assessment of the SR Ca<sup>2+</sup> leak-load relationship. *Circ Res*. 2002;91:594–600.
- [143] Tamarelle S, Le Grand B, John GW, Feuvray D, Coulombe A. Anti-ischemic compound KC 12291 prevents diastolic contracture in isolated atria by blockade of voltage-gated sodium channels. *J Cardiovasc Pharmacol*. 2002;40:346–355.
- [144] Rousseau MF, Pouleur H, Cocco G, Wolff AA. Comparative efficacy of ranolazine versus atenolol for chronic angina pectoris. *Am J Cardiol*. 2005;95:311–316.
- [145] Olivetto I, Cecchi F, Poggesi C, Yacoub MH. Patterns of disease progression in hypertrophic cardiomyopathy: an individualized approach to clinical staging. *Circ Heart Fail*. 2012;5:535–546.
- [146] Rastogi S, Sharov VG, Mishra S, Gupta RC, Blackburn B, Belardinelli L, Stanley WC, Sabbah HN. Ranolazine combined with enalapril or metoprolol prevents progressive LV dysfunction and remodeling in dogs with moderate heart failure. *Am J Physiol Heart Circ Physiol*. 2008;295:H2149–H2155.