



Review

Impact of Influenza Vaccination on All-Cause Mortality and Hospitalization for Pneumonia in Adults and the Elderly with Diabetes: A Meta-Analysis of Observational Studies

Angela Bechini ¹ , Alessandra Ninci ¹ , Marco Del Riccio ^{1,*} , Iaria Biondi ¹, Jacopo Bianchi ¹, Paolo Bonanni ¹ , Edoardo Mannucci ² and Matteo Monami ²

¹ Department of Health Sciences, University of Florence, 50134 Florence, Italy; angela.bechini@unifi.it (A.B.); alessandra.ninci@unifi.it (A.N.); ilaria.biondi@unifi.it (I.B.); jacopo.bianchi@unifi.it (J.B.); paolo.bonanni@unifi.it (P.B.)

² Diabetology, Careggi Hospital and University of Florence, 50134 Florence, Italy; edoardo.mannucci@unifi.it (E.M.); matteo.monami@unifi.it (M.M.)

* Correspondence: marco.delriccio@unifi.it

Received: 28 March 2020; Accepted: 29 May 2020; Published: 30 May 2020



Abstract: Diabetes is a chronic condition that can be worsened by complications such as seasonal influenza virus infections. The aim of the present meta-analysis is the systematic retrieval and analysis of all available evidence on the effects of an influenza vaccine on diabetic patients. We conducted a systematic review and meta-analysis by searching MEDLINE, Embase and the Cochrane databases from inception until April 2019. We included all types of studies reporting on the effectiveness of influenza vaccination in adult and elderly patients with type 1 and type 2 diabetes. The Newcastle-Ottawa scale was used to assess risk of bias, the GRADE methodology was used to assess the evidence for each outcome. A total of 2261 studies were identified, of those, 6 studies completely fulfilled the inclusion criteria. In the 6 studies included in the analysis, influenza vaccination was associated with a lower mortality rate (Mantel Haenszel Odds Ratio (MH-OR), 95% CI: 0.54 (0.40; 0.74), $p < 0.001$). Patients who received influenza vaccination showed a lower risk of hospitalization for pneumonia (MH-OR, 95% CI: 0.89; (0.80; 0.98), $p = 0.18$). A sensitivity analysis using fixed effect model confirmed the results (MH-OR, 95% CI: 0.91; (0.87; 0.96); $p = 0.001$). The results of this meta-analysis are clinically relevant and support the recommendation for all persons with diabetes to receive influenza vaccination.

Keywords: influenza vaccination; diabetes; hospitalization; mortality; meta-analysis

1. Introduction

Seasonal influenza virus infections are often associated with mild and self-limiting symptoms without any need for medical care. However, in some subjects, and particularly in those with advanced age and/or comorbidities, influenza can be aggravated by complications [1]. Several studies have shown that influenza in patients with diabetes is associated with a higher mortality and risk of complications, such as deep venous thrombosis, pulmonary embolism, and pneumonia [2]. Because of this higher risk [3], influenza vaccination is highly recommended in patients with diabetes by the World Health Organization (WHO) [4] and by several guidelines from scientific societies [5–7].

One of the possible mechanisms underlying the greater susceptibility of diabetic patients to influenza and its complications could be the impaired immune response which is related to glucotoxicity [8–10]. Glucose toxicity could theoretically reduce the immune response to vaccines: in fact, some studies have shown a reduction in the innate immune response to vaccination [11,12] in patients with diabetes. Nevertheless, some others reported that the humoral response was not dissimilar from the response of healthy subjects [13,14]. The efficacy of vaccination in preventing influenza infection and its complications in patients with diabetes needs, therefore, to be specifically assessed.

Several observational studies reported that mortality and hospitalization rates are significantly different in vaccinated diabetic patients, when compared to non-vaccinated patients. The aim of the present meta-analysis is the systematic retrieval and analysis of all available evidence on the effects of influenza vaccine on the risk of hospitalization for pneumonia and mortality in patients with diabetes.

2. Materials and Methods

2.1. Protocol and Registration

Methods of the present meta-analysis and inclusion criteria were specified in advance in a protocol, available on the PROSPERO website (CRD42019127620; <https://www.crd.york.ac.uk/PROSPERO/>), according to the criteria of the PRISMA statement [15].

2.2. Eligibility Criteria

To be eligible for this systematic review, a study had to be an original report assessing the effectiveness of influenza vaccination in adult diabetic patients (type 1 and type 2). No studies based on pediatric patients were considered eligible for inclusion. The main endpoints were all-cause mortality and hospitalization for pneumonia. The non-exposed or control group were unvaccinated diabetic patients. Only observational (cohort or nested case-control) studies were included.

2.3. Study Search and Selection

Studies were identified by searching MEDLINE, EMBASE, and Cochrane databases for studies in English, up to April 24th, 2019, on diabetic subjects exposed to influenza vaccination. Detailed information on the search string is reported in the Supplementary Materials (Table S1).

The eligibility assessment was performed in two stages. In the first one, articles were screened by title and abstract in a blinded manner by two couples of authors (I.B. and M.D.R. or A.N. and J.B.). Disagreements were resolved by consensus and, if not reachable, by a third investigator (M.M. or A.B.). In the second stage, the entire text of the selected articles were read by four authors (I.B., M.D.R., A.N. and J.B.).

2.4. Data Retrieval

We developed a data extraction spreadsheet to collect data. A.N. and M.D.R. extracted the data from eligible studies and J.B. and I.B. checked the extracted data. Disagreements were solved by M.M.

The following parameters/information were extracted: (1) Study identification characteristics; title, first author, year of publication; (2) characteristics of participants; (3) type of intervention; (4) type of outcome measure. Risk ratios and odds ratios were extracted directly or calculated from the publications. The quality of trials was assessed using the parameters proposed by the Newcastle-Ottawa Scale (NOS) [16].

2.5. Statistical Analyses

Meta-analysis was performed using the Mantel-Haenszel odds ratio (MH-OR) with 95% confidence interval (95% CI); it was calculated for all outcomes defined above, on an intention-to-treat basis. Heterogeneity was assessed by using I² statistics. A random effects model was applied in the primary analysis, whereas fixed effect models were applied for sensitivity analysis. Begg and Mazumdar's test was performed in order to estimate possible publication/disclosure bias. All analyses specified above were performed using Review Manager 5.3; Copenhagen: The Nordic Cochrane Centre, The Cochrane Collaboration, 2014. The GRADE methodology [17] was used to assess the quality of the body of retrieved evidence, using the GRADEpro GDT software (GRADEpro Guideline Development Tool, McMaster University, 2015. Available from gradepro.org).

2.6. Role of the Funding Source

This research was performed as a part of the institutional activity of the unit, with no specific funding. All expenses, including salaries of the investigators, were covered by public research funds.

3. Results

3.1. Studies Selection

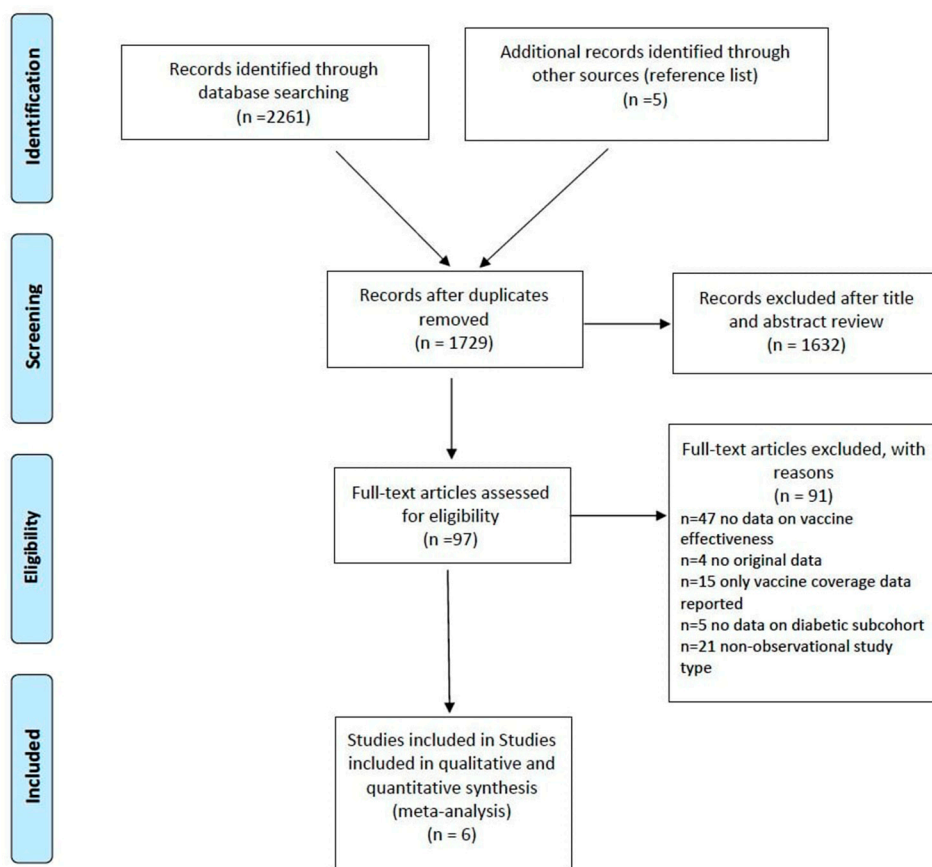
A total of 2261 studies (720 from Medline, 1332 from Embase and 209 from Cochrane) were identified; five additional records were identified by checking a reference list (cross-reference search) [18]. After removing 537 duplicates, 1632 studies were excluded after title and abstract review. The full text of the remaining items was examined in detail. Six studies fulfilled the inclusion criteria (Figure 1). None of the studies include pregnant women.

The main characteristics of those studies are summarized in Table 1. The main reasons for exclusion were: No data on vaccine effectiveness in diabetic patients reported in the study ($n = 47$), no new original data ($n = 4$), studies that only reported vaccine coverage data ($n = 15$), absence of data on diabetic subcohort ($n = 5$), and non-observational study type ($n = 21$).

Table 1. Characteristics of included studies on influenza vaccine effectiveness in diabetic patients.

Author	Study Design and Period	Country	Age in Years (Mean/Range)	Male (%)	Identification of Diabetic Patient and Data Source	Circulating Influenza (Sub)Strains	Study Size (n)
Cohort studies							
Heymann, 2004 [19]	Retrospective, 2000/2001	Israel	Vacc ¹ , 72.8 Non vacc., 73.1	Vacc. 51.8 Non vacc. 42.1	International Classification of Diseases (ICD)-9 codes, diabetes register of healthcare service	Not reported	16,383
Rodriguez-Blanco, 2012 [20]	Retrospective, 2002–2005	Spain	Vacc., 75.2 Non Vacc 73.1	Vacc., 39.8 Non vacc., 42.2	ICD-9 codes, clinical records	A(H3N2)	2650
Shade, 2000 [21]	Retrospective, 1996–1998	US	65 to 114 years	Not reported	ICD-9 codes, hospital discharge	Not reported	26,443 in 96/97 23,839 in 97/98
Vamos, 2016 [22]	Retrospective 2003–2010	England	Vacc., 66.0 Non vacc., 56.2	Vacc., 53.9 Non vacc., 54.2	ICD-10 codes, hospital admissions	A(H1N1) pdm09	124,503
Case-control studies							
Looijmans, 2006 [23]	Nested, 1999/2000	Netherlands	Cases, 68.1 Controls 69.8	Cases 51.6 Controls 38.3	International Classification of Primary Care (ICPC) codes, GPs	A(H3N2)	1753 (192 cases, 1561 controls)
Wang, 2013 [24]	Nested, 2001–2009	Taiwan	Vacc., 73.1 Non vacc. 73.2	Vacc., 50.0 Non vacc., 49.5	ICD-9 codes, NHRI-database	Not reported	9025, (4571 vacc., 4454 non vacc.)

¹ Vacc: vaccinated.



From: Moher D, Liberati A, Tetzlaff J, Altman DG, The PRISMA Group (2009). Preferred Reporting Items for Systematic Reviews and Meta-Analyses: The PRISMA Statement. *PLoS Med* 6(7): e1000097. doi:10.1371/journal.pmed1000097

For more information, visit www.prisma-statement.org.

Figure 1. Flow diagram for the systematic review (PRISMA statement [15]).

The quality of the included studies was high, except for studies [21] and [19] (Tables 2 and 3).

3.2. All Cause-Mortality

In the 6 studies included in the analysis, influenza vaccination was associated with a lower mortality rate (MH-OR, 95% CI: 0.54 (0.40; 0.74), $p < 0.001$) and this result was confirmed in a sensitivity analysis using a fixed effect model (MH-OR, 95% CI: 0.67 (0.64; 0.70); $p < 0.001$) (Table 4). No publication bias was detected using Begg and Mazumdar's test (Kendall's tau without continuity correction: 0.05, $p = 0.88$). I² statistics suggested a relevant heterogeneity (I²: 96, $p < 0.001$).

Table 2. Quality of the cohort studies included in the meta-analysis (NOS Scale).

Cohort Study										
Author, Year	Selection			Comparability			Outcome			Total Quality Score
	Representativeness of the Exposed Cohort	Selection of the Non-Exposed Cohort	Ascertainment of Exposure	Demonstration that Outcome of Interest Was not Present at Start of Study	Main Factor	Additional Factor	Assessment of Outcome with Independency	Adequacy of Follow up Length (to Asses Outcome)	Loss to Follow up Acceptable (Less than 10% and Reported)	
Heymann, 2004 [19]	*	*	*	*	*		*			6/9
Rodriguez-Blanco, 2012 [20]	*	*	*	*	*	*	*	*	*	9/9
Shade, 2000 [21]	*	*			*		*			4/9
Vamos, 2016 [22]	*	*	*	*	*	*	*	*	*	9/9

Table 3. Quality of the case-control studies included in the meta-analysis (NOS Scale).

Case-Control Study										
Author, Year	Selection			Comparability			Exposure			Total Quality Score
	The Case Definition Adequate	Representative Series of Cases	Selection of Controls	Definition of Controls	Main Factor	Additional Factor	Ascertainment of Exposure Using Secure Records	Ascertainment of Exposure Using the Same Method for Cases and Controls	Ascertainment of Exposure with Non-Response Rate for Both Groups	
Looijmans, 2006 [23]	*	*	*	*	*	*	*	*	*	9/9
Wang, 2013 [24]	*	*	*	*	*	*	*	*	*	9/9

Table 4. Forest plot of the meta-analysis of all cause-mortality rate.

Study Name	Statistics for Each Study					Rate Ratio and 95% IC
	Rate Ratio	Lower Limit	Upper Limit	Z-Value	p-Value	
Heymann, 2004 [19]	0.33	0.25	0.43	-8.41	0.00	
Looijmans, 2006 [23]	0.56	0.32	0.97	-2.06	0.04	
Rodriguez-Blanco, 2012 [20]	0.78	0.53	1.15	-1.24	0.21	
Shade, 2000 [21]	0.54	0.50	0.58	-16.08	0.00	
Vamos, 2016 [22]	0.85	0.80	0.90	-5.13	0.00	
Wang, 2013 [24]	0.39	0.32	0.48	-9.10	0.00	
Overall	0.54	0.40	0.74	-3.84	0.00	

3.3. Hospitalization for Pneumonia

Four studies reported information on hospitalization for pneumonia. Patients who received influenza vaccination showed a lower risk of hospitalization for pneumonia (MH-OR, 95% CI: 0.89; (0.80; 0.98), $p = 0.18$). A sensitivity analysis using fixed effect model confirmed the results (MH-OR, 95% CI: 0.91, (0.87; 0.96); $p = 0.001$) (Table 5). No publication bias was detected using Begg and Mazumdar’s test (Kendall’s tau without continuity correction: -0.33 , $p = 0.50$). I2 statistics suggested a relevant heterogeneity (I2: 62.9%, $p = 0.044$).

Table 5. Forest Plot of metanalysis of hospitalization for pneumonia rate.

Study Name	Statistics for Each Study					Rate Ratio and 95% IC
	Rate Ratio	Lower Limit	Upper Limit	Z-Value	p-Value	
Heymann, 2004 [19]	0.83	0.75	0.92	-3.34	0.01	
Looijmans, 2006 [23]	0.70	0.47	1.03	-0.80	0.072	
Vamos, 2016 [22]	0.97	0.91	1.04	-0.77	0.00	
Wang, 2013 [24]	0.88	0.78	0.99	-2.20	0.00	
Overall	0.89	0.80	0.98	-2.36	0.00	

3.4. Quality of Evidence

Using the GRADE algorithm, the overall quality of evidence was rated “moderate” for both endpoints (Table 6).

Table 6. GRADE evidence for influenza vaccination on all-cause mortality and hospitalization for pneumonia. Influenza vaccine compared to no vaccine for diabetes.

N of Studies	Study Design	Certainty Assessment				Other Considerations	N° of Patients		Effect		Certainty	Importance
		Risk of Bias	Inconsistency	Indirectness	Imprecision		Influenza Vaccine	No Vaccine	Relative (95% CI)	Absolute (95% CI)		
All-cause mortality												
6	Observational studies	Serious ^a	Very serious ^b	Not serious	Not serious	Strong association all plausible residual confounding would reduce the demonstrated effect	3545/108241 (3.3%)	5195/88837 (5.8%)	OR 0.54 (0.40 to 0.74)	26 fewer per 1.000 (from 34 fewer to 15 fewer)	⊕⊕⊕○ MODERATE	CRITICAL
Hospitalization for pneumonia												
4	Observational studies	Serious ^a	Very serious ^b	Not serious	Not serious	Strong association all plausible residual confounding would reduce the demonstrated effect	3203/83990 (3.8%)	2702/57038 (4.7%)	OR 0.89 (0.80 to 0.98)	5 fewer per 1.000 (from 9 fewer to 1 fewer)	⊕⊕⊕○ MODERATE	IMPORTANT

^a Possible confounding bias; ^b elevated heterogeneity across studies, as demonstrated by I² statistics. Differences in case mix, populations and types of vaccines.

4. Discussion

The results of the present meta-analysis are consistent with those of a previous systematic review [25], which considered some articles included in the present work (Heymann [19], Rodriguez-Blanco [20], Schade [21], Looijmans-Vanden Akker [23], Wang [24]). We excluded some studies included in the previous meta-analysis because they did not report separate data on hospitalization for pneumonia and mortality (Gasparini [26], Selvais [27], Hak [28], Colqhoun [29], Lau [30], Isotani [31]). In comparison with that meta-analysis, the present work also includes one large retrospective cohort study [22], which was not yet available at the time of the previous review [25].

The strengths of this study—as reported by Vamos et al.—include the use of a large population-based cohort of patients with type 2 diabetes, long follow-up time, the availability of key laboratory and clinical parameters, and knowing the exact dates of vaccination [22].

The wide reduction of all-cause mortality associated with influenza vaccination in diabetic patients, shown in the results of this meta-analysis, is consistent with the reduction reported in elderly people [32]. Such a relevant effect can be partly explained by the reduction of complications of influenza, such as pneumonia. As a matter of fact, in the present meta-analysis influenza vaccination was associated with a reduced hospitalization rate for pneumonia. However, other mechanisms could also be involved. Epidemiological evidence suggests that in patients with cardiovascular disease, influenza vaccination may reduce cardiovascular mortality and combined cardiovascular events [33]. Infections such as influenza can produce a transient but relevant increase in blood glucose levels; this could worsen diabetes and its intercurrent complications [34].

It is important to mention that the included studies assess the effectiveness of influenza vaccination in countries where vaccination coverages are diverse. In European countries vaccination is generally recommended in the elderly, adults with chronic conditions or healthcare workers to reduce transmission [35], but influenza vaccination coverage rates are generally still not adequate [36]. In England, where influenza vaccine is offered to all people with chronic conditions, Vamos et al. found that vaccination coverage ranged from 63.1% in 2008/09 to 69.0% in 2006/07 [22]. In the study by Rodriguez-Blanco et al., annual influenza vaccine coverages ranged from 59.8% to 71.3% [20], and these findings are consistent with other data reported in older people with diabetes in Spain and other developed countries, where approximately 60–70% of these subjects are immunized annually against influenza [37,38]. The Netherlands represent an exception, since it reached the highest reported vaccination coverage rates among older age groups (82% in 2008/09) compared to other EU countries [39]. In the USA, estimated influenza vaccination levels for persons aged >65 years in 1997, 1999, and 2001 were 63.2%, 65.7%, and 63.0%, respectively, and the estimated influenza coverage among diabetic patients in the study population was 36% in 1996 and 37.2% in 1997 [40]. In Israel, influenza vaccination rates increased in the elderly (aged 65 years and over) in the 2000/2001 (54.4%) and 2001/2002 (60.8%) winter seasons, compared to the previous two seasons (51.6% in 1998/1999 and 49.1% in 1999/2000) [41]. In Taiwan, where influenza vaccination is offered free of charge to high-risk and elderly individuals since 1998, the influenza vaccination rates for elderly subjects were still lower than 50% in 2007 [42].

Several limitations of the present meta-analysis should be recognized. Collected data are derived from observational retrospective studies, which, although well designed and properly executed, cannot completely avoid the risk of confounding. Patients with diabetes who choose to get vaccinated against influenza could differ in some respects from those who, despite current recommendations, decide to avoid the vaccine. Some of these confounders (e.g., health beliefs, self-care, adherence to physicians' prescriptions, etc.) cannot be properly measured and adjusted for in retrospective studies. This could lead to an overestimation of the effectiveness of the vaccination.

The retrospective nature of the studies included in the meta-analysis limits the reliability of the outcome diagnosis. Although “all-cause mortality” poses no such problem, “hospitalization for pneumonia” is based on a diagnosis performed without following any pre-determined criteria. For the same reason, influenza-related mortality was not considered as an outcome, because of the elevated risk of misclassifications and misdiagnosis.

Another relevant limitation is represented by the heterogeneity of the results, which is confirmed by I² statistics. Unfortunately, the number of available studies is not sufficient to explore (either through analyses of subgroups of studies, or through meta-regressions) the factors underlying this heterogeneity. Pneumococcal vaccination besides influenza vaccination are recommended to diabetic patients, therefore, we might expect that variations in pneumococcal vaccination status could influence our outcomes [43]. Further hypothetical reasons for discrepancies across studies can include differences in population characteristics, differences in case mix, heterogeneity of vaccine formulations and diversities in the biological behaviour of strains of influenza virus in different years.

5. Conclusions

Despite all these limitations, the results of this meta-analysis are clinically relevant and support the recommendation of influenza vaccination in diabetic patients as a key mean to reduce all-cause mortality and hospitalization due to the infection [7,44–46].

The present meta-analysis shows that influenza vaccination is associated with a relevant reduction of complications of the infection, despite some evidence indicating that the immune response to vaccination is reduced in persons with diabetes [11,12]. Nonetheless, other studies have shown that the humoral immune response after influenza vaccination in diabetic patients is not dissimilar from that of the general population [13,14]. Increased HbA1c may be associated with decreased NKG2D receptor, which could be the cause of increased susceptibility of influenza infection in diabetic patients [47]. Influenza vaccination is therefore needed to reduce influenza infection in diabetics.

Nowadays, many types of vaccines against influenza are available on the market. While any influenza vaccine can be crucial to avoid complications in risk groups, the use of the most appropriate vaccine could optimize the result in preventing hospitalizations and death [36]. Influenza vaccination coverage has doubled in 56 countries (influenza vaccine distribution is expressed as the number of doses distributed/1000 total population each year) [48]. This worldwide increase in influenza vaccination uptake reflects greater understanding of the burden of influenza disease and the effectiveness of influenza vaccination, particularly in high-risk patients.

The global use of influenza vaccine will almost certainly continue to increase, even in non-vaccine-producing countries, and this changing pattern in the distribution of influenza vaccine will have important implications for the next pandemic.

Supplementary Materials: The following are available online at <http://www.mdpi.com/2076-393X/8/2/263/s1>, Table S1: Search strategies.

Author Contributions: Conceptualization, A.B., P.B., A.N., M.D.R., I.B., J.B., E.M. and M.M.; methodology, E.M., M.M., A.N., M.D.R., P.B.; software, M.M., A.N. and M.D.R.; validation, M.M., E.M., P.B. and A.B.; formal analysis, M.M., A.N., M.D.R. and E.M.; investigation, A.B., P.B., A.N., M.D.R., I.B., J.B., E.M. and M.M.; data curation, A.B., P.B., A.N., M.D.R., I.B., J.B., E.M. and M.M.; writing—original draft preparation, M.D.R., A.N. and M.M.; writing—review and editing, M.D.R., A.N., M.M., P.B., A.B., E.M. and M.M.; visualization, M.D.R. and A.N.; supervision, E.M., A.B., M.M. and P.B.; project administration, E.M. and P.B. All authors have read and agreed to the published version of the manuscript.

Funding: This research received no external funding.

Conflicts of Interest: Bechini and Bonanni have received speaking fees and grants from GSK, Seqirus, Pfizer; MSD, and Sanofi. The funders had no role in the design of the study; in the collection, analyses, or interpretation of data; in the writing of the manuscript, or in the decision to publish the results.

References

1. Nicholson, K.G.; Wood, J.M.; Zambon, M. Influenza. *Lancet* **2003**, *362*, 1733–1745. [CrossRef]
2. Smeeth, L.; Cook, C.; Thomas, S.; Hall, A.J.; Hubbard, R.; Vallance, P. Risk of deep vein thrombosis and pulmonary embolism after acute infection in a community setting. *Lancet* **2006**, *367*, 1075–1079. [CrossRef]
3. Mertz, D.; Kim, T.H.; Johnstone, J.; Lam, P.P.; Kuster, S.P.; Fadel, S.A.; Tran, D.; Fernandez, E.; Bhatnagar, N.; Loeb, M. Populations at risk for severe or complicated influenza illness: Systematic review and meta-analysis. *BMJ* **2013**, *347*, f5061. [CrossRef] [PubMed]
4. A Background Paper on Influenza Vaccines and Immunization. SAGE Working Group. Available online: https://www.who.int/immunization/sage/meetings/2012/april/1_Background_Paper_Mar26_v13_cleaned.pdf (accessed on 25 January 2020).
5. American Diabetes Association. 4. Comprehensive Medical Evaluation and Assessment of Comorbidities: Standards of Medical Care in Diabetes-2019. *Diabetes Care* **2019**, *42* (Suppl. S1), S34–S45. [CrossRef] [PubMed]
6. Handelsman, Y.; Bloomgarden, Z.T.; Grunberger, G.; Umpierrez, G.; Zimmerman, R.S.; Bailey, T.S.; Blonde, L.; Bray, G.A.; Cohen, A.J.; Dagogo-Jack, S.; et al. American association of clinical endocrinologists and american college of endocrinology—Clinical practice guidelines for developing a diabetes mellitus comprehensive care plan—2015. *Endocr. Pract.* **2015**, *21* (Suppl. S1), 1–87. [CrossRef]
7. Italian Standards for Diabetes Mellitus. Available online: <https://aemmedi.it/wp-content/uploads/2009/06/AMD-Standard-unico1.pdf> (accessed on 8 January 2020).
8. Muller, L.M.; Gorter, K.J.; Hak, E.; Goudzwaard, W.L.; Schellevis, F.G.; Hoepelman, A.I.; Rutten, G.E. Increased risk of common infections in patients with type 1 and type 2 diabetes mellitus. *Clin. Infect. Dis.* **2005**, *41*, 281–288. [CrossRef]
9. Calvet, H.M.; Yoshikawa, T.T. Infections in diabetes. *Infect. Dis. Clin. North. Am.* **2001**, *15*, 407–421. [CrossRef]
10. Emerging Risk Factors Collaboration. Diabetes mellitus, fasting glucose, and risk of cause-specific death. *N. Engl. J. Med.* **2011**, *364*, 829–841. [CrossRef]
11. Diepersloot, R.J.; Bouter, K.P.; Beyer, W.E.; Hoekstra, J.B.; Masurel, N. Humoral immune response and delayed type hypersensitivity to influenza vaccine in patients with diabetes mellitus. *Diabetologia* **1987**, *30*, 397–401. [CrossRef]
12. Muszkat, M.; Friedman, G.; Dannenberg, H.D.; Greenbaum, E.; Lipo, M.; Heymann, Y.; Zakay-Rones, Z.; Ben-Yehuda, A. Response to influenza vaccination in community and in nursing home residing elderly: Relation to clinical factors. *Exp. Gerontol.* **2003**, *38*, 1199–1203. [CrossRef]
13. Pozzilli, P.; Gale, E.A.; Visalli, N.; Baroni, M.; Crovari, P.; Frighi, V.; Cavallo, M.G.; Andreani, D. The immune response to influenza vaccination in diabetic patients. *Diabetologia* **1986**, *29*, 850–854. [CrossRef] [PubMed]
14. El-Madhun, A.S.; Cox, R.J.; Seime, A.; Søvik, O.; Haaheim, L.R. Systemic and local immune responses after parenteral influenza vaccination in juvenile diabetic patients and healthy controls: Results from a pilot study. *Vaccine* **1998**, *16*, 156–160. [CrossRef]
15. Moher, D.; Liberati, A.; Tetzlaff, J.; Altman, D.G.; PRISMA Group. Preferred reporting items for systematic reviews and meta-analyses: The PRISMA statement. *PLoS Med.* **2009**, *6*, e1000097. [CrossRef] [PubMed]
16. Wells, G.; Shea, B.; O’Connell, D.; Peterson, J.; Welch, V.; Losos, M.; Tugwell, P. The Newcastle Ottawa Scale (NOS) for Assessing the Quality of Nonrandomized Studies in Meta-Analyses. 2013. Available online: http://www.ohri.ca/programs/clinical_epidemiology/oxford.asp (accessed on 20 February 2020).
17. Guyatt, G.H.; Oxman, A.D.; Vist, G.E.; Kunz, R.; Falck-Ytter, Y.; Alonso-Coello, P.; Schünemann, H.J.; GRADE Working Group. GRADE: An emerging consensus on rating quality of evidence and strength of recommendations. *BMJ* **2008**, *336*, 924–926. [CrossRef]
18. Horsley, T.; Dingwall, O.; Sampson, M. Checking reference lists to find additional studies for systematic reviews. *Cochrane Database Syst. Rev.* **2011**, MR000026. [CrossRef]
19. Heymann, A.D.; Shapiro, Y.; Chodick, G.; Shalev, V.; Kokia, E.; Kramer, E.; Shemer, J. Reduced hospitalizations and death associated with influenza vaccination among patients with and without diabetes. *Diabetes Care* **2004**, *27*, 2581–2584. [CrossRef]

20. Rodríguez-Blanco, T.; Vila-Corcoles, A.; de Diego, C.; Ochoa-Gondar, O.; Valdivieso, E.; Bobe, F.; Morro, A.; Herrández, N.; Martín, A.; Calamote, F.; et al. Relationship between annual influenza vaccination and winter mortality in diabetic people over 65 years. *Hum. Vaccines Immunother.* **2012**, *8*, 363–370. [[CrossRef](#)]
21. Schade, C.P.; McCombs, M.A. Influenza immunization and mortality among diabetic Medicare beneficiaries in West Virginia. *W. V. Med. J.* **2000**, *96*, 444–448.
22. Vamos, E.P.; Pape, U.J.; Curcin, V.; Harris, M.J.; Valabhji, J.; Majeed, A.; Millett, C. Effectiveness of the influenza vaccine in preventing admission to hospital and death in people with type 2 diabetes. *CMAJ* **2016**, *188*, E342–E351. [[CrossRef](#)]
23. Looijmans-Van den Akker, I.; Verheij, T.J.; Buskens, E.; Nichol, K.L.; Rutten, G.E.; Hak, E. Clinical effectiveness of first and repeat influenza vaccination in adult and elderly diabetic patients. *Diabetes Care* **2006**, *29*, 1771–1776. [[CrossRef](#)]
24. Wang, I.K.; Lin, C.L.; Chang, Y.C.; Lin, P.C.; Liang, C.C.; Liu, Y.L.; Chang, C.T.; Yen, T.H.; Huang, C.C.; Sung, F.C. Effectiveness of influenza vaccination in elderly diabetic patients: A retrospective cohort study. *Vaccine* **2013**, *31*, 718–724. [[CrossRef](#)] [[PubMed](#)]
25. Remschmidt, C.; Wichmann, O.; Harder, T. Vaccines for the prevention of seasonal influenza in patients with diabetes: Systematic review and meta-analysis. *BMC Med.* **2015**, *13*, 53. [[CrossRef](#)] [[PubMed](#)]
26. Gasparini, R.; Amicizia, D.; Lai, P.L.; Rossi, S.; Panatto, D. Effectiveness of adjuvanted seasonal influenza vaccines (Inflexal V® and Fluad®) in preventing hospitalization for influenza and pneumonia in the elderly: A matched case-control study. *Hum. Vaccines Immunother.* **2013**, *9*, 144–152. [[CrossRef](#)] [[PubMed](#)]
27. Selvais, P.L.; Hermans, M.P.; Donckier, J.E.; Buysschaert, M. Reported rates, incentives, and effectiveness of major vaccinations in 501 attendees at two diabetes clinics. *Diabetes Care* **1997**, *20*, 1212–1213. [[CrossRef](#)] [[PubMed](#)]
28. Hak, E.; Nordin, J.; Wei, F.; Mullooly, J.; Poblete, S.; Strikas, R.; Nichol, K.L. Influence of high-risk medical conditions on the effectiveness of influenza vaccination among elderly members of 3 large managed-care organizations. *Clin. Infect. Dis.* **2002**, *35*, 370–377. [[CrossRef](#)] [[PubMed](#)]
29. Colquhoun, A.J.; Nicholson, K.G.; Botha, J.L.; Raymond, N.T. Effectiveness of influenza vaccine in reducing hospital admissions in people with diabetes. *Epidemiol. Infect.* **1997**, *119*, 335–341. [[CrossRef](#)]
30. Lau, D.; Eurich, D.T.; Majumdar, S.R.; Katz, A.; Johnson, J.A. Effectiveness of influenza vaccination in working-age adults with diabetes: A population-based cohort study. *Thorax* **2013**, *68*, 658–663. [[CrossRef](#)]
31. Isotani, H. Use of influenza vaccine in patients with diabetes, particularly those with complications of cardiac or renal disease. *Intern. Med.* **2000**, *39*, 862. [[CrossRef](#)]
32. Jefferson, T.; Rivetti, D.; Rivetti, A.; Rudin, M.; Di Pietrantonj, C.; Demicheli, V. Efficacy and effectiveness of influenza vaccines in elderly people: A systematic review. *Lancet* **2005**, *366*, 1165–1174. [[CrossRef](#)]
33. Clar, C.; Oseni, Z.; Flowers, N.; Keshtkar-Jahromi, M.; Rees, K. Influenza vaccines for preventing cardiovascular disease. *Cochrane Database Syst. Rev.* **2015**, *5*, CD005050. [[CrossRef](#)]
34. Hulme, K.D.; Gallo, L.A.; Short, K.R. Influenza Virus and Glycemic Variability in Diabetes: A Killer Combination? *Front. Microbiol.* **2017**, *8*, 861. [[CrossRef](#)] [[PubMed](#)]
35. Bechini, A.; Lorini, C.; Zanobini, P.; Mandò Tacconi, F.; Boccalini, S.; Grazzini, M.; Bonanni, P.; Bonaccorsi, G. Utility of Healthcare System-Based Interventions in Improving the Uptake of Influenza Vaccination in Healthcare Workers at Long-Term Care Facilities: A Systematic Review. *Vaccines* **2020**, *8*, 165. [[CrossRef](#)] [[PubMed](#)]
36. Bonanni, P.; Boccalini, S.; Zanobini, P.; Dakka, N.; Lorini, C.; Santomauro, F.; Bechini, A. The appropriateness of the use of influenza vaccines: Recommendations from the latest seasons in Italy. *Hum. Vaccines Immunother.* **2018**, *14*, 699–705. [[CrossRef](#)] [[PubMed](#)]
37. Sarría-Santamera, A.; Timoner, J. Influenza vaccination in old adults in Spain. *Eur. J. Public Health* **2003**, *13*, 133–137. [[CrossRef](#)]
38. Jiménez-García, R.; Mayo-Montero, E.; Hernández-Barrera, V.; Garrido, P.C.; Martínez-Hernández, D.; de Miguel, A.G. Influenza vaccination among diabetic adults: Related factors and trend from 1993 to 2001 in Spain. *Diabetes Care* **2005**, *28*, 2031–2033. [[CrossRef](#)]

39. Mereckiene, J.; Cotter, S.; Nicoll, A.; Lopalco, P.; Noori, T.; VENICE project gatekeepers group. Seasonal influenza immunisation in Europe. Overview of recommendations and vaccination coverage for three seasons: Pre-pandemic (2008/09), pandemic (2009/10) and post-pandemic (2010/11). *Eurosurveillance* **2014**, *19*, 20780. [[CrossRef](#)]
40. Centers for Disease Control and Prevention (CDC). Influenza and pneumococcal vaccination levels among adults aged > or = 65 years—United States, 1997. *MMWR Morb. Mortal. Wkly. Rep.* **1998**, *47*, 797–802.
41. Kaufman, Z.; Green, M.S. Compliance with influenza and pneumococcal vaccinations in Israel, 1999–2002. *Public Health Rev.* **2003**, *31*, 71–79.
42. Li, Y.C. Absence of influenza vaccination among high-risk older adults in Taiwan. *BMC Public Health* **2010**, *10*, 603. [[CrossRef](#)]
43. Casanova, L.; Cortaredona, S.; Gaudart, J.; Launay, O.; Vanhems, P.; Villani, P.; Verger, P. Effectiveness of seasonal influenza vaccination in patients with diabetes: Protocol for a nested case-control study. *BMJ Open* **2017**, *7*, e016023. [[CrossRef](#)]
44. Mann, J.I.; De Leeuw, I.; Hermansen, K.; Karamanos, B.; Karlström, B.; Katsilambros, N.; Diabetes and Nutrition Study Group (DNSG) of the European Association. Evidence-based nutritional approaches to the treatment and prevention of diabetes mellitus. *Nutr. Metab. Cardiovasc. Dis.* **2004**, *14*, 373–394. [[CrossRef](#)]
45. Inzucchi, S.E.; Bergenstal, R.M.; Buse, J.B.; Diamant, M.; Ferrannini, E.; Nauck, M.; American Diabetes Association (ADA); European Association for the Study of Diabetes (EASD). Management of hyperglycemia in type 2 diabetes: A patient-centered approach: Position statement of the American Diabetes Association (ADA) and the European Association for the Study of Diabetes (EASD). *Diabetes Care* **2012**, *35*, 1364–1379. [[CrossRef](#)] [[PubMed](#)]
46. Rydén, L.; Grant, P.J.; Anker, S.D.; Berne, C.; Cosentino, F.; Danchin, N. ESC Guidelines on diabetes, pre-diabetes, and cardiovascular diseases developed in collaboration with the EASD: The Task Force on diabetes, pre-diabetes, and cardiovascular diseases of the European Society of Cardiology (ESC) and developed in collaboration with the European Association for the Study of Diabetes (EASD). *Eur. Heart J.* **2013**, *34*, 3035–3087. [[CrossRef](#)] [[PubMed](#)]
47. Guerra, N.; Pestal, K.; Juarez, T.; Beck, J.; Tkach, K.; Wang, L.; Raulet, D.H. A selective role of NKG2D in inflammatory and autoimmune diseases. *Clin. Immunol.* **2013**, *149*, 432–439. [[CrossRef](#)]
48. Macroepidemiology of Influenza Vaccination (MIV) Study Group. The macro-epidemiology of influenza vaccination in 56 countries, 1997–2003. *Vaccine* **2005**, *23*, 5133–5143. [[CrossRef](#)]



© 2020 by the authors. Licensee MDPI, Basel, Switzerland. This article is an open access article distributed under the terms and conditions of the Creative Commons Attribution (CC BY) license (<http://creativecommons.org/licenses/by/4.0/>).