



OPEN ACCESS

CLINICAL SCIENCE

Progressive interstitial lung disease in patients with systemic sclerosis-associated interstitial lung disease in the EUSTAR database

Anna-Maria Hoffmann-Vold ,¹ Yannick Allanore ,² Margarida Alves,³ Cathrine Brunborg,⁴ Paolo Airó,⁵ Lidia P Ananieva,⁶ László Czirják,⁷ Serena Guiducci,⁸ Eric Hachulla ,⁹ Mengtao Li ,¹⁰ Carina Mihai,¹¹ Gabriela Riemekasten,¹² Petros P Sfikakis ,¹³ Otylia Kowal-Bielecka,¹⁴ Antonella Riccardi,¹⁵ Oliver Distler ,¹¹ on behalf of EUSTAR collaborators

Handling editor Josef S Smolen

► Additional material is published online only. To view please visit the journal online (<http://dx.doi.org/10.1136/annrheumdis-2020-217455>).

For numbered affiliations see end of article.

Correspondence to

Prof Oliver Distler, Department of Rheumatology, University Hospital Zurich, Zurich 8091, Switzerland; oliver.distler@usz.ch

Received 30 March 2020
Revised 24 July 2020
Accepted 18 August 2020
Published Online First
28 September 2020

ABSTRACT

Objectives To identify overall disease course, progression patterns and risk factors predictive for progressive interstitial lung disease (ILD) in patients with systemic sclerosis-associated ILD (SSc-ILD), using data from the European Scleroderma Trials And Research (EUSTAR) database over long-term follow-up.

Methods Eligible patients with SSc-ILD were registered in the EUSTAR database and had measurements of forced vital capacity (FVC) at baseline and after 12±3 months. Long-term progressive ILD and progression patterns were assessed in patients with multiple FVC measurements. Potential predictors of ILD progression were analysed using multivariable mixed-effect models.

Results 826 patients with SSc-ILD were included. Over 12±3 months, 219 (27%) showed progressive ILD: either moderate (FVC decline 5% to 10%) or significant (FVC decline >10%). A total of 535 (65%) patients had multiple FVC measurements available over mean 5-year follow-up. In each 12-month period, 23% to 27% of SSc-ILD patients showed progressive ILD, but only a minority of patients showed progression in consecutive periods. Most patients with progressive ILD (58%) had a pattern of slow lung function decline, with more periods of stability/improvement than decline, whereas only 8% showed rapid, continuously declining FVC; 178 (33%) experienced no episode of FVC decline. The strongest predictive factors for FVC decline over 5 years were male sex, higher modified Rodnan skin score and reflux/dysphagia symptoms.

Conclusion SSc-ILD shows a heterogeneous and variable disease course, and thus monitoring all patients closely is important. Novel treatment concepts, with treatment initiation before FVC decline occurs, should aim for prevention of progression to avoid irreversible organ damage.

INTRODUCTION

Systemic sclerosis (SSc) is a rare autoimmune disease, frequently complicated by interstitial lung disease (ILD), which is associated with worse outcomes.^{1–5} Some patients with SSc-associated ILD (SSc-ILD) develop progressive ILD, showing decline in lung function and/or increasing extent of fibrosis by high-resolution CT (HRCT).^{4–10} The

Key messages**What is already known about this subject?**

► A subset of patients with systemic sclerosis-associated interstitial lung disease (SSc-ILD) develop progressive ILD, which is associated with higher mortality, but the prevalence of progressive ILD and the overall disease course and patterns of SSc-ILD are unknown. Current clinical practice emphasises treatment initiation of SSc-ILD patients with progressive ILD.

What does this study add?

- Around 30% of SSc-ILD patients experienced ILD progression during any 12-month period, and 67% of all SSc-ILD patients experienced progression at any time over the mean 5-year follow-up.
- ILD patterns in patients with SSc-ILD are very heterogeneous, with most patients showing both progressive and stable periods.
- Of all progressive SSc-ILD patients, only a minority showed a pattern of rapid, continuously declining forced vital capacity (FVC) with several consecutive episodes of FVC decline and no periods of FVC stability or improvement.

How might this impact on clinical practice or future developments?

► These results highlight a pitfall in current clinical practice, where treatment is often initiated after FVC decline has happened, and thus when lung damage has already occurred. Novel treatment concepts are needed and should aim for prevention of progression to avoid irreversible organ damage. This study defines factors that can identify patients at risk for progression. The results also stress the heterogeneity and variability of the course of ILD in SSc, and highlight the need for close monitoring of all patients with SSc-ILD.

proportion of patients with SSc-ILD who develop progressive ILD and the pattern of disease course in these patients are incompletely understood. Prior



© Author(s) (or their employer(s)) 2021. Re-use permitted under CC BY. Published by BMJ.

To cite: Hoffmann-Vold A-M, Allanore Y, Alves M, et al. *Ann Rheum Dis* 2021;**80**:219–227.

Table 1 Overall baseline demographic and clinical characteristics of all patients with SSc-ILD and characteristics stratified by ILD progression over the 12±3-month observation period

	Total (N=826)	Significant progression (n=100)	Moderate progression (n=123)	Stable (n=396)	Improvement (n=207)
Progression criteria: ΔFVC% predicted		<-10	-10 to -5	>-5 to <5	≥5
Age, years (SD)*	56 (13.1)	59 (13.1)	56 (12.4)	55 (13.5)	58 (12.4)
Male, n (%)*	150 (18)	17 (17)	16 (13)	81 (20)	36 (17)
Disease characteristics at baseline					
Disease duration, years* (SD)	9.7 (8.3)	8.8 (7.7)	10.2 (8.2)	10.2 (8.5)	8.9 (8.3)
Disease duration <3 years*, n (%)	175 (21)	26 (26)	27 (22)	68 (17)	54 (26)
Diffuse cutaneous SSc, n (%)	365/732 (50)	44/96 (46)	55/106 (52)	182/357 (51)	84/173 (49)
Limited cutaneous SSc, n (%)	367/732 (50)	52/96 (54)	51/106 (48)	175/357 (49)	89/173 (51)
Anti-topoisomerase I Ab, n (%)	421/789 (53)	41/97 (42)	64/117 (55)	218/378 (58)	98/197 (50)
Anti-centromere Ab, n (%)	141/783 (18)	19/97 (20)	18/113 (16)	59/376 (16)	45/197 (23)
Anti-RNA polymerase III Ab, n (%)	23/451 (5)	3/54 (6)	3/60 (5)	10/217 (5)	7/117 (3)
Follow-up period, years*, mean (SD)	5.4 (2.0)	5.8 (1.4)	5.6 (2.0)	4.8 (3.2)	5.0 (3.2)
Lung characteristics					
FVC% predicted,* mean (SD)	87 (21.1)	95 (23.3)	90 (21.8)	85 (20.4)	85 (19.7)
DL _{CO} % predicted,* mean (SD)	59 (18.3)	61 (17.8)	60 (17.9)	58 (19.3)	60 (16.8)
ΔFVC% predicted,† mean (SD)	-0.1 (10.2)	-18 (7.9)	-7 (1.3)	0.3 (2.2)	12 (7.0)
ΔDL _{CO} % predicted,† mean (SD)	-0.7 (12.2)	-4 (15.4)	2 (12.8)	-0.3 (10.9)	0.9 (11.9)
NYHA class, n (%)	N=797	n=99	n=119	n=377	n=202
1	363 (44)	44 (44)	57 (46)	167 (42)	95 (46)
2	317 (38)	42 (42)	44 (36)	152 (38)	79 (38)
3	103 (13)	10 (10)	17 (14)	50 (13)	26 (13)
4	14 (2)	3 (3)	1 (1)	8 (2)	2 (1)
Other characteristics					
mRSS, mean (SD)	N=747 10 (8.1)	n=96 11 (7.6)	n=112 10 (8.5)	n=352 10 (7.6)	n=187 10 (8.8)
ΔmRSS,† mean (SD)	N=698 -0.4 (4.6)	n=88 0.5 (4.3)	n=103 -0.4 (3.1)	n=337 -0.3 (4.4)	n=170 -1.2 (5.6)
Reflux/dysphagia symptoms, n (%)	547/822 (67)	76/100 (76)	83/122 (68)	261/393 (66)	127/207 (61)
Digital ulcers, n (%)	266/808 (32)	35/100 (35)	38/118 (31)	141/386 (36)	5/204 (25)
Tendon friction rubs, n (%)	73/804 (9)	7/99 (7)	10/119 (8)	35/383 (9)	21/203 (10)
Synovitis, n (%)	117/810 (14)	18/100 (18)	15/120 (13)	60/386 (16)	24/204 (12)
Muscle weakness, n (%)	182/814 (22)	25/100 (25)	31/120 (25)	78/388 (20)	48/206 (23)
Scleroderma renal crisis, n (%)	11/818 (1)	4/100 (4)	3/120 (2)	6/391 (2)	1/206 (0.5)
ESR, mean (SD)	766 (93) 26 (20.6)	98 (98) 29 (23.9)	115 (93) 25 (21.7)	361 (91) 26 (19.5)	192 (93) 25 (20.2)
Elevated CRP, n (%)	217/797 (27)	40/99 (30)	25/120 (33)	98/377 (26)	49/201 (24)
Immunosuppressant use, n (%)	89/244 (37)	8/20 (40)	8/31 (26)	51/121 (42)	22/72 (31)

Significant progression (FVC decline of >10%); moderate progression (FVC decline of 5% to 10%); stable ILD (FVC decline or improvement of <5%); moderate improvement (FVC improvement of 5% to 10%). Definitions of organ manifestations were described previously.^{3,28} All characteristics were assessed before or on the index date. The following treatment options were received by the included patients at baseline, and for this study were defined as immunosuppressive: prednisone >10 mg/day, azathioprine, cyclophosphamide, mycophenolate, methotrexate or rituximab.

*Available for all 826 patients.

†Change from baseline to 12 months.

Ab, antibody; CRP, C-reactive protein; DL_{CO}, diffusion capacity of the lungs for carbon monoxide; ESR, erythrocyte sedimentation rate; FVC, forced vital capacity; mRSS, modified Rodnan skin score; NYHA, New York Heart Association; SSc, systemic sclerosis; SSc-ILD, systemic sclerosis-associated interstitial lung disease.

analyses of disease course in SSc-ILD have found different disease patterns in different patient cohorts.⁸⁻¹¹ However, these studies are limited by their small sample size, selected patient populations, significant referral biases and statistical instabilities of the trajectories. Randomised clinical trials provide valuable data, but the 12-month or 24-month duration often used¹²⁻¹⁴ is insufficient for assessment of long-term disease course. There also remains a high unmet need to specifically identify patients with SSc at risk of progressive ILD. Risk factors for SSc-ILD progression have been proposed by several studies;¹⁵⁻²¹ however, their clinical applicability and specific power to predict progression

are limited. The optimal combination of risk factors to accurately predict progression has not been identified.

Treatments are available for SSc-ILD, but to date, nintedanib is the only approved treatment shown to reduce lung function decline in patients with SSc-ILD.^{14, 22, 23} Current clinical practice emphasises treatment of patients with progressive ILD,²⁴ and a recent study showed that nintedanib reduces decline of forced vital capacity (FVC) in progressive ILD associated with various underlying conditions, including connective tissue disease-associated ILD.²⁵ However, waiting for FVC decline and/or extensive ILD involvement neglects the opportunity of early

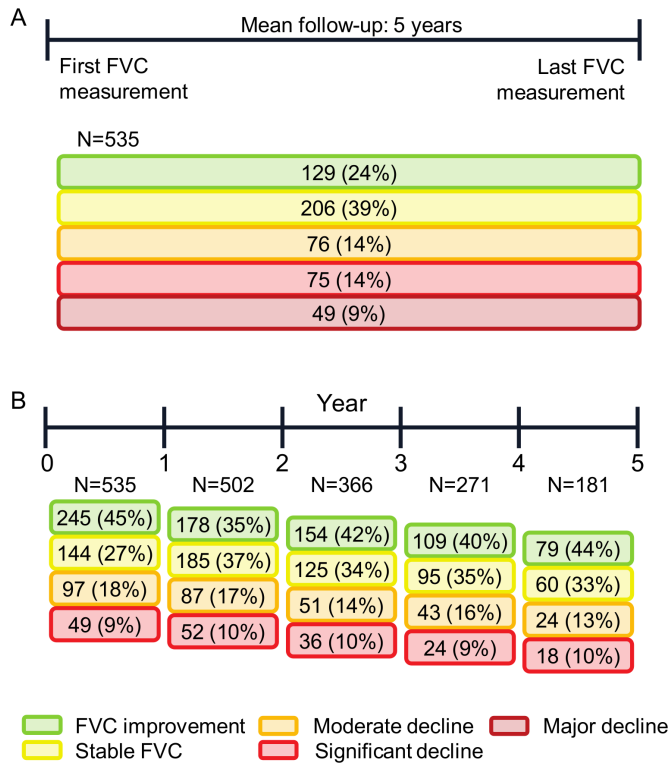


Figure 1 FVC changes among patients with SSc-ILD in the EUSTAR database (number of patients per category): (A) overall change during the 5-year follow-up period; (B) changes during each 12-month follow-up period. (A) Patients for whom ≥ 3 serial FVC measurements were available were divided into five disease course subgroups based on the overall difference between the first and last FVC measurement (% predicted): major decline (FVC decline of $>20\%$); significant decline (FVC decline of $>10\%$ to 20%); moderate decline (FVC decline of 5% to 10%); stable (FVC decline or improvement of $<5\%$); and improvement (FVC improvement of $\geq 5\%$). (B) Disease course each year was evaluated by determining the magnitude of FVC changes (% predicted) in each 12-month period during the mean 5-year follow-up defined as follows: significant decline (FVC decline of $>10\%$); moderate decline (FVC decline of 5% to 10%); stable (FVC decline or improvement of $<5\%$); and improvement (FVC improvement of $\geq 5\%$). EUSTAR, European Scleroderma Trials And Research; FVC, forced vital capacity; SSc-ILD, systemic sclerosis-associated interstitial lung disease.

treatment intervention until after clinically meaningful lung damage has occurred. Novel treatment concepts are therefore aiming to prevent progression and avoid irreversible damage to organs. This requires an understanding of the course and patterns of ILD progression, and reliable prediction algorithms that allow the specific detection of patients at risk of progression at a very early stage. Unfortunately, in SSc-ILD, this knowledge is currently lacking, and treatment initiation is often delayed in clinical practice by waiting for lung function decline over the preceding year before initiation.

The European Scleroderma Trials And Research (EUSTAR) group database is a large, real-world database representative of the general SSc population. It includes a wide range of patients with SSc-ILD, from those with mild and stable to advanced progressive disease.^{26 27}

Thus, the aims of this study were: to assess the prevalence of progressive ILD over 12-month periods; to examine disease course and identify patterns of ILD progression in SSc over a 5-year period; and to identify risk factors predictive for

progressive ILD in patients with SSc-ILD, using the EUSTAR database.

MATERIALS AND METHODS

Study design

Post hoc analyses of prospectively collected patient data from the EUSTAR database were conducted. The structure of the online database, the collected data set and definitions of clinical variables have been described in detail previously.^{3 28}

Patient population and characteristics

Patients registered since 2010 in the EUSTAR database (start of the online version), aged ≥ 18 years, who fulfilled the 2013 American College of Rheumatology/European League Against Rheumatism SSc classification criteria,^{29 30} with presence of ILD by HRCT or X-ray; recorded disease duration; and with available measurements of FVC and diffusion capacity of the lungs for carbon monoxide (DL_{CO}) at baseline and after 12 ± 3 months were included.

Progressive ILD measured by FVC changes in a 12-month period

To reflect clinical practice with respect to patient follow-up, and the usual study duration in clinical SSc-ILD trials, absolute changes in FVC% predicted were first evaluated over a 1-year period (baseline to 12 ± 3 months).^{8 14 31 32} FVC decline $\geq 10\%$ predicted is frequently used to define significant ILD progression and was therefore selected in this study as the main outcome measure for progressive ILD. Furthermore, an FVC decline $>5\%$ predicted is greater than the estimated minimum clinically important difference at a group level and has previously been associated with increased mortality in SSc.^{33 34} Patients were therefore divided into four progressive ILD subgroups based on absolute change in FVC% predicted from baseline to 12 ± 3 months: significant progression (decline of $>10\%$); moderate progression (decline of 5% to 10%); stable ILD (decline or improvement of $<5\%$); and improvement (improvement of $\geq 5\%$) (table 1). The prevalence of annual FVC changes was assessed prospectively in patients with available data over a mean follow-up of 5 years, using the definitions of progressive ILD described above.

Progressive ILD measured by changes in FVC and DL_{CO} over 12 months

A decline in FVC of $\geq 10\%$, or a decline in FVC of 5% to 10% along with a decline in DL_{CO} of 15% , is a proposed definition of progressive fibrosis.^{8 31 35 36} Therefore, we also assessed the prevalence of this combined endpoint.

Disease course and patterns in patients with SSc-ILD, measured by change in FVC from baseline to last available measurement

Because annual FVC patterns can change over time, we evaluated the overall lung function course in patients who had at least two 12-month periods with FVC measurements. These periods could be, but did not need to be, consecutive. For the overall FVC course, patients were divided into five subgroups based on the difference between the first and last available FVC measurement: major decline (FVC decline of $>20\%$); significant decline (FVC decline of $>10\%$ and $\leq 20\%$); moderate decline (FVC decline of 5% to 10%); stable (FVC decline or improvement of $<5\%$); and improvement (FVC improvement of $\geq 5\%$).

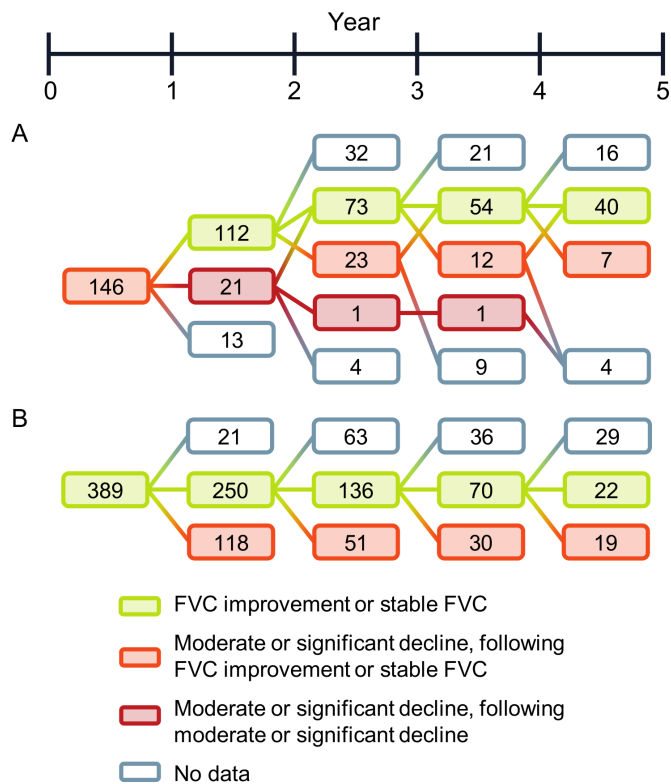


Figure 2 FVC changes in consecutive 12-month periods among patients with SSc-ILD in the EUSTAR database (number of patients per category): (A) subsequent course among patients with stable or improved FVC during the first year of follow-up; (B) subsequent course among patients with minor or moderate decline during the first year of follow-up and those who had further declines. Disease course each year was evaluated by determining the magnitude of FVC changes (% predicted) in individual patients in each 12-month period during the mean 5-year follow-up, defined as follows: significant decline (FVC decline of >10%); moderate decline (FVC decline of 5% to 10%); stable (FVC decline or improvement of <5%); and improvement (FVC improvement of \geq 5%). EUSTAR, European Scleroderma Trials And Research; FVC, forced vital capacity; SSc-ILD, systemic sclerosis-associated interstitial lung disease.

The numbers of patients who experienced no 12-month period of decline, one period of decline (moderate or significant) or multiple periods of decline (moderate, significant or both) across all periods with data available over the 5-year follow-up were assessed. Patients with ILD progression were split into different progression patterns according to the number of FVC decline periods: rapid progression (no periods of FVC stability or improvement); progression (more periods of decline than stability/improvement); and slow progression (more periods of stability/improvement than decline).

Mortality

All-cause mortality was assessed in all patients with SSc-ILD, and in patients with progressive ILD, until last available follow-up.

Risk factors predictive for progressive ILD

Candidate baseline variables to predict progressive ILD were selected based on reports from the published literature and expert opinion: sex,¹⁵ age,¹⁶ reflux/dysphagia symptoms,^{17 18} SSc subtype,¹⁶ antibody status (anti-topoisomerase antibody (ATA) anti-centromere antibody (ACA), anti-RNA polymerase

III antibody (ARA)),^{16 19} baseline FVC,^{16 20} baseline DL_{CO},^{16 21} disease duration,^{11 15 37 38} skin involvement measured by modified Rodnan skin score (mRSS),^{16 19 21 39} erythrocyte sedimentation rate (ESR), C-reactive protein (CRP) level, dyspnoea class, treatment, synovitis and muscle weakness.¹⁶ Extent of lung fibrosis on HRCT was not included due to extensive missing data.

Statistical methods

All analyses were performed using IBM SPSS Statistics V.25 and Stata V.15. Pearson χ^2 test, Fisher's exact test or independent sample t-test was used, as appropriate. For correlation analyses, Pearson or Kendall's tau-b coefficients were applied as appropriate. All multivariable analyses were preceded by estimation of correlation between risk factors. Univariable and multivariable logistic regression analyses with OR and 95% CI were applied to analyse the predictive ability of baseline variables for progressive ILD. In the multivariable analyses, 10 events per variable were needed, and the variables were selected by expert opinion.

Univariable and multivariable linear mixed-effect models were performed to identify risk factors of longitudinal changes in FVC (% predicted) over the maximum 5-year follow-up period (baseline, 1, 2, 3, 4 and 5 years). Only patients with at least three serial FVC measurements were included in the analyses. Time and risk factors were fixed effects. Interaction effects between time and fixed factors were checked by including product terms in the models. Only significant interaction terms in the univariable analysis are presented, and they were further included in the multivariable model. Risk factors selected for multivariable analyses were based on expert opinion. All models included random intercept and slope, and an unstructured correlation matrix was used.

Patient and public involvement

EUSTAR is part of the World Scleroderma Foundation, which has patient representatives from the Federation of European Scleroderma Associations (FESCA) in its governing board.

RESULTS

Patient population

Within the EUSTAR database, 6004 patients included since 2010 aged \geq 18 years fulfilled the SSc classification criteria and had lung imaging data available. Of these, 2259 (38%) had evidence of SSc-ILD on imaging, of which 826 had valid lung function data available after 12 ± 3 months follow-up and were eligible for inclusion.

Demographic and clinical characteristics of all eligible patients are shown in table 1. No significant difference was observed in the baseline characteristics of the 826 eligible patients and the 1433 ineligible patients (online supplementary table S1).

Prevalence and risk factors of progressive ILD at 12 months

When analysing the prevalence of progressive ILD within the initial 12-month period, we found that 100 patients (12%) had significant ILD progression, 123 (15%) had moderate progression, 396 (48%) were stable and 207 (25%) had improvement.

In multivariable logistic regression analyses, FVC (OR 1.02; 95% CI 1.01 to 1.03; $p < 0.001$), presence of reflux/dysphagia symptoms (OR 1.97; 95% CI 1.14 to 3.40; $p = 0.016$) and mRSS (OR 1.06; 95% CI 1.00 to 1.12; $p = 0.036$) at baseline were predictive for significant ILD progression at 12 ± 3 months. No association was seen with age, sex, disease duration, antibody status, SSc subtype or immunosuppressant treatment.

Table 2 Number of patients (n (%)) with SSc-ILD in the EUSTAR database with 12-month periods of FVC decline, stratified by overall FVC decline from first to last available FVC measurement

Overall FVC change from baseline to last FVC	One 12-month period with FVC decline			Two or more 12-month periods with FVC decline		
	No decline (n=178)	Moderate decline (n=113)	Significant decline (n=107)	Only moderate declines (n=65)	One significant and ≥ 1 moderate decline (n=25)	Only significant declines (n=47)
Improved (n=129)	79 (44)	22 (20)	21 (20)	1 (2)	3 (12)	3 (6)
Stable (n=206)	99 (56)	59 (53)	29 (27)	13 (20)	1 (4)	5 (11)
Moderate decline (n=76)		28 (25)	17 (16)	25 (39)	1 (4)	5 (11)
Significant decline (n=75)		2 (2)	29 (27)	23 (35)	10 (40)	11 (23)
Major decline (n=49)		2 (2)	11 (10)	3 (5)	10 (40)	23 (49)

Overall FVC change from baseline to last FVC: major decline (FVC decline of $>20\%$); significant decline (FVC decline of $>10\%$ and $\leq 20\%$); moderate decline (FVC decline of 5% to 10%); stable (FVC decline or improvement of $<5\%$); and improvement (FVC improvement of $\geq 5\%$).

EUSTAR, European Scleroderma Trials And Research; FVC, forced vital capacity; SSc-ILD, systemic sclerosis-associated interstitial lung disease.

Prevalence and prediction of progressive ILD measured by the combined FVC and DL_{CO} definition over the initial 12-month period were comparable to these data (online supplementary table S1 and figure S1).

Disease course and ILD patterns in patients with SSc-ILD

A total of 535 (65%) patients with SSc-ILD had ≥ 3 FVC measurements available during the mean 5-year (± 2.2) follow-up period, allowing for assessment of long-term ILD course. Baseline characteristics did not differ between patients with ≥ 3 and patients with < 3 FVC measurements (n=291 (35%)).

To assess the overall disease course, we assessed FVC changes between baseline and last available FVC. We found that 49 (9%) showed major FVC decline (FVC decline of $>20\%$); 75 (14%) had significant decline (FVC decline 10% to 20%); 76 (14%) had moderate decline (FVC decline 5% to 10%); 206 (39%) were stable (FVC changes $<5\%$); and 129 (24%) experienced improvement in FVC (FVC improvement $>5\%$) over the overall disease course (mean 5-year follow-up) (figure 1A). The prevalence of significant ILD progression was between

13% and 18% and the prevalence of moderate progression was between 9% and 10% in each 12-month period over this 5-year follow-up (figure 1B). These progressive periods rarely appeared in consecutive 12-month periods, and progressive periods were mostly followed by stable periods (figure 2A). Stable periods were followed by a progressive period in about 30% of cases (figure 2B). Irrespective of the severity of overall FVC decline (major, significant or moderate), most patients still experienced at least one 12-month period of stable or improving FVC (table 2). On the other hand, patients with stable or improved overall FVC could still experience 12-month periods of FVC decline; these declines were more frequently moderate (FVC decline 5% to 10%) than significant (FVC decline 10% to 20%). Only 178 (33%) patients experienced no period of FVC decline of $\geq 5\%$ during any 12-month period (table 2).

Most patients with SSc-ILD with an overall FVC decline over 5 years had a slow pattern of lung function decline, with more periods of stability/improvement than decline (58%); 34% showed a progressive pattern, with more periods of decline than stability/improvement and slow progression. Only 16 (8%)

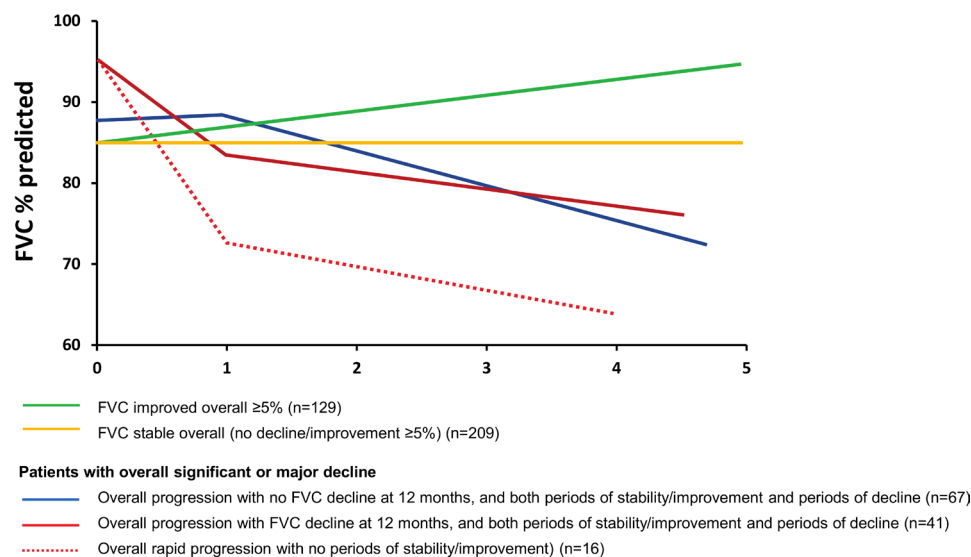


Figure 3 Patterns of disease course in SSc-ILD. Overall disease course was evaluated by determining the magnitude of FVC changes (% predicted) in individual patients from baseline to the end of follow-up defined as follows: major decline (FVC decline of $>20\%$); significant decline (FVC decline of 10% to 20%); moderate decline (FVC decline of 5% to 10%); stable (FVC decline or improvement of $<5\%$); and improvement (FVC improvement of $\geq 5\%$). Patterns of disease progression are shown in patients with improved FVC, stable FVC and those with significant or major decline. FVC, forced vital capacity; SSc-ILD, systemic sclerosis-associated interstitial lung disease.

Table 3 Risk factors for change in FVC over the 5-year follow-up in patients with ≥ 3 serial FVC measurements in univariable and multivariable linear mixed-effect regression analysis

Predictor variable	Univariable			Multivariable		
	Coefficient	95% CI	P value	Coefficient	95% CI	P value
Time	-0.45	-0.72 to -1.7	0.002	0.8	0.22 to 1.39	0.007
Reflux/dysphagia symptoms	-2.06	-5.06 to 0.94	0.180	0.58	-2.18 to 3.34	0.681
Time \times reflux/dysphagia symptoms	-0.76	-1.34 to -0.17	0.011	-0.72	-1.34 to -0.10	0.024
mRSS	-0.51	-0.69 to -0.33	<0.001	-0.31	-0.47 to -0.15	<0.001
Time \times mRSS	-0.05	-0.07 to -0.01	0.011	-0.06	-0.10 to -0.02	0.002
Sex	-5.25	-8.91 to -1.59	0.005	-3.90	-7.29 to -0.53	0.024
Time \times sex	-0.97	-1.72 to -0.21	0.012	-1.30	-2.10 to -0.49	0.002
Age	0.42	0.31 to 1.53	<0.001	0.47	0.37 to 0.57	<0.001
DL _{CO}	0.55	0.47 to 0.62	<0.001	0.45	0.37 to 0.52	<0.001
ESR	-0.14	-0.21 to -0.01	0.001	-0.09	-0.15 to -0.03	0.005
NYHA class	-14.59	-18.7 to -10.49	<0.001	-4.76	-6.59 to -2.92	<0.001
ACA	11.42	7.65 to 15.19	<0.001			
ARA	10.95	1.62 to 20.27	0.021			
ATA	-5.01	-7.98 to -2.05	0.001			
CRP	-7.72	-11.01 to -4.43	<0.001			
dcSSc	-6.37	-7.43 to -3.32	<0.001			

ACA, anti-centromere antibody; ARA, anti-RNA polymerase III antibody; ATA, anti-topoisomerase I antibody; CRP, C-reactive protein; dcSSc, diffuse cutaneous systemic sclerosis; DL_{CO}, diffusion capacity of the lungs for carbon monoxide; ESR, erythrocyte sedimentation rate; FVC, forced vital capacity; mRSS, modified Rodnan skin score; NYHA, New York Heart Association.

patients showed a rapidly declining FVC pattern, with several consecutive episodes of FVC decline and no periods of FVC stability or improvement. Patterns of progression in patients with moderate, significant and major overall decline in FVC%, stratified by the presence or absence of a decline in the first 12 months, are shown in [figure 3](#).

Risk factors predictive of 5-year FVC decline

To identify SSc-ILD patients at risk of ILD progression, we assessed the predictive value of baseline clinical variables on FVC measurements over the 5-year follow-up period. In multivariable linear mixed-effect models, we identified male sex, presence of reflux/dysphagia symptoms and high baseline mRSS as the strongest predictors, with significant interaction effects between time and these variables. This indicates that FVC changed differently over time as a function of one of these predictors (ie, different slopes). Older age, higher DL_{CO}, dyspnoea (New York Heart Association class 3 or 4) and increased ESR were also significantly predictive for FVC decline but without a time interaction effect, indicating that the FVC changed significantly over time but not differently between patients with or without these clinical features ([table 3](#)). Immunosuppressive treatment was not predictive for FVC decline over time.

Mortality

Of 826 patients with SSc-ILD, 85 (10%) died during follow-up. There were no significant differences in mortality rate between patients with significant ILD progression (11 (12%)), moderate progression (18 (15%)) or stable ILD (36 (9%)) over the initial 12 \pm 3-month period. In patients with overall FVC changes measured between baseline and last available FVC, death occurred in 9 of 49 (19%) patients with major decline; 7 of 75 (9%) patients with significant decline; 12 of 76 patients (16%) with moderate decline; 18 of 206 (9%) patients who were stable; and 9 of 129 (7%) patients with improvement, with differences not statistically significant. As there were only a small number of events, no regression analyses were performed.

DISCUSSION

This is the largest study to prospectively analyse the prevalence of progressive ILD in patients with SSc-ILD, and the first to describe comprehensively the disease course and patterns of ILD progression in patients with SSc over the long term.

The proportion of patients with SSc-ILD who experienced progressive ILD during the initial 12 \pm 3-month period was 27%, and in each 12-month period over the mean 5-year follow-up, 23% to 27% of patients experienced progression. These findings are in agreement with estimates of progressive ILD prevalence of 31% to 32% derived from serial lung function data in patients with SSc⁶ and an international physician survey.⁴⁰

Here, we show that patterns of FVC are frequently inconsistent between consecutive 12-month periods. Most patients who experienced an overall decline in FVC had periods of FVC improvement and, conversely, some patients whose FVC improved overall had periods of FVC decline. Patients with overall major FVC decline (FVC decline >20% over the entire study period) usually had several 12-month periods with FVC decline >10% rather than FVC decline of 5% to 10%. Others experienced a slower, but cumulative course of declining FVC. Such patients with slower progression can easily be overlooked in clinical practice and in current treatment strategies that target patients who progress rapidly and with significant FVC changes. Smaller changes in FVC (5% to 10%) may in themselves be clinically significant, as seen in patients with idiopathic pulmonary fibrosis.^{41 42} In clinical practice, this means that FVC decline >5% should alert physicians, especially when multiple declines occur, even when not in consecutive periods. These results highlight a pitfall in current clinical practice, where treatment is often initiated after FVC decline has happened, and thus when lung damage has already occurred.²⁴ Novel treatment concepts are needed and should aim for prevention of progression to avoid irreversible organ damage. These results also stress and highlight the need for close monitoring of all patients with SSc-ILD, as also recently suggested by the European expert consensus.⁴³ Respiratory symptoms, changes in HRCT findings and desaturation on

exercise tests should all be implemented in clinical practice to assess ILD progression and aid treatment decisions.

Robust predictive risk factors are very important for the early identification of progressive patients. Our large, multicentre study demonstrates that skin fibrosis (higher mRSS), male sex and the presence of reflux/dysphagia symptoms are the strongest predictors for FVC decline over time. Other predictive parameters included the presence of inflammation (higher ESR) and shorter disease duration, which are already frequently used as enrichment strategies for clinical studies. These parameters may also be applied in daily clinical practice, helping to identify patients who should receive treatment early, even before the first FVC decline has occurred. However, if earlier treatment of patients at risk for FVC decline truly leads to better outcomes, it needs to be analysed in appropriate randomised controlled clinical trials in the future. Risk factors identified in this study are potential inclusion criteria for such a trial. Interestingly, contrary to our finding that higher FVC at baseline was predictive for ILD progression, previous studies suggested that lower FVC at baseline is a risk factor for progressive ILD.^{16 20} These studies included some SSc patients without ILD, and one study assessed patients within 3 years of SSc diagnosis. Furthermore, definitions of progression (FVC decline of $\geq 15\%$,²⁰ FVC or DL_{CO} decline of $\geq 15\%$, or FVC or DL_{CO} falling below 55%¹⁶) differed from those in our study. The strongest association with further FVC decline was seen in patients with baseline FVC $< 65\%$ predicted,¹⁶ lower than the mean value in our study (86%). Our contrasting findings may reflect these differences and should be assessed in other unselected cohorts.

Strengths of our study include the use of a large set of prospective, representative real-world data, which increases the applicability of our results to clinical practice and different definitions of ILD progression. Nonetheless, this study has several limitations. While the data were gathered prospectively, this was a post hoc analysis. No central lung function reading was conducted, increasing the variability of FVC and DL_{CO}. Most patients with SSc-ILD in the database (1433/2259) did not have serial lung function data. Data on immunosuppressant use were only available for 244/826 eligible patients, and the exact date of initiation, treatment indication and cumulative doses are unknown. Several studies^{7 8 15} have suggested that the extent of lung fibrosis by HRCT is prognostic for disease progression and mortality in SSc-ILD. Although data regarding the extent of lung fibrosis were not available in the database for the present analysis, they may be a valuable addition in future studies. Recent analyses also suggest that mRSS progression is an important risk factor for later FVC progression,³⁹ which was not analysed in this study. A lead time bias cannot be excluded, as this was not an incident cohort. Finally, ILD-specific mortality was not available in the EUSTAR database. Here, all-cause mortality was not influenced by ILD progression; as recently highlighted,⁵ it is likely that ILD-specific mortality differs between progressive and stable ILD patients.

CONCLUSION

This study provides novel insights into the occurrence of progressive ILD in SSc-ILD. The results stress the heterogeneity and variability of the course of ILD in SSc. Close monitoring of patients with SSc-ILD and awareness of the variable course of progression is of high importance in considering when to initiate treatment.

Author affiliations

¹Department of Rheumatology, Oslo University Hospital, Oslo, Norway

²Department of Rheumatology A, Descartes University, APHP, Cochin Hospital, Paris, France

³Boehringer Ingelheim International GmbH, Ingelheim am Rhein, Germany

⁴Oslo Centre for Biostatistics and Epidemiology, Research Support Services, Oslo University Hospital - Rikshospitalet, Oslo, Norway

⁵UO Reumatologia e Immunologia Clinica, Spedali Civili di Brescia, Brescia, Italy

⁶VA Nasonova Institute of Rheumatology, Moscow, Russian Federation

⁷Department of Rheumatology and Immunology, Medical School, University of Pécs, Pécs, Hungary

⁸Dipartimento di Medicina Sperimentale e Clinica, Università degli Studi di Firenze, Firenze, Italy

⁹Department of Internal Medicine and Clinical Immunology, Hôpital Claude Huriez, University of Lille, Lille, France

¹⁰Department of Rheumatology, Peking Union Medical College Hospital (West Campus), Beijing, China

¹¹Department of Rheumatology, University Hospital Zurich, Zurich, Switzerland

¹²Department of Rheumatology and Clinical Immunology, University of Lübeck, Lübeck, Germany

¹³Joint Rheumatology Programme, National & Kapodistrian University of Athens Medical School, Athens, Greece

¹⁴Department of Rheumatology and Internal Medicine, Medical University of Białystok, Białystok, Poland

¹⁵Department of Precision Medicine, Section of Rheumatology, University of Campania Luigi Vanvitelli, Naples, Italy

Correction notice This article has been corrected since it published Online First. The collaborator group, EUSTAR, has been added to the author list and affiliations updated.

Acknowledgements The authors meet criteria for authorship as recommended by the International Committee of Medical Journal Editors (ICMJE). The authors received no direct compensation related to the development of the manuscript. Editorial support was provided by John Carron, PhD, of Nucleus Global, which was contracted and funded by Boehringer Ingelheim International GmbH (BI). This analysis, using the EUSTAR database, was funded by BI. BI was given the opportunity to review the manuscript for medical as well as scientific accuracy and intellectual property considerations, if applicable. Authors maintained full editorial control over the content of the manuscript and were responsible for all final decisions on manuscript content, for final approval of the version for submission, and of the version for publication.

Collaborators On behalf of EUSTAR collaborators: Marco Matucci Cerinic (Florence (Italy)); Ulrich Walker (Basel (Switzerland)); Florenzo Iannone (Bari (Italy)); Radim Becvar (Prague (Czech Republic)); Gabriele Valentini (Naples (Italy)); Elise Siegert (Berlin (Germany)); C. Montecucco (Pavia (Italy)); Patricia E. Carreira (Madrid (Spain)); Carlo Chizzolini (Geneva (Switzerland)); Eugene J. Kucharz (Katowice (Poland)); Andrea Doria (Padova (Italy)); Pr Dominique Farge Bancel (Paris (France)); Roger Hesselstrand (Lund (Sweden)); Alexandra Balbir-Gurman (Haifa (Israel)); Raffaele Pellerito (Torino (Italy)); Cristian Caimmi (Verona (Italy)); Christopher Denton (London (United Kingdom)); Nemanja Damjanov (Belgrade (Serbia & Montenegro)); Jörg Henes (Tübingen (Germany)); Vera Ortiz-Santamaria Granollers (Barcelona (Spain)); Stefan Heitmann (Stuttgart (Germany)); Maria João Salvador (Coimbra (Portugal)); Bojana Stamenkovic (Niska Banja (Serbia and Montenegro)); Carlo Francesco Selmi (Rozzano (Italy)); Ariane Herrick (Salford (United Kingdom)); Ulf Müller-Ladner (Bad Nauheim (Germany)); Merete Engelhart (Hellerup (Denmark)); Valeria Riccieri (Roma (Italy)); Ruxandra Maria Ionescu (Bucharest (Romania)); Ana Maria Gheorghiu (Bucharest (Romania)); Cord Sunderkötter (Münster (Germany)); Jörg Distler (Erlangen (Germany)); Francesca Ingegnoli (Milano (Italy)); Luc Mouthon (Paris (France)); Vanessa Smith (Gent (Belgium)); Francesco Paolo Cantatore (Foggia (Italy)); Susanne Ullman (Copenhagen (Denmark)); Maria Rosa Pozzi (Monza (Italy)); Piotr Wiland (Wroclaw (Poland)); Marie Vanthuyne (Brussels (Belgium)); Brigitte Krummel-Lorenz, Petra Saar (Frankfurt (Germany)); Kristine Herrmann (Dresden (Germany)); Ellen De Langhe (Leuven (Belgium)); Branimir Anic, Marko Baresic, Miroslav Mayer (Zagreb (Croatia)); Sule Yavuz (Altunizade-Istanbul (Turkey)); Carolina de Souza Müller (Curitiba (Brasil)); Thierry Zenone (Valence (France)); Alessandro Mathieu; Alessandra Vacca (Monserrato (CA) (Italy)); Kamal Solanki (Hamilton (New Zealand)); Edoardo Rosato (Roma (Italy)); Fahrettin Oksel Figen Yargucu (Borova, Izmir (Turkey)); Cristina-Mihaela Tanaseanu (Bucharest (Romania)); Rosario Foti (Catania (Italy)); Daniel E. Furst (Los Angeles (USA)); Peter Villiger Sabina Adler (Bern (Switzerland)); Paloma García de la Peña Lefebvre, Jorge Juan González Martín (Madrid (Spain)); Ira Litinsky (Tel-Aviv (Israel)); Francesco Del Galdo (Leeds (United Kingdom)); Goda Seskute (Vilnius (Lithuania)); Lesley Ann Saketkoo (New Orleans (USA)); Eduardo Kerzberg (Buenos Aires (Argentina)); Ivan Castellví (Barcelona (Spain)); François Spertini (Lausanne (Switzerland)); Vivien M. Hsu (New Brunswick (USA)); Thierry Martin (Strasbourg (France)); Tim Schmeiser (Wuppertal-Elberfeld (Germany)); Dominik Majewski (Poznan (Poland)); Vera Bernardino (Lisboa (Portugal)); Piercarlo Sarzi Puttini (Milano (Italy)).

Contributors The authors meet criteria for authorship as recommended by the International Committee of Medical Journal Editors (ICMJE). Authors maintained full

editorial control over the content of the manuscript and were responsible for all final decisions on manuscript content, for final approval of the version for submission and the version for publication.

Funding The study was funded by Boehringer Ingelheim International GmbH, Ingelheim am Rhein, Germany.

Competing interests A-MH-V received research funding and/or consulting fees or other remuneration from Actelion, Boehringer Ingelheim, Roche, Bayer, Thermo Fisher, MSD, Arxx and Medscape. YA received research funding and/or consulting fees from Actelion, Alpine, Bayer, BMS, Boehringer Ingelheim, Inventiva, Italfarmaco, Genentech Roche, Sanofi and Servier. MA is an employee of Boehringer Ingelheim. LA received consulting fees or other remuneration from Boehringer Ingelheim and Roche. LC received consulting fees from Actelion, Bayer, Boehringer Ingelheim, Medac, Pfizer and Roche. EH received research funding and/or consulting fees or other remuneration from Actelion, Bayer, GSK and Pfizer. CM received consulting fees or other remuneration from Actelion, Geneva, Roche and Rofarm. OK-B received consulting fees or other remuneration from Bayer, Boehringer Ingelheim, Inventiva, Medac, Novartis and Roche. OD received consulting fees and/or research funding from A.Menarini, Acceleron Pharma, Amgen, AnaMar, Bayer, Blade Therapeutics, Boehringer Ingelheim, Catenion, CSL Behring, ChemomAb, Ergonex, Glenmark Pharmaceuticals, GSK, Inventiva, Italfarmaco, iQone, IQVIA, Lilly, Medac, Medscape, Mitsubishi Tanabe Pharma, MSD, Novartis, Pfizer, Roche, Sanofi, Target Bioscience and UCB in the area of potential treatments of scleroderma and its complications, and holds Patent mir 29 for the treatment of systemic sclerosis (US8247389, EP2331143). CB, PA, SG, ML, GR, AR and PPS have no competing interests to disclose.

Patient and public involvement Patients and/or the public were involved in the design, or conduct, or reporting, or dissemination plans of this research. Refer to the Methods section for further details.

Patient consent for publication Not required.

Provenance and peer review Not commissioned; externally peer-reviewed.

Data availability statement Data are available upon reasonable request.

Open access This is an open access article distributed in accordance with the Creative Commons Attribution 4.0 Unported (CC BY 4.0) license, which permits others to copy, redistribute, remix, transform and build upon this work for any purpose, provided the original work is properly cited, a link to the licence is given, and indication of whether changes were made. See: <https://creativecommons.org/licenses/by/4.0/>.

ORCID iDs

Anna-Maria Hoffmann-Vold <http://orcid.org/0000-0001-6467-7422>
Yannick Allanore <http://orcid.org/0000-0002-6149-0002>
Eric Hachulla <http://orcid.org/0000-0001-7432-847X>
Mengtao Li <http://orcid.org/0000-0003-4252-2889>
Petros P Sfikakis <http://orcid.org/0000-0001-5484-2930>
Oliver Distler <http://orcid.org/0000-0002-0546-8310>

REFERENCES

- Allanore Y, Simms R, Distler O, et al. Systemic sclerosis. *Nat Rev Dis Primers* 2015;1:15002.
- Ranque B, Mouthon L. Geoeidemiology of systemic sclerosis. *Autoimmun Rev* 2010;9:A311–8.
- Elhai M, Meune C, Boubaya M, et al. Mapping and predicting mortality from systemic sclerosis. *Ann Rheum Dis* 2017;76:1897–905.
- Cottin V, Brown KK. Interstitial lung disease associated with systemic sclerosis (SSc-ILD). *Respir Res* 2019;20:13.
- Hoffmann-Vold A-M, Fretheim H, Halse A-K, et al. Tracking impact of interstitial lung disease in systemic sclerosis in a complete nationwide cohort. *Am J Respir Crit Care Med* 2019;200:1258–66.
- Hoffmann-Vold A-M, Aaløkken TM, Lund MB, et al. Predictive value of serial high-resolution computed tomography analyses and concurrent lung function tests in systemic sclerosis. *Arthritis Rheumatol* 2015;67:2205–12.
- Goh NSL, Desai SR, Veerarahavan S, et al. Interstitial lung disease in systemic sclerosis: a simple staging system. *Am J Respir Crit Care Med* 2008;177:1248–54.
- Goh NS, Hoyle RK, Denton CP, et al. Short-Term pulmonary function trends are predictive of mortality in interstitial lung disease associated with systemic sclerosis. *Arthritis Rheumatol* 2017;69:1670–8.
- Guler SA, Winstone TA, Murphy D, et al. Does systemic sclerosis-associated interstitial lung disease burn out? specific phenotypes of disease progression. *Ann Am Thorac Soc* 2018;15:1427–33.
- Man A, Davidyock T, Ferguson LT, et al. Changes in forced vital capacity over time in systemic sclerosis: application of group-based trajectory modelling. *Rheumatology* 2015;54:1464–71.
- Steen VD, Conte C, Owens GR, et al. Severe restrictive lung disease in systemic sclerosis. *Arthritis Rheum* 1994;37:1283–9.
- Khanna D, Tseng C-H, Farmani N, et al. Clinical course of lung physiology in patients with scleroderma and interstitial lung disease: analysis of the scleroderma lung study placebo group. *Arthritis Rheum* 2011;63:3078–85.
- Tashkin DP, Volkman ER, Tseng C-H, et al. Improved Cough and Cough-Specific Quality of Life in Patients Treated for Scleroderma-Related Interstitial Lung Disease: Results of Scleroderma Lung Study II. *Chest* 2017;151:813–20.
- Distler O, Highland KB, Gahlemann M, et al. Nintedanib for systemic sclerosis-associated interstitial lung disease. *N Engl J Med* 2019;380:2518–28.
- Winstone TA, Assayag D, Wilcox PG, et al. Predictors of mortality and progression in scleroderma-associated interstitial lung disease: a systematic review. *Chest* 2014;146:422–36.
- Nihtyanova SI, Schreiber BE, Ong VH, et al. Prediction of pulmonary complications and long-term survival in systemic sclerosis. *Arthritis Rheumatol* 2014;66:1625–35.
- Savarino E, Bazzica M, Zentilin P, et al. Gastroesophageal reflux and pulmonary fibrosis in scleroderma. *Am J Respir Crit Care Med* 2009;179:408–13.
- Zhang XJ, Bonner A, Hudson M, et al. Association of gastroesophageal factors and worsening of forced vital capacity in systemic sclerosis. *J Rheumatol* 2013;40:850–8.
- Assassi S, Sharif R, Lasky RE, et al. Predictors of interstitial lung disease in early systemic sclerosis: a prospective longitudinal study of the GENISOS cohort. *Arthritis Res Ther* 2010;12:R166.
- Plastiras SC, Karadimitrakis SP, Ziakas PD, et al. Scleroderma lung: initial forced vital capacity as predictor of pulmonary function decline. *Arthritis Rheum* 2006;55:598–602.
- Morgan C, Knight C, Lunt M. Predictors of end stage lung disease in a cohort of patients with scleroderma. *Ann Rheum Dis* 2003;62:146–50.
- Distler O, Brown KK, Distler JHW, et al. Design of a randomised, placebo-controlled clinical trial of nintedanib in patients with systemic sclerosis-associated interstitial lung disease (SENSCISTM). *Clin Exp Rheumatol* 2017;35 Suppl 106:75–81.
- U.S. Food and Drug Administration. FDA approves first treatment for patients with rare type of lung disease, 2019. Available: <https://www.fda.gov/news-events/press-announcements/fda-approves-first-treatment-patients-rare-type-lung-disease> [Accessed 31 Oct 2019].
- Kowal-Bielecka O, Fransen J, Avouac J, et al. Update of EULAR recommendations for the treatment of systemic sclerosis. *Ann Rheum Dis* 2017;76:1327–39.
- Flaherty KR, Wells AU, Cottin V, et al. Nintedanib in progressive fibrosing interstitial lung diseases. *N Engl J Med* 2019;381:1718–27.
- Tyndall A, Mueller-Ladner U, Matucci-Cerinic M. Systemic sclerosis in Europe: first report from the EULAR Scleroderma Trials and Research (EUSTAR) group database. *Ann Rheum Dis* 2005;64:1107.
- Walker UA, Tyndall A, Czirjak L, et al. Clinical risk assessment of organ manifestations in systemic sclerosis: a report from the EULAR Scleroderma Trials and Research group database. *Ann Rheum Dis* 2007;66:754–63.
- Meier FMP, Frommer KW, Dinsler R, et al. Update on the profile of the EUSTAR cohort: an analysis of the EULAR Scleroderma Trials and Research group database. *Ann Rheum Dis* 2012;71:1355–60.
- Masi AT, Subcommittee For Scleroderma Criteria of the American Rheumatism Association Diagnostic and Therapeutic Criteria Committee. Preliminary criteria for the classification of systemic sclerosis (scleroderma). *Arthritis Rheum* 1980;23:581–90.
- van den Hoogen F, Khanna D, Fransen J, et al. 2013 classification criteria for systemic sclerosis: an American College of Rheumatology/European League Against Rheumatism collaborative initiative. *Arthritis Rheum* 2013;65:2737–47.
- Cottin V, Hirani NA, Hotchkiss DL, et al. Presentation, diagnosis and clinical course of the spectrum of progressive-fibrosing interstitial lung diseases. *Eur Respir Rev* 2018;27:180076.
- Volkman ER, Tashkin DP, Sim M, et al. Short-Term progression of interstitial lung disease in systemic sclerosis predicts long-term survival in two independent clinical trial cohorts. *Ann Rheum Dis* 2019;78:122–30.
- Hoffmann-Vold A-M, Midtvedt O, Garen T, et al. Moderate decline in forced vital capacity is associated with a poor outcome in systemic sclerosis patients. *Arthritis Rheumatol* 2014;66:S316–7.
- Kafaja S, Clements PJ, Wilhalme H, et al. Reliability and minimal clinically important differences of forced vital capacity: results from the Scleroderma Lung Studies (SLS-I and SLS-II). *Am J Respir Crit Care Med* 2018;197:644–52.
- Distler O, Assassi S, Cottin V, et al. Predictors of progression in systemic sclerosis patients with interstitial lung disease. *Eur Respir J* 2020;55:1902026.
- Volkman ER. Natural history of systemic sclerosis-related interstitial lung disease: how to identify a progressive fibrosing phenotype. *J Scleroderma Relat Disord* 2020;5:31–40.
- Roth MD, Tseng C-H, Clements PJ, et al. Predicting treatment outcomes and Responder subsets in scleroderma-related interstitial lung disease. *Arthritis Rheum* 2011;63:2797–808.
- Moore OA, Proudman SM, Goh N, et al. Quantifying change in pulmonary function as a prognostic marker in systemic sclerosis-related interstitial lung disease. *Clin Exp Rheumatol* 2015;33:S111–6.
- Wu W, Jordan S, Graf N, et al. Progressive skin fibrosis is associated with a decline in lung function and worse survival in patients with diffuse cutaneous systemic sclerosis in the European Scleroderma Trials and Research (EUSTAR) cohort. *Ann Rheum Dis* 2019;78:648–56.

- 40 Wijsenbeek M, Kreuter M, Olson A, *et al*. Progressive fibrosing interstitial lung diseases: current practice in diagnosis and management. *Curr Med Res Opin* 2019;35:2015–24.
- 41 Gaspole IN, Chapman SA, Cooper WA, *et al*. Health-Related quality of life in idiopathic pulmonary fibrosis: data from the Australian IPF registry. *Respirology* 2017;22:950–6.
- 42 Zappala CJ, Latsi PI, Nicholson AG, *et al*. Marginal decline in forced vital capacity is associated with a poor outcome in idiopathic pulmonary fibrosis. *Eur Respir J* 2010;35:830–6.
- 43 Hoffmann-Vold A-M, Maher TM, Philpot EE, *et al*. The identification and management of interstitial lung disease in systemic sclerosis: evidence-based European consensus statements. *Lancet Rheumatol* 2020;2:e71–83.

Revision July 2020

Confidential

EUSTAR SSc-ILD Progression

Supplementary material

Progressive interstitial lung disease measured by forced vital capacity changes in combination with diffusion capacity of the lungs for carbon monoxide changes over 12-month periods

A decline in forced vital capacity (FVC) of $\geq 10\%$, or a decline in FVC of 5–10% along with a decline in diffusion capacity of the lungs for carbon monoxide (DL_{CO}) of 15%, is a proposed definition of progressive fibrosis in patients with interstitial lung disease (ILD), and is predictive of mortality in patients with systemic sclerosis (SSc)-ILD.[8, 31] We therefore also assessed the prevalence of this combined endpoint.

Materials and methods

Patients were divided into five progressive ILD subgroups based on absolute change in FVC and DL_{CO} (% predicted) during the initial 12 \pm 3-month period: significant progression (FVC decline of $>10\%$, or FVC decline of 5–10% with DL_{CO} decline of $\geq 15\%$); moderate progression (FVC decline of 5–10% with DL_{CO} decline of $<15\%$); stable ILD (FVC decline or improvement of $<5\%$); moderate improvement (FVC improvement of 5–10% with DL_{CO} improvement of $<15\%$); and significant improvement (FVC improvement of $>10\%$, or FVC improvement of 5–10% with DL_{CO} improvement of $\geq 15\%$).

Further changes in lung function were evaluated in patients with available data over a mean follow-up of 5 years, using the definitions of progressive ILD described above.

Results

Among the 826 eligible patients with pulmonary function data over the initial 12 \pm 3-month period, 113 (14%) had significant ILD progression, 106 (13%) had moderate progression, 408 (49%) were stable, 189 (23%) had moderate improvement, and 10 (1%) had significant improvement (Table S1).

In multivariable logistic regression analyses, higher FVC (odds ratio (OR) 1.03; 95% confidence interval (CI) 1.02–1.04), shorter disease duration (OR 0.97; 95% CI 0.97–0.98), higher erythrocyte sedimentation rate (OR 1.02; 95% CI 1.01–1.02), and presence of reflux/dysphagia symptoms (OR 1.71; 95% CI 1.03–2.84; Figure S1B) were predictive for significant progressive ILD at 12 \pm 3 months. Older age, male sex, antibody profile and SSc subtype were not predictive. Further ILD progression over the 5-year follow-up (among patients who had experienced progression during the initial 12 \pm 3-month period)

Revision July 2020

Confidential

EUSTAR SSc-ILD Progression

was predicted by higher FVC (OR 1.02; 95% CI 1.00–1.04) and shorter disease duration (OR 1.00; 95% CI 1.00–1.02; Figure S1D). The only factor significantly predictive for cumulative progression over 5 years was higher baseline FVC (OR 1.01, 95% CI 1.00–1.02, $p=0.01$).

There were no significant differences in mortality rate between patients with significant ILD progression (14/113 [12%]), moderate progression (15/106 [14%]), or stable ILD (36/408 [9%]) after 12±3 months.

Revision July 2020

Confidential

EUSTAR SSc-ILD Progression

SUPPLEMENTARY TABLE S1: Overall baseline demographics and clinical characteristics of all patients with SSc-ILD and those with three serial FVC measurements (who were included in the analyses) or without three serial measurements (who were not included).

	Included (n=826)	Not included (n=1433)	Overall (N=2259)
Age, years (SD)	56 (13.1)	57 (13.4)	57 (13.3)
Male, n (%)	150 (18)	238 (17)	388 (17)
Disease characteristics			
Disease duration, years (SD)	9.7 (8.3)	9.9 (8.3)	9.9 (8.3)
Disease duration <3 years, n (%)	175 (21)	294 (21)	469 (21)
Diffuse cutaneous SSc, n (%)	365 (44)	599 (43)	964 (44)
Limited cutaneous SSc, n (%)	367 (44)	668 (48)	1035 (47)
Anti-topoisomerase I Ab, n (%)	421 (51)	700 (52)	1121 (53)
Anti-centromere Ab, n (%)	141 (17)	237 (18)	378 (18)
Anti-RNA polymerase III Ab, n (SD)	23 (3)	34 (5)	57 (5)
Follow-up period, years, mean (SD)	5.4 (2.0)	1.8 (2.2)	2.5 (2.3)
Lung characteristics			
FVC% predicted, mean (SD)	87 (21.1)	86 (22.0)	86 (21.7)
DL _{co} % predicted, mean (SD)	59 (18.3)	59 (20.3)	59 (19.6)
NYHA class, n (%)			
1	363 (44)	527 (38)	890 (41)
2	317 (38)	578 (42)	895 (41)
3	103 (13)	236 (17)	339 (16)
4	14 (2)	31 (2)	45 (2)
Other characteristics			
mRSS, mean (SD)	10 (8.1)	10 (8.9)	10 (8.6)
Reflux/dysphagia symptoms, n (%)	547 (66)	905 (64)	1452 (65)
Digital ulcers, n (%)	266 (32)	410 (29)	676 (30)
Tendon friction rubs, n (%)	73 (9)	114 (8)	187 (9)
Synovitis, n (%)	117 (14)	224 (16)	341 (15)
Muscle weakness, n (%)	182 (22)	289 (20)	465 (21)
Scleroderma renal crisis, n (%)	11 (1)	24 (2)	90 (2)
ESR, mean (SD)	26 (20.6)	26 (20.5)	26 (20.5)
Elevated CRP, n (%)	217 (26)	417 (31)	634 (30)
Immunosuppressant use, n (%)	89 (11)	220 (15)	309 (14)

Abbreviations: Ab, antibody; CRP, C-reactive protein; DL_{co}, diffusion capacity of the lungs for carbon monoxide; ESR, erythrocyte sedimentation rate; FVC, forced vital capacity; mRSS, modified Rodnan skin score; NYHA, New York Heart Association; SD, standard deviation; SSc, systemic sclerosis; SSc-ILD, systemic sclerosis-associated interstitial lung disease.

Revision July 2020

Confidential

EUSTAR SSc-ILD Progression

SUPPLEMENTARY TABLE S2 Overall baseline demographic and clinical characteristics of patients with SSc-ILD and characteristics stratified by ILD progression (defined by FVC and DL_{CO}) over the 12±3-month observation period

	Total (N=826)	Significant progression (n=113)	Moderate progression (n=106)	Stable (n=408)	Moderate improvement (n=189)
Progression criteria, ΔFVC (ΔDL _{CO})		<-10, or -10 to -5 (≤-15)	-10 to -5 (>-15)	>-5 to <5	5 to 10 (<15)
Age, years (SD)	56 (13.1)	59 (13.4)	55 (12.1)	55 (13.5)	58 (12.1)
Male, n (%)	150 (18)	18 (16)	17 (16)	81 (20)	34 (18.0)
Disease characteristics at baseline					
Disease duration, years (SD)	9.7 (8.3)	9.2 (7.6)	9.6 (8.4)	10.2 (8.3)	9.0 (8.6)
Disease duration <3 years, n (%)	175 (21)	27 (24)	27 (26)	70 (17)	50 (26.5)
Diffuse cutaneous SSc, n (%)	365 (44)	51 (45)	45 (43)	186 (46)	78 (41.3)
Limited cutaneous SSc, n (%)	367 (44)	58 (51)	43 (41)	180 (44)	81 (42.9)
Anti-topoisomerase I Ab, n (%)	421 (51)	48 (43)	55 (54)	222 (54)	93 (49.2)
Anti-centromere Ab, n (%)	141 (17)	19 (17)	20 (19)	60 (15)	40 (21.2)
Anti-RNA polymerase III Ab, n (%)	23 (3)	3 (3)	3 (3)	10 (3)	9.0 (8.6)
Total observation period, years (SD)	5.4 (2.0)	5.5 (2.1)	5.5 (2.1)	5.4 (2.0)	5.0 (26.5)
Lung characteristics					
FVC% predicted, mean (SD)	87 (21.1)	96 (23.1)	89 (21.4)	85 (20.6)	85.1 (19.5)
DL _{CO} % predicted, mean (SD)	59 (18.3)	62 (17.8)	58 (16.5)	58 (19.5)	59.0 (16.8)
ΔFVC% predicted,* mean (SD)	-0.1 (10.2)	-17 (8.0)	-7 (1.4)	0.3 (2.5)	11.0 (7.3)
ΔDL _{CO} % predicted,* mean (SD)	-0.7 (12.2)	-7 (17.2)	1 (10.0)	-0.4 (11.3)	2.4 (1.7)
Pulmonary hypertension, n (%)	162 (20)	21 (25)	16 (15)	6 (21)	30 (16)
NYHA class, n (%)					
1	363 (44)	53 (47)	46 (43)	175 (43)	89 (47)
2	317 (38)	44 (39)	41 (39)	154 (38)	77 (41)
3	103 (13)	12 (11)	14 (13)	52 (13)	24 (13)
4	14 (2)	3 (3)	1 (1)	8 (2)	2 (1)
Other characteristics					
mRSS, mean (SD)	10 (8.1)	11 (8.0)	9 (8.3)	10 (7.6)	9.9 (8.9)

Revision July 2020

Confidential

EUSTAR SSc-ILD Progression

	Total (N=826)	Significant progression (n=113)	Moderate progression (n=106)	Stable (n=408)	Moderate improvement (n=189)
Δ mRSS, mean (SD)*	-0.4 (4.6)	0.5 (4.2)	-0.4 (3.2)	-0.4 (4.6)	-1.2 (5.3)
Reflux/dysphagia symptoms, n (%)	547 (66)	87 (77)	68 (64)	268 (66)	118 (62.4)
Digital ulcers, n (%)	266 (32)	43 (38)	28 (26)	144 (35)	60 (32)
Tendon friction rubs, n (%)	73 (9)	8 (7)	8 (8)	36 (9)	20 (11)
Synovitis, n (%)	117 (14)	18 (16)	13 (12)	62 (15)	23 (12)
Muscle weakness, n (%)	182 (22)	29 (26)	24 (23)	83 (20)	47 (25)
Scleroderma renal crisis, n (%)	11 (1)	4 (4)	3 (3)	6 (2)	1 (0.5)
ESR, mean (SD)	26 (20.6)	29 (23.8)	25 (21.9)	26 (19.0)	25.9 (20.8)
Elevated CRP, n (%)	217 (26)	38 (34)	32 (30)	102 (25)	47 (25)
Immunosuppressant use, n (%)	88 (11)	8 (7)	9 (9)	50 (12)	21 (11)

*Change from baseline to 12 months.

Significant progression (FVC decline of >10%, or FVC decline of 5–10% with DL_{CO} decline of ≥15%); moderate progression (FVC decline of 5–10% with DL_{CO} decline of <15%); stable ILD (FVC decline or improvement of <5%); moderate improvement (FVC improvement of 5–10% with DL_{CO} improvement of <15%).

Abbreviations: Ab, antibody; CRP, C-reactive protein; DL_{CO}, diffusion capacity of the lungs for carbon monoxide; ESR, erythrocyte sedimentation rate; FVC, forced vital capacity; mRSS, modified Rodnan skin score; NYHA, New York Heart Association; SD, standard deviation; SSc, systemic sclerosis; SSc-ILD, systemic sclerosis-associated interstitial lung disease.

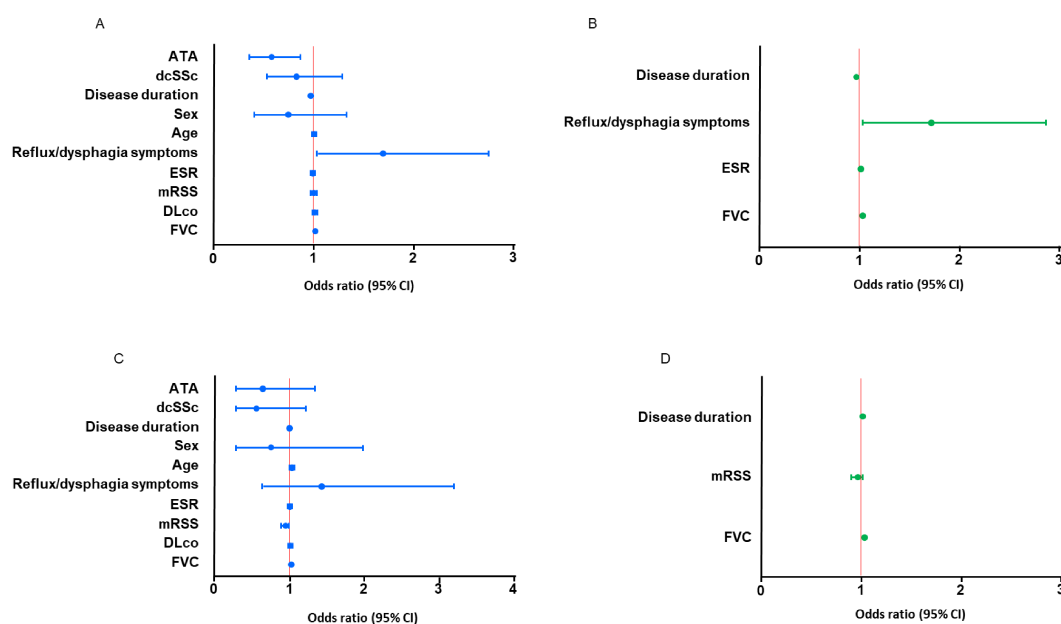
Revision July 2020

Confidential

EUSTAR SSC-ILD Progression

SUPPLEMENTARY FIGURE S1 Variables predictive for progression in patients during the 12±3-month observation period in (A) univariable and (B) multivariable logistic regression; and variables predictive for further progression over the 5-year follow-up in patients with progression during the 12±3-month observation period in (C) univariable and (D) multivariable logistic regression.

Significant progression was defined as FVC decline of >10%, or FVC decline of 5–10% with DL_{CO} decline of ≥15%.



Abbreviations: ATA, anti-topoisomerase A antibody; CI, confidence interval; dcSSc, diffuse cutaneous systemic sclerosis; DL_{CO}, diffusion capacity of the lungs for carbon monoxide; ESR, erythrocyte sedimentation rate; FVC, forced vital capacity; mRSS, modified Rodnan skin score.

Revision July 2020

Confidential

EUSTAR SSC-ILD Progression

Appendix:
List of EUSTAR Collaborators

Marco Matucci Cerinic	Florence (Italy)
Ulrich Walker	Basel (Switzerland)
Florenzo Iannone	Bari (Italy)
Radim Becvar	Prague (Czech Republic)
Gabriele Valentini	Naples (Italy)
Elise Siegert	Berlin (Germany)
C. Montecucco	Pavia (Italy)
Patricia E. Carreira	Madrid (Spain)
Carlo Chizzolini	Geneva (Switzerland)
Eugene J. Kucharz	Katowice (Poland)
Andrea Doria	Padova (Italy)
Pr Dominique Farge Bancel	Paris (France)
Roger Hesselstrand	Lund (Sweden)
Alexandra Balbir-Gurman	Haifa (Israel)
Raffaele Pellerito	Torino (Italy)
Cristian Caimmi	Verona (Italy)
Christopher Denton	London (United Kingdom)
Nemanja Damjanov	Belgrade (Serbia & Montenegro)
Jörg Henes	Tübingen (Germany)
Vera Ortiz-Santamaria	Granollers Barcelona (Spain)
Stefan Heitmann	Stuttgart (Germany)
Maria João Salvador	Coimbra (Portugal)
Bojana Stamenkovic	Niska Banja (Serbia and Montenegro)
Carlo Francesco Selmi	Rozzano, Milano (Italy)
Ariane Herrick	Salford (United Kingdom)
Ulf Müller-Ladner	Bad Nauheim (Germany)
Merete Engelhart	Hellerup (Denmark)
Valeria Riccieri	Roma (Italy)
Ruxandra Maria Ionescu	Bucharest (Romania)
Ana Maria Gheorghiu	Bucharest (Romania)
Cord Sunderkötter	Münster (Germany)
Jörg Distler	Erlangen (Germany)
Francesca Ingegnoli	Milano (Italy)
Luc Mouthon	Paris (France)
Vanessa Smith	Gent (Belgium)
Francesco Paolo Cantatore	Foggia (Italy)
Susanne Ullman	Copenhagen (Denmark)
Maria Rosa Pozzi	Monza (Italy)
Piotr Wiland	Wroclaw (Poland)
Marie Vanthuyne	Brussels (Belgium)
Brigitte Petra Saar	Krummel-Lorenz Frankfurt (Germany)

Revision July 2020

Confidential

EUSTAR SSC-ILD Progression

Kristine Herrmann		Dresden (Germany)
Ellen De Langhe		Leuven (Belgium)
Branimir Marko Miroslav Mayer	Anic Baresic	Zagreb (Croatia)
Sule Yavuz		Altunizade-Istanbul (Turkey)
Carolina de Souza Müller		Curitiba (Brasil)
Thierry Zenone		Valence (France)
Alessandro Alessandra Vacca	Mathieu	Monserrato (CA) (Italy)
Kamal Solanki		Hamilton (New Zealand)
Edoardo Rosato		Roma (Italy)
Fahrettin Figen Yargucu	Oksel	Bornova, Izmir (Turkey)
Cristina-Mihaela Tanaseanu		Bucharest (Romania)
Rosario Foti		Catania (Italy)
Daniel E. Furst		Los Angeles (USA)
Peter Sabine Adler	Villiger	Bern (Switzerland)
Paloma García de la Peña Jorge Juan González Martín	Lefebvre	Madrid (Spain)
Ira Litinsky		Tel-Aviv (Israel)
Francesco Del Galdo		Leeds (United Kingdom)
Goda Seskute		Vilnius (Lithuania)
Lesley Ann Saketkoo		New Orleans (USA)
Eduardo Kerzberg		Buenos Aires (Argentina)
Ivan Castellví		Barcelona (Spain)
François Spertini		Lausanne (Switzerland)
Vivien M. Hsu		New Brunswick (USA)
Thierry Martin		Strasbourg (France)
Tim Schmeiser		Wuppertal-Elberfeld (Germany)
Dominik Majewski		Poznan (Poland)
Vera Bernardino		Lisboa (Portugal)
Piercarlo Sarzi Puttini		Milano (Italy)

Revision July 2020

Confidential

EUSTAR SSc-ILD Progression

Supplementary material

Progressive interstitial lung disease measured by forced vital capacity changes in combination with diffusion capacity of the lungs for carbon monoxide changes over 12-month periods

A decline in forced vital capacity (FVC) of $\geq 10\%$, or a decline in FVC of 5–10% along with a decline in diffusion capacity of the lungs for carbon monoxide (DL_{CO}) of 15%, is a proposed definition of progressive fibrosis in patients with interstitial lung disease (ILD), and is predictive of mortality in patients with systemic sclerosis (SSc)-ILD.[8, 31] We therefore also assessed the prevalence of this combined endpoint.

Materials and methods

Patients were divided into five progressive ILD subgroups based on absolute change in FVC and DL_{CO} (% predicted) during the initial 12 \pm 3-month period: significant progression (FVC decline of $>10\%$, or FVC decline of 5–10% with DL_{CO} decline of $\geq 15\%$); moderate progression (FVC decline of 5–10% with DL_{CO} decline of $<15\%$); stable ILD (FVC decline or improvement of $<5\%$); moderate improvement (FVC improvement of 5–10% with DL_{CO} improvement of $<15\%$); and significant improvement (FVC improvement of $>10\%$, or FVC improvement of 5–10% with DL_{CO} improvement of $\geq 15\%$).

Further changes in lung function were evaluated in patients with available data over a mean follow-up of 5 years, using the definitions of progressive ILD described above.

Results

Among the 826 eligible patients with pulmonary function data over the initial 12 \pm 3-month period, 113 (14%) had significant ILD progression, 106 (13%) had moderate progression, 408 (49%) were stable, 189 (23%) had moderate improvement, and 10 (1%) had significant improvement (Table S1).

In multivariable logistic regression analyses, higher FVC (odds ratio (OR) 1.03; 95% confidence interval (CI) 1.02–1.04), shorter disease duration (OR 0.97; 95% CI 0.97–0.98), higher erythrocyte sedimentation rate (OR 1.02; 95% CI 1.01–1.02), and presence of reflux/dysphagia symptoms (OR 1.71; 95% CI 1.03–2.84; Figure S1B) were predictive for significant progressive ILD at 12 \pm 3 months. Older age, male sex, antibody profile and SSc subtype were not predictive. Further ILD progression over the 5-year follow-up (among patients who had experienced progression during the initial 12 \pm 3-month period)

Revision July 2020

Confidential

EUSTAR SSc-ILD Progression

was predicted by higher FVC (OR 1.02; 95% CI 1.00–1.04) and shorter disease duration (OR 1.00; 95% CI 1.00–1.02; Figure S1D). The only factor significantly predictive for cumulative progression over 5 years was higher baseline FVC (OR 1.01, 95% CI 1.00–1.02, $p=0.01$).

There were no significant differences in mortality rate between patients with significant ILD progression (14/113 [12%]), moderate progression (15/106 [14%]), or stable ILD (36/408 [9%]) after 12±3 months.

Revision July 2020

Confidential

EUSTAR SSc-ILD Progression

SUPPLEMENTARY TABLE S1: Overall baseline demographics and clinical characteristics of all patients with SSc-ILD and those with three serial FVC measurements (who were included in the analyses) or without three serial measurements (who were not included).

	Included (n=826)	Not included (n=1433)	Overall (N=2259)
Age, years (SD)	56 (13.1)	57 (13.4)	57 (13.3)
Male, n (%)	150 (18)	238 (17)	388 (17)
Disease characteristics			
Disease duration, years (SD)	9.7 (8.3)	9.9 (8.3)	9.9 (8.3)
Disease duration <3 years, n (%)	175 (21)	294 (21)	469 (21)
Diffuse cutaneous SSc, n (%)	365 (44)	599 (43)	964 (44)
Limited cutaneous SSc, n (%)	367 (44)	668 (48)	1035 (47)
Anti-topoisomerase I Ab, n (%)	421 (51)	700 (52)	1121 (53)
Anti-centromere Ab, n (%)	141 (17)	237 (18)	378 (18)
Anti-RNA polymerase III Ab, n (SD)	23 (3)	34 (5)	57 (5)
Follow-up period, years, mean (SD)	5.4 (2.0)	1.8 (2.2)	2.5 (2.3)
Lung characteristics			
FVC% predicted, mean (SD)	87 (21.1)	86 (22.0)	86 (21.7)
DL _{co} % predicted, mean (SD)	59 (18.3)	59 (20.3)	59 (19.6)
NYHA class, n (%)			
1	363 (44)	527 (38)	890 (41)
2	317 (38)	578 (42)	895 (41)
3	103 (13)	236 (17)	339 (16)
4	14 (2)	31 (2)	45 (2)
Other characteristics			
mRSS, mean (SD)	10 (8.1)	10 (8.9)	10 (8.6)
Reflux/dysphagia symptoms, n (%)	547 (66)	905 (64)	1452 (65)
Digital ulcers, n (%)	266 (32)	410 (29)	676 (30)
Tendon friction rubs, n (%)	73 (9)	114 (8)	187 (9)
Synovitis, n (%)	117 (14)	224 (16)	341 (15)
Muscle weakness, n (%)	182 (22)	289 (20)	465 (21)
Scleroderma renal crisis, n (%)	11 (1)	24 (2)	90 (2)
ESR, mean (SD)	26 (20.6)	26 (20.5)	26 (20.5)
Elevated CRP, n (%)	217 (26)	417 (31)	634 (30)
Immunosuppressant use, n (%)	89 (11)	220 (15)	309 (14)

Abbreviations: Ab, antibody; CRP, C-reactive protein; DL_{co}, diffusion capacity of the lungs for carbon monoxide; ESR, erythrocyte sedimentation rate; FVC, forced vital capacity; mRSS, modified Rodnan skin score; NYHA, New York Heart Association; SD, standard deviation; SSc, systemic sclerosis; SSc-ILD, systemic sclerosis-associated interstitial lung disease.

Revision July 2020

Confidential

EUSTAR SSc-ILD Progression

SUPPLEMENTARY TABLE S2 Overall baseline demographic and clinical characteristics of patients with SSc-ILD and characteristics stratified by ILD progression (defined by FVC and DL_{CO}) over the 12±3-month observation period

	Total (N=826)	Significant progression (n=113)	Moderate progression (n=106)	Stable (n=408)	Moderate improvement (n=189)
Progression criteria, ΔFVC (ΔDL _{CO})		<-10, or -10 to -5 (≤-15)	-10 to -5 (>-15)	>-5 to <5	5 to 10 (<15)
Age, years (SD)	56 (13.1)	59 (13.4)	55 (12.1)	55 (13.5)	58 (12.1)
Male, n (%)	150 (18)	18 (16)	17 (16)	81 (20)	34 (18.0)
Disease characteristics at baseline					
Disease duration, years (SD)	9.7 (8.3)	9.2 (7.6)	9.6 (8.4)	10.2 (8.3)	9.0 (8.6)
Disease duration <3 years, n (%)	175 (21)	27 (24)	27 (26)	70 (17)	50 (26.5)
Diffuse cutaneous SSc, n (%)	365 (44)	51 (45)	45 (43)	186 (46)	78 (41.3)
Limited cutaneous SSc, n (%)	367 (44)	58 (51)	43 (41)	180 (44)	81 (42.9)
Anti-topoisomerase I Ab, n (%)	421 (51)	48 (43)	55 (54)	222 (54)	93 (49.2)
Anti-centromere Ab, n (%)	141 (17)	19 (17)	20 (19)	60 (15)	40 (21.2)
Anti-RNA polymerase III Ab, n (%)	23 (3)	3 (3)	3 (3)	10 (3)	9.0 (8.6)
Total observation period, years (SD)	5.4 (2.0)	5.5 (2.1)	5.5 (2.1)	5.4 (2.0)	5.0 (26.5)
Lung characteristics					
FVC% predicted, mean (SD)	87 (21.1)	96 (23.1)	89 (21.4)	85 (20.6)	85.1 (19.5)
DL _{CO} % predicted, mean (SD)	59 (18.3)	62 (17.8)	58 (16.5)	58 (19.5)	59.0 (16.8)
ΔFVC% predicted,* mean (SD)	-0.1 (10.2)	-17 (8.0)	-7 (1.4)	0.3 (2.5)	11.0 (7.3)
ΔDL _{CO} % predicted,* mean (SD)	-0.7 (12.2)	-7 (17.2)	1 (10.0)	-0.4 (11.3)	2.4 (1.7)
Pulmonary hypertension, n (%)	162 (20)	21 (25)	16 (15)	6 (21)	30 (16)
NYHA class, n (%)					
1	363 (44)	53 (47)	46 (43)	175 (43)	89 (47)
2	317 (38)	44 (39)	41 (39)	154 (38)	77 (41)
3	103 (13)	12 (11)	14 (13)	52 (13)	24 (13)
4	14 (2)	3 (3)	1 (1)	8 (2)	2 (1)
Other characteristics					
mRSS, mean (SD)	10 (8.1)	11 (8.0)	9 (8.3)	10 (7.6)	9.9 (8.9)

Revision July 2020

Confidential

EUSTAR SSc-ILD Progression

	Total (N=826)	Significant progression (n=113)	Moderate progression (n=106)	Stable (n=408)	Moderate improvement (n=189)
Δ mRSS, mean (SD)*	-0.4 (4.6)	0.5 (4.2)	-0.4 (3.2)	-0.4 (4.6)	-1.2 (5.3)
Reflux/dysphagia symptoms, n (%)	547 (66)	87 (77)	68 (64)	268 (66)	118 (62.4)
Digital ulcers, n (%)	266 (32)	43 (38)	28 (26)	144 (35)	60 (32)
Tendon friction rubs, n (%)	73 (9)	8 (7)	8 (8)	36 (9)	20 (11)
Synovitis, n (%)	117 (14)	18 (16)	13 (12)	62 (15)	23 (12)
Muscle weakness, n (%)	182 (22)	29 (26)	24 (23)	83 (20)	47 (25)
Scleroderma renal crisis, n (%)	11 (1)	4 (4)	3 (3)	6 (2)	1 (0.5)
ESR, mean (SD)	26 (20.6)	29 (23.8)	25 (21.9)	26 (19.0)	25.9 (20.8)
Elevated CRP, n (%)	217 (26)	38 (34)	32 (30)	102 (25)	47 (25)
Immunosuppressant use, n (%)	88 (11)	8 (7)	9 (9)	50 (12)	21 (11)

*Change from baseline to 12 months.

Significant progression (FVC decline of >10%, or FVC decline of 5–10% with DL_{CO} decline of ≥15%); moderate progression (FVC decline of 5–10% with DL_{CO} decline of <15%); stable ILD (FVC decline or improvement of <5%); moderate improvement (FVC improvement of 5–10% with DL_{CO} improvement of <15%).

Abbreviations: Ab, antibody; CRP, C-reactive protein; DL_{CO}, diffusion capacity of the lungs for carbon monoxide; ESR, erythrocyte sedimentation rate; FVC, forced vital capacity; mRSS, modified Rodnan skin score; NYHA, New York Heart Association; SD, standard deviation; SSc, systemic sclerosis; SSc-ILD, systemic sclerosis-associated interstitial lung disease.

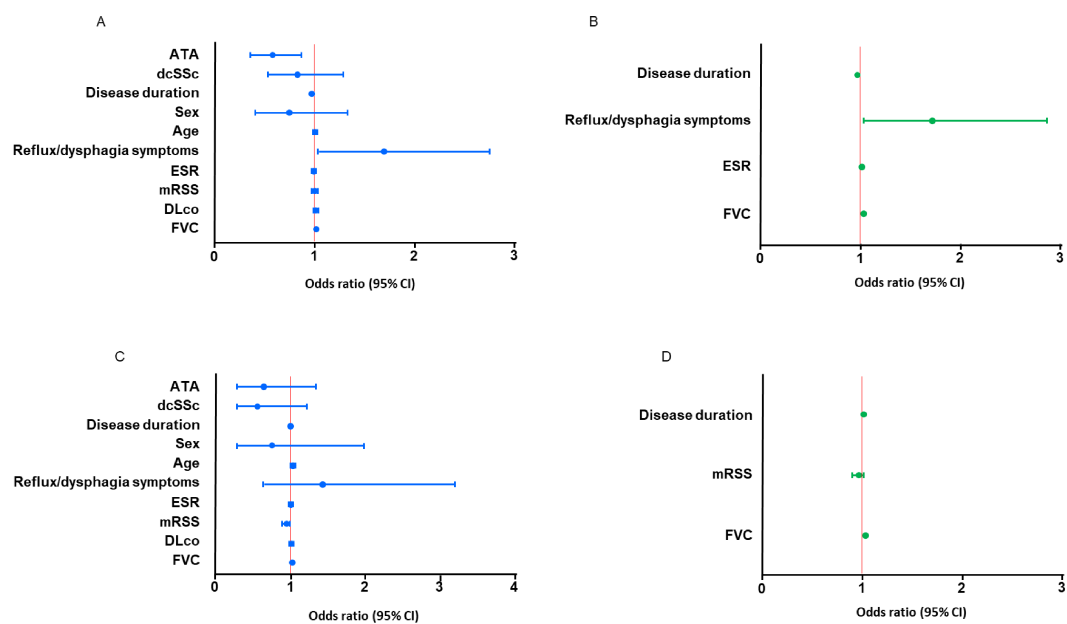
Revision July 2020

Confidential

EUSTAR SSC-ILD Progression

SUPPLEMENTARY FIGURE S1 Variables predictive for progression in patients during the 12±3-month observation period in (A) univariable and (B) multivariable logistic regression; and variables predictive for further progression over the 5-year follow-up in patients with progression during the 12±3-month observation period in (C) univariable and (D) multivariable logistic regression.

Significant progression was defined as FVC decline of >10%, or FVC decline of 5–10% with DL_{CO} decline of ≥15%.



Abbreviations: ATA, anti-topoisomerase A antibody; CI, confidence interval; dcSSc, diffuse cutaneous systemic sclerosis; DL_{CO}, diffusion capacity of the lungs for carbon monoxide; ESR, erythrocyte sedimentation rate; FVC, forced vital capacity; mRSS, modified Rodnan skin score.

Revision July 2020

Confidential

EUSTAR SSC-ILD Progression

Appendix:
List of EUSTAR Collaborators

Marco Matucci Cerinic	Florence (Italy)
Ulrich Walker	Basel (Switzerland)
Florenzo Iannone	Bari (Italy)
Radim Becvar	Prague (Czech Republic)
Gabriele Valentini	Naples (Italy)
Elise Siegert	Berlin (Germany)
C. Montecucco	Pavia (Italy)
Patricia E. Carreira	Madrid (Spain)
Carlo Chizzolini	Geneva (Switzerland)
Eugene J. Kucharz	Katowice (Poland)
Andrea Doria	Padova (Italy)
Pr Dominique Farge Bancel	Paris (France)
Roger Hesselstrand	Lund (Sweden)
Alexandra Balbir-Gurman	Haifa (Israel)
Raffaele Pellerito	Torino (Italy)
Cristian Caimmi	Verona (Italy)
Christopher Denton	London (United Kingdom)
Nemanja Damjanov	Belgrade (Serbia & Montenegro)
Jörg Henes	Tübingen (Germany)
Vera Ortiz-Santamaria	Granollers Barcelona (Spain)
Stefan Heitmann	Stuttgart (Germany)
Maria João Salvador	Coimbra (Portugal)
Bojana Stamenkovic	Niska Banja (Serbia and Montenegro)
Carlo Francesco Selmi	Rozzano, Milano (Italy)
Ariane Herrick	Salford (United Kingdom)
Ulf Müller-Ladner	Bad Nauheim (Germany)
Merete Engelhart	Hellerup (Denmark)
Valeria Riccieri	Roma (Italy)
Ruxandra Maria Ionescu	Bucharest (Romania)
Ana Maria Gheorghiu	Bucharest (Romania)
Cord Sunderkötter	Münster (Germany)
Jörg Distler	Erlangen (Germany)
Francesca Ingegnoli	Milano (Italy)
Luc Mouthon	Paris (France)
Vanessa Smith	Gent (Belgium)
Francesco Paolo Cantatore	Foggia (Italy)
Susanne Ullman	Copenhagen (Denmark)
Maria Rosa Pozzi	Monza (Italy)
Piotr Wiland	Wroclaw (Poland)
Marie Vanthuyne	Brussels (Belgium)
Brigitte Petra Saar	Krummel-Lorenz Frankfurt (Germany)

Revision July 2020

Confidential

EUSTAR SSC-ILD Progression

Kristine Herrmann		Dresden (Germany)
Ellen De Langhe		Leuven (Belgium)
Branimir Marko Miroslav Mayer	Anic Baresic	Zagreb (Croatia)
Sule Yavuz		Altunizade-Istanbul (Turkey)
Carolina de Souza Müller		Curitiba (Brasil)
Thierry Zenone		Valence (France)
Alessandro Alessandra Vacca	Mathieu	Monserrato (CA) (Italy)
Kamal Solanki		Hamilton (New Zealand)
Edoardo Rosato		Roma (Italy)
Fahrettin Figen Yargucu	Oksel	Bornova, Izmir (Turkey)
Cristina-Mihaela Tanaseanu		Bucharest (Romania)
Rosario Foti		Catania (Italy)
Daniel E. Furst		Los Angeles (USA)
Peter Sabine Adler	Villiger	Bern (Switzerland)
Paloma García de la Peña Jorge Juan González Martín	Lefebvre	Madrid (Spain)
Ira Litinsky		Tel-Aviv (Israel)
Francesco Del Galdo		Leeds (United Kingdom)
Goda Seskute		Vilnius (Lithuania)
Lesley Ann Saketkoo		New Orleans (USA)
Eduardo Kerzberg		Buenos Aires (Argentina)
Ivan Castellví		Barcelona (Spain)
François Spertini		Lausanne (Switzerland)
Vivien M. Hsu		New Brunswick (USA)
Thierry Martin		Strasbourg (France)
Tim Schmeiser		Wuppertal-Elberfeld (Germany)
Dominik Majewski		Poznan (Poland)
Vera Bernardino		Lisboa (Portugal)
Piercarlo Sarzi Puttini		Milano (Italy)

Revision July 2020

Confidential

EUSTAR SSc-ILD Progression

Supplementary material

Progressive interstitial lung disease measured by forced vital capacity changes in combination with diffusion capacity of the lungs for carbon monoxide changes over 12-month periods

A decline in forced vital capacity (FVC) of $\geq 10\%$, or a decline in FVC of 5–10% along with a decline in diffusion capacity of the lungs for carbon monoxide (DL_{CO}) of 15%, is a proposed definition of progressive fibrosis in patients with interstitial lung disease (ILD), and is predictive of mortality in patients with systemic sclerosis (SSc)-ILD.[8, 31] We therefore also assessed the prevalence of this combined endpoint.

Materials and methods

Patients were divided into five progressive ILD subgroups based on absolute change in FVC and DL_{CO} (% predicted) during the initial 12 \pm 3-month period: significant progression (FVC decline of $>10\%$, or FVC decline of 5–10% with DL_{CO} decline of $\geq 15\%$); moderate progression (FVC decline of 5–10% with DL_{CO} decline of $<15\%$); stable ILD (FVC decline or improvement of $<5\%$); moderate improvement (FVC improvement of 5–10% with DL_{CO} improvement of $<15\%$); and significant improvement (FVC improvement of $>10\%$, or FVC improvement of 5–10% with DL_{CO} improvement of $\geq 15\%$).

Further changes in lung function were evaluated in patients with available data over a mean follow-up of 5 years, using the definitions of progressive ILD described above.

Results

Among the 826 eligible patients with pulmonary function data over the initial 12 \pm 3-month period, 113 (14%) had significant ILD progression, 106 (13%) had moderate progression, 408 (49%) were stable, 189 (23%) had moderate improvement, and 10 (1%) had significant improvement (Table S1).

In multivariable logistic regression analyses, higher FVC (odds ratio (OR) 1.03; 95% confidence interval (CI) 1.02–1.04), shorter disease duration (OR 0.97; 95% CI 0.97–0.98), higher erythrocyte sedimentation rate (OR 1.02; 95% CI 1.01–1.02), and presence of reflux/dysphagia symptoms (OR 1.71; 95% CI 1.03–2.84; Figure S1B) were predictive for significant progressive ILD at 12 \pm 3 months. Older age, male sex, antibody profile and SSc subtype were not predictive. Further ILD progression over the 5-year follow-up (among patients who had experienced progression during the initial 12 \pm 3-month period)

Revision July 2020

Confidential

EUSTAR SSc-ILD Progression

was predicted by higher FVC (OR 1.02; 95% CI 1.00–1.04) and shorter disease duration (OR 1.00; 95% CI 1.00–1.02; Figure S1D). The only factor significantly predictive for cumulative progression over 5 years was higher baseline FVC (OR 1.01, 95% CI 1.00–1.02, $p=0.01$).

There were no significant differences in mortality rate between patients with significant ILD progression (14/113 [12%]), moderate progression (15/106 [14%]), or stable ILD (36/408 [9%]) after 12±3 months.

Revision July 2020

Confidential

EUSTAR SSc-ILD Progression

SUPPLEMENTARY TABLE S1: Overall baseline demographics and clinical characteristics of all patients with SSc-ILD and those with three serial FVC measurements (who were included in the analyses) or without three serial measurements (who were not included).

	Included (n=826)	Not included (n=1433)	Overall (N=2259)
Age, years (SD)	56 (13.1)	57 (13.4)	57 (13.3)
Male, n (%)	150 (18)	238 (17)	388 (17)
Disease characteristics			
Disease duration, years (SD)	9.7 (8.3)	9.9 (8.3)	9.9 (8.3)
Disease duration <3 years, n (%)	175 (21)	294 (21)	469 (21)
Diffuse cutaneous SSc, n (%)	365 (44)	599 (43)	964 (44)
Limited cutaneous SSc, n (%)	367 (44)	668 (48)	1035 (47)
Anti-topoisomerase I Ab, n (%)	421 (51)	700 (52)	1121 (53)
Anti-centromere Ab, n (%)	141 (17)	237 (18)	378 (18)
Anti-RNA polymerase III Ab, n (SD)	23 (3)	34 (5)	57 (5)
Follow-up period, years, mean (SD)	5.4 (2.0)	1.8 (2.2)	2.5 (2.3)
Lung characteristics			
FVC% predicted, mean (SD)	87 (21.1)	86 (22.0)	86 (21.7)
DL _{co} % predicted, mean (SD)	59 (18.3)	59 (20.3)	59 (19.6)
NYHA class, n (%)			
1	363 (44)	527 (38)	890 (41)
2	317 (38)	578 (42)	895 (41)
3	103 (13)	236 (17)	339 (16)
4	14 (2)	31 (2)	45 (2)
Other characteristics			
mRSS, mean (SD)	10 (8.1)	10 (8.9)	10 (8.6)
Reflux/dysphagia symptoms, n (%)	547 (66)	905 (64)	1452 (65)
Digital ulcers, n (%)	266 (32)	410 (29)	676 (30)
Tendon friction rubs, n (%)	73 (9)	114 (8)	187 (9)
Synovitis, n (%)	117 (14)	224 (16)	341 (15)
Muscle weakness, n (%)	182 (22)	289 (20)	465 (21)
Scleroderma renal crisis, n (%)	11 (1)	24 (2)	90 (2)
ESR, mean (SD)	26 (20.6)	26 (20.5)	26 (20.5)
Elevated CRP, n (%)	217 (26)	417 (31)	634 (30)
Immunosuppressant use, n (%)	89 (11)	220 (15)	309 (14)

Abbreviations: Ab, antibody; CRP, C-reactive protein; DL_{co}, diffusion capacity of the lungs for carbon monoxide; ESR, erythrocyte sedimentation rate; FVC, forced vital capacity; mRSS, modified Rodnan skin score; NYHA, New York Heart Association; SD, standard deviation; SSc, systemic sclerosis; SSc-ILD, systemic sclerosis-associated interstitial lung disease.

Revision July 2020

Confidential

EUSTAR SSc-ILD Progression

SUPPLEMENTARY TABLE S2 Overall baseline demographic and clinical characteristics of patients with SSc-ILD and characteristics stratified by ILD progression (defined by FVC and DL_{CO}) over the 12±3-month observation period

	Total (N=826)	Significant progression (n=113)	Moderate progression (n=106)	Stable (n=408)	Moderate improvement (n=189)
Progression criteria, ΔFVC (ΔDL _{CO})		<-10, or -10 to -5 (≤-15)	-10 to -5 (>-15)	>-5 to <5	5 to 10 (<15)
Age, years (SD)	56 (13.1)	59 (13.4)	55 (12.1)	55 (13.5)	58 (12.1)
Male, n (%)	150 (18)	18 (16)	17 (16)	81 (20)	34 (18.0)
Disease characteristics at baseline					
Disease duration, years (SD)	9.7 (8.3)	9.2 (7.6)	9.6 (8.4)	10.2 (8.3)	9.0 (8.6)
Disease duration <3 years, n (%)	175 (21)	27 (24)	27 (26)	70 (17)	50 (26.5)
Diffuse cutaneous SSc, n (%)	365 (44)	51 (45)	45 (43)	186 (46)	78 (41.3)
Limited cutaneous SSc, n (%)	367 (44)	58 (51)	43 (41)	180 (44)	81 (42.9)
Anti-topoisomerase I Ab, n (%)	421 (51)	48 (43)	55 (54)	222 (54)	93 (49.2)
Anti-centromere Ab, n (%)	141 (17)	19 (17)	20 (19)	60 (15)	40 (21.2)
Anti-RNA polymerase III Ab, n (%)	23 (3)	3 (3)	3 (3)	10 (3)	9.0 (8.6)
Total observation period, years (SD)	5.4 (2.0)	5.5 (2.1)	5.5 (2.1)	5.4 (2.0)	5.0 (26.5)
Lung characteristics					
FVC% predicted, mean (SD)	87 (21.1)	96 (23.1)	89 (21.4)	85 (20.6)	85.1 (19.5)
DL _{CO} % predicted, mean (SD)	59 (18.3)	62 (17.8)	58 (16.5)	58 (19.5)	59.0 (16.8)
ΔFVC% predicted,* mean (SD)	-0.1 (10.2)	-17 (8.0)	-7 (1.4)	0.3 (2.5)	11.0 (7.3)
ΔDL _{CO} % predicted,* mean (SD)	-0.7 (12.2)	-7 (17.2)	1 (10.0)	-0.4 (11.3)	2.4 (1.7)
Pulmonary hypertension, n (%)	162 (20)	21 (25)	16 (15)	6 (21)	30 (16)
NYHA class, n (%)					
1	363 (44)	53 (47)	46 (43)	175 (43)	89 (47)
2	317 (38)	44 (39)	41 (39)	154 (38)	77 (41)
3	103 (13)	12 (11)	14 (13)	52 (13)	24 (13)
4	14 (2)	3 (3)	1 (1)	8 (2)	2 (1)
Other characteristics					
mRSS, mean (SD)	10 (8.1)	11 (8.0)	9 (8.3)	10 (7.6)	9.9 (8.9)

Revision July 2020

Confidential

EUSTAR SSc-ILD Progression

	Total (N=826)	Significant progression (n=113)	Moderate progression (n=106)	Stable (n=408)	Moderate improvement (n=189)
Δ mRSS, mean (SD)*	-0.4 (4.6)	0.5 (4.2)	-0.4 (3.2)	-0.4 (4.6)	-1.2 (5.3)
Reflux/dysphagia symptoms, n (%)	547 (66)	87 (77)	68 (64)	268 (66)	118 (62.4)
Digital ulcers, n (%)	266 (32)	43 (38)	28 (26)	144 (35)	60 (32)
Tendon friction rubs, n (%)	73 (9)	8 (7)	8 (8)	36 (9)	20 (11)
Synovitis, n (%)	117 (14)	18 (16)	13 (12)	62 (15)	23 (12)
Muscle weakness, n (%)	182 (22)	29 (26)	24 (23)	83 (20)	47 (25)
Scleroderma renal crisis, n (%)	11 (1)	4 (4)	3 (3)	6 (2)	1 (0.5)
ESR, mean (SD)	26 (20.6)	29 (23.8)	25 (21.9)	26 (19.0)	25.9 (20.8)
Elevated CRP, n (%)	217 (26)	38 (34)	32 (30)	102 (25)	47 (25)
Immunosuppressant use, n (%)	88 (11)	8 (7)	9 (9)	50 (12)	21 (11)

*Change from baseline to 12 months.

Significant progression (FVC decline of >10%, or FVC decline of 5–10% with DL_{CO} decline of ≥15%); moderate progression (FVC decline of 5–10% with DL_{CO} decline of <15%); stable ILD (FVC decline or improvement of <5%); moderate improvement (FVC improvement of 5–10% with DL_{CO} improvement of <15%).

Abbreviations: Ab, antibody; CRP, C-reactive protein; DL_{CO}, diffusion capacity of the lungs for carbon monoxide; ESR, erythrocyte sedimentation rate; FVC, forced vital capacity; mRSS, modified Rodnan skin score; NYHA, New York Heart Association; SD, standard deviation; SSc, systemic sclerosis; SSc-ILD, systemic sclerosis-associated interstitial lung disease.

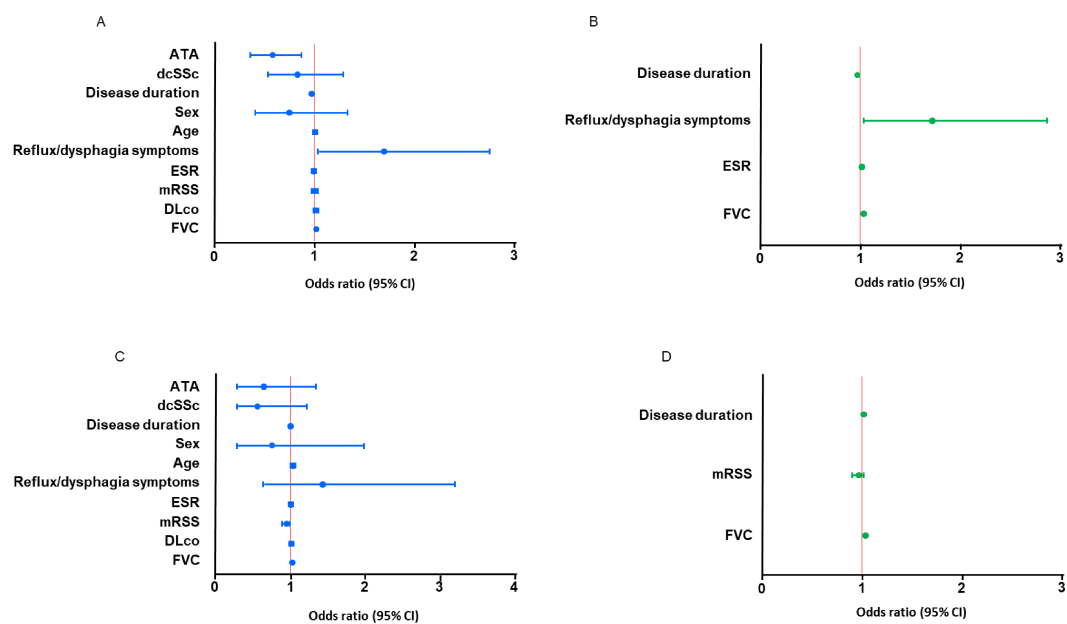
Revision July 2020

Confidential

EUSTAR SSC-ILD Progression

SUPPLEMENTARY FIGURE S1 Variables predictive for progression in patients during the 12±3-month observation period in (A) univariable and (B) multivariable logistic regression; and variables predictive for further progression over the 5-year follow-up in patients with progression during the 12±3-month observation period in (C) univariable and (D) multivariable logistic regression.

Significant progression was defined as FVC decline of >10%, or FVC decline of 5–10% with DL_{CO} decline of ≥15%.



Abbreviations: ATA, anti-topoisomerase A antibody; CI, confidence interval; dcSSc, diffuse cutaneous systemic sclerosis; DL_{CO}, diffusion capacity of the lungs for carbon monoxide; ESR, erythrocyte sedimentation rate; FVC, forced vital capacity; mRSS, modified Rodnan skin score.

Revision July 2020

Confidential

EUSTAR SSC-ILD Progression

Appendix:
List of EUSTAR Collaborators

Marco Matucci Cerinic	Florence (Italy)
Ulrich Walker	Basel (Switzerland)
Florenzo Iannone	Bari (Italy)
Radim Becvar	Prague (Czech Republic)
Gabriele Valentini	Naples (Italy)
Elise Siebert	Berlin (Germany)
C. Montecucco	Pavia (Italy)
Patricia E. Carreira	Madrid (Spain)
Carlo Chizzolini	Geneva (Switzerland)
Eugene J. Kucharz	Katowice (Poland)
Andrea Doria	Padova (Italy)
Pr Dominique Farge Bancel	Paris (France)
Roger Hesselstrand	Lund (Sweden)
Alexandra Balbir-Gurman	Haifa (Israel)
Raffaele Pellerito	Torino (Italy)
Cristian Caimmi	Verona (Italy)
Christopher Denton	London (United Kingdom)
Nemanja Damjanov	Belgrade (Serbia & Montenegro)
Jörg Henes	Tübingen (Germany)
Vera Ortiz-Santamaria	Granollers Barcelona (Spain)
Stefan Heitmann	Stuttgart (Germany)
Maria João Salvador	Coimbra (Portugal)
Bojana Stamenkovic	Niska Banja (Serbia and Montenegro)
Carlo Francesco Selmi	Rozzano, Milano (Italy)
Ariane Herrick	Salford (United Kingdom)
Ulf Müller-Ladner	Bad Nauheim (Germany)
Merete Engelhart	Hellerup (Denmark)
Valeria Riccieri	Roma (Italy)
Ruxandra Maria Ionescu	Bucharest (Romania)
Ana Maria Gheorghiu	Bucharest (Romania)
Cord Sunderkötter	Münster (Germany)
Jörg Distler	Erlangen (Germany)
Francesca Ingegnoli	Milano (Italy)
Luc Mouthon	Paris (France)
Vanessa Smith	Gent (Belgium)
Francesco Paolo Cantatore	Foggia (Italy)
Susanne Ullman	Copenhagen (Denmark)
Maria Rosa Pozzi	Monza (Italy)
Piotr Wiland	Wroclaw (Poland)
Marie Vanthuyne	Brussels (Belgium)
Brigitte Petra Saar	Krummel-Lorenz Frankfurt (Germany)

Revision July 2020

Confidential

EUSTAR SSC-ILD Progression

Kristine Herrmann		Dresden (Germany)
Ellen De Langhe		Leuven (Belgium)
Branimir Marko Miroslav Mayer	Anic Baresic	Zagreb (Croatia)
Sule Yavuz		Altunizade-Istanbul (Turkey)
Carolina de Souza Müller		Curitiba (Brasil)
Thierry Zenone		Valence (France)
Alessandro Alessandra Vacca	Mathieu	Monserrato (CA) (Italy)
Kamal Solanki		Hamilton (New Zealand)
Edoardo Rosato		Roma (Italy)
Fahrettin Figen Yargucu	Oksel	Bornova, Izmir (Turkey)
Cristina-Mihaela Tanaseanu		Bucharest (Romania)
Rosario Foti		Catania (Italy)
Daniel E. Furst		Los Angeles (USA)
Peter Sabine Adler	Villiger	Bern (Switzerland)
Paloma García de la Peña Jorge Juan González Martín	Lefebvre	Madrid (Spain)
Ira Litinsky		Tel-Aviv (Israel)
Francesco Del Galdo		Leeds (United Kingdom)
Goda Seskute		Vilnius (Lithuania)
Lesley Ann Saketkoo		New Orleans (USA)
Eduardo Kerzberg		Buenos Aires (Argentina)
Ivan Castellví		Barcelona (Spain)
François Spertini		Lausanne (Switzerland)
Vivien M. Hsu		New Brunswick (USA)
Thierry Martin		Strasbourg (France)
Tim Schmeiser		Wuppertal-Elberfeld (Germany)
Dominik Majewski		Poznan (Poland)
Vera Bernardino		Lisboa (Portugal)
Piercarlo Sarzi Puttini		Milano (Italy)