



## Accepted Article

**Title:** *Teucrium fruticans* L., a multi-scale study: from trichomes to essential oil

**Authors:** Claudia Giuliani, Martina Bottoni, Laura Santagostini, Alberto Spada, Alessio Papini, Fabrizia Milani, and Gelsomina Fico

This manuscript has been accepted after peer review and appears as an Accepted Article online prior to editing, proofing, and formal publication of the final Version of Record (VoR). The VoR will be published online in Early View as soon as possible and may be different to this Accepted Article as a result of editing. Readers should obtain the VoR from the journal website shown below when it is published to ensure accuracy of information. The authors are responsible for the content of this Accepted Article.

**To be cited as:** *Chem. Biodiversity* **2023**, e202200913

**Link to VoR:** <https://doi.org/10.1002/cbdv.202200913>

# *Teucrium fruticans* L., a multi-scale study: from trichomes to essential oil

Claudia Giuliani<sup>a,b,°</sup>, Martina Bottoni<sup>a,b,°</sup>, Laura Santagostini<sup>\*,c</sup>, Alberto Spada<sup>d</sup>, Alessio Papini<sup>e</sup>, Fabrizia Milani<sup>a,b</sup>, Gelsomina Fico<sup>a,b</sup>

<sup>a</sup> Department of Pharmaceutical Sciences, University of Milan, Via Mangiagalli 25, 20133 Milan, Italy;

<sup>b</sup> Ghirardi Botanic Garden, Department of Pharmaceutical Sciences, University of Milan, Via Religione 25, 25088 Toscolano Maderno, Brescia, Italy;

<sup>c</sup> Department of Chemistry, University of Milan, Via Golgi 19, 20133 Milan, Italy; [laura.santagostini@unimi.it](mailto:laura.santagostini@unimi.it)

<sup>d</sup> Department of Agricultural and Environmental Sciences - Production, Landscape, Agroenergy, University of Milan, via Celoria 2, 20133 Milan, Italy;

<sup>e</sup> Department of Biology, University of Florence, Via La Pira 4, 50121 Florence, Italy.

<sup>°</sup> These authors have contributed equally to this work

**Abstract:** This work represents the first multi-scale study on *Teucrium fruticans* L. cultivated at the Ghirardi Botanic Garden (Lombardy, Northern Italy), combining a micromorphological and a phytochemical survey on the plant's aerial parts. Micromorphological investigations, performed by Light Microscopy, Fluorescence Microscopy and Scanning Electron Microscopy, highlighted the presence of five trichomes morphotypes, distinguished by a different distribution pattern: peltates, short-stalked and ball-like medium-stalked capitate, ubiquitous on the whole plant, medium-stalked and long-stalked capitate, exclusive to the floral whorls. Both peltates and medium-stalked capitate were recognized as the main terpene production sites. Phytochemical characterization focused on the essential oils (EOs), obtained by Clevenger-type hydrodistillation in February and April 2022 and characterized by Gas Chromatography-Mass Spectrometry (GC-MS), which resulted mainly formed by sesquiterpene hydrocarbons. The February EO profile was characterized by  $\beta$ -caryophyllene (28.30%) and germacrene D (19.16%) as main compounds, while in April  $\beta$ -myrcene was detected at high percentage (13.77%), in addition to the previous two components (15.72% and 11.55%, respectively). Literature data, dealing with the biological activities of the main oil constituents, highlighted an anti-microbial, anti-inflammatory, and anti-tumor potential, due to the high content in sesquiterpenes and, particularly, of  $\beta$ -caryophyllene and germacrene D.

**Keywords:** Micromorphology, histochemistry, phytochemistry, hydrodistillation, sesquiterpenes

## Introduction

*Teucrium fruticans* L. (Lamiaceae, sect. *Teucrium* Benth.)<sup>[1]</sup> is a perennial shrub mostly widespread in the Mediterranean region, with a western distribution and habitat preferences in rocky slopes, escarpments, fields and coastline calcareous rocks<sup>[2,3]</sup>. The plant shows erect ascending and quadrangular stems, which can reach up to 120 cm high; lanceolate-ovate leaves, with entire margins, grey-tomentose in the lower lamina, hairless and dark green in the upper side, with opposite insertion on the stem; blue-violet flowers assembled in terminal clusters in summer<sup>[4]</sup>.

*Teucrium* derives from the mythological Teucer, a son of the king of Salamis, who was the first to take advantages of the medicinal properties of these plants<sup>[1]</sup>. In Italy, the traditional uses of *T. fruticans* still survive. In Tuscany, depurative and diuretic effects are ascribed to

the leaf infusions<sup>[3,5]</sup>, while in Sicily, where the plant is commonly known as "erba ricottara", the direct application of the leaves is a useful remedy in case of haemorrhoids<sup>[2]</sup>.

Micromorphological investigations were developed for several members of the genus *Teucrium*<sup>[6-10]</sup> mainly from the Mediterranean region<sup>[6,8,9,10,11,13,14]</sup>, Iran<sup>[12]</sup>, and South Africa<sup>[7]</sup>, but no studies about the secreting structures of *T. fruticans* were reported. Previous Italian, Turkish, and Iranian works<sup>[11,12,14]</sup> highlighted the importance of the *indumentum* features on different plant parts as distinctive taxonomic characters at section level or for species classification<sup>[11,12]</sup>. Other morphological surveys were focused on the link of trichome morphotypes, distribution pattern, and mechanism of secretion release with phytochemical data: *T. chamaedrys* from Italy<sup>[6]</sup>, *T. polium* from Greece<sup>[8]</sup>, *T. capitatum* and *T. salviastrum* from Portugal<sup>[9,10]</sup>, and three endemic South African species<sup>[7]</sup> in which this type of

## Chem. Biodiversity

investigation was linked to the local ethnopharmacognostic importance of the *taxa*<sup>[7]</sup>. Concerning the histochemical information, no contributions on *T. fruticans* were found, whereas only two works reported evidence about the chemical nature of the secretory products of different trichomes types of the Italian *T. chamaedrys*<sup>[6,13]</sup>. In addition, two works reported a generic evaluation of the lipophilic secretion of the Portuguese *T. capitatum* and *T. salviastrum*<sup>[9,10]</sup>.

As it pertains to the phytochemical data, a recent review offered an overview of the chemical composition and biological activities of the essential oils (EOs) isolated from several *Teucrium* species from all over the world<sup>[1]</sup>. Regarding the Italian territory, a survey analysed the chemical composition and the quali-quantitative variability of the essential oil of three Sicilian congeneric species<sup>[15]</sup>, whereas only two works focused on the EO characterization of *T. fruticans* aerial parts, with samples coming from Tuscany, Sicily, and Malta, respectively<sup>[3,16]</sup>. Moreover, the total phenol content of the EtOH/H<sub>2</sub>O extracts of *T. fruticans* inflorescences from Sicily was investigated, together with its *in vitro* antioxidant and antimicrobial activities against pathogenic bacteria<sup>[5]</sup>.

The antioxidant, antimicrobial, antitumor, anti-inflammatory, and antinociceptive activities, together with the bacterial antimutagenic potentiality and the inhibition capacity on the acetylcholinesterase enzyme, are reported for the EO of *Teucrium* species<sup>[1]</sup>, but no particular evidence emerged referring to *T. fruticans* oil derivatives. Finally, many species of the genus have been proved to have antioxidant, antimicrobial, and antifungal activities potentially useful in preservative processes<sup>[5]</sup>, as well as antiphytoviral, insecticidal, and antiprotozoal activity, with a final view to using EOs as valid and eco-friendly alternatives to traditional chemical insecticides and pesticides<sup>[1]</sup>.

Considering this, in this work we proposed for the first time a combined survey on the micromorphology and phytochemistry of *T. fruticans* cultivated in Northern Italy (Ghirardi Botanic Garden, University of Milan, Toscolano Maderno, BS, Lombardy – Northern Italy). This study is part of a wider project entitled “Botanic Garden, factory of molecules...work in progress” (Lombardy Region Call for the Enhancement of Museums Lr. 19/2016, year 2021) and is intended to: 1) investigate the micromorphological features of the vegetative and reproductive organs by means of Light Microscopy, Fluorescence Microscopy, and Scanning Electron Microscopy, with the aim to outline the glandular and non-glandular trichome morphotypes and their distribution pattern; 2) present an in-depth histochemical investigation useful to identify the main lipophilic and hydrophilic compound classes; 3) characterize the chemical composition of the EOs from the

plant aerial parts; 4) correlate the EO profile to the potential biological activity ascribed to the dominant compounds by the literature.

## Results

### Micromorphological survey

#### Trichome morphotypes

The glandular *indumenta* of the vegetative and reproductive organs consisted of peltate and capitate trichomes (**Figure 1 a-h**).

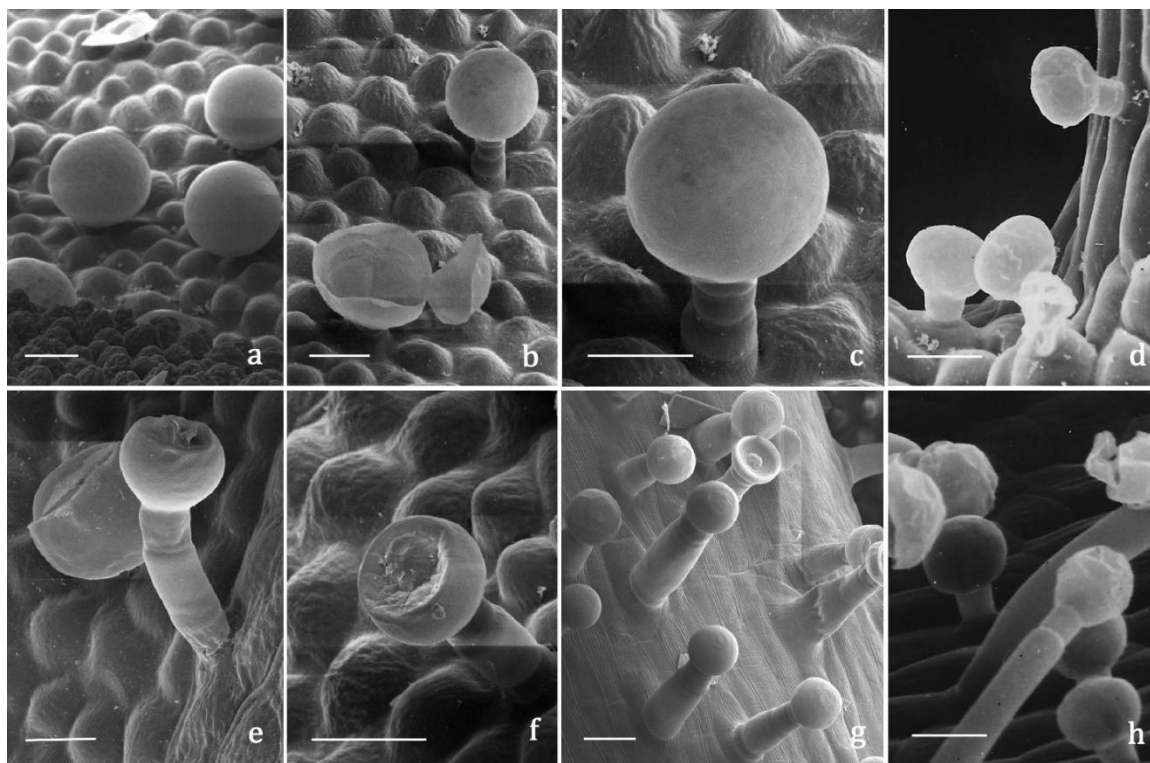
The peltate hairs were composed of one basal epidermal cell, one neck cell, and four secretory cells arranged in a circle (**Figure 1 a, b, e**). Mature trichomes were about 40-60  $\mu\text{m}$  in height and 50-60  $\mu\text{m}$  in diameter at the head. The secretory head was surrounded by a broad subcuticular space, giving to each trichome a spherical shape. Cuticular rupture was often observed in SEM micrographs, in the form of a detached cap (**Figure 1 b**) or following a horizontal line of apparent fragility in the diametrical region of the head (**Figure 1 e**).

The capitate trichomes were composed of one to three stalk cells and a one(two)-celled secretory head (**Figure 1 b-i**). As the number of stalk cells and the features of the head were quite variable, capitates can be divided into four subtypes: short-stalked, medium stalked, ball-like medium stalked, and long-stalked. The short capitates consisted of one basal cell, one stalk cell and one(two) head cells (**Figure 1 d, h**); they were about 20-30  $\mu\text{m}$  in height and 20-30  $\mu\text{m}$  in diameter at the head. The medium capitates possessed one basal cell, one(two)-celled stalk slightly enlarged at the base and a globose one-celled head (50-60  $\mu\text{m}$  high and 20-30  $\mu\text{m}$  wide in diameter at the head). The ball-like medium capitates exhibited features consistent with the stalk, while the head diameter was higher, ranging from 50 to 60  $\mu\text{m}$ . The long capitates were composed of one basal cell, two(three) stalk cells, and one(two) head cells. At maturity, they were about 120-140  $\mu\text{m}$  in height and the head diameter was about 15-20  $\mu\text{m}$ . In the capitates, the secretion accumulated in the small subcuticular space was shown in SEM images by a slight cuticular elevation; on the contrary, the ball-like medium capitate morphotype showed a broad subcuticular space like that of the peltates.

The non-glandular trichomes belonged to two main types, both multicellular and uniseriate. We distinguished thin, filamentous, and sharply pointed hairs, with an average length of 300-400  $\mu\text{m}$ . They were straight or variously twisted, forming a felt-like covering that partially or totally obscured the epidermis of the organs bearing them, so that the observation of the glandular trichomes was not easily allowed. Shorter pointed hairs were also observed, with an acute apex and an average length of 130-160  $\mu\text{m}$ ; the cell diameter was progressively smaller moving from the base to the tip. Although erect,

## Chem. Biodiversity

**Figure 1 a-h.** SEM micrographs showing the trichome morphotypes in *Teucrium fruticans* L. **(a)** peltate trichomes on corolla; **(b)** peltate and ball-like medium-stalked capitate trichomes on corolla; **(c)** ball-like medium-stalked capitate trichome on corolla; **(d)** short-stalked capitate trichomes on leaf; **(e)** peltate and medium-stalked capitate trichomes on calyx; **(f, g)** medium-stalked capitate trichome on corolla; **(h)** short-stalked (asterisk) and long-stalked (arrowhead) capitate trichomes on corolla. Scale bars = 20  $\mu\text{m}$ .



the most distal cells were leaning towards the apex of the organs. Some non-glandular trichomes appeared to have a relatively smooth surface; others had cuticular outgrowths towards the basal cells.

#### Trichome distribution

The data on trichome distribution on stems, leaves, bracts, calyces, and corollas of *T. fruticans* are reported in **Table 1** and **Figures 2 (a-h)** and **3 (a-k)**. The dense covering of the long, thin, filamentous hairs prevented the direct observation of the glandular *indumenta*, however the cutting procedure to obtain the cross sections for the histochemical survey allowed us to assess the evaluation of the trichome distribution.

The leaves mainly exhibited peltates and short capitates, with sporadic ball-like medium capitates; the peltates seemed to be mainly on the interveinal regions, while the short capitates occurred along the veins, especially on the adaxial lamina (**Figure 2 d, f**). The two morphotypes of non-glandular hairs were on both sides: the filamentous hairs formed a dense felt-like covering, whereas the shorter ones were distributed mainly on the veins and margins (**Figure 2 c-h**). The stems and bracts displayed features consistent with the leaves concerning

the hair morphotypes, however they were characterized by a lower density. On flowers, the five glandular trichome morphotypes displayed a diverse distribution pattern on the different whorls. Calyces and corollas exhibited peltates and short capitates on the abaxial sides, the latter being more abundant on calyces (**Figure 3 d, f-h**). On the petal abaxial side also occasional ball-like capitates and medium capitates occurred, whereas medium and long capitates were on the adaxial side. Therefore, the long capitates resulted exclusive of the corolla adaxial surface, prevailing at the tube level in comparison to the lower lip. They were also abundant at the proximal portion of the staminal filaments (**Figure 3 e, i-k**), together with pointed non-glandular hairs.

#### Glandular trichome histochemistry

The results of the histochemical investigation are shown in **Table 2** and **Figure 4 (a-i)**. The peltate trichomes produced exclusively terpenic substances copiously stored within the subcuticular space, which appeared filled with flocculent material (**Figure 4 a, b**). The short- and long-stalked capitates produced and released exclusively a hydrophilic secretion (**Figure 4 c, i**).

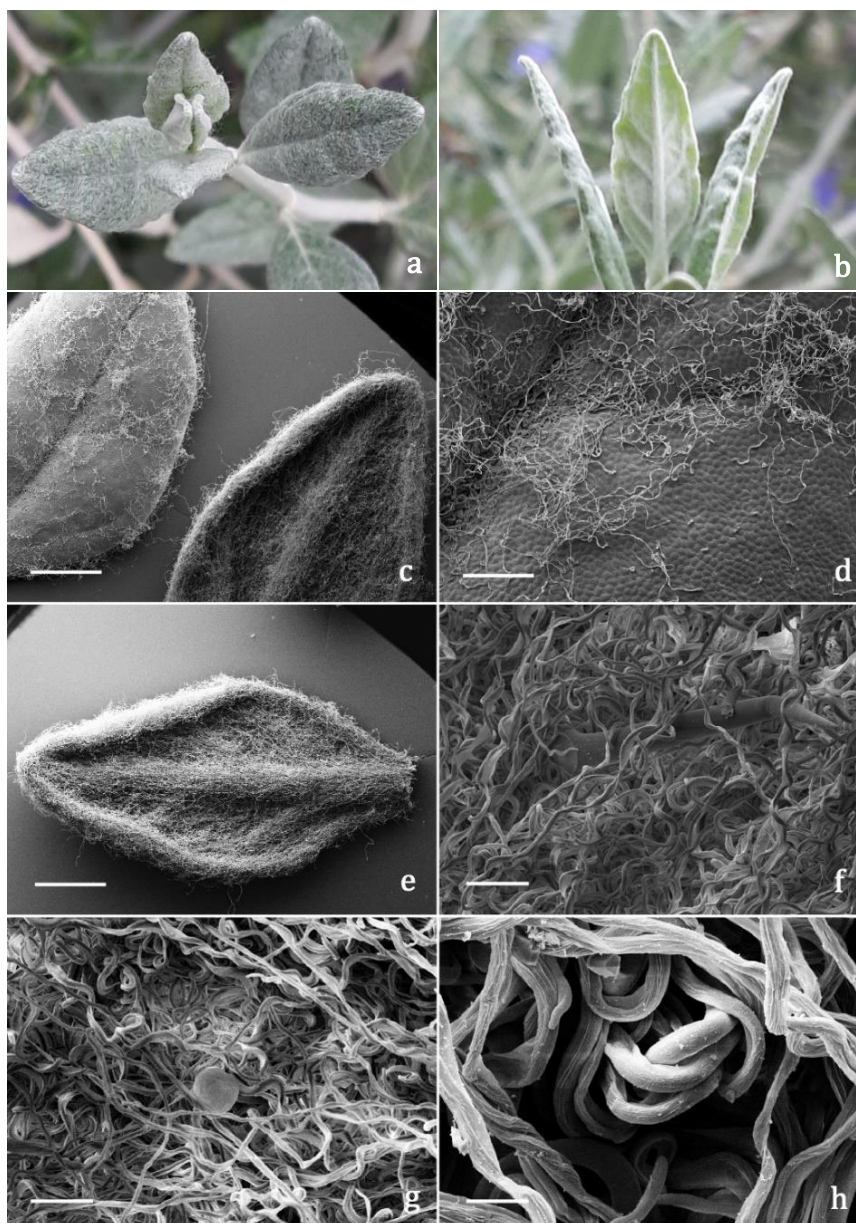
## Chem. Biodiversity

**Table 1.** Distribution pattern of the glandular and non-glandular trichomes in *Teucrium fruticans* L.

Trichome type	Stem	Leaf		Bract		Calyx		Corolla	
		adax	abax	adax	abax	adax	abax	adax	abax
<b>peltate</b>	±	±	+	±	+	-	++	-	++
<b>short capitate</b>	+	+	+	±	+	-	+	-	±
<b>ball-like medium capitate</b>	-	±	±	±	±	-	-	-	±
<b>medium capitate</b>	-	-	-	-	-	-	-	+	±
<b>long capitate</b>	-	-	-	-	-	-	-	+	-
<b>filamentous simple non-glandular</b>	++	+	++	+	++	+	++	+	+
<b>pointed simple non-glandular</b>	±	±	±	±	±	+	±	++	+

Symbols: (-) missing, (±) sporadic, (+) present, (++) abundant

**Figure 2.** (a, b) Macrographs showing a leaf of *Teucrium fruticans* L. (c-h) SEM micrographs showing trichome distribution pattern on the leaves of *Teucrium fruticans* L. (c) General view of the leaves, adaxial (left) and abaxial (right) sides. (d) Detail of the leaf adaxial side. (e) General view of the leaf abaxial side. (f-g) Details of the leaf abaxial side: interveinal region with a pointed non-glandular hair (f) and a peltate trichome (g), along with abundant filamentous non-glandular trichomes. (h) Detail of the cuticular surface of the filamentous non-glandular trichomes. Scale bars: c, e = 1 μm; d = 200 μm; g = 50 μm; f = 20 μm; h = 10 μm.



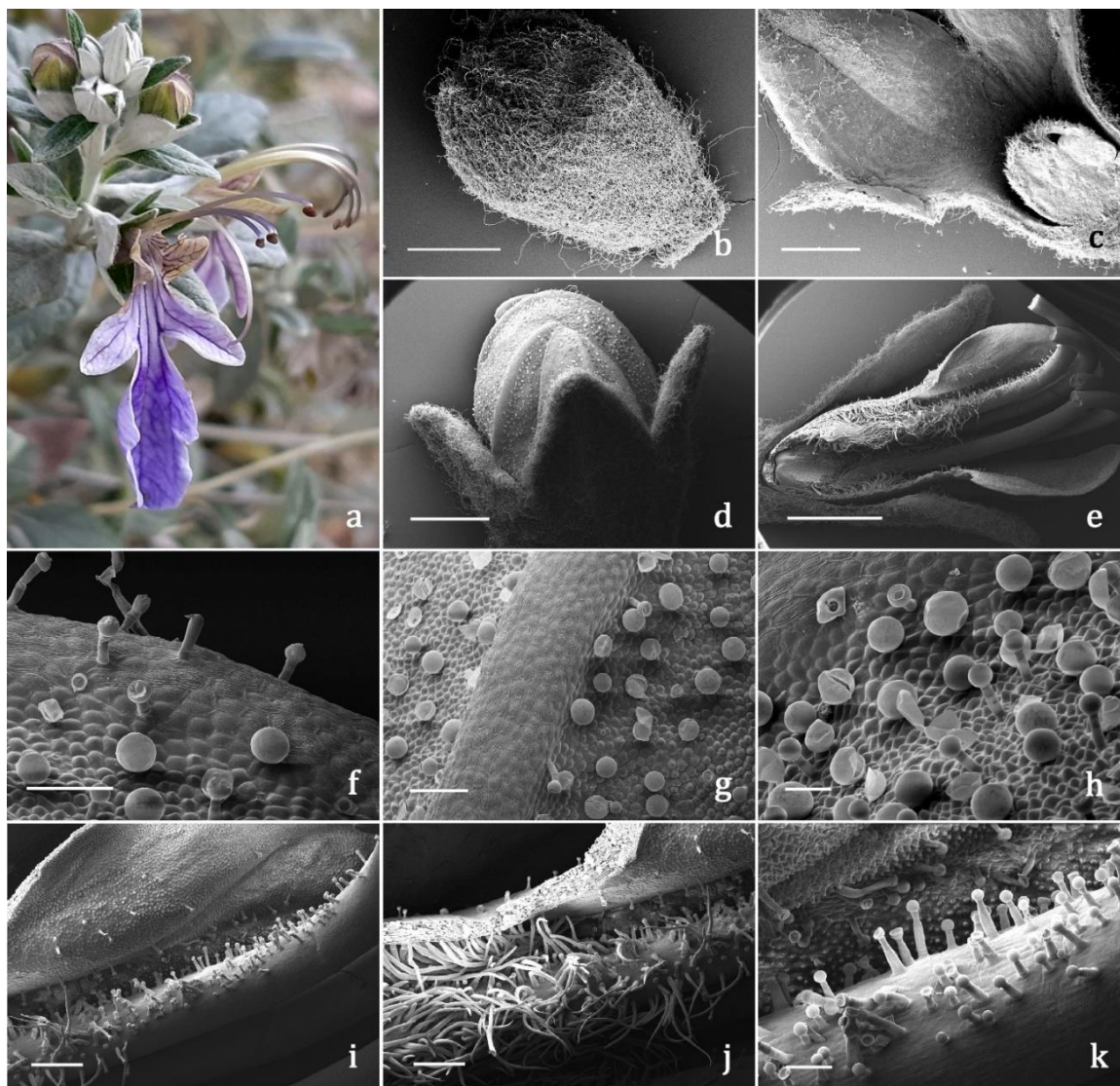
## Chem. Biodiversity

**Table 2.** Results of the histochemical tests on the glandular trichomes of *Teucrium fruticans* L.

Stainings	Target-compounds	peltate	short capitate	ball-like capitate	medium capitate	long capitate
<b>Fluoral Yellow-088</b>	Total lipids	++	-	±	+	-
<b>Nile Red</b>	Neutral lipids	++	-	-	+	-
<b>Nadi reagent</b>	Terpenoids	++	-	+	+	-
<b>Ruthenium Red</b>	Acid polysaccharides	-	+	-	-	+
<b>Alcian Blue</b>	Muco-polysaccharides	-	+	+	-	+
<b>Ferric Trichloride</b>	Polyphenols	-	-	-	++	-

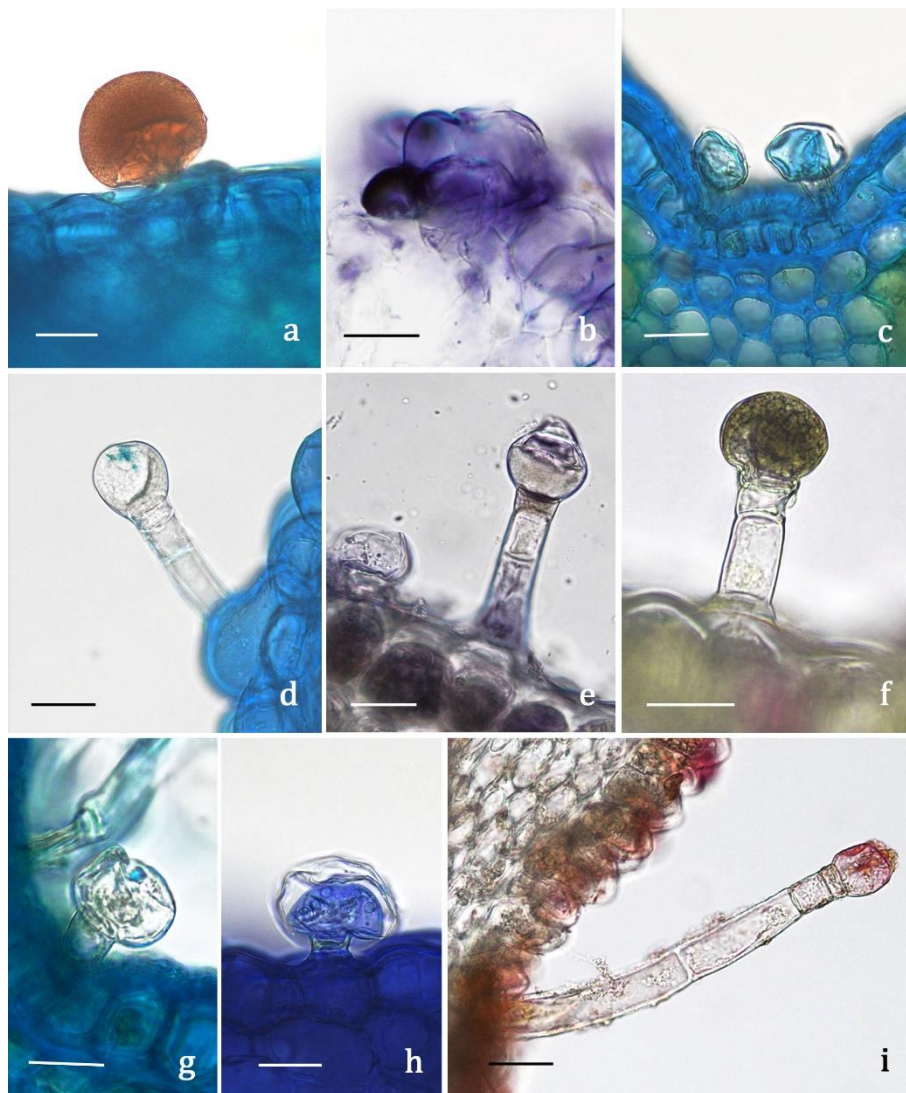
Symbols: (-) negative response; (±) sporadically positive response; (+) positive response; (++) intensely positive response

**Figure 3** (a) Macrograph showing a flower of *Teucrium fruticans* L. at anthesis. (b-k) SEM micrographs showing trichome distribution pattern on the flower of *Teucrium fruticans* L. (b) Floral bud fully covered by filamentous non-glandular trichomes. (c) Calyx adaxial surface. (d) Distal portion of the calyx and corolla abaxial surfaces. (e) Corolla adaxial surfaces and staminal filaments. (f-h) Corolla abaxial side: margin of the lower lip (f), veinal region (g), interveinal region (h) with peltates, short-stalked, medium-stalked, and ball-like capitates. (i-k) Corolla adaxial surface at the proximal portion and staminal filament with abundant long-stalked capitates and pointed non-glandular trichomes. Scale bars: b-e = 1 mm; i, j = 200 μm; f, g, k = 100 μm; h = 50 μm.



## Chem. Biodiversity

**Figure 4.** LM micrographs showing the results of the histochemical investigation on the glandular trichomes in *Teucrium fruticans* L. **(a–b)** peltate: Alcian Blue **(a)**, Nadi reagent **(b)**. **(c)** Short-stalked capitate: Alcian Blue. **(d–f)** Medium-stalked capitate: Alcian Blue **(d)**, Nadi reagent **(e)**, Ferric Trichloride **(f)**. **(g–h)** Ball-like medium-stalked capitate: Alcian Blue **(g)** and Nadi reagent **(h)**. **(i)** Long-stalked capitate: Ruthenium Red. Scale bars = 20  $\mu\text{m}$ .



The medium capitates massively synthesized phenolic compounds, together with a lower terpenic fraction (**Figure 4 e, f**); the hydrophilic dyes invariably exhibited negative responses (**Figure 4 d**). The ball-like medium capitates showed only faintly positive responses to mucopolysaccharides (staining few secretion droplets within the storing chamber) and terpenes (staining only the cytoplasm of the secretory cells) (**Figure 4 g, h**).

#### Phytochemical investigation

#### Essential Oils characterization

The GC-MS characterization of the EOs obtained from February (vegetative stage) and April (anthesis stage) 2022 samplings are reported in **Table 3**. February EO profiles were characterized by the presence of 51 compounds, accounting for 91.88% of the total. Sesquiterpene hydrocarbons dominated the profiles, with 17

derivatives and a relative percentage of 69.30%. Oxygenated sesquiterpenes were the second main represented class of compounds (21 compounds, 11.81%), followed by non-terpene derivatives (5 compounds, 4.13%), fatty acids and their derivatives (4 compounds, 3.99%), monoterpene hydrocarbons (3 compounds, 2.86%), and oxygenated monoterpenes (2 derivatives, 0.65%).

The main components were  $\beta$ -caryophyllene (14, 28.30%), germacrene D (20, 19.16%),  $\alpha$ -humulene (18, 7.27%), and  $\beta$ -selinene (21, 6.98%); four compounds were found with percentage greater than 2.2%: linalool (3, 2.47%),  $\beta$ -caryophyllene oxide (33, 2.30%),  $\alpha$ -cadinol (44, 2.88%) and hexahydrofarnesylacetone (49, 2.88%); all the remaining compounds were detected with values lower than 2.2%.

Concerning April EO profiles, 33 compounds were identified, with a total percentage of 93.19%. Sesquiterpenes were still the main class of derivatives, with 17 compounds and a percentage of 53.02%, while the

## Chem. Biodiversity

second main class was represented by monoterpene derivatives (3 compounds, 20.65%), due to a high percentage of  $\beta$ -myrcene (1, 13.77%), followed by  $\beta$ -pinene (2, 3.68%), and linalool (3, 3.20%). Oxygenated sesquiterpenes (10 compounds) accounted for 7.94%, while non terpenes (3 compounds) and fatty acid derivatives (1 compound) were found in percentages of 5.30% and 5.82%, respectively.

**Table 3.** Chemical composition of EOs obtained from *Teucrium fruticans* L. in February (vegetative stage) and April (anthesis stage) 2022.

Constituents			Feb22 <sup>b</sup>	Apr22 <sup>b</sup>
			LRI <sup>a</sup>	%
1	MH	$\beta$ -myrcene	964	13.77
2	MH	$\beta$ -pinene	1002	3.68
3	MH	<b>linalool</b>	1078	<b>2.47</b>
4	MH	terpinolene	1299	tr
5	SH	$\alpha$ -terpinyl acetate	1311	0.13
6	MO	terpineol	1314	0.23
7	SH	$\alpha$ -Copaene	1338	0.12
8	SH	$\beta$ -bourbonene	1346	0.26
9	SH	$\beta$ -cis-caryophyllene	1360	tr
10	SH	Tetrahydrogeranylacetone	1366	tr
11	NH	Dihydrodeidro-b-ionone	1372	0.89
12	MO	Methyl eugenol	1375	0.42
13	MO	Isospathulenol	1376	tr
14	SH	<b><math>\beta</math>-caryophyllene</b>	1380	<b>28.30</b>
15	SH	$\beta$ -Copaene	1386	1.06
16	SH	$\beta$ -cubenene	1388	0.56
17	SH	Isogermacrene D	1403	0.76
18	SH	<b><math>\alpha</math>-humulene</b>	1419	<b>7.27</b>
19	SH	epi- $\beta$ -Caryophyllene	1422	1.56
20	SH	<b>Germacrene D</b>	1442	<b>19.16</b>
21	SH	<b><math>\beta</math>-selinene</b>	1449	<b>6.98</b>
22	SH	$\gamma$ -gurjunene	1454	2.05
23	SH	$\alpha$ -selinene	1455	1.79
24	SH	$\beta$ -bisabolene	1461	1.21
25	SH	$\delta$ -cadinene	1471	0.78
26	SH	$\beta$ -sesquiphellandrene	1475	1.08
27	SH	$\alpha$ -ylangene	1484	tr
28	SO	$\alpha$ -copaen-11-ol	1511	tr
29	SO	Caryophyllene peroxide I	1516	tr
30	SO	Nerolidol	1524	tr
31	SO	Farnesol	1527	0.36
32	SO	Spathulenol	1541	0.27
33	SO	<b><math>\beta</math>-caryophyllene oxide</b>	1545	<b>2.30</b>
34	SH	$\beta$ -elemene	1549	tr
35	SO	Epiglobulol	1557	0.19
36	SO	Viridiflorol	1565	0.21
37	SO	Humulene epoxide II	1569	0.37
38	SO	Ledene oxide (II)	1575	0.11
39	SO	1,10-diepicubenol	1585	0.21
40	SO	Isoaromadendrene oxide	1605	tr
41	SO	Cubenol	1612	0.22
42	SO	T-muurolool	1615	0.30
43	SO	$\delta$ -cadinol	1618	0.15
44	SO	<b><math>\alpha</math>-cadinol</b>	1627	<b>2.88</b>
45	SO	Aromadendrene oxide II	1631	0.10
46	SO	Valeranone	1645	0.59
47	SO	Bisabolene epoxide	1658	0.22
48	SO	(1R,7S)-Germacra-4(15),5,10(14)-trien-1 $\beta$ -ol	1663	0.17
		<b>Hexahydrofarnesyl acetone (6,10,14-trimethyl-2-pentadecanone)</b>		
49	SO		1802	<b>2.88</b>
50	NH	Dodecanoic acid derivative	1829	0.93

51	FA	Palmitic acid	1913	1.11	5.82
52	MH	Geranyl- <i>p</i> -cymene	1977	0.31	
53	FA	Myristic acid derivative	1981	0.57	
54	FA	$\gamma$ -palmitolactone	2006	0.33	
55	SH	Zizaene (Khusimene)	2079	1.36	1.53
56	FA	Palmitic acid derivative	2104	1.97	
57	NH	Eicosane	2299	0.55	2.33
58	NH	Heneicosane	2371	0.97	2.07
59	NH	Octacosane	2435	0.82	

Monoterpene hydrocarbons	<b>2.86</b>	<b>20.65</b>
Oxygenated monoterpenes	<b>0.65</b>	<b>0.45</b>
Sesquiterpene hydrocarbons	<b>69.30</b>	<b>53.02</b>
Oxygenated sesquiterpenes	<b>11.81</b>	<b>7.94</b>
Non terpenes	<b>3.27</b>	<b>5.30</b>
Fatty acids and derivatives	<b>3.99</b>	<b>5.82</b>
Identified compounds	<b>91.88</b>	<b>93.19</b>

The main common compounds are highlighted in bold characters.

<sup>a</sup>LRI = Linear Retention Index, experimentally obtained on a VF-5ms column using a C6-C36 mixture of n-alkanes

<sup>b</sup>Data reported were obtained as average of three replicates.

The main component of April 2022 EO was  $\beta$ -caryophyllene (14, 15.72%), followed by  $\beta$ -myrcene (1, 13.77%), and germacrene D (20, 11.55%);  $\alpha$ -humulene (18, 6.49%),  $\beta$ -selinene (21, 6.49%),  $\beta$ -caryophyllene oxide (33, 1.82%), and hexahydrofarnesylacetone (49, 1.55%) were still among the main derivatives, but were slightly reduced, while  $\alpha$ -cadinol (44, 2.96%) and linalool (3, 3.20%) were slightly increased. Although the number of total identified components in April EO was lower than in February EO, the presence of seven exclusive compounds (1, 2, 11, 15, 17, 19, 22) was highlighted; among them,  $\beta$ -myrcene (1, 13.77%) was the most abundant, followed by  $\beta$ -pinene (2, 3.68%).

Therefore, the variability between the two profiles was primarily linked to quantitative data, with the exception of the occurrence of  $\beta$ -myrcene (1) and  $\beta$ -pinene (2) at the flowering stage.

## Discussion

### Micromorphological survey

Previous research into micromorphological features of *T. fruticans* mentioned nutlet morphology, pollen, and vegetative anatomy, with only general references to trichomes. The target species was studied in association with congeneric species from the same geographical areas or in relation to habitat-related adaptation [17]. Altogether the above-mentioned micromorphological traits proved to have taxonomic value for sectional and interspecific classification in the genus [18–20]. However, the *indumentum* features of the target species were never thoroughly investigated, and this work represents the first in-depth report about its secretory structures.

Our micromorphological survey on the vegetative and reproductive organs evidenced the presence of glandular and non-glandular



## Chem. Biodiversity

*indumenta*. The glandular trichomes belonged to the peltate and capitate types, widespread in all the representatives of the Lamiaceae family [21–25].

The structure of peltates matched the results of previous works performed on congeneric species. As a matter of fact, they exhibited a tetracellular secreting head [6, 14, 18]. With regards to the capitates, the short- and long-stalked subtypes were consistent with literature information [6], matching the morphotypes already described: various subforms of types B capitates in Navarro and El Qualidi [18], type B, and C capitates in Bini Maleci and Servettaz [14].

The occurrence of the medium-stalked and ball-like morphotypes was never observed in the *Teucrium* species examined so far. However, it should be noted that some authors did not report a detailed partition of capitates, whereas others recognized various subforms adopting discordant terminologies. Therefore, performing an accurate comparison with all the previously described morphotypes resulted difficult to do. A redefinition of trichome nomenclature would be highly desirable.

Concerning the non-glandular *indumentum*, the simple, uniseriate hairs were observed in all the species examined so far, generally defined as unbranched [11,12] or aciculate [14]. The filamentous hairs were detected in all the member of *T. sect. Teucrium* from Iran and Turkey [11,12]; they matched the type H hairs in Navarro and El Qualidi [18] and the coating flagelliform trichomes in Grubešić et al. [19]. They partially or totally covered the epidermis of the vegetative and reproductive organs, making the observation of the glandular hairs tough.

The distribution pattern of the different trichomes types proved consistent with literature information, especially with reference to the peltate and short-stalked capitates, being widespread on the whole plant epidermises of all the investigated congeneric species [6,11,12,17,18,19,20]. Concerning the long-stalked morphotype, it was peculiar of the reproductive organs, specifically to the corolla, whereas in *T. chamaedrys* it exclusively occurred on the calyx [6,14]. The medium stalked morphotypes were exclusive of the corolla, while the ball-like capitates resulted sporadic on leaves, bracts, and corollas. However, the existence of discordant terminologies in previous contributions made the comparison with literature information for the two latter types of hairs unreliable.

Concerning the histochemistry, this work represents the first contribution in which different histochemical dyes were employed to characterize the chemical nature of the secretory products in *T. fruticans*. The glandular activity led to a heterogeneous secretion, with lipophilic and hydrophilic components, as documented in our previous study on *T. chamaedrys* [6].

In the peltates, the secreting activity was fully oriented toward the synthesis and storage of materials of terpenoidic nature, as occurred in several congeneric species [7–10] and in other members of Lamiaceae, such as *Scutellaria altissima*, *S. caucasica*, *Lavandula dentata*, and *Ballota acetabulosa* [21–24]. In *T. chamaedrys*, on the contrary, the peltate secretion resulted to be more complex, with a low terpenoidic content and major hydrophilic fractions, as it was also observed in *Scutellaria brevibracteata* [25].

The short capitates showed an exclusive hydrophilic secretion, consisting of mucopolysaccharides, as widely documented in most of the studied members of Lamiaceae [6,26].

The medium and the ball-like capitates displayed heterogeneous secretion, due to the co-occurrence of terpenoids, along with polyphenolic or polysaccharidic fractions, respectively. The long capitates were exclusive mucopolysaccharides producers, whereas they synthesized only terpenes in *T. chamaedrys* [6]. They produced, on the contrary, a complex secretion in *S. brevibracteata*, *S. altissima*, *S. caucasica*, and *B. acetabulosa* [21,22,24,25].

Previous works on congeneric species of *Teucrium* highlighted the general lipophilic secretion of the capitate morphotype by recording the positive response to Sudan Black, Nile Blue, and Osmium tetroxide reagents [9,10], but no partition on capitate subforms was indicated.

In the attempt at drawing a link between the histochemical results and the trichome distribution pattern, we can assume that the EO production of *T. fruticans* could be correlated mainly with the presence of peltate trichomes, both on leaves and flowers, as well as of ball-like and medium capitates. On the other hand, it is plausible to think that non-terpene derivatives could be linked to an abundance of capitate trichomes, mainly the short and long-stalked ones, on the vegetative and the reproductive organs, respectively.

In this work, we highlighted the well-known importance of the non-glandular trichomes as distinctive taxonomic characters for the recognition of *Teucrium sect. Teucrium*, confirming the presence of the simple filamentous coating hairs on the whole plant surface [6,14].

### Phytochemical investigation

Focusing on phytochemistry, data highlighted for both samples a volatile profile with high complexity, with respectively 51 and 33 compounds identified in February and April 2022 EOs. In both profiles a clear predominance of sesquiterpenes over monoterpenes was detected. This result was consistent with data reported for *T. fruticans* grown in Sicily, Malta, and Tuscany, though a limited total number of compounds were found in the Sicilian and Maltese populations. The EOs investigated herein, as those obtained from *T. fruticans* growing in the Mediterranean region [3,16], were characterized by the production

## Chem. Biodiversity

of  $\beta$ -caryophyllene (14) and germacrene D (20) as main sesquiterpene constituents. Moreover, the presence of  $\beta$ -myrcene (1) and  $\beta$ -pinene (2) in April EOs suggested that their production may be related to the flowering phase. This hypothesis is supported by the results from Flamini et al.<sup>[3]</sup> following the comparison of the EOs profiles obtained at anthesis and fruiting stages. As a matter of fact, these authors highlighted the presence of these compounds only at the flowering phase.

These two molecules were recognized among the twelve most common volatile compounds spontaneously emitted in floral scents<sup>[27]</sup>. These could explain their production in the target species during the flowering period, with the primary purpose of attracting and guiding pollinators. Additionally, myrcene is also involved in the synthesis of pheromones of some insects, including moths<sup>[28]</sup>. However, alternative and synergistic roles, including plant defense, may be hypothesized. Indeed, myrcene (7) is involved in tritrophic protective mechanisms and has been shown to have allelopathic defense functions<sup>[29]</sup>, in addition to inhibit fungal proliferation together with  $\beta$ -pinene (2)<sup>[30]</sup>. A synergistic defense strategy was also documented in conifers as a mechanism against the attack of pests<sup>[31]</sup>.

Nevertheless, the EO profiles investigated herein differed for some of the other main compounds from Sicilian, Maltese, and Tuscan samples. In detail, our samples seemed to be unique in the production of  $\alpha$ -cadinol (44) and hexahydrofarnesyl acetone (49), while the Sicilian and Maltese species in that of 1-octen-3-ol<sup>[16]</sup>, and the Tuscan one in that of  $\beta$ -phellandrene<sup>[3]</sup>. By comparing the most abundant compounds of other congeneric species belonging to the *Teucrium* section, it was found that  $\beta$ -caryophyllene and germacrene D were already detected<sup>[1]</sup>. In addition,  $\beta$ -caryophyllene (14) was registered among the main compounds in species of different origins belonging to *Polium* and *Chamaedrys* sections, such as *T. montanum*, *T. capitatum* and *T. folium*, also those coming from Sicily<sup>[15]</sup>.

Given that there is no evidence referring to the potential biological activity of *T. fruticans* EO derivatives, some evaluations could be proposed, by taking into consideration the bioactivity ascribed by the literature to the main detected compounds. Focusing on the main components, several works reported the potential biological actions of EOs with  $\beta$ -caryophyllene (14) as main constituent<sup>[1,32,33]</sup>. This bicyclic sesquiterpene was shown to be responsible for antioxidant, antimicrobial, anti-inflammatory, analgesic, anti-neurodegenerative, and antitumor effects<sup>[1,32,34]</sup>. Furthermore, a synergistic action between all the major sesquiterpenes recognized in *T. fruticans* EO should be considered: for example,  $\beta$ -caryophyllene (14) and germacrene D (20), in association to  $\alpha$ -cadinol (44), are recognized as major compounds in plant essential oils with anti-tumor potentials<sup>[32,35,36,37]</sup> and could

induce a marked reduction of IL-1 and TNF- $\alpha$  levels in mice treated with oils rich in them. Moreover, the mixture of  $\beta$ -caryophyllene and  $\alpha$ -humulene (18) could activate anti-inflammatory pathways, by inhibiting both COX2 and iNOS<sup>[38,39]</sup>, and even the cannabinoid system<sup>[40]</sup>. Specifically, *in vivo* studies demonstrated that the cannabinoid type 2 receptor agonism of  $\beta$ -caryophyllene mediated effects in different pathological conditions of various apparatuses<sup>[33]</sup>. Antifungal, antibacterial, and cytotoxic actions were identified as other activities of these sesquiterpenes, some of which are shared by  $\beta$ -selinene (21)<sup>[32]</sup>, which was shown to have antioxidant, antibacterial, anti-inflammatory, analgesic, and antipyretic *in vitro* effects<sup>[32,41]</sup>. Finally, hexahydrofarnesyl acetone (49) is noteworthy, as it resulted to be one of the most abundant compounds in Nigerian *Ficus* spp. essential oils showing, among others, antibacterial, antioxidant, anti-inflammatory, and antifungal properties<sup>[42]</sup>. The overall information on the EO compounds from *T. fruticans* aerial parts and their potential biological activities could become useful to drive specific *in vitro* bioactivity assays in future studies.

As final consideration, it is interesting to note that all the molecules discussed so far could also explain properties unrelated to human pharmacology, such as antiphytoviral, insecticidal, larvicidal, antiprotozoal, repellent, and phytotoxic<sup>[1,32,43]</sup>, worthy of further study. Finally, many of these compounds conferred a typical woody odour to the essential oil, a feature that could find potential usefulness in the food and cosmetic fields<sup>[43]</sup>.

## Conclusions

This multidisciplinary investigation allowed us for the presentation of a new approach to study the target species, by combining the micromorphological characterization of the glandular *indumentum* with the production of essential oil. Five trichomes morphotypes were detected, together with their distribution pattern on the vegetative and reproductive organs, by means of light and scanning microscopy techniques. Both peltates and medium-stalked capitates were the main trichomes involved in the release of terpenes, to a lesser degree supported by ball-like capitate morphotype, as confirmed by the first histochemical survey presented herein. In addition, for the first time, the essential oil's profile of a species coming from Northern Italy was characterized through GC-MS, with  $\beta$ -caryophyllene, germacrene D,  $\alpha$ -humulene and  $\beta$ -selinene as dominant compounds. The correlation of the phytochemical results with the biological activities ascribed by the literature to the most abundant compounds, allowed us for a better understanding of the potentiality of this plant's derivative and the importance of future bioactivity assays.

## Chem. Biodiversity

Finally, the overall information derived from the scientific research will be made available to the visitors of the Ghirardi Botanic Garden through the development of original interpretative apparatuses in an Open science perspective, according to the policies of the University Third Mission.

## Experimental Section

### Plant material

*Teucrium fruticans* L. was cultivated at the Ghirardi Botanic Garden (Toscolano Maderno, BS, Lombardy, Italy) of the Department of Pharmaceutical Sciences of the University of Milan. The sampling procedures for the micromorphological and phytochemical investigations were performed concurrently in February and April 2022. Voucher specimens were labelled GBG2021/051 and GBG2021/052 and deposited in the *Herbarium* of the Ghirardi Botanic Garden. Prof. G. Fico identified the species according to Pignatti et al.<sup>[4]</sup>

### Micromorphological survey

The morphotypes, distribution pattern, and histochemistry of the trichomes on stems, leaves, bracts, calyces, and corollas were studied by means of Light Microscopy (LM), Fluorescence Microscopy (FM) and Scanning Electron Microscopy (SEM). At least ten replicates per each plant part were examined to evaluate the variability level of the micromorphological features. The distribution pattern of trichomes was qualitatively assessed using the following symbols: (-) missing, not observed in any of the replicates; ( $\pm$ ) sporadic, present in no more than four replicates; (+) present in all the replicates; (++) abundant and covering the whole organ surface in all the replicates.

### Light Microscopy (LM) and Fluorescence Microscopy (FM)

Cross sections of the fresh examined plant parts were obtained with a razor blade and were analysed by LM and FM.

The main classes of the secondary metabolites produced in the glandular trichomes were investigated using the following histochemical tests: Toluidine Blue as a general dye<sup>[44]</sup>, Fluoral Yellow-088 for total lipids<sup>[45]</sup>, Nile Red for neutral lipids<sup>[46]</sup>, Nadi reagent for terpenes<sup>[47]</sup>, Ruthenium Red for acid polysaccharides<sup>[48]</sup>, Alcian Blue for muco-polysaccharides<sup>[44]</sup>, and Ferric Trichloride for polyphenols<sup>[49]</sup>. Control staining procedures were concurrently performed. Observations were carried out under a Leitz DM-RB Fluo optical microscope equipped with a Nikon® digital camera.

### Scanning Electron Microscopy (SEM)

For SEM observations, small segments of the examined vegetative and reproductive organs were FAA-fixed for 7 days, dehydrated with ascending ethanol series up to absolute, critical-point dried, and carbon gold-coated.

Observations were performed under a Zeiss® EVO MA15 SEM operating at 10 kV at the Interdepartmental Center for Electron Microscopy and Microanalysis Services (M.E.M.A.) of the University of Florence (Florence, Italy).

### Phytochemical survey

#### Essential oils isolation

Plant aerial parts were air-dried and stored at room temperature, in the dark. For the hydrodistillation, 110 g of plant aerial parts were coarsely grounded, transferred in a 4L flask containing 2.0L of water and subjected to distillation in a standard Clevenger apparatus for 3 h. Distillation was repeated three times for each sample and oils obtained were analyzed by GC-MS separately.

#### GC-MS characterization

The GC-MS analyses were performed at the Department of Chemistry, University of Milan, using a TRACE ISQ QD Single Quadrupole GC-MS. Separation of EO was performed with a capillary column VF-5ms (5% phenyl-methyl-polisiloxane, length 30m, 0.25 mm i.d., 0.1  $\mu$ m film thickness). The temperature gradient was: 8 min at 50 °C, then 4 °C min<sup>-1</sup> to 60 °C, then 6 °C min<sup>-1</sup> from 60 °C to 160°C, and finally 20 °C min<sup>-1</sup> from 160 °C to 280 °C. Injector and detector temperatures were set to 280 °C; carrier gas Helium, flux 1 ml min<sup>-1</sup>. Mass range detected was 50–500 m/z. The EOs were analyzed pure or diluted 1:100 with n-hexane; injection volume was 1  $\mu$ l. Mass spectra were analyzed using the Wiley Mass spectra Library, NIST Mass Spectral Search Program and NIST Tandem Mass Spectral library 2.3. Compounds were identified by mass fragmentation and retention index, compared with data stored in mass databases (WILEY, NIST18). Relative percentages reported were obtained as average of measures obtained for each sample, with a standard deviation always below 5.0% of each single value.

## Funding

This work was supported by the Lombardy Region, under the Call for the Enhancement of Museum Lr. 25/2016, year 2021.

## Conflicts of interests

The authors declare no conflicts of interest

## Author Contribution Statement

C. Giuliani, M. Bottoni, F. Milani collected plant material for investigations. C. Giuliani, M. Bottoni performed micromorphological and histochemical analyses. M. Bottoni, F. Milani, L. Santagostini isolated and analyzed essential oils. C. Giuliani, M. Bottoni wrote the draft manuscript. All the authors revised and edited the manuscript. The research design was elaborated, supervised, and administrated by G. Fico, also responsible for funding acquisition. All authors approved the published version of the manuscript.

## References

- [1] R. Gagliano Candela, S. Rosselli, M. Bruno, G. Fontana, 'A review of the phytochemistry, traditional uses and biological activities of the essential oils of genus *teucrium*', *Planta Med.* **2021**, *87*, 432–479.
- [2] T. Tuttolomondo, M. Licata, C. Leto, M. Letizia Gargano, G. Venturella, S. La Bella, 'Plant genetic resources and traditional knowledge on medicinal use of wild shrub and herbaceous plant species in the Etna Regional Park (Eastern Sicily, Italy)', *J. Ethnopharmacol.* **2014**, *155*, 1362–1381.
- [3] G. Flamini, P. L. Cioni, I. Morelli, S. Maccioni, G. Monti, 'Composition of the essential oil of *Teucrium fruticans* L. from the Maremma Regional Park (Tuscany, Italy)', *Flavour Fragr. J.* **2001**, *16*, 367–369.
- [4] S. Pignatti, R. Guarino, M. La Rosa, 'Flora d'Italia', Edagricole di New Business Media, Bologna, 2017–2019.
- [5] R. Acquaviva, C. Genovese, A. Amodeo, B. Tomasello, G. Malfa, V. Sorrenti, G. Tempera, A. P. Addamo, S. Ragusa, T. Rosa, F. Menichini, C. Di Giacomo, 'Biological activities of *Teucrium flavum* L., *Teucrium fruticans* L., and *Teucrium siculum* rafin crude extracts', *Plant Biosyst.* **2018**, *152*, 720–727.
- [6] C. Giuliani, M. Bottoni, R. Ascrizzi, F. Milani, A. Spada, G. Flamini, G. Fico, 'Morphology and phytochemistry of *Teucrium chamaedrys* L. (Lamiaceae) cultivated at the Ghirardi Botanic Garden (Lombardy, Northern Italy)', *Flora* **2021**, *282*, 151898.
- [7] A. K. Ruiters, P. M. Tilney, S. F. Van Vuuren, A. M. Viljoen, G. P. P. Kamatou, B.-E. Van Wyk, 'The anatomy, ethnobotany, antimicrobial activity and essential oil composition of southern African species of *Teucrium* (Lamiaceae)', *South African J. Bot.* **2016**, *102*, 175–185.
- [8] V. Lianopoulou, A. M. Bosabalidis, A. Patakas, D. Lazari, E. Panteris, 'Effects of chilling stress on leaf morphology, anatomy, ultrastructure, gas exchange, and essential oils in the seasonally dimorphic plant *Teucrium polium* (Lamiaceae)', *Acta Physiol. Plant.* **2014**, *36*, 2271–2281.
- [9] T. Antunes, I. Sevinat-Pinto, J. G. Barroso, C. Cavaleiro, L. R. Salgueiro, 'Micromorphology of trichomes and composition of essential oil of *Teucrium capitatum*', *Flavour Fragr. J.* **2004**, *19*, 336–340.
- [10] C. Cavaleiro, L. R. Salgueiro, T. Antunes, I. Sevinat-Pinto, J. G. Barroso, 'Composition of the essential oil and micromorphology of trichomes of *Teucrium salviastrum*, an endemic species from Portugal', *Flavour Fragr. J.* **2002**, *17*, 287–291.
- [11] G. Ecevit Genç, T. Özcan, T. Dirmenci, 'Micromorphological characters on nutlet and leaf indumentum of *Teucrium* sect. *Teucrium* (Lamiaceae) in Turkey', *Turk. J. Botany* **2015**, *39*, 439–448.
- [12] M. Eshratifar, F. Attar, K. Mahdigholi, 'Micromorphological studies on nutlet and leaf indumentum of genus *Teucrium* L. (Lamiaceae) in Iran', *Turk. J. Botany* **2011**, *35*, 25–35.
- [13] L. Bini Maleci, O. Servettaz, B. Mori, C. Rocca, 'Prime ricerche fitochimiche ed istologiche su *Teucrium chamaedrys* L.', *Stud. Urbinate* **1987**, *29*, 137–143.
- [14] L. Bini Maleci, O. Servettaz, 'Morphology and distribution of trichomes in Italian species of *Teucrium* sect. *Chamaedrys* (Labiatae) — a taxonomical evaluation', *Pl. Syst. Evol.* **1991**, *174*, 83–91.
- [15] G. Catinella, N. Badalamenti, V. Ilardi, S. Rosselli, L. De Martino, M. Bruno, 'The essential oil compositions of three *Teucrium* taxa growing wild in Sicily: HCA and PCA analyses', *Molecules* **2021**, *26*, DOI 10.3390/molecules26030643.
- [16] R. Gagliano Candela, V. Ilardi, N. Badalamenti, M. Bruno, S. Rosselli, F. Maggi, 'Essential oil compositions of *Teucrium fruticans*, *T. scordium* subsp. *scordioides* and *T. siculum* growing in Sicily and Malta', *Nat. Prod. Res.* **2020**, DOI 10.1080/14786419.2019.1709193.
- [17] T. Özcan, 'Morphological Characteristics of *Teucrium* Species: Vegetative Morphology'. In: Stanković, M. (eds) *Teucrium* Species: Biology and Applications. Springer, Cham, 2020
- [18] T. Navarro, I. El Oualidi, Synopsis of *Teucrium* L. (Labiatae) in the Mediterranean region and surrounding areas', *Fl. medit.*, 2000, *10*, 349–363.
- [19] Grubešić, R.J., Vladimir-Knežević, S., Kremer, D., Kalodera, Z., Vuković, J., 'Trichome micromorphology in *Teucrium* (Lamiaceae) species growing in Croatia'. *Biologia* (Bratisl). **2007**, *62*, 148–156.
- [20] D. Lakusic, B. Lakusic, 'Morpho-anatomical differentiation of the species *Teucrium montanum* (Lamiaceae) in the Central Balkan Peninsula' *Bot. Serb.* **2014**, *38*, 109–120.
- [21] C. Giuliani, M. Bottoni, R. Ascrizzi, L. Santagostini, A. Papini, G. Flamini, G. Fico, 'A novel study approach on *Scutellaria altissima* L. cultivated at the Ghirardi Botanic Garden (Lombardy, Italy)', *Plant Biol.* **2020**, *22*, 1013–1021.
- [22] C. Giuliani, M. Bottoni, R. Ascrizzi, F. Milani, G. Flamini, G. Fico, '*Scutellaria caucasica* A. Ham.: Morphological features and headspace characterization', *Flora Morphol. Distrib. Funct. Ecol. Plants* **2020**, *269*, DOI 10.1016/j.flora.2020.151638.
- [23] C. Giuliani, M. Bottoni, R. Ascrizzi, F. Milani, A. Papini, G. Flamini, G. Fico, '*Lavandula dentata* from Italy: Analysis of Trichomes and Volatiles', *Chem. Biodivers.* **2020**, *17*, e2000532.
- [24] C. Giuliani, M. Bottoni, R. Ascrizzi, F. Milani, S. Falsini, A. Papini, G. Flamini, G. Fico, 'Micromorphological and phytochemical survey on *Ballota acetabulosa* (L.) Benth', *Plant Biol.* **2021**.
- [25] C. Giuliani, M. Bottoni, R. Ascrizzi, L. Santagostini, A. Papini, G. Flamini, G. Fico, '*Scutellaria brevibracteata* subsp. *subvelutina* (Rech.f.) Greuter & Burdet: morphological and phytochemical characterization', *Nat.*

## Chem. Biodiversity

- Prod. Res.* **2020**, 1–9.
- [26] C. Giuliani, L. Maleci Bini, 'Insight into the structure and chemistry of glandular trichomes of Labiatae, with emphasis on subfamily Lamioideae', *Plant Syst. Evol.* **2008**, 276, 199.
- [27] J.T. Knudsen, R. Eriksson, J. Gershenzon and B. Ståhl, 'Diversity and distribution of floral scent', *The botanical review* **2006**, 72(1), pp.1-120
- [28] R.L. Meagher and P.J. Landolt, 'Attractiveness of binary blends of floral odorant compounds to moths in Florida, USA'. *Entomologia experimentalis et applicata*, **2008**, 128(2), 323-329
- [29] Y.C. Hsiung, Y.A. Chen, S.Y. Chen, W.C. Chi, R.H. Lee, T.Y. Chiang and H.J. Huang, 'Volatilized myrcene inhibits growth and activates defense responses in rice roots', *Acta physiologiae plantarum*, **2013**, 35(8), 2475-2482.
- [30] L. Zamponi, M. Michelozzi and P. Capretti, 'Effects of four monoterpenes on the growth in vitro of some Heterobasidion spp. and two Leptographium species', *Journal of Plant Diseases and Protection*, **2006**, 113(4), 164-167
- [31] M. Michelozzi, 'Defensive roles of terpenoid mixtures in conifers', *Acta botanica gallica*, **1999**, 146(1), pp.73-84
- [32] R. C. Silva, J. S. da Costa, R. O. de Figueiredo, W. N. Setzer, J. K. R. da Silva, J. G. S. Maia, P. L. B. Figueiredo, 'Monoterpenes and Sesquiterpenes of Essential Oils from *Psidium* Species and Their Biological Properties', *Molecules* 2021, 26, DOI 10.3390/molecules26040965.
- [33] H. M. Hashiesh, C. Sharma, S. N. Goyal, B. Sadek, N. K. Jha, J. Al Kaabi, S. Ojha, 'A focused review on CB2 receptor-selective pharmacological properties and therapeutic potential of  $\beta$ -caryophyllene, a dietary cannabinoid', *Biomed. Pharmacother.* **2021**, 140, 111639.
- [34] H. Ullah, A. Di Minno, C. Santarcangelo, H. Khan, M. Daglia, 'Improvement of Oxidative Stress and Mitochondrial Dysfunction by  $\beta$ -Caryophyllene: A Focus on the Nervous System', *Antioxidants* 2021, 10, DOI 10.3390/antiox10040546.
- [35] M. Liu, W. Niu, L. Ou, ' $\beta$ -Caryophyllene ameliorates the Mycoplasmal pneumonia through the inhibition of NF- $\kappa$ B signal transduction in mice', *Saudi J. Biol. Sci.* **2021**, 28, 4240–4246.
- [36] M.J. Salvador, J.E. Carvalho, A. Wisniewski-Jr, C.A.L. Kassuya, E.P. Santos, D.Riva, M.E.A. Stefanello, 'Chemical composition and cytotoxic activity of the essential oil from the leaves of *Casearia lasiophylla*', *Braz. J. Pharmacogn.* 2011, 21, 864-868.
- [37] R. Scandiffio, F. Geddo, E. Cottone, G. Querio, S. Antoniotti, M. P. Gallo, M. E. Maffei, P. Bovolin, 'Protective Effects of (E)- $\beta$ -Caryophyllene (BCP) in Chronic Inflammation', *Nutrients* 2020, 12, DOI 10.3390/nu12113273.
- [38] M. G. Miguel, 'Antioxidant and Anti-Inflammatory Activities of Essential Oils: A Short Review', *Molecules* 2010, 15, DOI 10.3390/molecules15129252.
- [39] R.C. Dutra, M.B. Fava, C.S.C. Alves, A.P. Ferreira, N.R. Barbosa, 'Antiulcerogenic and antiinflammatory activities of the essential oil from *Pterodon emarginatus* seeds'. *J. Pharm. Pharmacol.* **2009**, 61, 243-250
- [40] R. de Cássia Da Silveira e Sá, L. N. Andrade, D. P. De Sousa, 'Sesquiterpenes from essential oils and anti-inflammatory activity', *Nat. Prod. Commun.* **2015**, 10, 1934578X1501001033.
- [41] M. Chandra, O. Prakash, R. Kumar, R. K. Bachheti, B. Bhushan, M. Kumar, A. K. Pant, ' $\beta$ -Selinene-Rich Essential Oils from the Parts of *Callicarpa macrophylla* and Their Antioxidant and Pharmacological Activities', *Medicines* 2017, 4, DOI 10.3390/medicines4030052.
- [42] A. D. Adeyemi, C. C. Oluigbo, A. O. Esan, M. O. Bello, S. O. Oladoye, C. P. Emmanuel, E. Effiong, 'Chemical composition and antimicrobial activity of the essential oils of 14 known ficus species – a concise review', *Biointerface Res. Appl. Chem.* **2022**, 12, 8003–8034.
- [43] A. Harizia, A. Benguerai, A. Elouissi, T. Mahi, R. Bonal, 'Chemical composition and biological activity of *Salvia officinalis* L. essential oil against *Aphis fabae* Scopoli (Hemiptera: Aphididae)', *J. Plant Dis. Prot.* **2021**, 128, 1547–1556.
- [44] N. Beccari, V. Mazzi, *Manuale Di Tecnica Microscopica*, Società Editrice Libreria., 1966.
- [45] M. C. Brundrett, B. Kendrick, C. A. Peterson, 'Efficient lipid staining in plant material with Sudan Red 7B or Fluoral Yellow 088 in polyethylene glycol-glycerol', *Biotech. Histochem.* **1991**, 66, 111–116.
- [46] P. Greenspan, E. P. Mayer, S. D. Fowler, 'Nile red: a selective fluorescent stain for intracellular lipid droplets.', *J. Cell Biol.* **1985**, 100, 965–973.
- [47] R. David, J. P. Carde, R. David, 'Histochimie-coloration differentielle des inclusions lipidiques et terpeniques des pseudophylles du pin maritime au moyen du reactif NADI', *C. R. Biol.* **1964**, 258, 1338–1340.
- [48] W. A. Jensen, *Botanical Histochemistry: Principles and Practice*, San Francisco, 1962.
- [49] P. B. Gahan, *Plant Histochemistry and Cytochemistry*, Academic Press, London, 1984.

## Chem. Biodiversity

## Table of Contents



The vegetative and reproductive organs of *Teucrium fruticans* L. are covered by a glandular *indumentum* composed of five different trichomes morphotypes: peltates and medium-stalked capitates are the main terpene sites of the essential oil production.