

LETTER OPEN



MYELODYSPLASTIC NEOPLASM

Long-term utilization and benefit of luspatercept in transfusion-dependent, erythropoiesis-stimulating agent-refractory or -intolerant patients with lower-risk myelodysplastic syndromes with ring sideroblasts

Uwe Platzbecker^{1✉}, Valeria Santini², Rami S. Komrokji³, Amer M. Zeidan⁴, Guillermo Garcia-Manero⁵, Rena Buckstein⁶, Dimana Miteva⁷, Karen Keeperman⁸, Natalia Holot⁸, Jose Alberto Nadal⁷, Yinzhi Lai⁸, Sadanand Vodala⁸, Barbara Rosettani⁷, Ana Carolina Giuseppi⁸, Aylin Yuce⁸ and Pierre Fenau⁹

© The Author(s) 2023

Leukemia; <https://doi.org/10.1038/s41375-023-02031-7>

TO THE EDITOR:

Myelodysplastic syndromes (MDS) are disorders of hematopoietic stem cells characterized by ineffective hematopoiesis, commonly leading to anemia [1]. The main goals in the treatment of lower-risk MDS (LR-MDS) are to manage anemia, improve or maintain quality of life (QoL), and delay disease progression to higher-risk MDS (HR-MDS) and acute myeloid leukemia (AML) [1, 2]. Chronic anemia in LR-MDS is associated with increased mortality and morbidity rates [3, 4].

Regular red blood cell (RBC) transfusions are used to manage LR-MDS-associated anemia despite their association with poorer QoL and significant cost; long-term RBC transfusions can lead to iron overload [1]. Erythropoiesis-stimulating agents (ESAs) are first-line therapy to treat anemia in patients with LR-MDS with serum erythropoietin (EPO) levels ≤ 500 U/l and low transfusion burden [2, 5]. However, the median duration of response to ESAs is 6–19 months, and >67% of patients with LR-MDS are, or become, refractory to ESAs after exposure [6, 7].

Luspatercept, a first-in-class erythroid maturation agent, was approved by the US Food and Drug Administration and European Medicines Agency to treat anemia in transfusion-dependent patients with ring sideroblast (RS)-positive LR-MDS who are refractory/intolerant to ESAs, following the phase 3 MEDALIST study (NCT02631070) [8–10]. A greater proportion of patients treated with luspatercept than placebo experienced RBC transfusion independence (RBC-TI) ≥ 8 weeks and RBC-TI ≥ 16 weeks during weeks 1–24 and 1–48 [8, 11]. The most common treatment-emergent adverse events (TEAEs) associated with ≤ 48 weeks of luspatercept treatment included fatigue, diarrhea, asthenia, nausea, and dizziness [8]; except for dizziness and diarrhea, the exposure-adjusted rates were either comparable

with placebo or lower in the luspatercept arm [12]. Four patients (3 receiving luspatercept) progressed to AML during the study [8]. Luspatercept efficacy beyond 48 weeks and its impact on overall survival (OS) have not been reported. Here we present over 2 years of additional safety and efficacy data with concomitant impact on OS for MEDALIST trial patients.

The phase 3, double-blind, placebo-controlled MEDALIST trial [8] evaluated luspatercept for treatment of anemia in adults with Revised International Prognostic Scoring System [13] Very low-, Low-, or Intermediate-risk RS-positive MDS, who were refractory, intolerant, or unlikely to respond to ESAs, and were receiving regular RBC transfusions. Patients were randomized 2:1 to luspatercept (1.0 mg/kg up to 1.75 mg/kg) or placebo, administered subcutaneously every 3 weeks. The primary endpoint was RBC-TI for ≥ 8 weeks during weeks 1–24. Following completion of the study, patients who continued to benefit from luspatercept were eligible to enter long-term follow-up and remained on their prior dose and schedule regime. Patients receiving placebo received supportive care during follow-up. This analysis presents pooled data from two data cutoffs: November 26, 2020 (MEDALIST final parent protocol data cutoff) and January 15, 2021 (long-term follow-up data cutoff).

Baseline characteristics for MEDALIST patients (previously reported [8]) are included in Supplementary Table S1. At the last cutoff, the median follow-up time for patients in the luspatercept arm was 39.9 months (vs. 38.4 months for placebo), and the median duration of treatment was 11.70 months (vs. 5.52 months for placebo; Fig. 1A).

During the entire treatment period (as of January 15, 2021), RBC-TI ≥ 8 weeks was experienced by 74 of 153 (48.4%) patients receiving luspatercept and 12 of 76 (15.8%) patients receiving placebo

¹Medical Clinic and Policlinic 1, Hematology and Cellular Therapy, University Hospital Leipzig, Leipzig, Germany. ²MDS Unit, AOU Careggi, University of Florence, Florence, Italy. ³Moffitt Cancer Center, Tampa, FL, USA. ⁴Department of Internal Medicine, Yale School of Medicine and Yale Cancer Center, Yale University, New Haven, CT, USA. ⁵Department of Leukemia, The University of Texas MD Anderson Cancer Center, Houston, TX, USA. ⁶Odette Cancer Centre, Sunnybrook Health Sciences Centre, Toronto, ON, Canada. ⁷Celgene International Sàrl, a Bristol-Myers Squibb Company, Boudry, Switzerland. ⁸Bristol Myers Squibb, Princeton, NJ, USA. ⁹Service d'Hématologie Séniors, Hôpital Saint-Louis, Assistance Publique-Hôpitaux de Paris and Université Paris 7, Paris, France. ✉email: uwe.platzbecker@medizin.uni-leipzig.de

Received: 7 April 2023 Revised: 1 September 2023 Accepted: 7 September 2023

Published online: 26 September 2023

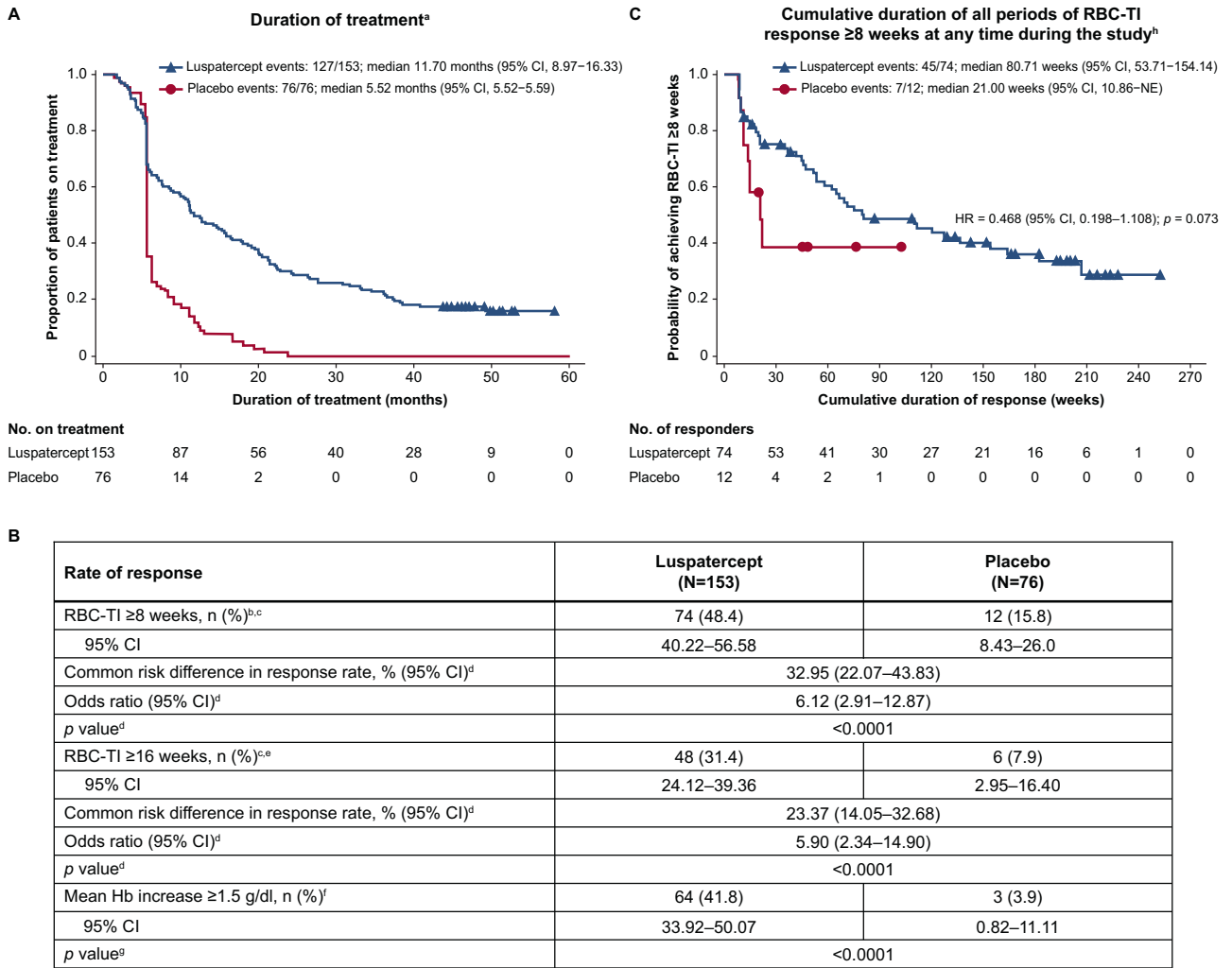


Fig. 1 Duration of treatment, cumulative duration of RBC-TI ≥8 weeks response, and rates of achievement of RBC-TI ≥8 weeks and ≥16 weeks, and mean Hb increase ≥1.5 g/dl. **A** Duration of treatment during the entire treatment period. **B** Rate of achievement of RBC-TI ≥8 weeks and ≥16 weeks, and mean Hb increase ≥1.5 g/dl during the entire treatment period. **C** Cumulative duration of all periods of RBC-TI response ≥8 weeks at any time during the study. ^aTreatment end date is defined as the last dose date +20 days, study discontinuation date, cutoff date or death date, whichever is earlier. ^bResponse is defined as the absence of any RBC transfusion during any consecutive 56-day period during the entire treatment period. ^cResponse rate (%) was calculated using the number of responders divided by the number of patients multiplied by 100. ^dCochran-Mantel-Haenszel test stratified for average baseline RBC transfusion requirement (≥6 units vs. <6 units of RBC per 8 weeks) and baseline IPSS-R score (Very low or Low vs. Intermediate). ^eResponse is defined as the absence of any RBC transfusion during any consecutive 112-day period during the entire treatment period. ^fDefined as the proportion of patients with a Hb increase ≥1.5 g/dl compared with baseline that was sustained over any consecutive 56-day period in the absence of RBC transfusions. ^gFisher exact test comparing the luspaterecept arm with the placebo arm. ^hThe cumulative duration of all periods of RBC-TI response ≥8 weeks is defined as the sum of all durations of non-consecutive periods of RBC-TI response ≥8 weeks for patients during the entire treatment phase. ⁱMedian is from the Kaplan–Meier method. CI confidence interval, Hb hemoglobin, HR hazard ratio, IPSS-R Revised International Prognostic Scoring System, NE not estimable, RBC red blood cell, RBC-TI RBC transfusion independence.

(*p* < 0.0001; Fig. 1B). Kaplan–Meier estimates of the cumulative duration of all periods of RBC-TI ≥8 weeks response, even if non-consecutive, for patients at any time during the study were 80.71 (95% confidence interval [CI]: 53.71–154.14) weeks with luspaterecept and 21.00 (95% CI: 10.86–not estimable [NE]) weeks with placebo (hazard ratio [HR]: 0.468 [95% CI: 0.198–1.108]; *p* = 0.073; Fig. 1C). RBC-TI ≥16 weeks was experienced by 48 of 153 (31.4%) and 6 of 76 (7.9%) patients treated with luspaterecept and placebo (*p* < 0.0001), respectively (Fig. 1B). Overall, 64 of 153 (41.8%) patients receiving luspaterecept experienced a mean increase in hemoglobin (Hb) ≥1.5 g/dl in the absence of any RBC transfusions compared with 3 of 76 (3.9%) patients receiving placebo (*p* < 0.0001; Fig. 1B).

Overall rates of progression to HR-MDS and AML were low in both treatment arms: 9 of 153 (5.9%) patients receiving luspaterecept and 3 of 76 (3.9%) of those receiving placebo

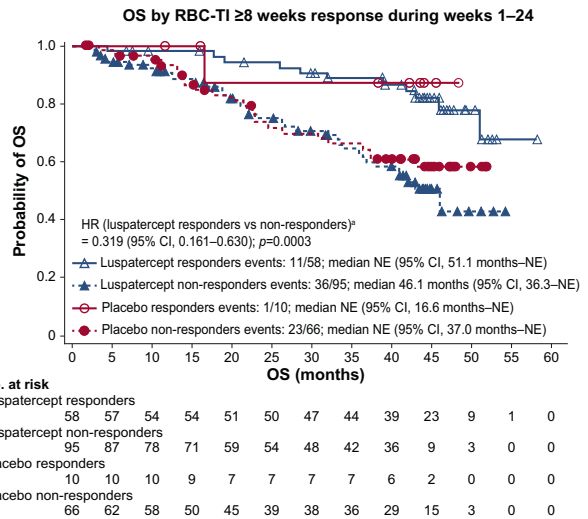
progressed to HR-MDS, and 4 of 153 (2.6%) and 3 of 76 (3.9%) patients treated with luspaterecept and placebo, respectively, progressed to AML. Follow-up time adjusted incidence rates of progression to HR-MDS per 100 person-years were 2.22 (95% CI: 1.16–4.27) and 1.55 (95% CI: 0.50–4.82) for patients treated with luspaterecept and placebo, and 0.97 (95% CI: 0.37–2.60) and 1.52 (95% CI: 0.49–4.72), respectively, for patients who progressed to AML (Supplementary Table S2). Baseline characteristics of the 7 patients who progressed to AML are reported in Supplementary Table S3. No patients receiving luspaterecept who progressed to AML also progressed to HR-MDS, compared with 1 patient receiving placebo who progressed to both HR-MDS and AML.

As of January 15, 2021, 106 of 153 (69.3%) patients treated with luspaterecept and 52 of 76 (68.4%) treated with placebo were alive (Fig. 2A); the median duration of OS was not reached by patients

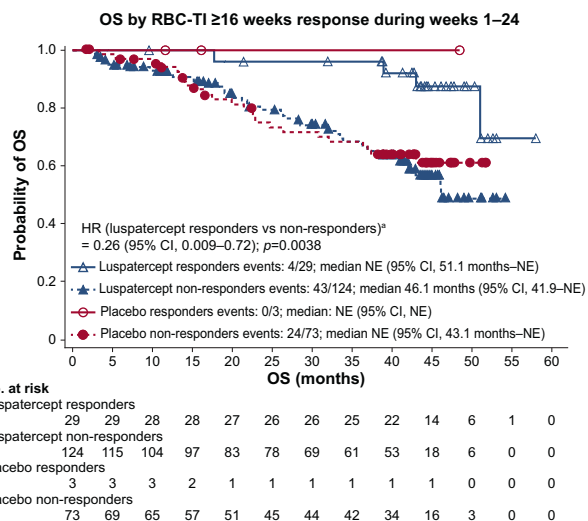
A

	Luspatercept (N=153)		Placebo (N=76)	
Patients alive, censored, n (%)	106 (69.3)		52 (68.4)	
Follow-up time, median months (range)	39.9 (2.8–58.1)		38.4 (1.7–51.8)	
RBC-TI ≥8 weeks response during weeks 1–24				
	Luspatercept		Placebo	
	Responders (n=58)	Non-responders (n=95)	Responders (n=10)	Non-responders (n=66)
Patients alive, censored, n (%)	47 (81.0)	59 (62.1)	9 (90.0)	43 (65.2)
Follow-up time, median months (range)	44.0 (4.4–58.1)	31.2 (2.8–54.1)	42.8 (11.6–48.4)	37.7 (1.7–51.8)
Survival probability at month 40 (95% CI)	86.6 (73.9–93.4)	58.7 (46.4–69.1)	87.5 (38.7–98.1)	61.0 (46.9–72.4)
RBC-TI ≥16 weeks response during weeks 1–24				
	Luspatercept		Placebo	
	Responders (n=29)	Non-responders (n=124)	Responders (n=3)	Non-responders (n=73)
Patients alive, censored, n (%)	25 (86.2)	81 (65.3)	3 (100.0)	49 (67.1)
Follow-up time, median months (range)	44.4 (9.5–58.1)	33.6 (2.8–54.1)	16.1 (11.6–48.4)	38.6 (1.7–51.8)
Survival probability at month 40 (95% CI)	92.4 (72.8–98.1)	64.4 (54.0–73.0)	100.0 (100.0–100.0)	63.8 (50.6–74.3)
Hb increase ≥1.5 g/dL response during weeks 1–24				
	Luspatercept		Placebo	
	Responders (n=47)	Non-responders (n=106)	Responders (n=2)	Non-responders (n=74)
Patients alive, censored, n (%)	40 (85.1)	66 (62.3)	2 (100.0)	50 (67.6)
Follow-up time, median months (range)	43.6 (6.7–58.1)	33.3 (2.8–54.1)	45.3 (42.1–48.4)	38.2 (1.7–51.8)
Survival probability at month 40 (95% CI)	87.8 (72.9–94.7)	61.8 (50.5–71.3)	100.0 (100.0–100.0)	63.4 (50.1–74.0)

B



C



D

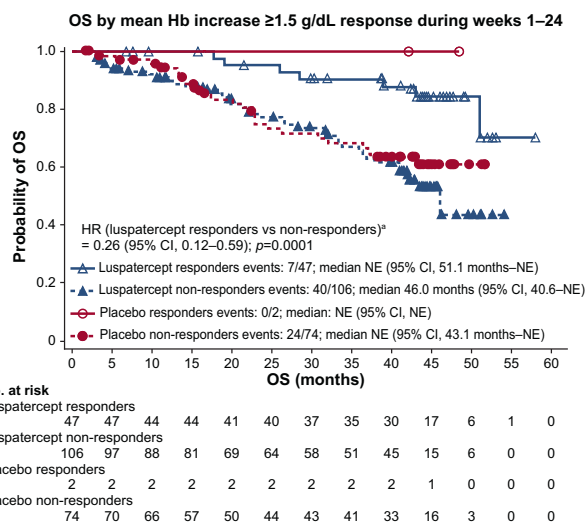


Fig. 2 OS by RBC-TI ≥8 weeks response, RBC-TI ≥16 weeks response, and mean Hb increase ≥1.5 g/dL response. A Summary of OS. B OS by RBC-TI ≥8 weeks response during weeks 1–24. C OS by RBC-TI ≥16 weeks response during weeks 1–24. D OS by mean Hb increase ≥1.5 g/dL response during weeks 1–24. OS is calculated as the time from randomization date to death of any cause and is censored at the last date that the patient was known to be alive for patients who were alive at the time of analysis and for patients who discontinued from the study or were lost to follow-up. ^aUnstratified HR and log-rank test p value. CI confidence interval, Hb hemoglobin, HR hazard ratio, NA not applicable, NE not estimable, OS overall survival, RBC-TI red blood cell transfusion independence, SD standard deviation.

receiving luspatercept (95% CI: 46.1 months–NE) nor placebo (95% CI: 43.1 months–NE; Supplementary Fig. S1). Response to luspatercept during weeks 1–24 of the MEDALIST study was associated with longer OS. Of the 58 patients receiving luspatercept who experienced RBC-TI ≥ 8 weeks, 47 (81.0%) were alive compared with 59 of 95 (62.1%) patients who did not (Fig. 2A). The median duration of OS for luspatercept responders who experienced RBC-TI ≥ 8 weeks was not reached (95% CI: 51.1 months–NE) and was 46.1 (95% CI: 36.3–NE) months for non-responders (HR: 0.32 [95% CI: 0.16–0.63]; $p = 0.0003$; Fig. 2B). Of the 29 patients receiving luspatercept who experienced RBC-TI ≥ 16 weeks, 25 (86.2%) were alive compared with 81 of 124 (65.3%) patients who did not (Fig. 2A). The median duration of OS for luspatercept patients who experienced RBC-TI ≥ 16 weeks not reached (95% CI: 51.1 months–NE) compared with 46.1 (95% CI: 41.9–NE) months for non-responders (HR: 0.26 [95% CI: 0.09–0.72]; $p = 0.0038$; Fig. 2C). Of the 47 patients treated with luspatercept who experienced a mean Hb increase ≥ 1.5 g/dl in the absence of RBC transfusions, 40 (85.1%) were alive versus 66 of 106 (62.3%) patients who did not (Fig. 2A). The median duration of OS for patients receiving luspatercept who experienced a mean Hb increase ≥ 1.5 g/dl was not reached (95% CI: 51.1 months–NE) and was 46.0 (95% CI: 40.6–NE) months for non-responders (HR: 0.26 [95% CI: 0.12–0.59]; $p = 0.0005$; Fig. 2D).

We report that patients on the MEDALIST study continue to benefit from long-term luspatercept treatment over 2 years, with a median follow-up time of 39.9 months (vs. 38.4 months for placebo) compared with 26.4 months (vs. 26.1 months for placebo) from a previous report of longer-term luspatercept clinical benefit [11]. Compared to the first 24 weeks of the MEDALIST study [8], a greater proportion of patients who continued luspatercept treatment long-term experienced RBC-TI ≥ 8 weeks (48% vs. 38%) and RBC-TI ≥ 16 weeks (31% vs. 19%). The median longest duration of RBC-TI ≥ 8 weeks response in the primary MEDALIST analysis was 30.6 weeks [8]. In the current analysis, the median cumulative duration of RBC-TI response with luspatercept treatment was 80.7 weeks, consistent with the previous finding that 79% of MEDALIST primary endpoint responders experienced multiple separate RBC-TI ≥ 8 weeks response periods [12]. Taken together, these data demonstrate that patients continue to benefit from luspatercept beyond the first 24-week assessment period.

The MEDALIST study was not powered for an analysis of OS, however, this long-term analysis shows that, while median OS duration was similar between the luspatercept and placebo arms, achievement of response (RBC-TI ≥ 8 weeks, RBC-TI ≥ 16 weeks, or a mean Hb increase ≥ 1.5 g/dl during weeks 1–24) was associated with longer OS. One-quarter to one-third of LR-MDS cases will progress to AML [14]. In the primary MEDALIST analysis, 4 (1.7%) patients progressed to AML (including 3 [2.0%] patients receiving luspatercept) and 1 patient in each arm progressed to HR-MDS [8]. In the current analysis, rates of AML progression were similarly low, with 4 (2.6%) patients in the luspatercept arm and 3 (3.9%) in the placebo arm progressing to AML. Of note, patients who received luspatercept had a longer median time to AML progression from original MDS diagnosis versus placebo (61.70 vs. 32.69 months). Rates of HR-MDS progression were also low, with 9 (5.9%) patients receiving luspatercept and 3 (3.9%) receiving placebo progressing to HR-MDS. No new safety concerns with long-term luspatercept administration were identified in the current analysis.

In conclusion, these data demonstrated that long-term luspatercept treatment of transfusion-dependent anemia in patients with RS-positive LR-MDS provided sustained clinical benefit with a predictable safety profile, and RBC-TI ≥ 8 weeks, RBC-TI ≥ 16 weeks, and/or an increase in Hb ≥ 1.5 g/dl during the first 24 weeks of treatment was associated with improved OS among ESA-intolerant/refractory patients with RS-positive LR-MDS.

DATA AVAILABILITY

BMS policy on data sharing may be found at <https://www.bms.com/researchers-and-partners/independent-research/data-sharing-request-process.html>.

REFERENCES

- Fenaux P, Platzbecker U, Ades L. How we manage adults with myelodysplastic syndrome. *Br J Haematol*. 2020;189:1016–27.
- Platzbecker U. Treatment of MDS. *Blood*. 2019;133:1096–107.
- Malcovati L, Della Porta MG, Cazzola M. Predicting survival and leukemic evolution in patients with myelodysplastic syndrome. *Haematologica*. 2006;91:1588–90.
- Oliva EN, Schey C, Hutchings AS. A review of anemia as a cardiovascular risk factor in patients with myelodysplastic syndromes. *Am J Blood Res*. 2011;1:160–6.
- Carraway HE, Saygin C. Therapy for lower-risk MDS. *Hematology Am Soc Hematol Educ Program*. 2020;2020:426–33.
- Park S, Greenberg P, Yucel A, Farmer C, O'Neill F, De Oliveira Brandao C, et al. Clinical effectiveness and safety of erythropoietin-stimulating agents for the treatment of low- and intermediate-1-risk myelodysplastic syndrome: a systematic literature review. *Br J Haematol*. 2019;184:134–60.
- Park S, Hamel J-F, Toma A, Kelaidi C, Thépot S, Diez Campelo M, et al. Outcome of lower-risk patients with myelodysplastic syndromes without 5q deletion after failure of erythropoiesis-stimulating agents. *J Clin Oncol*. 2017;35:1591–7.
- Fenaux P, Platzbecker U, Mufti GJ, Garcia-Manero G, Buckstein R, Santini V, et al. Luspatercept in patients with lower-risk myelodysplastic syndromes. *N Engl J Med*. 2020;382:140–51.
- Reblozyl (luspatercept-aamt) [prescribing information]. Princeton, NJ: Celgene Corporation. Revised April 2020. https://www.accessdata.fda.gov/drugsatfda_docs/label/2020/761136orig2lbl.pdf. Accessed May 2022.
- Reblozyl (luspatercept) [summary of product characteristics]. Utrecht, Netherlands: Celgene Distribution B.V. Revised September 2021. https://www.ema.europa.eu/en/documents/product-information/reblozyl-epar-product-information_en.pdf. Accessed May 2022.
- Zeidan AM, Platzbecker U, Garcia-Manero G, Sekeres MA, Fenaux P, DeZern AE, et al. Longer-term benefit of luspatercept in transfusion-dependent lower-risk myelodysplastic syndromes with ring sideroblasts. *Blood*. 2022;140:2170–4.
- Platzbecker U, Santini V, Komrokji RS, Zeidan AM, Garcia-Manero G, Buckstein RJ, et al. Analysis of duration of response, exposure-adjusted safety and progression to acute myeloid leukemia (AML) for patients with lower-risk myelodysplastic syndromes (LR-MDS) receiving luspatercept in the MEDALIST study. Abstracts from the 65th American Society of Hematology (ASH) Annual Meeting and Exposition. *Blood*. 2021;138:1524.
- Greenberg PL, Tuechler H, Schanz J, Sanz G, Garcia-Manero G, Solé F, et al. Revised international prognostic scoring system for myelodysplastic syndromes. *Blood*. 2012;120:2454–65.
- Fenaux P, Haase D, Santini V, Sanz GF, Platzbecker U, Mey U, et al. Myelodysplastic syndromes: ESMO Clinical Practice Guidelines for diagnosis, treatment and follow-up. *Ann Oncol*. 2021;32:142–56.

ACKNOWLEDGEMENTS

The authors thank all the patients, families, and investigators who participated in the study. This study was supported by Celgene, a Bristol-Myers Squibb Company, in collaboration with Acceleron Pharma Inc., a subsidiary of Merck & Co., Inc., Rahway, NJ, USA. The authors received editorial and writing support from James Matthews, PhD, from Excerpta Medica, funded by Bristol Myers Squibb. The authors are fully responsible for all content and editorial decisions for this manuscript.

AUTHOR CONTRIBUTIONS

UP, VS, AMZ, RB, DM, JAN, and PF conceived and designed the study. UP, VS, RSK, AMZ, GG-M, RB, and PF participated in patient enrollment. YL collected and assembled the data. DM, BR, ACG, and AY analyzed and interpreted the data. All authors wrote the manuscript, gave final approval of the manuscript and are accountable for all aspects of the work.

FUNDING

Open Access funding enabled and organized by Projekt DEAL.

COMPETING INTERESTS

UP has received grant support from Amgen, Janssen, Merck, and Novartis; grant and travel support, and lecture, steering committee, and consulting fees, and travel

support from Celgene/BMS; and lecture fees from Novartis. VS has received honoraria and advisory board fees from BMS, travel support from Janssen, and advisory board fees from AbbVie, Geron, Gilead, Menarini, Novartis, Servier Pharmaceuticals, and Syros. RSK has received consulting and advisory board fees from Geron; speaker and advisory board fees from AbbVie, CTI BioPharma, Jazz Pharmaceuticals, PharmaEssentia, and Servier Pharmaceuticals; advisory board fees from Novartis, Rigol Pharmaceuticals, and Taiho Pharma; and funding and advisory board fees from BMS. AMZ has received consulting fees, research funding, honoraria, and travel support from Cardiff Oncology, Novartis, and Pfizer; consulting fees, research funding, and honoraria from AbbVie, Amgen, Aprea, Boehringer-Ingelheim, Celgene/BMS, Incyte, Otsuka, Takeda, and Trovogene; consulting fees, and honoraria from Acceleron Pharma, Agios, Astellas, BeyondSpring, Cardinal Health, Daiichi Sankyo, Epizyme, Geron, Gilead, Ionis Pharmaceuticals, Janssen, Jazz Pharmaceuticals, Kura Oncology, Seattle Genetics, Syndax, Taiho Pharma, Tyme; research funding from ADC Therapeutics, Astex Pharmaceuticals, AstraZeneca, and Medimmune. GG-M has received research funding from BMS. RB has received research funding and honoraria from BMS, and Taiho Pharma, and honoraria from AbbVie. DM, NH, BR, and AY are currently employed by BMS. JAN is currently employed by BMS, is a current holder of individual stocks in a privately held company, and a current holder of BMS stock options. KK is currently employed by, is a current holder of BMS stock options, and is a current holder of Pfizer stock options. YL, ACG, and SV are currently employed by, and current holders of BMS stock options. PF has received consulting fees, research funding, and honoraria from BMS.

ADDITIONAL INFORMATION

Supplementary information The online version contains supplementary material available at <https://doi.org/10.1038/s41375-023-02031-7>.

Correspondence and requests for materials should be addressed to Uwe Platzbecker.

Reprints and permission information is available at <http://www.nature.com/reprints>

Publisher's note Springer Nature remains neutral with regard to jurisdictional claims in published maps and institutional affiliations.



Open Access This article is licensed under a Creative Commons Attribution 4.0 International License, which permits use, sharing, adaptation, distribution and reproduction in any medium or format, as long as you give appropriate credit to the original author(s) and the source, provide a link to the Creative Commons licence, and indicate if changes were made. The images or other third party material in this article are included in the article's Creative Commons licence, unless indicated otherwise in a credit line to the material. If material is not included in the article's Creative Commons licence and your intended use is not permitted by statutory regulation or exceeds the permitted use, you will need to obtain permission directly from the copyright holder. To view a copy of this licence, visit <http://creativecommons.org/licenses/by/4.0/>.

© The Author(s) 2023