



## Effect of amino acids and amines on the activity of the recombinant L-carbonic anhydrase from the Gram-negative bacterium *Burkholderia territorii*

Viviana De Luca, Andrea Petreni, Vincenzo Carginale, Andrea Scaloni, Claudiu T. Supuran & Clemente Capasso

To cite this article: Viviana De Luca, Andrea Petreni, Vincenzo Carginale, Andrea Scaloni, Claudiu T. Supuran & Clemente Capasso (2021) Effect of amino acids and amines on the activity of the recombinant L-carbonic anhydrase from the Gram-negative bacterium *Burkholderia territorii*, Journal of Enzyme Inhibition and Medicinal Chemistry, 36:1, 1000-1006, DOI: [10.1080/14756366.2021.1919891](https://doi.org/10.1080/14756366.2021.1919891)

To link to this article: <https://doi.org/10.1080/14756366.2021.1919891>



© 2021 The Author(s). Published by Informa UK Limited, trading as Taylor & Francis Group.



Published online: 13 May 2021.



[Submit your article to this journal](#)



Article views: 1409



[View related articles](#)



[View Crossmark data](#)





Citing articles: 5 [View citing articles](#)

RESEARCH PAPER



## Effect of amino acids and amines on the activity of the recombinant $\iota$ -carbonic anhydrase from the Gram-negative bacterium *Burkholderia territorii*

Viviana De Luca<sup>a,b</sup>, Andrea Petreni<sup>c</sup>, Vincenzo Carginale<sup>a</sup>, Andrea Scaloni<sup>b</sup>, Claudiu T. Supuran<sup>c</sup>  and Clemente Capasso<sup>a</sup> 

<sup>a</sup>Department of Neurofarba, Sezione di Scienze Farmaceutiche, Università degli Studi di Firenze, Polo Scientifico, Florence, Italy; <sup>b</sup>Proteomics & Mass Spectrometry Laboratory, Institute for the Animal Production System in the Mediterranean Environment, CNR, Naples, Italy; <sup>c</sup>Department of Biology, Agriculture and Food Sciences, CNR, Institute of Biosciences and Bioresources, Napoli, Italy

### ABSTRACT

We here report a study on the activation of the  $\iota$ -class bacterial CA from *Burkholderia territorii* (BteCA $\iota$ ). This protein was recently characterised as a zinc-dependent enzyme that shows a significant catalytic activity ( $k_{\text{cat}} 3.0 \times 10^5 \text{ s}^{-1}$ ) for the physiological reaction of CO $_2$  hydration to bicarbonate and protons. Some amino acids and amines, among which some proteinogenic derivatives as well as histamine, dopamine and serotonin, showed efficient activating properties towards BteCA $\iota$ , with activation constants in the range 3.9–13.3  $\mu\text{M}$ . L-Phe, L-Asn, L-Glu, and some pyridyl-alkylamines, showed a weaker activating effect towards BteCA $\iota$ , with  $K_A$  values ranging between 18.4  $\mu\text{M}$  and 45.6  $\mu\text{M}$ . Nowadays, no information is available on active site architecture, metal ion coordination and catalytic mechanism of members of the  $\iota$ -group of CAs, and this study represents another contribution towards a better understanding of this still uncharacterised class of enzymes.

### ARTICLE HISTORY

Received 15 March 2021  
Revised 12 April 2021  
Accepted 15 April 2021

### KEYWORDS





Carbonic anhydrase;  $\iota$ -class; activator; kinetics; amino acid; amine

## 1. Introduction

Enzyme activation implies that a chemical compound binding to an enzyme favourably affects the corresponding catalysed reaction rate<sup>1</sup>. Among the activators, worth mentioning are ions, small organic molecules (amines and amino acids, but also other derivatives), as well as peptides, proteins, and lipids<sup>1,2</sup>. Enzyme activation is classified as essential and non-essential. In the first case, the enzymatic reaction occurs only when the activator is present; in the second case, the catalysed reaction takes place with or without the activator<sup>3,4</sup>. Enzymatic reactions using ATP as substrate, such as those catalysed by kinases, are an excellent example of processes undergoing enzyme activation<sup>5</sup>. The suitable substrate for these biocatalysts is the complex formed by ATP and Mg<sup>2+</sup> (the ion acting as activator), and the reaction does not take place when Mg<sup>2+</sup> is absent and ATP is present<sup>5</sup>. In contrast, an elegant and well-described example of non-essential activation is represented by the superfamily of carbonic anhydrases (CAs, EC 4.2.1.1), which are widely investigated by us and others as drug targets<sup>6–13</sup>. These enzymes are involved in the catalysis of a pivotal physiological reaction, the reversible hydration of carbon dioxide to bicarbonate and protons<sup>10,13–18</sup>. Members of the CA superfamily are grouped into eight classes ( $\alpha$ ,  $\beta$ ,  $\gamma$ ,  $\delta$ ,  $\zeta$ ,  $\eta$ ,  $\theta$  and  $\iota$ ) according to their structural characteristics, and are distributed in all living organisms, starting from microorganisms to multicellular plants/animals<sup>13–17</sup>. For example, mammalian genomes encode only for numerous isoforms of the  $\alpha$ -CA class and accomplish specialised functions in various tissues and organs<sup>19–23</sup>. In plants,  $\alpha$ - and  $\beta$ -CAs have an essential role in photosynthesis and

biosynthetic reactions related to it<sup>9</sup>. In simpler organisms, such as bacteria, Archaea and cyanobacteria,  $\alpha$ -,  $\beta$ -,  $\gamma$ - and  $\iota$ -CAs are present, which have a role in balancing the [CO $_2$ ]/[HCO $_3^-$ ] ratio and the carbon dioxide fixation<sup>9–11,13,18,24</sup>. Marine diatoms encode for  $\alpha$ -,  $\delta$ -,  $\zeta$ -,  $\theta$ - and  $\iota$ -CAs, which are involved in carbon dioxide fixation and metabolism<sup>25–27</sup>. In addition to  $\alpha$ - and  $\beta$ -forms, protozoan species also expressed  $\eta$ -CAs. These enzymes are involved in *de novo* purine/pyrimidine biosynthetic pathways<sup>28</sup>. Finally, organisms of the fungal kingdom generally present enzymes of the  $\beta$ -class, which are present at least in one isoform<sup>29–31</sup>. Fungal CO $_2$ -sensing is directly stimulated by HCO $_3^-$ , which is produced in a CA-dependent manner<sup>31–34</sup>.

The most extensively investigated CA activators (CAAs) belong to the compound groups of amines and amino acids<sup>2</sup>. The X-ray crystal structure of the human isoforms (hCA I and II) bound to activators, such as histamine, L-/D-histidine, L-/D-phenylalanine, D-tryptophan and others, allowed the comprehension of the activation mechanism and the structure-activity relationship governing it<sup>2,35–41</sup>. Contrary to most CA inhibitors (CAIs), such as anions and sulphonamides<sup>6,9,10,42,43</sup> CAAs bind to molecular regions at the entrance of the enzyme active site enhancing the proton transfer processes between the Zn<sup>2+</sup>-bound water molecule and the reaction medium; this is accomplished by a supplementary pathway provided by the proton-shuttling moieties of the activator<sup>2,44</sup>. As a result, CAAs increase the rate of the enzyme-catalysed process speeding up the proton transfer, which is the rate-determining step of the whole reaction, thus enhancing the catalytic efficacy of these enzymes ( $k_{\text{cat}}$  up to  $10^6 \text{ s}^{-1}$ )<sup>2,44</sup>. In the literature, the

**CONTACT** Claudiu T. Supuran  [claudiu.supuran@unifi.it](mailto:claudiu.supuran@unifi.it)  Department of Biology, Agriculture and Food Sciences, CNR, Institute of Biosciences and Bioresources, Napoli, Italy; Clemente Capasso  [clemente.capasso@ibbr.cnr.it](mailto:clemente.capasso@ibbr.cnr.it)  Department of Neurofarba, Sezione di Scienze Farmaceutiche, Università degli Studi di Firenze, Polo Scientifico, Florence, Italy

© 2021 The Author(s). Published by Informa UK Limited, trading as Taylor & Francis Group.

This is an Open Access article distributed under the terms of the Creative Commons Attribution License (<http://creativecommons.org/licenses/by/4.0/>), which permits unrestricted use, distribution, and reproduction in any medium, provided the original work is properly cited.

modulation of CAs activity through activators is less described than that by inhibitors; the latter is well documented for its relevance in the pharmacological field<sup>20,42,45–48</sup>. Nevertheless, CAAs, such as D-phenylalanine and imidazole, have been recently proposed as neuroenhancement drugs possibly improving synaptic efficacy, spatial learning and memory<sup>2,49</sup>. Moreover, it has been demonstrated that CA levels are significantly decreased in the brain of patients with Alzheimer's disease (AD)<sup>8,50</sup>. These aspects corroborate the notion that CA modulators may have important applications in conditions in which individual learning and memory are impaired, such as aging or AD<sup>8,39,50,51</sup>. On the other hand, several CALs (coumarins and their isosteres) were proved inhibiting CAs by occluding the entrance of the active site cavity; interestingly, their binding sites coincided with those observed for various CAAs<sup>52</sup>. In this regard, it is evident that investigations on CAAs and studies on the structure-activity relationship governing their action could have the advantage to improve the general design of novel CAs modulators, which can mimic the activator binding mode but can have an opposite effect on the enzyme activity, as seen for coumarins<sup>52</sup>. This is an important issue also in another pharmacological context, since it has been shown that the interference with bacterial CA activity can impair the microorganism growth and virulence, making the CA inhibition an exciting approach to contrast the emergence of antibiotic resistance associated with many infections<sup>53</sup>.

In analogy with what already done with other CAs classes from mammals and fungi<sup>2,4,39,44,49,51,54,55</sup>, we carried out an extensive study of the activation properties of amines and amino acids towards a member of the recently discovered group of  $\iota$ -CAs. To this purpose, we investigated the effect of these CAAs on an enzyme identified in the genome of the non-pathogenic Gram-negative bacterium *Burkholderia territorii* recovered from groundwater samples (acronym BteCA $\iota$ )<sup>56</sup>. This study is the first characterisation of the activation of a CA belonging to the  $\iota$ -class.

## 2. Materials and methods

### 2.1. Reagents

Amines and amino acid derivatives **1–24** were obtained from Sigma-Aldrich (Milan, Italy) at the highest purity commercially available.

### 2.2. Cloning, production and purification of BteCA $\iota$

The protocol already developed and described by us<sup>57</sup>, involving enzyme cloning and expression in *Escherichia coli*, was here used to obtain a pure preparation of recombinant BteCA $\iota$ . Briefly, The synthetic *B. territorii* gene encoding for the BteCA $\iota$  was cloned into the expression vector pET100D-Topo/BteCA $\iota$  and used to transform the Competent *Escherichia coli* BL21 (DE3) codon plus cells (Agilent). The cellular culture was induced with Isopropyl  $\beta$ -D-1-thiogalactopyranoside (IPTG) to overexpress the recombinant BteCA $\iota$ . After the growth, the cells were harvested and disrupted by sonication. Cellular extract was purified using a nickel affinity column (His-Trap FF).

### 2.3. CA activation measurements

A Sx.18Mv-R Applied Photophysics (Oxford, UK) stopped-flow instrument was used to assay the CA-catalysed CO<sub>2</sub> hydration activity<sup>58</sup>. Phenol red (at a concentration of 0.2 mM) was used as an indicator, working at the absorbance maximum of 557 nm,

with 10 mM HEPES, pH 7.5 (for  $\alpha$ -CAs and BteCA $\iota$ )<sup>59,60</sup> or 10 mM TRIS, pH 8.3 (for  $\beta$ -CAs)<sup>61–64</sup> as buffers, containing 0.1 M NaClO<sub>4</sub> (for maintaining constant ionic strength), following the CA-catalysed CO<sub>2</sub> hydration reaction for a period of 10–100 s at 25 °C. The CO<sub>2</sub> concentrations ranged from 1.7 to 17 mM to determine the kinetic parameters and activation constants. For each activator, at least six traces of the initial 5–10% of the reaction were used to determine the initial velocity. The uncatalysed rates were determined in the same manner and subtracted from the total observed rates. Stock solutions of activators (at 0.1 mM concentration) were prepared in distilled-deionized water, and dilutions up to 1 nM were made thereafter with the assay buffer. Enzymes and activators were pre-incubated together for 15 min before the assay to allow the formation of the corresponding enzyme-activator complexes. The activation constant ( $K_A$ ) values, defined similarly to the inhibition constant counterparts, were obtained by considering the classical Michaelis-Menten equation (Equation (1)), which was fitted by the non-linear least squares method using PRISM 3, and represent the mean from at least three different determinations:

$$v = v_{\max} / \{1 + (K_M/[S])(1 + [A]_f/K_A)\} \quad (1)$$

where  $[A]_f$  is the free concentration of the activator.

Working at substrate concentrations considerably lower than  $K_M$  ( $[S] \ll K_M$ ), and considering that  $[A]_f$  can be represented in the form of the total concentration of the enzyme ( $[E]_t$ ) and activator ( $[A]_t$ ), the obtained competitive steady-state equation for determining the activation constant value is given by Equation (2):

$$v = v_0 \cdot K_A / \left\{ K_A + \left( [A]_t - 0.5 \left\{ ([A]_t + [E]_t + K_A) - \left( ([A]_t + [E]_t + K_A)^2 - 4[A]_t \cdot [E]_t \right)^{1/2} \right\} \right) \right\} \quad (2)$$

where  $v_0$  represents the initial velocity of the enzyme-catalysed reaction in the absence of activator<sup>61–64</sup>. This type of approach to measuring enzyme-ligand interactions is in excellent agreement with recent results from native mass spectrometry measurements<sup>65</sup>.

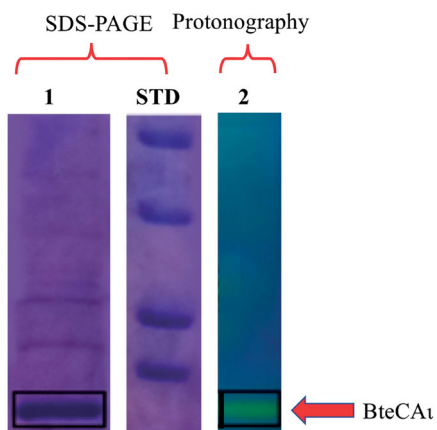
## 3. Results and discussion

### 3.1. Validation of BteCA $\iota$ activity

BteCA $\iota$  was heterologously expressed in *E. coli* and purified as already reported<sup>57</sup>. Enzyme preparation homogeneity, purity and *in gel* hydratase activity were verified using sodium dodecyl-sulfate-polyacrylamide gel electrophoresis (SDS-PAGE) and protonography, respectively (Figure 1).

The CO<sub>2</sub> hydratase activity and the kinetic constants of purified, recombinant BteCA $\iota$  were determined using the stopped-flow technique. Comparative experiments with human CA isoform I (hCA I) and isoform II (hCA II) were performed to relate results to well-known enzyme species. BteCA $\iota$  showed a high catalytic activity ( $k_{\text{cat}} 3.0 \times 10^5 \text{ s}^{-1}$ ) for the physiological reaction of CO<sub>2</sub> hydration to bicarbonate and protons and, as expected, was inhibited by the sulphonamide acetazolamide ( $K_i = 519 \text{ nM}$ ) (Table 1).

Worth mentioning is the fact that purified, recombinant BteCA $\iota$  displayed a  $k_{\text{cat}}$  value of the same order of magnitude of hCA I, whereas the affinity for the substrate resulted higher than that of the two human isoforms (Table 1). Here, we underline that  $\iota$ -CAs appear phylogenetically well separated from all the other bacterial CAs ( $\alpha$ ,  $\beta$  and  $\gamma$ ), reinforcing the fact that these proteins were classified in a new CA class<sup>66</sup>. It has been speculated that bacterial  $\iota$ -CAs may derive from the modification of an ancestor gene, which they had in common with  $\gamma$ -CAs; the latter enzymes are so



**Figure 1.** Combined lanes of SDS-PAGE and protonography of BteCA<sub>1</sub>. Lane 1, purified recombinant BteCA<sub>1</sub>; Lane 2, protonogram showing the enzyme activity on the polyacrylamide gel; Lane STD, molecular markers, from the top: 50.0 kDa, 37.0 kDa, 25 kDa and 20 kDa. Boxes with continuous lines indicate the protein bands identifying BteCA<sub>1</sub> (calculated molecular mass of 19.0 kDa).

far considered the oldest class among all CAs<sup>9,10,15,18,66</sup>. However, the hypothesis an ancestor gene common to  $\iota$ - and  $\gamma$ -CAs needs to be validated by further work.

### 3.2. BteCA<sub>1</sub> activation profile

Purified, recombinant BteCA<sub>1</sub> was then used to determine the corresponding activation profile with amines and amino acids (compounds **1–24**) reported in Figure 2. Some of these compounds are biogenic amines or bioactive derivatives that have a well-known pharmacological activity<sup>67</sup>. Resulting data provided original information on the activation profile of these CAAs with respect to a  $\iota$ -CA class enzyme.

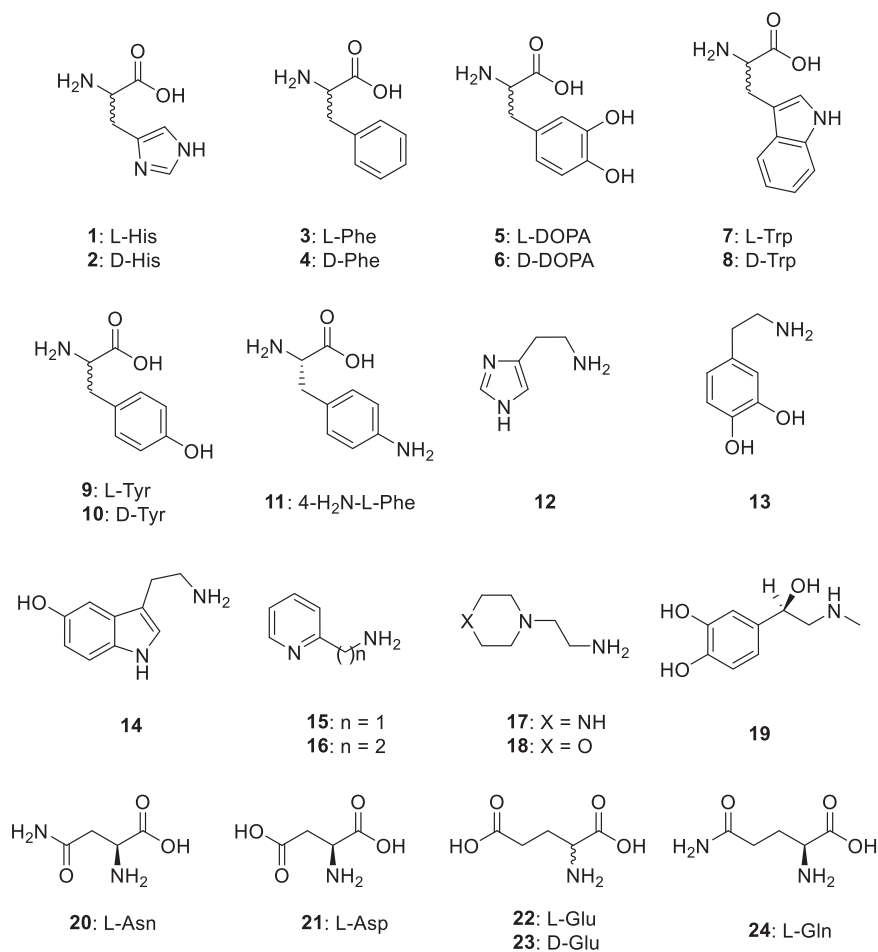
Table 2 shows kinetic parameters of some CAs in the presence of the substrate, namely CO<sub>2</sub> at a concentration of 15 mM, when experiments were performed in the absence or presence of the activator L-Trp (at 10  $\mu$ M final concentration). As expected, under these experimental conditions L-Trp efficiently activated hCA I, hCA II and  $\beta$ -CA from *Escherichia coli* (EcoCA $\beta$ ); these enzymes

**Table 1.** BteCA<sub>1</sub>, hCAI and hCAII kinetic parameters for the catalysed CO<sub>2</sub> hydration reaction.

Organism	Enzyme acronym	Class	$k_{cat}$ (s <sup>-1</sup> )	$K_M$ (M)	$k_{cat}/K_M$ (M <sup>-1</sup> ·s <sup>-1</sup> )	$K_I$ (Acetazolamide) (nM)
<i>Homo sapiens</i>	hCA I	$\alpha$	$2.0 \times 10^5$	$4.0 \times 10^{-3}$	$5.0 \times 10^7$	250
	hCA II	$\alpha$	$1.4 \times 10^6$	$9.3 \times 10^{-3}$	$1.5 \times 10^8$	12
<i>Burkholderia territorii</i>	BteCA <sub>1</sub>	$\iota$	$3.0 \times 10^5$	$3.1 \times 10^{-3}$	$9.7 \times 10^7$	519

The kinetic measurements were carried out in 10 mM HEPES buffer, pH 7.5, at 20 °C.

Reported mean values are from three different assays performed by the stopped flow technique; errors were in the range of  $\pm 5$ –10% of the reported values (data not shown).



**Figure 2.** Amino acids and amines **1–24** investigated as CAAs of BteCA<sub>1</sub>.

**Table 2.** Activation of BteCA<sub>I</sub>, hCA I, hCA II and EcoCAβ with L-Trp. Experiments were performed for the CO<sub>2</sub> hydration reaction, at 25 °C, using a stopped-flow assay<sup>58</sup>.

Enzyme acronym	Class	$k_{cat}$ (s <sup>-1</sup> )	$K_M$ (mM)	$(k_{cat})_{L-Trp}$ (s <sup>-1</sup> )**	$(K_A)_{L-Trp}$ (μM)***
hCA I <sup>a</sup>	α	$2.0 \times 10^5$	4.0	$3.4 \times 10^5$	44.0
hCA II <sup>a</sup>	α	$1.4 \times 10^6$	9.3	$4.9 \times 10^6$	27.0
EcoCAβ <sup>b</sup>	β	$5.3 \times 10^5$	12.9	$1.8 \times 10^6$	18.3
BteCAI <sup>c</sup>	ι	$3.0 \times 10^5$	3.1	$5.9 \times 10^5$	10.2

\*Observed catalytic rate without activator.  $K_M$  values in the presence and the absence of activators were the same for the various CAs (data not shown).

\*\*Observed catalytic rate in the presence of 10 μM L-Trp.

\*\*\*The activation constant ( $K_A$ ) for each enzyme was obtained by fitting the observed catalytic enhancements as a function of the activator concentration<sup>2</sup>.

<sup>a</sup>Data for human recombinant isozymes, from ref. <sup>66</sup>; <sup>b</sup>data for bacterial recombinant enzyme, from ref. <sup>68</sup>; <sup>c</sup>This work.

All reported values are the mean from at least three determinations performed for the CO<sub>2</sub> hydration reaction; errors were in the range of ±5–10% of the reported values (data not shown)<sup>58</sup>.

**Table 3.** Activation of BteCA<sub>I</sub>, hCA I and hCA II with amino acids and amines 1–24. Experiments were performed for the CO<sub>2</sub> hydration reaction, at 25 °C, and performed by a stopped-flow assay<sup>58</sup>.

No.	Compound	$K_A$ (μM)*		
		hCA I <sup>a</sup>	hCA II <sup>a</sup>	BteCAI <sup>b</sup>
1	L-His	0.03	10.9	8.6
2	D-His	0.09	43	6.2
3	L-Phe	0.07	0.013	36.5
4	D-Phe	86	0.035	9.4
5	L-DOPA	3.1	11.4	4.3
6	D-DOPA	4.9	7.8	11.7
7	L-Trp	44	27	10.2
8	D-Trp	41	12	6.1
9	L-Tyr	0.02	0.011	8.0
10	D-Tyr	0.04	0.013	7.3
11	4-H <sub>2</sub> N-L-Phe	0.24	0.15	6.9
12	Histamine	2.1	125	6.0
13	Dopamine	13.5	9.2	8.7
14	Serotonin	45	50	13.3
15	2-Pyridyl-methylamine	26	34	24.1
16	2-(2-Aminoethyl)pyridine	13	15	21.5
17	1-(2-Aminoethyl)-piperazine	7.4	2.3	3.9
18	4-(2-Aminoethyl)-morpholine	0.14	0.19	12.0
19	L-Adrenaline	0.09	96.0	9.7
20	L-Asn	11.3	>100	45.6
21	L-Asp	5.20	>100	8.4
22	L-Glu	6.43	>100	18.4
23	D-Glu	10.7	>100	8.5
24	L-Gln	>100	>50	5.8

\*Mean values from three determinations<sup>58</sup>. Errors were in the range of 5–10% of the reported values (data not shown).

<sup>a</sup>Data for human recombinant isozymes, from ref.<sup>2</sup>.

<sup>b</sup>This work.

were here used as positive controls since corresponding kinetic data and their structures in complex with CAAs have already been described<sup>2,68</sup>. Experiments originally demonstrated here that L-Trp can also exert an activation activity for a member of the ι-CA class. Indeed, the activator increased the  $k_{cat}$  value of all these enzymes but did not influence the corresponding  $K_M$  one (data not shown). Also in the case of ι-CAs, this proved that, when the enzyme/L-Trp complex is formed, the latter takes part in the proton transfer process, but the activator does not interfere with the binding of CO<sub>2</sub> to the protein active site, since the value of  $K_M$  remained unchanged notwithstanding the absence/presence of L-Trp (Table 2).

Compounds 1–24 were thereafter assayed dose-dependently for their interaction with BteCA<sub>I</sub> with the aim to assess the corresponding activation constant ( $K_A$ ) values (Table 3). Again, the activation data of hCA I and II were analysed and are here reported for comparison reasons. The following structure-activity relationship (SAR) data for the activation of BteCA<sub>I</sub> may be noted from the data reported in Table 3:

- Most of the tested activators showed an efficient and rather flat activating efficacy towards BteCA<sub>I</sub>, with  $K_A$  values ranging between 3.9 and 13.3 μM. Both amino acids (1, 2, 4–11, 21, 23 and 24) as well as amines (12–14, 17–19) showed this type of behaviour, with basically poor SAR to be discussed due to the low range of activity variations. This condition is different from what observed for hCA I and hCA II activation, for which some activators also showed nanomolar activity, e.g., L-Phe, L- and D-Tyr (hCA I and hCA II), and L-adrenaline, L- and D-His (hCA I). For the enantiomeric pairs L-/D-His, L-/D-Phe, L-/D-Trp and L-/D-Tyr, the D-enantiomer was always a better activator than the corresponding L-one. Only for DOPA the reverse was true, with L-DOPA being almost 3 times a more efficient activator compared to the corresponding D-enantiomer.
- Several compounds, among which L-Phe, the pyridyl-alkylamines 15 and 16, as well as L-Asn and L-Glu, showed rather weak CA activating effects against the ι-class enzyme, with  $K_A$  values ranging between 18.4 and 45.6 μM. Also for the L-/D-Glu enantiomeric pair, the D-enantiomer was always a better activator than the corresponding L-one. When data of the L-Asp/L-Asn pair were evaluated, the amide derivative appeared a 5.42-fold weaker activator than the acid counterpart. These results highlight that rather small structural changes (even at the stereogenic center) in the assayed compounds can lead to rather important modifications of the corresponding CA activating properties.
- As already anticipated above, the activation profile of the ι-class bacterial enzyme was very different from those of hCA I and hCA II.

## 4. Conclusions

In this study, we have reported an original analysis of the activation properties of various compounds towards the recently discovered group of ι-CAs. To this aim, we investigated the activation effect of amino acids and amines on BteCA<sub>I</sub>, which our group recently characterised as a zinc-dependent enzyme with a significant catalytic activity ( $k_{cat}$   $3.0 \times 10^5$  s<sup>-1</sup>) for the physiological reaction of CO<sub>2</sub> hydration to bicarbonate and protons. Some amino acids and amines, among which L-/D-His, D-Phe, L-/D-DOPA, L-/D-Trp, L-/D-Tyr, L-Asp, D-Glu, L-Gln, histamine, dopamine, serotonin, 1-(2-aminoethyl)-piperazine and others, showed efficient BteCA<sub>I</sub> activating properties, with activation constants ranging between 3.9 and 13.3 μM. Conversely, L-Phe, some pyridyl-alkylamines, L-Asn and L-Glu showed a weaker activating effect against this enzyme, with  $K_A$  values ranging between 18.4 and 45.6 μM. Although no information is available on active site architecture, metal ion coordination and catalytic mechanism of members of the ι-group of CAs yet, the results of this study can add further

information for a better understanding of this novel class of enzymes. Their rationalisation will be fully achieved when the X-ray crystal structure of BteCA<sub>I</sub> and of a BteCA<sub>I</sub>-CAA complex will be solved, and mechanistic considerations will be then finally elaborated according to a structural basis.

## Acknowledgements

We are grateful to Valentina Brasiello and Giovanni Del Monaco for their technical assistance.

## Disclosure statement

No potential conflict of interest was reported by the author(s).

## Funding

This research was funded by the Italian Ministry of University and Research, project FISR2019\_04819 BacCAD (to CTS and CC).

## ORCID

Claudiu T. Supuran  <http://orcid.org/0000-0003-4262-0323>  
Clemente Capasso  <http://orcid.org/0000-0003-3314-2411>

## References

- Katsumata M. Influence of enzyme activators and inhibitors, present in an enzyme preparation, on the relations between reaction rate and enzyme concentration. *J Theor Biol* 1969; 24:294–306.
- Supuran CT. Carbonic anhydrase activators. *Future Med Chem* 2018;10:561–73.
- Okamoto M, Hayashi K. Dynamic behavior of cyclic enzyme systems. *J Theor Biol* 1983;104:591–8.
- Vullo D, Del Prete S, Capasso C, Supuran CT. Carbonic anhydrase activators: activation of the beta-carbonic anhydrase from *Malassezia globosa* with amines and amino acids. *Bioorg Med Chem Lett* 2016;26:1381–5.
- London WP, Steck TL. Kinetics of enzyme reactions with interaction between a substrate and a (metal) modifier. *Biochemistry* 1969;8:1767–79.
- Nocentini A, Angeli A, Carta F, et al. Reconsidering anion inhibitors in the general context of drug design studies of modulators of activity of the classical enzyme carbonic anhydrase. *J Enzyme Inhib Med Chem* 2021;36:561–80.
- Angeli A, Carta F, Nocentini A, et al. Carbonic anhydrase inhibitors targeting metabolism and tumor microenvironment. *Metabolites* 2020;10:412–32.
- Blandina P, Provensi G, Passani MB, et al. Carbonic anhydrase modulation of emotional memory. Implications for the treatment of cognitive disorders. *J Enzyme Inhib Med Chem* 2020;35:1206–14.
- Supuran CT, Capasso C. Biomedical applications of prokaryotic carbonic anhydrases. *Expert Opin Ther Pat* 2018;28:745–54.
- Supuran CT, Capasso C. An overview of the bacterial carbonic anhydrases. *Metabolites* 2017;7:56–74.
- Supuran CT, Capasso C. Carbonic anhydrase from *Porphyromonas gingivalis* as a drug target. *Pathogens* 2017; 6:30–42.
- Capasso C, Supuran CT. Inhibition of bacterial carbonic anhydrases as a novel approach to escape drug resistance. *Curr Top Med Chem* 2017;17:1237–48.
- Capasso C, Supuran CT. An overview of the carbonic anhydrases from two pathogens of the oral cavity: *Streptococcus mutans* and *Porphyromonas gingivalis*. *Curr Top Med Chem* 2016;16:2359–68.
- Annunziato G, Angeli A, D'Alba F, et al. Discovery of new potential anti-infective compounds based on carbonic anhydrase inhibitors by rational target-focused repurposing approaches. *ChemMedChem* 2016;11:1904–14.
- Ozensoy Guler O, Capasso C, Supuran CT. A magnificent enzyme superfamily: carbonic anhydrases, their purification and characterization. *J Enzyme Inhib Med Chem* 2016;31: 689–94.
- Del Prete S, Vullo D, De Luca V, et al. Sulfonamide inhibition studies of the beta-carbonic anhydrase from the pathogenic bacterium *Vibrio cholerae*. *Bioorg Med Chem* 2016;24: 1115–20.
- Del Prete S, De Luca V, De Simone G, et al. Cloning, expression and purification of the complete domain of the eta-carbonic anhydrase from *Plasmodium falciparum*. *J Enzyme Inhib Med Chem* 2016;31:54–9. doi:10.1080/14756366.2016.1217856.
- Capasso C, Supuran CT. An overview of the alpha-, beta- and gamma-carbonic anhydrases from bacteria: can bacterial carbonic anhydrases shed new light on evolution of bacteria? *J Enzyme Inhib Med Chem* 2015;30:325–32.
- Supuran CT. Structure and function of carbonic anhydrases. *Biochem J* 2016;473:2023–32.
- McKenna R, Supuran CT. Carbonic anhydrase inhibitors drug design. *Subcell Biochem* 2014;75:291–323.
- Neri D, Supuran CT. Interfering with pH regulation in tumours as a therapeutic strategy. *Nat Rev Drug Discov* 2011;10:767–77.
- Supuran CT. Carbonic anhydrases: novel therapeutic applications for inhibitors and activators. *Nat Rev Drug Discov* 2008;7:168–81.
- Supuran CT. Carbonic anhydrases—an overview. *Curr Pharm Des* 2008;14:603–14.
- Capasso C, Supuran CT. An overview of the selectivity and efficiency of the bacterial carbonic anhydrase inhibitors. *Curr Med Chem* 2015;22:2130–9.
- Rogato A, Del Prete S, Nocentini A, et al. *Phaeodactylum tricorutum* as a model organism for testing the membrane penetrability of sulphonamide carbonic anhydrase inhibitors. *J Enzyme Inhib Med Chem* 2019;34:510–8.
- Angeli A, Pinteala M, Maier SS, et al. Inhibition of alpha-, beta-, gamma-, delta-, zeta- and eta-class carbonic anhydrases from bacteria, fungi, algae, diatoms and protozoans with famotidine. *J Enzyme Inhib Med Chem* 2019;34:644–50.
- Berrino E, Bozdog M, Del Prete S, et al. Inhibition of alpha-, beta-, gamma-, and delta-carbonic anhydrases from bacteria and diatoms with n'-aryl-n-hydroxy-ureas. *J Enzyme Inhib Med Chem* 2018;33:1194–8.
- Angeli A, Del Prete S, Alasmay FAS, et al. The first activation studies of the eta-carbonic anhydrase from the malaria parasite *Plasmodium falciparum* with amines and amino acids. *Bioorg Chem* 2018;80:94–8.
- Mogensen EG, Janbon G, Chaloupka J, et al. *Cryptococcus neoformans* senses CO<sub>2</sub> through the carbonic anhydrase can2 and the adenyl cyclase cac1. *Eukaryot Cell* 2006;5: 103–11.

30. Schlicker C, Hall RA, Vullo D, et al. Structure and inhibition of the CO<sub>2</sub>-sensing carbonic anhydrase can2 from the pathogenic fungus *Cryptococcus neoformans*. *J Mol Biol* 2009;385:1207–20.
31. Klengel T, Liang WJ, Chaloupka J, Ruoff C, et al. Fungal adenylyl cyclase integrates CO<sub>2</sub> sensing with camp signaling and virulence. *Curr Biol* 2005;15:2021–6.
32. Uno I, Matsumoto K, Hirata A, Ishikawa T. Outer plaque assembly and spore encapsulation are defective during sporulation of adenylyl cyclase-deficient mutants of *Saccharomyces cerevisiae*. *J Cell Biol* 1985;100:1854–62.
33. Chang JC, Oude-Elferink RP. Role of the bicarbonate-responsive soluble adenylyl cyclase in pH sensing and metabolic regulation. *Front Physiol* 2014;5:42.
34. Ohkuni K, Hayashi M, Yamashita I. Bicarbonate-mediated social communication stimulates meiosis and sporulation of *Saccharomyces cerevisiae*. *Yeast* 1998;14:623–31.
35. Briganti F, Mangani S, Orioli P, et al. Carbonic anhydrase activators: X-ray crystallographic and spectroscopic investigations for the interaction of isozymes i and ii with histamine. *Biochemistry* 1997;36:10384–92.
36. Temperini C, Scozzafava A, Vullo D, Supuran CT. Carbonic anhydrase activators. Activation of isozymes i, ii, iv, va, vii, and xiv with l- and d-histidine and crystallographic analysis of their adducts with isoform ii: engineering proton-transfer processes within the active site of an enzyme. *Chemistry* 2006;12:7057–66.
37. Temperini C, Scozzafava A, Puccetti L, Supuran CT. Carbonic anhydrase activators: X-ray crystal structure of the adduct of human isozyme ii with l-histidine as a platform for the design of stronger activators. *Bioorg Med Chem Lett* 2005;15:5136–41.
38. Bhatt A, Mondal UK, Supuran CT, et al. Crystal structure of carbonic anhydrase ii in complex with an activating ligand: implications in neuronal function. *Mol Neurobiol* 2018;55:7431–7.
39. Licsandru E, Tanc M, Kocsis I, et al. A class of carbonic anhydrase i - selective activators. *J Enzyme Inhib Med Chem* 2017;32:37–46.
40. Supuran CT. Carbonic anhydrase inhibition/activation: trip of a scientist around the world in the search of novel chemotypes and drug targets. *Curr Pharm Des* 2010;16:3233–45.
41. Temperini C, Scozzafava A, Supuran CT. Carbonic anhydrase activation and the drug design. *Curr Pharm Des* 2008;14:708–15.
42. Carta F, Dumy P, Supuran CT, Winum JY. Multivalent carbonic anhydrases inhibitors. *Int J Mol Sci* 2019;20:5352–65.
43. Aspatwar A, Winum JY, Carta F, et al. Carbonic anhydrase inhibitors as novel drugs against mycobacterial beta-carbonic anhydrases: an update on in vitro and in vivo studies. *Molecules* 2018;23:2911–24.
44. Angeli A, Chiamonte N, Manetti D, et al. Investigation of piperazines as human carbonic anhydrase i, ii, iv and vii activators. *J Enzyme Inhib Med Chem* 2018;33:303–8.
45. Supuran CT. Carbonic anhydrase inhibitors: an editorial. *Expert Opin Ther Pat* 2013;23:677–9.
46. Supuran CT. Carbonic anhydrase inhibitors. *Bioorg Med Chem Lett* 2010;20:3467–74.
47. Supuran CT. Experimental carbonic anhydrase inhibitors for the treatment of hypoxic tumors. *J Exp Pharmacol* 2020;12:603–17.
48. Angeli A, Carta F, Nocentini A, et al. Response to perspectives on the classical enzyme carbonic anhydrase and the search for inhibitors. *Biophys J* 2021;120:178–81.
49. Nocentini A, Cuffaro D, Ciccone L, et al. Activation of carbonic anhydrases from human brain by amino alcohol oxime ethers: towards human carbonic anhydrase vii selective activators. *J Enzyme Inhib Med Chem* 2021;36:48–57.
50. Provensi G, Carta F, Nocentini A, et al. A new kid on the block? Carbonic anhydrases as possible new targets in Alzheimer's disease. *Int J Mol Sci* 2019;20:4724–40.
51. Mollica A, Macedonio G, Stefanucci A, et al. Five- and six-membered nitrogen-containing compounds as selective carbonic anhydrase activators. *Molecules* 2017;22:2178–90.
52. Supuran CT. How many carbonic anhydrase inhibition mechanisms exist? *J Enzyme Inhib Med Chem* 2016;31:345–60.
53. Kaur J, Cao X, Abutaleb NS, et al. Optimization of acetazolamide-based scaffold as potent inhibitors of vancomycin-resistant enterococcus. *J Med Chem* 2020;63:9540–62.
54. Tanini D, Capperucci A, Supuran CT, Angeli A. Sulfur, selenium and tellurium containing amines act as effective carbonic anhydrase activators. *Bioorg Chem* 2019;87:516–22.
55. Innocenti A, Hall RA, Scozzafava A, et al. Carbonic anhydrase activators: activation of the beta-carbonic anhydrases from the pathogenic fungi *Candida albicans* and *Cryptococcus neoformans* with amines and amino acids. *Bioorg Med Chem* 2010;18:1034–7.
56. De Smet B, Mayo M, Peeters C, et al. *Burkholderia stagnalis* sp. Nov. And *Burkholderia territorii* sp. Nov., two novel *Burkholderia cepacia* complex species from environmental and human sources. *Int J Syst Evol Microbiol* 2015;65:2265–71.
57. De Luca V, Petreni A, Nocentini A, et al. Effect of sulfonamides and their structurally related derivatives on the activity of iota-carbonic anhydrase from *Burkholderia territorii*. *Int J Mol Sci* 2021;22:571–83.
58. Khalifah RG. The carbon dioxide hydration activity of carbonic anhydrase. I. Stop-flow kinetic studies on the native human isoenzymes b and c. *J Biol Chem* 1971;246:2561–73.
59. Vullo D, Innocenti A, Nishimori I, et al. Carbonic anhydrase activators: activation of the human isoforms vii (cytosolic) and xiv (transmembrane) with amino acids and amines. *Bioorg Med Chem Lett* 2007;17:4107–12.
60. Innocenti A, Hilvo M, Parkkila S, et al. Carbonic anhydrase activators. Activation of the membrane-associated isoform xv with amino acids and amines. *Bioorg Med Chem Lett* 2009;19:3430–3.
61. Angeli A, Del Prete S, Pinteala M, et al. The first activation study of the beta-carbonic anhydrases from the pathogenic bacteria *Brucella suis* and *Francisella tularensis* with amines and amino acids. *J Enzyme Inhib Med Chem* 2019;34:1178–85.
62. Stefanucci A, Angeli A, Dimmito MP, et al. Activation of beta- and gamma-carbonic anhydrases from pathogenic bacteria with tripeptides. *J Enzyme Inhib Med Chem* 2018;33:945–50.
63. Bua S, Haapanen S, Kuuslahti M, et al. Activation studies of the beta-carbonic anhydrase from the pathogenic protozoan *Entamoeba histolytica* with amino acids and amines. *Metabolites* 2019;9:26–33.
64. Angeli A, Donald WA, Parkkila S, Supuran CT. Activation studies with amines and amino acids of the beta-carbonic anhydrase from the pathogenic protozoan *Leishmania donovani chagasi*. *Bioorg Chem* 2018;78:406–10.

65. Nguyen GTH, Tran TN, Podgorski MN, et al. Nanoscale ion emitters in native mass spectrometry for measuring ligand-protein binding affinities. *ACS Cent Sci* 2019;5:308–18.
66. Del Prete S, Nocentini A, Supuran CT, Capasso C. Bacterial iota-carbonic anhydrase: a new active class of carbonic anhydrase identified in the genome of the gram-negative bacterium *Burkholderia territorii*. *J Enzyme Inhib Med Chem* 2020;35:1060–8.
67. Provensi G, Nocentini A, Passani MB, et al. Activation of carbonic anhydrase isoforms involved in modulation of emotional memory and cognitive disorders with histamine agonists, antagonists and derivatives. *J Enzyme Inhib Med Chem* 2021;36:719–26.
68. Nocentini A, Del Prete S, Mastrolorenzo MD, et al. Activation studies of the beta-carbonic anhydrases from *Escherichia coli* with amino acids and amines. *J Enzyme Inhib Med Chem* 2020;35:1379–86.