

## The impact of different window configurations, natural ventilation and solar shading strategies on the indoor comfort level in simple rooms, in Mediterranean area.

G. Alcamo, S. Murgia, M. Sala  
University of Florence, Italy

### ABSTRACT

The case studied is related to a residential family house, which is a typical residential building in the South Mediterranean Sea. The house type is also representative for second home. It is a two-storey house that is assumed to be located in Rome.

The objective of the research is to compare indoor comfort conditions of two kitchens (in which internal gains are defined taking into account a traditional use of the kitchen in Southern Italy) with different window configurations, natural ventilation and solar shading strategies to avoid overheating in summer.

Both rooms have the same floor area and the same total window area. One kitchen has a facade window with shutter; the other kitchen has a facade window and two roof windows including shutters.

The aim of the research is to ascertain the differences in indoor comfort, temperature, air flow and solar distribution for two window/shutter control regimes, in four main orientations and with different roof constructions.

The simulation tool ESP-r from the University of Strathclyde has been used in the report and the ESP-r model has been verified by the

University. This research project has been sponsored by VELUX A/S.

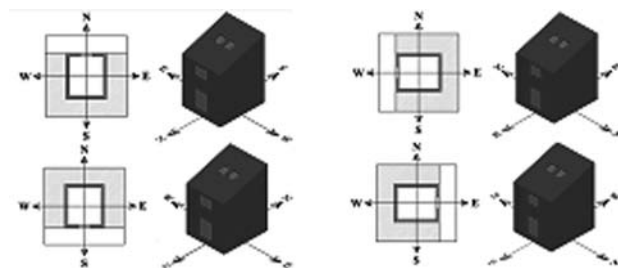


Figure 1: The simple model facing North, West, South and East

### 1. CONSTRUCTION MATERIALS

All building constructions are the same in all models, except roof constructions.

It has been requested to evaluate differences due to concrete roof and wooden roof constructions with different thermal insulation thicknesses.

Two concrete roofs have been considered, the first one

with 4cm of thermal insulation material, the second one with 8cm of thermal insulation material.

The models that adopt concrete roof are named "c4" and "c8". The thermal insulation adopted is panel in extruded Polystyrene.

Wooden roofs have different thermal insulation material thickness: one with 8cm of glass-wool "w8", the other one with 16cm of glass-wool "w16".

The concrete roof is characterised by an higher density value compared to the wooden roof.

#### 1.1 External Wall

The external wall, chosen for simulations, is characterized by a U value of 0.42 W/m<sup>2</sup>K; it is a cavity wall with 4 cm of thermal insulation and it is the most common wall construction used in the Mediterranean area.

#### 1.2 Windows and Shutters

The kitchens fulfil the minimum window area required which is 1/8 of the floor area. The windows have been defined as glazing area without frame and with external roller shutters.

Both kitchens have the same transparent surface but a different area distribution: the room on the lower floor has 2.66 m<sup>2</sup> of facade window, the room on the upper floor has two roof windows (0.56 m<sup>2</sup> each) and one facade window (1.54 m<sup>2</sup>) with a total transparent area of 2.66 m<sup>2</sup>. The glazing systems are defined as double glass units with 4 mm of float glass, 16 mm of air and 4 mm of float glass (glazing U value= 2,8 W/m<sup>2</sup>K).

The roof windows are described with an air gap between the aluminium shutter and the glazing system, and facade windows with an air gap between the PVC shutter and the glazing system.

The facade windows are represented as a pair of windows with hinges on the left and right vertical frame opening inwards by about 10cm. The roof windows are horizontal centre pivot with equal upper and lower openings.

The windows are represented geometrically as two surfaces – one for the shuttered glazing and one for the exposed glazing. No attempt was made to define frames of facade windows or roof windows.

## 2. INTERNAL GAINS

The presence of occupants in rooms is defined as internal gains – that includes equipments and artificial light – according to the common usage of kitchens; they are defined in the ESP-r operation file and exposed in the table 1.

Table 1: Internal gains

| type      | start | Stop | Sensible | latent | radiant fraction | convective fraction |
|-----------|-------|------|----------|--------|------------------|---------------------|
| equipment | 0     | 24   | 38.6     | 0      | 0.300            | 0.700               |
| equipment | 7     | 9    | 100      | 0      | 0.500            | 0.500               |
| equipment | 12    | 14   | 100      | 0      | 0.500            | 0.500               |
| equipment | 19    | 21   | 100      | 0      | 0.500            | 0.500               |
| light     | 7     | 8    | 100      | 0      | 0.800            | 0.200               |
| light     | 19    | 21   | 100      | 0      | 0.800            | 0.200               |
| occupant  | 7     | 9    | 380      | 180    | 0.200            | 0.800               |
| occupant  | 12    | 14   | 380      | 180    | 0.200            | 0.800               |
| occupant  | 19    | 21   | 380      | 180    | 0.200            | 0.800               |

## 3. NATURAL VENTILATION STRATEGIES

The objective of the research is to compare two kitchens with different window configurations and natural ventilation strategies to avoid summer overheating by applying and studying different natural ventilation strategies. The ESP-r model includes: a base case (upper\_bc and lower\_bc zones), natural ventilation strategy 1 (upper\_sch1 and lower\_sch1 zones) and natural ventilation strategy 2 (upper\_sch2 and lower\_sch2 zones).

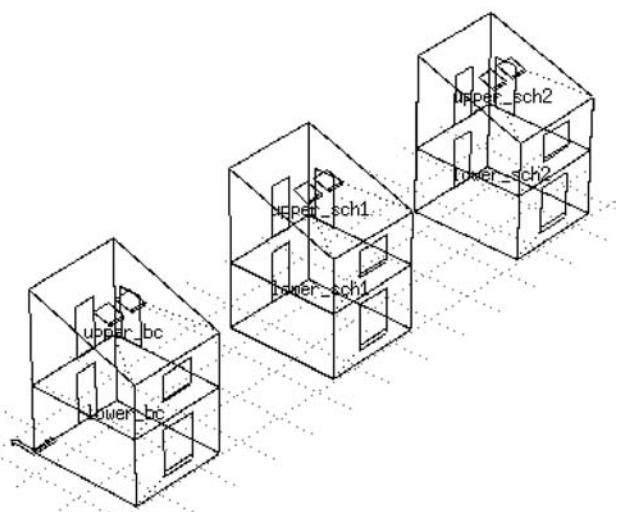


Figure 2: The base-case, natural ventilation strategy 1 and natural ventilation strategy 2.

**Base Model:** it was created to compare with natural ventilation strategy 1 and natural ventilation strategy 2. It keeps all windows closed without natural ventilation strategies applied, with air change rate of 0.5 ac/h plus a crack infiltration. Basecase model is also without shutters. **Model with applied natural ventilation strategy 1:** control strategy 1 has no human intervention during the day. There is an automatic window and shutter control. Dur-

ing the day, unless the inside temperature is lower than the outside temperature, the shutters are opened to 11% of the area and the windows are opened to 11% of the area. At night the shutters are fully open and the windows are opened according to a range-based air flow control law, see chapter 4.4 where the controls are described. **Model with applied natural ventilation strategy 2:** control strategy two has human intervention during the day and will track occupancy in the kitchen.

When there are occupants during the day they will open the windows and shutter to 11% and they will do this whether or not the outside temperature is above or below kitchen temperature. When there are no occupants the windows will be closed whether or not the outside temperature is above or below kitchen temperature.

**Control for night:** at night the same control logic will be used in both kitchens and for strategy 1 and 2. At night the shutters are fully open on all roof and facade windows. The air flow logic is a range-based controller where:

- If the kitchen temperature falls below 18°C, the apertures associated with the windows will contract to 1% opening area.
- If the kitchen temperature is between 18°C and 22°C, the nominal area of the window aperture (~10%) will be used.
- If the kitchen temperature is above 22°C, a 15% opening area is used, and if the kitchen temperature rises above 26°C, a 20% opening will be used. This approximates to an occupant who will close the windows if the room gets cool and will progressively open the windows as the room temperature rises.

## 4. ANALYSED MODELS AND RESULTS

Simulations were run for the summer season, from 1<sup>st</sup> of June until 30<sup>th</sup> of September (2928 hours).

The following scheme shows the studied models and describes the constructions.

Table 2: Studied cases

|   |
|---|
| <b>C4:</b> c4_e, c4_n, c4_s, c4_w   |
| Concrete (c) roof with 4 cm of thermal insulation material oriented to the east (e), the north (n), the south (s), the west (w) |
| <b>C8:</b> c8_e, c8_n, c8_s, c8_w   |
| Concrete (c) roof with 8 cm of thermal insulation material oriented to the east (e), the north (n), the south (s), the west (w) |
| <b>W8:</b> w8_e, w8_n, w8_s, w8_w   |
| Wooden (w) roof with 8 cm of thermal insulation material oriented to the east (e), the north (n), the south (s), the west (w)   |
| <b>W16:</b> w16_e, w16_n, w16_s, w16_w  |
| Wooden (w) roof with 16 cm of thermal insulation material oriented to the east (e), the north (n), the south (s), the west (w)  |

We have simulated 16 models, with two natural ventilation strategies (32 cases) for upper and lower zones (64 results). Following: tables with main results.

Table 3: Maximum temperature for all analysed models for the summer period

| ORIENTATION | MODEL TYPOLOGY | c4 concrete roof with 4 cm of insulation |       | c8 concrete roof with 8 cm of insulation |       | w8 wooden roof with 8 cm of insulation |       | w16 woodenroof with 16 cm of insulation |       |
|-------------|----------------|--|-------|--|-------|--|-------|---|-------|
|             |                | U (w/m <sup>2</sup> ) = 0.86             |       | U (w/m <sup>2</sup> ) = 0.38             |       | U (w/m <sup>2</sup> ) = 0.41           |       | U (w/m <sup>2</sup> ) = 0.25            |       |
|             |                | Tmax (°C)                                |       | Tmax (°C)                                |       | Tmax (°C)                              |       | Tmax (°C)                               |       |
| NORTH       | Upper          | 32.04                                    | 32.08 | 32.01                                    | 32.06 | 32.28                                  | 32.39 | 32.19                                   | 32.21 |
|             | Lower          | 32.55                                    | 32.64 | 32.53                                    | 32.61 | 32.57                                  | 32.67 | 32.54                                   | 32.65 |
| SOUTH       | Upper          | 33.47                                    | 33.58 | 33.41                                    | 33.53 | 33.97                                  | 34.05 | 33.68                                   | 33.78 |
|             | Lower          | 33.99                                    | 34.18 | 33.97                                    | 34.14 | 33.96                                  | 34.19 | 33.93                                   | 34.15 |
| WEST        | Upper          | 32.62                                    | 32.78 | 32.59                                    | 32.77 | 33.11                                  | 33.23 | 33.02                                   | 33.06 |
|             | Lower          | 33.67                                    | 33.93 | 33.64                                    | 33.90 | 33.67                                  | 33.94 | 33.65                                   | 33.93 |
| EAST        | Upper          | 32.98                                    | 33.11 | 32.94                                    | 33.08 | 33.41                                  | 33.55 | 33.18                                   | 33.32 |
|             | Lower          | 33.65                                    | 33.80 | 33.61                                    | 33.77 | 33.66                                  | 33.84 | 33.63                                   | 33.79 |

The upper floor obtains in general maximum temperatures at the same level as the lower floor. Ventilation strategy 2 obtains a higher maximum temperature than ventilation strategy 1. The maximum temperature with a north orientation is approximately 1.5°C lower than south orientation. West-oriented model reaches a lower temperature than the east-oriented model.

Table 4: Number of hours in which PPD (Predicted Percentage of Dissatisfied) is less than 10%.

| ORIENTATION | MODEL TYPOLOGY | c4 concrete roof with 4 cm of insulation |                        | c8 concrete roof with 8 cm of insulation |                        | w8 wooden roof with 8 cm of insulation |                        | w16 woodenroof with 16 cm of insulation |                        |
|-------------|----------------|--|------------------------|--|------------------------|--|------------------------|---|------------------------|
|             |                | hours                                    |                        | hours                                    |                        | hours                                  |                        | hours                                   |                        |
|             |                | Ventilation Strategy 1                   | Ventilation Strategy 2 | Ventilation Strategy 1                   | Ventilation Strategy 2 | Ventilation Strategy 1                 | Ventilation Strategy 2 | Ventilation Strategy 1                  | Ventilation Strategy 2 |
| NORTH       | Upper          | 1155 (39.44%)                            | 1090 (37.22%)          | 1174 (40.09%)                            | 1106 (37.77%)          | 1116 (38.11%)                          | 1045 (35.68%)          | 1148 (39.20%)                           | 1064 (36.33%)          |
|             | Lower          | 1068 (36.47%)                            | 1000 (34.15%)          | 1073 (36.64%)                            | 995 (33.98%)           | 1066 (36.40%)                          | 1000 (34.15%)          | 1073 (36.64%)                           | 1002 (34.22%)          |
| SOUTH       | Upper          | 1134 (38.72%)                            | 941 (32.13%)           | 1159 (39.58%)                            | 946 (32.30%)           | 1101 (37.60%)                          | 909 (31.64%)           | 1124 (38.38%)                           | 935 (31.93%)           |
|             | Lower          | 821 (28.03%)                             | 745 (25.44%)           | 826 (28.21%)                             | 747 (25.51%)           | 827 (28.24%)                           | 738 (25.20%)           | 833 (28.44%)                            | 742 (25.34%)           |
| WEST        | Upper          | 1159 (39.58%)                            | 991 (33.84%)           | 1170 (39.95%)                            | 995 (33.98%)           | 1140 (38.93%)                          | 984 (33.60%)           | 1168 (39.89%)                           | 994 (33.94%)           |
|             | Lower          | 847 (28.92%)                             | 755 (25.78%)           | 847 (28.92%)                             | 759 (25.92%)           | 854 (29.16%)                           | 758 (25.88%)           | 854 (29.16%)                            | 759 (25.92%)           |
| EAST        | Upper          | 1071 (36.57%)                            | 986 (33.67%)           | 1077 (36.78%)                            | 995 (33.98%)           | 1020 (34.83%)                          | 936 (31.96%)           | 1049 (35.82%)                           | 950 (32.44%)           |
|             | Lower          | 859 (29.33%)                             | 779 (26.60%)           | 863 (29.47%)                             | 779 (26.60%)           | 860 (29.36%)                           | 772 (26.36%)           | 862 (29.43%)                            | 776 (26.50%)           |

For the PPD evaluation it was assumed to be an activity level of 1.2 met, clothing 0.5 and air velocity 0.15 m/s. Data are collected for the summer season 1st of June until 30th of September.

Table 5: Number of hours in which PPD is less than 20%.

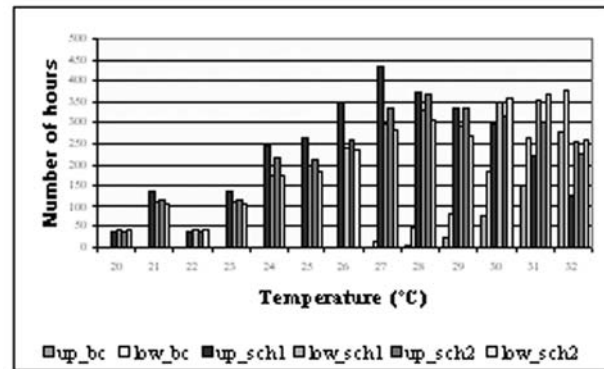
| ORIENTATION | MODEL TYPOLOGY | c4 concrete roof with 4 cm of insulation |                        | c8 concrete roof with 8 cm of insulation |                        | w8 wooden roof with 8 cm of insulation |                        | w16 woodenroof with 16 cm of insulation |                        |
|-------------|----------------|--|------------------------|--|------------------------|--|------------------------|---|------------------------|
|             |                | hours                                    |                        | hours                                    |                        | hours                                  |                        | hours                                   |                        |
|             |                | Ventilation Strategy 1                   | Ventilation Strategy 2 | Ventilation Strategy 1                   | Ventilation Strategy 2 | Ventilation Strategy 1                 | Ventilation Strategy 2 | Ventilation Strategy 1                  | Ventilation Strategy 2 |
| NORTH       | Upper          | 1947 (66.50%)                            | 1860 (63.52%)          | 1960 (66.94%)                            | 1876 (64.07%)          | 1876 (64.07%)                          | 1876 (64.07%)          | 1904 (65.03%)                           | 1810 (61.81%)          |
|             | Lower          | 1801 (61.50%)                            | 1736 (58.95%)          | 1800 (61.78%)                            | 1735 (59.25%)          | 1805 (61.65%)                          | 1717 (58.64%)          | 1809 (61.78%)                           | 1726 (58.95%)          |
| SOUTH       | Upper          | 1857 (63.42%)                            | 1591 (54.34%)          | 1870 (63.86%)                            | 1612 (55.05%)          | 1814 (63.90%)                          | 1573 (53.72%)          | 1759 (60.01%)                           | 1606 (54.85%)          |
|             | Lower          | 1437 (49.07%)                            | 1324 (45.22%)          | 1443 (49.28%)                            | 1331 (45.46%)          | 1435 (49.00%)                          | 1321 (45.32%)          | 1442 (49.25%)                           | 1327 (45.32%)          |
| WEST        | Upper          | 1868 (63.80%)                            | 1631 (55.70%)          | 1887 (64.45%)                            | 1642 (56.08%)          | 1855 (63.55%)                          | 1635 (55.84%)          | 1867 (63.76%)                           | 1641 (56.04%)          |
|             | Lower          | 1479 (50.51%)                            | 1353 (46.20%)          | 1483 (50.64%)                            | 1358 (46.38%)          | 1480 (50.55%)                          | 1354 (46.24%)          | 1482 (50.61%)                           | 1353 (46.21%)          |
| EAST        | Upper          | 1750 (59.76%)                            | 1557 (53.17%)          | 1757 (60.00%)                            | 1560 (53.28%)          | 1676 (57.24%)                          | 1502 (51.30%)          | 1717 (58.64%)                           | 1524 (52.05%)          |
|             | Lower          | 1464 (50.00%)                            | 1355 (46.27%)          | 1470 (50.20%)                            | 1358 (46.38%)          | 1472 (50.27%)                          | 1346 (45.97%)          | 1473 (50.30%)                           | 1351 (46.14%)          |

In both natural ventilation strategies upper floors allow more hours with less than 20% and 10% PPD. The automatic opening control (ventilation strategy 1) gives better results. A light construction with more insulation gives approximately the same results as a concrete construction with less insulation.

The west orientation performance is better than the east orientation, because one of the walls of the house is an external wall with 40 mm insulation and in an east orientation this wall is exposed to the south.

Based on the conclusions in table 2 and 4, it has been decided to analyse results for south-oriented models and for the worst concrete (c4\_s) and wooden roofs (w8\_s). Following, temperatures and results for models c4\_s and w8\_s.

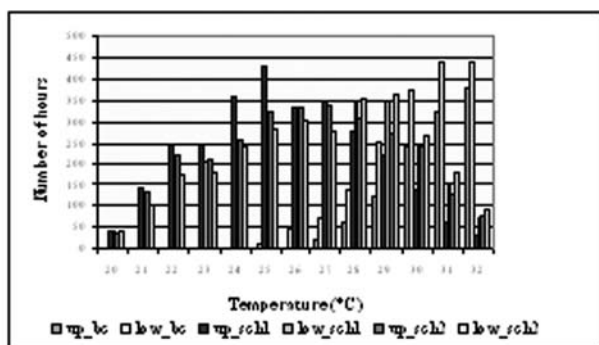
Table 6: Temperature Histogram



Results for model c4 south-oriented. The histogram explains the number of hours in which each model reaches a specific temperature.

Table 7: Temperature histogram.





Results for model w8 south-oriented.

If we simulate an occupant situation with just an imposed air volume of change of 0.5 ac/h, without a window opening control, such as in the base case model, we have a situation in which during all summer season we are not able to reach temperatures below 25°C in a kitchen on the lower floor; the minimum temperature we obtain on the upper floor is 26°C.

The base case shows the lower performance because it is unable to take advantage of night cooling and it has closed shutters during the day.

In the base case model, during summer season, we have the maximum total number of hours above 31°C, in very uncomfortable indoor conditions.

The automatic control of windows opening is the suggested natural ventilation strategy; it guarantees the best indoor comfort level during summer season.

## 5. CONCLUSIONS

The study was based on a simple model simulating two rooms with different window configurations and natural ventilation strategies: one room with façade window, the other room has one façade and two roof windows. Both rooms have the same floor area and the same window area. The simple model includes a base case and two ventilation and solar shading strategies. Simulations are conducted in ESP-r tool.

The study points out the following main findings:

- In both natural ventilation strategies the upper floors always has significantly more hours with less than 10% PPD (Predicted Percentage of Dissatisfied) compared to the lower floor, which indicates a higher occupant's satisfaction on the upper floor.
- The use of a ventilation schedule (night cooling) can lower the temperature at the start of the day.
- The use of sun screening is vital for protection against overheating, both in upper and lower floor.
- The upper floor obtains in general maximum temperatures at the same level as the lower floor.

Also, the study has shown that:

- In the north orientation the maximum temperature in the upper floor is approximately 1,5°C lower than in the south orientation.

- The numbers of hours with less than 10% PPD are at the same level for the wooden roof construction with 80 mm insulation as for the concrete roof construction with 40 mm insulation. The use of a wooden roof construction with 160 mm insulation is also comparable with the concrete roof construction with 80 mm insulation. The 80 mm and 160 mm insulated wooden roof construction would however have advantages in the winter situation as regard to heat loss. It would be relevant to conduct further investigations of the impact of thermal mass and insulation.

- The maximum temperature during the summer period is approximately the same for all 4 roof construction types.

- The investigation also finds that the solution with roof windows in combination with a façade window provides a better ventilation possibility during the summer period, due to the stack effect and cross ventilation.

## REFERENCES

ENEA (2003). Rapporto Energia e Ambiente 2003, dati, Vol. 2.  
 Edward Marzia (1980). Sistemi solari passivi, Padova, Franco Muzzio & c. Editore.  
 Martin W. Liddament (1996). A Guide to Energy Efficient Ventilation, Annex V AIVC – Coventry (UK)  
 Monica Lavagna (2005). Isolare senza eccessi – Modulo, Progetto Tecnologia Prodotto, n°309, Milano, BE-MA Editrice.  
 Jhon R. Goulding, J. Owen Lewis, Theo C. Steemers (1994). Energy in Architecture – The European Passive Solar Handbook, Batsford for the Commission of the European Communities, London W1H 0AH, Ed. B.T. Batsford Limited.  
 Jaime Lòpez de Asiain (1996). Vivienda Social Bioclimatica- Un nuevo barrio en Osuna, Textos de Arquitectura, Escuela Tecnica Superior de Arquitectura de Se villa, Ed. Artes Gráficas Gandolfo- Se villa.  
 Wienke. Manuale di Bioedilizia, Ed. DEI  
 Riccardo Roda, Stefano Marchigiani (1991). Edilizia residenziale a basso consumo energetico, Firenze, Ed. Alinea.  
 B. Givoni (1969). Man, Climate and Architecture, London, Applied Science Publisher Ltd .  
 Benedetta Abbottoni (1998-99). Edilizia Residenziale Pubblica con criteri di sostenibilità, Tesi di Laurea. Victor Olgyay, Ed. Muzzio (1981). Progettare con il clima, Padova.  
 Cristina Benedetti (1994). Manuale di architettura bioclimatica, Rimini, Ed. Maggioli.  
 David Anink et al (1996). Handbook of Sustainable-Building, London, James and James.  
 ESRU. The ESP-r System for Building Energy Simulation, User Guide Version 10.2, University of Strathclyde.