

Epilepsy with auditory features

A heterogeneous clinico-molecular disease

OPEN

Tommaso Pippucci, PhD
Laura Licchetta, MD
Sara Baldassari, BSc
Flavia Palombo, BSc
Veronica Menghi, MD
Romina D'Aurizio, PhD
Chiara Leta, MD
Carlotta Stipa, MD
Giovanni Boero, MD
Giuseppe d'Orsi, MD
Alberto Magi, PhD
Ingrid Scheffer, PhD, MD
Marco Seri, MD
Paolo Tinuper, MD
Francesca Bisulli, PhD,
MD

ABSTRACT

Objective: To identify novel genes implicated in epilepsy with auditory features (EAF) in phenotypically heterogeneous families with unknown molecular basis.

Methods: We identified 15 probands with EAF in whom an *LG11* mutation had been excluded. We performed electroclinical phenotyping on all probands and available affected relatives. We used whole-exome sequencing (WES) in 20 individuals with EAF (including all the probands and 5 relatives) to identify single nucleotide variants, small insertions/deletions, and copy number variants.

Results: WES revealed likely pathogenic variants in genes that had not been previously associated with EAF: a *CNTNAP2* intragenic deletion, 2 truncating mutations of *DEPDC5*, and a missense *SCN1A* change.

Conclusions: EAF is a clinically and molecularly heterogeneous disease. The association of EAF with *CNTNAP2*, *DEPDC5*, and *SCN1A* mutations widens the phenotypic spectrum related to these genes. *CNTNAP2* encodes CASPR2, a member of the voltage-gated potassium channel complex in which *LG11* plays a role. The finding of a *CNTNAP2* deletion emphasizes the importance of this complex in EAF and shows biological convergence. *Neurol Genet* 2015;1:e5; doi: 10.1212/NXG.000000000000005

GLOSSARY

ADEAF = autosomal dominant EAF; **CADD** = Combined Annotation-Dependent Depletion; **CNV** = copy number variant; **EAF** = epilepsy with auditory features; **FS** = febrile seizure; **GEFS+** = generalized epilepsy with febrile seizures plus; **InDels** = insertions and deletions; **OMIM** = Online Mendelian Inheritance in Man; **RVIS** = Residual Variation Intolerance Score; **SNV** = single nucleotide variant; **VGKC** = voltage-gated potassium channel; **WES** = whole-exome sequencing.

Epilepsy with auditory features (EAF) is an uncommon presentation of focal epilepsy characterized by focal seizures with auditory auras and symptoms suggesting lateral temporal onset.¹ EAF is the hallmark of autosomal dominant EAF (ADEAF),¹⁻³ a familial epilepsy syndrome due to mutations of the leucine-rich, glioma-inactivated 1 (*LG11*) gene (Online Mendelian Inheritance in Man [OMIM] *604619)⁴ in 50% of families.⁵ In ADEAF, affected members typically have EAF, although to make the diagnosis only 2 family members need to have EAF, irrespective of their degree of relatedness and the total number of individuals with epilepsy in the family.^{5,6}

EAF also occurs in sporadic cases or in pedigrees with no *LG11* mutation. In these pedigrees, EAF is indistinguishable from *LG11*-positive ADEAF. However, the pattern of inheritance may be unclear, there may be phenotypic heterogeneity and EAF may occur in only a minority of cases. Such families do not usually fulfill the criteria for any specific familial epilepsy syndrome.

Supplemental data
at Neurology.org/ng

From the U.O. Medical Genetics (T.P., M.S.), Polyclinic Sant'Orsola-Malpighi, Bologna, Italy; Department of Medical and Surgical Sciences (S.B., F.P., M.S.) and Department of Biomedical and Neuromotor Sciences (L.L., V.M., C.L., C.S., P.T., F.B.), University of Bologna, Bologna, Italy; IRCCS Istituto delle Scienze Neurologiche di Bologna (L.L., V.M., C.L., C.S., P.T., F.B.), Bologna, Italy; Laboratory of Integrative Systems Medicine (LISM) (R.D'A.), Institute of Informatics and Telematics and Institute of Clinical Physiology, National Research Council, Pisa, Italy; S.C. of Neurology (G.B.), SS. Annunziata Hospital, Taranto, Italy; Epilepsy Centre (G.d'O.), Clinic of Nervous System Diseases, University of Foggia, Riuniti Hospital, Foggia, Italy; Department of Clinical and Experimental Medicine (A.M.), University of Florence, Florence, Italy; and Florey Institute (I.S.), University of Melbourne, Austin Health and Royal Children's Hospital, Melbourne, Australia.

Funding information and disclosures are provided at the end of the article. Go to Neurology.org/ng for full disclosure forms. The Article Processing Charge was paid by the authors.

This is an open access article distributed under the terms of the Creative Commons Attribution-Noncommercial No Derivative 4.0 License, which permits downloading and sharing the work provided it is properly cited. The work cannot be changed in any way or used commercially.

The small size, clinical heterogeneity, and incomplete penetrance displayed by such families with EAF may have hampered gene mapping through traditional approaches, such as linkage analysis. No mutation in genes other than *LGII* has been identified so far in EAF.^{7–10} The advent of next-generation sequencing has made the identification of causal variants possible even in small families. In this study, we describe a comprehensive whole-exome sequencing (WES) approach that enabled us to identify likely pathogenic variants in EAF probands and their affected relatives, demonstrating genetic heterogeneity underlying this epilepsy phenotype.

METHODS Families. From 2001 to 2014, we recruited consecutive probands with EAF and family history of epilepsy (at least 1 relative within 3 degrees of kinship affected with EAF or other epilepsy).

All affected family members underwent phenotyping, including medical and seizure history, neurologic examination, EEG recordings, and brain MRI. Previous medical records were obtained.

Standard protocol approvals, registrations, and patient consents. We received approval from institutional ethical standards committee on human experimentation, and written informed consent was obtained from all patients participating in the study or their parents in the case of minors.

Molecular genetic analysis. WES was performed on 20 individuals: 15 probands and 5 relatives with EAF. DNA was extracted from peripheral blood using the QIAamp DNA Blood Mini Kit (Qiagen, Venlo, the Netherlands) following the manufacturer's protocol. Whole-exome DNA was captured using the NimbleGenSeqCap EZ Exome v3 array (Nimblegen Inc., Madison, WI) and sequenced as 91-bp paired-end reads on the Illumina HiSeq2000 platform (Illumina Inc., Santa Clara, CA) at Beijing Genomic Institute (Shenzhen, China). Reads were processed following a general analysis pipeline described elsewhere.¹¹

Single nucleotide variants (SNVs) and small insertions and deletions (InDels) were called with the Genome Analysis ToolKit,¹² and copy number variants (CNVs) were called from WES data using EXCAVATOR.¹³ Among SNVs and InDels, nonsynonymous SNVs, splice-site substitutions, and coding small insertions/deletions with a population allele frequency <1% in public databases (1000 Genomes, <http://www.1000genomes.org>; Exome Variant Server, <http://evs.gs.washington.edu/EVS/>; ExAC, <http://exac.broadinstitute.org>) and absent from approximately 200 patients without epilepsy in our internal exome database were considered further.

The priority assigned to variants was higher in those with a lower Residual Variation Intolerance Score (RVIS) percentile (indicating greater intolerance to functional variation)¹⁴ and in those predicted to have a likely functional effect by Combined Annotation-Dependent Depletion (CADD) score¹⁵ (higher CADD scores indicate that the variant is more likely to be functionally relevant), or predicted to alter splicing or to be protein-truncating (frame-shift InDels or nonsense SNVs). Among CNVs, a higher priority was assigned to events that

were not observed to occur in regions known to be involved in segmental duplications or were rare (allele frequency <1%) in the Database of Genomic Variants (<http://dgv.tcag.ca/dgv/app/home>) by manual inspection. When WES of 2 affected members of the family (table 1) had been performed, only the variants shared by the 2 were retained.

Validation and segregation analysis of candidate variants and CNVs were performed using Sanger sequencing and quantitative PCR analyses, respectively, following standard protocols.

RESULTS We included 12 consecutive probands of Italian ancestry attending the Epilepsy Center of our Institute in Bologna. Three additional cases were referred by 2 other epilepsy centers in Italy. A mutation or CNV of *LGII*¹⁶ was excluded in all 15 probands with EAF. Pedigree analysis revealed a total of 34 affected relatives: 6 with EAF (in the 5 families A, D, G, H, and I in table 1) and 28 with other epilepsy (table 1). Two families have been previously reported,^{6,17} while the remaining 13 pedigrees are described here for the first time.

Molecular genetic findings in 344 “epilepsy genes.” To analyze WES data, we initially focused on a set of 344 genes (table e-1 at Neurology.org/ng) implicated in monogenic disorders including epilepsy as a phenotypic feature based on previously published work¹⁸ and the OMIM database (www.omim.org). We identified 7 candidate variants of 5 genes, each in one of 7 families. These variants were validated in every individual who underwent exome testing. We then tested segregation in all the available family members, both unaffected and affected by EAF or other epilepsies, who had no WES performed. After testing segregation, 6 variants remained: 1 CNV in *CNTNAP2* (contactin-associated protein-like 2; OMIM *604569), 1 SNV and 1 InDel in *DEPDC5* (DEP domain-containing protein 5; OMIM *614191), 1 SNV in *SCN1A* (sodium channel, voltage-gated, type 1, alpha subunit; OMIM *182389), 1 SNV in *CACNA1H* (calcium channel, voltage-dependent, T type, alpha-1H subunit; OMIM *607904), and 1 SNV in *RELN* (REELIN, OMIM *600514).

Likely pathogenic variants. *CNTNAP2.* An intragenic deletion of *CNTNAP2* (p.Gln33Argfs*7) was identified in both the affected members of family A (figure 1). The proband (A:IV:1), aged 47 years, presented at 9 years with episodes characterized by confusion, distortion of voices, and inability to speak, occasionally followed by a bilateral tonic-clonic seizure. From 37 years of age, she had an aura of the noise of a train followed by an aphasic phase and sometimes twitching of her mouth and left arm, drooling, and head deviation to the right. Interictal EEG showed left temporal theta activity, and brain MRI was unremarkable. Her father (A:III:1) experienced seizures

Table 1 Clinical features of the affected members belonging to the 15 pedigrees

Family	No. affected	M/F	Kinship	Mean age, y	Mean age at onset, y (range)	Epilepsy, no. of individuals							No./no. individuals tested	
						EAF	Other focal	Unclassified ^a	GS	EE	FS	SG	EEG epileptiform	Brain MRI abnormalities
A ^b	3	2/1	I, III	63	12 (9-15)	2	—	1	—	—	—	2	0/1	0/1
B	3	0/3	I, II	25.3	10 (9-12)	1	2 (T; ns)	—	—	—	—	1	1/3	0/3
C	3	0/3	I, ≥IV	45	6.2 (6 mo-12)	1	1 (T)	1	—	—	2	1	1/1	0/2
D ^b	10	3/7	I, ≥IV	37.8	4.5 (2-12)	2	1 (T-P-O)	—	3	1	6	3	4/6	0/4
E	2	0/2	I	50	25 (14-36)	1	—	1	—	—	—	1	0/1	0/1
F	2	2/0	II	52	16 (on 1)	1	—	1	—	—	—	1	0/1	0/1
G ^b	4	3/1	I, ≥IV	46.25	21.25 (15-27)	3	—	1	—	—	1	2	2/4	0/2
H ^b	3	2/3	I	61	31.6 (22-46)	2	—	1	—	—	—	2	0/3	0/3
I ^b	2	0/2	I	46.5	12 (6-18)	2	—	—	—	—	—	2	1/1	1/1
J	2	0/2	I	49	17 (13-21)	1	1 (T)	—	—	—	—	2	1/2	0/2
K	2	0/2	III	50.5	37 (14-60)	1	—	1	—	—	—	1	2/2	0/2
L	3	2/1	I, III	60.5	10 (6-14)	1	—	2	—	—	1	1	1/1	1/1
M	4	0/4	I, III, ≥IV	44.3	12 (10-16)	1	—	3	—	—	—	1	1/1	0/1
N	2	1/1	II	36.5	10 (7-13)	1	—	1	—	—	—	1	0/1	0/1
O	4	0/4	I, III, ≥IV	35.3	19 (5-33)	1	2 (F/T; T)	1 (na)	—	—	—	2	1/3	0/2

Abbreviations: EAF = epilepsy with auditory features; EE = epileptic encephalopathy; F/T = frontal or temporal; FS = febrile seizure; GS = generalized seizures (including absence seizures, primarily generalized tonic-clonic seizures); na = not available; ns = not specific (aura: anticipation); SG = focal seizures with secondary generalization; T = temporal; T-P-O = temporo-parieto-occipital.

^aUnclassified epilepsy includes tonic-clonic seizures, unknown whether primary or secondary generalized.

^bFamilies with at least 2 members with EAF.

with auditory phenomena and rare bilateral tonic-clonic seizures from 15 to 18 years. The CNV of *CNTNAP2* identified spans about 270 kb across exons 2-3 and is predicted to produce an out-of-frame transcript p.Gln33Argfs*7 (NM_014141:c.98_402del) and to result in loss of function.

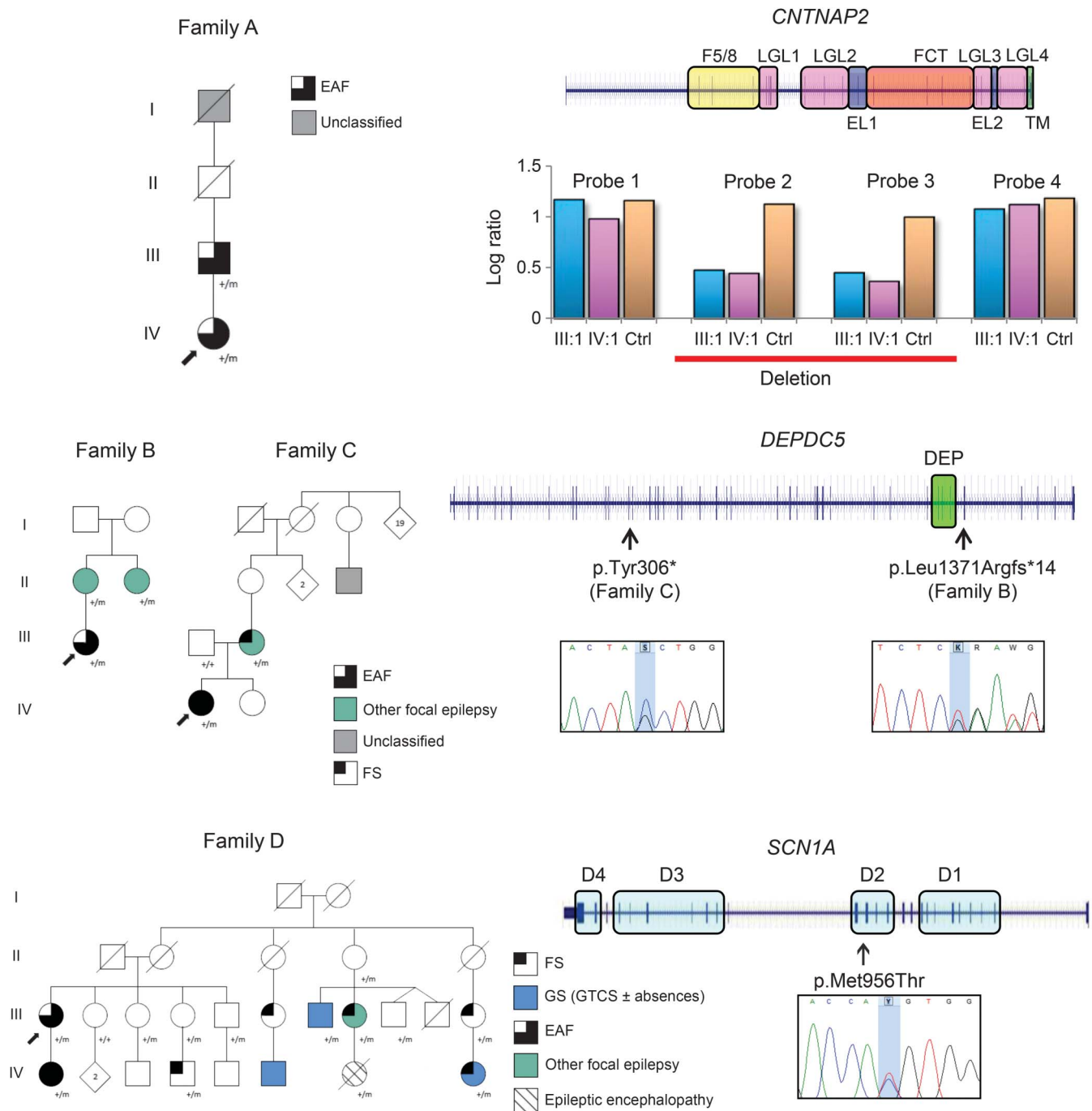
DEPDC5. Two different truncating mutations of *DEPDC5* were found in 2 probands. Both *DEPDC5* variants were predicted to be loss-of-function alleles.

A single base out-of-frame deletion p.Leu1371Argfs*14 (NM_001136029:c.4112delT) was detected in 3 affected members of family B (figure 1). The proband (B:III:1) with EAF had onset at 12 years of episodes comprising “a sensation of a whistle in the right ear,” sometimes associated with a rising epigastric sensation and followed by impairment of awareness and gestural automatism. Interictal EEG showed bitemporal theta activity. The other 2 affected members have other types of focal epilepsy. Her mother (B:II:1) developed focal seizures at 9 years characterized by a rising epigastric sensation and autonomic phenomena followed by impaired awareness and head deviation. Her maternal aunt (B:II:2) experienced focal seizures from 9 years that began with a nonspecific aura and sometimes evolved to a bilateral tonic-clonic seizure. Her EEG showed right temporal sharp wave complexes.

In family C (figure 1), we identified a stop-gain substitution p.Tyr306*(NM_001136029:c.C918G). The proband (C:IV:1) had a single febrile seizure (FS) at 6 months of age and then had rare right tonic seizures, occasionally followed by a bilateral tonic-clonic seizure, predominantly during sleep until 2 years of age. Since childhood, she has also had seizures preceded by auditory phenomena and/or déjà vécu, sometimes followed by impaired consciousness. By 29 years, seizures occurred weekly, despite trials of several antiepileptic drugs. Interictal EEG showed bitemporal theta activity. Her mother (C:III:2) had FSs at 2 years and focal seizures beginning with visual phenomena, déjà vu, and an epigastric aura between 12 and 35 years. Brain MRI was normal in all patients from both families.

SCN1A. In family D (figure 1), a missense change p.Met956Thr (NM_001165963:c.T2867C) of *SCN1A* was identified in the proband (D:III:1) and her daughter (D:IV:1) with EAF. The family comprised 10 affected members (3 male, 7 female; mean age at onset: 4.5 years, range: 2–12). Seven had epilepsy (D:III:1, D:III:7, D:III:8, D:IV:1, D:IV:6, D:IV:7, and D:IV:8), while 3 had FSs alone (D:III:6, D:III:11, and D:IV:4). In addition to individuals D:III:1 and D:IV:1 with EAF, 1 patient had focal epilepsy (D:III:8), 3 had generalized seizures in

Figure 1 Segregation and localization of the identified variants



Pedigrees of the mutated families with mutations and schematic representation of the genes and the identified variants are presented. Phenotype labels: EAF = epilepsy with auditory features; GTCS = generalized tonic-clonic seizures; GS = generalized seizures; FS = febrile seizures; unclassified: it is undetermined whether the seizure type is focal or generalized. Gene diagrams and variants: blue lines represent the genomic regions spanned by the gene, while the blue bars represent the exons. Colored blocks surrounding gene regions correspond to the protein domains encoded by the embedded exons. DEP = Dishevelled, Egl-10 and Pleckstrin domain; D1-4 = domains 1-4; F5/8 = discoidin domain; LGL = laminin G-like domain; EL = EGF-like domain; FCT = fibrinogen C-terminal domain; TM = transmembrane domain. The probands' Sanger sequencing electropherogram surrounding the variant site is reported. The histogram plot represents the result of the real-time PCR. Log₂ratios of $\Delta\Delta C_t$ from patient A:III:1, patient A:IV:1, and a normal individual each against a control sample are plotted. The control sample is one that was negative for *CNTNAP2* rearrangements by array comparative genomic hybridization analyses. Four probes were tested. Probe 1 and probe 2 are located in intron 1, while probe 3 and probe 4 are located in intron 3.

childhood (D:III:7, D:IV:6, and D:IV:8), and 1 had infantile epileptic encephalopathy (D:IV:7). Three of the family members with epilepsy had a history of prolonged FSs (D:III:8, D:IV:1, and D:IV:8). The

SCN1A change segregated with affected status in this large pedigree. There was incomplete penetrance (61.5%) since 2 unaffected obligate carriers (D:II:4 and D:III:4) and 3 healthy individuals (D:III:3,

D:III:5, and D:III:9) were heterozygous for the mutation. The same mutation has been recently reported in a family with intractable childhood epilepsy with generalized tonic-clonic seizures where it was described as a loss-of-function, fully penetrant allele that led to incorrect folding of the alpha 1 subunit of the voltage-gated sodium channel type 1 (Nav1.1) encoded by *SCN1A*.¹⁹

Variants of unclear significance. *CACNA1H*. A missense change p.Arg1669Gln (NM_001005407:c.G5006A) of *CACNA1H* was identified in the 38-year-old proband of family E (table 1).

The *CACNA1H* SNV identified was inherited by her mother (E:I:1), who experienced sleep-related bilateral tonic-clonic seizures at 36 years of age. Rare amino acid substitutions altering function of the channel encoded by *CACNA1H* have been reported in families with predominantly generalized epilepsies, as well as temporal lobe epilepsy.²⁰ The present change was potentially deleterious (table e-2). Functional assessment of the pathogenic potential was not performed as part of this study but is needed to confirm a causal role.

RELN. A missense change p.Asp3323Glu (NM_005045:c.T9969G) of *RELN* was identified in the 52-year-old proband of family F (table 1). Segregation of the variant could not be tested since no relative was available for this study. The father's grandfather, who was the only other affected member of the family (table 1), was already deceased at the time of enrollment. *RELN* encodes reelin, which is essential for cerebral cortex development and synaptic function in the adult brain.²¹ Homozygous recessive loss-of-function *RELN* alleles have been shown to cause lissencephaly²² (OMIM #257320), while heterozygous variants have been purported to play a role in neuropsychiatric disorders.²¹ Reelin is a huge protein (3460 aa, Uniprot ID P78509). Although *RELN* is highly intolerant to functional variation and the present variant is potentially deleterious (table e-2), many rare missense variants accumulate in *RELN* (ExAC database). Due to the lack of segregation testing and uncertainty of its functional effect, we cannot assess a causal role of this heterozygous variant.

Possible novel candidate genes. We further analyzed WES data looking at variants in genes beyond the initial set. In order to identify possible candidates for EAF, we examined variants within genes shared by at least 2 unrelated probands. We validated and tested the segregation of variants in 4 genes, selected based on the lowest RVIS scores and the highest pathogenic potential. After testing the segregation, only the echinoderm microtubule associated protein-like 6 gene (*EML6*) remained as a possible candidate gene. *EML6* showed a novel p.Ala186fs frameshift event (c.558delA) in family M and a rare p.Thr918Ala

missense variant (c.A2752G) in family F (table e-2). The function of *EML6* is largely unknown, and apart from its reported expression in cerebral temporal cortex (<http://www.braineac.org/>), no data support its possible dysfunction being implicated in epilepsy. Moreover, a major role in disease for any of the variants in *EML6* and *RELN*, which have both been found in family F, is difficult to ascertain. Study of larger cohorts will be needed to assess whether this gene can contribute to EAF.

DISCUSSION In this study, we describe defects in novel genes contributing to the genetic architecture of EAF. We identified likely pathogenic genetic variants in 4 of 15 unrelated EAF probands: an intragenic deletion of *CNTNAP2*, 2 truncating mutations of *DEPDC5*, and 1 missense mutation in *SCN1A*. All genes have been previously associated with other forms of focal epilepsy but not EAF.^{23–26} Several factors support the pathogenicity of the identified mutations, including their rarity, their predicted deleterious nature, their segregation with affected status within kindreds, and the recognized role of mutations of these genes in the etiology of the associated epilepsies. In these families, EAF is a phenotype that occurs in few (often the minority) of the affected members. Such phenotypically heterogeneous families are generally of small size and have usually been considered poorly informative for genetic studies, as recurrence of the disease tends to be low, expressivity of the phenotype widely variable, and penetrance reduced. These families likely reflect the more common scenario in clinical practice compared with the rare familial epilepsy syndrome of ADEAF. *LGII* mutations are associated with ADEAF in about half of the large multigenerational families displaying autosomal dominant inheritance of EAF. However, *LGII* mutations have been rarely detected in pedigrees with EAF and a less clear-cut pattern of inheritance or phenotypic heterogeneity.⁵

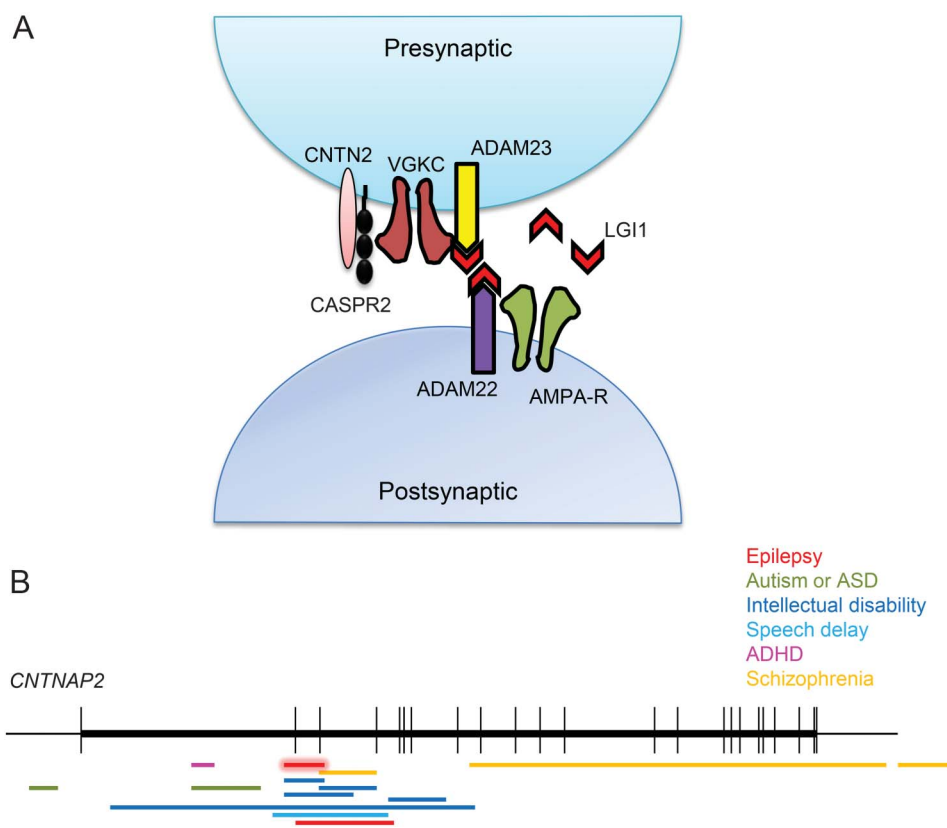
The discovery of *DEPDC5* mutations in 2 of 15 probands is in line with the frequency of *DEPDC5* mutations observed in other focal epilepsies (around 10%).^{23,27} The 2 identified *DEPDC5* mutations (c.C918G and c.4112delT) are loss-of-function events, both predicted to generate a prematurely truncated product. These mutated transcripts likely undergo nonsense-mediated decay leading to haploinsufficiency, which is the main mechanism believed to underlie pathogenesis.^{23,28} These results enlarge the *DEPDC5*-related phenotypic spectrum to include EAF with lateral temporal lobe semiology, further strengthening the emerging association of defects in this gene with a broad range of focal epilepsies. It could be anticipated that different epilepsy phenotypes, including EAF, will be associated with *DEPDC5* mutations in other small families.

Similarly, the discovery of an *SCN1A* c.T2867C change in family D widens the already large compendium of epilepsy phenotypes associated with *SCN1A* mutations. In this interesting pedigree, the EAF phenotype is limited to the proband and her daughter, but expanding the clinical and genetic study of this family allowed us to define the diagnosis of the familial epilepsy syndrome of generalized epilepsy with febrile seizures plus (GEFS+). *SCN1A* has been implicated in different epilepsy syndromes ranging from GEFS+²⁹ to Dravet syndrome (OMIM #607208)³⁰ and occasionally includes focal seizures.^{24,25} Lateral temporal semiology with auditory symptoms due to *SCN1A* mutation has not been previously reported, and our findings indicate EAF as a novel phenotype within the *SCN1A* phenotypic spectrum.

Mutations in *SCN1A* and *DEPDC5* result in specific epilepsy syndromes, whereas *CNTNAP2* is disrupted in a broad range of neurologic conditions^{31–33} in which seizures play a part.²⁶ Diallelic loss of normal *CNTNAP2* has been linked to complex phenotypes, including cortical dysplasia and focal epilepsy,^{34,35} but

most of the disruptive events involving *CNTNAP2* are heterozygous and show incomplete penetrance. These include heterogeneous alterations ranging from intronic/exonic deletions to splice-site mutations and truncating and missense changes. Family A consists of a nuclear pedigree with only 2 affected members, father and daughter, who both have EAF. The exon 2-3 deletion we report, predicted to code for an abnormal product (p.Gln33Argfs*7), lies within the CNV hotspot spanning the *CNTNAP2* exon 2-9 genomic region implicated in complex neuropsychiatric disorders (figure 2). Epilepsy or seizures are reported in many of the patients with this deletion, but they are not commonly the primary diagnosis and are therefore not described in detail. Accurate epilepsy phenotyping in these patients may reveal other EAF cases associated with deletions of this gene. Neither affected member of family A showed features of intellectual disability, speech delay, or psychiatric disturbances. Notably, *CASPR2*, the protein product of *CNTNAP2*, and *LG11* are closely associated with the voltage-gated potassium channel (VGKC) complex in the human brain (figure 2),³⁶ and *LG11* has

Figure 2 The *CNTNAP2* locus in disease and localization of its encoded product, *CASPR2*, at the synapse



(A) Schematic indicating the functional relationship linking *LG11* and *CASPR2* proteins through the voltage-gated potassium channel (VGKC). (B) Schematic indicating the previously reported microdeletions (horizontal bars) of *CNTNAP2* in neuropsychiatric conditions (modified from Rodenas-Cuadrado, 2013). The deletion reported in this study, spanning *CNTNAP2* exons 2-3, overlaps most of the *CNTNAP2* deletions implicated in disorder before. It is represented in red with a halo surrounding it. ADHD = attention-deficit/hyperactivity disorder; ASD = autism spectrum disorder.

been found to be part of the CASPR2 interactome.³⁷ This functional relationship highlights the possible molecular link between *CNTNAP2* disruption and the EAF phenotype. Haploinsufficient *Lgi1* in adult rat brains has been demonstrated to cause changes in the inactivation gating of presynaptic A-type channels, of which *Kv1.1* is a major constituent.³⁸ This has been proposed to be the molecular mechanism promoting epileptic activity in patients with defective *LG11* protein. In addition, the predicted haploinsufficiency of *CASPR2*, another protein complexed with *Kv1.1*, may alter channel kinetics. Recently, consistent evidence has shown that mutations in the same gene can increase the risk of a broad range of complex neuropsychiatric disorders.³⁹ This suggests the involvement of genetic or environmental modifiers. Notwithstanding the challenge in interpreting the complexity of *CNTNAP2* genotype-phenotype correlations, the present data together with the accumulated knowledge about *CNTNAP2* mutations and *CASPR2* function strongly suggest that disrupted *CNTNAP2* contributes to EAF in family A. This perspective is fascinating because other pre- or postsynaptic membrane-bound proteins (*ADAM22*, *ADAM23*, and *Kv1* channel genes) have been explored before in search for mutations in EAF, but no mutations were detected.^{8–10}

Additional variants were identified in different genes, either previously implicated in epilepsy (*CACNA1H*, *RELN*) or not (*EML6*), but their actual contribution to EAF cannot be assessed based on our present observations.

Overall, defects in 3 novel genes were associated with EAF. Of the pedigrees in which these mutations were found, 1 with a *CNTNAP2* deletion may have ADEAF, as both affected individuals have the EAF phenotype and the genetic inheritance model is autosomal dominant. The association of ADEAF with a *CNTNAP2* deletion shows biological convergence and opens new perspectives on the contribution of non-LG11 VGKC-complex proteins to the EAF phenotype. The identification of mutations in *DEPDC5* and *SCN1A* in families showing heterogeneous phenotypic patterns enlarges the phenotypic spectrum of the epilepsies associated with these genes. Overall, our results suggest that EAF is an epilepsy phenotype originating from alterations in a heterogeneous group of genes implicated in a broader range of epileptic syndromes or neurologic diseases. This overlap, frequently observed in other forms of epilepsy (e.g., autosomal dominant nocturnal frontal lobe epilepsy),^{27,28} reflects the complexity of the involved molecular mechanisms and reveals the challenge of incorporating the underlying biology into the current classification of epilepsies. This study emphasizes the use of a comprehensive WES strategy, tackling both mutations and CNVs, in

an effort to solve challenging diagnostic puzzles in epilepsy.

AUTHOR CONTRIBUTIONS

Dr. Pippucci, Dr. Licchetta, S. Baldassari, and Dr. Bisulli conceptualized and designed the study and drafted the manuscript. Dr. Menghi, Dr. Leta, Dr. Stipa, Dr. Boero, Dr. d'Orsi, and Dr. Bisulli phenotyped the patients. Dr. Pippucci, Dr. Licchetta, S. Baldassari, F. Palombo, Dr. D'Aurizio, Dr. Magi, and Dr. Bisulli collected, analyzed, and interpreted the data. Dr. Scheffer, Dr. Seri, and Dr. Tinuper critically revised the manuscript for important intellectual content.

ACKNOWLEDGMENT

The authors are grateful to the families for participation in the study, especially to the probands for their valuable assistance during in loco assessment of the family. The authors acknowledge Mrs. Annalia Cesare for secretarial help in keeping in contact with patients, Ms. Elena Zoni for help in manuscript editing, and Dr. Lara Alvisi and the other EEG technicians at our institute for recording the patients. The authors acknowledge the genetic commission of the Italian League Against Epilepsy for discussion of the pedigrees and valuable suggestions for the study design.

STUDY FUNDING

Italian Ministry of Health Young Investigators project GR-2009-1574072 to T.P. and F.B., Telethon Foundation Project GGP13200 to P.T. and T.P.

DISCLOSURE

Dr. Pippucci has worked for Azienda Ospedaliero-Universitaria Careggi and has received research support from the Italian Ministry of Health and Telethon Foundation. Dr. Licchetta reports no disclosures. S. Baldassari has received research support from the Italian Ministry of Health and Telethon Foundation. F. Palombo has received research support from the Italian Ministry of Health and Telethon Foundation. Dr. Menghi, Dr. D'Aurizio, Dr. Leta, Dr. Stipa, Dr. Boero, Dr. d'Orsi, and Dr. Magi report no disclosures. Dr. Scheffer has received funding for travel and/or speaker honoraria from Sanofi, UCB, and Transgenomics; has served on editorial boards for *Neurology*, *Epilepsy Currents*, *Annals of Neurology*, *Epileptic Disorders*, *Progress in Epileptic Disorders* series, and *Virtual Neuro Centre*; holds patents for methods of treatment and diagnosis of epilepsy by detecting mutations in the *SCN1A* gene, A Diagnostic Method for Epilepsy (also published as Methods for the Diagnosis and Treatment of Epilepsy), Mutations in Ion Channels, Diagnostic and Treatment Methods Relating to Autosomal Dominant Nocturnal Frontal Lobe Epilepsy and pending patents for gene and mutations thereof associated with seizure disorders, gene and mutations thereof associated with seizure and movement disorders, and diagnostic and therapeutic methods for EFMR; and has received research support from NHMRC, NIH, The University of Melbourne, Austin Health Medical Research Foundation, Melbourne Neurosciences Institute, Weizmann Institute, CURE SUDEP, and Perpetual Philanthropic Services. Dr. Seri reports no disclosures. Dr. Tinuper has served on scientific advisory boards of UCB Pharma and Cyberonics; has received funding for travel and/or speaker honoraria from Cyberonics; and has served on the editorial board of *Seizures*. Dr. Bisulli has received research support from the Italian Ministry of Health Young Investigators and Telethon. Go to Neurology.org/ng for full disclosure forms.

Received March 18, 2015. Accepted in final form April 2, 2015.

REFERENCES

1. Ottman R, Risch N, Hauser WA, et al. Localization of a gene for partial epilepsy to chromosome 10q. *Nat Genet* 1995;10:56–60.
2. Berg AT, Berkovic SF, Brodie MJ, et al. Revised terminology and concepts for organization of seizures and epilepsies: report of the ILAE Commission on Classification and Terminology, 2005–2009. *Epilepsia* 2010;51:676–685.

3. Morante-Redolat JM, Gorostidi-Pagola A, Piquer-Sirerol S, et al. Mutations in the LGI1/Epitempin gene on 10q24 cause autosomal dominant lateral temporal epilepsy. *Hum Mol Genet* 2002;11:1119–1128.
4. Kalachikov S, Evgrafov O, Ross B, et al. Mutations in LGI1 cause autosomal-dominant partial epilepsy with auditory features. *Nat Genet* 2002;30:335–341.
5. Ottman R, Winawer MR, Kalachikov S, et al. LGI1 mutations in autosomal dominant partial epilepsy with auditory features. *Neurology* 2004;62:1120–1126.
6. Michelucci R, Pasini E, Malacrida S, et al. Low penetrance of autosomal dominant lateral temporal epilepsy in Italian families without LGI1 mutations. *Epilepsia* 2013;54:1288–1297.
7. Bisulli F, Naldi I, Baldassari S, et al. Autosomal dominant partial epilepsy with auditory features: a new locus on chromosome 19q13.11-q13.31. *Epilepsia* 2014;55:841–848.
8. Chabrol E, Gourfinkel-An I, Scheffer IE, et al. Absence of mutations in the LGI1 receptor ADAM22 gene in autosomal dominant lateral temporal epilepsy. *Epilepsy Res* 2007;76:41–48.
9. Diani E, Di Bonaventura C, Mecarelli O, et al. Autosomal dominant lateral temporal epilepsy: absence of mutations in ADAM22 and Kv1 channel genes encoding LGI1-associated proteins. *Epilepsy Res* 2008;80:1–8.
10. Rigon L, Vettori A, Busolin G, et al. ADAM23, a gene related to LGI1, is not linked to autosomal dominant lateral temporal epilepsy. *Epilepsy Res Treat* 2011;2011:258365.
11. Magini P, Pippucci T, Tsai IC, et al. A mutation in PAK3 with a dual molecular effect deregulates the RAS/MAPK pathway and drives an X-linked syndromic phenotype. *Hum Mol Genet* 2014;23:3607–3617.
12. DePristo MA, Banks E, Poplin R, et al. A framework for variation discovery and genotyping using next-generation DNA sequencing data. *Nat Genet* 2011;43:491–498.
13. Magi A, Tattini L, Cifola I, et al. EXCAVATOR: detecting copy number variants from whole-exome sequencing data. *Genome Biol* 2013;14:R120.
14. Petrovski S, Wang Q, Heinzen EL, Allen AS, Goldstein DB. Genic intolerance to functional variation and the interpretation of personal genomes. *PLoS Genet* 2013;9:e1003709.
15. Kircher M, Witten DM, Jain P, O’Roak BJ, Cooper GM, Shendure J. A general framework for estimating the relative pathogenicity of human genetic variants. *Nat Genet* 2014;46:310–315.
16. Magini P, Bisulli F, Baldassari S, et al. LGI1 microdeletions are not a frequent cause of partial epilepsy with auditory features (PEAF). *Epilepsy Res* 2014;108:972–977.
17. Bisulli F, Tinuper P, Avoni P, et al. Idiopathic partial epilepsy with auditory features (IPEAF): a clinical and genetic study of 53 sporadic cases. *Brain* 2004;127:1343–1352.
18. Lemke JR, Riesch E, Scheurenbrand T, et al. Targeted next generation sequencing as a diagnostic tool in epileptic disorders. *Epilepsia* 2012;53:1387–1398.
19. Bechi G, Rusconi R, Cestè S, Striano P, Franceschetti S, Mantegazza M. Rescuable folding defective Na(V)1.1 (SCN1A) mutants in epilepsy: properties, occurrence, and novel rescuing strategy with peptides targeted to the endoplasmic reticulum. *Neurobiol Dis* 2015;6:100–114.
20. Heron SE, Khosravani H, Varela D, et al. Extended spectrum of idiopathic generalized epilepsies associated with CACNA1H functional variants. *Ann Neurol* 2007;62:560–568.
21. Folsom TD, Fatemi SH. The involvement of Reelin in neurodevelopmental disorders. *Neuropharmacology* 2013;68:122–135.
22. Hong SE, Shugart YY, Huang DT, et al. Autosomal recessive lissencephaly with cerebellar hypoplasia is associated with human RELN mutations. *Nat Genet* 2000;26:93–96.
23. Dibbens LM, de Vries B, Donatello S, et al. Mutations in DEPDC5 cause familial focal epilepsy with variable foci. *Nat Genet* 2013;45:546–551.
24. Abou-Khalil B, Ge Q, Desai R, et al. Partial and generalized epilepsy with febrile seizures plus and a novel SCN1A mutation. *Neurology* 2001;57:2265–2272.
25. Colosimo E, Gambardella A, Mantegazza M, et al. Electroclinical features of a family with simple febrile seizures and temporal lobe epilepsy associated with SCN1A loss-of-function mutation. *Epilepsia* 2007;48:1691–1696.
26. Rodenas-Cuadrado P, Ho J, Vernes SC. Shining a light on CNTNAP2: complex functions to complex disorders. *Eur J Hum Genet* 2014;22:171–178.
27. Picard F, Makrythanasis P, Navarro V, et al. DEPDC5 mutations in families presenting as autosomal dominant nocturnal frontal lobe epilepsy. *Neurology* 2014;82:2101–2106.
28. Ishida S, Picard F, Rudolf G, et al. Mutations of DEPDC5 cause autosomal dominant focal epilepsies. *Nat Genet* 2013;45:552–555.
29. Escayg A, MacDonald BT, Meisler MH, et al. Mutations of SCN1A, encoding neuronal sodium channel, in two families with GEFS+2. *Nat Genet* 2000;24:343–345.
30. Claes L, Del-Favero J, Ceulemans B, et al. De novo mutations in the sodium-channel gene SCN1A cause severe myoclonic epilepsy of infancy. *Am J Hum Genet* 2001;68:1327–1332.
31. Lesca G, Rudolf G, Labalme A, et al. Epileptic encephalopathies of the Landau-Kleffner and continuous spike and waves during slow-wave sleep types: genomic dissection makes the link with autism. *Epilepsia* 2012;53:1526–1538.
32. Gregor A, Albrecht B, Bader I, et al. Expanding the clinical spectrum associated with defects in CNTNAP2 and NRXN1. *BMC Med Genet* 2011;12:106.
33. Friedman JI, Vrijenhoek T, Markx S, et al. CNTNAP2 gene dosage variation is associated with schizophrenia and epilepsy. *Mol Psychiatry* 2008;13:261–266.
34. Strauss KA, Puffenberger EG, Huentelman MJ, et al. Recessive symptomatic focal epilepsy and mutant contactin-associated protein-like 2. *N Engl J Med* 2006;354:1370–1377.
35. Zweier C, de Jong EK, Zweier M, et al. CNTNAP2 and NRXN1 are mutated in autosomal-recessive Pitt-Hopkins-like mental retardation and determine the level of a common synaptic protein in *Drosophila*. *Am J Hum Genet* 2009;85:655–666.
36. Irani SR, Alexander S, Waters P, et al. Antibodies to Kv1 potassium channel-complex proteins leucine-rich, glioma inactivated 1 protein and contactin-associated protein-2 in limbic encephalitis, Morvan’s syndrome and acquired neuromyotonia. *Brain* 2010;133:2734–2748.
37. Chen N, Koopmans F, Gordon A, et al. Interaction proteomics of canonical Caspr2 (CNTNAP2) reveals the presence of two Caspr2 isoforms with overlapping interactomes. *Biochim Biophys Acta Epub* 2015 Feb 21.
38. Schulte U, Thumfart JO, Klöcker N, et al. The epilepsy-linked Lgi1 protein assembles into presynaptic Kv1 channels and inhibits inactivation by Kvbeta1. *Neuron* 2006;49:697–706.
39. Zhu X, Need AC, Petrovski S, Goldstein DB. One gene, many neuropsychiatric disorders: lessons from Mendelian diseases. *Nat Neurosci* 2014;17:773–781.

Neurology[®] Genetics

Epilepsy with auditory features: A heterogeneous clinico-molecular disease

Tommaso Pippucci, Laura Licchetta, Sara Baldassari, et al.

Neurol Genet 2015;1;

DOI 10.1212/NXG.0000000000000005

This information is current as of May 14, 2015

Neurol Genet is an official journal of the American Academy of Neurology. Published since April 2015, it is an open-access, online-only, continuous publication journal. Copyright © 2015 American Academy of Neurology. All rights reserved. Online ISSN: 2376-7839.



Updated Information & Services	including high resolution figures, can be found at: http://ng.neurology.org/content/1/1/e5.full.html
Supplementary Material	Supplementary material can be found at: http://ng.neurology.org/content/suppl/2015/05/14/1.1.e5.DC1.html
References	This article cites 38 articles, 4 of which you can access for free at: http://ng.neurology.org/content/1/1/e5.full.html##ref-list-1
Citations	This article has been cited by 4 HighWire-hosted articles: http://ng.neurology.org/content/1/1/e5.full.html##otherarticles
Subspecialty Collections	This article, along with others on similar topics, appears in the following collection(s): All Epilepsy/Seizures http://ng.neurology.org/cgi/collection/all_epilepsy_seizures All Genetics http://ng.neurology.org/cgi/collection/all_genetics Genetic linkage http://ng.neurology.org/cgi/collection/genetic_linkage Partial seizures http://ng.neurology.org/cgi/collection/partial_seizures
Permissions & Licensing	Information about reproducing this article in parts (figures,tables) or in its entirety can be found online at: http://ng.neurology.org/misc/about.xhtml#permissions
Reprints	Information about ordering reprints can be found online: http://ng.neurology.org/misc/addir.xhtml#reprintsus

Neurol Genet is an official journal of the American Academy of Neurology. Published since April 2015, it is an open-access, online-only, continuous publication journal. Copyright © 2015 American Academy of Neurology. All rights reserved. Online ISSN: 2376-7839.

