



PROCEEDINGS

**ARCHITECTURE,
ARCHAEOLOGY AND
CONTEMPORARY
CITY PLANNING**

«Issues of Scale»

LONDON

22-25th September 2016

London, UK
22-25th September 2016

**ARCHITECTURE,
ARCHAEOLOGY
AND CONTEMPORARY
CITY PLANNING**

“Issues of scale”

PROCEEDINGS

**editors:
James Dixon
Giorgio Verdiani
Per Cornell**

Published on
May 2017

London, UK
22-25th September 2016

Scholar workshop:
ARCHITECTURE, ARCHAEOLOGY AND CONTEMPORARY CITY PLANNING

The workshop took place in London, U+I Offices, 7a Howick Place, Victoria.

Workshop organizing committee:
James Dixon, Giorgio Verdiani, Per Cornell

The workshop has been realized in collaboration between Museum of London Archaeology (MOLA), the Architecture Department of the Florence University, Italy, the Department of Historical Studies, University of Gothenburg, Sweden.



UNIVERSITÀ
DEGLI STUDI
FIRENZE
DIDA
DIPARTIMENTO DI
ARCHITETTURA

Proceedings Editors: James Dixon, Giorgio Verdiani, Per Cornell
jdixon@mola.org.uk / giorgio.verdiani@unifi.it / per.cornell@archaeology.gu.se

Scientists participating at the workshop:

Per Cornell, James Dixon, Liisa Seppänen, Giorgio Verdiani, Matteo Scamporrino, Pia Englund, Anna Frank, Louise Armstrong, Nick Woodford, Valentina Fantini, Laura Polizzi, Neil Korostoff, Oliver Brown, Gwilym Williams, Sophie Jackson, Valerio Massaro, Sabrina Morreale, Ludovica Marinaro, Timothy Murtha, Thomson Korostoff, Giulio Mezzetti, Sarah Jones, Natalie Cohen, Francesco Maria Listi, Katrina Foxton.

PROCEEDINGS INDEX

INDEX

WORKSHOP PRESENTATION

James Dixon, Per Cornell, Giorgio Verdiani 7

VIRTUAL RESEARCH AS A TOOL FOR BOTTOM-UP URBAN DESIGN: THE CASE STUDY OF BIRMINGHAM

Valentina Fantini, Laura Polizzi 13

PHILADELPHIA STREET HIERARCHIES

Thomson Korostoff 25

WHERE THE LONG SHADOWS FALL: URBAN ARCHAEOLOGY IN THE EARLY 20TH CENTURY – STANDARDIZING METHODOLOGIES, LEGISLATION, FINANCE AND PUBLICATION

Oliver Brown, Gwilym Williams 39

A MITHRAEUM FOR A MODERN CITY: REBUILDING THE TEMPLE OF MITHRAS IN LONDON

Sophie Jackson 51

A COMMON GROUND: DESIGNING THROUGH ARCHAEOLOGICAL TOOLS

Valerio Massaro, Sabrina Morreale 59

LANDSCAPE TRANSFORMATION BETWEEN PORT AND CITY. AN INTEGRATED DESIGN APPROACH

Ludovica Marinaro, Matteo Scamporrino 71

FORMATION OF A MEDIEVAL URBAN PLANNING PROCESS USING THE ARCHAEOLOGICAL KNOWLEDGE BASE TO INTERPRET THE URBAN SPACE THROUGH LANDSCAPE ARCHITECTURE AND ART

Anna Wyn-Jones Frank 81

RETHINKING URBAN DENSITY: ARCHAEOLOGY, LOW DENSITY URBANISM AND SUSTAINABILITY

Timothy Murtha 92

ARCHAEOLOGY FOR SUSTAINABILITY

James Dixon 101

3D FLORENCE REPRESENTATION STARTING FROM HISTORICAL MAPS: YESTERDAY'S EYES, TODAY'S TOOLS

Giulio Mezzetti, Matteo Scamporrino 107

**DIGITAL RECORDING AND ARCHAEOLOGY AT KNOLE “MORE TOWN THAN HOUSE”
(VIRGINIA WOOLF, ORLANDO 1928)**

Sarah Jones, Natalie Cohen 121

**THE FORTIFICATION SYSTEM ON THE ELBA ISLAND: ARCHAEOLOGICAL AND TERRITORIAL
EVIDENCE OF THE MEDITERRANEAN TUSCANY**

Mirco Pucci, Giulia Baldi 129

**MILAN AT THE BORDER OF ITS ANCIENT BORDER: FROM THE XVI CENTURY WALL TO THE
BERUTO’S PLAN, TO OUR DAYS**

Francesco Maria Listi 139

CIRCUMNAVIGATING THE CITY: A VIEW FROM MEDIEVAL WALLS

Katrina Foxton 152

**PHYSICAL PLANNING, THE REGION, DEMOCRACY AND THE QUESTIONS OF TIME.
PRELIMINARY REFLECTIONS**

Per Cornell 167

**CONSTRUCTION, CITY PLANNING AND URBAN ARCHAEOLOGY
REFLECTIONS ON THE ROLE OF MONEY IN THE CITY DEVELOPMENT AND ARCHAEOLOGICAL
RESEARCH OF TURKU**

Liisa Seppänen 171

**FROM DECAY AND TOTAL DESTRUCTION TO THE WORST PRACTICE IN CULTURAL
HERITAGE: A REFLECTION ABOUT THE WILL OF LOSING ALL THE TRACES**

Giorgio Verdiani 185

PICTURES FROM THE WORKSHOP

Giorgio Verdiani 212

Pictures from the workshop

Giorgio Verdiani

DiDA (Dipartimento di Architettura) – School of Architecture – University of Florence

Abstract: Behind a conference, behind the proceedings and the book left to testify the complexity and the mountain of ideas flowed in few days, there is always the group of people who debated all the subjects, and their life around the event. So documenting with pictures is a nice way to add something more to the acts, and it is something that can be done with group pictures, with reportage pictures, with casual shots, but most of all it is something that must be done with an effort, the one trying to capture the real essence of visiting and of the people around. In this closing contribution it is possible to see a selected series of images from the workshop, the visited city, but no people posing or common postcards, only few shots to put in order what was done, trying to capture the involvement of the participants in the workshop. All the pictures here are taken and post processed by the author.

Keywords: Photography, Workshop, London.

Social activities: visit to the Queen Elisabeth Olympic Park

A very interesting urban space with many high quality architectures, showing and mixing new and old elements from the recent history of the town, from an industrial past to the contemporary public spaces for entertainment, sport and shopping.

During this tour, the accurate and detailed guide by James Dixon allowed the clear comprehension of the evolution of this part of the town, with the important interaction between the offices of the MOLA and all the operators, James took care about illustrating to all the participants the nodal points of the transformations and the choices taken to bring this place out of the abandon and into a new active dimension. The many courtyards and the relationship between new buildings and their interaction with the ongoing transformation were clearly explained.

All the visit shows a various and rich level of details, accurate construction and planning, the variety of details passes from the one of the new and highly technological building to the one typical of the abandoned architecture with various phases of decay, the overall renewal of the area is clearly readable in a large gradient of transformations, connected gradually and capable to show the ongoing passage from the past industrial activities to













the present evolution into a new expansion of urban social activities.

In the southern area of the visit it is possible to see the overlapping of abandoned architectures and contemporary spontaneous reuse.

The presence of the canal, the interesting quality of the industrial architectures and the mix of street art elements and new skylines create the possibility to have a look to the transformation of the town, from single elements and urban accessories to the evi-

dent traces of the interaction between people leaving in the area or passing by artists and the constructed presences from the past. Many of the new urban assets seem to catch this suggestion, with the integration of single "creative" elements into the general planning of the urban space, signs helping the orientation, signaling a passage that is not free of contaminations and is capable to bring the new image of the area to get some influence from the personalization brought here by an human use that have tried to bring out this



place from a past of simple decay. Coloured elements, new designed objects, accurate landscape drawing create now a

suggestive balance between the new urban-scape, the legacy of the past and the promise of a “new” integrated part of the town.



Visit to the King's Cross / St. Pancras Area

Travelling is the word. This whole area has a large presence of this action. It has a large, historical and almost iconic train station, it is a continuous cross-over for people, it is a place where ideas and intentions may take place and develop. It is large enough to require a small trip to be completely visited. In the same place there are two levels of perception of the sense of travelling: one



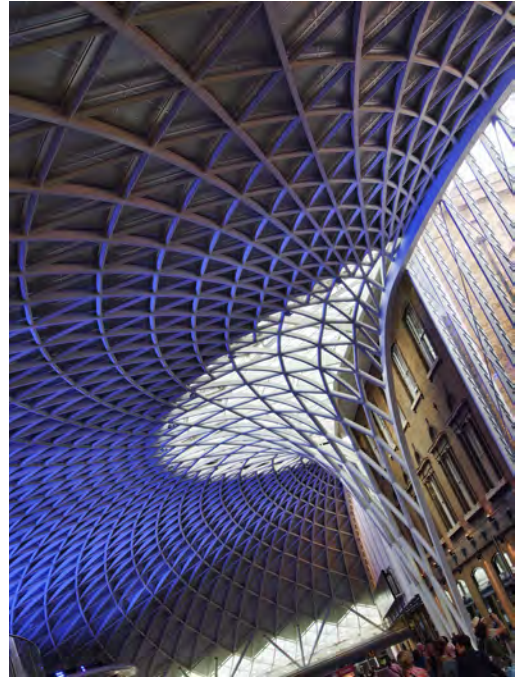




is really real, the possibility to take a train or to connect to the urban network of bus, underground, taxi, etc... and another which is completely symbolic, statues, the resto-

ration of certain elements and the insertion of many new ones, some "pop" event, like the "platform 9 3/4" recalling the novel and movies "Harry Potter" and getting a lot of





popular attention for a picture to be taken at the end, in the middle or at the beginning of a journey or of a holiday. The changes in the station have created a new condition, a modern space for shopping, walking, looking around, arriving and leaving. The lower levels of the train pavilions are now

opened and host the commercial and service spaces, expanding the overall size of the architecture, but keeping all the original features, this intervention preserves a lot of the original aspects of this building, but at the same time it brings it to be a contemporary urban system in full integration with



the city all around. The large King's Cross area surrounds and find all the possible integration with the station, opening new pedestrian passages and areas, with very large and open spaces were most of the

time is the same presence of people to be the main character. The presence of canals, with real functions and nice connection to many buildings complete and enrich both the network of suggestions to the theme of





the journey and the connection to a former London, made of commerce and industrial / practical activities all along the waterways. At many levels the perception of the sense of the journey permeate this urban sector

and all the architectures and point of view seem to come back to flowing flux of people moving from a location to another, with a continuous exchange between many different places that creates a wonderful variety.

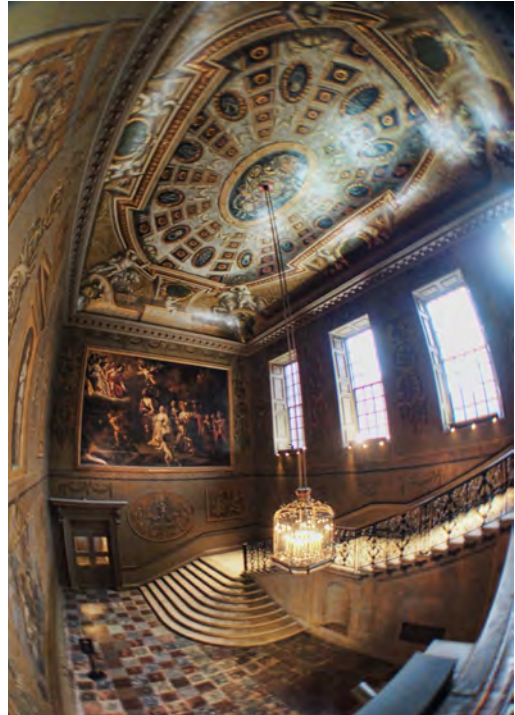


Visit to Hampton Court Palace

This third visit brought the attention out of the more dense and overlaid urban context and into an “out of the town” intervention started in XVth century and continued all along the XVIIth century to provide a rich architecture to host the real families in a

pleasant and relaxing part of the country. Being developed in such an extended series of courtyard, the palace shows different styles and influences, offering an articulated composition of elements from the Tudor and Baroque styles giving access to a large French formal garden. The high quality of the artifacts, the constant use of well de-



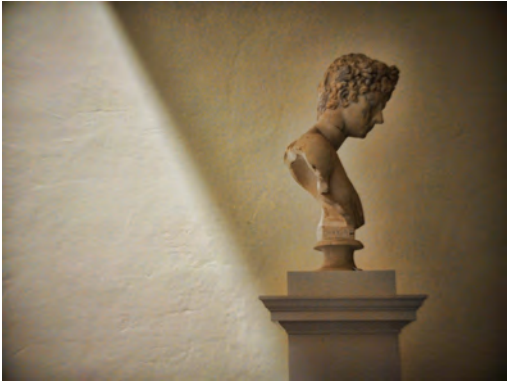


finest materials and the rich level of details, made give it a general unity and continuity in its capacity to capture the attention.

From the end of the XIXth century the palace is opened to public and is considered a main turistic attraction. The setup of the

exhibition areas, the turistic visit and the musealization of the palace took care about preserving at the best the awesomeness of the place, mixing impression from different kings, historical period and, in the end, valorizing the various development phases of the palace. Almost all the architectural details are valorized for their original aspects offering a suggestive collection of technical and artistical solutions from centuries of builing artistry. The will to preserve





while giving access and converting into a museum of itself the palace seems here fully successful, creating all the conditions for different level of reading and offering a wide and appreciable window on the past relationships between spaces, architectures, designed landscape and artworks.



Days of the workshop

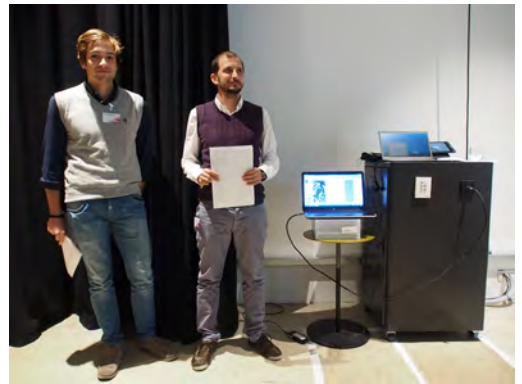
Obviously, the presentations from all the participants, questions, answers, discussion. The interest and the intention to bring on the discussion about architecture, archaeology and contemporary city planning sharing ideas, concepts, points of view.



















London, UK
22-25th September 2016

Scholar workshop:
ARCHITECTURE, ARCHAEOLOGY AND CONTEMPORARY CITY PLANNING

The workshop took place in London, U+I Offices, 7a Howick Place, Victoria.

Workshop organizing committee:
James Dixon, Giorgio Verdiani, Per Cornell

The workshop has been realized in collaboration between Museum of London Archaeology (MOLA), the Architecture Department of the Florence University, Italy, the Department of Historical Studies, University of Gothenburg, Sweden.



UNIVERSITÀ
DEGLI STUDI
FIRENZE
DIDA
DIPARTIMENTO DI
ARCHITETTURA

Proceedings Editors: James Dixon, Giorgio Verdiani, Per Cornell
jdixon@mola.org.uk / giorgio.verdiani@unifi.it / per.cornell@archaeology.gu.se



22th-25th September/LONDON, UK

In discussions on urbanism, the need to involve new actors has been a major theme of recent debate. In this field, throughout Europe, various ways of allowing citizens to take a more direct part in planning is stressed. It is also important to look at the role or lack of role played by particular research fields. Architecture plays a major role in city planning. While archaeology has become increasingly involved in field projects in urban environments, the discipline seldom plays an important role in city planning. In several countries and particular cities this situation has been questioned during the last decades. In September 2016 a group of scholars from different countries met in London to discuss about the relationship between Architecture, Archaeology and contemporary City Planning. This book collects the final papers from that meeting.



The workshop has been realized in collaboration between **Museum of London Archaeology** (MOLA), the **Architecture Department** of the Florence University, Italy, the **Department of Historical Studies**, University of Gothenburg, Sweden

*Workshop organizing committee:
James Dixon, Giorgio Verdiani, Per Cornell*

ISBN n.: 978-0-244-00557-3