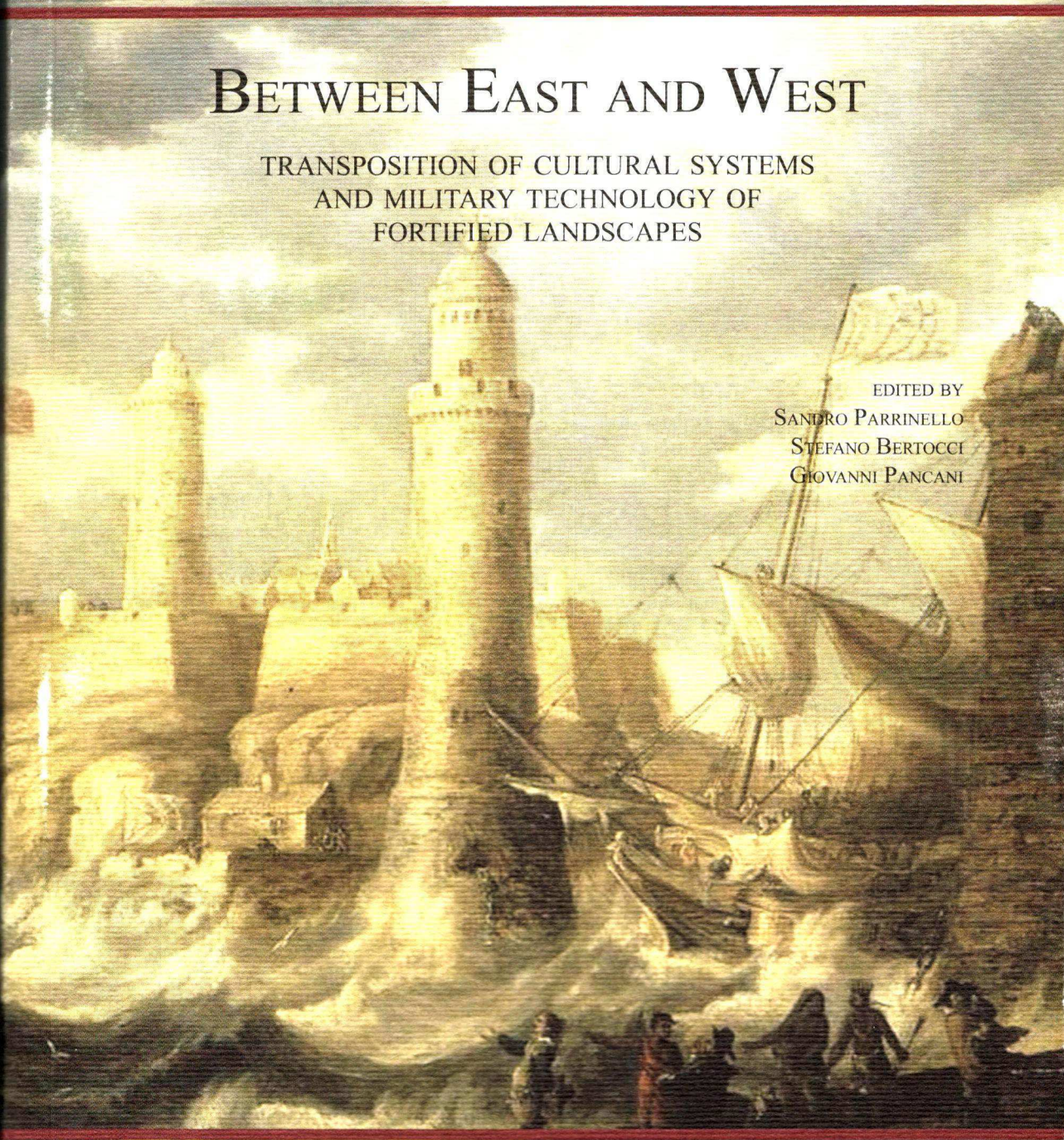


BETWEEN EAST AND WEST

TRANSPPOSITION OF CULTURAL SYSTEMS
AND MILITARY TECHNOLOGY OF
FORTIFIED LANDSCAPES

EDITED BY
SANDRO PARRINELLO
STEFANO BERTOCCI
GIOVANNI PANCANI



The editors would like to thank all those who contributed with their work to the international congress and given their authorisation for publication. The editors and the organizers cannot be held responsible for either the contents or opinions expressed in these works. In addition, the authors hereby declare that the contents of this communication are original ones, or when appropriate, they have the corresponding authorisation to include, use or adapt long quotations or tables and illustrations from other works.

This is a double blind peer review publication evaluated by experts in the field of fortified landscapes and fortresses. The sources and information found within that particular work has been verified by the referee committee. The referee committee was selected by the scientific committee of the Conference among the most experts in this field; peer review referee screened the submitted articles. This process has been chosen to encourage authors to meet the accepted standards of their discipline and to prevent the dissemination of irrelevant findings or uncorrect interpretations.

© Copyright 2012
Edifir-Edizioni Firenze
via Fiume, 8 - 50123 Firenze
www.edifir.it

ISBN 978-88-7970-564-6

Managing Editor
Simone Gismondi

Design and Production Editor
Elena Mariotti

Editing
Andrea Pagano, Silvia Bertacchi

Graphic design project
Andrea Pagano

Printed by
Pacini Editore Industrie Grafiche, Ospedaletto (Pisa)

On cover:
Copy of "Fortified Harbour", oil on panel, by B. Peeters

Photocopies for reader's personal use are limited to 15% of every book/issue of periodical and with payment to SIAE of the compensation foreseen in art. 68, codicil 4, of Law 22 April 1941 no. 633 and by the agreement of December 18, 2000 between SIAE, AIE, SNS and CNA, ConfArtigianato, CASA, CLAAI, ConfCommercio, ConfEsercenti. Reproductions for different purposes from the previously mentioned one may be made only after specific authorization by those holding copyright the Publisher.



forum UNESCO
Forum UNESCO



ICOMOS Italia



ICOFORT



University of
Pavia



University of
Florence



Department of Civil
Engineering and Architecture,
University of Pavia



Department of Architecture,
Drawing, History, Design,
University of Florence



Laboratory of Landscape
Survey & Design,
University of Florence



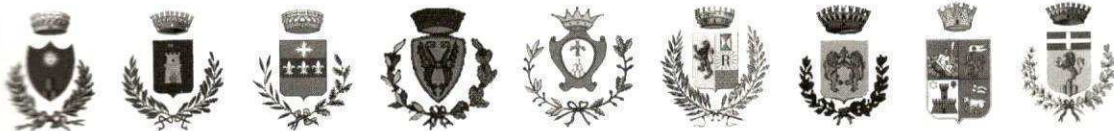
Province of
Florence



Province of
Arezzo



Municipality of
Poppi



Union of Municipalities of the Casentino Mountains



FRDB - Life Beyond Tourism



OIKOS srl



CAM 2- Faro Group Technology Inc.

Proceedings of the International Conference “*Between East and West: transposition of cultural systems and military technology of fortified landscapes*”. Poppi (AR)-Firenze, Italy May 7-13, 2012.

University of Florence; Department of Architecture, Drawing - History - Design.

University of Pavia; Department of Civil Engineering and Architecture.

ORGANIZING COMMITTEE

SANDRO PARRINELLO	University of Pavia, Italy
STEFANO BERTOCCI	University of Florence, Italy
GIOVANNI PANCANI	University of Florence, Italy
ALESSANDRO BREZZI	Director of Rilliana Library, Poppi (AR), Italy
MILAGROS FLORES ROMÁN	ICOFORT president, USA

SCIENTIFIC COMMITTEE

PHILIPPE BRAGARD	Belgium
TAMARA BLANES MARTÍN	Cuba
ROBERT TREUFELDT	Estonia
NICOLAS FAUCHERRE	France
MICHEL PERLOFF	France
ATHANASIOS NAKASIS	Greece
CHO DOO WON	Korea
CARLOS SCHELTEMA	Holland
STEFANO BERTOCCI	Italy
MARCO BINI	Italy
ANGELO BUGATTI	Italy
ALESSANDRA MARINO	Italy
ANNA MAROTTA	Italy
SANDRO PARRINELLO	Italy
CIRO ROBOTTI	Italy
GIOVANNI PANCANI	Italy
FRANCISCO MUÑOZ ESPEJO	Mexico
MARICRUZ PAILLES	Mexico
ROBERTA LUCIANI HAVRAN	Norway
DOMINGOS BUCHOS	Portugal
MANUEL JESÚS RAMÍREZ BLANCO	Spain
FERNANDO COBOS	Spain
PABLO RODRÍGUEZ NAVARRO	Spain
JUAN A. RODRÍGUEZ-VILLASANTE PRIETO	Spain
DAVID MITCHELL	UK
DOUGLAS PRITCHARD	UK
VIACHESLAV KULINICH	Ukraine
MILAGROS FLORES ROMÁN	USA
ROY GRAHAM	USA

SCIENTIFIC SECRETARIAT

SANDRO PARRINELLO

ORGANIZING SECRETARIAT

SILVIA BERTACCHI
GIOVANNI MINUTOLI
ANDREA PAGANO

WEBSITE, GRAPHIC DESIGN

SARA PORZILLI
FRANCESCA PICCHIO
ANDREA PAGANO

INDEX

GREETINGS

GRAZIANO AGOSTINI	<i>Major of the Municipality of Poppi</i>	15
VINCENZO CECCARELLI	<i>Councillor of the Region Tuscany, President of the Sixth Committee - Environment and Territory</i>	16
RITA MEZZETTI PANOZZI	<i>Councillor to Cultural Activities and Heritage, to Public Education and Tourism in the Province of Arezzo</i>	17
MARCO GAMANNOSSI	<i>Councillor to Planning, Territorial Programming, Parks and Protected Areas in the Province of Florence</i>	18
SAVERIO MECCA	<i>Dean of the Faculty of Architecture, University of Florence</i>	19
ULISSE TRAMONTI	<i>Director of the Department of Architecture, Design-History-Project, University of Florence</i>	20
FERDINANDO AURICCHIO	<i>Director of the Department of Civil Engineering and Architecture, University of Pavia</i>	21
ANGELO BUGATTI	<i>Director of the Master Degree Course in Building Engineering/Architecture University of Pavia</i>	22

FORTIFIED LANDSCAPE SYSTEMS AND NETWORKS

<i>THE DOCUMENTATION OF ANTONELLIS' FORTRESSES, A RESEARCH BETWEEN TWO WORLDS.</i> <i>Sandro Parrinello</i>	27
<i>ANTONELLI AND THE SPANISH FORTIFIED CARIBBEAN.</i> <i>Milagros Flores Román</i>	34
<i>ANALYSIS OF THE CONDITION OF THE CASTLES OF VALENCIAN PROVINCE.</i> <i>Manuel Jesús Ramírez Blanco, Jaime Llinares, Ana Valls, Rafael Emilio Marín</i>	38
<i>CASTLES OF THE PROVINCE OF VALENCIA IN GEOGRAPHIC INFORMATION SYSTEM (GIS).</i> <i>Concepción López González, Simeón Couto López, Francisco Taberner Pastor</i>	42
<i>THE RESEARCH PROJECT DOCUMENTING THE FORTRESSES OF THE CASENTINO AREA.</i> <i>Giovanni Pancani</i>	45
<i>CASENTINO TERRITORY AND CASTLES.</i> <i>Marco Bini</i>	48
<i>CASTLES IN THE NORTHERN BORDER OF SOBRARBE, ORIGINATING AT THE TIME OF SANCHO EL MAYOR (11TH CENTURY).</i> <i>Susana Mora Alonso-Muñoyerro, Pablo Cruz Franco, Mónica Fernández de la Fuente, Patricia González Amigo, Marcos Hernanz, Maria de Juan Pelillo, Natalia Rubio, Adela Rueda Márquez de la Plata, Jesús Sánchez Arenas</i>	52
<i>CULTURAL LANDSCAPES OF THE MILITARY ARCHITECTURE OF VERACRUZ. CAMINO REAL VERACRUZ, MEXICO VIA JALAPA.</i> <i>Dolores Pineda Campos, Alfonso García y García, Roberto Ramírez Rodríguez</i>	55
<i>METHODOLOGY FOR THE STUDY OF A SPANISH FORT IN THE 18TH CENTURY: FORT GALERAS IN CARTAGENA (SPAIN).</i> <i>Guillermo Guimaraens, Juan Francisco Noguera, Virginia Navalón</i>	60
<i>THE APPLICATION OF MILITARY TREATISES IN THE DESIGN OF THE SPANISH FORTRESSES IN THE SECOND HALF OF THE SIXTEENTH CENTURY: THE WORK OF THE PALEARO FRATINO BROTHERS.</i> <i>Andrea Pirinu</i>	64

<i>FEATURES OF THE ARCHITECTURE OF CASTLES AND FORTIFIED CHURCHES OF CRUSADER EPOCH.</i> <i>Stefano Bertocci</i>	67
<i>THE DEFENCE SYSTEM OF CONSTANTINOPLE IN THE MIDDLE AGES AND THE ARCHAEOLOGICAL WORKS IN THE BYZANTINE FORTRESS OF YOROS/HIERON ON THE BOSPORUS.</i> <i>Asnu Bilban Yalcin</i>	70
<i>THE FORTIFICATION OF MEDIEVAL CAESAREA (ISRAËL), A DEFENSIVE MELTING POT.</i> <i>Nicolas Faucherre</i>	73
<i>FROM DRAWING IN THE TREATISES TO BUILDING IN THE CONSTRUCTION SITES: EXAMPLES IN PIEMONTE.</i> <i>Anna Marotta</i>	76
<i>STUDY ON THE ROLE OF THE FORTIFIED SYSTEMS OF TRENTO WITHIN THE AUSTRIAN HUNGARIAN EMPIRE TARGETED TO THE VALORISATION OF THE FORTIFIED HERITAGE.</i> <i>Fiorenzo Meneghelli</i>	81
<i>CASTLES IN RUINS: A PROTOCOL FOR THE PLANNING OF CONSERVATION AND MANAGEMENT.</i> <i>Lorenzo Appolonia, Gabriele Sartorio, Antonino Sergi, Cécil Dupré, Christophe Guffon, Joël Serralongue, Laurent d'Agostino</i>	85
<i>FORTIFICATIONS ALONGSIDE NARVA RIVER AND THEIR MUTUAL MILITARY USE THROUGH CENTURIES.</i> <i>Robert Treufeldt</i>	88
<i>BETWEEN EAST AND WEST – THE PHENOMENON OF FORTIFIED LANDSCAPES IN POLAND.</i> <i>Lidia Klupsz</i>	91
<i>THE FORMING PECULIARITIES OF ODESSA LANDSCAPE SLOPES.</i> <i>Nadezhda Yeksareva, Vladimir Yeksarev</i>	94
<i>SETTLEMENTS FORMS FOR THE LAND CONTROL AND DEFENCE IN BASILICATA.</i> <i>Antonio Conte, Maria Onorina Panza, Marianna Calia, Dario Boris Campanale</i>	97
<i>THE INFORMATION SYSTEM OF FORTIFICATIONS TO PROTECT OF THE ACCESS TO THE FUCINO LAKE ALONG THE VIA VALERIA ROUTE BETWEEN THE 10TH AND 12TH CENTURY.</i> <i>Romolo Continenza, Ilaria Trizio</i>	100
<i>FORTIFIED FARMHOUSES IN SHARQ AL-ANDALUS ON THE FRONTIER BETWEEN CHRISTIANS AND MUSLIMS (8TH – 13TH CENTURIES).</i> <i>Pablo Rodríguez Navarro</i>	103
<i>THE FORTIFIED LANDSCAPES OF THE ADRIATIC BASIN.</i> <i>Caterina Palestini</i>	106
<i>DEFENCE OF THE BORDERS OF THE TUSCAN ROMAGNA TERRITORY.</i> <i>Fauzia Farneti</i>	109
 CASE STUDY OF MILITARY TECHNOLOGY	
<i>NAMHANSANSEONG, MOUNTAIN FORTRESS CITY (REPUBLIC OF KOREA).</i> <i>Cho Doo Won</i>	115
<i>THE HOUSE OF THE CHANCELLOR IN HUANG CHENG. THE BETTER EXAMPLE OF CHINESE CASTLE.</i> <i>Francesco Maglioccola 马方济</i>	119

<i>FORT OULU: DESIGNS FOR WORLD'S NORTHMOST BASTION FORTRESS.</i> <i>Petri Vuojala, Harri Rynnänen</i>	122
<i>CHARTREUSES ET FORTIFICATIONS: LE CAS DE LA CHARTREUSE DE PIERRE-CHATEL.</i> <i>Giovanni Leoncini</i>	125
<i>THE RECONVERSION OF THE FORT OF BARD (VALLE D'AOSTA).</i> <i>Laura Blotto</i>	128
<i>THE DIGITAL DOCUMENTATION OF STIRLING CASTLE.</i> <i>Douglas Pritchard, Chris McGregor, David Mitchell</i>	131
<i>THE CITADEL OF GOZO. RESTORATION STRATEGIES AND VALORISATION OF MALTA FORTIFIED SYSTEM.</i> <i>Marcello Balzani, Federico Ferrari, Luca Rossato, Alessandra Tursi</i>	134
<i>THE CITADEL OF GOZO. 3D MODELING.</i> <i>Leonardo Chiechi, Sabina Macchitella</i>	137
<i>THE PRIAMAR IN SAVONA. CRITICAL READING OF A BESIEGED FORTRESS.</i> <i>Michel Perloff</i>	140
<i>THE AREZZO 16TH CENTURY FORTRESS, BETWEEN HISTORY AND RESTORATION.</i> <i>Maurizio De Vita</i>	143
<i>THE FORTRESS OF MELDOLA AS REPRESENTED IN THE STUDIES OF GENERAL MARINELLI.</i> <i>Silvio Van Riel</i>	146
<i>THE CASTLE OF THE COUNTS SAMBUY.</i> <i>Nadia Fabris</i>	149
<i>AN ANTIQUE CITY: KNIDOS.</i> <i>Sibel Onat Hattap</i>	152
<i>A FORTRESS, SOME SIEGES AND THEIR REPRESENTATION.</i> <i>Roberto Parenti</i>	155
<i>AN "ANTE LITTERAM" NEWFOUNDLAND: THE CASTLE OF PIETRABUONA.</i> <i>Alessandro Merlo, Gaia Lavoratti</i>	158
<i>AN EARLY 14TH CENTURY FLORENTINE FORTRESS AT FUCECCHIO, IN THE LOWER ARNO VALLEY.</i> <i>Andrea Vanni Desideri</i>	161
<i>LA DOUBLE ENCEINTE DU CHATEAU DE CIVITELLA EN VALDICHIANA.</i> <i>Carmela Crescenzi</i>	164
<i>FROM DEFENCE TOWER TO CULTURAL SYMBOL: RESEARCH AND PRESENTATION OF VRSAC TOWER.</i> <i>Snezana Vecanski</i>	167
<i>URBAN RENEWAL ON FORTIFIED (WORLD) HERITAGE SITES.</i> <i>Karl Kupka</i>	170
<i>THE LADISLAO II D'AQUINO CASTLE IN ROCCHETTA SANT'ANTONIO IN FOGGIA. TYPICAL EXAMPLE AMONG THE CASTLES OF DAUNIA IN THE ARAGONESE PERIOD.</i> <i>Domenico Spinelli</i>	173

<i>THE "FORM FACTOR" IN THE CONSTRUCTION OF MONTE SANT'ANGELO AND CASTEL DEL MONTE.</i> Giovanni Mongiello	176
<i>THE FORTIFICATIONS OF MALTA IN THE FRESCOES BY MATTEO PEREZ D'ALECCIO.</i> Ciro Robotti	179
 POSTER	
<i>GIOVANNI BATTISTA ANTONELLI: THEORY, MODEL AND REALITY.</i> Sandro Parrinello, Silvia Bertacchi	185
<i>RENAISSANCE GEOMETRY IN THE EVANGELISTA MENGA CASTLES.</i> Pasquale Tunzi	188
<i>TOWERS OF THE FORTIFIED HOUSES OF SEGOVIA. PRESENCE IN THE SKYLINE OF THE CITY.</i> Marcos Hernanz, Natalia Rubio	191
<i>REUTILIZATION OF THREE SPANISH CASTLES: MAQUEDA, PEÑAFIEL AND SIMANCAS.</i> Mónica Fernández de la Fuente, Patricia González Amigo, Jesús Sánchez Arenas	194
<i>HISTORIC MASONRY CONSOLIDATIONS IN THE WALLED COMPLEX OF BUITRAGO DEL LOZOYA.</i> Silvia Bootello Almedáriz, Ignacio Mora Moreno	197
<i>FORTIFIED LINES AT THE SOUTH OF THE CITY OF CÁCERES: THE FORTIFIED LANDSCAPE AS CULTURAL HERITAGE.</i> <i>FORTIFIED HOUSE ARVAJAL-VILLALOBOS.</i> Adela Rueda Márquez de la Plata, Pablo A. Cruz Franco	200
<i>STUDY CONCERNING THE DEVELOPMENT OF MILITARY ARCHITECTURE CONFIGURATION IN THE TWENTIETH CENTURY COLONIAL CITY VILLA CISNEROS (CURRENTLY DAKHLA).</i> Ruth Cebrián Jorge, Natalia Rubio Camarillo	203
<i>THE FORTIFIED PALACE OF THE HOUSE OF THE KNIGHTS OF ST. JOHN'S HOSPITAL IN JERUSALEM IN THE CITY OF VALENCIA.</i> Jorge García Valdecabres, María Luisa Navarro García, Daniel Crespo Godino	206
<i>TECHNOLOGY OF PRESSING PILES IN THE CONSTRUCTION OF TECHNOGENIC GROUND IN THE PERM REGION.</i> Svetlana V. Maksimova, Ekaterina B. Pimenova, Anna A. Shamarina	209
<i>THE CASTELLACCIO OF BIVIGLIANO. INTEGRATED SURVEY AND ENHANCEMENT FOR AN EMBLEMATIC CASE OF RESEARCH ON FORTIFICATION SYSTEMS IN NORTHERN TUSCANY.</i> Andrea Pagano, Roberto Parenti, Sandro Parrinello	212
<i>THE SYSTEM OF TOWERS ON THE AMALFI COAST. DOCUMENTS, IMAGES, CONSIDERATIONS.</i> Luigi Corniello	215
<i>THE STRONG PLACES OF THE VALLEY SIMETO. THE DONJON OF ADRANO, PATERNÒ AND MOTTA.</i> Nello Caruso	218
<i>STUDY OF ARCHITECTURAL AND DECORATIVE STYLES OF THE SACRED ENVIRONMENTS INSIDE THE CRUSADER DONJONS AT PATERNÒ AND ADRANO.</i> Sara Bua	221
<i>CASTLES AND FORTIFIED SYSTEMS IN ABRUZZO: THE CASE STUDY OF ACCIANO.</i> Carlo Raffaelli, Sara Porzilli	224

<i>ACCIANO WALLED VILLAGE: PROBLEMS OF SEISMIC VULNERABILITY OF HISTORIC FORTIFIED CENTERS.</i> <i>Giovanni Minutoli</i>	227
<i>SEACOAST DEFENCE SYSTEMS: THE CASTLE OF ROCCELLA JONICA AND TOWER PIZZOFALCONE.</i> <i>Stefano Bertocci, Graziella Del Duca</i>	230
<i>THE "PALATIUM SIVE FORTILITIUM" OF ALAMANNI SALVIATI AT PONTE ALLA BADIA.</i> <i>Monica Lusoli</i>	233
<i>MELETO CASTLE.</i> <i>Linda Puccini</i>	236
<i>THE BALTIC CULTURE AND TOURISM ROUTE FORTRESSES (BALTIC FORT ROUTE – BFR).</i> <i>Hans-Rudolf Neumann</i>	239
<i>THE AUSTRIAN FORTS IN TRENTINO: MEMORIES FROM THE PAST TO THE FUTURE.</i> <i>Giovanna Massari</i>	240
<i>THE FORT OF THE ROYAL SITE OF PORTICI.</i> <i>Annamaria Robotti</i>	243
<i>BOLOGNA PERMANENT FORTIFICATION.</i> <i>Fabrizio Ivan Apollonio, V. Baroncini</i>	245
<i>MORPHOLOGIC STUDY ON THE CASTLE OF ALMENARA.</i> <i>Pablo Rodriguez-Navarro, Teresa Gil-Piqueras, Filippo Fantini</i>	248
<i>ARCHEOLOGICAL SURVEY OF THE CASTLES AND FORTIFICATIONS OF ESFAHAN FROM THE PERSPECTIVE OF ADMINISTRATIVE GEOGRAPHY, FROM BEGINNING OF THE ISLAMIC ERA TO THE SAFAVID PERIOD.</i> <i>Ali Shojaee Esfahani</i>	249

EXHIBITION CATALOGUE

<i>1) DOCUMENTATION OF THE ANTONELLIS' FORTRESSES.</i> Curator of the exhibition: <i>Sandro Parrinello</i>	255
<i>2) HERITAGE IN DANGER. CASTLES AND FORTRESSES IN THE PROVINCE OF VALENCIA</i> Curator of the exhibition: <i>Manuel Jesús Ramírez Blanco</i>	270
<i>3) 3D LASER SCANNER SURVEY OF COUNTS GUIDI'S CASTLE OF POPPI AND PIEVE A SOCANA.</i> Curator of the exhibition: <i>Stefano Bertocci, Giovanni Pancani</i>	276

INTRODUCTION

The programme will give a particular attention to the priorities expressed by the recent document of ICOFORT, and in particular to the themes of cultural tourism, training in regard to the development and review of world Heritage Site nominations, fortification glossary of terminology, the evaluation on Fortifications and military landscapes, the relations between the conservation of fortifications and processes of climate change, and also the dissemination of web information. The research projects will be organized in three thematic areas related to the ancient fortifications of medieval period and his late medieval developments, to the great Renaissance and late Renaissance fortifications, and to the modern and contemporary fortified systems.

The international conference "*Between East and West: transposition of cultural systems and military technology of fortified landscapes*" is organized in order to compare the results and the updates about the several researches made by experts of various nationalities, about the theme of cultural routes and fortified landscapes.

The scientific knowledge, the analysis, the documentation and the architectural survey and of the heritage in all its meanings, are essential instruments for the understanding and the improvement of any information and sign that history and culture has produced in each places or in a specific geographic area. These signs are in any case the result of the transposition of cultural models, of building technologies and offensive and/or defensive strategies, that have been tested, consolidated and exported for a long time, and that have determined the image of whole territories.

"The structure of a site is not a fixed condition, usually eternal rule places sometimes change quickly. This does not mean that the genius loci must necessarily change or be lost". (C. Norberg-Schulz)

The implementation of the knowledge, the specific studies and the documentation programs, also constitute the main basis for the exercise of critical and interpretative activities, in order to training and to develop a particular settlement, city or area. Besides, they are also useful for the expectation of the necessary specific planning for the conservation and the improvement, that are aimed at promoting the conscious development of human activities in that places.

This international conference aims at comparing the experiences made in this scientific area, that have allowed the development of operational methods for researches useful for the correct understanding of both the architectures and the historical and archaeological complexes. Furthermore, it also aims at taking into consideration the cultural and environmental contexts of the contemporary history, giving essential advices for a critical reading and a proper evaluation about the conservation actions for this important heritage.

S. Bertocci, S. Parrinello, G. Pancani

THE RESEARCH PROJECT DOCUMENTING THE FORTRESSES OF THE CASENTINO AREA

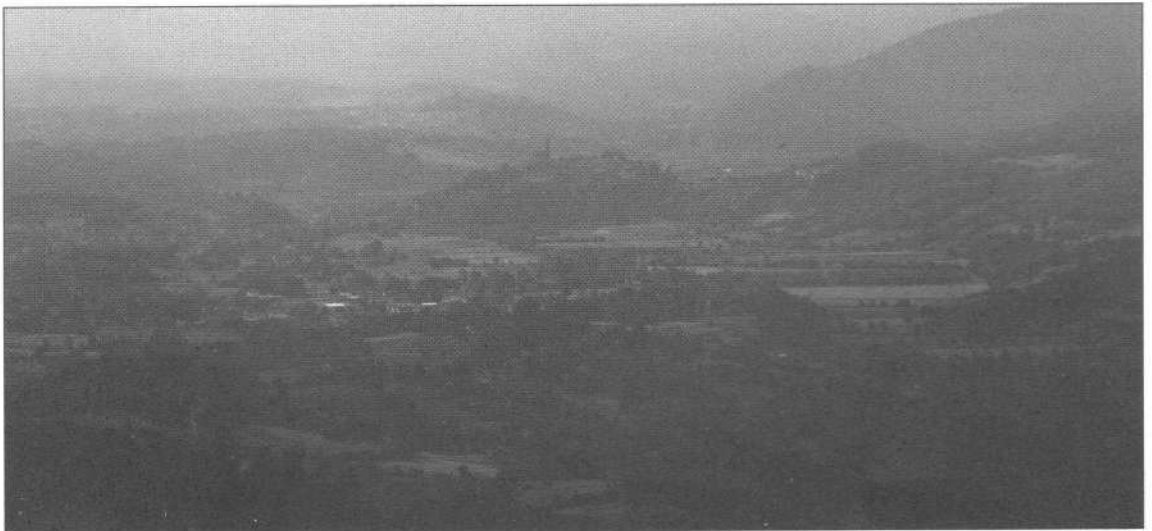
Giovanni Pancani

University of Florence, Italy

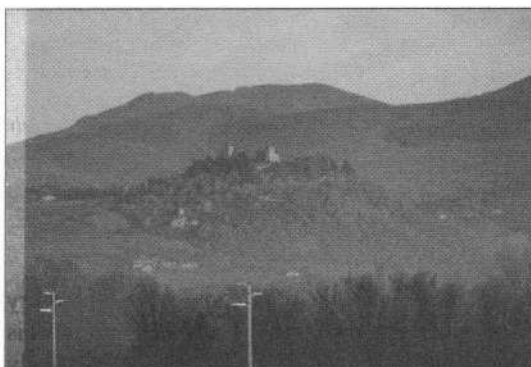
Keywords: Fortresses, 10th/15th century, Casentino area (Italy), 3D laser scanner survey

THE RESEARCH PROJECT DOCUMENTING THE FORTRESSES OF THE CASENTINO AREA

The family of the Conti Guidi, whose presence in Casentino is documented from the end of the 10th century onwards, built numerous fortifications to control the area. The first reliable reference to the presence of this important dynasty, probably of Langobard origin, which extended its dominion over central Italy, especially along the Apennine ridge between Emilia Romagna and Tuscany, is to Count Tegrimo (967), thought to be a relative of the Emperor Otto I. The Guidi Conti exerted their power in the north of Casentino, in the area situated according to modern municipal boundaries, between the Boroughs of Poppi, Chiusi della Verna, Castel San Niccolò, Montemignaiò, Pratovecchio and Stia, building numerous castles, lookout towers and fortified hamlets there, from the 10th to the 15th centuries. From these sites they were able to reach the Apennine passes which led to Emilia Romagna and Florence. Its closeness to the Guelfs of Florence and the Ghibelline bishopric of Arezzo made Casentino and its lords party to changing fortunes and alliances and one of the most bloody battles of the Tuscan middle ages, the battle of Campaldino, which in 1289 had among its ranks the young Dante Alighieri. Of the original system of fortifications many castles have remained to the present day, some in excellent condition, others less so, and some of which only a few ruins remain. The research project for surveying the fortifications built by the Guidi Conti in Casentino is inspired by the hope that the documentation and cataloguing of these monuments may lead to an improved valorisation and preservation of the same.



Casentino valley: in the background the valley of Campaldino and the hill where the castle of Poppi is located.



The castle of Romena, view from the city of Poppi.

to the valley, offering a view in all directions. The castle, surrounded by the beautiful fortified hamlet of Poppi, was formerly the most important residence in the political vicissitudes of the Tuscan Guidi and later the seat of the Florentine Signoria controlling northern Casentino.

The main project, entailing a morphometric survey of the Castle, was tackled using laser scanner instruments, coupled with high definition photographic surveys to acquire qualitatively significant data for assessing the degree of decay of the surfaces. The purpose of such surveys was to gather the necessary information for developing a reference database of the state of preservation and/or decay of the monument and to develop three-dimensional, multimedial models for its popularisation and valorisation.

We are confident that this project, the first two-dimensional reconstructions of which can be seen at the exhibition currently on in the castle premises, could be a valid instrument for encouraging and presenting the morphometric documentation project of the Guidi castles to the many public bodies and private owners of other important fortified sites. In fact, given the large number of castles and fortified hamlets scattered through the various boroughs of the valley, interest in this initiative needs to be stimulated; the presentation, in such an exceptional setting, of the work done on the most significant of these sites may help to create the right cultural climate for attracting owners and public bodies to embark on a programme leading the various parties involved to achieve the aforementioned goals. The project should therefore be conducted with the synergy of various disciplines able to valorise and identify all the related aspects.



The village of Strumi with the ruins of the monastery and the hill where, probably had been located the first Counts Guidi's castle nearby Poppi.

At times like now, when resources are extremely limited, it is of strategic importance to develop programmes able to valorise and attract interest in these architectural systems so closely connected to local history given that their very construction was a result of the political and administrative control of the area. Successful valorisation of this extraordinary system of fortifications may therefore help to attract resources for their preservation and also act as a driving force for the sustainable touristic development of the valley.

The project began with a survey of the Castle of the Guidi Conti in Poppi, that is to say the most historically-architecturally important building in the area due to its highly strategic vantage point, the peak of a hill central

As well as the more famous sites such as Poppi, Romena, Porciano, Chiusi, Castel San Niccolò, there are lesser hamlets where only traces of the ancient fortifications remain and sites where only the expert eye of the archaeologist can assist in identifying the faint indications present.

Confirming the excellence and importance of this programme and of the work done up until now is the survey project of the entire hamlet of Poppi which, thanks to the collaboration of the Town Council we have been able to embark on over the last few days.

The work relating to documentation of the Porta a Porrena, situated under the Benedictine Abbey of San Fedele was, incidentally, the subject of a recent study workshop.

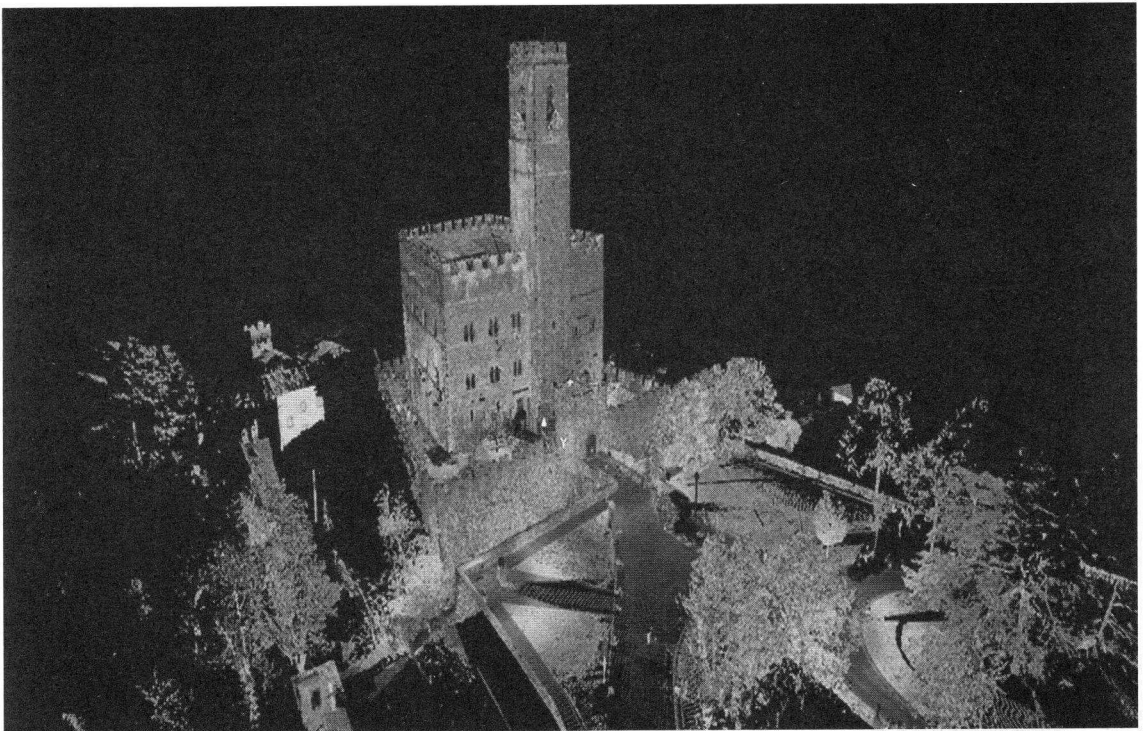
These surveys were also used to verify the development of a methodological protocol for the realisation and certification of surveys using 3D laser scanners.

Publication of the first, albeit partial, results of these surveys, especially that of Poppi castle, is merely the first step of this project which should lead to the participation of other interested parties, in the conviction that the relevance of such experience and the educative and analytical possibilities it throws up should be able to attract the attention of public bodies and local, provincial and regional administrations.

A method of documentation such as that proposed would enable the creation of an organised network of Guidi sites on a consortium basis as the next step, thereby permitting a better understanding and interpretation of the system of fortifications built in northern Casentino by the Conti Guidi family.

The next stage would then be to conduct surveys of all the known sites and, subsequently, in-depth investigations aimed at identifying the presence in the area of further evidence of the past, adding to the already consistent historic and architectural heritage of the Valley. The natural outcome being to find the funds needed for the maintenance, preservation and adequate valorisation which such a heritage deserves.

To conclude, the aim of the programme is to create from the original medieval network of fortifications created to control the territory a modern network of the same which ensures their valorisation and safeguarding.



The point cloud from the 3D survey of the castle of Poppi.