

# DIDA RESEARCH



UNIVERSITÀ  
DEGLI STUDI  
FIRENZE

# WEEK

## Representation for knowledge, preservation and improvement of the mediterranean rupestrian habitat

**Coordinatore scientifico UR - DIDA**  
Carmela Crescenzi

**Sede**  
Santa Verdiana,  
piazza L. Ghiberti 27,  
stanza D 22

**Unità di Ricerca**

**DIDA - UNIFI**  
Carmela Crescenzi  
Marcello Scalzo  
Giorgio Verdiani  
Francesco Tioli  
Sergio Di Tondo  
Claudio Giustiniani  
Andrea Pasquali  
Alexia Charalambous,  
Andrea Leonardi  
Tatiana Pignatale  
Laura Cammilli (admin.)  
Cabria Fossati (admin.)  
Gioi Gonnella (admin.)

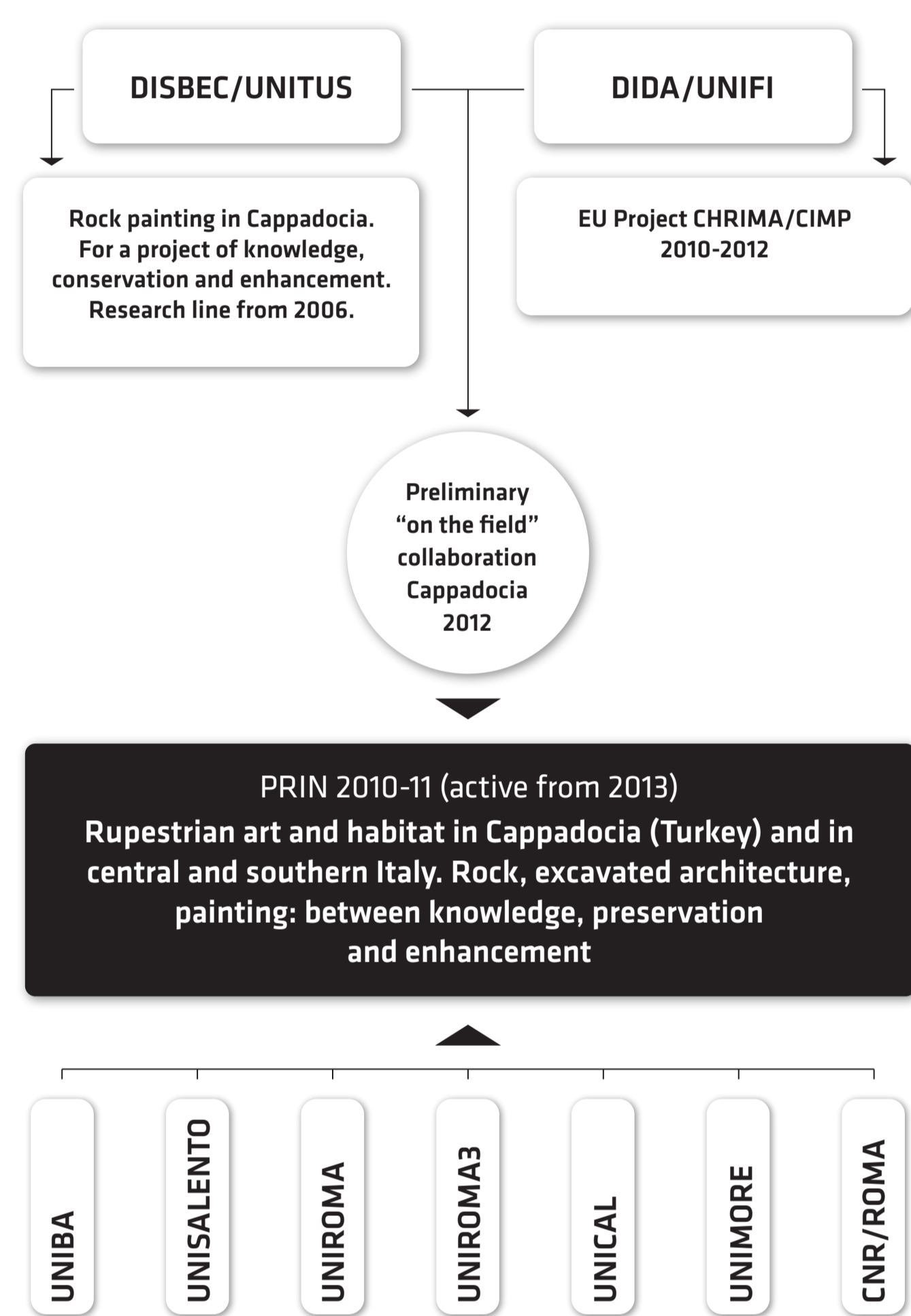
**DICIEAMA - UNIME**  
Alessio Altadonna  
Claudio Marchese  
Fabio Todesco  
Giuseppe Martello

**CSS - Genova**  
Andre Bixio  
Roberto Bixio  
Alessandro Maifredi  
Andrea De Pascale  
Mauro Traverso

**Stakeholders**

**Italy**  
Archeogruppo E. Jacovelli - Massafra  
Comune di Massafra  
Comune di Palagianello  
Museo del Territorio di Palagianello  
Comune di Sorano  
**Turkey**  
General Direction of Monuments and Museums of the Turkish Republic  
Archeological Museum of Nevşehir  
Department of Archaeology of the General Direction of Monuments and Museums  
Archaeological Museum of Çorum  
Belediye Kayseri  
Erciyes Üniversitesi

From February 2013 to February 2016, DIDA has been a partner in the project "Rupestrian art and habitat in Cappadocia (Turkey) and in Central and Southern Italy. Rock, excavated architecture, painting: between knowledge, preservation and enhancement". Funded by PRIN (2010/11) it was coordinated by Prof. Maria Andaloro of Tuscia University. The project, based on an interdisciplinary approach combining humanistic and scientific knowledge, has used innovative technologies chosen among the most suitable contemporary communication media applied to cultural heritage. Mainly, has been examined two areas in the European-Mediterranean context, of the most representative of Medieval Rock Heritage: the Cappadocia, which is the first of Unesco World Heritage sites in Turkey, and the South-Central Italy, with the settlements of Puglia, Basilicata, Sicily and the case of the Sassi of Matera, declared World Heritage in 1993. Therefore, the habitat, a singular and natural anthropic opera union, is the core theme of the project, whose objectives are set out in the title: knowledge, conservation and enhancement. The Florence DIDA Unit Research has pursued its goals with the tools of "representation" and specific to the rocky habitat. Particularly, the Unit Research worked in Cappadocia in a not investigated area, located on the eastern side of the Göreme Valley, in the north of the Open Air Museum. The DIDA Unit Research, especially, has achieved a territorial survey of his landscape and architectural unity, with its settlement structures in rock, that are on the ridge, and dug in natural cones, that characterise the Cappadocian landscape. Also, had been documented the Italian site Santa Marina Village, near San Marco's ravine at Massafra, Puglia, and the east front of Palagianello ravine and its medieval and XVI century part of village settlements.



### PUBLICATIONS

C. Crescenzi, *The expeditious survey of Tokalı kilise in Soğanlı Valley*. In Hypogea 2017, Proceedings of International Congress of Speleology in Artificial Cavities, Cappadocia 2017.

C. Crescenzi, M. Scalzo, G. Verdiani, *3D Laser Recording and the "Naturalised" Urban Landscape of Göreme, Kapadokya, Turkey*. In "LAC 2014 proceedings. Multi-, Inter- and Transdisciplinary Research in Landscape Archaeology", Roma 2016.

C. Crescenzi, *A promenade in rupestrian landscapes of Cappadocia. Survey, notes and new technologies*, in UNISCAPE\_EN\_ROUTE, a.l n. 4 - 2016.

M. Scalzo, C. Giustiniani, *Knowledge and fruition of the rupestrian monument between past and present*. In "Contemporary problems of Architecture and Construction", Pitagora Editore, Firenze 2015.

C. Crescenzi, C. Giustiniani, G. Ricchiera, *Religious buildings in Ortahisar (Turkey). The Survey of the complex of Saklı and Ali Torun kilise*. Hypogea 2015, Proceedings of International Congress of Speleology in Artificial Cavities, Rome 2015.

G. Verdiani, C. Gira, *A Trial of Digital Preservation: the Meryemana Rupestrian Church in Göreme, Turkey*. In XIII Conference Culture and Computer Science, Bode-Museum, Berlin 2015.

G. Verdiani, *Bringing Impossible Places to the Public: Three Ideas for Rupestrian Churches in Göreme, Kapadokya Utilizing a Digital Survey, 3D Printing, and Augmented Reality*. Open Archaeology, vol. 1, 2015.

M. Scalzo, *Immagini come strumento di analisi. Una chiesa rupestre a Göreme (Turchia): dal film "Medea" di P.P. Pasolini ad oggi*. In Italian Survey & International Experience, Gangemi Editore, Parma 2014.

M. Andaloro, T. Pignatale, G. Verdiani, *The Church of Meryem Ana in Göreme, Cappadocia, correct documentation for a meaningful heritage at risk*. Proceedings of the 18th CHNT, Vienna 2014.

C. Crescenzi, *Rilievo e documentazione di paesaggi e insediamenti del patrimonio culturale rupestre del Mediterraneo*. In Italian Survey & International Experience, UID, Gangemi, Parma 2014.

M. Scalzo, *Architetture rupestri di Marche e Romagna. Un esempio: la grotta Ricotti a Camerano*. In Patrimonio e siti Unesco. Memoria, misura e armonia, Gangemi Editore, Matera 2013.

M. Andaloro, R. Bixio, C. Crescenzi, *The complex of S. Eustachius in Göreme, Cappadocia reading the relationship between the landscape and a very articulated underground settlement*. Proceedings of the 18th CHNT, Vienna 2013.

M. Andaloro, C. Crescenzi, P. Pogliani, G. Verdiani, *The St. Eustache and the Meryemana churches in Göreme. Two case studies of documentation about rupestrian heritage in Cappadocia, technical approach from the digital survey to the restoration hypothesis*. In Digital Heritage International Congress, Marseille 2013.

G. Verdiani, *Il vuoto e la sostanza: breve visione sul paesaggio della Cappadocia*. NETWORK IN PROGRESS, vol. 13, 2013.

M. Scalzo, *L'eremo di Düdingen a Friburgo (Svizzera): alcune considerazioni sul culto della Maddalena in Europa*. In Architettura eremitica. Sistemi progettuali e paesaggi culturali. 4° Convegno, La Verna (AR), Edifir 2013.

### WORKSHOPS

**Survey in Cappadocia - Turkey 2015**

- Antico Bazar della città di Kayseri
- La casa Museo di Mimar Sinan
- Soğanlı Valley e Tokalı Kilise

**Survey in Toscana - Italy 2015**

- Rilievo del Villaggio di Vitozza
- Via Cava di Sorano
- Tomba di Ildebranda, Parco Archeologico di Sovana
- Promozione e valorizzazione del Cultural Heritage del Comune di Sorano per Expo Milano 2015

**Survey in Cappadocia, Göreme Valley - Turkey 2014**

- Water system in the Kılıçlar valley
- Complex aniconic Church XIII, Church 9, aniconic Church V
- Landscape survey of Göreme and Kılıçlar valleys.

**Survey in Puglia - Italy 2014**

- Landscape survey of Palagianello ravine and Massafra

**Survey in Cappadocia, Göreme Valley - Turkey 2013**

- The pinnacle of St Daniel and aniconic Church 11
- Ortahisar: Chiesa Madre, Ali Torun complex

**Survey in Cappadocia, Göreme Valley - Turkey 2012**

- St. Eustache Pinnacle, Church and settlement
- Meryem Ana Church

### INTERNATIONAL CONFERENCES

- The heritage of rocky landscapes: urban and rural parks. Tourism And Sustainable Development. Sorano, Settembre 2017
- Insediamenti rupestri. Paesaggi Culturali. In FESTIVAL D'EUROPA Firenze, Maggio 2015

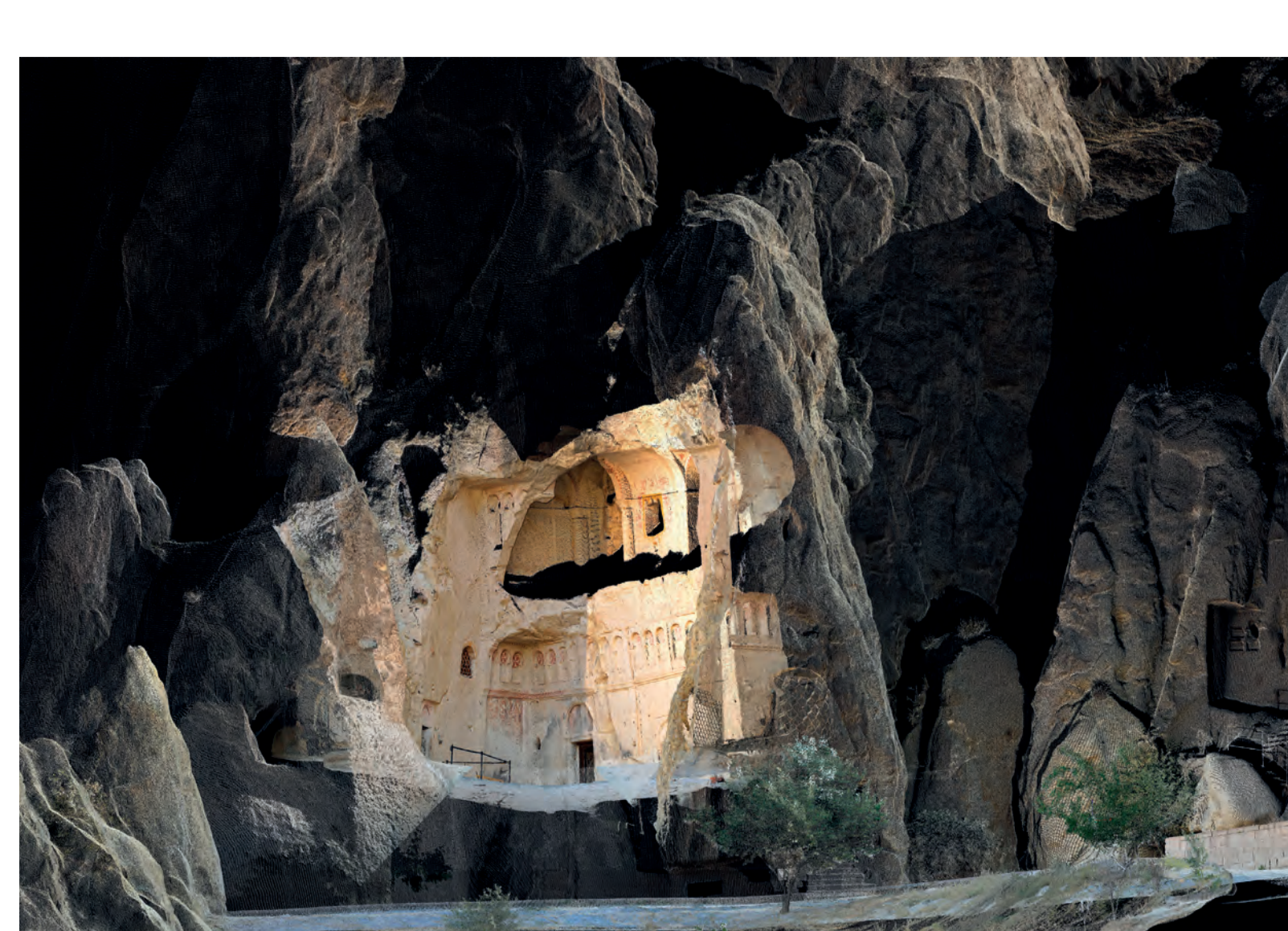
RESEARCH UNIT PROJECT  
PRIN\_2010/13 (13/15)



Massafra - The ravine landscape



Göreme - Landscape Open Air Museum



Göreme - Open Air Museum, Karanlık Kilise

19 - 23 FEBRUARY

FLORENCE