

Seismicity of the Bora – Tullu-Moye volcanic field, 2016-2017

Tim Greenfield¹

Derek Keir^{1,2}

J-Michael Kendall³

Atalay Ayele⁴

¹School of Ocean and Earth Science, University of Southampton, SO14 3ZH, UK

²Dipartimento di Scienze della Terra, Università degli Studi di Firenze, Florence, Italy,

³Department of Earth Sciences, University of Bristol, UK

⁴Institute for Geophysics Space Science and Astronomy, Addis Ababa University, Addis Ababa, Ethiopia

Key Points

1. More than 1000 earthquakes are detected and located around Tullu-Moye, a volcano in the Main Ethiopian Rift.
2. Earthquakes locate to depths less than 6.5 km and cluster onto multiple orientations of faults where hydrothermal fluids are channeled.
3. Shear-wave-splitting observations and fault plane solutions indicate a rift parallel stress field locally affected by volcanic structures.

Abstract

The Bora - Tullu-Moye volcanic field is a geothermal energy prospect in the central Main Ethiopian Rift, but little is known about the seismicity of the region. Here we document seismic activity between Feb 2016 and Oct 2017, locating more than a 1000 seismic events of local magnitude 0 to 2.7. This provides new insights into fluid movement and deformation beneath what we only now realize is a complicated volcanic system. A discrete

This article has been accepted for publication and undergone full peer review but has not been through the copyediting, typesetting, pagination and proofreading process which may lead to differences between this version and the Version of Record. Please cite this article as doi: 10.1029/2018GC007648

cluster of events lies beneath Tullu-Moye (TM), but, surprisingly, most of the seismicity lies in two clusters that are beneath neither the Bora or TM edifices. In these regions, we use earthquake cluster orientations, fault-plane-solutions and fast seismic shear-wave orientations to show that seismicity is triggered by hydrothermal circulation of fluids along pre-existing fractures. The fractures trend in multiple directions and are, in general, not parallel to rifting related structures. Instead, the fractures are parallel to structures created during previous caldera forming eruptions at both Bora and TM. Highly fractured regions such as this could be attractive targets for geothermal power generation. We estimate a minimum depth for a magmatic body beneath TM to be 6.5 km using the mapped brittle-ductile transition. Frequency analysis of the earthquake waveforms reveal the bulk of the events to be volcano-tectonic but some low-frequency (LF) seismicity is present at a depth of 5 km beneath the TM edifice triggered by high pore fluid pressures.

Keywords

Main Ethiopian Rift, Tullu-Moye, earthquake, low-frequency, anisotropy, volcano

1. Introduction

The Main Ethiopian Rift (MER) stretches from the Afar triple junction in the north to the Turkana depression in the south. More than 31 volcanoes are located within the rift (Global Volcanism Program, 2013) and approximately 11% of the population of Ethiopia live within 30 km of a volcano; making it important to understand the hazard posed by these volcanoes (Aspinall et al., 2011). Additionally, volcanoes in the MER have the potential to generate large amounts of low-carbon geothermal power, a resource that is not well-exploited. There is only one operating geothermal power plant in Ethiopia, located on Aluto volcano

(Teklemariam et al., 1996), although more are being developed. Hydrothermal systems are likely to be driven by subsurface magma replenishment (Hill et al., 1985), making it important to understand the magmatic plumbing systems of volcanoes in order to assess their geothermal power potential. However, while regional scale geophysical surveys have reported on the overall structure of the MER, few studies have explored the detailed structure and magmatism of individual volcanoes.

This study presents the first detailed picture of the magmatic, hydrothermal and fracture systems at Bora-Tullu Moye (B-TM), as part of the NERC funded RiftVOLC project. We used a seismic network deployed at B-TM between February 2016 and October 2017 in order to detect and locate seismicity from around the volcano, characterizing the seismic activity during this period. We use the catalog of earthquakes to generate a 1D velocity model suitable for the local region, compute focal mechanisms and image the anisotropic structure of the crust. In addition, we use the spectral content of the earthquakes to map spatial changes in the earthquake source processes. These data allow us to image the state of stress around the volcano as well as the active fracture sets facilitating fluid flow through the volcano. This study serves as a benchmark upon which further studies can be built.

2. Geological and Geophysical context

2.1 Tectonic and volcanic history

Spreading between the Nubian and Somalian plates is currently accommodated by the MER at $\sim 6 \text{ mm yr}^{-1}$ in an approximately east-west direction (Bendick et al., 2006; Birhanu et al., 2016; DeMets et al., 2010) (Figure 1). Rifting initiated in the central part of the MER in the Miocene (Bonini et al., 2005; Woldegabriel et al., 1990; Wolfenden et al., 2004) and was bounded by large border faults that accommodated the bulk of the plate spreading. Since 2

Ma, there has been a shift in the style of rifting with a transition to magmatically facilitated rifting resulting in relatively short and small offset intra-rift faults (Ebinger & Casey, 2001; Corti et al., 2013). These right-stepping *en-echelon* faults form the present-day Wonji Fault Belt (WFB) (Pizzi et al., 2006). The WFB is the also locus of most of the Quaternary-Recent volcanism, including major volcanic centers near B-TM such as Boset, Gedemsa and Aluto, and aligned monogenetic cones (Ebinger & Casey, 2001). South of Aluto however, the narrow zone of intra-rift faulting of the WFB is less well defined or absent, though major volcanic centers are still present on the rift floor (e.g. Corbetti).

B-TM is comprised of two volcanic centers: Bora and Tullu-Moye (TM). TM is located within the WFB while Bora is offset to the west and closer to the center of the rift. The eruptive histories of both centers are poorly constrained, with few dates available to constrain eruption rates. Ignimbrites exposed in the WFB to the south of TM give the ages of large, possibly caldera forming eruptions between 115 ka and 1.8 Ma (Bigazzi et al., 1993). Eruptive products are a mix of silicic pyroclastics, obsidian and basalt lava flows. Geochemical analysis of the silicic products reveal significant differences between the pantellerites found around Bora and commendites around TM, suggesting that each center has its own magmatic plumbing system (Fontijn et al., 2018).

TM is the more recently active, with fresher looking trachytic flows emanating from rift parallel fissures. The freshest looking flows may be related to eruptive activity between 100 and 200 years ago (Gouin et al., 1979; Di Paola, 1972). Significant horst and graben structures are observed extending to the north and south of TM and indicate the location of the WFB in this area (Figure 1). In contrast, Bora is much less heavily faulted.

2.2 Crustal structure and seismicity

Little previous work has been done on the detailed structure of the B-TM volcanic region. However, some regional geophysical studies have included this region of Ethiopia and have constrained seismically active locations and crustal structure (e.g., Keir et al., 2006a; Maguire et al., 2006; Daly et al., 2008; Keranen et al., 2004).

The P-wave crustal structure of the MER was imaged by Maguire et al. (2006) using wide angle reflection and refraction seismology. B-TM lies within high-velocity (6.3 km s^{-1} at 10 km depth) regions defining the present-day rift axis. The velocity structure within the rift showed low velocity ($3.3 - 4.8 \text{ km s}^{-1}$) sediments near the surface extending to 5 km depth and P-wave velocities slightly faster (0.5 km s^{-1}) than normal continental crust within the rift (6 km s^{-1}). The best estimate for crustal thickness in this area of the MER, constrained using Moho refracted and reflected waves in combination with receiver function analysis, was 35 km (Cornwell et al., 2010; Maguire et al., 2006).

Local seismicity, detected between 2001 and 2003 using a regional scale seismic network was characterized by two clusters of earthquakes (Keir et al. 2006a). One cluster was located beneath the TM edifice at depths between 4 and 11 km, the other, more active cluster was located south of Bora and extended between the surface and 20 km depth. It is worth noting that the closest seismic station to B-TM was more than 15 km away meaning the depths reported by Keir et al. (2006a) may have large errors.

While no detailed seismic studies have been published on B-TM, a dense seismic network deployed between 2012-2014 instrumented Aluto, a volcano located 50 km to the south of

the study area (Wilks et al., 2017). The paucity of local seismicity recorded in the MER makes Aluto the best volcano to compare our study of B-TM to. Within 15 km of Aluto more than 1300 events were clustered into a weakly linear orientation parallel to the rift and centered on Aluto. In depth, most (53%) earthquakes were shallower than sea level and only 7% were located deeper than 9 km. The seismicity revealed a shallow geothermal reservoir, additionally constrained using magneto-telluric methods (Samrock et al., 2015), at depths shallower than sea level. The seismicity within the reservoir was seasonally modulated by loading of the nearby lakes (Birhanu et al., 2018). *Wilks et al.* (2017) proposed a heavily intruded layer between 2 and 9 km bsl, with volatile-rich lenses. The top of this layer hosts the best-fitting deformation source imaged using satellite derived deformation measurements between 2004 and 2010 (Biggs et al., 2011; Hutchinson et al., 2016). Two cycles of uplift and subsidence were imaged and interpreted to be caused by a physical connection between the magmatic and hydrothermal systems. The intrusion of magmatic fluids at a depth of 5 km caused uplift which relaxes by volatile exsolution and degassing. Below 9 km bsl the abrupt change to relatively little seismicity suggests that 9 km bsl is the brittle-ductile transition beneath Aluto. Below this, a mushy, aseismic magma reservoir is proposed (Wilks et al., 2017).

Eighty kilometers south-west of Aluto, the volcano Corbetti has also been the site of geophysical observations. Surface deformation measurements have revealed sustained uplift of the volcano since at least 2012 (when measurements began) (Lloyd et al., 2018b). The depth of intrusion was calculated to be 6 km and coincided with the location of a conductive region (Gíslason et al. 2015). Seismicity measured using a fairly sparse network recorded only 224 earthquakes over a two-year period during uplift. The seismicity was

located around the high conductivity region within more resistive areas of the crust (Lloyd et al., 2018b).

Little is known about the long-term surface deformation of the B-TM region. Between 2004 and 2011 two pulses of uplift and subsidence were observed using InSAR (Biggs et al., 2011).

Uplift of 5 cm was focused at the Bora volcanic center, deformation that was best fit by a shallow (<2.5 km) penny-shaped crack with a radius of 3-10 km. While the observed displacement was not as much as that observed around Aluto or Corbetti, the presence of deformation shows that Bora could currently be active and magma could be currently intruding into a shallow magma reservoir.

2.3 Seismic anisotropy

The dominant mechanisms for upper-mantle and crustal anisotropy in Ethiopia are summarized in *Kendall et al. (2006)* and *Hammond et al. (2014)*. The preferential alignment of segregated melt at depth holds the signature of strain accommodation along the plate boundary (Holtzman & Kendall, 2010). There is likely to be strong anisotropy due to the layering of sediments and volcanics in the upper 5km of the rift valley (Bastow et al., 2010), but vertically propagating body waves, as used in our study, will not be sensitive to this style of anisotropy.

Shear wave splitting in crustal earthquakes in the MER have been reported in Keir et al., (2005), *Keir et al. (2011)*, *Nowacki et al. (2018)* and *Lloyd et al. (2018a)*. *Keir et al. (2011)* studied the crustal scale anisotropy of the MER and Red Sea Rift. In general, the fast directions are orientated parallel to rift structures. Two stations from *Keir et al. (2005)* were located close to the B-TM volcanic area: AMME (10 km north of TM) and E53 (near the town

Ogolcho, Figure 1). *Keir et al.* (2005) recorded fast directions (ϕ) as $356^\circ \pm 5^\circ$ and $19.0^\circ \pm 1.5^\circ$ respectively. The magnitude of shear-wave-anisotropy (SWA) at the same stations was 3.11% and 2.91%, respectively.

More recently, *Nowacki et al.* (2018) studied the SWA around Aluto. The observed pattern of SWA was complex, with interactions between two fracture systems used to explain variations in ϕ near the edifice. The amount of SWA was found to increase towards the center of the volcano reaching a peak of 4%. The SWA was also found to be concentrated at depths less than 3 km bsl. *Nowacki et al.* (2018) concluded that high gas overpressure in a geothermal reservoir maintains fluid flow in multiple fracture sets.

Lloyd et al. (2018a) presented observation of seismic anisotropy near Corbetti volcano. They observed fast shear wave polarizations that parallel pre-existing, cross-rift structures. *Wadge et al.* (2016) discuss the broader implications for the state of stress in East African Rift (EAR) volcanism, including constraints from such shear-wave splitting observations. Based on a range of observations, including anisotropy, they conclude that the state of stress in the volcanic systems of the EAR is complicated and often affected by pre-existing structures and temporal changes in magmatism.

3. Seismic Network

A network of eight 3-component, broadband seismometers was deployed around B-TM in February 2016. It was further augmented with 5 additional seismometers in February 2017 (Figure 1). All instruments were either Guralp CMG-6TD (30 s corner frequency) or Guralp CMG-ESPCD (60 s corner frequency) and were buried at least 1 m deep in the ground.

Accurate timing was maintained by syncing internal clocks to the timing signal provided by the Global Positioning System. The instruments were powered by a single 20 W solar panel and a 60 Ahr car battery. The risk of instrument theft or vandalism is high in Ethiopia and so sites were chosen largely on the basis of good security. The majority of sites included fenced compounds already with a local guard, such as schools, medical centers, government offices and military camps. Data were stored on internal hard drives at 50 samples-per-second and downloaded in the field approximately every 6 months. All instruments were retrieved in October 2017, resulting in 1.5 years of data.

The requirement to place instruments close to people means anthropogenic noise is very high during the day. Anthropogenic noise typically ranges between 2 – 25 Hz and overlaps the frequency content of the detected earthquakes (1-10 Hz). This significantly affects the ability to detect earthquakes during the day. As a result, 4-5 times more earthquakes were detected at night (see Figure S1 for an example). In contrast, microseism noise levels are low, close to the new-low-noise-model (NLNM) (Peterson, 1993), presumably as this area of Ethiopia is far from the coast (see Figure S2).

4. Earthquake catalog generation

We detect and locate seismicity using the Coalescence Microseismic Mapping (CMM) technique (Drew et al., 2013). The raw seismic data are filtered between 2-16 Hz and then a characteristic function (CF) is calculated using the average in a short window (0.1 s) divided by an average in a long window (10 s). The length of the windows is chosen to maximize earthquake detections while limiting triggering due to artefacts. Peaks in the CF below a signal-to-noise ratio of 3 are removed while those above have a Gaussian function fitted to

them. The CF from all the stations is then migrated through a pre-calculated 3D travel-time look-up table to generate a coalescence function. Peaks in this coalescence function indicate the origin time and hypocentral coordinates of an earthquake. To generate our catalog, we keep only those events with an overall signal-to-noise ratio greater than 3.

The 3D travel-time look-up-table used to migrate the CF contains stations embedded within a cartesian grid (i.e., including station elevations). Topography is not explicitly included allowing earthquakes to locate above the surface of the Earth. We allow these 'airquakes' to increase the number of earthquake detections in the knowledge that subsequent relocation usually moves the offending events to below the surface. We populate the 3D travel-time grid using the 1D velocity model for Aluto from Wilks et al. (2017). We expect the true velocity model for B-TM to be laterally heterogeneous because of the numerous faults and lateral variability in magmatism and heat flow. However, 1D velocity models are a simplification of the 3D velocity structure and capture the bulk of the seismic velocity variation (i.e., with depth). Some improvements to the earthquake locations can be gained by using 3D velocity models, but these would not substantially change the results presented in this study.

Using the velocity model of Wilks et al. (2017) we detect ~1200 events with a signal-to-noise ratio greater than 3. These earthquakes form an initial catalog which we can interrogate to gain further insight into the structure of the B-TM region. In particular, we first aim to improve the earthquake locations by generating a more appropriate 1D velocity model and refining the arrival time picks.

4.1 1D velocity model calculation

We use the program VELEST (Kissling, 1988) to simultaneously invert for the earthquake locations, a 'minimum 1D-velocity model' (i.e. a well-suited velocity model for earthquake location) and station corrections. VELEST solves the coupled earthquake location-velocity model problem using full-inversion of the damped least-squares matrix. Because of the non-linear nature of the inversion, the solution is obtained iteratively.

An important part of the inversion for a minimum 1D velocity model is to fully explore the parameter space. This relies on trialing a large range of starting models and then converging on the best-fitting, geologically reasonable model. Most 1D velocity models have similar features: a high velocity gradient in the upper crust, a sharp change in the gradient at some depth and a low velocity gradient in the lower crust. This model has 3 unknowns: the velocity at the surface, the velocity at the gradient change and the depth of the gradient change. To explore the parameter space, we generate a suite of initial velocity models by varying the three identified parameters using geologically reasonable ranges. The final model, including station corrections, is that which minimizes the RMS misfit with geologically reasonable earthquake locations and seismic velocities.

Calculation of the velocity first proceeds by generating a catalog of events which have a large number of accurate P- and S-wave arrival time picks and are located within, or close to, the footprint of the array. We select 300 events from the CMM catalog which have a high signal-to-noise ratios (>5) and manually refine the arrival times of each event. We then select those events which have more than 6 manually refined arrival time picks. This leaves us with a catalog of 251 well located events to use in VELEST (Figure S3). All of these events

are located at depths less than 9 km bsl. As such, the derived velocity model is only for the upper crust.

The V_p/V_s ratio calculated from VELEST is not smooth because VELEST performs a separate inversion for P- and S-wave velocity structure (Figure 2). We chose to use a fixed V_p/V_s ratio to calculate the S-wave structure rather than that output from VELEST. To calculate this V_p/V_s ratio we calculate the V_p/V_s recorded by each earthquake using the method of *Wadati* (1933). In this technique, the V_p/V_s ratio for each event is calculated by plotting the P-wave arrival time against the time delay between the P- and the S-wave arrival time for each station that records the earthquake. The gradient of this line is proportional to the V_p/V_s ratio. The mean V_p/V_s ratio is 1.7793 (Figure 3), similar to the Iceland rift (Greenfield et al., 2016) and higher than observed in regional Ethiopian studies (1.75, Keir et al., 2006a). Earthquakes are commonly clustered in depth around sharp changes in velocity; to avoid this, we have linearly interpolated the velocity model output from VELEST to generate the final model (red lines, Figure 2).

4.2 Comparison to other areas of the MER

The local, 1D, seismic velocity model has been calculated in this study for B-TM. The only previous model covers the entire rift (Daly et al., 2008). To locate earthquakes around Aluto, *Wilks et al.* (2017) used a priori information from boreholes to constrain the upper 2 km of the crust and a regional model (Daly et al. 2008) for the remaining part of the crust. The model for B-TM is slower in the upper 5 km of the crust than the regional model and is ~ 1 km s⁻¹ faster at greater depths. The rift-wide model includes areas which are influenced by volcanism and others with little volcanism but a large amount of sediments. As such, the model is an average and is possibly not the best to use in local networks beneath volcanoes

where high-velocity intrusive bodies are present in the crust and low-velocity ash-falls and lava flows are located near the surface. The active-source model from *Maguire et al.* (2006) passed close to the B-TM area. The upper parts of the crust in the model had a velocity of 6.2 km s^{-1} similar to the value we calculate. Near the surface, velocities in the *Maguire et al.* (2006) model reached a minimum of 3 km s^{-1} , similar to the *Wilks et al.*, (2017) model, but faster than the model we present here. The near surface is poorly constrained in all velocity models as there are few earthquakes at these depths, which may account for the differences between the models.

4.3 Refined Earthquake Catalog

We refine the ~ 1200 CMM detected and located events by manually picking the arrival times for every event detected by CMM. Weights are assigned to each pick by considering the quality (i.e. sharpness) of the arrival and converted into a time-pick error. We use a scheme in which the best quality arrival time picks (weight = 0) have an error equal to the sampling interval (0.02 s). There are three lower weights (1, 2 and 3) with time pick errors of 0.05 s, 0.1 s and 0.5 s respectively. Phases with a weight of 4 are not used and are assigned very high errors (9999 s). This step removes traces which do not record the detected earthquake and negatively contribute to the CMM generated location.

The program NonLinLoc (Lomax et al., 2009) is used to relocate the manually refined events with the minimum 1D velocity model calculate using VELEST. NonLinLoc produces optimal earthquake locations by efficiently sampling the location probability density function (PDF) built using a likelihood function. We choose to use the Equal Differential Time likelihood function (Font et al. 2004) as it is more robust to the presence of outliers than the traditional least-squares, L2-norm likelihood function. The PDF is sampled using an oct-tree

approach in which 3-dimensional cells are recursively divided to create a cascade of sampled cells. The density of the sampled cells follows the PDF values of the cell. The advantage of the oct-tree approach is that complex PDFs can be imaged much faster than using exhaustive grid-search techniques. Beneath B-TM earthquake location PDFs were mostly unimodal with depth errors of approximately 1.5 km. Some shallow earthquakes had bimodal earthquake locations PDFs. We chose to use the deeper location as they matched the location of the surrounding, better located earthquakes. By using NonLinLoc, manually refined arrival time picks, an optimized velocity model and P-wave station corrections we reduce the overall root-mean-square misfit by 25%. The final catalog contains 1012 events with an average number of picks per event approximately equal to 8.

4.4 Earthquake magnitudes

The magnitude of the detected earthquakes (M_L) are calculated using the equation from *Keir et al. (2006b)*,

$$M_L = \log A_{WA} + 1.196997 \log r/17 + 0.001066(r - 17) + 2 + C, \quad (1)$$

where A_{WA} is the maximum zero-to-peak amplitude corrected to the response of a Wood-Anderson seismograph, C is an individual station correction and r is the hypocentral distance in kilometers. We attempted to invert for a new local magnitude scale using the earthquakes recorded around B-TM. This would highlight any significant differences between the attenuation structure of B-TM compared to the wider rift. However, the magnitudes calculated using the new equation were identical (within the expected error of at least ± 0.1 magnitude units) to the original *Keir et al. (2006b)* equation. Instead, we calculate individual station corrections for the stations used in this study to reduce the error in the magnitude and account for near surface structure. Local magnitudes vary between 0 and 2.7, although the magnitude of completion (M_c) is approximately 1.3. The Gutenberg-

Richter b-value (b) and its accompanying error (σ_b) is calculated using the following equations (Aki, 1965),

$$b = \frac{1}{\ln 10} \frac{1}{\bar{M} - (M_c - \Delta M/2)},$$
$$\sigma_b = 2.3b^2 \sqrt{\frac{1}{n(n-1)} \sum_{i=1}^n (M_i - \bar{M})^2} \quad (2)$$

where \bar{M} is the mean magnitude in the catalog, ΔM is the magnitude binning width, M_i is the magnitude of earthquake, i , and n is the total number of earthquakes in the catalog. The data shows a good straight line fit at lower magnitudes (Figure 4) but a change in slope is observed at local magnitudes greater than 2.2. This is probably caused by the limited length of time our network was deployed not allowing us to see the full earthquake-size distribution. The overall b-value for the B-TM region is 1.32 ± 0.07 (Figures 4, S4 and S5) and there are no significant differences when our data is split into separate clusters (Figure S6). The b-value is significantly higher than the global average of 1 (El-Isa & Eaton, 2014), but similar to that observed nearby at Aluto (1.40 ± 0.14) (Wilks et al., 2017).

4.5 Fault plane solutions

Fault plane solutions (FPS) are calculated using first motion P-wave polarities picked on this catalog of well-located events. We invert for the best fitting FPS by following a Bayesian approach outlined in *Pugh et al. (2016)* and implemented in the program MTFIT (Pugh et al., 2018). The method allows for the robust inclusion of measurement and location uncertainty estimates in the final PDF. This PDF is determined over the entire moment tensor space given the observed data which can be polarity picks, amplitudes or amplitude ratios.

We use only P-wave polarity picks to calculate FPS because the amplitudes generated from this noisy dataset with small magnitude earthquakes degraded the final solutions. We also

constrain the solution to be double-couple because of the low number of polarity picks (the maximum possible is 12). Tests reveal that no event requires non-double-couple (NDC) components in order to explain the observed polarity distribution, but we cannot preclude the possibility that some events may have NDC components. FPS are calculated for those events with more than 5 P-wave polarity observations, although many of the events were too poorly constrained to display. From a total of 96 events with more than 5 polarity observations we calculate 15 well constrained FPS (Figure 5 and Figure S7). Poorly defined FPS often have more than one solution with large variability in the strike, dip and rake parameters.

Every FPS, except two, indicates normal fault failure. Eight contain fault planes which are sub-parallel to the WFB and record the predicted failure in this extensional environment. Five contain faults planes at significantly oblique angles to the predicted trend and indicate variability in the orientation of the ruptured faults.

5. Earthquake Location Analysis

The earthquake catalog highlights three persistently active regions (Figure 4). The most active region is located between the volcanic centers of Bora and TM (red colored circles, Figure 4). This cluster (earthquakes closely spaced in space but not necessarily with time) is elongate east-west and contains 54% of the total number of detected earthquakes. These earthquakes occur in at least eight swarms (earthquakes closely spaced in time and space) (red arrows, Figure 6). To the north of this cluster, a cluster of low magnitude events is located within a broader region of distributed seismicity (cyan colored circles, Figure 4). Earthquakes within this region are outside the footprint of the array between Feb. 2016 -

Jan. 2017, until additional stations are deployed in February 2017 (see Figure 1 for locations). The earthquakes within this cluster are associated with Bora and also occur in swarms (cyan arrows, Figure 6). Significant swarms occur in May and August 2016 and a number of smaller swarms occur in January 2017. The last significant cluster of seismicity occurs beneath TM (yellow colored circles, Figure 4). The cluster contains 110 events (11% of the total). In contrast to the other clusters, earthquakes located here do not occur within swarms but are generated continuously during the observational period (yellow colored circles, Figure 6).

In depth, the earthquake distribution is peaked at depths between 0.5 and 1 km bsl (Figure 5). Only 70 (7%) earthquakes are located shallower than sea level and only 23 (2%) earthquakes are located deeper than 5 km bsl. Of the earthquakes shallower than sea level, 24 are located above the surface. These indicate poor arrival time picks and/or heterogeneities in the near surface velocity structure, which are likely to vary significantly across the region. We include them in the catalog as the earthquakes are real and their epicentral locations are likely to be fairly accurate. The high proportion (35%) of shallow (depth < 0 km bsl) earthquakes which are airquakes suggest that the depths of many shallow earthquakes are underestimated and that most seismicity in the area is deeper than 0 km bsl. Most earthquakes deeper than 5 km bsl are located near the edge of the study area, away from the volcanic centers. This suggests that a brittle-ductile transition beneath B-TM exists at a depth of between 4 and 5 km bsl (~5.6 – 6.6 km below the surface).

The detected seismicity occurs mainly in swarms. More than 20% of the detected seismicity occurs in the early half of April 2016 (Figure 6). Many more earthquakes than we report

here occurred in this swarm. However, they are only detected by the two nearest stations and thus cannot be well located. Swarms were analyzed to see whether the activity migrates over time, possibly indicating the movement of fluids along the fault plane. We do not observe any swarm migration in the dataset, but with the reported errors being large (>1 km) and swarms being confined to relatively small areas, we cannot rule out any small-scale swarm migration.

The seismicity rate over the length of the deployment is 2.0 detected earthquakes per day. During the first 12 months of the deployment the seismicity rate is higher (2.3 earthquakes per day) although during some swarms the rate is significantly higher than this. The seismicity rate clearly falls for the final 6 months of the deployment (Figure 6) with, on average, only 1.1 earthquakes per day. The fall in seismicity rate cannot be related to changes in the network as the number of stations increases during this period (Figure 6). Any seasonal changes in the seismicity rate, such as those seen around Aluto due to rainfall and lake loading (Birhanu et al., 2017), are not possible to observe in this short dataset.

5.1 Refined earthquake catalog

For further interpretation, we refine the catalog by selecting only those events that are well located. We define a well-located event as having a maximum azimuthal gap between azimuthally adjacent stations $< 270^\circ$, RMS misfit < 1 s and horizontal errors of less than 4 km. A total of 505 events (50%) remain after this filtering process. These limits are more generous than those normally used in earthquake studies, but they increase the number of earthquakes available for interpretation at the cost of some precision. Figure 5 shows only these events located using NonLinLoc. The removal of relatively poorly located events

increases the visibility of the clusters, especially between Bora and TM. Many events were lost from the cyan cluster (Figure 4) as they had very high maximum azimuthal gaps.

Clusters of earthquakes located between Bora and TM illuminate an intensely faulted region with at least two right-stepping, NE-SW oriented, *en-echelon* clusters. Focusing on this region (Figure 7) reveals significant complexity between multiple fault orientations illuminated by different swarms. The along rift cross-section from A to C cuts the most seismically active region in the study area. Coloring the earthquakes in different swarms in different colors reveals discrete faults which rupture during the time period are revealed. The earthquakes indicated by the orange circles occur during August 2016 and are located beneath a volcanic ridge defining part of the Bora caldera (Figure 7). One well-constrained FPS is calculated for an earthquake during the swarm and is a thrust mechanism with a fault plane oriented sub-parallel to the trend of the WFB and the volcanic ridge.

On further inspection, the most active cluster in the region is clearly split into two adjacent clusters. One is oriented sub-parallel to the WFB and is defined by the earthquake swarm in March 2017 (light-blue circles, Figure 7). The other cluster is active during multiple swarms, which are all detected in April 2016 (dark-blue, green and pink circles, Figure 7). While initially appearing to be trending sub-parallel to the WFB, the cross-section reveals that this swarm defines a fault plane dipping to the north-east at an angle of $\sim 45^\circ$. Unfortunately, the events during April 2016 do not have enough observations to calculate a FPS. The April 2016 swarm is located shallower than the March 2017 swarm and it would therefore appear that the two faults do not cross at depth.

Further north, a well-defined fault is clearly imaged in the cross-section from B to C (Figure 7). The fault dips to the south-east at a low angle ($\sim 20^\circ$). By coloring earthquakes which define this plane purple, it is clear this fault is active throughout the experiment but is especially active during May 2016, September 2016, and in a number of smaller swarms during January 2017. These swarms are active for a couple of weeks, in contrast to swarms active to the south which are typically active for fewer than 3 days. No events within this cluster have good FPS, although deeper events located in the same area have extensional mechanisms with a range of fault plane strikes. The surface above this cluster is heavily altered due to hydrothermal processes (orange regions, Figure 7) suggesting that seismicity may be reflecting the movement of hot fluids in this area.

6. Frequency content

The frequency content of earthquakes can be useful in interpreting the mechanisms driving seismicity in an area and is influenced by the earthquake source mechanism and the properties of the area imaged by the earthquake. Around volcanoes, a large variation in the frequency content of earthquakes can be observed (see *McNutt (2005)* for an overview). Typically, these are split into discrete categories: volcano-tectonic (VT), long-period (LP) and hybrid events, but in reality, the variation is a continuum. VT events are traditional earthquakes which contain high frequencies and typically have impulsive onsets. In contrast, LP events contain predominantly low frequencies (< 5 Hz) and often have emergent arrivals which can be difficult to pick accurately making them difficult events to locate. Hybrid events often have high frequency, impulsive onsets but have a long, low frequency trailing coda.

We analyze the frequency content of earthquakes within our NonLinLoc catalog by calculating a Frequency Index (FI) for each event (Buurman & West, 2006). The FI expresses the ratio between the amount of energy in a low frequency band (0.6-1.2 Hz) and that in a high frequency band (6-12 Hz). A logarithm (base 10) is used to rescale the difference in FI and aid plotting and interpretation,

$$FI = \log_{10} \frac{\overline{A}_h}{\overline{A}_l}, \quad (3)$$

where \overline{A}_h and \overline{A}_l are the mean amplitudes in the high frequency and low frequency windows respectively. The FI will vary with distance from the source depending on the amount of attenuation between source and receiver. By considering the effect of attenuation on (3) it can be seen that

$$FI(r) = \frac{r}{2Qv} (\overline{\omega}_l - \overline{\omega}_h) \log_{10} e + FI_0, \quad (4)$$

where FI_0 is the FI at the source (zero offset), Q is the seismic quality factor, r is the distance and v is the propagation velocity. $\overline{\omega}_h$ and $\overline{\omega}_l$ are the mean angular frequencies in the higher and lower frequency windows respectively. Assuming Q to be constant, (4) shows that, to first order, FI will decrease monotonically with increasing hypocentral distance.

The top panel of Figure 8 shows how the FI for each observation varies with raypath length. A clear trend is observed but it is not a straight line (as predicted by Equation 4). To compare the FI_0 between events, the dependence of FI with distance must be removed. We remove this dependence by considering the change in FI through a simple 1D attenuation model,

$$FI(Q, r)_{i,k} = FI_{0,i} + \log_{10} e \sum_j \frac{r_{i,j}}{Q_j v_j} (\overline{\omega}_l - \overline{\omega}_h) + C_k, \quad (5)$$

where the symbols are as in (4) except that the FI for event, i , calculated at station, k , includes the effect of attenuation through layer j . We also include a station correction term, C_k . Equation 5 is of the form $Ax = b$ and can be solved for the FI_0 of every event, station corrections and a depth dependent Q model. We use a least-squares approach to solve (5) and include a requirement that the Q model is smooth by adding a regularization term,

$$\begin{pmatrix} A \\ \lambda L \end{pmatrix} x = \begin{pmatrix} b \\ 0 \end{pmatrix}, \quad (6)$$

where L is a regularization matrix of the form,

$$\begin{pmatrix} 0 & & \dots & & & & 0 \\ & \ddots & & & & & \\ & & 0 & & & & \vdots \\ \vdots & & & -2 & 1 & & \\ & & & 1 & -2 & 1 & 0 \\ & & & & 1 & -2 & 1 \\ 0 & \dots & & 0 & 1 & -2 \end{pmatrix}, \quad (7)$$

and λ is a parameter (Lagrange multiplier) which can be adjusted. L is formed using a second order finite-difference operator in the bottom corner so only the Q model is constrained to be smooth. We also require Q to be positive and that the sum of the station corrections is equal to zero. This avoids any numerical instabilities during the inversion.

A range of layer depths for the Q model are trialed, calculating the distance each ray spends in each Q layer in addition to the average shear-wave velocity. A Q model with 1 km thick layers to a depth of 5 km and a halfspace below this produced the best fit to the data. The final Q model is shown in Figure 8. Q decreases from a surface value of 280 to a minimum of 115 at a depth of 2 km bsl.

After a correction for Q most events have a FI between 1 and 2 (Figure 9). There are however, a small number of events with an FI as low as -4. These contain much more low-

frequency (LF) energy. This feature is clear in the seismic waveforms of the seismicity (Figure 10) and is characterized by peak frequencies between 0.6 and 1 Hz (Figure 10). The LF nature of this seismicity cannot be a path effect as volcano-tectonic (VT) earthquakes with high FI values are located in similar locations and the LF earthquakes have a similar magnitude to the VT seismicity. The arrivals of P- and S-waves are impulsive (Figures 10 and 11), making the seismicity relatively easy to locate with small errors similar to VT seismicity. In fact, because the LF energy is at longer periods than the anthropogenic noise, the LF events are detected at stations farther away than the VT seismicity. Most of the LF events locate beneath TM (red circles, Figure 5), suggesting the source of this unusual seismicity is associated with TM.

7. Seismic anisotropy

We investigate the seismic anisotropy of the B-TM volcanic complex by evaluating shear-wave-splitting (SWS) observed in events from the refined NonLinLoc catalog. In an anisotropic medium, an incident shear wave is split into two orthogonal components, with one component propagating faster than the other. SWS measurements are made by calculating the polarization of the faster component (ϕ) and the delay time between the fast and slow component (δt).

Seismic anisotropy reflects structural order within an elastic body and leads to variations in seismic velocities with direction. SWS is arguably the most unique indicator of seismic anisotropy, but there are many mechanisms for anisotropy. Deformation can lead to the lattice- or crystal-preferred-alignment of minerals (e.g., olivine in the upper mantle Mainprice et al., 2013) or phyllosilicates in sedimentary rocks (e.g., Valcke et al., 2006). On a

larger scale, the rhythmical layering of structures with contrasting elastic properties also leads to directional variations in seismic velocities (e.g., Backus, 1962). In the shallow crust, the alignment of cracks or fractures parallel to the direction of maximum horizontal compressive stress is thought to be a primary mechanism for anisotropy. Here, the fast shear wave is polarized parallel to the orientation of the cracks or fractures (e.g., Booth & Crampin, 1985). The style of anisotropy is sensitive to the degree of fracture connectivity and nature of the fluids (see, e.g., Baird et al., 2018). Regardless of cause, the aligned structures must have lengthscales much less than the seismic wavelength.

7.1 Shear wave splitting analysis

To calculate δt and ϕ from the raw waveforms we follow the technique of *Silver & Chan* (1991). The shear wave arrival is windowed and the particle motion of the two horizontal components are analyzed. If anisotropy is present, the S-wave particle motion will be elliptical or cruciform (although at these near offsets a cruciform particle motion is unlikely). A grid search is performed over all possible values of δt and ϕ , where the two horizontal waveforms are rotated by ϕ and shifted by δt . The best-fitting values are those that minimize the second eigenvalue of the corrected particle motion covariance matrix. This signifies that the particle motion is approximately linear. This analysis also determines the source polarization of the shear wave before propagating through the anisotropic medium. Errors in δt and ϕ are calculated using an F-test. This technique is highly dependent on the window chosen, as well as other parameters such as filtering applied to the data. To obtain the highest quality results we use a range of window lengths and pick the most stable results using cluster analysis (Teanby et al., 2004). In addition, a range of filters are used and the 'best' result picked (Savage et al., 2010).

We use our catalog of manually picked events as input for SWS analysis. This contains the high-quality S-wave picks required for analyzing SWS. We choose only those earthquakes which lie within a shear-wave-window (Booth & Crampin, 1985), thus avoiding effects caused by S-to-P conversions at the free-surface. We choose an angle of 55° from vertical, larger than the critical angle that would typically be used ($\sin^{-1} V_S/V_P \approx 35^\circ$). However, because of low, near-surface velocities, rays are steeper at the station than the straight-line path used to calculate the shear-wave-window.

We manually grade the SWS observations into one of three categories: A (best), B (acceptable) and X (not used). An example of each grading is shown in Figure 12. We grade observations based on error in δt and ϕ , linearity of the particle motion after correction, stability of the clustered solutions for δt and ϕ and minimal energy on the component transverse to the initial source polarization after correction. From a total of 1170 observations, 125 are graded A (10%), 214 are graded B (18%) and the remaining observations are graded X. It is worth noting that within the X graded observations are those where no splitting is observed. Such null observations could be due to wave propagation through an isotropic medium, but in this environment, this is more likely due to the initial source polarization being aligned with the fast or slow shear wave polarization. In reality though, distinguishing nulls due to alignment or due to noise is difficult and we don't interpret the nulls in this study.

Results from the SWS analysis are displayed in Figure 13 as bars plotted at the midpoint of the raypath between source and receiver. The length of the bar is proportional to the amount of anisotropy while the direction of the bar indicates the orientation of the fast

direction. Most measurements extend in a band between TM and Bora in a southeast-northwest orientation. Another cluster of measurements is made to the north of this band.

We normalize δt by the distance travelled along the raypath using,

$$\delta t = t_{slow} - t_{fast} = \frac{s}{v - \frac{1}{2}av} - \frac{s}{v + \frac{1}{2}av}, \quad (3)$$

where t_{slow} and t_{fast} are the S-wave travel times of the slow and fast shear waves, respectively, and s , a and v are the distance along the raypath, fractional anisotropy (varying between 0 and 1) and the average shear-wave velocity, respectively (Thomas & Kendall, 2002). Rearranging (6),

$$a = -\frac{2s}{\delta tv} \pm \sqrt{4 + \left(\frac{2s}{\delta tv}\right)^2}, \quad (4)$$

where only the positive solution is valid for anisotropic strength to vary between 0 and 1.

We use the hypocentral distance as the length of the raypath, which better approximates the length of the raypath length than the epicentral distance for these earthquakes. A shear-wave velocity of 2.24 km s^{-1} is used which is the S-wave velocity in the earthquake nucleation region. We observe up to 10% anisotropy, although the bulk of the measurements lie between 2% and 6% (Figure 13). Any depth dependence of the anisotropy is difficult to analyze because of the limited depth distribution of the seismicity and high uncertainty in earthquake depth. *Nowacki et al.* (2018) observe that the bulk of the observed anisotropy around Aluto is concentrated into the top 3 km. Initially, the results of this study appear similar. In *Nowacki et al.* (2018), the apparent strength of anisotropy decreases progressively at depths greater than the actual anisotropic layer. This is because the splitting magnitude is normalized over the entire raypath, even if it transits deeper

isotropic regions. In contrast, Figure 13 shows little correlation between anisotropy magnitude and depth. A few low anisotropy observations are from the deepest events, but some of the largest are also from the deepest events. A broader depth distribution of seismicity beneath B-TM would be required to analyze any variations in the strength of anisotropy with depth.

7.2 Results and interpretation

The overall distribution of SWS fast directions has a broad peak between 015° and 045° similar to the distribution of fracture trends observed around B-TM of 015° - 030° (Figure 14). However, observations at individual stations show significantly more variation (Figure 13). We can interpret the SWS fast-direction orientations by considering the cause of this variability. Within the upper crust, most seismic anisotropy is caused by the alignment of microcracks at wavelengths smaller than the seismic wavelength (Crampin & Booth, 1985). This orientation of these cracks is the result of an interplay between stresses due to regional tectonics, local volcano-tectonic stresses and any pre-existing structures. Around B-TM, distinguishing between these mechanisms is difficult without a larger dataset.

The four stations located in the south-western corner of Figure 13 show a high degree of similarity in the observed ϕ distributions. The dominant direction at each station is NE-SW, similar to the orientation of the WFB. Stations in the east of the study area show a more N-S oriented ϕ distribution. This is possibly the result of a subtle change in the orientation of the faults within the WFB around TM (Figure 13). This is most clear at the station ANOL (see Figure 13 for location) where individual measurements (mostly graded B) are parallel to the nearby faults exposed at the surface. The change in the WFB orientation is likely caused by the local stresses around TM.

The one station in the north of the area (GEBI, Figure 13) contains a very different ϕ distribution, with a dominant E-W direction. The earthquakes from which these observations are derived are located within the northern cluster of earthquakes (Figures 5 and 13) and are different to the earthquakes which are used at the other stations in the area. This could be the reason why few E-W ϕ are observed at any other station. It is interesting to note though that the few observations from these earthquakes recorded at the station TULL (circled red, Figure 13) are oriented NW-SE, significantly different to the dominant ϕ at TULL (NE-SW). This suggests that ϕ at TULL is dependent on back-azimuth and therefore the anisotropy is spatially heterogeneous.

SWS observations around B-TM reveal the complex stress pattern induced around volcanoes due to local and regional stresses. The dominant orientation of ϕ is sub-parallel to the rift indicating that the regional stress exerts a strong control on ϕ . However, the variability in ϕ (Particularly at TULL and GEBI) shows that local stresses around the volcano significantly modify ϕ . This is similar to that observed at Aluto where *Nowacki et al. (2018)* matched the observed ϕ on the Aluto edifice to two competing fracture orientations. In contrast, ϕ beneath Corbetti is dominated by pre-existing fault structures (Lloyd et al., 2018a), although the seismic network and earthquakes used to generate these observations limit the spatial coverage of ϕ observations. Around B-TM, we suffer from similar difficulties, making quantitative analysis of the contribution of different fracture orientations impossible.

8. Discussion

8.1 Bora – Tullu-Moye seismicity

Seismicity around B-TM is closely associated with the expression of volcanism, being centered around TM, rather than the tectonically generated features within the WFB. This result is to be expected as strain rates measured around volcanoes (cm yr^{-1}) are an order of magnitude higher than tectonic extension ($5\text{-}6 \text{ mm yr}^{-1}$, Bendick et al., 2006). The regional extensional stress regime has the effect of biasing the style of faulting to be normal but local stresses induced by the volcano causes some the earthquakes to exhibit compressional style faulting.

We use the depth distribution of the seismicity to constrain the brittle-ductile transition. Beneath B-TM, we observe few earthquakes deeper than 5 km bsl. If this depth represents a brittle-ductile transition, then a high geothermal gradient (approx. $60 \text{ }^\circ\text{C/km}$) is required, indicating the presence of a heat source at depth. Given that the seismicity is predominantly located near TM, we suggest that the heat source is located beneath TM rather than Bora. Such a heat source is required in order to drive the hydrothermal circulation observed around B-TM. The fluids involved in the hydrothermal circulation could be sourced directly from the magmatic body degassing, or indirectly via meteoric water interacting with the elevated geothermal gradient. Geochemical evidence from other volcanoes in the MER show that the bulk of the water found in hydrothermal fluids is sourced from rainwater (Darling et al., 1996) and we suggest the same is likely here.

Fluid circulation can cause locally high-pore-fluid pressures which act to lower the normal stress. This causes the triggering of earthquake swarms with high b-values (Sholtz, 1968; Farrell et al., 2009; Wyss, 1973) and at low angles to the maximum compressive stress (Collettini & Holdsworth, 2004). Around B-TM, seismicity predominantly occurs within swarms, and the overall b-value is much higher than the average global value. In addition, if we assume the purple cluster in Figure 7 to be an extensional fault, then high-pore-fluid pressures could be the reason for the unusually low dip. Fluid circulation therefore plays an important role in determining where seismicity occurs beneath B-TM and thus the seismicity can be used to image fluid pathways through a network of fractures in the crust. These seismically imaged fluid pathways could be targets for possible geothermal power generation.

Given the low amount of seismic moment released during the swarms of earthquakes beneath B-TM, we suggest that rather than new fractures being formed, pre-existing fractures are utilized. We might expect the structures related to the WFB to dominate the fracture network within the crust. Indeed, the fast shear-wave orientations are broadly parallel to the WFB trend. However, the cluster orientation (Figure 7), FPS (Figure 5) and details of the SWS observations (Figure 13) reveal a significant amount of variability in the orientation of fractures at depth. Such fractures are either not dense enough to significantly alter the fast shear-wave orientation or reveal that SWS is caused by stresses only. This is different to Aluto, where interacting NE-SW WFB fractures and E-W trending caldera structures cause fast shear-wave directions to be $\sim 60^\circ$ (Nowacki et al. 2018).

A possible origin for the variability in the pre-existing fault network orientation are structures associated with the Precambrian crust underlying the MER. N-S rifting occurred during the Mesozoic (Corti et al., 2009) and the cross-rift structures produced may have been reactivated as recently as the Pleistocene (Corti et al. 2018). Cross-rift structures are particularly evident beneath Corbetti (but also elsewhere in the East African Rift system, e.g., Robertson et al., 2016) where a significant pre-existing E-W oriented structure causes: east-west elongation of the caldera, differences in uplift between the north and south, prominent changes in the resistivity between north and south and, east-west oriented fast shear-wave directions (Lloyd et al, 2018a). Around B-TM there are no mapped cross-rift structures (Corti et al., 2009; 2018), suggesting that any regional ancient fabrics are either not present or not strong enough to cause the local variability fracture orientation.

Instead, we suggest that the variability is caused by structures related to the formation of a number of calderas in the region. At least two, but possibly three calderas are mapped around B-TM (Figure 1). These are undated but could be related to a series of large caldera forming eruptions across this region of the MER between 180 and 320 ka (Hutchison, et al., 2016). Both Bora and TM host calderas which overlap in the region where most seismicity is recorded. As mapped in Figure 1, the TM caldera is the most recent as it cuts the Bora caldera and is less infilled. The southern cluster of earthquakes in Figure 7 could be related to hydrothermal fluid flow inducing failure on caldera faults at this location. The swarms, active during April 2016 (dark-blue, green and pink colored circles, Figure 7), dip to the north-east, parallel to the TM caldera at this location. In contrast, the other highlighted swarms (indicated by the orange and light-blue circles, Figure 7 and active August 2016 and April 2017 respectively) are parallel to structures associated with Bora.

8.2 Comparison to other volcanoes in the MER

Only two other volcanoes in the MER have been studied using dense seismic networks: Corbetti (Lloyd et al. 2018a) and Aluto (Wilks et al. 2017). All three volcanoes have different seismicity patterns and eruptive activity (Fontijn et al., 2018). This may reflect structural differences between the volcanoes or, given the short observation periods, observations of the volcanoes during different periods of their respective eruptive cycles.

Spatially, there are large differences between the seismicity distributions of Aluto, Corbetti and B-TM. Seismicity around B-TM is clustered onto faults away from the center of the volcanoes, while around Aluto, the seismicity is not clustered but is at its densest at the center of the volcano. The distribution around Corbetti is difficult to interpret because of the high magnitude of completion but seems to be clustered in the center of the caldera at depths above the inflating deformation source (Lloyd et al., 2018a). Aluto, with shallow, distributed seismicity, has a shallow hydrothermal reservoir and exploits a distributed fracture network. In contrast, the hydrothermal reservoir at B-TM is deeper and exploits larger fluid pathways caused by pre-existing faults. Corbetti has SWS dominated by pre-existing E-W oriented structures (Lloyd et al., 2018a). This structure is illuminated by deep seismicity, indicating that it acts as a highway for fluids to migrate through the crust. Such deep, pre-existing, cross-rift structures are not seen beneath Aluto or B-TM and must be less important for controlling the overall structure of the rift.

The seismicity rate is difficult to compare between B-TM, Aluto and Corbetti because of large differences between the density and number of seismic stations deployed. In particular the deployment around Corbetti (Wilks 2016, Lloyd et al., 2018a) only consisted of

a maximum of 5 stations deployed at any one time. We use the parameter a , calculated from the fit to the Gutenberg-Richter law (Section 3.3) to compare the overall seismicity rate. a indicates the number of earthquakes we would expect to find in the region above a magnitude of zero per year. Aluto, Corbetti and B-TM have a -values of 4.41, 4.35 and 4.18 respectively (Wilks et al., 2017, Wilks 2016) indicating that the three volcanoes have similar levels of seismicity.

8.3 Low frequency earthquakes

Low frequency (LF) events around volcanoes in the MER have not been observed before but are frequently observed around many volcanoes around the world (Chouet & Matoza, 2013; McNutt, 2005). LF events are characterized by low frequency waveforms (typically < 2 Hz), long, 'ringing' codas and, emergent phase arrivals (McNutt, 2005). They typically occur at shallow depths (often < 1 km below the surface) and within swarms where event waveforms are highly similar (e.g., Bell et al., 2017). Models to explain LF seismicity include: resonance of a fluid-filled cavity following a brittle-failure 'kick' (e.g., Chouet, 1996; Neuberg et al., 2006) and seismogenic failure of unconsolidated sediments near the surface and wave propagation through a shallow, low-velocity layer (Bean et al., 2013). LF earthquakes around TM are significantly deeper than 1 km below the surface, so neither of these mechanisms can explain the observed seismicity.

Deeper LF events, often with impulsive phase arrivals, can be found beneath some volcanoes round the world (e.g., Greenfield & White, 2015; Koyanagi et al., 1987; Nakamichi et al., 2003). These are often deeper than 10 km below the surface and are associated with the movement of magma through the crust. Around TM, where most of the detected LF events are located in this study, there is little evidence for magma movement within the

crust. We observe no migrating swarms of earthquakes associated with dike or sill intrusions near the surface and there is no surface deformation observed at TM, and therefore conclude that the LF earthquakes are not caused directly by magma movement.

There is however, lots of evidence for the movement of other fluids (e.g., water) beneath TM. In laboratory experiments, rapid movement of fluids have been shown to emit acoustic waves similar to LF events (Benson et al., 2008). However, the LF events generated in these experiments are either emergent or hybrid style events with high-frequency onsets. Such events do not match our observations. The movement of large volumes of fluids also occurs on subduction zone interfaces and in the accretionary prism. In these settings LF earthquakes and tremor are observed and have been proposed to be caused by brittle failure on faults with low confining pressure, probably due to high (near lithostatic) pore fluid pressures and low rupture velocities (Peng & Gomberg, 2010). A similar model, with hydrothermal fluids locally causing high pore fluid pressures, better explains the origin of the LF events beneath TM.

9. Conclusions

We have detected and located more than 1000 earthquakes in the B-TM volcanic region ranging in local magnitude between -0.08 and 2.72. The magnitude of completion for our deployed network is 1.3 and the Gutenberg-Richter b-value is 1.32 ± 0.07 , indicative of low effective stresses which we interpret to be caused by high pore fluid pressures. Earthquakes around the B-TM volcanic center in the MER are highly clustered and occur within swarms. Swarms are likely triggered by the movement of hydrothermal fluids which increase the

pore fluid pressure and cause brittle failure. Hydrothermal fluids are likely heated by a shallow heat source probably located at depths greater than 5 km bsl beneath TM.

The obvious structural orientation in the area, the WFB, provides only weak controls on the orientation of the seismogenic fractures. Instead, we propose that pre-existing fractures, most likely related to a number of volcanic calderas form the fracture network exploited by hydrothermal fluids. Such structures (or the stress that causes them), locally alters the SWS orientation and the strike of fault planes away from the expected rift parallel orientation. Around B-TM, a region where multiple calderas overlap is the most seismically active area because of significant hydrothermal fluid circulation. This region would be an ideal target for geothermal power generation.

Analysis of the frequency content of the earthquakes reveals the presence of LF events. These events occur in swarms and are well-located due to impulsive and easily identifiable P- and S-wave arrivals. The LF earthquakes co-locate with VT events beneath TM. We propose that exceptionally high pore-fluid pressures cause slow rupture speeds and the observed LF events.

Acknowledgements

This research is supported by the NERC through grant NE/L013932/1. Instruments were loaned by SEIS-UK. The facilities of SEIS-UK supported by the Natural Environment Research Council under agreement R8/H10/64. We thank all those involved in field-work; especially Ethioder Tours and the Institute of Geophysics, Space Science and Astronomy (IGSSA), Addis Ababa University without whom the project would not have succeeded. Seismic data is stored at SEIS-UK and although currently embargoed, will be available, open-access, on IRIS (<https://www.iris.edu/hq/>) after

Accepted Article

October 2020. Datasets generated from this study, such as earthquake hypocenters, can be downloaded from the Supplementary Information. Generic Mapping Tools (GMT) (Wessel et al., 2013) was used to make some of the figures and Obspy (Beyreuther et al., 2010) was used extensively for data analysis. Earthquake spectra were calculated using a multitaper spectrum analysis library (Prieto et al., 2009). The use of CMM and computing resources at the Bullard Laboratories was generously supplied by Bob White. We thank two anonymous reviewers and an anonymous associate editor for their thoughtful comments, which improved the manuscript.

References

- Aki, K. (1965): Maximum likelihood estimate of b in the formula $\log(N) = a - bM$ and its confidence limits, *Bull. Earthq. Res. Inst. Tokyo Univ.*, 43, 237-239.
- Aspinall, W., Auker, M., Hincks, T., Mahony, S., Nadim, F., Pooley, J., Sparke, R. S. J., & Syre, E. (2011). *Volcano Hazard and Exposure in GFDRR priority countries and risk mitigations measures*. Bristol University Cabot Institute and NGI Norway for the World Bank: NGI Report 20100806, 309
- Backus, G. E. (1962). Long-wave elastic anisotropy produced by horizontal layering. *Journal of Geophysical Research*, 67(11), 4427-4440. <https://doi.org/10.1029/JZ067i011p04427>
- Baird, A. F., Kendall, J-M., Fisher, Q. J., & Budge, J. (2018). The Role of Texture, Cracks, and Fractures in Highly Anisotropic Shales. *Journal of Geophysical Research: Solid Earth*, 122(12), 10,341-310,351. <https://doi.org/10.1002/2017JB014710>
- Bastow, I. D., Pilidou, S., Kendall, J. M., & Stuart, G. W. (2010). Melt-induced seismic anisotropy and magma assisted rifting in Ethiopia: Evidence from surface waves. *Geochemistry, Geophysics, Geosystems*, 11(6). <https://doi.org/10.1029/2010GC003036>
- Bean, C. J., De Barros, L., Lokmer, I., Métaixian, J.-P., O' Brien, G., & Murphy, S. (2013). Long-period seismicity in the shallow volcanic edifice formed from slow-rupture earthquakes. *Nature Geoscience*, 7, 71-75. <https://doi.org/10.1038/ngeo2027>
- Bell, A. F., Hernandez, S., Gaunt, H. E., Mothes, P., Ruiz, M., Sierra, D., & Aguaiza, S. (2017). The rise and fall of periodic 'drumbeat' seismicity at Tungurahua volcano, Ecuador. *Earth and Planetary Science Letters*, 475, 58-70. <https://doi.org/10.1016/j.epsl.2017.07.030>
- Bendick, R., McClusky, S., Bilham, R., Asfaw, L., & Klemperer, S. L. (2006). Distributed Nubia–Somalia relative motion and dike intrusion in the Main Ethiopian Rift - Bendick - 2006 - Geophysical

310. <https://onlinelibrary.wiley.com/doi/abs/10.1111/j.1365-246X.2006.02904.x>

Benson, P., Vinciguerra, S., Meredith, P., & Young, R. P. (2008). Laboratory Simulation of Volcano Seismicity. *Science*, 322, 249-252. DOI: 10.1126/science.1161927

Beyreuther, M., Barsch, R., Krischer, L., Megies, T., Behr, Y., & Wassermann, J. (2010). ObsPy: A Python Toolbox for Seismology. *Seismological Research Letters*, 81, 530-533.

<https://doi.org/10.1785/gssrl.81.3.530>

Bigazzi, G., Bonadonna, F. P., DiPaola, G. M. & Giuliani, A. (1993) K-Ar and fission track ages of the last volcano tectonic phase in the Ethiopian Rift Valley (Tullu Moye' area), *Geology and Mineral Resources of Somalia and Surrounding Region*, 311-322

Biggs, J., Bastow, I. D., Keir, D., & Lewi, E. (2011). Pulses of deformation reveal frequently recurring shallow magmatic activity beneath the Main Ethiopian Rift. *Geochemistry, Geophysics, Geosystems*, 12, 1-11. <https://doi.org/10.1029/2011GC003662>

Birhanu, Y., Bendick, R., Fisseha, S., Lewi, E., Floyd, M., King, R., & Reilinger, R. (2016). GPS constraints on broad scale extension in the Ethiopian Highlands and Main Ethiopian Rift. *Geophysical Research Letters*, 43(13), 6844-6851. <https://doi.org/10.1002/2016GL069890>

Birhanu, Y., Wilks, M., Biggs, J., Kendall, J-M., Ayele, A. & Lewi, E. (2018), Seasonal patterns of seismicity and deformation at the Alutu geothermal reservoir, Ethiopia, induced by hydrological loading, *Journal of Geothermal and Geophysical Research*, 356, 175-182, <https://doi.org/10.1016/j.jvolgeores.2018.03.008>

Bonini, M., Corti, G., Innocenti, F., Manetti, P., Mazzarini, F., Abebe, T., & Pecskay, Z. (2005). Evolution of the Main Ethiopian Rift in the frame of Afar and Kenya rifts propagation. *Tectonics*, 24(1). <https://doi.org/10.1029/2004TC001680>

Booth, D. C., & Crampin, S. (1985). Shear-wave polarizations on a curved wavefront at an isotropic free surface. *Geophysical Journal of the Royal Astronomical Society*, 83, 31-45.

<https://doi.org/10.1111/j.1365-246X.1985.tb05154.x>

Braddock, M., Biggs, J., Watson, I. M., Hutchinson, W., Pyle, D. M., & Mather, T. A., (2017), Satellite observations of fumarole activity at Aluto volcano Ethiopia: Implications for geothermal monitoring and volcanic hazard, *Journal of Volcanology and Geothermal Research*, 341, 70-83, <https://doi.org/10.1016/j.jvolgeores.2017.05.006>

Buurman, H. and West, M. E., (2010), Seismic precursors to volcanic explosions during the 2006 eruption of Augustine Volcano. In: Power, J.A., Coombs, M.L., and Freymueller, J.T. (eds.), The 2006 eruption of Augustine Volcano. U.S. Geological Survey Professional Paper, 1769, 41–57.

Chouet, B. A. (1996). Long-period volcano seismicity: its source and use in eruption forecasting. *Nature*, 380, 309-316. <https://doi.org/10.1038/380309a0>

Chouet, B. A., & Matoza, R. S. (2013). A multi-decadal view of seismic methods for detecting precursors of magma movement and eruption. *Journal of Volcanology and Geothermal Research*, 252, 108-175.

Collettini, C., & Holdsworth, R. E. (2004). Fault zone weakening and character of slip along low-angle normal faults: insights from the Zuccale fault, Elba, Italy. *Journal of the Geological Society*, 161 (6), 1039-1051, <https://doi.org/10.1144/0016-764903-179>

Cornwell, D. G., Maguire, P. K. H., England, R. W., & Stuart, G. W. (2010). Imaging detailed crustal structure and magmatic intrusion across the Ethiopian Rift using a dense linear broadband array. *Geochemistry Geophysics Geosystems*, 11. <https://doi.org/10.1029/2009GC002637>

- Corti, G., (2009), Continental rift evolution: From rift initiation to incipient break-up in the Main Ethiopian Rift, East Africa, *Earth-Science Reviews*, 96 (1-2), 1-53, <https://doi.org/10.1016/j.earscirev.2009.06.005>
- Corti, G., Philippon, M., Sani, F., Keir, D., & Kidane, T. (2013). Re-orientation of the extension direction and pure extensional faulting at oblique rift margins: comparison between the Main Ethiopian Rift and laboratory experiments. *Terra Nova*, 25(5), 396-404. DOI: [10.1111/ter.12049](https://doi.org/10.1111/ter.12049)
- Corti, G., Sani, F., Agostini, S., Philippon, M., Sokoutis, D. & Willingshofer, E., (2018) Off-axis volcano-tectonic activity during continental rifting: Insights from the transversal Goba-Bonga lineament, Main Ethiopian Rift (East Africa), *Tectonophysics*, 728–729, 75-91, doi: <https://doi.org/10.1016/j.tecto.2018.02.011>.
- Crampin, S., & Booth, D. C. (1985). Shear-wave polarizations near the North Anatolian Fault – II. Interpretation in terms of crack-induced anisotropy. *Geophysical Journal International*, 83(1), 75-92. <https://doi.org/10.1111/j.1365-246X.1985.tb05157.x>
- Daly, E., Keir, D., Ebinger, C., Stuart, G. W., Bastow, I. D., & Ayele, A. (2008). Crustal tomographic imaging of a transitional continental rift: The Ethiopian rift. *Geophysical Journal International*, 172, 1033-1048. <https://doi.org/10.1111/j.1365-246X.2007.03682.x>
- Darling, W. G., Gizaw, B., & Arusei, M. K. (1996). Lake-groundwater relationships and fluid-rock interaction in the East-African Rift Valley: isotopic evidence. *Journal of African Earth Sciences*, 22(4), 423-431. [https://doi.org/10.1016/0899-5362\(96\)00026-7](https://doi.org/10.1016/0899-5362(96)00026-7)
- DeMets, C., Gordon, R. G., & Argus, D. F. (2010). Geologically current plate motions. *Geophysical Journal International*, 181, 1-80. <https://doi.org/10.1111/j.1365-246X.2009.04491.x>
- Di Paola, G. M. (1972). The Ethiopian Rift Valley (between 7° 00' and 8° 40' lat. north). *Bulletin Volcanologique*, 36(4), 517-560. <https://doi.org/10.1007/BF02599823>

Drew, J., White, R. S., Tilmann, F., & Tarasewicz, J. (2013). Coalescence microseismic mapping.

Geophysical Journal International, 195, 1773-1785. <https://doi.org/10.1093/gji/ggt331>

Ebinger, C. J., & Casey, M. (2001). Continental breakup in magmatic provinces: An Ethiopian

example. *Geology*, 29 (6), 527-530. [https://doi.org/10.1130/0091-](https://doi.org/10.1130/0091-7613(2001)029%3C0527:CBIMPA%3E2.0.CO;2)

[7613\(2001\)029%3C0527:CBIMPA%3E2.0.CO;2](https://doi.org/10.1130/0091-7613(2001)029%3C0527:CBIMPA%3E2.0.CO;2)

El-Isa, Z. H., & Eaton, D. W. (2014). Spatiotemporal variations in the b-value of earthquake

magnitude-frequency distributions: Classification and causes. *Tectonophysics*, 615-616, 1-

11. <https://doi.org/10.1016/j.tecto.2013.12.001>

Farrell, J., Husen, S., & Smith, R. B. (2009). Earthquake swarm and b-value characterization of the

Yellowstone volcano-tectonic system. *Journal of Volcanology and Geothermal Research*,

188, 260-276. <https://doi.org/10.1016/j.jvolgeores.2009.08.008>

Font, Y., Kao, H., Lallemand, S., Liu, C.-S. and Chiao, L.-Y., 2004. Hypocentral determination offshore

Eastern Taiwan using the Maximum Intersection method. *Geophysical Journal*

International, 158, 655-675 <https://doi.org/10.1111/j.1365-246X.2004.02317.x>

Fontijn, K., McNamara, K., Tadesse, A. Z., Pyle, D. M., Dessalegn, F., Hutchinson, W., Mather, T. A. &

Yirgu, G. (2018), Contrasting styles of post-caldera volcanism along the Main Ethiopian Rift:

Implications for contemporary volcanic hazards, *Journal of Volcanology and Geothermal*

Research, 356, 90-113, <https://doi.org/10.1016/j.jvolgeores.2018.02.001>

Gíslason, G., Eysteinnsson, H., Björnsson, G. & Haradóttir, V. (2015). *Results of surface exploration in*

the Corbetti Geothermal Area, Ethiopia, Paper presented at World Geothermal Congress,

Melbourne, Australia, 19-25 April 2015

Global Volcanism Program, 2013. *Volcanoes of the World*, v. 4.7.2. Venzke, E (ed.). Smithsonian

Institution. Downloaded 14 Aug 2018. <https://doi.org/10.5479/si.GVP.VOTW4-2013>

- Greenfield, T., & White, R. S. (2015). Building Icelandic igneous crust by repeated melt injections. *Journal of Geophysical Research*, 120, 1-14. <https://doi.org/10.1002/2015JB012009>
- Greenfield, T., White, R. S., & Roecker, S. (2016). The magmatic plumbing system of the Askja central volcano, Iceland, as imaged by seismic tomography. *Journal of Geophysical Research: Solid Earth*, 121. <https://doi.org/10.1002/2016JB013163>
- Gouin, P. (1979), Earthquake History of Ethiopia and the Horn of Africa, 1st ed. Ottawa, Ontario, Canada, International development Research Centre
- Hammond, J. O. S., Kendall, J. M., Wookey, J., Stuart, G. W., Keir, D., & Ayele, A. (2014). Differentiating flow, melt, or fossil seismic anisotropy beneath Ethiopia. *Geochemistry, Geophysics, Geosystems*, 15(5), 1878-1894. <https://doi.org/10.1002/2013GC005185>
- Hill, D. P., Bailey, R. A., & Ryall, A. S. (1985). Active tectonic and magmatic processes beneath Long Valley Caldera, eastern California: An overview. *Journal of Geophysical Research: Solid Earth*, 90(B13), 11111-11120. <https://doi.org/10.1029/JB090iB13p11111>
- Holtzman Benjamin, K., & Kendall, J. M. (2010). Organized melt, seismic anisotropy, and plate boundary lubrication. *Geochemistry, Geophysics, Geosystems*, 11(12). <https://doi.org/10.1029/2010GC003296>
- Hutchison, W., Biggs, J., Mather, T. A., Pyle, D. M., Lewi, E., Yirgu, G., et al. (2016). Causes of unrest at silicic calderas in the East African Rift: New constraints from InSAR and soil-gas chemistry at Aluto volcano, Ethiopia. *Geochemistry Geophysics Geosystems*, 17, 3008-3030, doi:10.1002/2016GC006395
- Hutchison, W., Fusillo, R., Pyle, D. M., Mather, T. A., Blundy, J. D., Biggs, J., Yirgu, G., Cohen, B. E., Brooker, R. A. Barfod, D. N. & Calvert, A. T. (2016). A pulse of mid-Pleistocene rift volcanism in Ethiopia at the dawn of modern humans. *Nature Communications*, 7, 13192. <https://doi.org/10.1038/ncomms13192>

Keir, D., Belachew, M., Ebinger, C., Kendall, J.-M., Hammond, J. O. S., Stuart, G. W., Ayele, A. & Rowland J. V. (2011). Mapping the evolving strain field during continental breakup from crustal anisotropy in the Afar Depression. *Nature communications*, 2, 285.

<https://doi.org/10.1038/ncomms1287>

Keir, D., Bastow, I. D., Corti, G., Mazzarini, F. & Rooney, T. O. (2015) The origin of along rift variations in faulting and magmatism in the Ethiopian Rift. *Tectonics*. 34, 467-477.

doi: 10.1002/2014TC003698

Keir, D., Ebinger, C. J., Stuart, G. W., Daly, E., & Ayele, A. (2006a). Strain accommodation by magmatism and faulting as rifting proceeds to breakup: Seismicity of the northern Ethiopian rift. *Journal of Geophysical Research: Solid Earth*, 111(B5).

<https://doi.org/10.1029/2005JB003748>

Keir, D., Kendall, J.-M., Ebinger, C., & Stuart, G. W. (2005). Variations in late syn-rift melt alignment inferred from shear-wave splitting in crustal earthquakes beneath the Ethiopian rift.

Geophysical Research Letters, 32, 12-15. <https://doi.org/10.1029/2005GL024150>

Keir, D., Stuart, G. W., Jackson, A., & Ayele, A. (2006b). Local earthquake magnitude scale and seismicity rate for the Ethiopian rift. *Bulletin of the Seismological Society of America*, 96,

2221-2230. <https://doi.org/10.1785/0120060051>

Kendall, J. M., Pilidou, S., Keir, D., Bastow, I. D., Stuart, G. W., & Ayele, A. (2006). Mantle upwellings, melt migration and the rifting of Africa: insights from seismic anisotropy. *Geological Society,*

London, Special Publications, 259(1), 55. 10.1144/GSL.SP.2006.259.01.06.

<http://sp.lyellcollection.org/content/259/1/55.abstract>

Keranen, K, Klemperer, S. L., Gloaguen, R. & the EAGLE Working Group (2004). Three dimensional seismic imaging of a protoridge axis in the Main Ethiopian rift, *Geology*, 32 (11), 949-952,

<https://doi.org/10.1130/G20737.1>

Kissling, E. (1988). Geotomography with local earthquake data. *Reviews of Geophysics*, 26, 659-698.

<https://doi.org/10.1029/RG026i004p00659>

Koyanagi, R. Y., Chouet, B., & Aki, K. (1987). Origin of Volcanic Tremor in Hawaii: Part I. Data from the Hawaiian Volcano Observatory 1969-1985. In R. W. Decker, T. L. Wright, & P. H. Stauffer (Eds.), *Volcanism in Hawaii* (pp. 1221-1257): U. S. Geological Survey Professional Paper 1350.

Lloyd, R., Biggs, J., Wilks, M., Nowacki, A., Kendall, J. M., Ayele, A., et al. (2018a). Evidence for cross rift structural controls on deformation and seismicity at a continental rift caldera. *Earth and Planetary Science Letters*, 487, 190-200, <https://doi.org/10.1016/j.epsl.2018.01.037>

Lloyd, R., Biggs, J., Birhanu, Y., Wilks, M., Gottsmann, J., Kendall, J-M., Ayele, A., Lewi, E. & Eysteinnsson, H. (2018b), Sustained Uplift at a Continental Rift Caldera, *Journal of Geophysical Research: Solid Earth*, 123, 5209-5226, <https://doi.org/10.1029/2018JB015711>

Lomax, A., A. Michelini, A. Curtis, 2009. Earthquake Location, Direct, Global-Search Methods, in *Complexity In Encyclopedia of Complexity and System Science*, Part 5, Springer, New York, pp. 2449-2473, doi:10.1007/978-0-387-30440-3. (www.springerlink.com)

Maguire, P. K. H., Keller, G. R., Klemperer, S. L., MacKenzie, G. D., Keranen, K., Harder, S., O'Reilly, B., Thybo, H., Asfaw, L., Khan, M. A. & Amha, M., (2006). Crustal structure of the northern Main Ethiopian Rift from the EAGLE controlled-source survey; a snapshot of incipient lithospheric break-up. In: *Afar Volcanic Province within the East African Rift System*, 259, 269-292. <https://doi.org/10.1144/GSL.SP.2006.259.01.21>

Mainprice, D., Barruol, G., & Ismaï, L. W. B. (2013). The Seismic Anisotropy of the Earth's Mantle: from Single Crystal to Polycrystal. *Earth's Deep Interior: Mineral Physics and Tomography From the Atomic to the Global Scale*. <https://doi.org/10.1029/GM117p0237>

- McNutt, S. R. (2005). Volcanic Seismology. *Annual Review of Earth and Planetary Sciences*, 33, 461-491. <https://doi.org/10.1146/annurev.earth.33.092203.122459>
- Nakamichi, H., Hamaguchi, H., Tanaka, S., Ueki, S., Nishimura, T., & Hasegawa, A. (2003). Source mechanisms of deep and intermediate-depth low-frequency earthquakes beneath Iwate volcano, northeastern Japan. *Geophysical Journal International*, 154(3), 811-828. <https://doi.org/10.1046/j.1365-246X.2003.01991.x>
- Neuberg, J., Luckett, R., Baptie, B., & Olsen, K. (2000). Models of tremor and low-frequency earthquake swarms on Montserrat. *Journal of Volcanology and Geothermal Research*, 101(1-2), 83-104. [https://doi.org/10.1016/S0377-0273\(00\)00169-4](https://doi.org/10.1016/S0377-0273(00)00169-4)
- Neuberg, J. W., Tuffen, H., Collier, L., Green, D., Powell, T., & Dingwell, D. (2006). The trigger mechanism of low-frequency earthquakes on Montserrat. *Journal of Volcanology and Geothermal Research*, 153(1), 37-50. <https://doi.org/10.1016/j.jvolgeores.2005.08.008>
- Nowacki, A. S., Wilks, M., Kendall, J. M., Biggs, J., & Ayele, A. (2018). Characterising hydrothermal fluid pathways beneath Aluto volcano, Main Ethiopian Rift, using shear wave splitting. *Geochemistry Geophysics Geosystems*. <https://doi.org/10.1016/j.jvolgeores.2018.03.023>
- Peng, Z., & Gomberg, J. (2010). An integrated perspective of the continuum between earthquakes and slow-slip phenomena. *Nature Geoscience*, 3(9), 599. <https://doi.org/10.1038/ngeo940>
- Peterson, J. (1993). Observations and modeling of seismic background noise. *USGS Open-File report* 93-322, <https://doi.org/10.3133/ofr93322>
- Pizzi, A., Coltorti, M., Abebe, B., Disperati, L., Sacchi, G., & Salvini, R. (2006). The Wonji fault belt (Main Ethiopian Rift): structural and geomorphological constraints and GPS monitoring. *Afar Volcanic Province within the East African Rift System*, 259, 191, <https://doi.org/10.1144/GSL.SP.2006.259.01.16>

- Prieto, G. A., Parker, R. L., & Vernon III, F. L. (2009). A Fortran 90 library for multitaper spectrum analysis. *Computers & Geosciences*, 35(8), 1701-1710.
<https://doi.org/10.1016/j.cageo.2008.06.007>
- Pugh, D. J., White, R. S., & Christie, P. A. F. (2016). A Bayesian method for microseismic source inversion. *Geophysical Journal International*, 206(2), 1009-1038.
<https://doi.org/10.1093/gji/ggw186>
- Pugh, D. J. & White, R. S. (2018), MTfit: A Bayesian Approach to Seismic Moment Tensor Inversion, *Seismological Research Letters*, 89 (4), doi: 10.1785/0220170273
- Robertson, E. A. M., Biggs, J., Cashman, K. V., Floyd, M. A., & Vye-Brown, C. (2016). Influence of regional tectonics and pre-existing structures on the formation of elliptical calderas in the Kenyan Rift. In: Wright, T. J., Ayele, A., Ferguson, D. J., Kidane, T. & Vye-Brown, C. (eds), *Magmatic Rifting and Active Volcanism*, Geological Society, London, Special Publications, 420, 43-67, <http://doi.org/10.1144/SP420.12>
- Samrock, F., Kuvshinov, A., Bakker, J., Jackson, A., & Fisseha, S. (2015). 3-D analysis and interpretation of magnetotelluric data from the Aluto-Langano geothermal field, Ethiopia. *Geophysical Journal International*, 202(3), 1923-1948. <https://doi.org/10.1093/gji/ggv270>
- Savage, M. K., Wessel, A., Teanby, N. A., & Hurst, A. W. (2010). Automatic measurement of shear wave splitting and applications to time varying anisotropy at Mount Ruapehu volcano, New Zealand. *Journal of Geophysical Research*, 115(B12). doi: 10.1029/2010JB007722
- Shelly, D. R., Moran, S. C., & Thelen, W. a. (2013). Evidence for fluid-triggered slip in the 2009 Mount Rainier, Washington earthquake swarm. *Geophysical Research Letters*, 40, 1506-1512. <https://doi.org/10.1002/grl.50354>
- Sholtz, C. (1968). Microfracturing and the inelastic deformation of rock in compression. *Journal of Geophysical Research*, 73, 1417-1432. <https://doi.org/10.1029/JB073i004p01417>

Silver, P. G., & Chan, W. W. (1991). Shear Wave Splitting and Subcontinental Mantle Deformation.

Journal of Geophysical Research, 96, 16429-16454. <https://doi.org/10.1029/91JB00899>

Teanby, N. A., Kendall, J. M., & van der Baan, M. (2004). Automation of Shear-Wave Splitting

Measurements using Cluster Analysis. *Bulletin of the Seismological Society of America*, 94(2), 453-463. <https://doi.org/10.1785/0120030123>

Teklemariam, M., Battaglia, S., Gianelli, G., & Ruggieri, G. (1996). Hydrothermal alteration in the

Aluto-Langano geothermal field, Ethiopia. *Geothermics*, 25(6), 679-702.

[https://doi.org/10.1016/S0375-6505\(96\)00019-3](https://doi.org/10.1016/S0375-6505(96)00019-3)

Thomas, C., & Kendall, J-M. (2002). The lowermost mantle beneath northern Asia - II. Evidence fro

lower mantle anisotropy. *Geophysical Journal International*, 151, 296-308.

<https://doi.org/10.1046/j.1365-246X.2002.01760.x>

Valcke, S. L. A., Casey, M., Lloyd, G. E., Kendall, J. M., & Fisher, Q. J. (2006). Lattice preferred

orientation and seismic anisotropy in sedimentary rocks. *Geophysical Journal International*, 166(2), 652-666. <https://doi.org/10.1111/j.1365-246X.2006.02987.x>

Wadati, K. (1933). On the travel time of earthquake waves. *Geophys. Mag.*, 7, 101-111.

Wadge, G., Biggs, J., Lloyd, R., & Kendall, J. M. (2016). Historical Volcanism and the State of Stress in the East African Rift System. *Frontiers in Earth Science*, 4.

<https://doi.org/10.3389/feart.2016.00086>

Wessel, P., Smith, W. H. F., Scharroo, R., Luis, J., & Wobbe, F. (2013). Generic Mapping Tools:

Improved Version Released. *Eos, Transactions American Geophysical Union*, 94, 409-410.

<https://doi.org/10.1002/2013EO450001>

Wilks, M. (2016), A Seismological Investigation into Tectonic, Magmatic and Hydrothermal

Processes at Aluto and Corbetti, Two Restless Volcanoes in the Main Ethiopian Rift, *PhD*

Thesis, University of Bristol, UK

Wilks, M., Kendall, J. M., Nowacki, A., Biggs, J., Wookey, J., Birhanu, Y., et al. (2017). Seismicity associated with magmatism, faulting and hydrothermal circulation at Aluto Volcano, Main Ethiopian Rift. *Journal of Volcanology and Geothermal Research*, 340, 52-67.

<https://doi.org/10.1016/j.jvolgeores.2017.04.003>

Woldegabriel, G., Aronson, J. L., & Walter, R. C. (1990). Geology, geochronology, and rift basin development in the central sector of the Main Ethiopia Rift. *Geological Society of America Bulletin*, 102(4), 439-458. [https://doi.org/10.1130/0016-](https://doi.org/10.1130/0016-7606(1990)102%3C0439:GGARBD%3E2.3.CO;2)

[7606\(1990\)102%3C0439:GGARBD%3E2.3.CO;2](https://doi.org/10.1130/0016-7606(1990)102%3C0439:GGARBD%3E2.3.CO;2)

Wolfenden, E., Ebinger, C., Yirgu, G., Deino, A., & Ayalew, D. (2004). Evolution of the northern Main Ethiopian rift: birth of a triple junction. *Earth and Planetary Science Letters*, 224(1-2), 213-228. <https://doi.org/10.1016/j.epsl.2004.04.022>

Wyss, M. (1973). Towards a Physical Understanding of the Earthquake Frequency Distribution. *Geophysical Journal International*, 31, 341-359. <https://doi.org/10.1111/j.1365-246X.1973.tb06506.x>

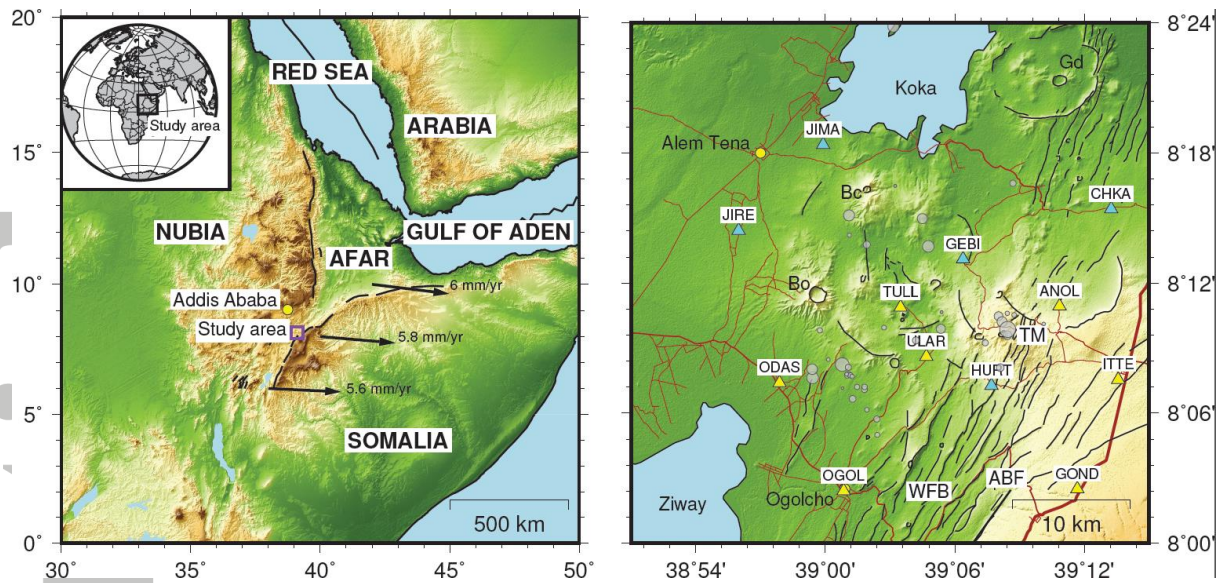


Figure 1. Location of the study area. Left panel shows the regional tectonics of the Afar Triple Junction and the location of the study area (purple box). Border faults are delineated by the thick black lines and full spreading rates between Nubia and Somalia are indicated by the arrows (DeMets et al., 2010). The location of Addis Ababa, the capital of Ethiopia, is indicated by the yellow circle. The inset map shows the location of Ethiopia. Right panel shows the area around the Bora – Tullu-Moye volcanic region. The volcanoes Gedemsa (Gd), Bora (Bo), Bericcia (Bc) and Tullu-Moye (TM) are indicated. The locations of the major towns, Alem Tena and Olgolcho are indicated by the yellow circles and labelled. Roads and tracks are delineated by brown lines. The lakes Ziway and Koka are labelled. Faults and fractures are delineated by black lines and the location of the Wonji Fault Belt (WFB) and the Assela Border Fault (ABF) are labelled. The location and names of seismic stations deployed for the entire deployment period (Feb 2016 – Oct 2017) are indicated by labelled yellow triangles, additional stations deployed in Feb 2017 are indicated by the cyan triangles. Earthquakes detected and located by *Keir et al.* (2006a) are colored gray and scaled by magnitude.

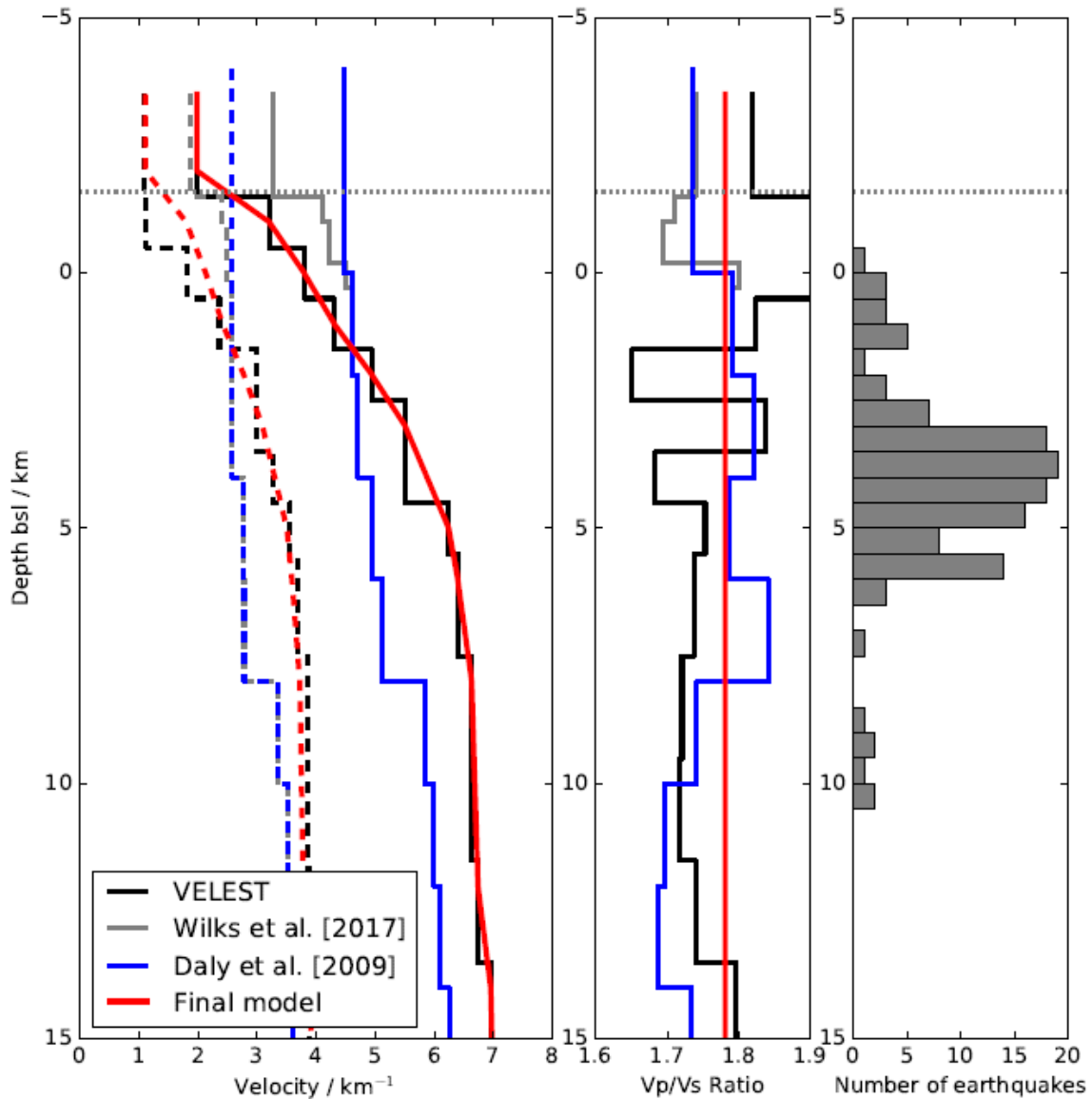


Figure 2. Comparison between 1D velocity models previously calculated for regions in Ethiopia and this study. Left panel shows the P-wave (solid lines) and S-wave (dashed lines) velocity models from *Wilks et al. (2017)* (gray) and *Daly et al. (2008)* (blue). The 1D velocity model as output from modelling using VELEST is colored black. The final velocity model used in this study is colored red. The approximate depth of the surface is indicated by the gray, dotted line. The middle panel shows the ratio between the P-wave velocity (V_p) and the S-wave velocity (V_s) colored as the left panel. The right panel shows the depth distribution of earthquakes used during the inversion of the final 1D model with VELEST.

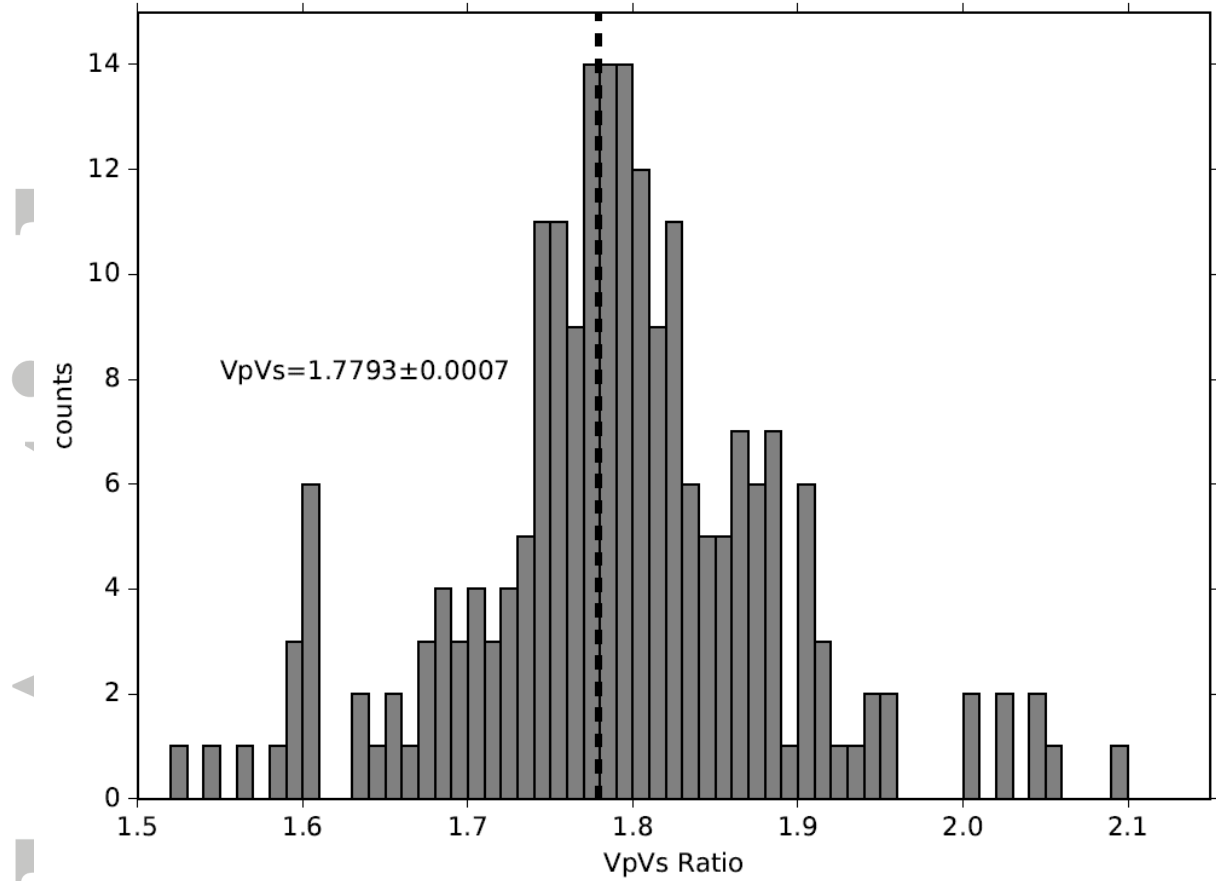


Figure 3. Histogram of Vp/Vs ratios calculated using Wadati plots (Wadati, 1933) for earthquakes with more than 4 P and S wave travel time picks. The mean value of 1.7793 ± 0.0007 (standard error of the mean) is indicated by the black dashed line.

Accepted

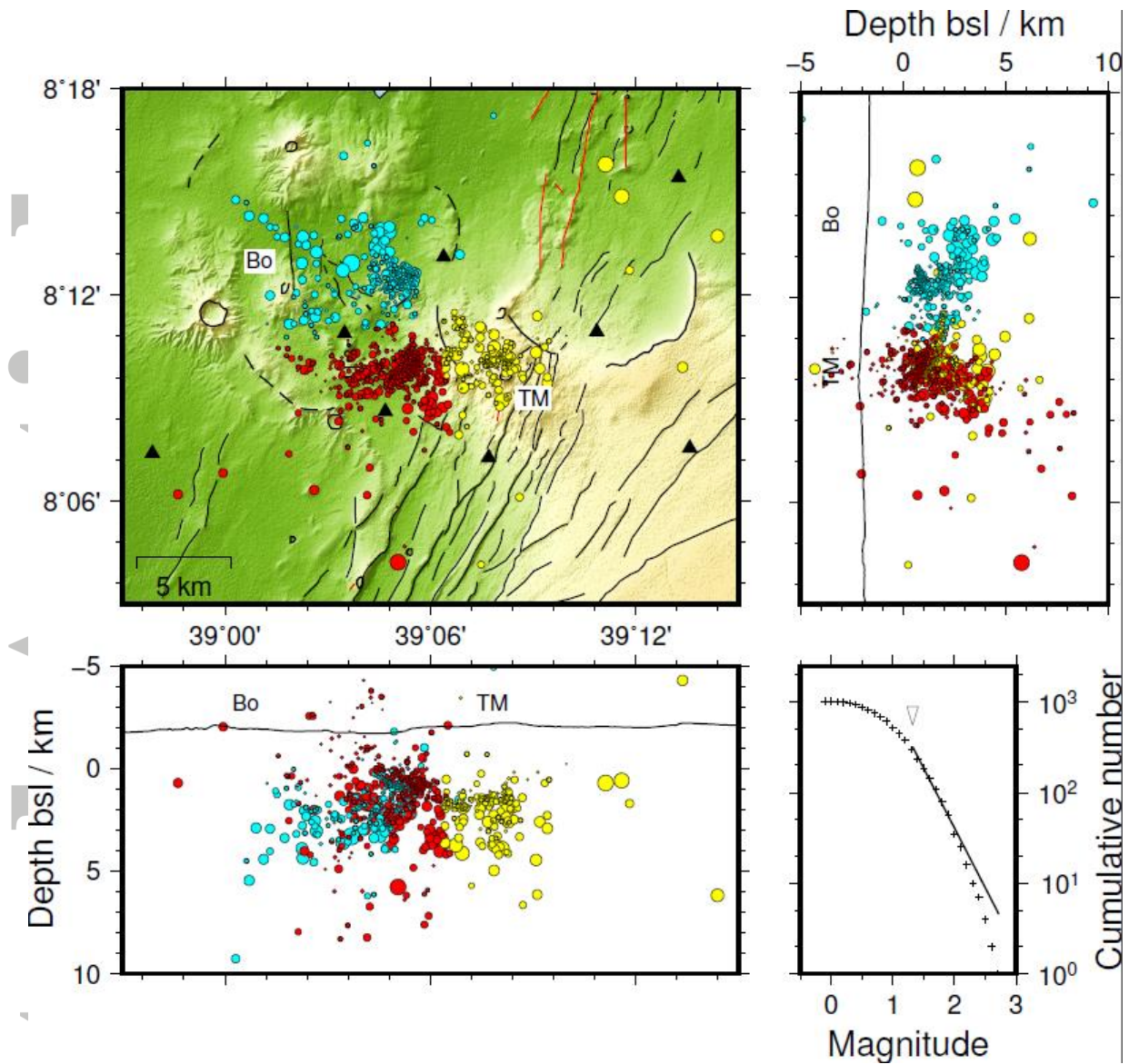


Figure 4. Detected earthquakes around the Bora - Tullu-Moye volcanic complex located using NonLinLoc. Earthquake hypocenters are indicated by the circles, scaled by calculated magnitude and colored by cluster location (see text for details). Panels show: map view (top-left panel), longitude vs depth cross-section (lower-left panel) and latitude vs depth cross-section (upper-right panel). Black and red lines delineate faults and identified eruptive fissures respectively. The cumulative magnitude distribution is shown in the lower-right panel. The magnitude of completion is indicated by the triangle and the bold line delineates the best-fit to the data used to calculate the Gutenberg-Richter b-value.

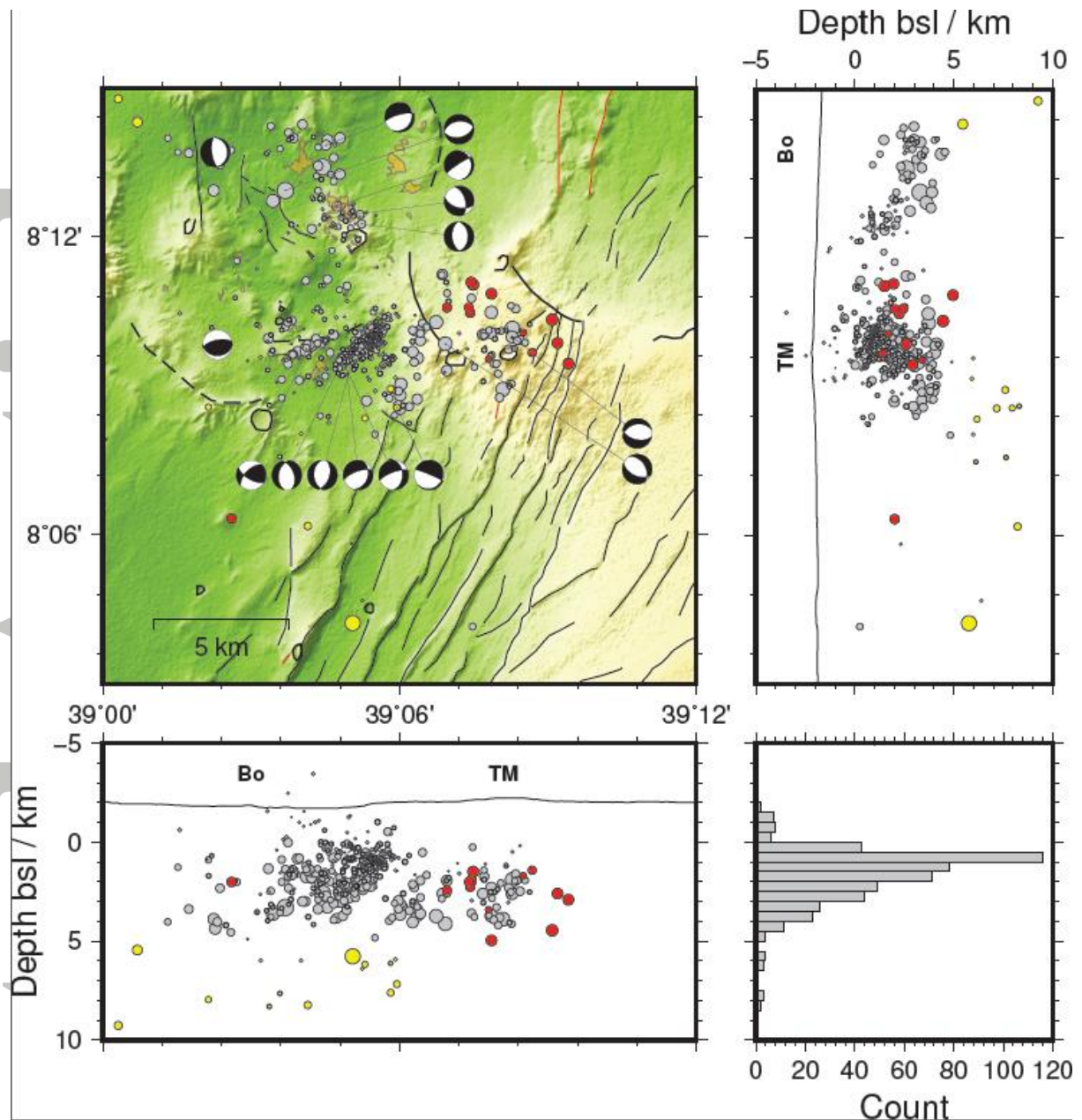


Figure 5. Well located earthquakes (see text for details of filtering parameters). Earthquakes are displayed in map view in the upper-left panel and in longitude (bottom-left panel) and latitude (top-right panel) cross-sections. A histogram of earthquakes binned by their hypocentral depth is displayed in the bottom-right panel. Earthquakes deeper than 5 km bsl are colored yellow and earthquakes with Frequency Indexes of less than 0 are colored red. The remaining earthquakes (depths shallower than 5 km and not low-frequency) are colored gray. The location of earthquakes with well constrained focal mechanisms are indicated by beachballs in the upper-left panel. Regions with altered soil, indicating hydrothermally active areas are colored orange.

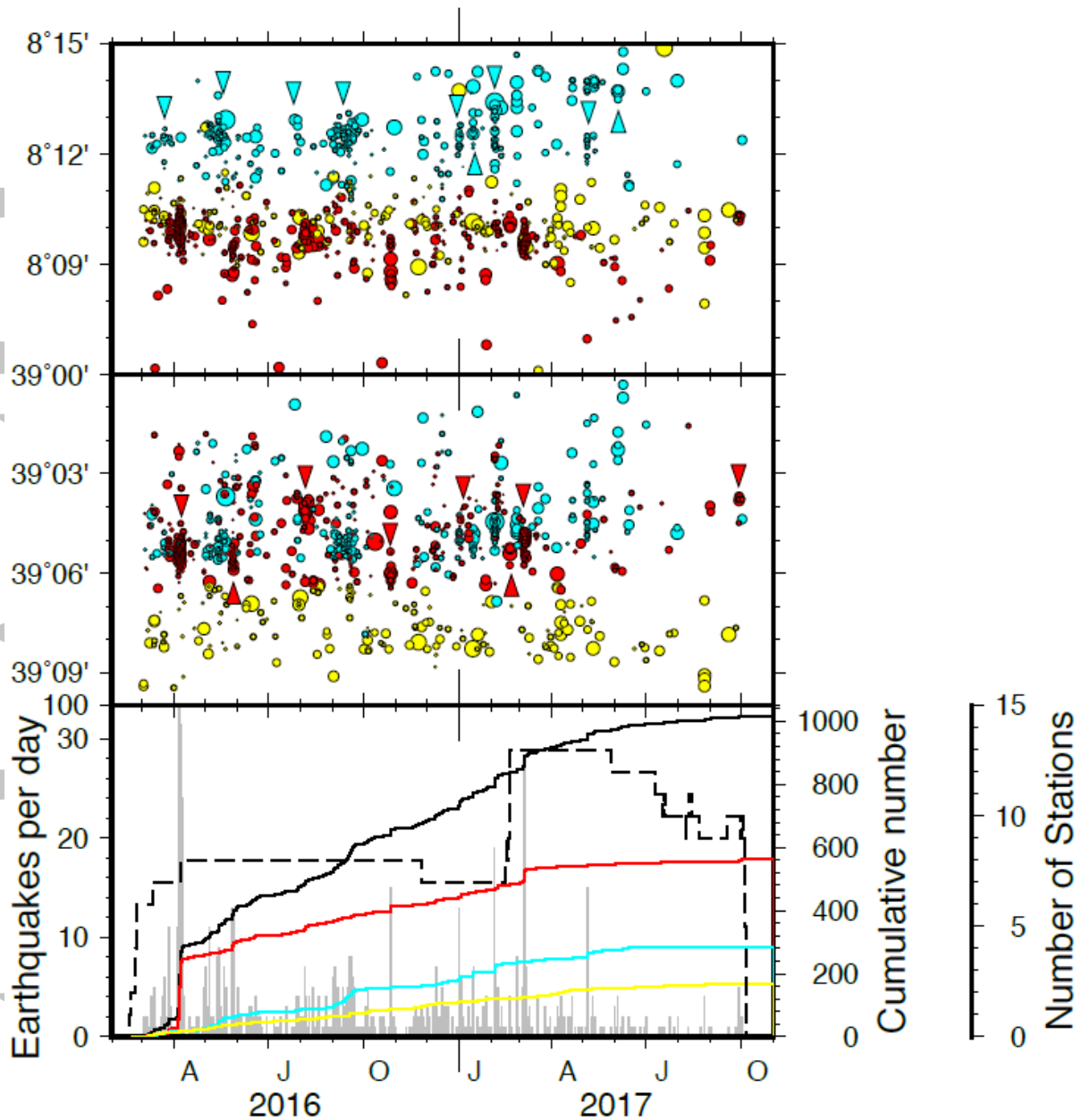


Figure 6. Timeseries of earthquakes detected and located around the Bora – Tullu-Moye volcanic complex. The upper and middle panel display the origin time of each earthquake against its latitude and longitude respectively. Earthquakes are scaled by the magnitude and colored by cluster as Figure 4. Colored triangles indicate the timing of identified swarms. Note that the latitude and longitude scales in the upper two panels are different to Figure 4 to emphasize earthquake swarms. Lower panel shows both the number of detected earthquakes per day (gray boxes), the cumulative number of earthquakes (black line) and the number of active stations per day (dashed line). The colored lines display the cumulative number in each cluster respectively. Note the change of scale in the y-axis in the lower panel to display the large number of earthquakes detected near the start of April 2016.

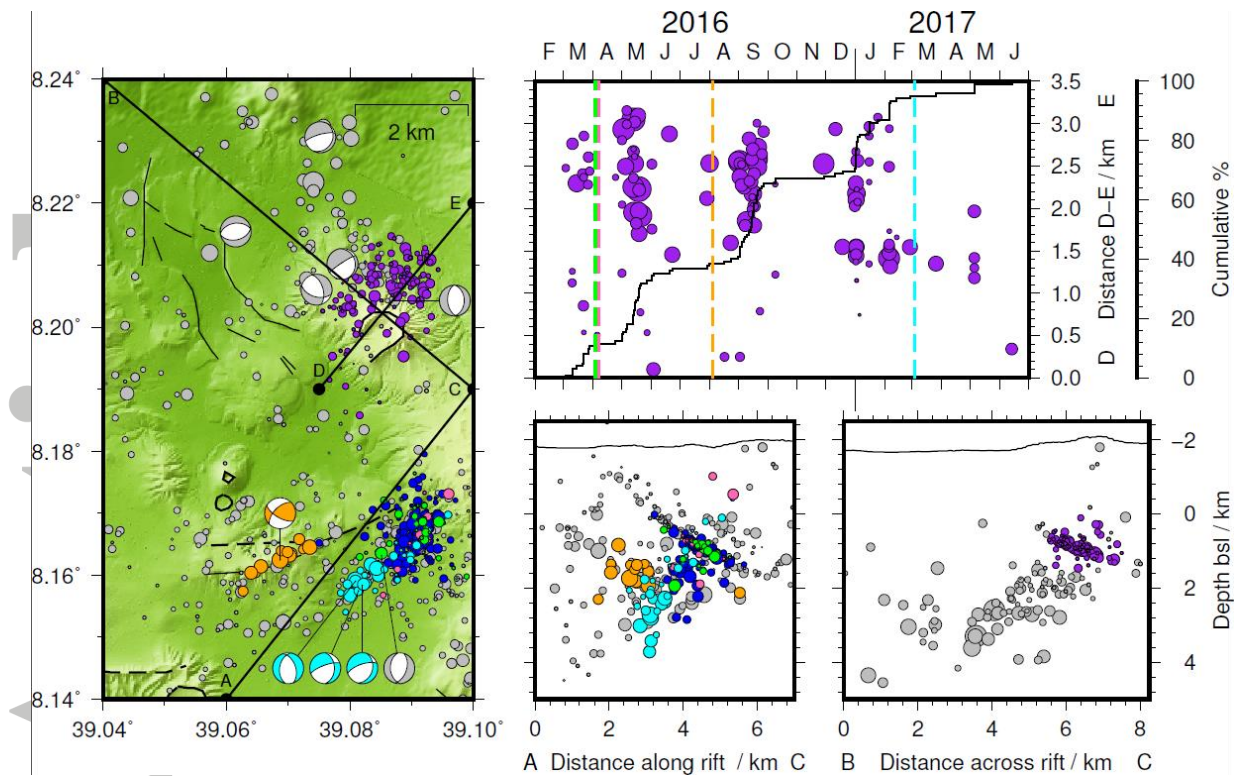


Figure 7. A zoomed view of earthquakes located between Bora and Tullu-Moye. Earthquakes and focal mechanisms within swarms during August 2016 and April 2017 are colored orange and light-blue respectively. Earthquakes which occur within a number of swarms during April 2016 are colored dark-blue, green and pink respectively. Earthquakes which occur within the cluster highlighted in the upper right panel are colored purple in all plots. All other detected earthquakes are colored gray and all earthquakes are scaled by their magnitude. Regions with altered soil, indicating hydrothermally active areas are colored orange. Lower right Panels show earthquakes located within 1.5 km of line A-C (left) and B-C (right) respectively as cross-sections. The upper right panel shows the timeseries of earthquakes within the purple highlighted cluster along the line D-E. The timing of highlighted swarms is indicated by the vertical, colored lines in the upper-right panel.

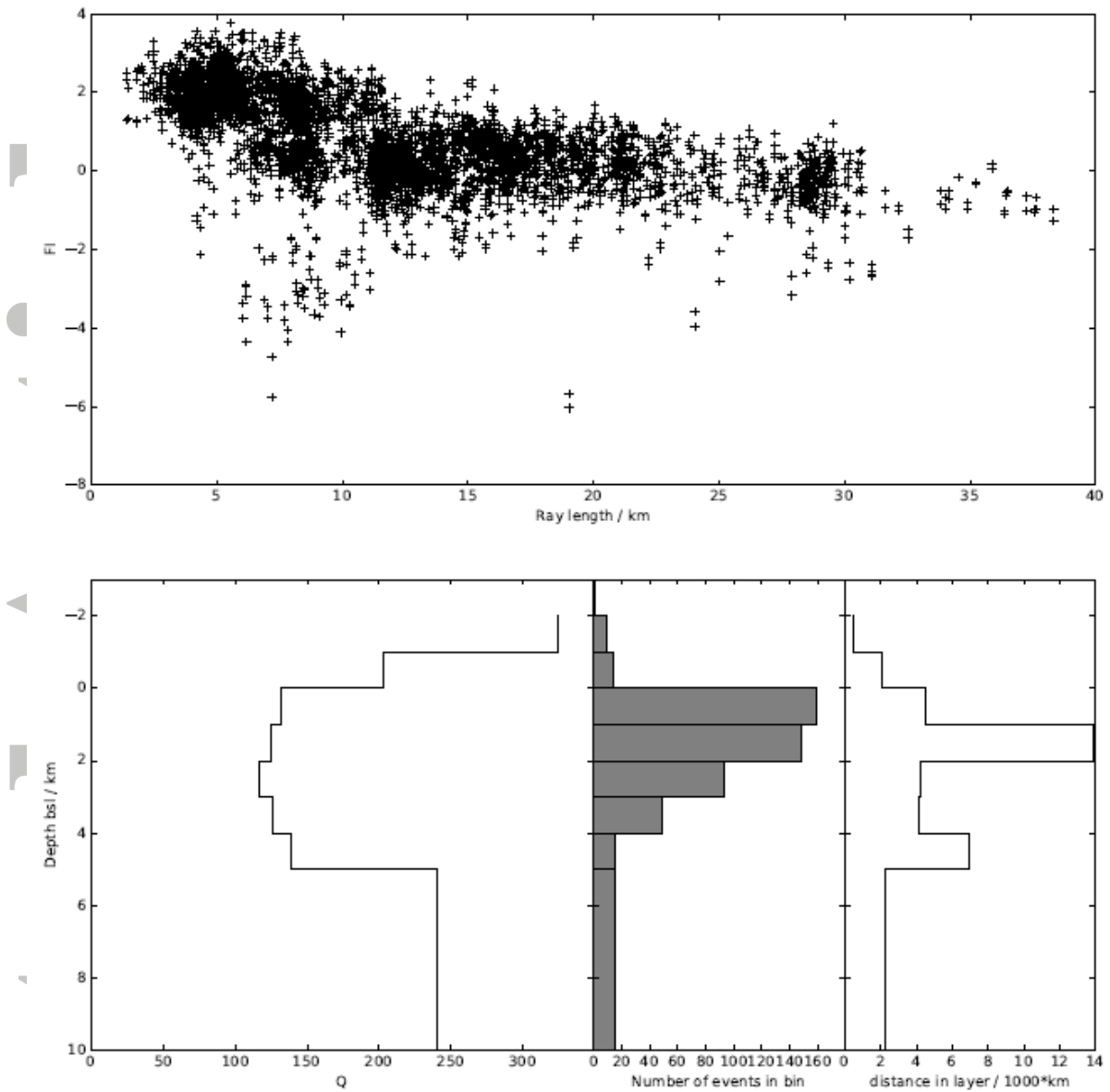


Figure 8. Frequency Index (FI) measurements and attenuation modelling. Top panel displays the calculated FI from each station and every detected event against the length of the ray. Lower panels show the inverted 1D Q model (lower-left panel), number of earthquakes in each depth bin (lower-middle panel) and the total distance of raypaths in each layer (lower-right panel)

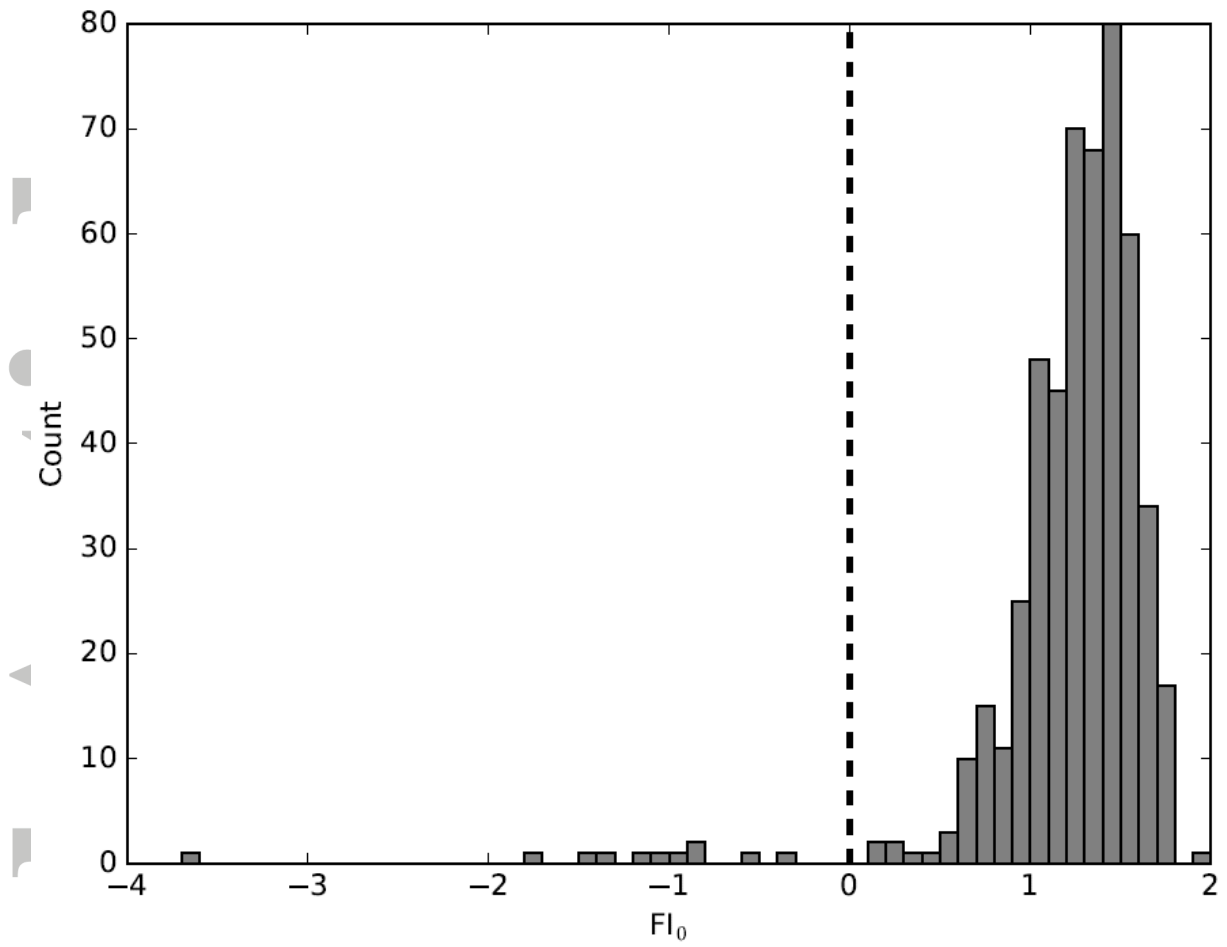


Figure 9. Histogram of corrected FI values for each recorded event. The black line indicates the boundary between LF ($FI < 0$) and VT ($FI > 0$).

Accept

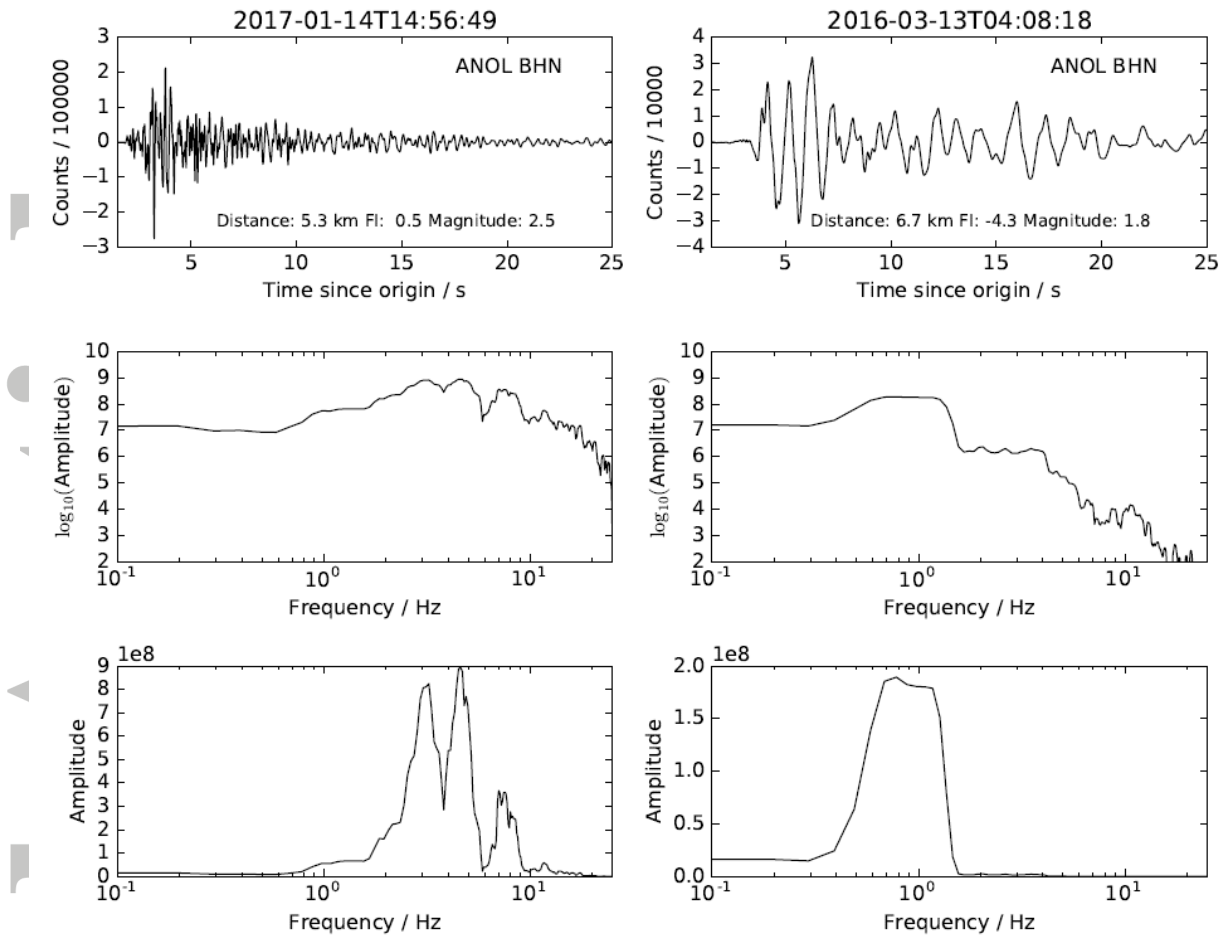


Figure 10. Examples of a VT (left panels) and LF (right panels) events. Top panels show waveforms recorded on the North-component at station ANOL (see Figure 1 for location). The amplitude spectra plotted on a log-log plot and log-linear plot are displayed in the middle and bottom panels respectively.

Accoote

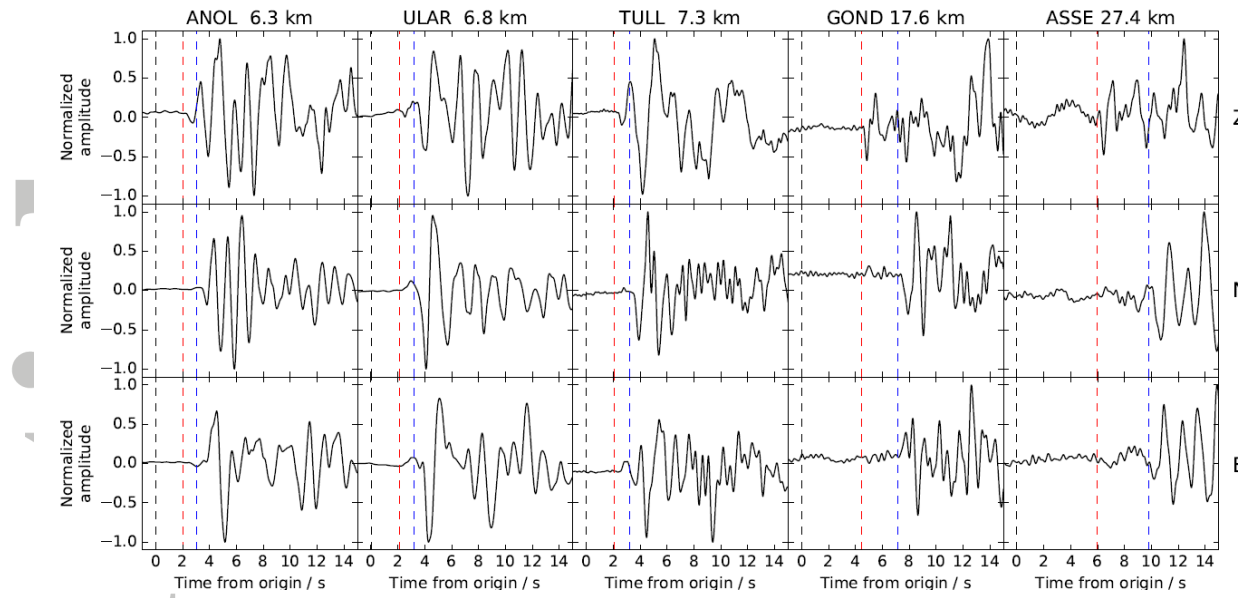


Figure 11. Waveforms recorded at stations across the network of a low-frequency event. Z, N and E components are shown in the top, middle and bottom row respectively. P- and S-wave arrival time picks are indicated by the red and blue dashed lines respectively. Black dashed lines indicate the origin time of the event. The epicentral distance of each station is shown above each column.

Accepted Article

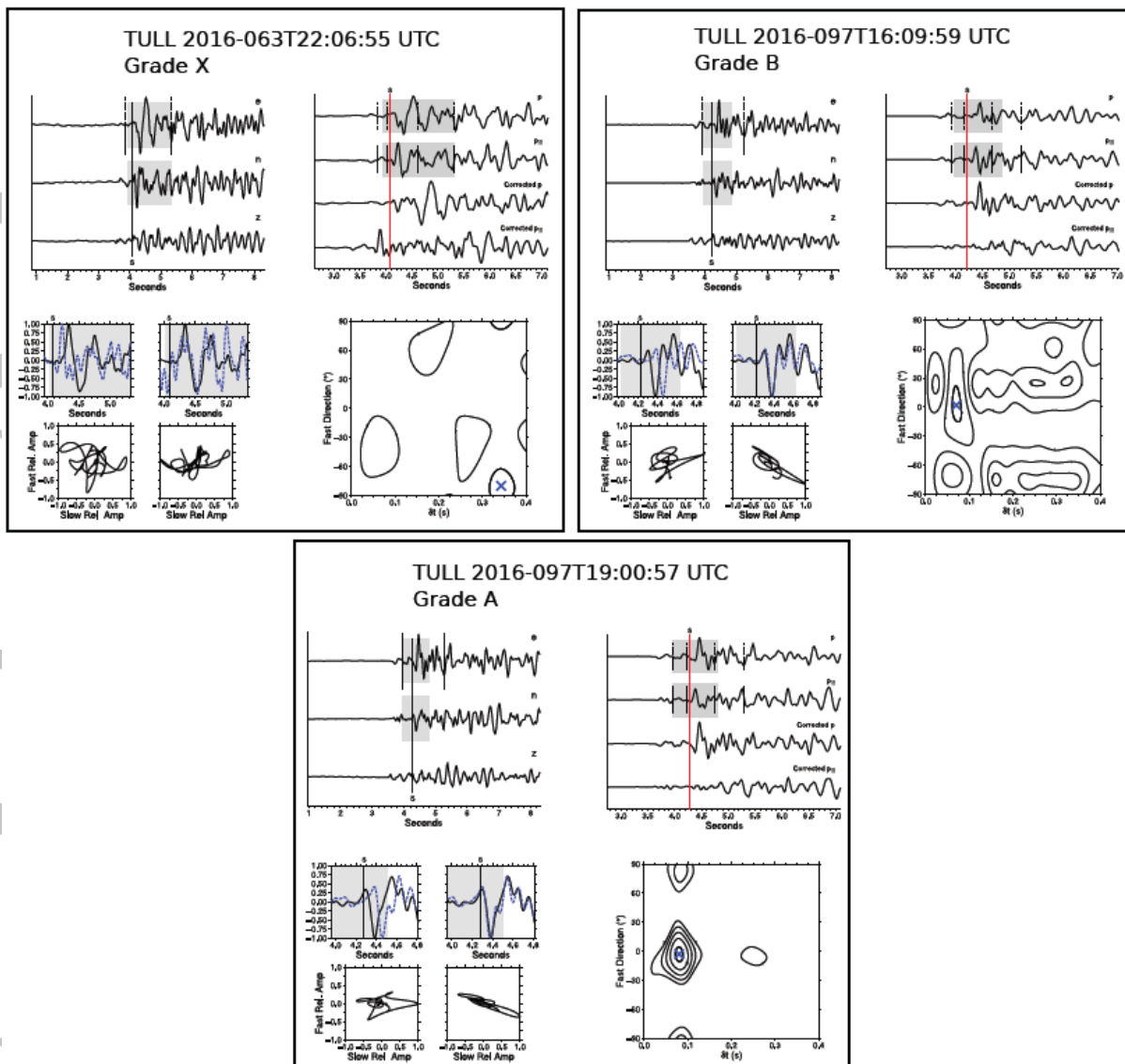


Figure 12. Example SWS measurements results for measurements graded X (upper-left panel), B (upper-right panel) and A (lower-panel). In each panel the upper-left plot shows the filtered waveforms recorded on the east (e), north (n) and vertical (z) components. The S-wave arrival time pick is indicated by the thick black line and the window used is shown by the gray box. In the upper-right plot the upper two waveforms show the two horizontal components rotated into the incoming polarization direction (p) and its perpendicular value (p⊥). The lower two waveforms show the horizontal components rotated into the same reference frame but after correction by δt . The lower-left plot shows the two rotated horizontal components (upper plots) within the final window chosen and the particle motion (lower plots). Before (left) and after (right) correction is displayed. In the lower-right plot the contours of the smallest eigenvalue of the covariance matrix are shown with the final chosen SWS measurement indicated by the blue cross.

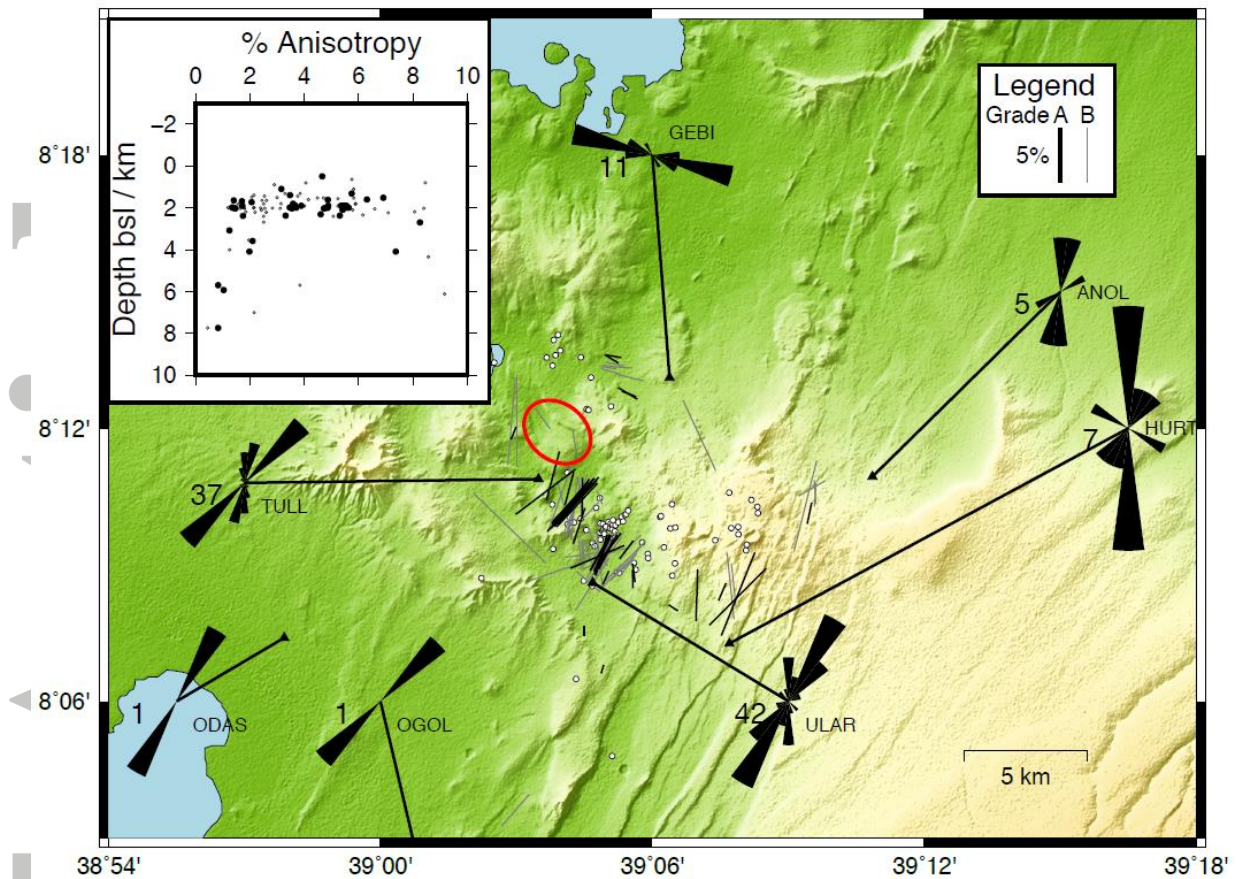


Figure 13. Map of SWS observations made around Bora – Tullu-Moye. Lines indicate fast direction orientations graded A (black) and B (gray), scaled by % anisotropy and plotted at the midpoint of their associated raypath. The red oval highlights observations recorded at the station TULL with a significantly different fast direction. The rose plots show distribution of fast directions recorded at each station and the number of observations. Note that the station OGOL is located off the bottom of the map. The earthquakes which are used are indicated by the white circles. Inset shows the % anisotropy for every grade A (black circles) and B (white circles) against depth.

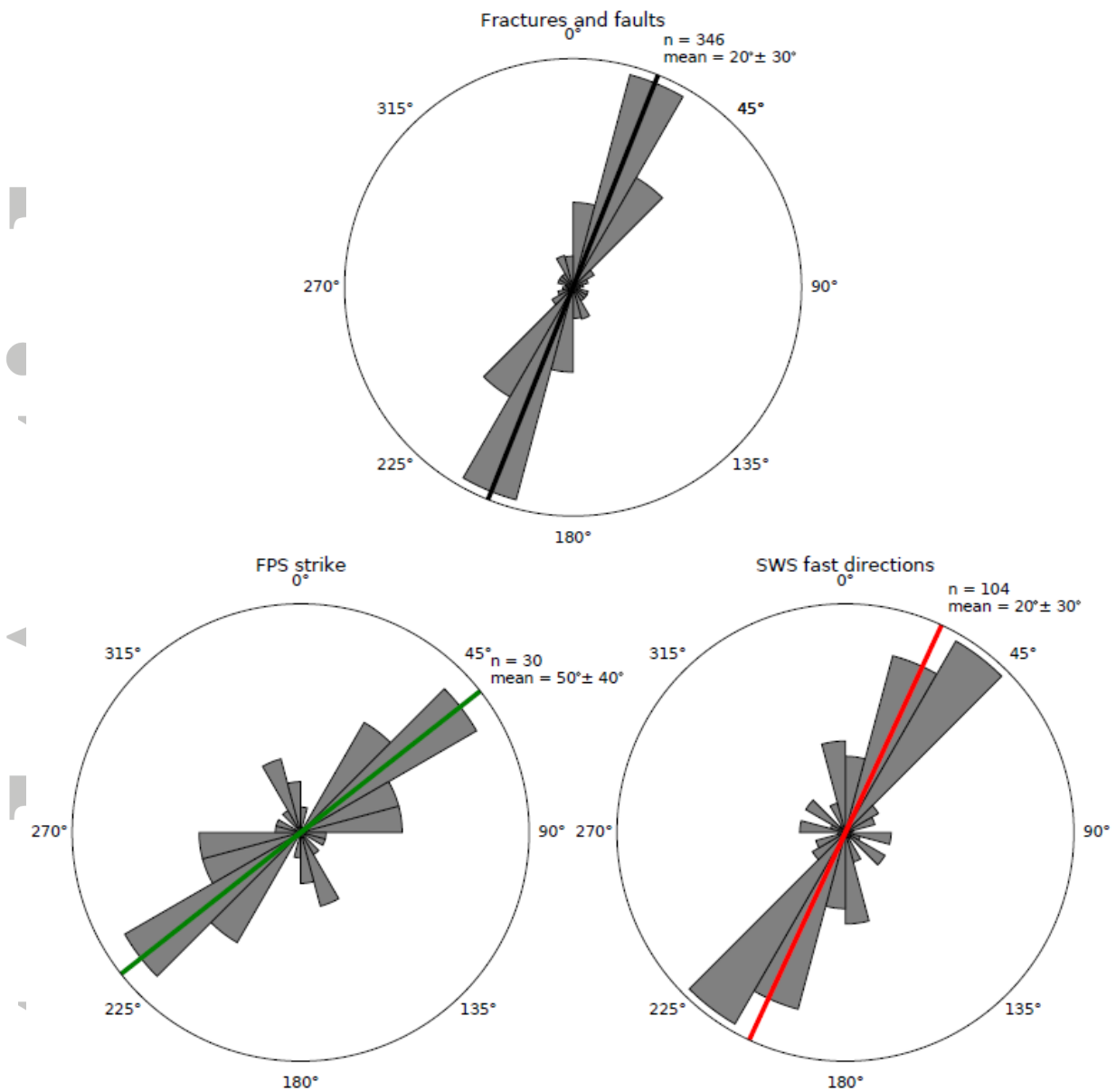


Figure 14. Orientation data recorded around B-TM. Data is plotted as polar histograms with 15° bin widths. Plotted clockwise from bottom-left is: FPS strike, mapped fracture and fault trends and SWS fast directions. The mean direction is indicated by the thick colored line and labelled, along with the standard deviation and number of observations, in the upper-right corner of each plot.