

OPEN

Author Correction: Perspectives on the prediction of catastrophic slope failures from satellite InSAR

Tommaso Carlà , Emanuele Intrieri , Federico Raspini, Federica Bardi, Paolo Farina, Alessandro Ferretti, Davide Colombo, Fabrizio Novali & Nicola Casagli

Correction to: *Scientific Reports* <https://doi.org/10.1038/s41598-019-50792-y>, published online 01 October 2019

In Figure 4, panel F (Cadia case study) is erroneously a duplicate of panel D (Xinmo case study). The correct Figure 4 appears below as Figure 1.

Published online: 05 December 2019

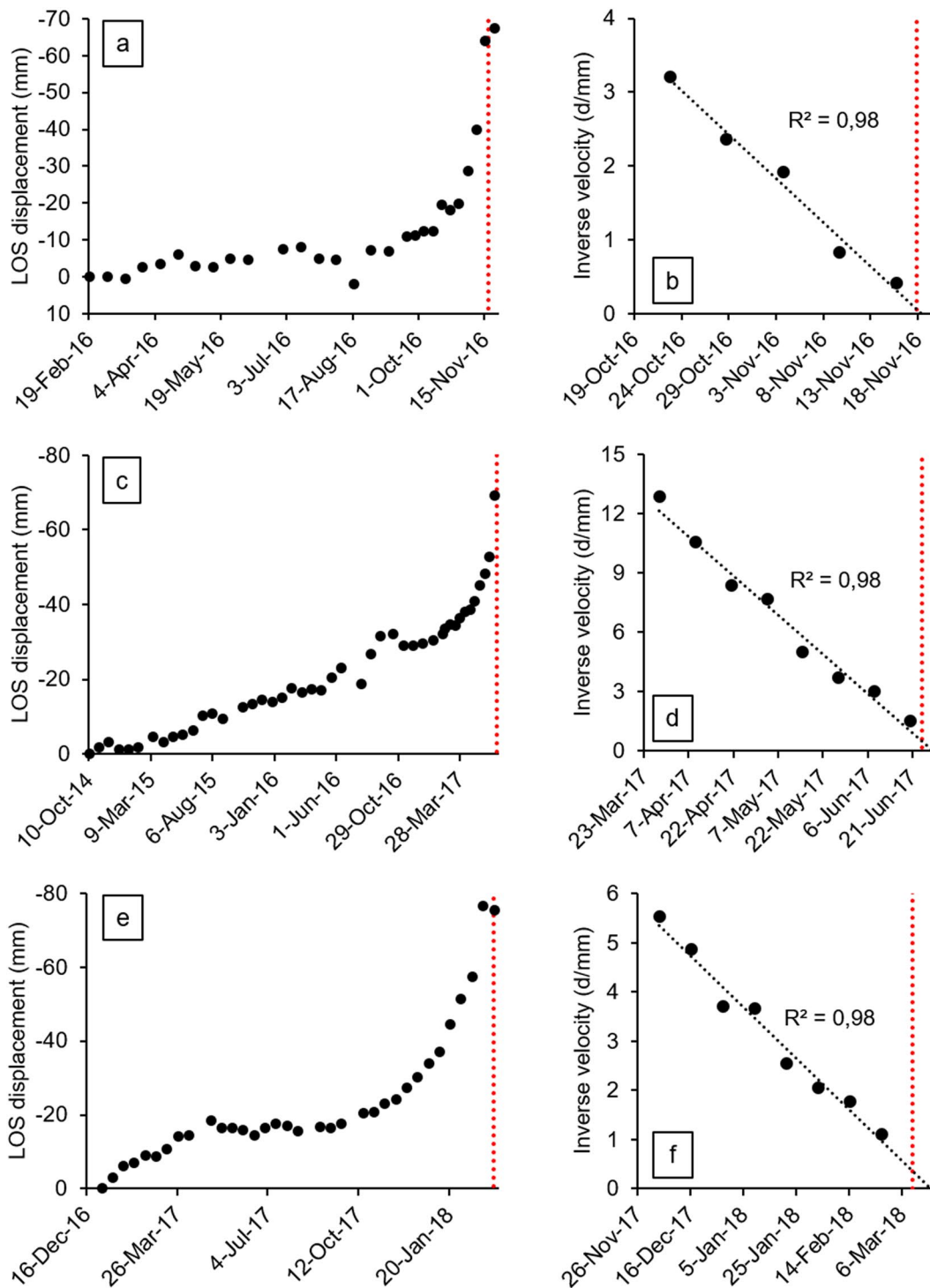


Figure 1.

Open Access This article is licensed under a Creative Commons Attribution 4.0 International License, which permits use, sharing, adaptation, distribution and reproduction in any medium or format, as long as you give appropriate credit to the original author(s) and the source, provide a link to the Creative Commons license, and indicate if changes were made. The images or other third party material in this article are included in the article's Creative Commons license, unless indicated otherwise in a credit line to the material. If material is not included in the article's Creative Commons license and your intended use is not permitted by statutory regulation or exceeds the permitted use, you will need to obtain permission directly from the copyright holder. To view a copy of this license, visit <http://creativecommons.org/licenses/by/4.0/>.

© The Author(s) 2019