



pISSN 2385-0442
eISSN 2385-0922



Natural History Sciences


<https://sisn.pagepress.org/index.php/nhs/index>

Publisher's Disclaimer. E-publishing ahead of print is increasingly important for the rapid dissemination of science. **Natural History Sciences** is, therefore, E-publishing PDF files of an early version of manuscripts that undergone a regular peer review and have been accepted for publication, but have not been through the copyediting, typesetting, pagination and proofreading processes, which may lead to differences between this version and the final one.

The final version of the manuscript will then appear on a regular issue of the journal. E-publishing of this PDF file has been approved by the authors.

To cite this Article:

Lastrucci L, Lunardi L, Fiorini G, Viciani D, 2022 - **Confirmation of the presence of *Eleocharis mamillata* (H.Lindb.) H.Lindb. subsp. austriaca (Hayek) Strandh. (Cyperaceae) in Piedmont (Italy).** Natural History Sciences, Milano doi: 10.4081/nhs.2022.581 [Epub Ahead of Print]

 © the Author(s), 2022
Licensee [PAGEPress](https://www.pagepress.org/), Italy

Note: The publisher is not responsible for the content or functionality of any supporting information supplied by the authors. Any queries should be directed to the corresponding author for the article.

Confirmation of the presence of *Eleocharis mamillata* (H.Lindb.) H.Lindb. subsp. *austriaca* (Hayek) Strandh. (Cyperaceae) in Piedmont (Italy)

Lorenzo Lastrucci^{1*}, Livia Lunardi², Graziana Fiorini³, Daniele Viciani⁴

¹ Collezioni di Botanica, Museo di Storia Naturale, Sistema Museale di Ateneo, Università di Firenze, Via G. La Pira 4, 50121 Firenze, lorenzo.lastrucci@unifi.it ORCID ID: 0000-0003-4455-389X

² Via Marcignano 37, 59015 Carmignano (Prato), lunaliv27@gmail.com

³ Via G. Berchet 33, 50019 Sesto Fiorentino (Firenze), graziana.fiorini@gmail.com

⁴ Dipartimento di Biologia, Università di Firenze, Via G. La Pira 4, 50121 Firenze, daniele.viciani@unifi.it ORCID ID: 0000-0003-3422-5999

* Corresponding author: lorenzo.lastrucci@unifi.it

Abstract - *Eleocharis mamillata* subsp. *austriaca* belongs to *Eleocharis* subser. *Eleocharis*. The presence of this entity in the Italian territory was known for almost all the Alpine administrative regions and for Calabria. According to the Portal to the Flora of Italy, this entity was reported for Piedmont based on erroneous records. Nevertheless, during a wide herbarium survey on the subseries *Eleocharis*, several old and recent specimens collected in Piedmont have been identified as *Eleocharis mamillata* subsp. *austriaca*. Therefore, we can confirm the presence of the *taxon* in this region and provide a distribution map on the basis of the analysed material.

Key words: Herbarium, Northern Italy, systematics, taxonomy.

Riassunto - Conferma della presenza di *Eleocharis mamillata* (H.Lindb.) H.Lindb. subsp. *austriaca* (Hayek) Strandh. (Cyperaceae) in Piemonte (Italia).

Eleocharis mamillata subsp. *austriaca* appartiene a *Eleocharis* subser. *Eleocharis*. La presenza di questa entità in Italia era nota per quasi tutte le regioni alpine e per la Calabria. Come riportato dal Portale della Flora d'Italia, per il Piemonte questa entità era stata indicata sulla base di segnalazioni erranee. Tuttavia nel corso di un'ampia indagine erbariologica sulla subserie *Eleocharis*, diversi campioni antichi e recenti sono stati determinati come *Eleocharis mamillata* subsp. *austriaca*. Possiamo quindi confermare la presenza di questo *taxon* in questa regione e fornire una mappa distributiva basata sul materiale analizzato.

Parole chiave: Erbario, Italia settentrionale, sistematica, tassonomia.

INTRODUCTION

Eleocharis mamillata (H.Lindb.) H.Lindb subsp. *austriaca* (Hayek) Strandh. belongs to *Eleocharis* R.Br. subser. *Eleocharis*, which includes species with Holarctic distribution (Bureš et al., 2004). The subspecies is distributed, with some lacunae, mainly in upland regions of northern and central Europe from Great Britain and Spain to Ukraine reaching Norway and the Svalbard Islands to the North, and Azerbaijan to the East (see Walters, 1980; Jiménez-Mejías & Luceño, 2011). *E. mamillata* subsp. *austriaca* mainly develops in marshlands, on the banks of lakes and streams, usually on basic soils (Walters, 1981). From a phytosociological point of view, this taxon becomes part of the communities of the *Phragmites communis* Koch 1926 and *Glycerio-Sparganion* Br.-Bl. et Sissingh in Boer 1942 (Pignatti et al., 2017). This entity was reported for Piedmont in the first Check-list of the Flora of Italy (Conti et al., 2005) but shortly after Ercole et al. (2012) suggested to investigate in depth the actual presence of the taxon in the region. In the second Check-list of the Flora of Italy *E. mamillata* subsp. *austriaca* was reported for all the northern regions from Aosta Valley to Friuli Venezia Giulia with the exception of Piedmont (Bartolucci et al., 2018), where it was considered present in the past based on erroneous records (see also the Portal to the Flora of Italy, <http://dryades.units.it/floritaly>: Galasso et al., 2020; Martellos et al., 2020). It should be noted, however, that Pignatti et al. (2017) indicated the presence of this subspecies also for the Cuneo territory (Piedmont). In addition, very recently Bartolucci et al. (2019) reported *E. mamillata* subsp. *austriaca* also for a mountain area of Calabria on the basis of an ancient herbarium specimen formerly identified as *E. palustris*. During a wide revision of the herbarium materials belonging to the subseries *Eleocharis* (see Lastrucci et al., 2018, 2020), the presence of some specimens attributable to *E. mamillata* subsp. *austriaca* from Piedmont was put in evidence, confirming the presence of the taxon in the region. In this work, we analyse the herbarium material from Piedmont determined as *E. mamillata* subsp. *austriaca*, highlighting the diagnostic morphological characters related to achenes and stomata, and mapping the distribution of the studied specimens.

MATERIALS AND METHODS

The analysed specimens come from the herbaria of Florence (FI) and Turin (TO, Herbarium codes according to Thiers, 2021+). In particular, as regards FI, the Herbarium Centrale Italicum

(hereafter FI-HCI; see: Moggi, 1993; Cucuini & Lastrucci, 2007) was investigated, while as regards to TO, the General Herbarium and the Pedemontanum Herbarium were surveyed (hereafter TO-HG and TO-HP; see: Forneris, 1993).

The observation of achenes was performed under a binocular microscope Zeiss 47-50-52 9901 and a Dino-Lite Digital Microscope. For the stomata analysis, for each specimen we took a fragment of the middle part of the culm under the spikelet (see Strandhede, 1966) subsequently immersing it in a solution of glycerol and water (1:80 dilution), brought to a boil and then cooled for 15 minutes. Epidermis was then removed using lancets and tweezers, and some fragments were stained with toluidine (0.05% in water) and mounted on a slide. Stomata were thus observed and measured (μm) under an optical microscope at a magnification of 40 \times .

The distribution map of the analysed specimens was performed using the opensource software QGIS (version 3.18).

RESULTS

Nine specimens from several localities of Piedmont have been determined as *E. mamillata* subsp. *austriaca*. In addition, two ancient specimens coming from sites very close to the current Italian border were added at the list of records, testifying the presence of the taxon in the Moncenisio area. The distribution maps of the Italian specimens analysed is shown in Fig. 1.

Specimina visa

France. Luoghi umidi alpini del Cenisio presso alla Gran Croce, 29/07/1834, *F. Parlatore* (FI-HCI barcode FI061866); M. Cenis. Nördlich vom See, 22/07/????, *F. Ungern-Sternberg* (TO-HP). **Italy, Piedmont.** Valle Gesso, pozza d'acqua stagnante al Piano del Vallasco presso la mulattiera, 1760 m, 14/07/1897, *O. Boggiani* (FI-HCI barcode FI061864); L. umidi a Beura (Ossola), 01/09/1897, *G. Gola* (TO-HP); Valle Formazza, acquitrini alla Fontana di S. Michele lungo la mulattiera da Chiesa a Valdo, 1259 m, 30/07/1914, *O. Boggiani*, (FI-HCI barcode FI061867); Destra dell'Orco tra Bosconero e S. Benigno, 16/09/1915, *E. Ferrari, F. Vallino & E. Mussa* (TO-HP); Valle Formazza, sotto Riale, 01/08/1924, *O. Boggiani* (FI-HCI barcode FI061865); Grange di Nole, lungo la Stura di Lanzo, 24/06/1986, *D. Rosenkrantz* (TO-HP); *ibidem*, 04/07/1986 (TO-HP); Stura River, Nole Canavese, province of Torino, NW Italy, along the river, 15/08/1992, *E. Martinetto* (TO-HP); Alpi Marittime, Valle Stura, Moiola, zona paludosa nell'alveo del fiume, 28/05/2002, *M. Pascale*, (TO-HP).

DISCUSSION

The distinction between *E. mamillata* subsp. *austriaca* and *E. palustris* s.l. is often critical because it is basically founded on the morphology of the achenium and the stylopodium, present only on mature specimens, or on micro-morphological characters that are difficult to observe (Strandhede, 1966; Jiménez Mejías & Luceño, 2008). In fact, in the *E. palustris* group the stylopodium is generally separated from the achenium by a sort of constriction that is missing in the *E. mamillata* subsp. *austriaca* in which sometimes, instead, the stylopodium rests on a short jamb (Jiménez Mejías & Luceño, 2008). The bristles surrounding the achenium can have a diagnostic value in the distinction between the two groups, because *E. palustris* has mainly 4 bristles while *E. mamillata* subsp. *austriaca* more than 4 bristles (mainly 5 or less frequently 6); nevertheless, especially in *E. mamillata* subsp. *austriaca*, there may be a certain variability and also 4 bristles can be present, leading to an overlap with *E. palustris* (Strandhede, 1966; Walters, 1980; Jiménez Mejías & Luceño, 2008).

Among the micro-morphological characters, the analysis of stomata plays a great importance, as in the *E. mamillata* group the stomatal guard cells are longer than the subsidiary cells, protruding at the end of the stomata (Strandhede, 1966) so that the short side of the stoma appears convex (Jiménez Mejías & Luceño, 2008), while the reverse situation occurs in the *E. palustris* group.

According to Jiménez Mejías & Luceño (2008) another differential micro-anatomical character lies in the number of epidermal cells separating the collenchyma strings, which are predominantly 1-3 in *E. palustris* group and mostly 3-5 (or more, see Strandhede, 1966) in *E. mamillata*, although also in

in this case a certain variability may lead to overlaps between the two groups (Jiménez Mejías & Luceño, 2008). On the contrary, the number of vascular bundles, used in some dichotomous keys (e.g. Pignatti, 1982), does not have great taxonomic value as it strongly depends on the circumference of the stem (Strandhede, 1966).

The chromosomal number, useful to distinguish only *E. palustris* subsp. *waltersii* from the *E. mamillata* group and *E. palustris* subsp. *palustris*, is not a character suitable in a herbarium study.

Within the *E. mamillata* group, the stylopodium has a high diagnostic value, being mostly mamillate in *E. mamillata* subsp. *mamillata* and, on the contrary, conical and generally narrow and long in *E. mamillata* subsp. *austriaca* (Strandhede, 1966).

Based on the results of the analyzed characters, in particular the shape of the stylopodium and stomata (Fig. 2), several specimens from the two consulted herbaria can be determined as *E. mamillata* subsp. *austriaca*. This allows to confirm the presence of this taxon in Piedmont (Fig. 1), from which it was instead excluded in the recent checklist of the Italian vascular flora (Bartolucci et al., 2018) and subsequent updates (Portal to the Flora of Italy, <http://dryades.units.it/floritaly>).

E. mamillata subsp. *austriaca* from Piedmont is present in the studied collections both with ancient specimens, collected by nineteenth-century and early twentieth-century botanists, but also with exsiccata dating back to the early twenty-first century, at least in TO-HP. Almost all the specimens were originally determined as *Eleocharis palustris*, except that collected in Nole Canavese, originally attributed to *E. cfr. palustris* but later attributed to *E. mamillata* subsp. *austriaca*, as stated on the label.

ACKNOWLEDGMENTS

The authors wish to thank Dr. Chiara Nepi (Natural History Museum of the University of Florence) and Dr. Laura Guglielmo (Department of Life Sciences and Systems Biology of the University of Turin) for their kindness. A special thanks to Lorella Dell'Olmo (Biology Department of the University of Florence), who prepared Fig. 1.

REFERENCES

- Bartolucci F., Peruzzi L., Galasso G., Albano A., Alessandrini A., Ardenghi N. M. G., Astuti G., Bacchetta G., Ballelli S., Banfi E., Barberis G., Bernardo L., Bouvet D., Bovio M., Cecchi L., Di Pietro R., Domina G., Fascetti S., Fenu G., Festi F., Foggi B., Gallo L., Gottschlich G., Gubellini L., Iamonico D., Iberite M., Jiménez-Mejías P., Lattanzi E., Marchetti D., Martinetto E., Masin R. R., Medagli P., Passalacqua N. G., Peccenini S., Pennesi R., Pierini B., Poldini L., Prosser F., Raimondo F. M., Roma-Marzio F., Rosati L., Santangelo A., Scoppola A., Scortegagna S., Selvaggi A., Selvi F., Soldano A., Stinca A., Wagensommer R. P., Wilhelm T. & Conti F., 2018 – An updated checklist of the vascular flora native to Italy. *Plant Biosystems*, 152 (2): 179-303. <doi: 10.1080/11263504.2017.1419996>
- Bartolucci F., Domina G., Ardenghi N.M.G., Bacaro G., Bacchetta G., Ballarin F., Banfi E., Barberis G., Beccarisi L., Bernardo L., Bonari G., Bonini F., Brullo S., Buono S., Buono V., Calbi M., Caldararo F., Calvia G., Cancellieri L., Cannavò S., Dagnino D., Esposito A., Fascetti S., Filibeck G., Fiorini G., Forte L., Galasso G., Gestri G., Gigante D., Gottschlich G., Gubellini L., Hofmann N., Lastrucci L., Lonati M., Lorenz R., Lunardi L., Magrini S., Mainetti A., Maiorca G., Mereu G., Messa Ballarin R. T., Minuto L., Mossini S., Musarella C. M., Nimis P. L., Passalacqua N. G., Peccenini S., Petriglia B., Podda L., Potenza G., Ravetto Enri S., Roma-Marzio F., Rosati L., Ruggero A., Spampinato G., Stinca A., Tiburtini M., Tietto C., Tomaselli V., Turcato C., Viciani D. Wagensommer R. P. & Nepi C., 2019 – Notulae to the Italian native vascular flora: 8. *Italian Botanist*, 8: 95-116. <doi: 10.3897/italianbotanist.8.48626>
- Conti F., Abbate G., Alessandrini A. & Blasi C. (eds.), 2005 – An annotated check-list of the Italian vascular flora. Palombi Editori, Roma.

- Bureš P., Rotreklová O., Stoneberg Holt S.D. & Pikner R., 2004 – Cytogeographical survey of *Eleocharis* subser. *Eleocharis* in Europe 1: *Eleocharis palustris*. *Folia Geobotanica*, 39(3): 235-257
- Cuccuini P. & Lastrucci L., 2007 – Herbarium updating: the case of Florence (FI) with proposals for a checklist of new entities after the Flora d'Italia (1982) by S. Pignatti. *Quaderni di Botanica Ambientale e Applicata*, 18: 3-76.
- Ercole E., Pistarino A., Martinetto E., Soldano A. & Siniscalco C., 2012 – Atlante fotografico dei frutti e dei semi della flora del Piemonte e della Valle d'Aosta: Cyperaceae. *Boll. Mus. reg. Sci. nat. Torino* 29(1): 5-28
- Fornieris G., 1993 – «Spigolature» nelle collezioni dell'Erbario torinese (TO). *Webbia*, 48: 267-285. <doi: 10.1080/00837792.1993.10670564>
- Galasso G., Bartolucci F., Conti F., Martellos S., Moro A., Pennesi R., Peruzzi L., Pittao E. & Nimis P. L., 2020 – L'inventario della flora spontanea italiana e il nuovo Portale della Flora d'Italia. In: Al Museo per scoprire il mondo. La ricerca scientifica e le mostre temporanee. Museo di Storia Naturale di Milano 2014-2019. Alessandrello A. & Azuma M. (eds.). *Natura*, 110 (1): 47-56.
- Jiménez Mejías P. & Luceño M., 2008. *Eleocharis* R.Br. In: Flora Iberica. Vol. 18. Castroviejo S., Luceño M., Galán A., Jiménez Mejías P., Cabezas F. & Medina L. (eds.). Real Jardín Botánico, Madrid: 75-91.
- Jiménez-Mejías P. & Luceño M., 2011. Cyperaceae. In: Euro+Med Plantbase - the information resource for Euro-Mediterranean plant diversity. <https://europlusmed.org/cdm_dataportal/taxon/cb405f54-5a07-4515-8865-3e7e6bc15ab7> (retrieved on November 2021).
- Lastrucci L., Cecchi L. & Viciani D., 2018 – Typification of *Eleocharis palustris* (L.) Roem. & Schult. var. *reptans* Parl. *Phytotaxa*, 375 (3): 243-245. <doi: 10.11646/phytotaxa.375.3.7>
- Lastrucci L., Lazzaro L., Lunardi L., Fiorini G. & Viciani D., 2020 – Morphometric surveys on *Eleocharis palustris* (L.) Roem. et Schult. (Cyperaceae). The contribution of herbarium investigations to the delimitation of its subspecies and their distribution in Italy. *Annali di Botanica (Roma)*, 10: 97-105. <doi: 10.13133/2239-3129/16502>
- Martellos S., Bartolucci F., Conti F., Galasso G., Moro A., Pennesi R., Peruzzi L., Pittao E. & Nimis P. L., 2020 – FlorItaly - the portal to the Flora of Italy. *PhytoKeys*, 156: 55-71. <doi: 10.3897/phytokeys.156.54023>
- Moggi G., 1993 – Botanical collections in Florence from their origin to the present day. *Webbia*, 48: 35-60. <doi: 10.1080/00837792.1993.10670564>Pignatti S., 1982 – Flora d'Italia. Vol. 3. Edagricole, Bologna.
- Pignatti S., Guarino R. & La Rosa M. 2017 – Flora d'Italia, Ed. 2, Vol. 1. Edagricole, Bologna.
- Strandhede S. O., 1966 – Morphologic variation and taxonomy in European *Eleocharis*, subser. *Palustres*. *Opera Botanica*, 10 (2): 1-187.
- Thiers B., 2021+ – Index Herbariorum: a global directory of public herbaria and associated staff. New York: Botanical Garden's Virtual Herbarium. <<http://sweetgum.nybg.org/science/ih/>> (retrieved on July 2021).
- Walters S. M., 1980 – *Eleocharis* R.Br.. In: Flora Europaea. Vol. 5. Tutin T. G., Heywood V. H., Burges N. A., Moore D. M., Valentine D. H., Walters S. M. & Webb D. A. (eds.). Cambridge University Press, Cambridge, New York, port Chester, Melbourne, Sydney: 281-284.

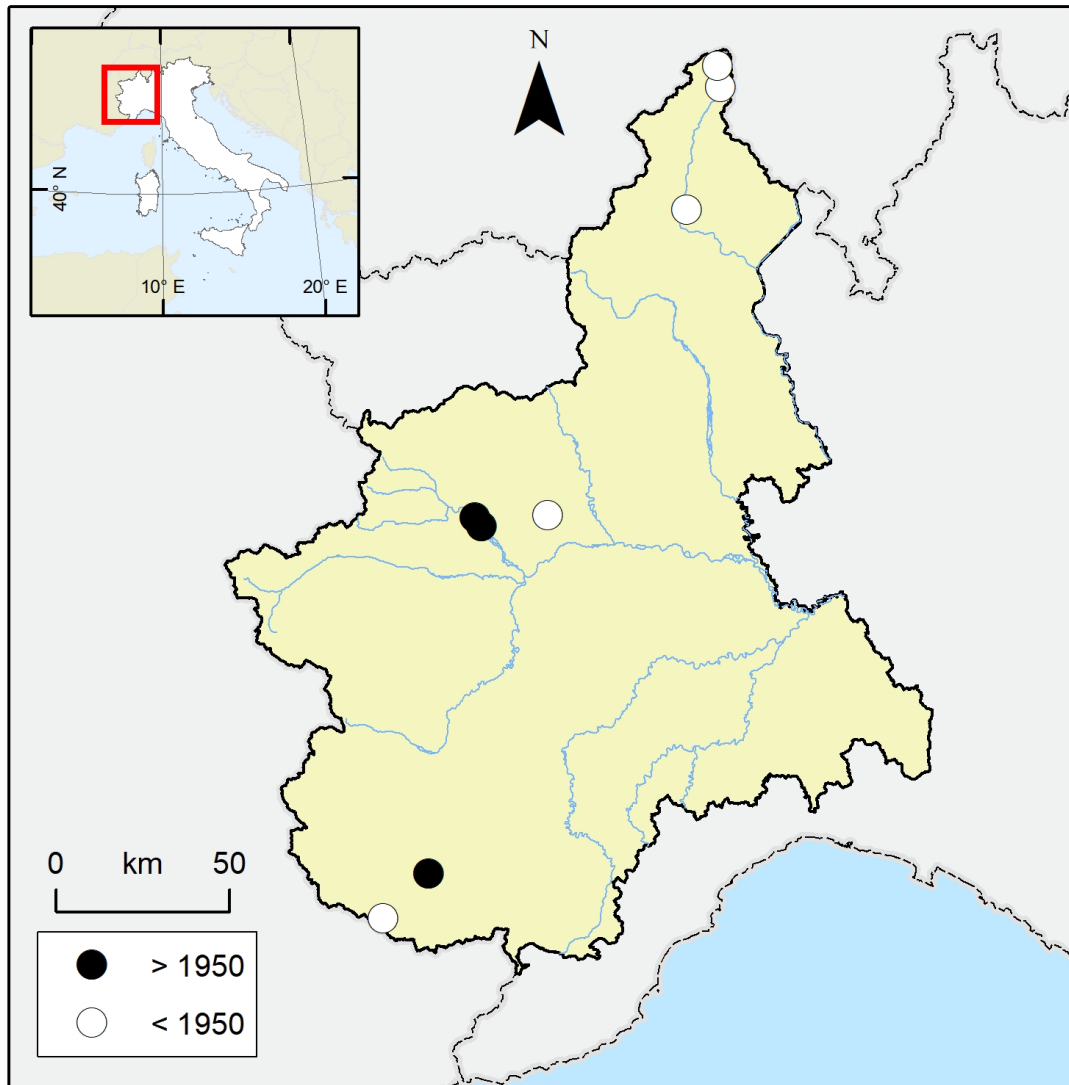


Fig. 1. Distribution maps of the Italian specimens analysed. White dots: specimens collected before 1950. Black dots: specimens collected after 1950. / Mappa di distribuzione dei campioni italiani analizzati. Cerchio bianco: campioni raccolti prima del 1950. Cerchio nero: campioni raccolti dopo il 1950.

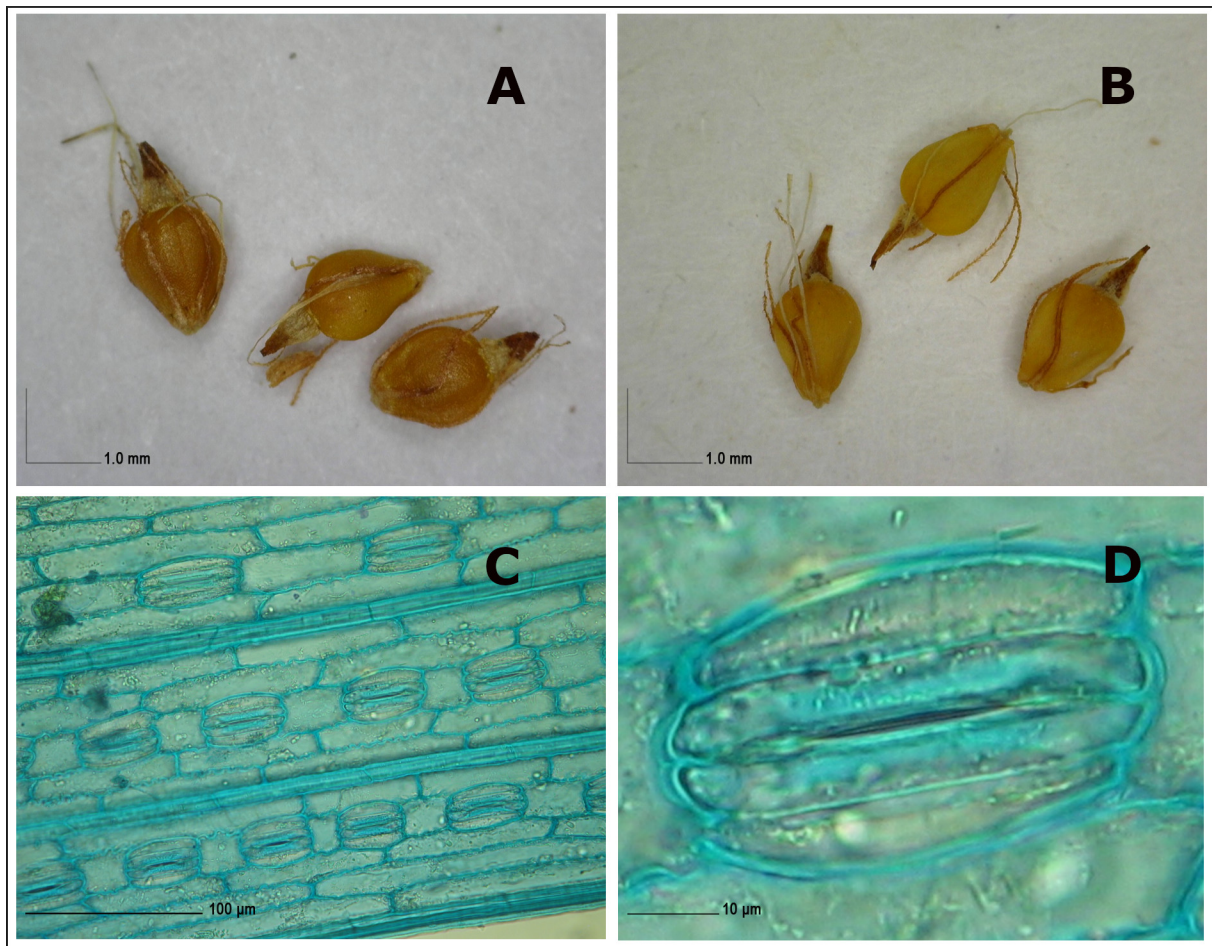


Fig. 2. Particular of some diagnostic characters of *E. mamillata* subsp. *austriaca*. Achenes with stylopodia (A and B). Epidermid with stomata (C) and detail (D) showing the stomatal guard cells longer than the subsidiary cells, protruding at the end of the stoma. / Particolare di alcuni caratteri diagnostici di *E. mamillata* subsp. *austriaca*. Acheni con stilopodi (A e B). Epidermide con stomi (C) e dettaglio (D) che mostra le cellule di guardia stomatiche più lunghe delle cellule sussidiarie, sporgenti alla fine dello stoma.