



UNIVERSITÀ
DEGLI STUDI
FIRENZE

FLORE

Repository istituzionale dell'Università degli Studi di Firenze

YOLO-based detection of Halyomorpha halys in orchards using RGB cameras and drones

Questa è la Versione finale referata (Post print/Accepted manuscript) della seguente pubblicazione:

Original Citation:

YOLO-based detection of Halyomorpha halys in orchards using RGB cameras and drones / Sorbelli, FB; Palazzetti, L; Pinotti, CM. - In: COMPUTERS AND ELECTRONICS IN AGRICULTURE. - ISSN 0168-1699. - ELETTRONICO. - 213:(2023), pp. 0-0. [10.1016/j.compag.2023.108228]

Availability:

This version is available at: 2158/1347488 since: 2023-12-30T16:17:08Z

Published version:

DOI: 10.1016/j.compag.2023.108228

Terms of use:

Open Access

La pubblicazione è resa disponibile sotto le norme e i termini della licenza di deposito, secondo quanto stabilito dalla Policy per l'accesso aperto dell'Università degli Studi di Firenze (<https://www.sba.unifi.it/upload/policy-oa-2016-1.pdf>)

Publisher copyright claim:

(Article begins on next page)

YOLO-based Detection of *Halyomorpha halys* in Orchards Using RGB Cameras and Drones *

Francesco Betti Sorbelli^a, Lorenzo Palazzetti^{b,a}, Cristina M. Pinotti^a

^aDepartment of Computer Science and Mathematics, University of Perugia, Italy

^bDepartment of Computer Science and Mathematics, University of Florence, Italy

Abstract

This paper explores the utilization of innovative technologies, such as drones and artificial intelligence algorithms, for monitoring pests in orchards, with a specific focus on detecting the *Halyomorpha halys* (HH), commonly known as the *Brown marmorated stink bug*. The integration of autonomous drones and suitable vision chips into integrated pest management shows promising potential for effectively combating HH infestations. However, challenges arise from relying solely on deep learning models trained using high-quality images from public datasets. In this work, we significantly improve the quality of preliminary results obtained on artificial datasets by constructing an enhanced dataset of images mainly captured in the field. We then conduct an in-depth analysis of the captured images, considering factors such as blurriness and brightness, to assess the use of our hardware and to improve the performance of the machine learning (ML) algorithms. Subsequently, we proceed to train and evaluate various ML models based on the YOLO framework, employing different metrics to compare their performance. Through the optimization of ML models and the correction of image imperfections, this paper contributes to advancing automated decision-making processes in pest insect monitoring and management, specifically in HH monitoring.

Keywords: Unmanned aerial vehicles, Insect detection, *Halyomorpha halys*, Brown marmorated stink bug, Computer vision algorithms, YOLO

*This work was supported in part by the “GNCS – INdAM”, by “HALY.ID” project funded by the European Union’s Horizon 2020 under grant agreement ICT-AGRI-FOOD no. 862665, no. 862671, by MIPAAF, by RESIDUAL, and by RB_DMI_2019.

Email addresses: francesco.bettisorbelli@unipg.it (Francesco Betti Sorbelli), lorenzo.palazzetti@unifi.it, lorenzo.palazzetti@collaboratori.unipg.it (Lorenzo Palazzetti), cristina.pinotti@unipg.it (Cristina M. Pinotti)

9 1. Introduction

10 Agriculture is the basis of human sustenance. Yet work in the fields is strenuous that fewer and
11 fewer workers will be found willing to toil under the sun. Furthermore, due to the expanding global
12 population, there is an escalating demand for food. So, it is crucial to enhance both production ca-
13 pacity and quality food standards. Due to these reasons, numerous institutions are actively striving
14 by leveraging new technologies. Until recently, in agriculture there has been an underutilization of
15 state-of-the-art technologies and automation that other sectors of the economy have already ben-
16 efit from [1]. In light of this, this paper focuses on the transition towards informed automated
17 decision-making processes in agriculture, leveraging innovative technologies such as drones, vision
18 chips, and machine learning algorithms. Our aim is to explore their application in the monitoring
19 of orchards to effectively detect the presence of harmful insects [2, 3, 4].

20 Orchard monitoring is a complex agricultural activity that necessitates a multidisciplinary
21 approach encompassing agronomy, botany, biology, as well as computer science and engineering
22 expertise [5]. Monitoring pests in orchards is a vital aspect of integrated pest management (IPM)
23 but is recognized as a labor-intensive and time-consuming task. In this paper, we address the IPM
24 of the *Halyomorpha halys* (HH), commonly known as the *Brown marmorated stink bug* (BMSB),
25 as our case study. HH is an invasive stink bug originally native to East Asian regions such as
26 China and Japan [6]. It poses a significant threat as a harmful and polyphagous pest, known to
27 feed on a wide range of host plants. In particular, fruits such as pears, peaches, and nuts are
28 among its preferred targets, leading to crop damage and loss. The spread of HH across the globe
29 can be attributed to human activities, such as global trade, as well as climate change. Its presence
30 was first documented in the United States of America in the 1990s and subsequently in Europe
31 in the 2010s. In Italy, the detrimental impact of HH was first observed in 2012 in the Emilia
32 Romagna region, which is home to some of Europe’s most valuable orchards [7]. Only in Italy,
33 HH caused several million euros in damages to the main fruit productions in 2019. Currently,
34 HH monitoring is performed with traps, that are unreliable and increase the overall damage, or
35 using time-consuming active monitoring techniques. Attempts to counteract the HH outbreaks led
36 to a massive increase in broad-spectrum pesticide use, disrupting all previous IPMs, increasing
37 producer costs, and causing negative consequences to the environment and consumers.

38 In February 2021, the Horizon 2020 HALY.ID project [8] was granted with the objective of

39 automating the monitoring activities by growers and plant health operators by July 2024. The
40 main idea is to minimize or eliminate the reliance on traditional monitoring devices and activities,
41 such as traps, baits, visual sampling, sweep netting, and *frappage* (i.e., tree beating). Instead,
42 an automated monitoring process for scouting the HH is proposed. Ongoing preliminary results
43 concerning the whole automated system for scouting HH are presented by Almstedt et al. [9].
44 The current system incorporates advanced technological innovations, including a drone equipped
45 with an RGB vision chip, a smart camera integrated into a specially designed sticky trap, and
46 micro-climate stations for collecting temperature, pressure, and other pertinent data. Addition-
47 ally, another ongoing research involves the analysis of ripe fruits using near-infrared hyperspectral
48 imaging (NIR-HSI) to detect punctures that are not visible to the naked eye.

49 In this paper, we primarily concentrate on one of the initial objectives of the HALY.ID project,
50 which involves the identification of the HH from in-field images, possibly captured by drones
51 or other devices, utilizing machine learning (ML) models. We decided to rely on the YOLO
52 framework as the ML model since it was the best model in preparatory papers [10, 9], and which is
53 acknowledged for meeting real-time performance requirements which indeed are the ultimate goal
54 of the HALY.ID project. The initial attempts to detect HH have been conducted by using datasets
55 not built in the field. Consequently, when these models have been tested on in-field images, their
56 performance significantly deteriorated. Especially, the results in [9] suggest that ML algorithms
57 trained on datasets formed of optimal and high-quality images sourced from public repositories and
58 artificially augmented, do not produce satisfactory results if then applied to a real scenario like ours.
59 Accordingly, it became imperative for us to construct a suitable dataset comprising predominantly
60 field-captured images obtained from drones or other devices to train, verify, and test the ML
61 model. Since the authors in [9] suggested that factors such as blurriness and brightness of the
62 images captured by the drone contribute to unsatisfactory results, in this study, we thoroughly
63 investigate these factors on the image quality. We conclude that by appropriately configuring
64 the vision chip and optimizing the drone’s positioning, issues of blurriness and brightness can
65 be effectively mitigated and are not limiting factors for the use of the drone. Additionally, we
66 observed that a certain level of blurriness enhances the robustness of the model. However, it is
67 important to avoid the misconception that increasing the blur level improves object recognition.
68 We have demonstrated that the localization and detection of the bug deteriorate when all images

69 are excessively blurred. The key lesson to take away is the significance of training the computer
70 vision algorithm on the specific context in which it will be deployed for testing, or in a real-world
71 application.

72 *Contributions and Paper Organization*

73 Our results are summarized as follows:

- 74 • We create the first dataset¹ of HH by using in-field images *mainly* taken by a drone, and
75 improve its quality through a preliminary screening process aimed at eliminating unsuitable
76 images prior to the ML training;
- 77 • We train and evaluate multiple ML models using the YOLO framework on our built dataset
78 obtaining very good results by evaluating different metrics;
- 79 • We also prove the influence of blurriness and brightness on image quality in the HH detection
80 experiments.

81 The paper is structured as follows: We present the relevant related work in Section 2. The
82 built dataset used for the project is presented in Section 3, while Section 4 covers the conducted
83 ML experiments. Finally, conclusions are drawn in Section 5.

84 **2. Related Works**

85 The utilization of drones in the field of agriculture can be advantageous in various ways. It can
86 be used in conjunction with satellites to create vegetation indicators [11, 12, 13], or for monitoring
87 wildlife and cows [14, 15], just to mention a few. The use of drones can result in the capture of a
88 vast amount of imagery, and when combined with ML algorithms, it can make the system faster
89 and more accurate than human observers in monitoring and estimating animal populations.

90 Nowadays, there has been a growing emphasis on employing ML techniques for monitoring
91 insect species. Traditional methods such as support vector machine, adaptive boosting, artificial
92 neural network [16, 17, 18, 19], and deep learning techniques based on convolutional neural networks
93 (CNNs) [20, 21, 22] have demonstrated optimal results in insect monitoring. For instance, a

¹Currently, the dataset is set as private as required by the HALY.ID consortium agreement. At the end of the project, it will be released to the scientific community for research purposes.

94 novel approach for early detection and continuous monitoring of adult-stage whitefly and thrip in
95 greenhouses has been proposed in [17]. The approach is based on an image-processing algorithm
96 and artificial neural networks. The developed whitefly and thrip identification algorithm achieved
97 very satisfactory results. This proposed approach has the potential to improve IPM strategies and
98 reduce the use of harmful chemicals in greenhouse agriculture.

99 To the best of our knowledge, apart from the HALY.ID project, only a limited number of
100 studies have showcased the direct detection of insects through aerial surveys conducted with drones
101 in open fields. This is despite the fact that drones can be equipped with specialized cameras capable
102 of capturing high-resolution images of small objects and GPS technology for efficient positioning.
103 One of these works aims to determine the effectiveness of drones in detecting the immobile stage of
104 the *Monema flavescens* [23]. The results indicate that an aerial survey performed with a drone at a
105 height of 3 m above the tree canopy is more efficient and successful in identifying butterfly cocoons
106 than a ground survey. Additionally, the captured images demonstrate the ability to differentiate
107 between open and closed cocoons. So, the authors highlight the potential of drones for detecting
108 insects directly in agriculture.

109 In the initial phase of the HALY.ID project, there have been several attempts to scouting
110 HH using different imaging technologies. Ferrari et al. [24] evaluate the use of NIR-HSI as a
111 potential technology for detecting HH specimens on various vegetal backgrounds that can mimic
112 field conditions. From a set of hyperspectral images comprising HH, two chemometric approaches
113 have been used to develop classification models. The first one focuses on spectral information, and
114 selects relevant spectral regions for discrimination, while the second one uses CNN to model spatial
115 and spectral features in the hyperspectral images. The authors then merge the two strategies by
116 considering only the spectral regions selected by the first approach for CNN modeling. The results
117 demonstrate the potential of NIR-HSI combined with chemometric analysis and CNNs to detect
118 HH accurately, even when mimicking different background conditions. Although this technology
119 holds the potential to become an effective tool for IPM in the agricultural sector, offering timely
120 and accurate information to prevent substantial economic losses, it is currently not ready for field
121 deployment due to its prohibitive cost.

122 Additionally, in the context of HALY.ID project, several preliminary studies using RGB cam-
123 eras have also been conducted to detect HH. Trufeala et al. [25] propose the use of deep learning

124 models to classify pests belonging to the Pentatomidae family. Specifically, they propose to train
125 a CNN to recognize four different kinds of Pentatomidae insects, including HH adult, HH nymph,
126 *Pyrrhocoris apterus*, and *Nezara viridula*. A total of 760 images have been used for training (600)
127 and validation (160). Among them, 520 images are from the Maryland Biodiversity database [26],
128 and 240 from a custom dataset collected by professional cameras. A modified Single Shot Detector
129 (SSD) model having the Intersection over Union (IoU) value of 70.2 as performance indicator has
130 been proposed by the same authors. Subsequently, Ichim et al. [27] investigate the identification
131 of HH insect with four CNNs, namely, GoogLeNet, ResNet101, DenseNet201, and VGG19. The
132 dataset is built on two public datasets with many different insects, and a custom dataset collected
133 with a DJI Mini 2 drone containing images with adults and nymphae of HH. All the images from
134 the dataset are resized to 227×227 pixels. Transfer learning and data augmentation are utilized
135 to reduce computational effort during the learning phase, and statistical indicators (such as pre-
136 cision and recall) derived from confusion matrices are employed to evaluate the performance of
137 each CNN. The performances are good when the networks are tested on data similar to the ones
138 in the public dataset, i.e., images of the insects taken in the laboratory with professional cameras
139 by expert photographers. The learning time is also considered in this paper.

140 Very recently, the “You Only Look Once” (YOLO) [28] model has been used to detect harmful
141 insects in ecological orchards by Sava et al. [10]. The authors evaluate YOLO with region-based
142 CNNs (R-CNN), and several YOLO models have been trained, validated, and tested on the afore-
143 mentioned Maryland dataset [26], which contains professional macro images of HH in different
144 poses, from different short distances, and at different stages of evolution. As a conclusion, the
145 best results have been obtained using the YOLO-m model which obtains for all metrics (precision,
146 recall, and mean average precision) results above 95%. However, the authors did not evaluate their
147 models on datasets built from in-field images.

148 *2.1. Motivations for a New Experiment*

149 After the preliminary results in [25, 10], the primary objective became the training of ML
150 models on new in-field images. To accomplish this, in our previous work in [9] we adopted a
151 lightweight deep neural network (DNN) called *CenterNet* [29]. CenterNet is an SSD model capable
152 of processing each image in a single step and is compatible with various backbones, including
153 *RegNet* [30], which we utilized. Initially, CenterNet was trained solely on images captured by

154 the HALY.ID project’s drone, specifically the DJI Matrice 300, in a first-person view mode,
 155 while flying within the aisles between the rows of the pear trees. Unfortunately, the performance
 156 results were unsatisfactory, primarily due to the limited size of the in-field dataset. To address
 157 this, an additional semi-artificial dataset was generated, distinct from the Maryland dataset [26]
 158 previously utilized in [10, 27]. This semi-artificial dataset includes the silhouette and appearance
 159 of the HH extracted randomly from images with varying orientations sourced from public datasets.
 160 Additionally, selected random backgrounds were combined with the HH images, and various image
 161 transformations (such as scale, rotation, translation, and photometric distortions) were applied,
 162 similar to those described in [24].

Table 1: Experimental results (*precision* among all the classes) on different testing datasets, as reported in [9].

Dataset	P
hh_unimore_rgb_lab-images_july2021_scaled	0.97
2021-09-01-by-smartphone_scaled	0.79
farmer_scaled	0.82
drone-camera_2021-08-30_scaled	0.28
drone-camera_2021-08-31_scaled	0.36
drone-camera_2021-09-01_scaled	0.30
drone-camera_2021-09-03_scaled	0.32

163 At the end of the process, the number of artificial images so created was 8,880 generated
 164 starting from 221 backgrounds, and 105 silhouettes of the HH. By folklore, this size is considered
 165 suitable for detection of medium objects. After training CenterNet on the semi-artificial dataset,
 166 it was subsequently tested on various other datasets whose results are reported in Table 1 [9].
 167 The results indicate that the precision (P) is high for images captured with smartphones and even
 168 better for images obtained from professional cameras in the laboratory. However, the performance
 169 is considerably lower when using images taken with the drone. Although one could be tempted
 170 to brutally ascribe the poor results to the low resolution of the drone images, we know that a
 171 careful analysis of the optics’ properties of the DJI Zenmuse H20 camera (the one attached to the
 172 DJI Matrice 300 in the HALY.ID project) has been conducted before taking the photos, and the
 173 parameters (such as focal length, distance from the subject) were selected so as the resolution is
 174 suitable to detect the HH features [9]. Namely, when observed with the naked eye, the images
 175 taken by the drone generally appear good, and even excellent in the portion of the photo where the
 176 bugs reside. Hence, we suspect that the decline in performance is primarily due to the disparity
 177 between the training and testing datasets. In fact, the training dataset comprises silhouettes on

178 artificial backgrounds (see Figure 1a), whereas the testing dataset consists of actual bugs moving
179 on leaves, branches, and pears (see Figure 1b).

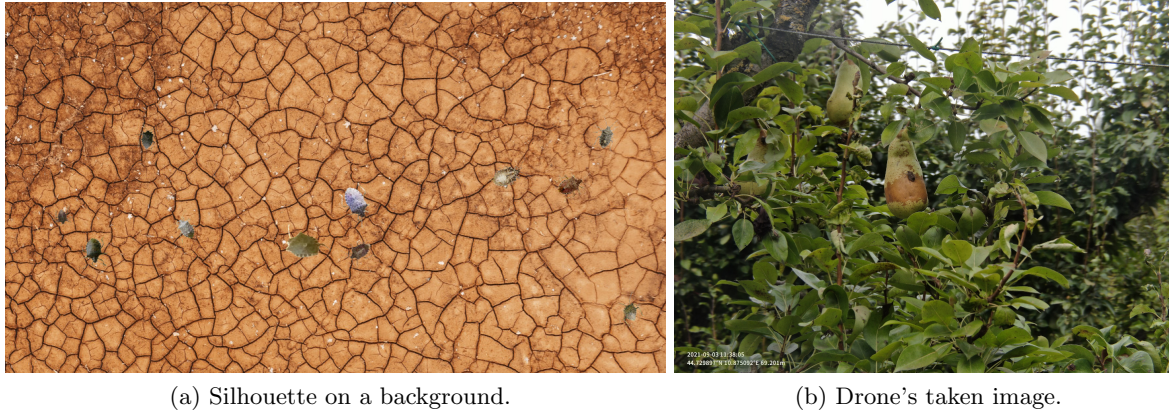


Figure 1: The training dataset.

180 In conclusion, considering the disparity in results between [9] and [25, 10], we attribute the
181 variations in performance to the neural network employed and the fact that [25, 10] utilize the
182 same type of images for both training and testing. Therefore, in this paper, we propose the
183 utilization of in-field images taken by the DJI Matrice 300 drone or other digital devices not only
184 for testing, but also for training.

185 To ensure confidence in the image quality and evaluate it, we assess the blurriness and bright-
186 ness using metrics proposed in the literature. Specifically, we employ the no-reference blurring
187 metric proposed in [31] and the brightness metric proposed by the International Commission on
188 Illumination Laboratory (CIELAB) [32]. Furthermore, we decide to employ YOLO as the object
189 detector due to its excellent performance as demonstrated in [10] for HH detection in an artificial
190 dataset. It is worth noting that YOLO is renowned for its suitability in real-time detection, which
191 aligns with the future extension requirements of our project [33].

192 In the following section, we will present and explain the process we undertook to create the
193 dataset utilized for the recognition of HH in the field.

194 3. Created Dataset

195 In this section, we present the dataset that we created for our study. We begin by explaining
196 the composition of the dataset in Section 3.1. The dataset primarily consists of in-field and real-

197 world images captured in the orchard using various devices, including the DJI Matrice 300 drone,
198 smartphones, and professional cameras. Notice that the collected images not only contain speci-
199 mens of HH, but also specimens of the other native stink bug called *Nezara viridula* (briefly, NV).
200 Furthermore, in Section 3.2 we investigate the blurriness and brightness of the selected images to
201 objectively evaluate their quality. Since the dataset was curated by a human operator from the
202 overall acquired images, this assessment provides valuable insights. Additionally, in Section 3.3 we
203 examine the size of the bugs in the images, as this factor plays a crucial role in the labeling pro-
204 cedure. A suitable labeling is essential for the subsequent development of computer vision models,
205 which we discuss in Section 4.

206 3.1. Dataset Composition

207 One of the primary goals of the HALY.ID project was to develop a comprehensive and col-
208 laborative dataset of in-field images containing stink bugs. This dataset would serve as a valuable
209 resource for computer vision algorithms to effectively identify the presence of the bugs in orchards.

210 During the summer campaign of the project in 2021², we acquired a total of 1,234 images.
211 Figure 2 shows a few examples of the collected images. Specifically, we captured a total of 855
212 images using a drone-based automated protocol (see Figure 2a) in a pear orchard located in Carpi,
213 Italy [34, 35]. Additionally, we took 299 images in the same orchards at different times of the day
214 using various digital devices (see Figure 2b) such as smartphones and digital/professional cameras.
215 These images were taken under different lighting conditions, including morning and afternoon.
216 Furthermore, we obtained 80 images of live bugs in a laboratory setting (see Figure 2c). Overall,
217 these 1,234 images were collected for the HALY.ID project. Finally, to ensure completeness, we
218 downloaded additional 34 high-quality images from the Internet (see Figure 2d), sourcing them
219 from other available datasets, preexisting the HALY.ID project. As a result, our initial dataset
220 consisted of a total of 1,268 images. Among the 855 pictures taken by the drone, we discovered
221 the presence of bugs in only 653 of them. Furthermore, out of the 299 images taken in the field
222 by other devices, we identified bugs in 274 of them. So, the actual number of images that contain
223 at least one specimen of bugs is $(653 + 274)$ (i.e., 89%) from the orchard and $80 + 34 = 114$ (i.e.,
224 11%) from the laboratory or external datasets.

²This study is limited to the project’s campaign 2021.



(a) In-field image with drone.



(b) In-field image with smartphone.



(c) Laboratory image.



(d) Maryland dataset image.

Figure 2: An example of image for each category.

225 We anticipate that several images were excluded from the dataset due to low quality issues.
226 So, the final dataset has 677 images, out of which 83% were captured in the orchard, 12% in the
227 laboratory, and 5% from other dataset in Internet.

228 The drone’s images have been captured by leveraging the DJI Zenmuse H20 camera mounted
229 as a payload on the DJI Matrice 300 drone, hovering at the height of 1.5-2 m above the ground. We
230 took the images of the stink bugs from distances ranging between 3-4 m, resulting in diagonal angles
231 of view ranging from 24-18°. We chose these parameters to ensure a resolution of 0.2 mm which
232 guarantees to identify the features that characterize the HH, in particular the characteristic white-
233 and-black antennas and the connexivum (see Figure 3). To meet the aforementioned conditions,
234 considering the diagonal length of the DJI Zenmuse H20 chip as 9.60 mm and 6,483 pixels [9], the
235 images captured by the DJI Matrice 300 must have a diagonal field of view no greater than 1.3 m.
236 As a result, the above distances and focal lengths have been determined.

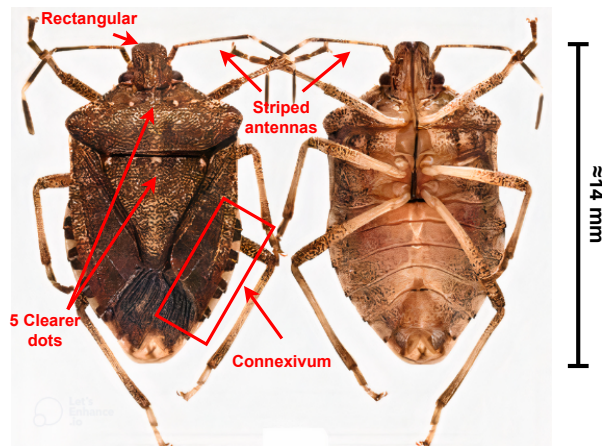


Figure 3: HH and its distinctive features.

237 As aforementioned, the created dataset contains two classes of stink bugs: the invasive species,
238 *Halyomorpha halys* (HH), and the most common stink bug in Italian orchards, *Nezara viridula*
239 (NV), as shown in Figure 4. The HH and NV are quite different. From our dataset consisting of
240 677 images, there are 1,803 actual distinct instances of bugs, divided in 1,502 HH and 301 NV
241 specimens. So, the scope of our algorithm is not only to detect a “stink bug”, but also to classify
242 it as either a HH or a NV. Although the classification is not a trivial task, the localization and
243 detection of the bugs is definitely an even more challenging task.



Figure 4: Three Pentatomidae stink bugs: *Halysomorpha halys* (HH, left), *Nezara viridula* (NV, center), and *Rhapsigaster nebulosa* (RN, right, never observed in the monitored orchard).

244 *3.2. Evaluation of Blurriness and Brightness*

245 As previously mentioned, the constructed dataset is heterogeneous as it has been assembled
 246 from diverse sources. Consequently, there is a significant amount of variability in the image quality,
 247 including variations in resolutions, aspect ratios, and other factors that could represent a bias for
 248 the computer vision algorithms, such as non-optimal blurriness and brightness [9].

249 Regarding the *blurriness*, some of the images taken during the drone’s flight are out of focus
 250 due to the camera’s auto-focusing mechanism. It is worthy to point out that the DJI Zenmuse
 251 H20 camera attached to our drone, although it is equipped with the zoom ability, is a compact
 252 camera born to work with a wide focal length to capture large landscapes. When capturing images
 253 at large distances, unexpected changes in distance have relatively less impact on the auto-focus
 254 performance. However, when shooting at small distances, there is a possibility that the camera may
 255 fail to accurately focus at the intended distance, leading to out-of-focus images. For example, the
 256 irregular shape of the trees, including unpruned branches, can mislead the auto-focus mechanism,
 257 resulting in a sharp image focus on an insignificant branch, while the desired subject results blurred.

258 Regarding the *brightness*, we have observed the presence of certain pictures with excessive
 259 exposure in certain areas or even throughout the entire image. This issue is likely attributable
 260 to the fact that the majority of the images have been captured during the peak hours of the day
 261 (late morning and early afternoon) in summer, when the sun is at its brightest. Additionally, it is
 262 not uncommon for the shadows created by the trees to cause an imbalanced distribution of light,
 263 resulting in excessive contrast along the edges of the image.

264 With the purpose of avoiding biased training, a preliminary operator screening procedure has

265 been applied. Specifically, an expert human operator has inspected one image at a time estimating
 266 different quality indicators before the labeling phase, e.g., the focus around the target, the bright-
 267 ness balancing, the amount of pixels that characterize the stink bug, and so on. As previously said,
 268 677 images have been selected. However, because the selection process used during the screening
 269 phase is operator-dependent, we have chosen to validate our selection phase by utilizing established
 270 no-reference estimators from the literature for both blurriness [31] and perceived brightness [32].

271 Figure 5 illustrates an analysis of the images in the dataset in terms of blurriness and perceived
 272 brightness according to the acquisition source. In detail, on the x -axis we list the blurriness scores,
 273 while the brightness scores are represented on the y -axis. The blurriness-metric is a score in the
 274 range $[0, 1]$: 0 represents blurred image, whereas 1 very sharp image. In other words, a sharpen
 275 image is represented by a high blurriness-metric score, whereas a low blurriness-metric score implies
 276 image blurred. Similarly, the brightness-metric is a score in the range $[0, 1]$: 0 represents perception
 277 of light absents, whereas 1 means dazzling light. Hence, the images with the best metrics (blurriness
 278 tends to 1, brightness tends to 0.5) will stay in the central right column of the plots.

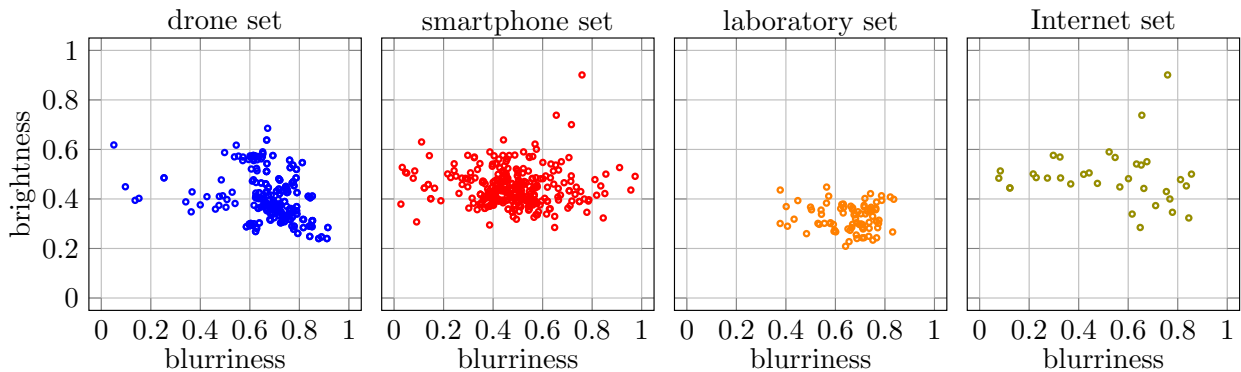


Figure 5: Dataset evaluation on blurriness, and perceived brightness for each acquisition source.

279 In principle, the laboratory image set (Figure 2c) is the most uniform according the two metrics.
 280 This is due to the fact that the images were taken in a light controlled environment, and maintaining
 281 a fixed view of the target.

282 The drone image set (Figure 2a) reports higher values of brightness than the laboratory image
 283 set because the images have been taken outside. Nonetheless, we notice that overall the dots
 284 (images) are clustered together in a limited area with a few outliers due to the blurriness score.
 285 The clustered blurriness behavior can be attributed to the fact that the images have been shot

286 under similar distance and focal length conditions. On the other hand, the presence of a few present
 287 outliers can be attributed to the fact that when the drone takes a photo, as explained before, the
 288 auto-focus can be misled. However, as previously discussed, the target specimens are still clearly
 289 visible in the selected images.

290 A separate analysis is required for both the smartphone and Internet sets. Regarding to the
 291 smartphone set (Figure 2b), it exhibits the largest variance among blurriness scores. This is
 292 because the set comprises images taken by different operators, mainly farmers that helped in
 293 collecting images, using different devices, each equipped with diverse image sensors. Moreover,
 294 differently from the images collected with the DJI Matrice 300, no specific programmatic policy
 295 governed the image capture process. As for the Internet set (Figure 2d), it exclusively contains
 296 macro photos. In this case, the stink bug specimen occupies a significant portion of the image and
 297 is the only element in focus. The low blurriness scores in this set occur when the stink bug occupies
 298 a limited area within the image. This is the only set that has quite high values for brightness,
 299 which seem to depend on the prevalence of white inside the picture. For example, the image with
 300 the highest brightness 0.91 score is a macro photo where a HH lays on a white wall. No image has
 301 brightness-score below 0.15 (i.e., an estimated score which establishes an “underexposed” image).

Table 2: Dataset analysis and composition. The average (avg) is among all the pictures.

Set	num.	blurriness			brightness			perc.
		avg	min	max	avg	min	max	
Drone	289	0.69	0.05	0.92	0.40	0.24	0.69	43%
Smartphone	274	0.48	0.03	0.84	0.44	0.28	0.90	40%
Laboratory	80	0.66	0.38	0.84	0.33	0.21	0.45	12%
Maryland Dataset	34	0.49	0.10	0.86	0.52	0.28	0.91	5%
Total	677							100%

302 In conclusion, as summarized in Table 2, the drone image set offers on average good quality,
 303 also in comparison with the other image sets. Its performance validates the parameters that we
 304 set using the DJI Matrice 300. Furthermore, the operator selection process has resulted in a
 305 satisfactory dataset of images, considering the available quantity.

306 Overall, the dataset demonstrates minimal issues related to brightness and blurriness. Nev-
 307 ertheless, we conducted a further investigation that involves the YOLO neural network to assess
 308 with more certainty the impact of blurriness on our dataset. We construct, as described in Sec-
 309 tion 4, three distinct training sets, called RAND, BEST, and WORST, based on the blur scores. We

310 train the YOLO models using each of these sets to gauge the impact of blurriness on the learning
311 capability of the YOLO models. Subsequently, we evaluate the three trained models on the same
312 test set. It appears that no one of the three training sets dominates the others. As demonstrated
313 in the experiment discussed in Section 4.6, blurriness can be a limiting factor. However, based on
314 this assessment, we can conclude that the level of blurriness in the created dataset is not critical.

315 3.3. Bug Size Analysis and Labeling Phase

316 The consequent labeling procedure, performed to allow the training of computer vision models,
317 has been done through the well-known open-source software called `make-sense` [36]. We decided
318 to draw bounding boxes including the antennae, the paws of the bug, as well as the body so as
319 not to lose any HH feature. Indeed, the acquired experience concerning the resolution with the
320 employed devices (DJI Zenmuse H20 and other smartphones) permitted us to recognize all the
321 features previously detailed in Figure 3.

322 In Figure 6 (first row), we provide insights into the size distribution of the different bounding
323 boxes for the two stink bug classes. The x -axis represents the width in pixels, while the y -axis
324 represents the height in pixels of the drawn bounding boxes for each set of pictures. In Figure 6
325 (second row), we illustrate the distribution of the bounding box positions relative to the examined
326 pictures. Essentially, these plots display the center position of each bounding box as a percentage
327 with respect to the width and height of the picture. So, on each x -axis and y -axis, we depict the x
328 coordinate and y coordinate of the bounding box center, respectively, as a percentage relative to the
329 maximum x and y coordinates of the image. Furthermore, the analysis categorizes the information
330 from the bounding boxes based on the adopted source of acquisition. The sources include drone,
331 smartphone/professional camera, laboratory, and the Maryland (Internet) image set.

332 Concerning the size distribution in Figure 6 (first row), as said before, the built dataset is
333 heterogeneous since we have used pictures taken by the drone, by the farmers, by the entomologists,
334 and images obtained from the Internet. Not surprisingly, the sizes of the pictures we have (in pixels)
335 directly impact the detection of stink bugs, as well as the accuracy of determining their size and
336 position, along with other distinctive features. As a consequence, the dimension of the HH varies
337 from, approximately, 30×30 px to 1000×1000 px. Differently, the NV samples have a limited
338 bug size variance. Notice that the majority of images, i.e., 97% of instances, which contain NV
339 have been taken using the drone, and the remaining 3% using smartphone cameras. However,

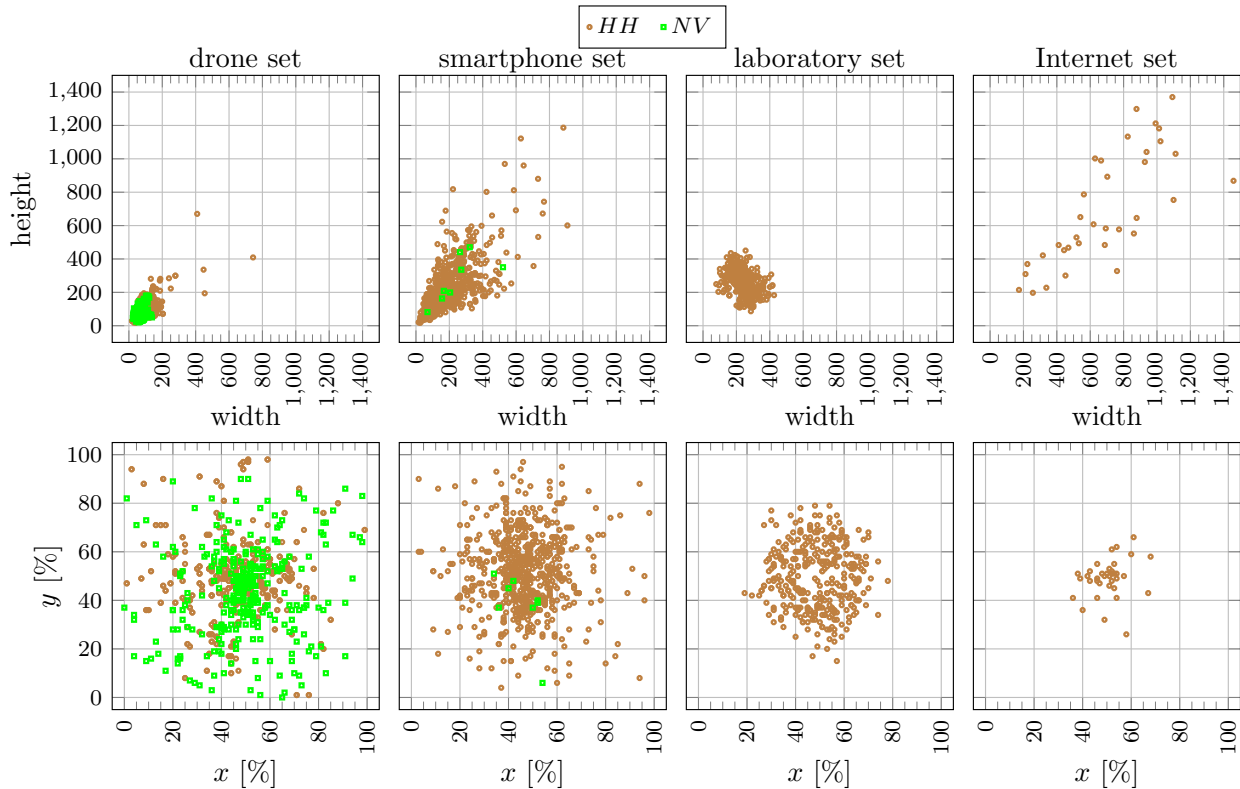


Figure 6: Bounding boxes analysis.

340 although there is a large variance in the bug size, the vast majority of the bug instances, i.e., more
 341 than 50% of instances, are in the range of 200×200 px. This is because 289 of 677 (total) images
 342 have been taken by the drone with a strictly configured setting. When examining images within
 343 a single category, it is evident that the drone set exhibits the smallest bounding boxes and the
 344 least variability in size. This observation is particularly true when considering only the NV class.
 345 Considering the smartphone set of images, we note a larger variability in the size, with bounding
 346 box sizes up to 1200×900 px. We also find that the largest NV instances are in this particular set.
 347 However, we can note that the more is the bounding box size, the more rarefied are the instances
 348 in the plot. The huge variability in the acquisition devices' image sensor characterizes the way
 349 how bounding boxes components spread inside the plots. Differently, the laboratory set contains
 350 bounding boxes which are extremely similar with respect to their side sizes. As we can evaluate
 351 in the example of Figure 2c, the bugs are placed on a disc with some underneath leaves, and the
 352 image is completely focused on them. Therefore, the few differences in the size depend on the
 353 poses of the bug, and the amount of occlusion duty to the handcrafted background. Finally, taking

354 under consideration the images downloaded from the Internet, we observe that this set contains the
355 largest bounding boxes of the built dataset regarding the HH. Indeed, this tiny set is characterized
356 by high resolution macro images, where the bug represents the target of the shot.

357 Concerning the position distribution in Figure 6 (second row), differently from what we stated
358 for the bounding box sizes, the drone set highlights a strong variability for bug positions for both
359 the classes. In fact, even if the majority of the bugs approximately reside in the center of the
360 images, there are some instances whose bounding boxes are located at the borders of the image.
361 This behavior can be attributed to the strict acquisition strategy employed by the drone. Since
362 the position of the bugs in the orchard, especially on the trees, is unpredictable, the drone images
363 capture a wider range of bug sizes and positions. A similar behavior is exhibited for the smartphone
364 set, where the bounding box positions span over the entire surface of the images. We affirm that it
365 is a predictable behavior because, as mentioned before, this set is built using the most diverse image
366 sensors of the dataset. To conclude, both the laboratory and the Internet sets are characterized
367 by a very stable positioning of the bugs. Indeed, in both the sets the bugs approximately cover
368 the center of the image. The differences observed in the laboratory set can be attributed to the
369 circular placement of bugs on a disc by hand. On the other hand, in the Internet set, macro photos
370 typically center the target (stink bug) in the middle of the picture (see Figure 2d).

371 In the next section, we evaluate our computer vision algorithms from the created dataset in
372 order to detect the stink bugs.

373 **4. Evaluation of the Localization and Detection of the Bug**

374 In this section, we detail and discuss the setup and results of our conducted experiments from
375 the created dataset. We start by giving an overview of the used computer vision algorithms and
376 tools (Section 4.1) as well as the adopted metrics for the comparison (Section 4.2). We describe
377 the training configuration phase in Section 4.3. We thoroughly compare and analyze first the
378 training and validation results in Section 4.4, and then the testing results in Section 4.5, obtained
379 from different models. Finally, we evaluate the impact of the blurriness on the previous results
380 (Section 4.6).

381 4.1. Algorithms and Tools

382 Here, we briefly recap the YOLO algorithm giving an insight of its working process, and the
383 well-known strategy of the *Transfer learning* (TL) that we used to identify the stink bugs.

384 The YOLO algorithm [28], the fifth version of the well-know YOLO (You Only Look Once)
385 firstly introduced in [37], is a deep learning-based architecture based on the PyTorch framework
386 that is used to conduct this experiment. The main innovation of this family of algorithms is framing
387 the object detection problem as a regression problem instead of a classification task by spatially
388 separating bounding boxes and associating probabilities to each of the detected images using a
389 single CNN. YOLO is lightweight and fast, and also needs much less computational capabilities
390 than the other current state-of-the-art architecture models while keeping the performance near to
391 them [28]. In particular, it can process images at 45 frames per second, so making YOLO suitable
392 for performing the detection of the bug directly on an edge-computing device possibly embedded
393 in the drone itself.

394 Furthermore, since we have a limited amount of images and limited computational power, we
395 decided to perform the training phase either from scratch or by using the TL paradigm [38]. When
396 training a computer vision model, the TL gives the possibility to reuse aspects of a computer vision
397 algorithm already trained in depth on a huge amount of images for a new model for which far less
398 images are available. The process takes relevant parts of the existing ML model and transfer
399 them to solve a new, possibly similar, problem. Hence, a key part of TL is the generalization.
400 This means that only the knowledge that can be used by another model in different scenarios or
401 conditions, is transferred. Instead of models being rigidly tied to a training dataset from scratch,
402 models trained using TL will be more generalized. Models developed in this way can be utilized
403 in changing conditions and with different datasets.

404 4.2. Adopted Metrics

405 Let us review a few definitions before going in depth with our results. As explained before,
406 YOLO detects the stink bug by returning a *prediction box* B_p , and the consequent labeling asso-
407 ciates to each bug a *ground truth box* B_{gt} . For each B_p and B_{gt} , the IoU is defined as the ratio
408 between the intersection area between B_p and B_{gt} , and the union area between B_p and B_{gt} , i.e.,
409 $\text{IoU} = \frac{\mathcal{A}(B_p \cap B_{gt})}{\mathcal{A}(B_p \cup B_{gt})}$, where \mathcal{A} represents the area function. A *detection box* is considered a prediction
410 box if the IoU is above a threshold τ . If not differently stated, we assume $\tau = 0.5$. We define:

- 411 1. **True Positive** (T_P): A correct detection, i.e., a detection with $\text{IoU} \geq \tau$ and object class
 412 identified.
- 413 2. **False Positive** (F_P): A wrong detection (i.e., $B_p \neq 0$) and detection with $\text{IoU} < \tau$. Note
 414 that this includes the case of no-overlap with a B_{gt} (Region of Interest equals to B_{gt}). Namely,
 415 if $B_{gt} = 0$, we have $\text{IoU} = 0$.
- 416 3. **False Negative** (F_N): A ground truth not detected, i.e., missed detection $B_p = 0$. Since
 417 $B_{gt} > 0$, it holds that $B_p \cup B_{gt} > 0$.

418 Note that, since $B_{gt} \cup B_p \neq 0$, the IoU is always correctly defined.

419 Once again, our experiments consider two stink bug classes: HH and NV. We measure the
 420 performance on the test set for each class, as well as for the combined performance of the two
 421 classes, by considering four metrics. Concerning the first two, we have precision (P) and recall
 422 (R), computed as follows:

$$P = \frac{T_P}{T_P + F_P}, \quad R = \frac{T_P}{T_P + F_N}, \quad (1)$$

423 where T_P , F_P , and F_N are computed by fixing $\tau = 0.5$. Note that $T_P + F_N$ at the denominator
 424 of R is the number of stink bugs, i.e., the number of ground truth boxes computed during the
 425 labeling process. Precisely, when R refers to HH (respectively, NV), $T_P + F_N$ is the number of HH
 426 (respectively, NV) found in the training set. When R refers to all classes, $T_P + F_N$ is the number
 427 of $\text{HH} \cup \text{NV}$ found in the training set.

428 Furthermore, we compute the mean AP $m_{0.5}$ (Pascal VOC challenge [39]) also known as
 429 $mAP[0.5]$, and $m_{0.95}$ (MS COCO challenge [40]) metrics, also known as $mAP[0.5 : 0.05 : 0.95]$.
 430 These metrics refine the T_P and F_P definitions by using the *confidence* parameter γ , i.e., a likelihood
 431 value returned by the network. Specifically:

- 432 1. **True Positive** (T_P): A correct detection, i.e., a detection with $\text{IoU} \geq \tau$, given that $\gamma \geq \tau_\gamma$.
- 433 2. **False Positive** (F_P): A wrong detection, i.e., a detection with $\text{IoU} < \tau$, given that $\gamma \geq \tau_\gamma$.

434 To compute the m_τ metric with $\tau = 0.5$, denoted as $m_{0.5}$, the precision and recall values are
 435 computed with the IoU threshold $\tau \geq 0.5$ and varying the confidence threshold τ_γ . For each
 436 considered confidence threshold τ_γ , only the prediction boxes that satisfy $\gamma \geq \tau_\gamma$ are considered.
 437 Then, among such images, the values T_P and F_P are determined based on the IoU condition.

438 Consequently, the relative precision and recall values are recomputed. Then, a curve is built by
439 plotting for each value of the recall (on the x -axis) the corresponding precision value on the y -
440 axis and the approximated area of such a curve is returned as the mean average precision value
441 $m_{0.5}$. The term “average” comes to the fact that the area of the curve refers to several values
442 of confidence values. Note that when τ_γ decreases, the recall score cannot decrease because the
443 T_P cannot decrease and the denominator (ground truth) remains the same; while the behavior of
444 precision is not predictable because both T_P and F_P cannot decrease, no claims can be made about
445 the recall ratio.

446 Later on, in our discussion, we say that an object detector is *confidence-robust* if the precision
447 is little affected by the variations of the confidence level. If that is the case, it means that all the
448 prediction boxes have a high confidence level, and the precision level remains almost constant. In
449 other words, an object detector is robust if the m_τ score with $\tau = 0.5$, i.e., $m_{0.5}$ and the P value,
450 are close. The $m_{0.95}$ metric repeats the computation of m_τ by changing τ between $0.5 \leq \tau \leq 0.95$,
451 with steps of 0.05; and returns the average of all the computed values m_τ . From now on, we say
452 that the detector is *IoU-robust* if the average precision is little affected by the IoU variations. If
453 that is the case, the actual IoU value of the prediction boxes is high (close to 1) for all the images.
454 Hence, if the object detector is IoU-robust, the $m_{0.95}$ and $m_{0.5}$ scores are close.

455 In the following, we explain how to train our neural networks based on the YOLO models. We
456 work with three different training sets to demonstrate the satisfactory quality of the images, i.e.,
457 the minimum impact of blurriness issues on our dataset, as anticipated in Section 3.2.

458 4.3. Configuration of the Object Detectors

459 In this section, we explain how we built the neural networks based on the YOLO models.
460 Before testing the computer vision algorithms, a suitable training phase of the networks is required
461 utilizing the created dataset of pictures. To accomplish this, the entire dataset has been divided
462 into two parts: a *testing* set of 135, and the remaining 542 images, corresponding, respectively, to
463 the 20% and 80% of the dataset.

464 For three times, the 542 images have been then partitioned into two sets: a training set con-
465 sisting of the 407 (i.e., 60%) the images, and a validation set consisting of the remaining 135 (i.e.,
466 20%) images. In fact, in order to investigate the claim that “the less blur an image has, the more
467 accurate the prediction will be” [9], the 542 images have been organized as three distinct training

468 and validation sets based on a blurriness score [31]. Specifically, the least 407 blurred images are
 469 selected and denoted as the BEST training group. Similarly, the WORST training group consists of
 470 the most 407 blurred images. Finally, a RAND training group of 407 images randomly selected is
 471 simply assembled. Then, for each RAND, BEST, and WORST group, it is created a corresponding
 472 validation set using the remaining 135 unselected images. These three groups will be used to train
 473 different object detectors, as explained below.

474 In order to extend the number of samples for the models, we performed an *augmentation*
 475 *phase*. Specifically, for each image of the group training set, three new images obtained by random
 476 transformations are also included. The extended set contains different transformations such as
 477 image hue, saturation, and value (HSV) augmentation, translation, scale, flipping, and mosaic. By
 478 performing this augmentation, the total number of training samples increased from 407 to 1,628.
 479 In order to implement this, we employed the augmentation techniques recently proposed in the
 480 YOLO’s library [28] which applies random on-the-fly transformations during the training epochs.
 481 Figure 7 shows an example of three different transformations, where a combination of mosaic
 482 enhancement and HSV-saturation (left), scale-in and transformation (middle), and combination
 483 of mosaic enhancement and scale-out (right), are shown. Since different images differ for their
 484 size, and since that TL uses weights obtained from the COCO dataset [41] which is composed by
 485 pictures with a size of 640×640 px, we decided to scale down all the pictures to this particular
 486 value. This process is divided into two sub-phases: initially, the images are cropped in a square
 487 shaped eventually padded with white color, and subsequently scaled down to the fixed side length
 488 of 640 px without losing the original ratios.

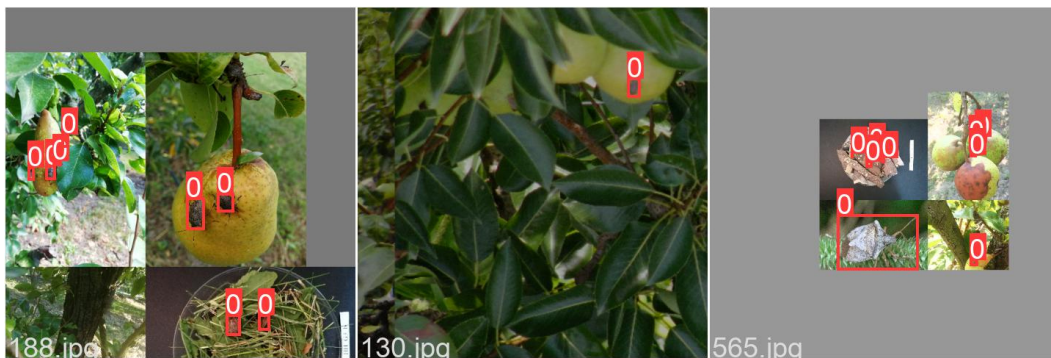


Figure 7: Example of image augmentation.

489 Each augmented training group will be used to validate and train an object detector based

490 on a YOLO model. Specifically, we trained the following versions of YOLO, namely, small (\mathcal{S}),
 491 medium (\mathcal{M}), and extra large (\mathcal{X}). Each YOLO model has been trained and evaluated using an
 492 NVIDIA Tesla V100 with 16 GB of VRAM, provided by Google Colab. Furthermore, the models
 493 are trained by exploiting the pre-trained weights of COCO dataset, thus implementing the TL.
 494 We trained each model by setting a few parameters³ such as batches with 32 pictures, 200 epochs,
 495 learning rate equals to 10^{-2} , SGD optimizer [42], and image size of 640×640 pixels. Section 4.4
 496 displays the training results. Finally, nine object detectors are obtained because the \mathcal{S} , \mathcal{M} , and \mathcal{X}
 497 YOLO models are trained with the three RAND, BEST, and WORST groups with TL mechanism.

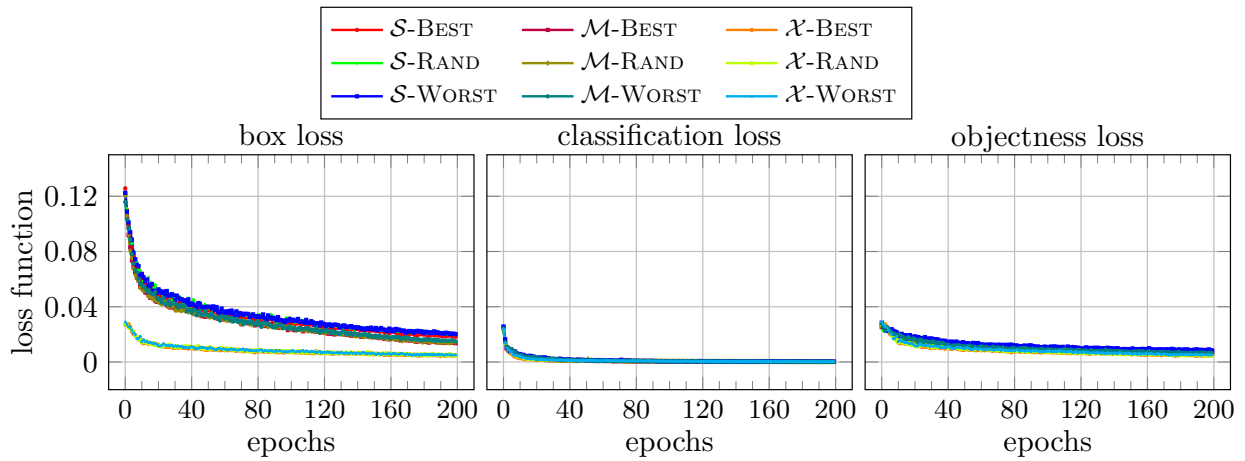
498 4.4. Training and Validation Results

499 In this section, we evaluate the training the validation performance among the three afore-
 500 mentioned groups, i.e., RAND (random selection), and BEST and WORST (informed selection).
 501 Specifically, in Figure 8 we report the training and validation performance of the resulting YOLO
 502 models. For all the models and for all the training splits, Figure 8a reports the training perfor-
 503 mance in terms of loss functions, while Figure 8b reports the specific metrics used for the validation
 504 performance (i.e., P , R , and $m_{0.5}$). These are reported on the y -axis. Moreover, each plot shows
 505 the epochs on the x -axis.

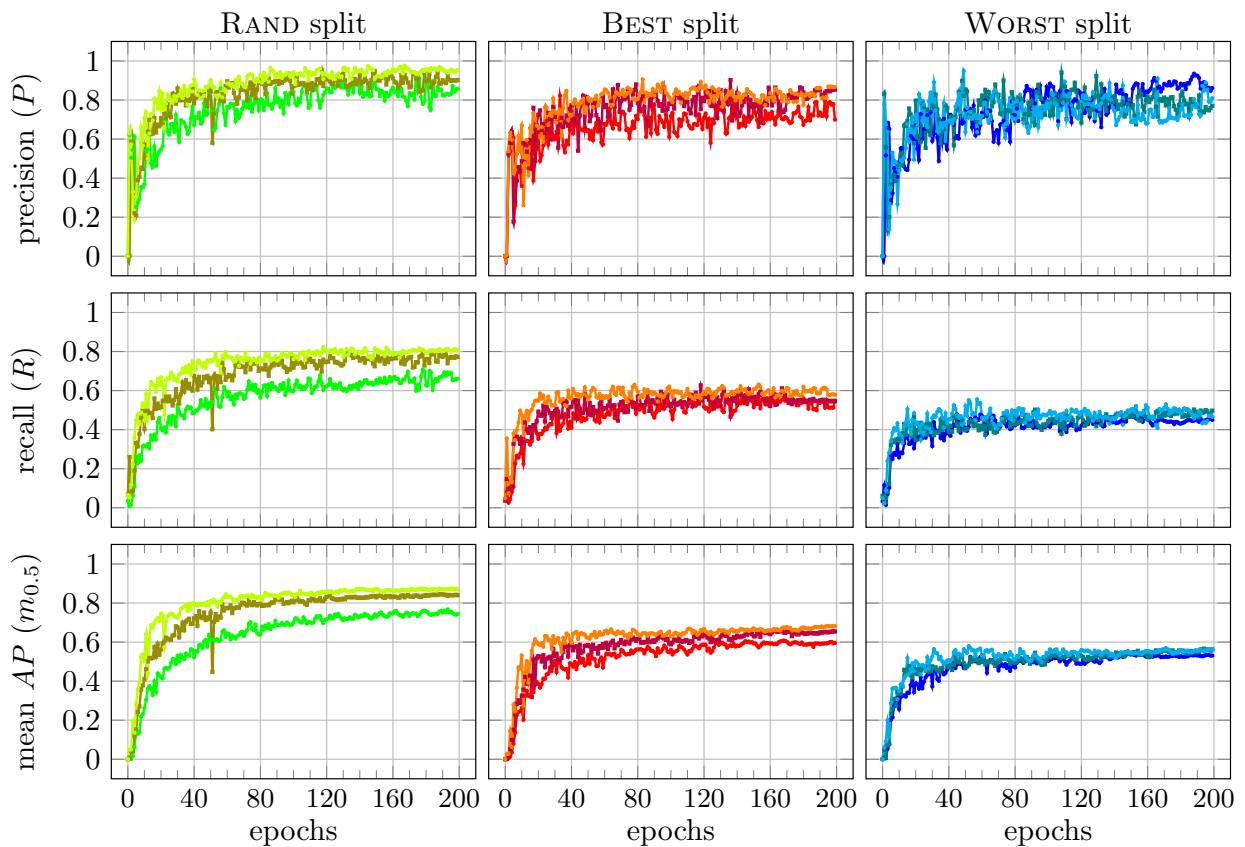
506 Concerning Figure 8a, in each of the three plots nine curves are shown: one curve for each
 507 combination of training split (RAND, BEST, WORST) and YOLO model (\mathcal{S} , \mathcal{M} , \mathcal{X}). The first plot
 508 reports the *box loss*, namely the function which establishes how well the model guesses bounding
 509 boxes coordinates. We observe that the models converge to a loss close to 0 fairly quickly. All
 510 the three training groups converge faster when the \mathcal{X} model is used. The *classification loss*, which
 511 measures how well the model distinguishes between different classes, and the *objectness loss*, which
 512 is roughly speaking the confidence that some object exists in a given box, rapidly converge for
 513 all the models and all the groups. One can notice that the objectness loss, although it reaches a
 514 plateau, remains slightly higher than 0.

515 Focusing on Figure 8b, the three rows report the *precision*, *recall*, and *mean AP* achieved by
 516 the YOLO models during the validation phase (see Eq. (1)). The first column depicts the results
 517 of the three models trained on the RAND split, while the central and the last columns show the
 518 results for the BEST and the WORST split, respectively. Notice that the used metrics are values

³For the training parameters, we refer to the YOLO’s yaml file named *hyp.scratch-low* [28].



(a) Loss function results.



(b) Precision, recall, and mean average precision metric results.

Figure 8: Training and validation results using blur score as splitting parameter.

519 averaged on the two classes HH and NV to be recognized. In all the rows, the models trained on
520 the RAND split reach better performance, faster than the models trained on the BEST and WORST
521 splits, where the \mathcal{X} is always the best. While the three groups behaves almost the same for the P
522 metric, the R and $m_{0.5}$ performance of WORST and BEST are worse than those of RAND. The P
523 curves of WORST and RAND fluctuate much more than those of R and $m_{0.5}$.

524 Summarizing, we note that all the models obtain a satisfactory performance with both the
525 loss functions and metrics. Also, they stabilize their trends reaching a plateau in 200 epochs.
526 So, we can state that 200 epochs represent a reasonable trade-off between quality of the solution,
527 and training time. Furthermore, we observe that the models trained on randomly selected images
528 (RAND) reach the best results on all the metrics with a stable and smooth trend. The models
529 trained on the WORST split exhibit the worst performance, while the BEST split allows the models
530 to place in between the RAND and the WORST splits. Finally, focusing on the size of the models,
531 we can notice that the larger is the model, the higher is the score, and this remark is valid for each
532 metrics, and for each split considered.

533 4.5. Testing Results

534 In this section, we finally validate all the YOLO models on the testing set, without applying
535 any transformations.

536 Table 3 reports the results on the testing set achieved by the three different neural networks
537 obtained by training the YOLO models with the three different training splits, i.e., RAND, BEST,
538 and WORST. In general, looking at all the three groups, we can observe that the \mathcal{M} and \mathcal{X} models
539 obtain a performance above 89% for all classes. The R metric scores for the same models varies
540 between 73% and 85%. Both HH and NV classes are recognized with a good balance between P
541 and R . For the HH class and RAND split, P is always above 92%, and hence approximately a tenth
542 of the HH bugs is misclassified. However, R is only above 75%, which indicates that the models
543 tend to miss the HH achieving more F_N . The NV class has higher P than HH, although obtains
544 a worse performance on R . This means that the NV individuals are rarely misclassified, although
545 they are often unrecognized.

546 One can observe that the job is hard. Namely, during our labeling phase we have observed
547 that also expert phytosanitary operators or entomologists sometimes miss the stink bugs on the
548 pictures. Generally, the $m_{0.5}$ of the HH class is higher than that of the NV class, and the difference

Mod.	RAND split											
	HH Class				NV Class				All Classes			
	P	R	$m_{0.5}$	$m_{0.95}$	P	R	$m_{0.5}$	$m_{0.95}$	P	R	$m_{0.5}$	$m_{0.95}$
\mathcal{S}	0.84	0.74	0.80	0.52	0.77	0.66	0.70	0.38	0.80	0.70	0.75	0.45
\mathcal{M}	0.92	0.75	0.85	0.58	0.91	0.77	0.82	0.51	0.92	0.76	0.83	0.55
\mathcal{X}	0.92	0.78	0.85	0.60	0.92	0.79	0.83	0.59	0.92	0.79	0.84	0.60

Mod.	BEST split											
	HH Class				NV Class				All Classes			
	P	R	$m_{0.5}$	$m_{0.95}$	P	R	$m_{0.5}$	$m_{0.95}$	P	R	$m_{0.5}$	$m_{0.95}$
\mathcal{S}	0.77	0.72	0.77	0.48	0.86	0.67	0.72	0.36	0.81	0.69	0.75	0.42
\mathcal{M}	0.90	0.73	0.81	0.56	0.89	0.67	0.72	0.36	0.89	0.73	0.81	0.54
\mathcal{X}	0.98	0.71	0.84	0.59	0.99	0.83	0.86	0.62	0.97	0.77	0.85	0.61

Mod.	WORST split											
	HH Class				NV Class				All Classes			
	P	R	$m_{0.5}$	$m_{0.95}$	P	R	$m_{0.5}$	$m_{0.95}$	P	R	$m_{0.5}$	$m_{0.95}$
\mathcal{S}	0.89	0.74	0.81	0.54	0.80	0.70	0.71	0.38	0.84	0.72	0.76	0.46
\mathcal{M}	0.95	0.73	0.84	0.58	0.94	0.77	0.81	0.52	0.95	0.75	0.82	0.55
\mathcal{X}	0.95	0.77	0.86	0.61	0.95	0.85	0.87	0.60	0.95	0.81	0.86	0.60

Table 3: Results of YOLO models trained on different images.

549 between $m_{0.5}$ and P is smaller for the HH class than for the NV class. This means that the models
550 for the HH class are more confidence-robust than those for the NV class. Instead, the difference
551 between the $m_{0.95}$ from $m_{0.5}$ is high for both the classes. This means that there is a high variations
552 in the IoU size of the prediction boxes.

553 The results on the “ALL Classes” confirm the above results. The models are not IoU-robust
554 because the $m_{0.95}$ and $m_{0.5}$ scores significantly differ. Instead, the models are relatively confidence-
555 robust since the distance between P and $m_{0.5}$ is moderate.

556 Looking at the metrics, there is a dominance of the \mathcal{X} (extra large) model, which confirms the
557 behavior of the training. Namely, concerning the BEST split, it reaches the highest values for P
558 on both the classes HH and NV (98% and 99%, respectively) with the \mathcal{X} model. However, with
559 the same model, the best split reports the worst R scores, except for the NV class. One possible
560 interpretation is that when presented with very sharp images, the model can establish a strong
561 understanding of the distinctive features of stink bugs, and it almost never misclassifies. However,
562 it lacks of flexibility in the decision, and it misses several bugs.

563 The RAND is the set of images that guarantees the most balanced P and R values. This is likely

564 due to the random selection, which enables the networks to train on a more diverse set of samples.
565 As a result, they acquire a higher level of generality that aids in the training process. As regard the
566 WORST set, it surprisingly reaches really good results. In particular, we can observe that results
567 of the \mathcal{S} model dominate those of the \mathcal{S} model with the BEST and RAND sets, but in general there
568 is no dominance. We believe that these results simply confirm that there is not a marked gap
569 between the best and worse samples in our dataset, as proved in the previous Section 3.2). In
570 other words, the quality of our dataset is on average good.

571 In conclusion, we obtained a significant improvement in the results with respect to those re-
572 ported in Table 1 (data from [9]). We attribute this achievement to the quality of our dataset and
573 the fact that both the testing and training sets comprise images captured under similar conditions.
574 In contrast to [9], our dataset does not include images captured in completely different contexts,
575 which contributes to the improved performance.

576 Finally, to further support our assertion that blurring is not a significant issue in our dataset, we
577 propose conducting an examination in the next section where we intentionally introduce a strong
578 level of blurring and evaluate the results on our dataset.

579 *4.6. Impact of Blurriness*

580 The previous experiments, where the three splits were arranged based on their blurriness scores,
581 seem to suggest that the presence of out-of-focus regions within an image does not pose an issue
582 for the detection. This is evident as the results of the WORST split are not significantly different
583 from the BEST split, and overall, the RAND split achieves the best performance. In this section,
584 our objective is to systematically explore the impact of blur by deliberately blurring a certain
585 percentage of photos from a specific split. We begin by introducing a blur effect on 50% of the
586 training and validation samples, and subsequently expand it to 100%. Next, the networks are
587 subsequently retrained using the same parameters, but this time on the transformed set of images.
588 By following this approach, we aim to disprove that increasing levels of blur would paradoxically
589 enhance the detection performance.

590 To achieve appropriately blurred images, we introduce blurriness by convolving each original
591 image with a suitable matrix of size 5×5 [43]. This convolution applies a smoothing effect to the
592 interior ridges using the `cv.blur` function. Figure 9 depicts the impact of this kernel. Specifically,
593 we can observe that the convolution operation produces a resulting image with slightly smoothed

594 contours, effectively simulating an image captured with subtle flickering.



Figure 9: Example of blur kernel effects.

595 As previous mentioned, we repeat the training of the YOLO networks, i.e., \mathcal{S} , \mathcal{M} , and \mathcal{X} , by
596 using transformed training and validation set with increasing percentage of blurred images. For
597 each previously created split, we intentionally introduce blur to 50% and subsequently 100% of the
598 samples. Figure 10 displays the training performance of the RAND split with 50% of the images
599 transformed. Specifically, the first row illustrates the loss functions, namely bounding box loss,
600 classification loss, and objectiveness loss. The second row presents the validation metrics, including
601 precision (P), recall (R), and mean average precision ($m_{0.5}$).

602 Overall, the training behavior of the models on transformed images is similar to what has
603 already been observed in Figure 8. Indeed, as regard to the loss functions, we can basically observe
604 that all of them converge very close to 0 after a few epochs. Furthermore, the \mathcal{X} model demonstrates
605 a tendency to converge faster compared to the other two networks. Conversely, the \mathcal{S} model is
606 the slowest in terms of convergence. When considering the validation performance, we observe a
607 rapid stabilization of all metrics, although each line exhibits some noise in its trend. Consequently,
608 we can conclude that, from a training perspective, the introduction of 50% induced blur does not
609 significantly affect the learning performance of the networks. The behavior remains the same even
610 when more blurred images are introduced. Also the training results of the models trained on 100%
611 blurred images do not display any significant discrepancies. So, we have opted not to plot them.

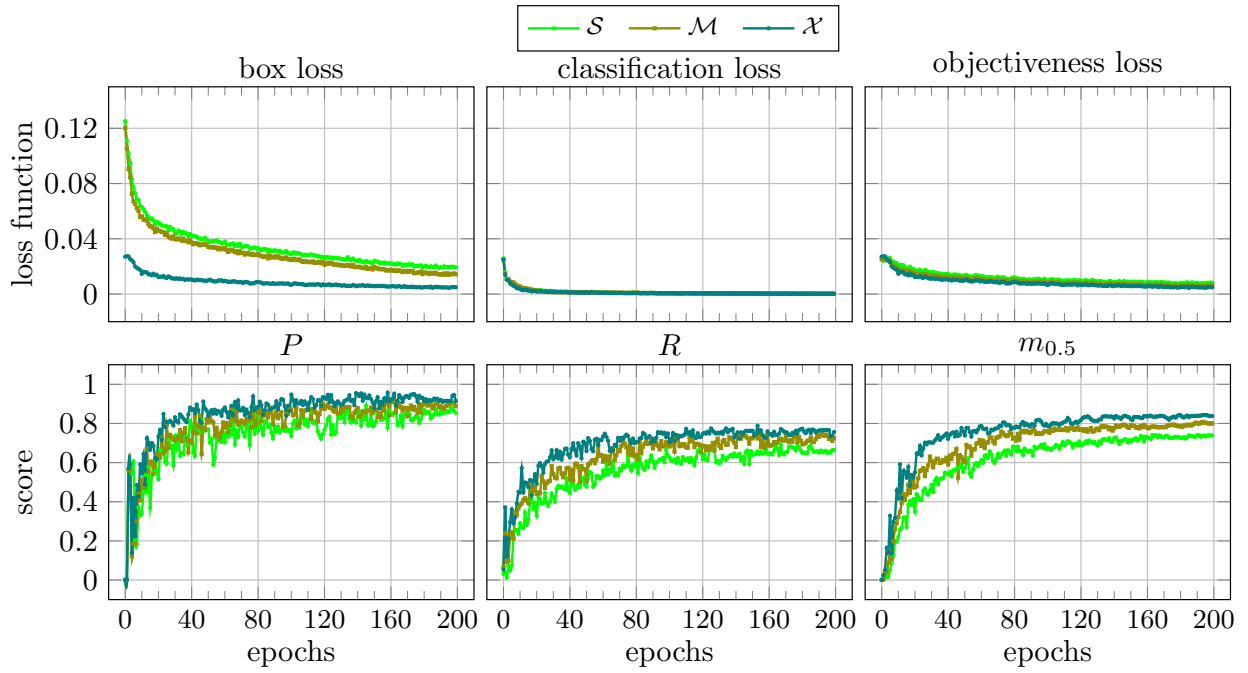


Figure 10: Training results using RAND split with 50% of images convolved with blur kernel.

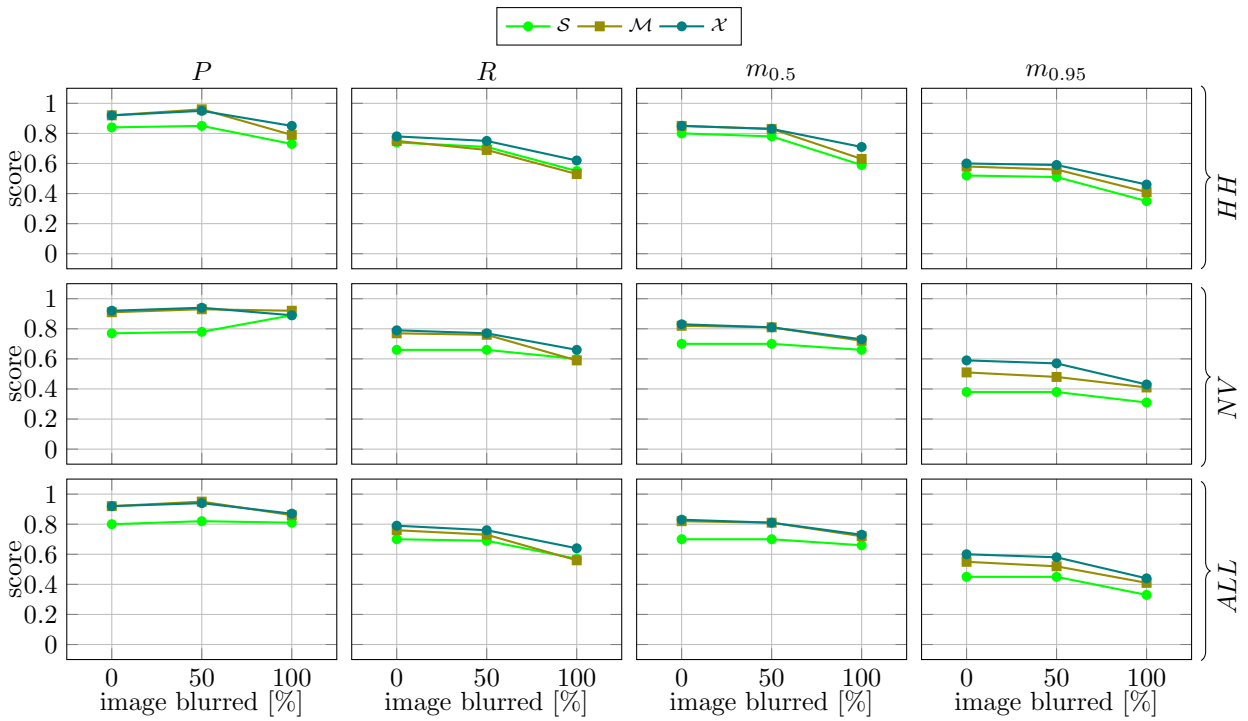


Figure 11: Evaluation of blur impact on YOLO models using RAND split.

612 Figure 11 presents the performance evaluation metrics of the three YOLO networks, considering
613 different percentages of forced blur in the training set with 0%, 50%, and 100% of blurred images.
614 Each row of plots in Figure 11 corresponds to a different group of results, namely HH, NV, and
615 all the classes, respectively. On the other hand, each column represents the evaluation metrics. In
616 each plot, the amount of blur imposed on the training set is fixed on the x -axis, while the y -axis
617 represents the scores obtained by the models.

618 In principle, we can observe that as the percentage of blur increases, the performance of the
619 networks tends to decrease for each model. When analyzing the behavior of the networks based
620 on their size, we find that \mathcal{X} achieves the highest results, while \mathcal{S} demonstrates the lowest perfor-
621 mance, as previously observed. Regarding the precision, all three lines consistently decline as the
622 percentage of blurred images increases, specifically for the HH class. This pattern is also observed
623 in the other rows of the plot. However, we observe the opposite trend for the \mathcal{S} network and the
624 NV class.

625 We observe a significant increase of 1% in precision when using a training set with 100%
626 blurring. Similarly, when the models are trained on a set with 50% blurred images, we observe a
627 smoother, but still noticeable, increase in precision for \mathcal{M} and \mathcal{X} models. This can be attributed
628 to a degradation in recall, causing the models to become more selective in detecting stink bugs.
629 Consequently, they only predict the clearest targets, resulting in a reduction in false positives and
630 an improvement in precision. The recall parameter is the evaluation metric most impacted by
631 blur. For all network sizes, we observe a drop of 2% in recall when using a training set with
632 100% blurring. This behavior is expected since, similar to the human eye, the ability to recognize
633 unclear objects diminishes. When examining the two mean average precision metrics ($m_{0.5}$ and
634 $m_{0.95}$), we observe a consistently decreasing trend, confirming that blurring progressively reduces
635 the recognition capacity of the networks.

636 In summary, the results suggest that blurring has a detrimental effect on the recognition capac-
637 ity of the networks, as indicated by the decreasing trend in all precision metrics. The detrimental
638 effect was not evident in the previous experiments because the WORST set was not enough deteri-
639 orated with respect to the BEST set.

640 **5. Conclusion**

641 In this paper, we have undertaken the study of a system with the ultimate goal of automating
642 the HH pest scouting in orchards by leveraging drones and computer vision algorithms, particularly
643 ML. Our study primarily focused on constructing a suitable dataset of images featuring the HH
644 and enhancing its quality through a preliminary screening process. To capture the images in the
645 field, we carefully selected appropriate hardware, including a vision chip and drone. Subsequently,
646 we proceeded to train and evaluate various ML models based on the YOLO framework, employing
647 different metrics to assess their performance. Additionally, we conducted an in-depth analysis
648 of the captured images, considering factors such as blurriness and brightness, to improve the
649 performance of the ML algorithms. Our results are highly satisfactory and underscore the critical
650 significance of meticulous dataset construction, model training, and image analysis in the successful
651 implementation of ML for HH recognition.

652 Further research and developments are required to complete a fully autonomous orchard mon-
653 itoring, which can be extended to other invasive and emergent pests. To progress towards this
654 goal, several key areas need attention. For instance, the development of a client-server application
655 that leverages the bug-detectors described in this work for real-time detection is crucial. This ap-
656 plication would enhance the practicality and accessibility of the monitoring system. Additionally,
657 integrating bug-detectors with microclimate weather observations to build a HH prediction model
658 holds immense potential. This integration can provide valuable insights into the pest population
659 dynamics, enabling proactive decision-making and pest management strategies. Continued research
660 efforts are essential to identify novel approaches that can complement the existing methods and
661 contribute to more effective IPMs.

662 **References**

- 663 [1] K. Jha, A. Doshi, P. Patel, M. Shah, A comprehensive review on automation in agriculture using artificial
664 intelligence, *Artificial Intelligence in Agriculture 2* (2019) 1–12.
- 665 [2] H. Nagar, R. Sharma, Pest detection on leaf using image processing, in: *2021 International Conference on*
666 *Computer Communication and Informatics (ICCCI)*, IEEE, Virtual, 2021, pp. 1–5.
- 667 [3] M. Lippi, N. Bonucci, et al., A yolo-based pest detection system for precision agriculture, in: *29th Mediterranean*
668 *Conference on Control and Automation (MED)*, IEEE, Virtual, 2021, pp. 342–347.
- 669 [4] J. Martinazzo, S. C. Ballen, J. Steffens, C. Steffens, Sensing of pheromones from euschistus heros (f.) stink bugs
670 by nanosensors, *Sensors and Actuators Reports 4* (2022) 100071.

- 671 [5] A. Kamilaris, F. X. Prenafeta-Boldú, Deep learning in agriculture: A survey, *Computers and electronics in*
672 *agriculture* 147 (2018) 70–90.
- 673 [6] A. L. Nielsen, G. C. Hamilton, Life history of the invasive species *halyomorpha halys* (hemiptera: Pentatomidae)
674 in northeastern united states, *Annals of the Entomological Society of America* 102 (4) (2009) 608–616.
- 675 [7] M. Bariselli, R. Bugiani, L. Maistrello, Distribution and damage caused by *halyomorpha halys* in italy, *Eppo*
676 *Bulletin* 46 (2) (2016) 332–334.
- 677 [8] HALY.ID, Project, <https://www.haly-id.eu> (2022).
- 678 [9] L. Almstedt, et al., Technological innovations in agriculture for scouting *halyomorpha halys* in orchards, in:
679 2023 19th International Conference on Distributed Computing in Sensor Systems (DCOSS), 2023, pp. 1–8.
- 680 [10] A. Sava, L. Ichim, D. Popescu, Detection of *halyomorpha halys* using neural networks, in: 2022 8th International
681 Conference on Control, Decision and Information Technologies (CoDIT), Vol. 1, IEEE, 2022, pp. 437–442.
- 682 [11] Y. Guo, X. Jia, D. Paull, J. Zhang, A. Farooq, X. Chen, M. N. Islam, A drone-based sensing system to support
683 satellite image analysis for rice farm mapping, in: IGARSS 2019 - 2019 IEEE International Geoscience and
684 Remote Sensing Symposium, 2019, pp. 9376–9379.
- 685 [12] D. Murugan, A. Garg, T. Ahmed, D. Singh, Fusion of drone and satellite data for precision agriculture monitor-
686 ing, in: 2016 11th International Conference on Industrial and Information Systems (ICIIS), 2016, pp. 910–914.
- 687 [13] L. Moreno, V. Ramos, M. Pohl, F. Huguet, Comparative study of multispectral satellite images and rgb images
688 taken from drones for vegetation cover estimation, in: 2018 IEEE 38th Central America and Panama Convention
689 (CONCAPAN XXXVIII), 2018, pp. 1–8.
- 690 [14] S. Tansuriyavong, H. Koja, M. Kyan, T. Anezaki, The development of wildlife tracking system using mobile
691 phone communication network and drone, in: 2018 International Conference on Intelligent Informatics and
692 Biomedical Sciences (ICIIBMS), Vol. 3, 2018, pp. 351–354.
- 693 [15] A. Mitra, B. Bera, A. K. Das, Design and testbed experiments of public blockchain-based security framework
694 for iot-enabled drone-assisted wildlife monitoring, in: IEEE INFOCOM 2021 - IEEE Conference on Computer
695 Communications Workshops (INFOCOM WKSHPS), 2021, pp. 1–6.
- 696 [16] C. Xie, J. Zhang, R. Li, J. Li, P. Hong, J. Xia, P. Chen, Automatic classification for field crop insects via
697 multiple-task sparse representation and multiple-kernel learning, *Computers and Electronics in Agriculture* 119
698 (2015) 123–132.
- 699 [17] K. Espinoza, D. L. Valera, J. A. Torres, A. López, F. D. Molina-Aiz, Combination of image processing and arti-
700 ficial neural networks as a novel approach for the identification of *Bemisia tabaci* and *Frankliniella occidentalis*
701 on sticky traps in greenhouse agriculture, *Computers and Electronics in Agriculture* 127 (2016) 495–505.
- 702 [18] M. Valan, K. Makonyi, A. Maki, D. Vondráček, F. Ronquist, Automated taxonomic identification of insects
703 with expert-level accuracy using effective feature transfer from convolutional networks, *Systematic Biology*
704 68 (6) (2019) 876–895.
- 705 [19] C. Wen, D. Guyer, Image-based orchard insect automated identification and classification method, *Computers*
706 *and electronics in agriculture* 89 (2012) 110–115.
- 707 [20] C.-J. Chen, Y.-Y. Huang, Y.-S. Li, C.-Y. Chang, Y.-M. Huang, An aiot based smart agricultural system for
708 pests detection, *IEEE Access* 8 (2020) 180750–180761.

- 709 [21] Y. He, Z. Zhou, L. Tian, Y. Liu, X. Luo, Brown rice planthopper (*Nilaparvata lugens* (Stål)) detection based
710 on deep learning, *Precision Agriculture* 21 (6) (2020) 1385–1402.
- 711 [22] W. Li, D. Wang, M. Li, Y. Gao, J. Wu, X. Yang, Field detection of tiny pests from sticky trap images using
712 deep learning in agricultural greenhouse, *Computers and Electronics in Agriculture* 183 (2021) 106048.
- 713 [23] Y.-L. Park, J. R. Cho, G.-S. Lee, B. Y. Seo, Detection of *Monema flavescens* (Lepidoptera: Limacodidae)
714 cocoons using small unmanned aircraft system, *Journal of Economic Entomology* 114 (5) (2021) 1927–1933.
- 715 [24] V. Ferrari, R. Calvini, B. Boom, C. Menozzi, A. K. Rangarajan, L. Maistrello, P. Offermans, A. Ulrici, Evaluation
716 of the potential of near infrared hyperspectral imaging for monitoring the invasive brown marmorated stink bug,
717 *Chemometrics and Intelligent Laboratory Systems* (2023) 104751.
- 718 [25] R. Trufelea, M. Dimoiu, L. Ichim, D. Popescu, Detection of harmful insects for orchard using convolutional
719 neural networks, *UPB Sci. Bull. Ser. C* 83 (4) (2021) 85–96.
- 720 [26] DJI, Maryland Biodiversity Dataset, <https://www.marylandbiodiversity.com/> (2022).
- 721 [27] L. Ichim, R. Ciciu, D. Popescu, Using drones and deep neural networks to detect halyomorpha halys in ecological
722 orchards, in: *IGARSS 2022-2022 IEEE International Geoscience and Remote Sensing Symposium, IEEE, 2022*,
723 pp. 437–440.
- 724 [28] G. Jocher, et al., ultralytics/yolov5: v6. 1-tensorrt, tensorflow edge tpu and opencv export and inference
725 (2022).
- 726 [29] X. Zhou, D. Wang, P. Krähenbühl, Objects as points, arXiv preprint arXiv:1904.07850 (2019).
- 727 [30] J. Xu, Y. Pan, X. Pan, S. Hoi, Z. Yi, Z. Xu, Regnet: self-regulated network for image classification, *IEEE*
728 *Transactions on Neural Networks and Learning Systems* (2022).
- 729 [31] N. D. Narvekar, L. J. Karam, A no-reference image blur metric based on the cumulative probability of blur
730 detection (cpbd), *IEEE Transactions on Image Processing* 20 (9) (2011) 2678–2683.
- 731 [32] C. Ware, Chapter three - lightness, brightness, contrast, and constancy, in: C. Ware (Ed.), *Information Vi-*
732 *sualization (Fourth Edition)*, fourth edition Edition, Interactive Technologies, Morgan Kaufmann, 2021, pp.
733 69–94.
- 734 [33] G. Jocher, A. Stoken, J. Borovec, L. Changyu, A. Hogan, L. Diaconu, J. Poznanski, L. Yu, P. Rai, R. Ferriday,
735 et al., ultralytics/yolov5: v3. 0, Zenodo (2020).
- 736 [34] F. Betti Sorbelli, F. Corò, S. K. Das, E. Di Bella, L. Maistrello, L. Palazzetti, C. M. Pinotti, A drone-based
737 application for scouting halyomorpha halys bugs in orchards with multifunctional nets, in: *2022 IEEE In-*
738 *ternational Conference on Pervasive Computing and Communications Workshops and other Affiliated Events*
739 *(PerCom Workshops), IEEE, 2022*, pp. 127–129.
- 740 [35] F. Betti Sorbelli, F. Corò, S. K. Das, L. Palazzetti, C. M. Pinotti, Drone-based optimal and heuristic orienteering
741 algorithms towards bug detection in orchards, in: *2022 18th International Conference on Distributed Computing*
742 *in Sensor Systems (DCOSS), 2022*, pp. 117–124.
- 743 [36] P. Skalski, Make Sense, <https://github.com/SkalskiP/make-sense/> (2019).
- 744 [37] J. Redmon, S. Divvala, R. Girshick, A. Farhadi, You only look once: Unified, real-time object detection (2016).
745 [arXiv:1506.02640](https://arxiv.org/abs/1506.02640).
- 746 [38] F. Zhuang, et al., A comprehensive survey on transfer learning, *Proceedings of the IEEE* 109 (1) (2021) 43–76.

- 747 [39] M. Everingham, L. Van Gool, C. K. Williams, J. Winn, A. Zisserman, The pascal visual object classes (voc)
748 challenge, *International journal of computer vision* 88 (2010) 303–338.
- 749 [40] T. Lin, M. Maire, S. J. Belongie, L. D. Bourdev, R. B. Girshick, J. Hays, P. Perona, D. Ramanan, P. Dollár,
750 C. L. Zitnick, Microsoft COCO: common objects in context, *CoRR* abs/1405.0312 (2014). [arXiv:1405.0312](https://arxiv.org/abs/1405.0312).
- 751 [41] T.-Y. Lin, et al., Microsoft coco: Common objects in context, in: *European conference on computer vision*,
752 Springer, Zurich, Switzerland, 2014, pp. 740–755.
- 753 [42] L. Bottou, Large-scale machine learning with stochastic gradient descent, in: *19th Intl. Conference on Compu-*
754 *tational Statistics, COMPSTAT*, Physica-Verlag, Paris, 2010, pp. 177–186.
- 755 [43] Opencv: Smoothing images, https://docs.opencv.org/4.x/d4/d13/tutorial_py_filtering.html, (Accessed
756 on 05/13/2023) (2023).