



UNIVERSITÀ
DEGLI STUDI
FIRENZE

FLORE

Repository istituzionale dell'Università degli Studi di Firenze

Size fractionation as a tool for separating charcoal of different fuel source and recalcitrance in the wildfire ash layer

Questa è la Versione finale referata (Post print/Accepted manuscript) della seguente pubblicazione:

Original Citation:

Size fractionation as a tool for separating charcoal of different fuel source and recalcitrance in the wildfire ash layer / Mastrodonato, Giovanni; Hudspeth, Victoria A.; Francioso, Ornella; Rumpel, Cornelia; Montecchio, Daniela; Doerr, Stefan H.; Certini, Giacomo. - In: SCIENCE OF THE TOTAL ENVIRONMENT. - ISSN 0048-9697. - STAMPA. - 595:(2017), pp. 461-471. [10.1016/j.scitotenv.2017.03.295]

Availability:

The webpage <https://hdl.handle.net/2158/1081045> of the repository was last updated on 2021-03-26T17:08:24Z

Published version:

DOI: 10.1016/j.scitotenv.2017.03.295

Terms of use:

Open Access

La pubblicazione è resa disponibile sotto le norme e i termini della licenza di deposito, secondo quanto stabilito dalla Policy per l'accesso aperto dell'Università degli Studi di Firenze (<https://www.sba.unifi.it/upload/policy-oa-2016-1.pdf>)

Publisher copyright claim:

La data sopra indicata si riferisce all'ultimo aggiornamento della scheda del Repository FloRe - The above-mentioned date refers to the last update of the record in the Institutional Repository FloRe

(Article begins on next page)



Contents lists available at ScienceDirect

Science of the Total Environment

journal homepage: www.elsevier.com/locate/scitotenv



Size fractionation as a tool for separating charcoal of different fuel source and recalcitrance in the wildfire ash layer



Giovanni Mastrolonardo ^{a,b,*}, Victoria A. Hudspith ^c, Ornella Francioso ^b, Cornelia Rumpel ^d, Daniela Montecchio ^b, Stefan H. Doerr ^e, Giacomo Certini ^f

^a Department BIOSystem Engineering - Gembloux Agro-Bio Tech, University of Liege, Avenue Maréchal Juin 27, B-5030 Gembloux, Belgium

^b Dipartimento di Scienze Agrarie, Università degli Studi di Bologna, V.le Fanin 40, 40127 Bologna, Italy

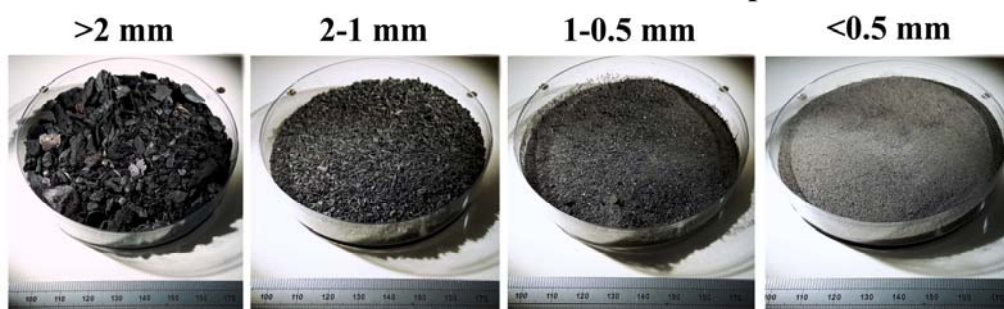
^c wildFIRE Lab, Hatherly Laboratories, University of Exeter, Exeter EX4 4PS, UK

^d CNRS; Institute of Ecology and Environment Paris (IEES, UMR UPMC-UPEC-INRA -CNRS - IRD), Campus AgraParisTech, Thiverval-Grignon, France

^e Geography Department, Swansea University, Singleton Park, Swansea SA28PP, UK

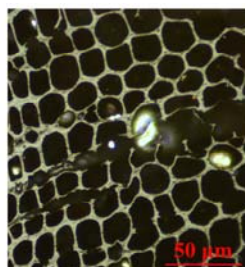
^f Dipartimento di Scienze delle Produzioni Agroalimentari e dell'Ambiente (DISPAA), Università degli Studi di Firenze, Piazzale delle Cascine 28, 50144 Firenze, Italy

Size fractionation of wildfire combustion products

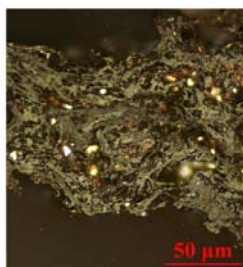


Main parent material of size fractions

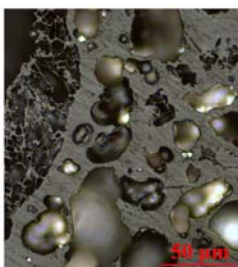
gymnosperm wood



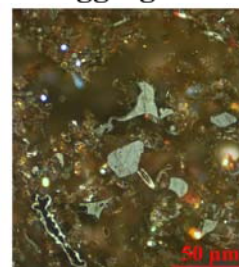
humified matter



decomposed matter



soil aggregates



Main characteristics of size fractions

Carbon content

Ash content

Thermal recalcitrance index R_{50}

Highlights

- Combustion products from two forest wildfires with different severity were analysed
- Collected material was divided into four size fractions (>2, 2–1, 1–0.5, <0.5 mm)
- Size fractionation allowed isolating charred material with distinct properties
- Specific source fuels were preferentially sorted into specific size fractions
- Mineral ash content is a reliable indicator for selecting the best fractions to isolate

Abstract

Charcoal is a heterogeneous material exhibiting a diverse range of properties. This variability represents a serious challenge in studies that use the properties of natural charcoal for reconstructing wildfires history in terrestrial ecosystems. In this study, we tested the hypothesis that particle size is a sufficiently robust indicator for separating forest wildfire combustion products into fractions with distinct properties. For this purpose, we examined two different forest environments affected by contrasting wildfires in terms of severity: an eucalypt forest in Australia, which experienced an extremely severe wildfire, and a Mediterranean pine forest in Italy, which burned to moderate severity. We fractionated the ash/charcoal layers collected on the ground into four size fractions (>2, 2–1, 1–0.5, <0.5 mm) and analysed them for mineral ash content, elemental composition, chemical structure (by IR spectroscopy), fuel source and charcoal reflectance (by reflected-light microscopy), and chemical/thermal recalcitrance (by chemical and thermal oxidation).

At both sites, the finest fraction (<0.5 mm) had, by far, the greatest mass. The C concentration and C/N ratio decreased with decreasing size fraction, while pH and the mineral ash content followed the opposite trend. The coarser fractions showed higher contribution of amorphous carbon and stronger recalcitrance. We also observed that certain fuel types were preferentially represented by particular size fractions. We conclude that the differences between ash/charcoal size fractions were most likely primarily imposed by fuel source and secondarily by burning conditions. Size fractionation can therefore serve as a valuable tool to characterise the forest wildfire combustion

products, as each fraction displays a narrower range of properties than the whole sample. We propose the mineral ash content of the fractions as criterion for selecting the appropriate number of fractions to analyse.

1. Introduction

Every year wildfires affect over 3% of Earth's vegetated land surface (Randerson et al., 2012), which has large direct consequences for the global carbon (C) cycle because of the transformation of a large amounts of organic matter (OM) to CO₂ (Alexis et al., 2007). However, wildfires do not imply complete combustion of OM (González-Pérez et al., 2004; Certini et al., 2011), and the incomplete combustion residue produced is a carbon-rich heterogeneous black material, typically characterised by a condensed aromatic structure. This material can accumulate on the ground in large quantities across the burned area, and is referred to as pyrogenic organic matter (PyOM) or pyrogenic carbon (PyC) (Santín et al., 2016a). PyOM represents a continuum of materials showing a different degree of carbonization, which ranges from slightly charred biomass to highly condensed soot (Masiello, 2004).

Within this continuum, charcoal comprises coarse particles (mm-cm) that retain the physical and chemical properties allowing to identify its biomass source (Bird and Ascough, 2012; Knicker et al., 2008; Scott, 2010). The aromatic structure gives charcoal an inherent increased resistance to biotic and abiotic degradation (Eckmeier et al., 2007; Wiechmann et al., 2015), which is further increased once the charcoal is buried in soil, due to enhanced physical protection, to an extent that charcoal is a common source of paleoenvironmental and archaeological proxy data (Ascough et al., 2008).

However, charcoal is a heterogeneous material (Bird and Ascough, 2012; Pyle et al., 2015), whose variability is mostly due to differences in burning conditions (in terms of temperature, duration, flaming or smouldering conditions, oxygen availability et cetera) and source materials (*e.g.* woody or grass vegetation, leaves or branches, conifers or broadleaves) (Bodí et al., 2014; Knicker et al., 2008; Merino et al., 2015; Santín et al., 2012; Wiechmann et al., 2015) and their interactive effect

(Hatton et al., 2016). Therefore, charcoal heterogeneity is particularly high in fire affected natural forest ecosystems, due to an often wide diversity of species, fuel types, structure and density, combined with a high spatial and temporal variability in fire behaviour (temperature, flame residence time, oxygen availability) in a given fire (Pyle et al., 2015; Santín et al., 2016b).

The variability of charcoal composition and structure has obvious implications for charcoal fate in the environment (McBeath et al., 2013; Santín et al., 2016b) and, hence, on its role in the global carbon cycle (Bird et al., 2015; Santín et al., 2016a). Therefore, an important research need is to disentangle the complex nature of charcoal. In context, some authors have previously reported size fractionation as a means to separate charcoal pools with contrasting composition (*i.e.* Nocentini et al., 2010; Rumpel et al., 2007; Francioso et al., 2011). In spite of its simplicity, however, this technique is not yet extensively used to characterise wildfire combustion products. As highlighted by Michelotti and Miesel (2015), the current knowledge on charcoal composition and fate is primarily based on studies dealing with charcoal produced under experimental conditions in the laboratory, which it is not fully representative of charcoal from wildfires (Alexis et al., 2010; Belcher and Hudspith, 2016). More research on natural charcoal is therefore needed.

This study focuses on the ash/charcoal layer from two forests burned at different severities. This material was fractionated into four different size fractions (>2, 2–1, 1–0.5, <0.5 mm) with the aim to ascertain to which extent particle size fractionation is a reliable method to obtain specimens with distinct composition. The size and number of fractions were those chosen by Nocentini et al. (2010), in order to have a direct basis of comparison with the results of their work. Of these fractions we also evaluated the thermal recalcitrance using the thermal recalcitrance index (R_{50}) developed by Harvey et al. (2012) for biochar, *i.e.* charcoal produced under controlled standard conditions. Here, for the first time, we tested to see if this index could also be applicable to wildfire charcoal.

2. Materials and Methods

2.1. Study sites

The study sites were Orentano (hereafter called OR), 30 km east of Pisa, Central Italy, and Mount Gordon (hereafter called MG), near Marysville, in the State of Victoria, south-east Australia.

OR (coordinates WGS84: 43°47'22.82"N, 10°39'52.30"E) has an elevation of 20 m a.s.l., a mean annual precipitation of 893 mm and a mean annual temperature of 14.3 °C. The vegetation cover was a mixed forest of Downy oak (*Quercus pubescentis* Willd) and Maritime pine (*Pinus pinaster* Aiton) with a thick understory of common fern (*Pteridium aquilinum* L.) and *Rubus spp.* In July 2011, an area of 3.3 ha underwent a wildfire considered 'moderately to highly severe' using the visual scales of litter and vegetation consumption proposed by Chafer et al. (2004). Most of the tree stems were still standing after the fire, partly or totally scorched, while the soil was covered by an ash/charcoal layer with very little or no uncharred litter remaining. This layer was sampled three days after the fire, prior to any rain. Additional information about the site, including a picture of the burned area, is reported in Mastrolonardo et al. (2015a).

The climate at MG, is characterised by a mean annual precipitation of 670 mm and mean annual temperature of 13 °C. The site was chosen because it represented an end-member in terms of fire severity. It was affected by the so-called 'Black Saturday fire' in early February 2009. Fire-line intensity was estimated to have exceeded 70,000–80,000 kW m⁻¹, which is one of the highest reported in Australia (2009 Victorian Bushfires Royal Commission, 2010). The sampling site (37°31'56.30"S, 145°43'17.14"E) is 3 km SW of Marysville, on the road to Narbethong, 530 m a.s.l. in elevation. It was a *Eucalyptus spp.* forest and the wildfire removed the entire litter layer, green vegetation, and woody stems <10 mm in diameter. Accordingly, fire severity was classified as 'extreme', based on the classification of Chafer et al. (2004). Sampling was performed in April 2009, two months after the fire and following some light rainfall, but before the more intense precipitations of winter had caused any significant mixing or removal of material from the ash/charcoal layer could occur via erosion. Additional information about the site, including pictures

of the burned area, are reported in Mastrolonardo et al. (2015a) and Santín et al. (2012).

In addition, we used published data from another study site, Migliarino (hereafter, MI), described by Nocentini et al. (2010), for a direct comparison to our study site OR given their proximity and similarity in terms of vegetation. MI, which is located 30 km west of Pisa, had a *Pinus pinea* L. forest with a tangled bushy understory of *Quercus ilex* L., *Smilax aspera* L. and *Erica arborea* L. that was affected in July 2007 by a wildfire of ‘high to very high’ severity (Certini et al., 2011), based on the classification of Chafer et al. (2004).

2.2. Sampling and sample preparation

At both study sites, OR and MG, sampling involved the entire ash/charcoal topsoil layer, which is the particulate residue of the burning, consisting of minerals and charred organic components (Bodí et al., 2014). This material was sampled on four parallel 20 m transects, laid out 5 m apart, choosing a point at 5 m intervals, but sampling just one point out two (ten samples in total each site).

At the OR site, at each sampling point the ash/charcoal layer was carefully removed by a brush within a 40 x 40 cm rigid frame, limiting, as far as possible, contamination from the underlying mineral soil. Similarly, four samples of litter layer were taken randomly in an adjacent (50 m away) unburned area and were checked for the presence of charcoal, to ensure that the charcoal analysed in this study did not derive also from a previous wildfire.

At MG, a 30 x 30 cm square was sampled at each sampling point. The cohesive nature of the moist ash/charcoal layer contrasted with the dry and highly water repellent underlying mineral soil, allowing selectively sampling the former (Doerr et al., 2010; Santín et al., 2012). Once in the laboratory, the samples were air dried and sieved into four size fractions: >2, 2–1, 1–0.5, <0.5 mm. Although no unburned litter remained at MG for sampling, the presence of significant amounts of charred material in the litter layer is unlikely here because of the long time that had elapsed since the previous fire in 1939 (Santín et al., 2012).

2.3. General chemical properties

The mineral ash content of the size fractions was determined gravimetrically after dry combustion in a muffle furnace at 550 °C for 6 h. The pH was measured potentiometrically on pulverised sample by adding deionised water to a ratio 1:5. Carbon, nitrogen and hydrogen concentrations were measured in triplicate on each sample by a Carlo Erba NA1500 elemental analyser, after pre-treatment of samples with 6 M HCl at 80 °C to eliminate carbonates (Pansu and Gautheyrou, 2006). The oxygen (O) content was calculated by difference on a dry ash-free basis. Carbon-thirteen (¹³C) was measured by an isotope ratio mass spectrometer (Micromass-Optima) and reported in $\delta^{13}\text{C}$ per mil (‰) relative to the international standard Vienna–Pee Dee Belemite (VPDB).

2.4. Chemical recalcitrance (resistance to dichromate oxidation)

The chemical recalcitrance of charcoal in the size fractions was estimated on the basis of chemical oxidation resistant carbon, as originally proposed by Bird and Gröke (1997). The oxidation was performed on five replicates per size fraction. Briefly, 200 mg of sample was mixed with 40 mL of a potassium dichromate solution (0.1 M K₂Cr₂O₇/2M H₂SO₄) and maintained at 60° C for 24 h. Thereafter, the sample was washed at least four times with 50 mL distilled water and the residue left to oven-dry at 50 °C. Weight loss was measured and the recovered C and N were determined by the elemental analyser. The chemical oxidation resistant carbon and nitrogen fraction (called COREC and COREN, respectively) were calculated through mass balance, *i.e.* subtracting the mass of C and N in the residue from the mass of C and N in the untreated sample.

2.5. Thermal recalcitrance (TG analysis and R₅₀ recalcitrance index)

Thermogravimetric/derivative thermogravimetric analysis (TG/DTG) was carried out in duplicate using a TG-DTA92 instrument (SETARAM, France). Three to ten mg of pulverised sample was weighed in an alumina crucible, isothermally heated to 30 °C for 10 min and then heated from 30 to 700 °C in a dynamic air atmosphere (air flow 8 L h⁻¹), at a rate of 10 °C min⁻¹.

The R_{50} recalcitrance index was calculated according to equation (1), as in Harvey et al. (2012):

$$R_{50, x} = T_{50, x} / T_{50, \text{graphite}} \quad (1)$$

Where $T_{50, x}$ and $T_{50, \text{graphite}}$ are the temperatures corresponding to 50% oxidation/volatilization of charcoal in sample x and graphite, respectively. Values for $T_{50, x}$ were obtained directly from TG thermograms that had been corrected for water and ash content. Since the instrument we used in this analysis could not reach temperatures able to completely oxidise graphite (over 1000 °C), we assumed $T_{50, \text{graphite}}$ value to be 886 °C, as calculated by Harvey et al. (2012) in similar conditions to ours.

2.6. Infrared spectroscopy

Diffuse reflectance infrared Fourier transform spectroscopy (*DRIFT*) spectra were recorded in triplicate by a Bruker TENSOR series FT-IR Spectrophotometer (Bruker, Ettlingen, Germany) equipped with an apparatus for diffuse reflectance (Spectra-Tech. Inc., Stamford, CT, USA). Samples were diluted with KBr (Aldrich Chemical Co. Milwaukee, WI, USA), which was used also as background reference. Spectra were collected as Kubelka-Munk units. Curve-fitting analysis was performed to calculate the area under each of the individual bands by using Grams/386 spectroscopic software (version 6.00, Galactic Industries Corporation, Salem, NH) as in Mastrodonato et al. (2015b). The integrals of the peaks relative to aromatic rings in amorphous carbon (AC) at 1590-1600 cm^{-1} , carbonate (CO_3^{2-}) at 1440-1450 cm^{-1} , and carboxyl group at 1700-1720 cm^{-1} were used for multivariate statistical analyses.

2.7. Charcoal reflectance and fuel identification

Two randomly chosen samples per site – hereafter called OR-1, OR-2, MG-1, and MG-2 – were selected for microscopic analysis. A subsample each size fraction was embedded in polyester resin

and polished at the University of Exeter, UK. Three polished blocks were produced per size fraction, with the exception of the OR-1 <0.5 and 1–0.5 mm fractions, where the sample was plucked from the surface during polishing. The polished blocks were studied under oil with reflectance intensity (RI) 1.514 at 23 °C, using a Zeiss Axio-Scope A1 optical microscope with a TIDAS-MSP 200 microspectrometer and a × 50 objective (with × 32 eyepiece magnification). Manual reflectance measurements were taken and recorded using MSP200 v.3.47 software. Reflectance is a photometric measurement of the amount of incident light that is reflected from the polished surface of a charcoal sample (Ascough et al., 2010). This measurement is compared to the amount of light reflected by a synthetic standard of known reflectance. The system was calibrated with the following standards: strontium titanite (5.41% Ro), gadolinium gallium garnet (1.719% Ro), and spinel (0.42% Ro). Each polished block was traversed in three equally spaced transects, and all encountered particles were measured in quintuplicate. In total, 680 particles were analysed (*i.e.* 3,400 measurements).

Under reflected-light it was also possible to identify the original fuel type; this is particularly important as charcoal reflectance has been shown to vary between the fuel types burned in the same wildfire (*e.g.* Hudspith et al., 2014). However, fuel type identification using this method can be challenging. In fact, often the key characters required for taxonomic identification are only observed by studying multiple planes of section whereas, once the charcoal sample is embedded in resin, just one randomly orientated plane is sectioned. In this study, fuel type categories were identified only in the sufficiently coarse fractions, *i.e.* >2, 2–1, 1–0.5 mm.

2.8. Statistics

Data of size fractions from the same study site were compared by one-way ANOVA at 95% confidence level (SigmaPlot 12.0). Where data did not pass the normality test (Shapiro-Wilk) or the Equal Variance Test, the Kruskal-Wallis one-way analysis of variance on ranks was used. The Tukey Test was applied to determine the statistical difference between means.

Multivariate statistical analyses, Pearson correlation and Principal component analysis (PCA) were performed using IBM SPSS statistics 22. The considered variables were: AC (amorphous carbon), Carboxyl and CO₃ (all three calculated from integration of IR spectra); R₅₀; C; N; δ¹³C; pH; Ash. Reflectance values were not considered because of the lack of data for the finest fraction (<0.5 mm).

3. Results

3.1. Ash/charcoal mass and C content

At OR, the pine forest in Italy affected by a moderate severity fire, the ash/charcoal layer amounted to 5.03 Mg ha⁻¹, which, given the mean OC concentration of 266 g kg⁻¹, corresponded to 1.34 Mg OC ha⁻¹. At Mt. Gordon (MG), the eucalypt forest in Australia affected by an extremely severe fire, the ash/charcoal load was very high in terms of mass, amounting to 60.53 Mg ha⁻¹ (Santín et al., 2012), but its OC concentration was quite low, 79 g kg⁻¹, corresponding to 7.78 Mg OC ha⁻¹ (Santín et al., 2012).

3.2. Size fractions mass and composition

At OR, the <0.5 mm fraction was the most abundant (36% of total mass), while the two coarsest fractions were quantitatively similar and amounted to 26% and 24% of total mass, respectively (Table 1; Fig 1). At MG, the finest fraction was dominant in terms of mass, representing 66% of the whole, while the coarsest fraction represented just 5% (Table 1; Fig 1).

At OR, size fractions showed a clear trend of decreasing C concentration with decreasing size, from 510.4 to 168.5 g kg⁻¹, while no trend was apparent for N, which ranged between 9.6 and 16.2 g kg⁻¹. The C to N ratio decreased with decreasing particle size, a trend found also by Nocentini et al. (2010) at Migliarino (MI), a Mediterranean pine forest affected by a high severity fire. However, at our study site OR, the C/N ratio was almost half of that measured at MI (Table 1). Mineral ash

Table 1. Mass and carbon distribution between size fractions, C and N contents and ratio, H/C and O/C atomic ratio, mineral ash residue, and pH of fractions (mean and standard deviation of n = 10). Data for MI are from Nocentini et al., (2010). Data about 'bulk charcoal' from MG are from Santin et al. (2012). Different superscript letters indicate significant differences (p < 0.05) between fractions from the same site as determined by Tukey post-hoc test.

Site (Code)	Fraction mm	Mass distribution % of total	C distribution % of total	C g kg ⁻¹	N g kg ⁻¹	δ ¹³ C ‰	C/N	Ash g kg ⁻¹	pH	H/C	O/C
Orentano (OR)	<u>litter</u>	-	-	466.8 ± 93	18.3 ± 2.7	-29.13 ± 0.27	25	-	-	-	-
	<u>bulk charcoal</u>	-	-	266.3 ± 86	15.3 ± 0.3	-28.52 ± 0.48	17	-	-	-	-
	>2	26 ± 12	40 ± 14	510.4 ± 85 ^a	16.2 ± 0.4 ^a	-28.47 ± 0.49 ^a	31	180 ± 58 ^a	7.52 ± 0.61 ^a	0.65 ± 0.10 ^a	0.41 ± 0.26 ^a
	2-1	24 ± 4	28 ± 7	393.7 ± 42 ^{ac}	19.4 ± 0.2 ^{ac}	-28.87 ± 0.50 ^a	20	406 ± 69 ^{ab}	7.95 ± 0.30 ^a	0.77 ± 0.07 ^{ab}	0.28 ± 0.31 ^a
	1-0.5	14 ± 2	13 ± 4	293.8 ± 79 ^{bc}	16.3 ± 0.3 ^c	-28.67 ± 0.49 ^a	18	492 ± 92 ^{ab}	8.37 ± 0.75 ^{ab}	0.78 ± 0.09 ^{ab}	0.49 ± 0.64 ^a
<0.5	36 ± 9	19 ± 5	168.5 ± 38 ^b	9.6 ± 0.3 ^{bc}	-28.33 ± 0.52 ^a	17	701 ± 99 ^b	9.47 ± 0.28 ^b	0.9 ± 0.17 ^b	0.45 ± 0.35 ^a	
Migliarino (MI)	>2	<u>na</u>	55 ± 5	660.6 ± 98.4	13.2 ± 0.6	<u>na</u>	50	81 ± 2	<u>na</u>	0.03 ± 0.01	0.25 ± 0.05
	2-1	<u>na</u>	16 ± 2	517.4 ± 83.9	13.5 ± 2.2	<u>na</u>	39	111 ± 1	<u>na</u>	0.49 ± 0.01	0.34 ± 0.02
	1-0.5	<u>na</u>	4 ± 0	405.2 ± 86.2	13.8 ± 5.3	<u>na</u>	30	111 ± 13	<u>na</u>	0.61 ± 0.00	0.55 ± 0.02
	<0.5	<u>na</u>	23 ± 4	260.6 ± 79.3	13.6 ± 6.4	<u>na</u>	20	458 ± 45	<u>na</u>	0.77 ± 0.06	0.55 ± 0.04
Mt. Gordon (MG)	<u>bulk charcoal</u>	-	-	79 ± <u>na</u>	<u>na</u>	<u>na</u>	<u>na</u>	-	-	-	-
	>2	5 ± 3	24 ± 14	442.8 ± 134 ^a	7.8 ± 1.7 ^a	-27.53 ± 0.64 ^a	57	244 ± 93 ^a	6.81 ± 0.34 ^a	0.66 ± 0.12 ^a	0.58 ± 0.51 ^a
	2-1	14 ± 4	17 ± 10	151.1 ± 128 ^{bc}	5.2 ± 1.8 ^b	-27.44 ± 0.61 ^a	29	744 ± 66 ^{ab}	6.94 ± 0.15 ^a	1.16 ± 0.27 ^b	1.19 ± 0.36 ^a
	1-0.5	15 ± 3	17 ± 4	101.8 ± 24 ^c	5.5 ± 1.3 ^b	-27.47 ± 0.44 ^a	19	776 ± 43 ^{ab}	7.15 ± 0.45 ^a	1.34 ± 0.32 ^{bc}	0.80 ± 0.30 ^a
<0.5	66 ± 8	43 ± 10	63.3 ± 9 ^b	4.4 ± 0.7 ^b	-27.51 ± 0.45 ^a	14	861 ± 2 ^b	7.36 ± 0.14 ^a	1.74 ± 27 ^c	0.72 ± 0.21 ^a	

na= data not available

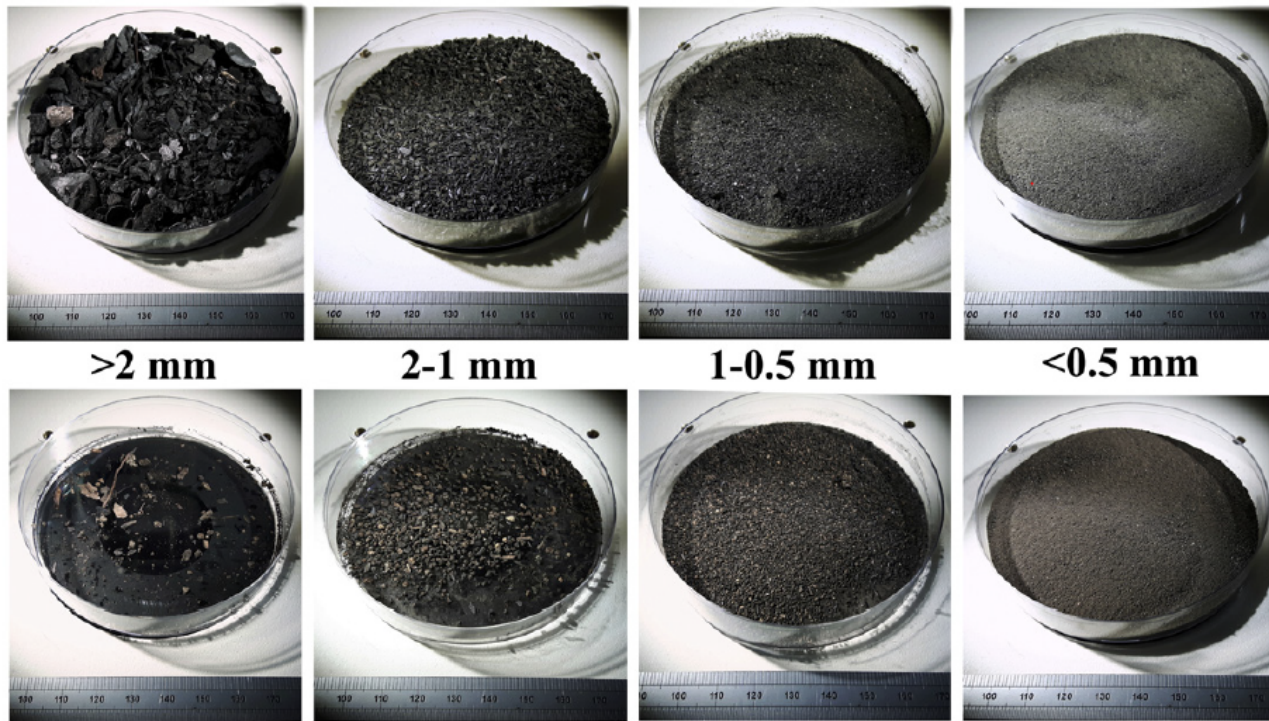


Fig. 1. The four size-fractions separated from the ash/charcoal layer at OR (above) and MG (below). These specimens were used for fuel identification and charcoal reflectance analysis.

content increased with decreasing size fraction, with the finest fraction containing 70% ash.

Nocentini et al. (2010) also observed this trend at MI, although at much lower values (8% of mineral ash in the coarsest fraction, up to 45% in the finest fraction). Given the alkalinity of ash, also the pH increased at OR with decreasing size fraction, from 7.52 to 9.47 (Table 1).

At MG, the C content of the size fractions, ranging from 442.8 to 63.3 g C kg⁻¹, was lower than that of the corresponding size fractions from OR. However, we found the same trends for C, N and mineral ash content according to size fractions as observed at OR (Table 1). The finest fraction still stored more than one third of the total C (38%) due to its high mass proportion, *i.e.* 66% of the total. The pH, while showing the same increasing trend with decreasing size fraction as found at OR, was considerably lower at MG (from 6.81 to 7.36; Table 1).

The H/C and O/C atomic ratios of charcoal provide an indirect indication of aromaticity because charcoal formation processes at high temperatures implies H and O depletion in aromatic C rings (Wiedemeier et al., 2015). While the H/C atomic ratio showed a clear trend of increasing values with decreasing size for both OR and MG charcoal fractions, O/C atomic ratios did not show any trend or significant difference between the fractions (Table 1). By plotting a Van Krevelen diagram of H/C and O/C values, the different size fractions cluster into distinct fields (Fig. 2). In particular, at OR the two coarsest fractions showed a degree of condensation comparable to coal materials, while the two finest fractions revealed much lower condensation. These results follow the same trend found at MI by Nocentini et al. (2010), despite the coarsest fraction at that site showing much higher condensation than the same fraction at OR (Fig. 2). At MG the fractions <2 mm showed considerably higher H/C and O/C ratios compared to OR.

The $\delta^{13}\text{C}$ signature of charcoal depends on both source material and the charring conditions (Bird and Ascough, 2012; Wiedemeier et al., 2015). At OR, the bulk charcoal showed a slightly different $\delta^{13}\text{C}$ signature ($-28.52 \pm 0.48 \text{ ‰}$) with respect to unburned litter ($-29.13 \pm 0.27 \text{ ‰}$), because of potential preferential depletion of ^{12}C from organic material, particularly cellulose, during heating

(Bird and Ascough, 2012). Finally, no significant difference in the $\delta^{13}\text{C}$ signature was found between the size fractions at both sites (Table 1).

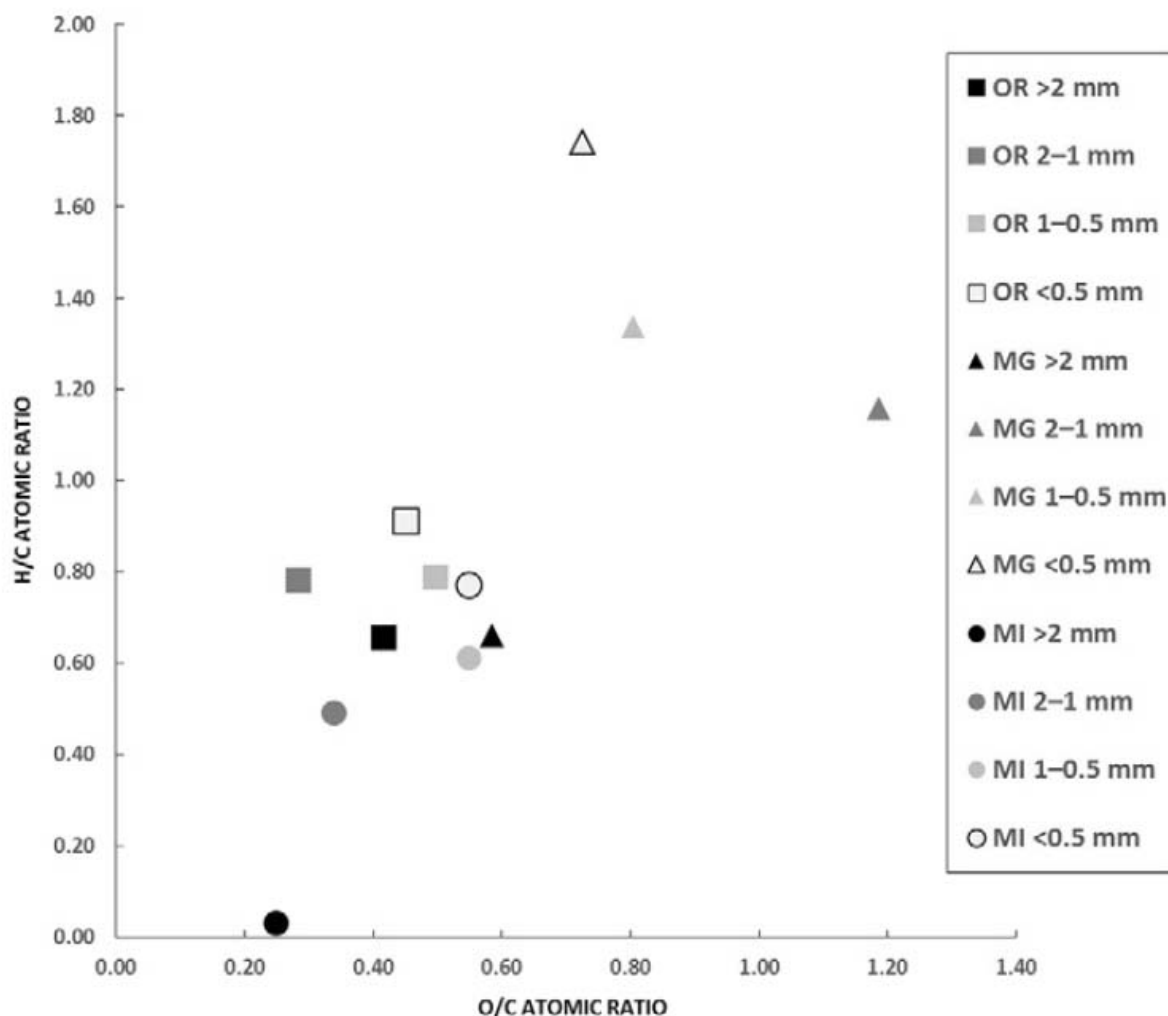


Fig. 2. Van Krevelen plot showing the median values of the four charcoal size fractions for OR, MG and MI (data from the MI study sites are from Nocentini et al., 2010).

3.3. Structural features assessed by IR spectroscopy

Overall, infrared spectra of size fractions from OR showed a gradual shift of major peaks moving from coarse fractions to finer ones (Fig. 3). All spectra were characterized by a broad signal in the region $4000\text{--}2500\text{ cm}^{-1}$, attributable to strong stretching vibration of OH groups in Al-OH ($3600\text{--}3500\text{ cm}^{-1}$) and hydroxyl linkage at around 3400 cm^{-1} . A shoulder between $3082\text{--}3066\text{ cm}^{-1}$ could be assigned to CH stretching in alkanes ($=\text{CH}_2$ and $=\text{CHR}$) and/or aromatic rings. The asymmetric (2930 cm^{-1}) and symmetric (2840 cm^{-1}) $-\text{CH}$ stretching appeared as a weak shoulder in all spectra,

while the peaks in the range 1240–1200 cm^{-1} probably belong to C–N and phenolic C–O stretching. The region 2400–2000 cm^{-1} showed weak peaks to assign to the CN stretching vibration of isocyanate, nitrile and cyanamide groups (Francioso et al., 2011; Nocentini et al., 2010).

The coarsest fraction was characterized by a shoulder at 1719 cm^{-1} , due to C=O stretching vibration in benzene-carboxylic acids (González-Pérez et al., 2004), and a couple of partly overlapping peaks at 1350 and 1273 cm^{-1} , due to C–O stretching motion (Guo and Bustin, 1998). This result matches the one by Nocentini et al. (2010), who at MI found carboxyl groups only in the coarsest size fraction.

All fractions showed strong bands at around both 1590 and 1400 cm^{-1} , which decreased with decreasing particles size and might be assigned to aromatic ring vibration in amorphous carbon (Francioso et al., 2011). These groups are not IR-active, but when the C is substituted with N or O in the aromatic bonds, the symmetry of the rings is broken, promoting bond dipoles and an IR-active signal (Kaufman et al., 1989). In the spectrum of the finest fraction (<0.5 mm), these peaks almost disappeared and were overlapped by a peak at 1457 cm^{-1} , which, like the one at 880 cm^{-1} , reveals the presence of carbonates (Tatzber et al., 2007). An increase of the signal at 1080–1035 cm^{-1} with decreasing particle size, as also found at MI by Nocentini et al. (2010), could be attributable to almost uncharred material, and/or to minerals (Madejová, 2003) from ash, or it could be due to soil impurities present in the ash/charcoal layer sampled.

At MG, there were clear differences between size fractions larger and smaller than 1 mm (Fig. 3). The IR spectra of the 2–1 and >2 mm fractions showed common features, such as the presence of oxygenate groups, as displayed by the peaks in the regions 3600–3000 cm^{-1} (OH groups stretch) and 2600–2400 cm^{-1} (H bonding between OH groups), as well as at 1700 (stretching of carboxyl group in acids) and 1380 cm^{-1} (stretching of C–O group). The bands of amorphous carbon, which appeared at around 1600 and 1400 cm^{-1} , were higher in these two fractions than in the smaller ones. The smaller than 1 mm fractions had much higher content in mineral components than the larger than 1 mm ones, as revealed by the more intense signals at 3600 cm^{-1} (OH groups in Al–OH), 1050 cm^{-1}

(Si-O-Si, Si-O stretching), 920 cm^{-1} (Al-OH stretching), 797 cm^{-1} (Si-O stretching; Si-O-Al stretch), and 679 cm^{-1} (Si-O and Si-O-Al stretch). Finally, the two smallest fractions showed a band at around 1600 cm^{-1} that could refer to the OH-bending vibrations of hydration water molecules.

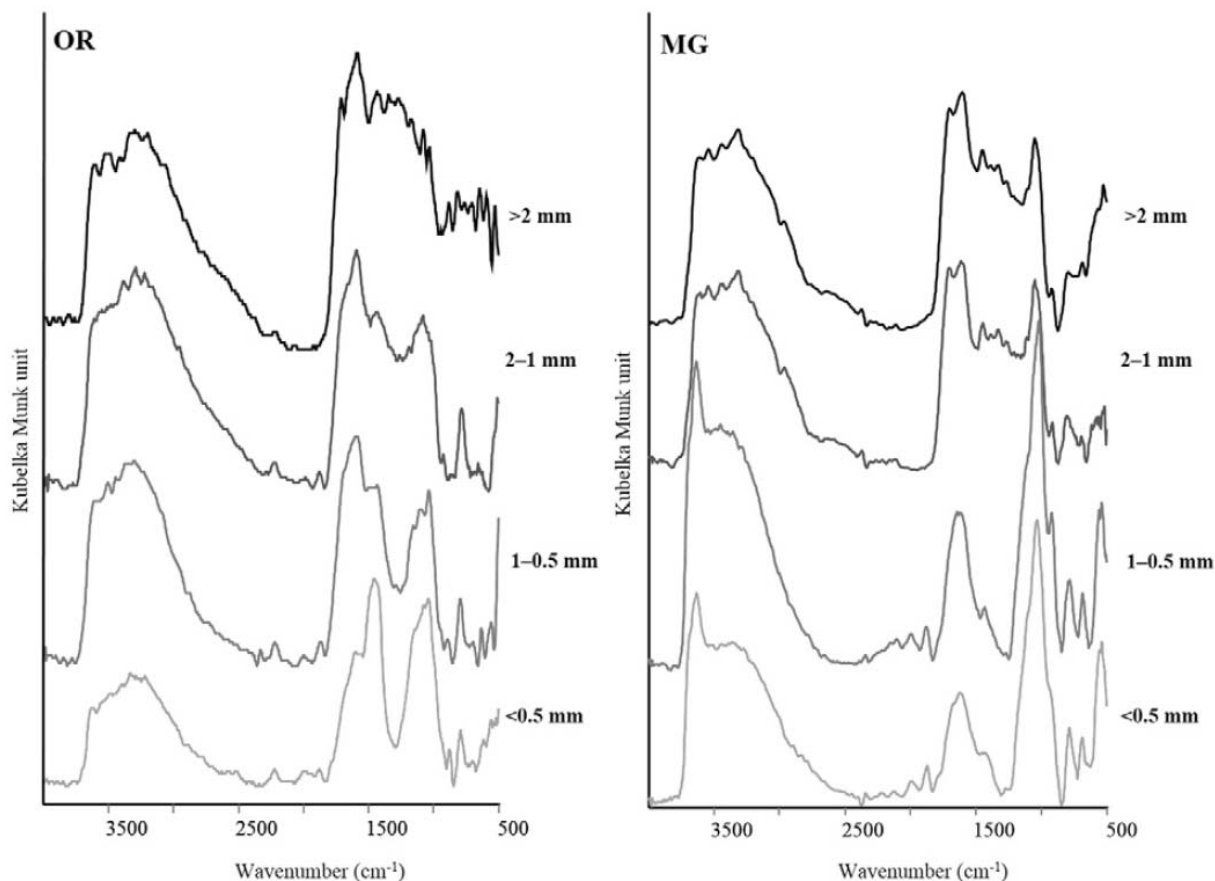


Fig. 3. DRIFT spectra of the four size fractions from a) OR and b) MG.

3.4. Chemical and thermal charcoal recalcitrance

Dichromate oxidation caused high loss of C and N in all size fractions (Table 2), with no clear trend or statistical difference between fractions at both sites, probably because of the large range of standard deviation values. This treatment is just one of the several used to quantify pyrogenic carbon, better expressed as chemical oxidation resistant elemental C (COREC) (Reisser et al., 2016). The COREC and COREN concentrations were similar in the fractions from both study sites, amounting to about 40% of initial C and 25% of initial N (Table 2). The COREC/COREN (C/N) ratio was much higher in the coarsest fraction than in the others, particularly at MG, therefore highlighting a possible higher recalcitrance of this fraction. Recalcitrance of each charcoal fraction

was also evaluated using the Recalcitrance index R_{50} that was developed by Harvey et al. (2012) for biochar. R_{50} values were similar at OR and MG, the coarsest charcoal fraction showing slightly higher values compared to the other fractions, which did not differ from each other (Table 2).

Table 2

Chemical oxidation resistant carbon (COREC) and nitrogen (COREN) (mean \pm standard deviation of $n = 5$), COREC/COREN (C/N) ratio and thermal recalcitrance index (R_{50} ; mean \pm standard deviation $n = 2$) of charcoal in the size fractions at both study sites. COREC and COREN values are expressed as % of initial C and N (mass balance).

Site (Code)	Fraction mm	COREC %	COREN %	C/N	R_{50}
Orentano (OR)	>2	43 \pm 17	21 \pm 8	66	0.50 \pm 0.00
	2–1	38 \pm 13	23 \pm 9	34	0.47 \pm 0.00
	1–0.5	38 \pm 10	25 \pm 8	28	0.47 \pm 0.01
	<0.5	36 \pm 16	28 \pm 18	25	0.47 \pm 0.00
Mt. Gordon (MG)	>2	44 \pm 7	22 \pm 9	171	0.48 \pm 0.00
	2–1	53 \pm 14	28 \pm 6	49	0.46 \pm 0.00
	1–0.5	37 \pm 5	25 \pm 6	29	0.45 \pm 0.00
	<0.5	33 \pm 7	28 \pm 5	17	0.45 \pm 0.00

3.5. Fuel type and charcoal reflectance

In the MG samples, six fuel type categories were observed: 1) two distinct angiosperm ‘wood’ types (identified basing on the presence of vessels); 2) ‘bark’ (from either wood type); 3) ‘herb’ (or parenchyma/non woody tissue); 4) ‘roots’ (here representing very fine roots, which likely derive from the herbaceous surface cover, whereas potential larger trees roots were classified as ‘wood’ as they could not be differentiated at this small charcoal particle size); 5) ‘soil aggregates’ and 6) ‘decomposed matter’, which is strongly degraded plant material likely from the litter layer (Table 3). The OR samples showed the same categories of fuel, however, one of the ‘wood’ types was gymnosperm wood (based on the occurrence of pycnoxylic wood and repeating rectangular cells), as well as charred ‘needles’ (from pine trees) and ‘humified matter’ (undifferentiated humified plant tissues).

At OR, wood was the main parent material in the coarsest charcoal fraction (>2 mm), on average amounting to about half of the total (Table 3). In contrast, the medium fractions (2–1 mm and 1–

0.5 mm) were mainly composed of herbaceous fuels and degraded plant material from the litter layer, and only to a lesser extent by wood (<28%).

At MG, the coarsest charcoal fraction was almost totally derived from wood (Table 3), whereas the medium fractions contained a wider variety of parent material, principally soil aggregates and secondarily decomposed material and wood. The considerable presence of soil aggregates is the further evidence of a contribution of fire-affected mineral soil material to the ash/charcoal material sampled. Although the fuel source composition of the finest (<0.5 mm) fraction was not quantified, it seemed to be largely composed of burned soil aggregates, with a minor component of decomposed material and wood, similar to the medium fractions.

When the combined reflectance data were plotted according to size fraction and site (Fig. 4), one sample from MG (MG-1) showed a significantly higher median reflectance for the coarsest fraction (>2 mm %R_omedian 1.79) than all the other fractions (%R_omedian 0.60 - 0.91) from both MG samples. In contrast, at OR, median reflectance was significantly higher in the fine fractions than in the >2 mm one (Fig. 4). Finally, the median reflectances of the two finest fractions (<1 mm) were higher at OR than at MG (Fig. 4). As charcoal reflectance is in part governed by the fuel type (*c.f.* Hudspith et al., 2014), we subsequently divided the reflectance data in each fraction according to fuel type (Table 3). As many of the fuel type categories we identified were likely derived from the same plant material (*i.e.* wood, bark and needles) or source (*i.e.* ground fuels, including: roots, soil aggregates, humified and decomposed plant material), data were further grouped into aboveground (understory and/or canopy level including: wood, bark, herb, needle) and ground fuel categories (Fig. 5). Overall, the ground fuels typically displayed reflectance values that were generally lower than aboveground fuels, despite the contrasting fuel compositions and fire behaviour between the OR and MG sites (Fig. 5). In both OR samples, in all but the 1–0.5 mm fraction, the median reflectance of ground fuels was significantly lower than the aboveground fuels (Fig. 5). A significant difference in median reflectance between the ground and the aboveground fuels was also found in one of the

Table 3

Fuel source and median charcoal reflectance for two randomly selected samples for each study site. Fuel sources are given as percentage of the total number of identified materials for each fraction. The total number of particles recognised is indicated in brackets. The median charcoal reflectance (R_o) values indicate the percentage of the incident light reflected.

Site	Fraction	Aboveground fuels										Ground fuels							
		wood 1		wood 2		bark		herb		needles		roots		soil aggregates		decomposed matter		humified matter	
(Code)	mm	% (n)	R_o	% (n)	R_o	% (n)	R_o	% (n)	R_o	% (n)	R_o	% (n)	R_o	% (n)	R_o	% (n)	R_o	% (n)	R_o
Orentano	>2	40 (115)	0.68	-	-	-	-	21 (60)	1.03	-	-	2 (5)	1.03	-	-	26 (75)	0.6	12 (35)	0.41
(OR-1)	1-0.5	17 (20)	1.16	-	-	-	-	29 (35)	0.85	8 (10)	0.98	13 (15)	0.83	-	-	29 (35)	1.03	4 (5)	0.65
Orentano	>2	47 (105)	1.07	9 (20)	1.03	4 (10)	0.61	7 (15)	0.56	-	-	2 (5)	0.57	-	-	18 (40)	0.87	13 (30)	0.47
(OR-2)	2-1	27 (105)	1.29	1 (5)	1.3	4 (15)	1.24	10 (40)	1.06	1 (5)	0.8	1 (5)	0.77	4 (15)	0.89	37 (141)	1.15	13 (49)	0.66
	1-0.5	16 (36)	1.21	4 (10)	1.12	2 (5)	1.2	13 (30)	1.16	-	-	4 (10)	0.89	2 (5)	0.77	54 (124)	1.11	-	-
Mt. Gordon	>2	79 (260)	1.77	11 (35)	2.79	-	-	-	-	-	-	2 (5)	0.38	-	-	9 (30)	1.16	-	-
(MG-1)	2-1	35 (90)	1.09	4 (10)	1.99	8 (20)	2.09	10 (25)	0.43	-	-	-	-	14 (35)	0.69	29 (75)	0.82	-	-
	1-0.5	14 (45)	0.85	-	-	3 (10)	0.85	6 (20)	0.75	-	-	2 (5)	0.35	59 (195)	0.61	15 (50)	0.45	-	-
Mt. Gordon	>2	100 (70)	0.9	-	-	-	-	-	-	-	-	-	-	-	-	-	-	-	-
(MG-2)	2-1	14 (50)	1.11	3 (10)	0.82	1 (5)	0.46	1 (5)	0.43	-	-	-	-	61 (225)	0.68	20 (75)	0.81	-	-
	1-0.5	9 (30)	0.89	3 (10)	1.14	3 (10)	1.01	3 (10)	1.31	-	-	-	-	52 (175)	0.68	28 (95)	0.91	-	-

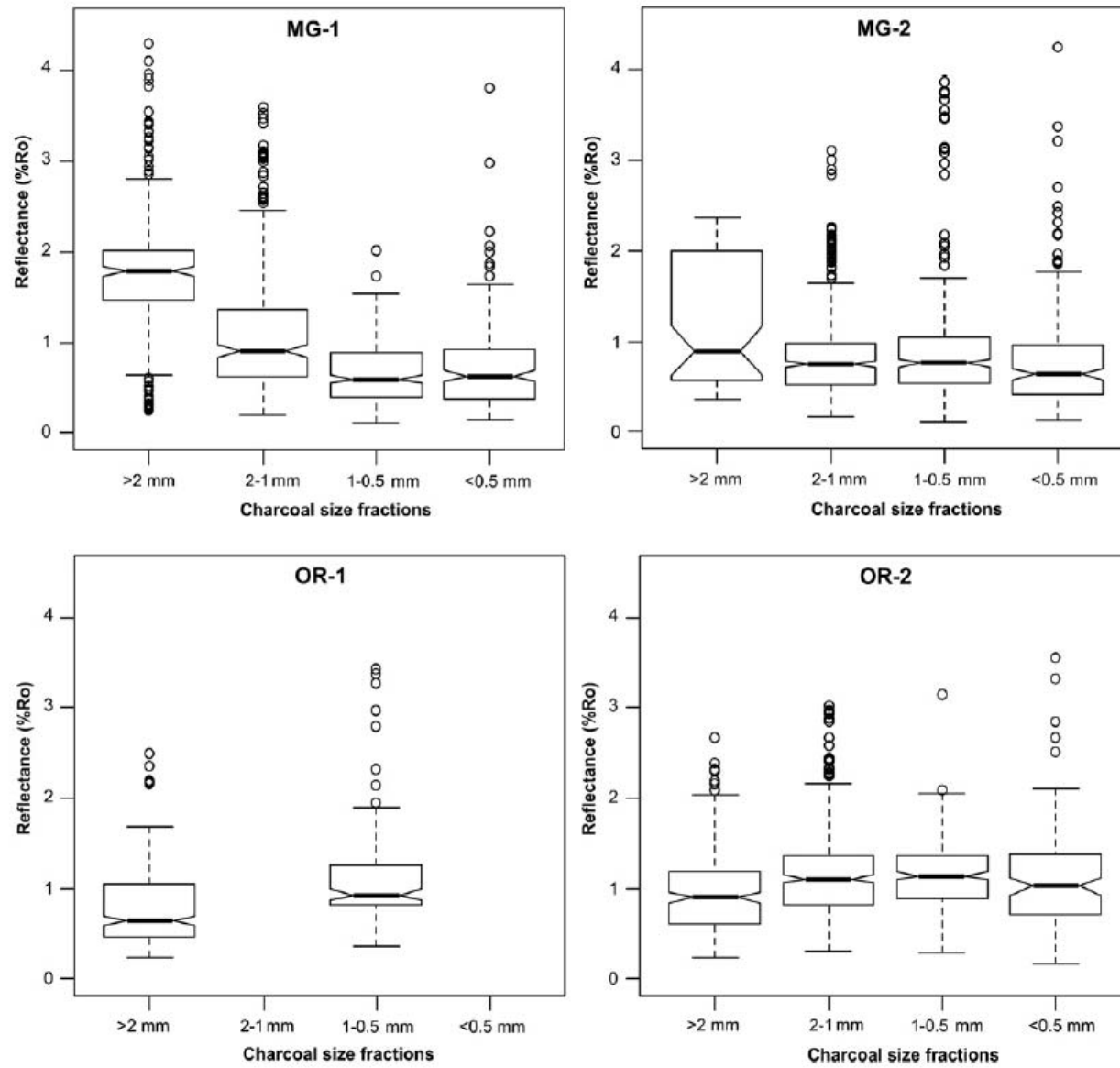


Fig. 4. Boxplots of charcoal reflectance data (two replicates each study site), grouped according to size fraction. No overlaps between boxplot notches indicate significant differences in median reflectance values at a 95% confidence interval.

two analysed samples from MG (MG-1) but not the other, where only the 1–0.5 mm fraction was significantly different from the others (Fig. 5).

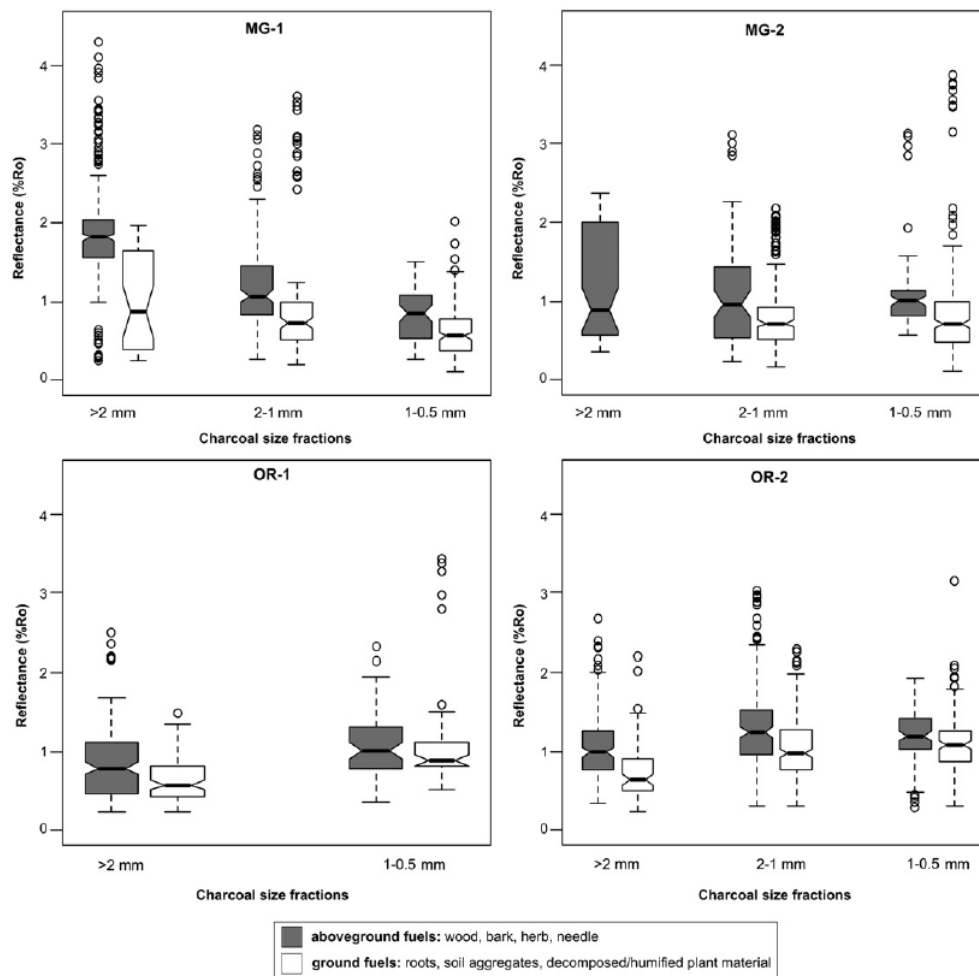


Fig. 5. Boxplots of reflectance data, two replicates each study site, of charcoal size fractions grouped according to aboveground fuels (gray) and ground fuels (white). No overlaps between boxplot notches indicate significant differences in median reflectance values at a 95% confidence interval.

3.6. Multivariate analysis

Pearson correlation coefficients are shown in supplementary material (S1). Several variables at both OR and MG were strongly and significantly correlated each other. The mineral ash content was inversely related to R_{50} and to the C content. The latter was directly related to N and R_{50} and inversely related to pH and carboxyl. Carboxyl was directly related to pH and ash. Carbonates were revealed only by the IR spectra of OR samples. They were directly related to ash and carboxyl and inversely related to C, AC and R_{50} . Finally, at MG, AC was inversely related only to carboxyl, while at OR AC was also inversely related to pH, ash and directly related to C and R_{50} .

The PCA outcome for both OR and MG is displayed in Table 4. At OR, two components were extracted by nine variables. The first principal component explained 69.2% of the total variation, the second one 21.2%. PC1 was particularly influenced by C, AC, and R₅₀ (negative contribution), pH, ash and carboxyl (positive contribution). For PC2, $\delta^{13}\text{C}$ had a high positive effect. At MG two components were extracted by 8 variables. Here the PC1 component explained 68.2 % of the total variation, the second one 16.7%. PC1 was particularly influenced by the same factors as at OR (C, AC, and R₅₀ negatively, pH and ash positively), apart from carboxyl, which did not influence much this first component. No variable had a strong (higher than 0.80) influence on PC2. Only the $\delta^{13}\text{C}$ value was high enough (0.76), the same variable influencing PC2 at OR.

When a new PCA was performed combining data from OR and MG, the intersection of Factor 1 and Factor 2 highlighted that groups were clustered according to site and size fraction (Fig. 6).

Overall, in both the study areas the fraction >2 mm appeared as isolated compared to the other ones, but this effect was more evident at MG than OR.

Table 4
Factor loadings on PC1 and PC2 for both OR and MG. Factors in bold show loadings >0.80 and <- 0.80.

OR	PC1	PC2	MG	PC1	PC2
C	-0.97	-0.15	C	-0.97	-0.13
N	-0.65	-0.71	N	-0.79	-0.33
$\delta^{13}\text{C}$	0.13	0.95	$\delta^{13}\text{C}$	0.60	0.76
pH	0.85	-0.05	pH	0.84	0.32
ash	0.99	0.02	ash	0.91	-0.36
AC	-0.98	0.09	AC	-0.83	0.48
carboxyl	0.95	0.13	carboxyl	-0.69	0.38
CO ³	0.79	-0.45	R ₅₀	-0.97	-0.13
R ₅₀	-0.80	0.49			
% of total variance	69.2	21.2	% of total variance	68.2	16.7
Cumulative %	-	90.4	Cumulative %	-	84.9

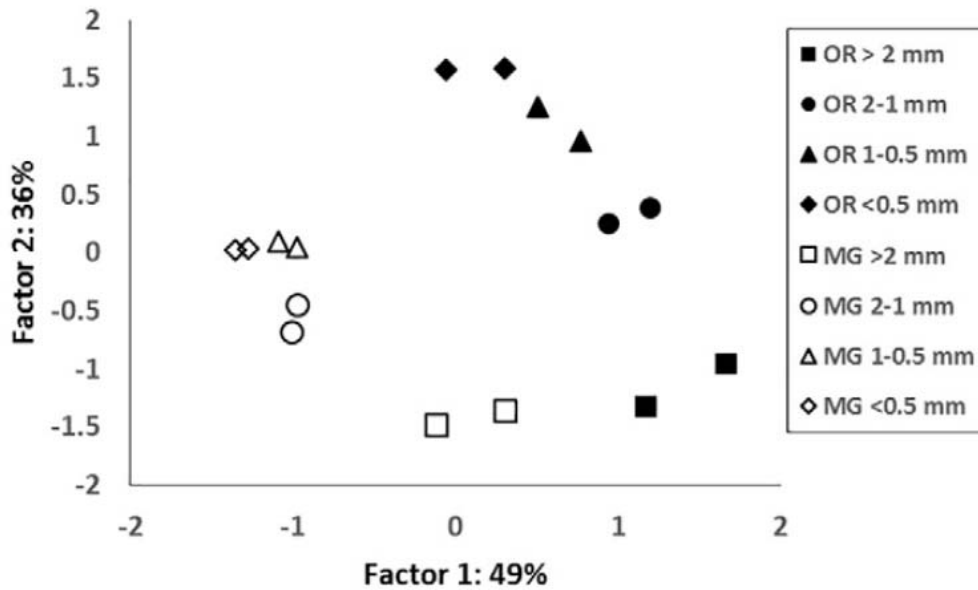


Fig. 6. Score plot of principal component analysis (PCA), Factors 1 and 2 for the variables examined (amorphous carbon; Carboxyl; CO₃; R₅₀; C; N; δ¹³C; pH; ash), from OR and MG sites together.

4. Discussion

4.1. Composition and recalcitrance of charcoal from OR and MG

Whilst our results are derived from two specific forest ecosystems and should not readily extrapolated to other environments, where different vegetation and fire characteristics may result in differing charcoal formation (e.g. grassland), our data shows many notably differences to previous studies. The C concentration at both OR and MG (Table 1), for instance, were quite low as compared to previously published data for charcoal in wildfire ash from forest ecosystems (e.g. Merino et al., 2015; Nocentini et al., 2010; Wiechmann et al., 2015). Charcoal recalcitrance, as inferred by chemical oxidation treatment, was also relatively low. COREC and COREN values from both OR and MG (Table 2) were almost half of those reported by Rumpel et al. (2007), obtained on charcoal particles larger than 2 mm with an oxidation time equal to ours, for a burned agricultural soil cultivated with Job's tears. Also the thermal recalcitrance index obtained from both OR and MG was relatively low (Table 2) if evaluated on the scale proposed by Harvey et al. (2012). This scale comprises of three classes with decreasing recalcitrance: class A, with $R_{50} \geq 0.70$, class B, with $0.50 \leq R_{50} < 0.70$, and class C, with $R_{50} < 0.50$. According to this scale only the fraction >2 mm

from OR belongs to class B, while all the others fractions from both the sites belong to class C, thus denoting a generally low recalcitrance of our wildfire charcoal. Nonetheless, it is worth highlighting that this scale was designed for biochar, a material produced under very oxygen-limited conditions that can be expected to be more recalcitrant than wildfire charcoal. Moreover, despite the differences in conditions in which biochar and wildfire charcoal form, Harvey et al. (2012) noted that many of the biochar samples also belong to class C. Therefore, it seems that the R_{50} index may be reliably used also on natural charcoal from forest wildfire. Actually, R_{50} index is related to the thermal stability of a material, which is a function of bond energy. Thus, the R_{50} index depends only on the molecular arrangement and chemical composition of a material. Furthermore, the effect of different parent materials should be minimal (e.g. hardwood, softwood, grass) because the R_{50} index is primarily controlled by the formation conditions of char (Harvey et al., 2012). Nonetheless, further studies are needed to confirm the validity of this index on natural charcoal formed from forest ecosystems as well as from other environments.

Overall, the high mineral ash content, low C content and low recalcitrance of the charcoal from OR and MG could plausibly be explained by significant contribution from uncharred material and/or mineral soil. However, R_{50} values of charcoal were substantially higher than those reported for uncharred material ($R_{50} < 0.39$; Harvey et al., 2012), suggesting that the contribution from the latter was minor in all size fractions. That said, spectroscopy analysis and visual characterization of fuel type clearly showed that, particularly at MG, the contribution from mineral soil to the ash/charcoal samples was not negligible and increased with decreasing size fraction (Fig. 3; Table 3).

A high mineral ash content would also affect the O concentration data, as these are calculated by difference (Nocentini et al., 2010; Wiedemeier et al., 2015), which does not account for the O contribution from the mineral ash. This would in turn also explain the lack of significant differences of the atomic O/C ratio values between the charcoal fractions (Table 1). As a result, all charcoal fractions from both OR and MG showed relatively low condensation degree (Fig. 2). In particular, the samples richest in mineral ash, the fractions < 2 mm from MG, showed extremely high H/C and

O/C ratios and a position in the Van Krevelen diagram that is not in line with charcoal. The potential impact this type of contamination may have on the overall charcoal properties, particularly in the determination of aromaticity using O/C atomic ratio, should therefore be taken into consideration when studying fine charcoal fractions from wildfires.

Natural post-fire mixing of mineral soil with the ash/charcoal top layer was unlikely to have occurred at OR, since the short time elapsed between wildfire and sampling. We can also exclude this at MG even so two months passed between the wildfire and sampling. The fragile ash layer was visually fully intact at all sampling locations, clear evidence of little or no topsoil mixing induced by wind, water or bioturbation. Therefore, the most likely explanation for the patterns discussed above is that the extreme burning conditions at MG led to charring and disintegration of the very top mineral soil layer, and this becoming part of the wettable ash layer, which overlay the lighter colored, structured and water repellent soil layer underneath.

4.2. Relationship between size fractions and fire severity / fuel source

The contrasting mass proportion of size fractions from OR and MG could indicate that higher severity fires produce charred materials with smaller sizes and a reduced proportion of organic content (Table 1). Indeed, it has been reported that charcoal particle size becomes finer with increasing temperatures (Bodí et al., 2014; Brook and Wittenberg, 2016). However, under the same fire conditions, different plant species and plant parts can result in charcoal particles of different size (Bodí et al., 2014) and mineral ash content (Forbes et al., 2006). In this study, at OR and MG, both pre-fire vegetation and fire behaviour differed greatly between sites, resulting in very different charcoal formation conditions. Yet, as highlighted by the multivariate analyses (S1; Table 4), some of the most important variables affecting the first principal component analysis and explaining much of the total variance (68-69%), were the same at both study areas: pH, C and mineral ash contents, charcoal aromaticity and recalcitrance. In particular, charcoal recalcitrance, C and mineral

ash contents were strongly related to each other and showed the same relationships at both sites (S1).

Notwithstanding this, there were some clear differences in the ash/charcoal particle size composition at the two sites. At MG, the coarsest fraction (>2 mm) was distinct from the others. In fact, it was much richer in OM and the charcoal showed higher charring/condensation degree and, apparently, higher recalcitrance. This result is probably an outcome of the fact that at MG angiosperm wood was almost the only fuel source of this fraction (Table 3). Probably, only the coarsest, highly lignified woody particles were not completely turned to ash or heavily reduced in size by the extremely severe fire that occurred at this site. At OR, the differences between the size fractions were consistent with those found at MG, but they were more gradual between the fractions. In particular, the >2 mm fraction was more similar to the 2–1 mm fraction than at MG. At OR, the source material in the coarsest fraction comprised wood, but also herbs and litter (Table 3). With decreasing size fraction, the ground fuels became more abundant. Here, as at MG, the gradual change in both composition and fuel types seems to confirm that parent material is a major controlling factor of the nature of size fractions.

At both sites, the charcoal in the coarsest fraction (>2 mm) showed the highest C content, aromaticity (high AC), and condensation (low H/C and O/C), which, along with the slightly higher thermal recalcitrance index (R_{50}), is indicative of longer residence time than the charcoal in the finer fractions, as suggested by Ohlson et al. (2009). This is not surprising as the majority of larger charcoal pieces in this study are wood (Table 3), which likely derived from down wood already present at the forest floor pre-fire, or trees and branches fallen during the fire. These fuels can all sustain some combustion after the passage of the main flaming front, which accounts for their higher charcoal C content and aromaticity. In contrast, the finer charcoal fractions represent a broader range of charred fuel types, including ground fuels (Table 3) and these finer fractions may therefore give a better indication of the overall fire behavior than the coarse (largely wood) charcoal alone.

In this regard, reflectance is a measureable property of charcoal that could semi-quantitatively relate to the duration of heating experienced by a given fuel (Belcher and Hudspith, 2016). This plausibly occurs because charcoal reflectance progressively increases during the combustion process, reaching a peak value just before the charcoal is converted to mineral ash (Belcher and Hudspith, 2016). As such, fuels of a given size and type that have been heated for longer durations will be more completely combusted, resulting in smaller charcoal particles with higher reflectance values (fractionated into the finer fractions). This is in agreement with our results from OR, where the median ground fuel charcoal reflectance in the finer fractions is significantly higher than the median reflectance of the ground fuels from the coarsest fraction (Fig. 5). This would suggest that relatively more thermal energy was delivered to the ground (Belcher and Hudspith, 2016), resulting in higher reflectance values for the ground fuels. Fire conditions in the canopy and in the understory are usually different (Halofsky and Hibbs, 2008; Knox and Clarke, 2016), which may partly explain why at MG charcoal reflectance was higher in aboveground fuels of the coarsest fraction than in the ground fuels (Fig. 5). At MG, during the wildfire the high wind speeds with gusts $>90 \text{ km h}^{-1}$ (2009 Victorian Bushfires Royal Commission, 2010) contributed to a fast-moving fire front. The resulting short fire residence time likely meant that post-frontal smouldering combustion of the ground fuels was relatively minor and that comparatively less thermal energy than at OR was delivered to the ground (as revealed by the low reflectance of ground fuels; Fig. 5), despite the high degree of fuel consumption in the understory and ground fuels (resulting in high ash production; Table 1). This finding is also supported by Doerr et al. (2010) who, at MG, highlighted the noticeable dichotomy between the extreme fire intensity and the moderate soil burn severity, as determined by the significant seedbed survival and presence of soil water repellency close to the soil surface.

4.3. Implications for future studies on freshly produced charcoal

There is an increasing need to standardize methodologies for analysing the PyOM continuum, including charcoal, and for separating fractions with narrower ranges of characteristics and

residence times in soil (Bird et al., 2015). Here we have shown that sieving is a cheap and time-effective procedure to obtain fractions that comprise natural charcoal from forest wildfires with specific properties in terms of parent material, chemical composition, and recalcitrance.

Considering all ash/charcoal as whole samples, in contrast, could lead to biased results or, at best, to loss of information. At OR, for instance, elemental analysis of the whole ash/charcoal material gave a quite similar result to the 1-0.5 mm fraction, which only represented 14% of the total mass of the whole, hence being the least abundant and representative fraction (Table 1).

The four size-fractions we focused on in this study were chosen *a priori*, based on the work by Nocentini et al. (2010), to enable direct comparison of samples from two Italian pine forest sites, OR in this study, and MI in theirs. The best size thresholds to capture intrinsic differences of the investigated material could be site-sensitive. To limit the number of time-consuming or expensive analyses, recombination of some similar size fractions could possibly be done based on the “mineral ash content” of the fractions, which is simple to determine and seems to relate well to both elemental composition and recalcitrance (S1). On this basis, for both OR and MG samples we could recombine – or, better, after a preliminary assessment, avoid separating – the 2-1 mm and 1-0.5 mm fractions. In fact, as well as the ash content, all the other variables that were compared with the post-hoc test (*i.e.* C; N; $\delta^{13}\text{C}$; pH; H/C; O/C) did not show any statistical difference between the two fractions (Table 1). This means that mixing those two fractions to reduce the number of samples to analyze would not significantly affect the quality of the final information. However, the IR spectra of MG may suggest some major structural differences between the 2–1 mm and 1–0.5 mm fractions. Consequently, determining the number of size fractions to be separated based on the mineral ash content alone certainly merits further investigation.

5. Conclusions

This study confirms the high variability of properties for the wildfires combustion products in general and, in particular, for charcoal. Such variability seems to depend, at least in part, on fire

severity, since we found that a higher severity fire (*i.e.* MG), which implied greater consumption of fuel, led to production of a higher proportion of ash and smaller charred particles with lower recalcitrance. However, we found that also the parent fuel was an important controlling factor of charcoal properties, perhaps even more important than fire conditions. In fact, certain fuels were apparently preferentially sorted into specific charcoal size-fractions, which showed distinct composition and recalcitrance. Size fractionation is thus a simple, fast and cheap tool for partially overcoming the inherent high variability of wildfire combustion products, and enabling obtaining specimens with a narrower range of properties. The most appropriate number of fractions to analyse and their size boundaries are probably site-specific, and thus should be defined on a case-by-case basis. We propose for this purpose the mineral ash content of the separated size fractions as a powerful indicator of substantial similarity of two or more fractions and, thus, of the opportunity to recombine them for further analyses.

Acknowledgments

The first author, G.M., is a Marie-Curie COFUND postdoctoral fellow, co-founded by the European Commission and the University of Liege (ref. number: 600405). The work of the first author, G.M., was supported by a mobility fellowship provided by the European Science Foundation (ref. number: 3690) under the framework of the MOLTER Program (MOLEcular structures as drivers and tracers of TERrestrial C fluxes). For the Mount Gordon site, sample collection and analysis were supported by a UK Natural Environment Research Council Urgency Grant (NE/F00131X/ 1) held by S.H. Doerr. Patrick Lane, Petter Nyman, Richard Shakesby, Gary Sheridan, and Hugh Smith supported sample collection in Australia. S.H. Doerr acknowledges support during manuscript preparation via a *Leverhulme Research Fellowship* (RF-2016-456\2). All Authors thank two anonymous reviewers for their useful comments on the manuscript.

References

- 2009 Victorian Bushfires Royal Commission, 2010. Final Report. Melbourne, Australia: Government Printer for the State of Victoria. See <http://pandora.nla.gov.au/pan/96781/20100923-0223/www.royalcommission.vic.gov.au/Commission-Reports/Final-Report/Summary.html>
- Alexis, M.A., Rasse, D.P., Rumpel, C., Bardoux, G., Péchot, N., Schmalzer, P., Drake, B., Mariotti, A., 2007. Fire impact on C and N losses and charcoal production in a scrub oak ecosystem. *Biogeochemistry* 82, 201–216.
- Alexis, M.A., Rumpel, C., Knicker, H., Leifeld, J., Rasse, D., Péchot, N., Bardoux, G., Mariotti, A., 2010. Thermal alteration of organic matter during a shrubland fire: A field study. *Org. Geochem.* 41, 690–697. doi:10.1016/j.orggeochem.2010.03.003
- Ascough, P.L., Bird, M.I., Scott, A.C., Collinson, M.E., Cohen-Ofri, I., Snape, C.E., Le Manquais, K., 2010. Charcoal reflectance measurements: Implications for structural characterization and assessment of diagenetic alteration. *J. Archaeol. Sci.* 37, 1590–1599. doi:10.1016/j.jas.2010.01.020
- Ascough, P., Bird, M., Wormald, P., Snape, C., Apperley, D., 2008. Influence of pyrolysis variables and starting material on charcoal stable isotopic and molecular characteristics. *Geochim. Cosmochim. Acta* 72, 6090–6102.
- Belcher, C.M., Hudspith, V.A., 2016. The formation of charcoal reflectance and its potential use in post-fire assessments. *Int. J. Wildl. Fire* 25, 775–779. doi:10.1071/WF15185
- Bird, M.I., Ascough, P.L., 2012. Isotopes in pyrogenic carbon: A review. *Org. Geochem.* 42, 1529–1539. doi:10.1016/j.orggeochem.2010.09.005
- Bird, M.I., Gröcke, D.R., 1997. Determination of the abundance and carbon isotope composition of elemental carbon in sediments. *Geochim. Cosmochim. Acta* 61, 3413–3423. doi:10.1016/S0016-7037(97)00157-9
- Bird, M.I., Wynn, J.G., Saiz, G., Wurster, C.M., McBeath, A., 2015. The pyrogenic carbon cycle. *Annu. Rev. Earth Planet. Sci.* 43, 273–298. doi:10.1146/annurev-earth-060614-105038

- Bodí, M.B., Martín, D.A., Balfour, V.N., Santín, C., Doerr, S.H., Pereira, P., Cerdà, A., Mataix-Solera, J., 2014. Wildland fire ash: Production, composition and eco-hydro-geomorphic effects. *Earth-Science Rev.* doi:10.1016/j.earscirev.2013.12.007
- Brook, A., Wittenberg, L., 2016. Ash-soil interface: Mineralogical composition and physical structure. *Sci. Total Environ.* Ahead of Print. doi:10.1016/j.scitotenv.2016.02.123
- Certini, G., Nocentini, C., Knicker, H., Arfaioli, P., Rumpel, C., 2011. Wildfire effects on soil organic matter quantity and quality in two fire-prone Mediterranean pine forests. *Geoderma* 167–168, 148–155. doi:10.1016/j.geoderma.2011.09.005
- Chafer, C.J., Noonan, M., Macnaught, E., 2004. The post-fire measurement of fire severity and intensity in the Christmas 2001 Sydney wildfires. *Int. J. Wildl. Fire* 13, 227–240. doi:10.1071/WF03041
- Doerr, S.H., Shakesby, R.A., Smith, H.G., Sheridan, G.J., Lane N.J., Bell, T. & Blake, W.H. The catastrophic Victoria fires of 2009: extreme fire intensity, but only moderate soil burn severity? Reconstructing fire behaviour from soil, ash and seedbank survival data. Proceedings of the 6th International Conference on Forest Fire Research, 15-18th Nov. 2010, Coimbra, Portugal. Paper #279.
- Eckmeier, E., Gerlach, R., Skjemstad, J.O., Ehrmann, O., Schmidt, M.W.I., 2007. Minor changes in soil organic carbon and charcoal concentrations detected in a temperate deciduous forest a year after an experimental slash-and-burn. *Biogeosciences* 4, 377–383. doi:10.5194/bg-4-377-2007
- Forbes, M.S., Raison, R.J., Skjemstad, J.O., 2006. Formation, transformation and transport of black carbon (charcoal) in terrestrial and aquatic ecosystems. *Sci. Total Environ.* 370, 190–206. doi:10.1016/j.scitotenv.2006.06.007
- Francioso, O., Sanchez-Cortes, S., Bonora, S., Roldán, M.L.M.L., Certini, G., 2011. Structural characterization of charcoal size-fractions from a burnt *Pinus pinea* forest by FT-IR, Raman and surface-enhanced Raman spectroscopies. *J. Mol. Struct.* 994, 155–162. doi:10.1016/j.molstruc.2011.03.011

- González-Pérez, J.A., González-Vila, F.J., Almendros, G., Knicker, H., 2004. The effect of fire on soil organic matter-a review. *Environ. Int.* 30, 855–70. doi:10.1016/j.envint.2004.02.003
- Guo, Y., Bustin, R.M., 1998. FTIR spectroscopy and reflectance of modern charcoals and fungal decayed woods: implications for studies of inertinite in coals. *Int. J. Coal Geol.* 37, 29–53. doi:10.1016/S0166-5162(98)00019-6
- Halofsky, J.E., Hibbs, D.E., 2008. Determinants of riparian fire severity in two Oregon fires, USA. *Can. J. For. Res.* 38, 1959–1973. doi:10.1139/X08-048
- Harvey, O.R., Kuo, L.J., Zimmerman, A.R., Louchouart, P., Amonette, J.E., Herbert, B.E., 2012. An index-based approach to assessing recalcitrance and soil carbon sequestration potential of engineered black carbons (biochars). *Environ. Sci. Technol.* 46, 1415–1421. doi:10.1021/es2040398
- Hatton, P.-J., Chatterjee, S., Filley, T.R., Dastmalchi, K., Plante, A.F., Abiven, S., Gao, X., Masiello, C.A., Leavitt, S.W., Nadelhoffer, K.J., Stark, R.E., Bird, J.A., 2016. Tree taxa and pyrolysis temperature interact to control the efficacy of pyrogenic organic matter formation. *Biogeochemistry* 130, 103–116. doi:10.1007/s10533-016-0245-1
- Hudspeth, V.A., Belcher, C.M., Yearsley, J.M., 2014. Charring temperatures are driven by the fuel types burned in a peatland wildfire. *Front. Plant Sci.* 5, 714. doi:10.3389/fpls.2014.00714
- Kaufman, J.H., Metin, S., Saperstein, D.D., 1989. Symmetry breaking in nitrogen-doped amorphous carbon: Infrared observation of the Raman-active G and D bands. *Phys. Rev. B* 39, 13053.
- Knicker, H., Hilscher, A., González-Vila, F.J., Almendros, G., 2008. A new conceptual model for the structural properties of char produced during vegetation fires. *Org. Geochem.* 39, 935–939. doi:10.1016/j.orggeochem.2008.03.021
- Knox, K.J.E., Clarke, P.J., 2016. Measuring fire severity: Are canopy, understorey and below-ground measures coupled in sclerophyll forest fires? *Plant Ecol.* 217, 607–615. doi:10.1007/s11258-016-0609-6

- Madejová, J., 2003. FTIR techniques in clay mineral studies. *Vib. Spectrosc.* 31, 1–10.
doi:10.1016/S0924-2031(02)00065-6
- Masiello, C.A., 2004. New directions in black carbon organic geochemistry. *Mar Chem* 92, 201–213. doi:10.1016/j.marchem.2004.06.043
- Mastrolonardo, G., Rumpel, C., Forte, C., Doerr, S.H., Certini, G., 2015a. Abundance and composition of free and aggregate-occluded carbohydrates and lignin in two forest soils as affected by wildfires of different severity. *Geoderma* 245–246, 40–51.
doi:10.1016/j.geoderma.2015.01.006
- Mastrolonardo, G., Francioso, O., Di Foggia, M., Bonora, S., Forte, C., Certini, G., 2015b. Soil pyrogenic organic matter characterisation by spectroscopic analysis: a study on combustion and pyrolysis residues. *J. Soils Sediments* 15, 769–780. doi:10.1007/s11368-014-1034-x
- McBeath, A. V., Smernik, R.J., Krull, E.S., 2013. A demonstration of the high variability of chars produced from wood in bushfires. *Org. Geochem.* 55, 38–44.
doi:10.1016/j.orggeochem.2012.11.006
- Merino, A., Chávez-Vergara, B., Salgado, J., Fonturbel, M.T., García-Oliva, F., Vega, J.A., 2015. Variability in the composition of charred litter generated by wildfire in different ecosystems. *CATENA* 133, 52–63. doi:10.1016/j.catena.2015.04.016
- Michelotti, L.A., Miesel, J.R., 2015. Source material and concentration of wildfire-produced pyrogenic carbon influence post-fire soil nutrient dynamics. *Forests* 6, 1325–1342.
doi:10.3390/f6041325
- Nocentini, C., Certini, G., Knicker, H., Francioso, O., Rumpel, C., 2010. Nature and reactivity of charcoal produced and added to soil during wildfire are particle-size dependent. *Org. Geochem.* 41, 682–689. doi:10.1016/j.orggeochem.2010.03.010
- Ohlson, M., Dahlberg, B., Økland, T., Brown, K.J., Halvorsen, R., 2009. The charcoal carbon pool in boreal forest soils. *Nat. Geosci.* 2, 692–695. doi:10.1038/ngeo617

- Pansu, M., Gautheyrou, J., 2006. Handbook of Soil Analysis: Mineralogical, Organic and Inorganic Methods. Springer, New York.
- Pyle, L.A., Hockaday, W.C., Boutton, T., Zygourakis, K., Kinney, T.J., Masiello, C.A., 2015. Chemical and Isotopic Thresholds in Charring: Implications for the Interpretation of Charcoal Mass and Isotopic Data. *Environ. Sci. Technol.* 49, 14057–14064. doi:10.1021/acs.est.5b03087
- Randerson J.T., Chen Y., Van Der Werf G.R., Rogers B.M., Morton D.C., 2012. Global burned area and biomass burning emissions from small fires. *J. Geophys. Res. Biogeosci.* 117, G04012. doi:10.1029/2012JG002128
- Reisser, M., Purves, R.S., Schmidt, M.W.I., Abiven, S., 2016. Pyrogenic Carbon in Soils: A Literature-Based Inventory and a Global Estimation of Its Content in Soil Organic Carbon and Stocks. *Front. Earth Sci.* 4, 1–14. doi:10.3389/feart.2016.00080
- Rumpel, C., González-Pérez, J.A., Bardoux, G., Largeau, C., Gonzalez-Vila, F.J., Valentin, C., 2007. Composition and reactivity of morphologically distinct charred materials left after slash-and-burn practices in agricultural tropical soils. *Org. Geochem.* 38, 911–920. doi:10.1016/j.orggeochem.2006.12.014
- Santín, C., Doerr, S.H., Kane, E., Masiello, C., Ohlson, M., Preston C., de la Rosa, A., Dittmar, T., 2016a. Towards a global assessment of pyrogenic carbon from vegetation fires. *Global Change Biol.* 22, 76-91. doi:10.1111/gcb.12985
- Santín, C., Doerr, S.H., Merino, A., Bryant, R., Loader, N.J., 2016b. Forest floor chemical transformations in a boreal forest fire and their correlations with temperature and heating duration. *Geoderma* 264, 71–80. doi:10.1016/j.geoderma.2015.09.021
- Santín, C., Doerr, S.H., Shakesby, R.A., Bryant, R., Sheridan, G.J., Lane, P.N.J., Smith, H.G., Bell, T.L., 2012. Carbon loads, forms and sequestration potential within ash deposits produced by wildfire: New insights from the 2009 “Black Saturday” fires, Australia. *Eur. J. For. Res.* 131, 1245–1253. doi:10.1007/s10342-012-0595-8

- Scott, A.C., 2010. Charcoal recognition, taphonomy and uses in palaeoenvironmental analysis. *Palaeogeogr. Palaeoclimatol. Palaeoecol.* 291, 11–39. doi:10.1016/j.palaeo.2009.12.012
- Tatzber, M., Stemmer, M., Spiegel, H., Katzlberger, C., Haberhauer, G., Mentler, A., Gerzabek, M.H., 2007. FTIR-spectroscopic characterization of humic acids and humin fractions obtained by advanced NaOH, Na₄P₂O₇, and Na₂CO₃ extraction procedures. *J. Plant Nutr. Soil Sci.* 170, 522–529. doi:10.1002/jpln.200622082
- Wiechmann, M.L., Hurteau, M.D., Kaye, J.P., Miesel, J.R., 2015. Macro-particle charcoal C content following prescribed burning in a mixed-conifer forest, Sierra Nevada, California. *PLoS One* 10. doi:10.1371/journal.pone.0135014
- Wiedemeier, D.B., Abiven, S., Hockaday, W.C., Keiluweit, M., Kleber, M., Masiello, C.A., McBeath, A. V., Nico, P.S., Pyle, L.A., Schneider, M.P.W., Smernik, R.J., Wiesenberg, G.L.B., Schmidt, M.W.I., 2015. Aromaticity and degree of aromatic condensation of char. *Org. Geochem.* 78, 135–143. doi:10.1016/j.orggeochem.2014.10.002