



UNIVERSITÀ  
DEGLI STUDI  
FIRENZE

## FLORE

# Repository istituzionale dell'Università degli Studi di Firenze

### **The UK DCD Risk Score: A new proposal to define futility in donation-after-circulatory-death liver transplantation**

Questa è la Versione finale referata (Post print/Accepted manuscript) della seguente pubblicazione:

*Original Citation:*

The UK DCD Risk Score: A new proposal to define futility in donation-after-circulatory-death liver transplantation / Schlegel A.; Kalisvaart M.; Scalerà I.; Laing R.W.; Mergental H.; Mirza D.F.; Perera T.; Isaac J.; Dutkowski P.; Muiesan P.. - In: JOURNAL OF HEPATOLOGY. - ISSN 0168-8278. - ELETTRONICO. - 68:(2018), pp. 456-464. [10.1016/j.jhep.2017.10.034]

*Availability:*

The webpage <https://hdl.handle.net/2158/1177141> of the repository was last updated on 2020-07-08T01:55:36Z

*Published version:*

DOI: 10.1016/j.jhep.2017.10.034

*Terms of use:*

Open Access

La pubblicazione è resa disponibile sotto le norme e i termini della licenza di deposito, secondo quanto stabilito dalla Policy per l'accesso aperto dell'Università degli Studi di Firenze (<https://www.sba.unifi.it/upload/policy-oa-2016-1.pdf>)

*Publisher copyright claim:*

Conformità alle politiche dell'editore / Compliance to publisher's policies

Questa versione della pubblicazione è conforme a quanto richiesto dalle politiche dell'editore in materia di copyright.

This version of the publication conforms to the publisher's copyright policies.

La data sopra indicata si riferisce all'ultimo aggiornamento della scheda del Repository FloRe - The above-mentioned date refers to the last update of the record in the Institutional Repository FloRe

(Article begins on next page)

## Accepted Manuscript

The UK-DCD-Risk-Score: a new proposal to define futility in Donation after Circulatory Death liver transplantation

Andrea Schlegel, Marit Kalisvaart, Irene Scalera, Richard W Laing, Hynek Mergental, Darius F Mirza, Thamara Perera, John Isaac, Philipp Dutkowski, Paolo Muiesan

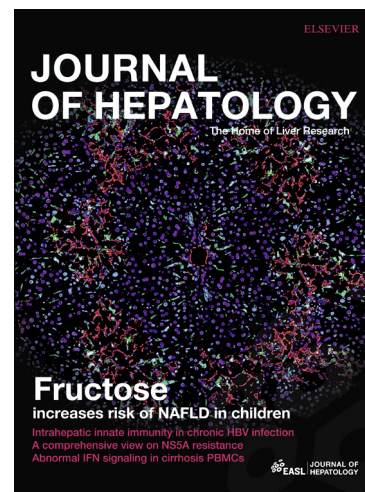
PII: S0168-8278(17)32432-7  
DOI: <https://doi.org/10.1016/j.jhep.2017.10.034>  
Reference: JHEPAT 6751

To appear in: *Journal of Hepatology*

Received Date: 23 February 2017  
Revised Date: 17 October 2017  
Accepted Date: 25 October 2017

Please cite this article as: Schlegel, A., Kalisvaart, M., Scalera, I., Laing, R.W., Mergental, H., Mirza, D.F., Perera, T., Isaac, J., Dutkowski, P., Muiesan, P., The UK-DCD-Risk-Score: a new proposal to define futility in Donation after Circulatory Death liver transplantation, *Journal of Hepatology* (2017), doi: <https://doi.org/10.1016/j.jhep.2017.10.034>

This is a PDF file of an unedited manuscript that has been accepted for publication. As a service to our customers we are providing this early version of the manuscript. The manuscript will undergo copyediting, typesetting, and review of the resulting proof before it is published in its final form. Please note that during the production process errors may be discovered which could affect the content, and all legal disclaimers that apply to the journal pertain.



## The UK-DCD-Risk-Score: a new proposal to define futility in Donation after Circulatory Death liver transplantation

Andrea Schlegel<sup>1</sup>, Marit Kalisvaart<sup>1</sup>, Irene Scalera<sup>1</sup>, Richard W Laing<sup>1</sup>, Hynek Mergental<sup>1</sup>, Darius F Mirza<sup>1</sup>, Thamara Perera<sup>1</sup>, John Isaac<sup>1</sup>, Philipp Dutkowski<sup>2</sup>, Paolo Muiesan<sup>1\*</sup>

<sup>1</sup> The Liver Unit, Queen Elizabeth University Hospital Birmingham, United Kingdom

<sup>2</sup> Department of Surgery and Transplantation, Swiss HPB Centre, University Hospital Zurich, Switzerland

Word count Abstract: 275

Word count Text (without references): 4526

Pages (without title page, abstract, acknowledgments, references): 13

Figures: 3

Tables: 4

Supplementary Tables: 4

Supplementary Figures: 4

### Correspondence:

Professor Paolo Muiesan<sup>\*</sup>  
Consultant Liver Transplant Surgeon  
The Liver Unit, Queen Elizabeth hospital Birmingham  
Edgbaston, Birmingham  
United Kingdom  
B15 2TH  
E-mail - [Paolo.Muiesan@uhb.nhs.uk](mailto:Paolo.Muiesan@uhb.nhs.uk)  
Telephone - 0044 12137 1  
Fax - 0044 12141 41833

### Detailed authors contribution:

Study design: AS, PD, PM  
Data collection: AS, MK, IR, RWL  
Data analysis: AS, PD, PM  
Manuscript writing: AS, PD, PM  
Structured Discussion: AS, TP, HM, DFM  
Manuscript revision: AS, JI, DFM, PD, PM

**Key words:** Donation after circulatory death, risk assessment, graft loss, morbidity.

### Abbreviations

ALT: Alanine Aminotransferase; AUC: area under the receiver operating characteristic curve statistic; BMI: Body Mass Index; BAR score: Balance of risk score; BMI: Body-Mass-Index; CIT: Cold Ischemia Time; CVA: cerebrovascular accident; DAA: direct-acting antiviral medications; DBD: Donation after Brain Death; DCD: Donation after circulatory Arrest; DCD-RI: DCD-Risk Index; DM: Diabetes Mellitus; DRI: Donor Risk Index; EAD: Early Allograft Dysfunction; ECMO: Extracorporeal membrane oxygenation; UK: United Kingdom; UNOS: United Network of organ sharing; fDWIT: Functional Donor Warm Ischemia Time; HAS: Hepatic Artery Stenosis; HAT: Hepatic Artery Thrombosis; HBV: Hepatitis B virus; HCC: Hepatocellular Carcinoma; HCV: Hepatitis C virus; ICU: Intensive Care Unit; IC: Ischemic Cholangiopathy; IT: Implantation Time; KCH: Kings College Hospital; MAR: Missing at random; MELD: Model of End Liver Disease; MI: Multiple Imputation; MFP: multivariable fractional polynomial approach; MVN: Multivariate normal regression; NHS: National Health Service; NHSBT: National Health Service Blood and Transplant; OLT: Orthotopic Liver Transplantation; PNF: Primary Non Function; UCLA: University of California at Los Angeles; UHB: University Hospitals Birmingham; UK: United Kingdom; UKELD: United Kingdom model of End stage Liver Disease; NMLP: Normothermic Machine Liver Perfusion; HMP: Hypothermic Machine Perfusion; HOPE: Hypothermic Oxygenated Perfusion;

## Structured Abstract

**Objectives:**

To design a new score on risk assessment in liver transplantation donated after circulatory death (DCD) based on donor and recipient parameters.

**Background:**

Primary-non-function (PNF) and ischemic cholangiopathy (IC) are the most feared complications following DCD liver transplantation.

**Methods:**

Using the United Kingdom (UK) national DCD database, a risk analysis was performed in adult recipients of DCD liver grafts in UK between 2000 and 2015 (n=1153). A new risk score was calculated (UK-DCD-Risk-Score) on the basis of regression analysis, and validated using the UNOS (United Network for Organ Sharing) database (n=1617) and our own DCD liver transplant database (n=315). Finally, the new score was compared with two other available prediction systems, the DCD risk scores from UCLA and Kings-College-Hospital, London.

**Results:**

Seven strongest predictors of DCD graft survival were identified: functional donor warm ischemia, cold ischemia, recipient MELD, recipient age, donor age, previous OLT, and donor body-mass-index (BMI). A combination of these risk factors (UK-DCD-Risk-Model) stratified best recipients in terms of graft survival in the entire UK-DCD-database as well as in the UNOS and in our own DCD population. Importantly, the UK-DCD-Risk-Score significantly predicted graft loss due to PNF or IC in the futile group (>10 score points). The new prediction model demonstrated a better C statistic of 0,79, compared to the two other available systems (0,71 and 0,64; respectively).

**Conclusions:**

The UK-DCD-Risk-Score is a reliable tool to detect high risk and futile combinations of donor and recipient factors in DCD liver transplantation. It is simple to use and offers a great potential to better decide which DCD graft should be rejected or may benefit from functional assessment and further optimization by machine perfusion.

**Lay Summary:**

Here we provide a new prediction model for graft loss in donation after circulatory death

(DCD) liver transplantation. Based on national data from United Kingdom (UK), the new UK-DCD-Risk Score involves the following 7 clinical relevant risk factors: donor age, donor BMI, functional donor warm ischemia, cold storage, recipient age, recipient lab MELD and retransplantation. Three risk classes were defined: low risk (0-5points), high risk (6-10 points) and futile (>10points). This new model stratified best in terms of graft survival, compared to other available models. Futile combinations (>10 points) achieved an only very limited one and five-year graft survival of 37% and less than 20% respectively. In contrast, low risk combinations ( $\leq 5$ points) showed an excellent graft survival. The new model, is easy to calculate at the time of liver acceptance and may help to decide, which risk combination will benefit from additional graft treatment or which DCD liver should be declined for a certain recipient.

## Introduction

Driven by organ scarcity and the need to decrease waiting list mortality, liver transplant professionals worldwide have expanded the donor organ pool[1]. In this context, livers from donation after circulatory arrest donors (DCD) are increasingly used for transplantation and several countries implemented DCD programs[2–4]. However, DCD organs may carry further risk due to the additional donor warm ischemia leading potentially to a higher rate of severe complications, such as primary non function (PNF) of the graft and intrahepatic ischemic cholangiopathy (IC) [5]. Specific donor and recipient risk factors are therefore critically evaluated by transplant centres [6][7–9]. For example, graft cold ischemia, donor age and donor body-mass-index (BMI) or recipient MELD score have all been reported to impact on graft survival[7]. Careful selection of grafts and recipients appears therefore decisive for outcome. Data analysis from Kings College Hospital (KCH) underline this fact, showing excellent low rates of IC (2.5%), when the overall risk is low and warm ischemia time is kept short with an average of functional donor warm ischemia time (fDWIT) of 16 minutes[10,11]. Such results stand in contrast to other European centres and to previous analyses of US data[12–14], which report longer donor warm ischemia times with higher incidence of IC and graft loss[15]. The combination of too dangerous risk originating from 3 sources, e.g. donor, graft and recipient is however unclear.

The intention of this study was therefore to search for an easily applicable score system, based on a few independent donor and recipient key factors, with the highest possible accuracy in prediction of complications and graft loss after DCD liver transplantation.

## Methods

### 1) Study Design and Patients

After approval by the National Health System (NHS) institutional review board in the United Kingdom, records of all adult ( $\geq 18$  years) DCD recipients transplanted for chronic liver disease were extracted from an NHS Blood and Transplant (NHSBT) Analysis and Research file from January 2000 through December 2015 (national UK cohort)[16]. Two other DCD cohorts were used for validation. First, adult DCD cases were extracted from the United Network for Organ Sharing (UNOS) database from December, 1987 through September, 2010, after approval by the University of Washington institutional review board (UNOS cohort). And second, we analysed our own institutional DCD database, which included patients transplanted from January 2005, to December 2015 (Birmingham cohort). To reduce confounding variables, paediatric and partial transplants (split and living donor liver transplantation), donation after brain death (DBD) and combined liver transplants, were excluded. Recipients with lost follow up were excluded from the analysis. Patients with exception points (e.g., hepatocellular cancer within Milan criteria) were included in the analysis. Importantly, pretransplant MELD score was calculated without inclusion of those exception points (laboratory MELD). The primary outcome measured for regression analysis was one-year graft survival (least missing entries). The final analysis included 1153 patients. The two validation cohorts, UNOS and Birmingham, consisted of 1861 and 315 DCD transplant cases.

We defined ischemic cholangiopathy (IC) in this analysis on the basis of radiological findings, e.g. intrahepatic or hilar biliary strictures and dilatations, occurring in the absence of hepatic artery stenosis (HAS) or thrombosis (HAT), portal vein thrombosis, chronic ductopenic rejection, or recurrent PSC. Overall incidence of biliary complications, extrahepatic strictures, IC and biliary leakages for our DCD transplants from Birmingham are described in detail in **Supplementary Table 5**.

## 2) Statistical Analysis

To establish a clinically valid regression model, we choose parameters, which are easily

available for surgeons at each DCD transplant centre worldwide. Our aim was, therefore, to combine donor, graft, and recipient factors in one practical score system on post transplant graft survival. All factors should be easily available prior to transplantation. Accordingly, significant variables with impact on outcome after DCD liver transplantation (with a  $p$ -value $<0.25$ ) were considered further were selected (6 metric, 1 dichotomous), for example, donor age, fDWIT, cold ischemia, laboratory MELD score, recipient age and retransplantation[17–20]. In an attempt to increase information on graft quality, donor body mass index (BMI) was also included as surrogate marker of steatosis and other metabolic disorders[21]. Functional donor warm ischemia (fDWIT) in UK is defined as time between systolic blood pressure below 50 mmHg and cold aortic organ flush[22].

For candidate predictors with less than 60% missing values (e.g. recipient lab MELD score pre-transplant (32/1153; 2.8% missing), fDWIT (464/1153; 40.2%) and cold ischemia of the graft (89/1153; 7.7% missing), we performed multiple imputation (MI) using multivariate normal regression (MVN), imputing a total of 20 datasets ( $n=24213$ )[23]. The MVN method assumes that the data are missing at random (MAR), which appears as a less restrictive assumption than that required by complete case analysis and MVN has been shown to be valid whether or not all imputed variables follow a normal distribution[24]. In each of the imputed datasets we used a backward stepwise approach for the multivariable logistic regression with  $p$ -values ranging between  $<0.001$  and  $>0.05$  as inclusion and exclusion thresholds, respectively. The strongest predictors for one-year graft survival after DCD liver transplantation, that were selected in 75% to 80% of the imputation models were included in the final multivariable model. Backward elimination is generally preferred as an automated predictor selection procedure because it takes correlations among predictors into calculation [23,25–31]. The imputed data sets were combined and the point system was developed to enhance clinical applicability according to the Framingham risk scheme (**Table 2**)[32]. For each predictor, the median of all values below (Midpoint  $W_{1reference} - W_{7reference}$ ) and

above the threshold has been calculated. The Midpoint for the cohort below each threshold ( $W_{i-7}$ reference) is subtracted from the midpoint of all values above the threshold. The factor  $\beta$  is multiplied with the difference ( $W_{ij}$ -Wireference), separately for each factor[32].

### 3) Performance and Validation of the new prediction model

The performance of the prediction model in the derivation cohort was evaluated by examining measures of discrimination and calibration. Discrimination is the ability of the risk score to differentiate between patients who do and do not experience an event (in our case, the occurrence of graft loss after DCD liver transplantation). This measure was quantified by calculating the area under the receiver operating characteristic curve statistic (AUC). Calibration reflects the agreement between predicted probabilities from the model and observed outcomes. We used the Hosmer–Lemeshow test to statistically determine the extent of agreement between the predicted and the observed probabilities. We performed an internal validation using a bootstrapping procedure. This approach uses the entire data in order to develop the prediction model and in addition accounts for model overfitting or uncertainty compensating for overoptimism in the final prediction model. The bootstrapping in the current study was performed using 500 bootstrap resamples, each time selecting variables and developing a model within the sample. The new prediction model was compared to available systems from UCLA (DCD risk score UCLA)[17] and Kings College Hospital (KCH) named as DCD Risk Index (DCD - RI)(**Supplementary Table 4**)[33]. Furthermore, the model was validated externally in the UNOS database and internally, in our own population from Birmingham, where we specifically evaluate the predictive value of our new score, excluding retransplantations. Statistical analysis was performed using SPSS 23.

## Results

1) Are there differences between the three study populations from UK, UNOS and Birmingham?

Following eligibility criteria, 1153 cases were available from the UK database, and 1863 were selected from the UNOS database. Our institutional database included 315 DCD transplants. Median follow-up accumulated to 865 days in the United Kingdom, as compared to 600 days in United States and 936 days in our population. No differences were found between the three populations in terms of recipient age (median 55 vs. 54 vs. 58 years), recipient BMI (27.0 vs. 27.4 vs. 27.0 kg/m<sup>2</sup>), donor BMI (median 25.0 vs. 25.1 vs. 25 kg/m<sup>2</sup>) and cold ischemia time (median 7.1 vs. 7.0 vs. 7.0 hours). Major differences (UK data vs. United States vs. own data) were noted regarding donor age (median 49 vs. 34 vs. 51 years) and fDWIT (median 17 vs. 14 vs. 17 min). In the UNOS cohort, centre dependent variations exist on the time of initiation of donor warm ischemia. Most US centers, however, define it also as fDWIT, initiated after a specified period of time during sustained hypotension (systolic blood pressure < 50mmHg)[14]. The Balance of Risk score (BAR score) at transplantation was slightly higher in UNOS compared to the other cohorts (median 5 vs. 7 vs. 5 points), corresponding to the slightly higher MELD score in UNOS regions when compared to the European population (median 15 vs. 16.4 vs. 13 points)[18]. In addition, the percentage of retransplantations at the time of DCD transplant was comparable in UK and UNOS, while all candidates in our own population were primary transplants (11.3% vs. 11.3% vs. 0%, **Table 1**).

2) Which are the key prediction factors for graft survival after DCD liver transplantation?

Initial calculations were performed in the large DCD database from UK and tested, in a next step, in the UNOS and our institutional DCD population. We evaluated 43 candidate predictors. The median number of missing values per candidate was 6 (IQR 2.5-9.5). Five variables were excluded, due to more than 60% missing values, which involved AST, donor

albumin, agonal donor phase, arterial donor pressure and recipient hospital status at transplant. Among the 38 remaining candidate variables 28 had complete data and 10 contained <60% missingness and were subjected to the multiple imputation procedure. The full multivariable prediction model based on the backward stepwise approach and revealed seven parameters as significant predictors for graft loss: donor age and BMI, fDWIT, cold ischemia time, recipient age, MELD score and previous liver transplantation (**Table 2**). Recipient BMI was not identified as independent predictor. Using the significant regression coefficients, the UK-DCD-Risk score was calculated with a range from 0 to 27 points reflecting an exponential increase in one-year graft loss. The strongest predictor was retransplantation (0 or 9 points), followed by functional donor warm ischemia (0 or 3 or 6 points), recipient age (0 or 3 points), donor BMI (0 or 3 points), donor age (0 or 2 points), cold ischemia time (0 or 2 points), and lab MELD (0 or 2 points; **Table 2**). Internal validation yielded a c-statistic of 0.79 (95%CI: 0.744-0.839) and the p-value for the Hosmer and Lemeshow goodness of fit test ranged from 0.143 to 0.506 in the 20 imputed data sets, corresponding to a well-calibrated model. Internal validation of the model using bootstrapping procedure revealed minimal optimism of 0.00005 (95%CI: 0.00574 to 0.064).

3) How does the newly developed risk score compare to other available prediction systems?

In an attempt to compare predictability of outcome, c-statistics of other score systems were assessed in the UK database referred to graft survival. For both available prediction models in DCD liver transplantation, the UCLA-DCDscore [17] and the KCH-DCD-RI from Kings College Hospital[33], the areas under the receiver operator characteristic curves (AUC) were 0.71 and 0.64, respectively (**Figure 1**). These findings were confirmed by a superior AUC for the new DCD model in our own cohort in Birmingham (AUC=0,754), compared to the UCLA-DCDscore (AUC=0.639) and the KCH-DCD RI (AUC=0.583) (**Supplementary**

**Figure 3**). Accordingly, the new UK-DCD-Risk score showed a more significant decrease in graft survival per increasing score cluster (0–5, 6–10, >10; **Figure 1 & Supplementary Figure 1**), when compared to both other models. Of note, the BAR score was also inferior in prediction of graft survival after DCD liver transplantation in this dataset (**Supplementary Figure 1**). Additional analysis showed that cumulative 1-year graft survival per each single score point followed an exponential increase for the new score model above a certain threshold of approximately 10 points (**Figure 3**). Both other DCD scores failed to predict cumulative graft loss at each single score point (**Figure 3**). Of note, UK DCD Score grouping at this threshold ( $\leq 10$  vs.  $>10$ ) splitted graft survival best as compared to the two other scores, that is, DCD Score from UCLA ( $\leq 4$  vs.  $>4$ ) and DCD-RI from KCH ( $\leq 4$  vs.  $>4$ ) (**Figure 3**). The newly developed score showed a very good positive prediction value of 71% and 86.1% in UK and UNOS. The specificity was 0.95.

4) Is the new prediction model valid in other DCD cohorts?

External validation in the UNOS database, confirmed the excellent discrimination between acceptable outcome below the threshold of 10 points and significantly lower graft survival in the futile group with more than 10 UK DCD Score points (**Figure 1&3**). Of note, recipients in the futile group ( $>10$  points) experienced a very high risk for graft loss of more than 60% in one year and  $> 80\%$  in 5 years. In addition, candidates in the high-risk group ( $>5$  to 10 score points) lost the graft in 18% and 40% in one and five years, compared to the lowest risk group (0-5 points), where 5% and 15% of DCD livers were lost in one and five years, respectively (**Figure 1&2**). Importantly, UK DCD Score ranking was also useful in our own cohort, where the strongest predictor, retransplantation, was not available ( $p<0.0001$ ; **Figure 2**). Exclusion of cases with a UK DCD risk score of more than 10 points from a DCD liver transplant due to expected poor prognosis would refer to 13.4% of patients in the UK (93/689), to 14.7 % of cases in the United States (237/1617) and to 11.4% of cases in our

population (34/300) (**Figure 1&2**).

5) How does the new score system correlate with post-transplant complications and morbidity?

While numerous risk factors have been described previously for DCD liver transplantation, prediction of ischemic cholangiopathy (IC) or also primary non-function (PNF) remains unsolved. We were therefore particularly interested to identify a combination of key factors with significant impact on graft loss due to IC or PNF. Donor-recipient constellations with more than 10 score points (futile group) experienced significantly more graft loss due to PNFs and IC in both large DCD cohorts in UK and UNOS ( $p<0.0001$ ;  $p=0.0001$ ; **Table 4**). In addition, recipients in the high risk and futile group developed significantly more often vascular complications, e.g. hepatic artery thrombosis (HAT), leading to graft failure in numerous cases in all cohorts (**Table 4**). In order to evaluate liver function and other important post-transplant complications and general morbidity, we analysed our institutional DCD cohort in accordance with the three clusters of the new prediction model. Increasing risk is transmitted by increasing score points resulting in significantly impaired early liver function (INR day one: 1.5 vs. 1.7 vs. 2.0,  $p=0.0001$ ,  $p=0.0005$ ; **Supplementary Figure 4**) and higher liver enzyme release (median peak ALT during first week after transplant (787 vs. 1116 vs. 1906,  $p=0.0004$ ;  $p=0.0002$ ). In addition, ICU and hospital stay after DCD transplantation increased significantly from low risk to futile score group (**Supplementary Figure 4**). Overall post-transplant morbidity was summarized by the Comprehensive Complication Index (CCI)[34], where the new DCD prediction score was associated with a significantly increased median CCI throughout the three risk groups ( $p<0.0001$ ,  $p=0.0093$ ; **Supplementary Figure 4**).

## Discussion

Our search for a new score to optimize justice and utility for DCD liver allocation has led to several new findings. First, by combining a few major donor and recipient parameters, we developed a simple score system which best stratifies recipient graft loss after DCD liver transplantation, as compared to other recent developed prediction concepts. Second, this score proved to be highly discriminatory for primary non-function (PNF) and ischemic cholangiopathy (IC) in both, the national UK (NHSBT) and US (UNOS) databases. Third, our calculations represent the largest analysis of DCD liver transplant recipients. Fourth, the new model correlates well with post transplant morbidity throughout all three risk clusters.

Risk assessment in liver transplants has been repeatedly addressed by several studies but is usually limited to the main endpoints mortality or graft loss. In addition, it appears arbitrary which thresholds and which combinations of parameters in a critical ill patient predict outcome. Currently, the most convincing calculations of risk prediction in LT base on a relatively limited number of key parameters leading to varying score points according to their regression coefficients. The sum of such scores expresses the total risk up to a risk threshold (balance principle)[18,19,35]. However, while risk scores have been implemented in DBD liver transplantation, their application in DCD liver transplants is limited, as the DCD population is by far smaller in most countries, and parameters depicting higher graft injury are less well defined. Importantly, graft loss due to PNF and IC is a major and much more relevant problem in DCD liver transplantation in contrast to DBD liver transplantation, and justifies from our point a new effort to find a formula of their prediction, based on a national analysis.

Minimizing the sum of risk is an old principle in surgery, and many transplant professionals automatically aim to allocate DCD livers to low MELD primary liver transplant candidates [10,22]. This established approach has led to a significantly improved early patient survival after DCD grafting[12,22]. However, the precise impact of different donor/recipient

combinations on graft failure is unclear. Two groups have developed models to predict the likelihood of graft survival after DCD liver transplantation[17,33]. In one detailed analysis, Khorsandi et al identified six donor, graft and recipient factors to predict graft failure after transplantation by the DCD-RI, which combines fDWIT, duration of donor hepatectomy, cold ischemia time, recipient MELD, underlying liver disease and retransplantation[33]. DCD transplant cases are not equally distributed to the three risk clusters of this score from KCH. In contrast to the lowest risk group, which includes only a very small number of DCD transplant cases (11.5%; 69/598), almost 40% are allocated to the highest risk group (235/598) and majority of DCD transplantations are classified into the “standard” risk group (50%; 294/598). Based on the number of score points allocated to each case at parameter cut-offs, the KCH DCD – RI showed inferior prediction in terms of graft loss. For example, one main risk factor in DCD liver transplantation, the fDWIT, contributes to only 1 score point, when ranging above 25 minutes (53/677 in UK DCD cohort, 7.8%). According to this score, majority of DCD livers receive zero points for an already prolonged fDWIT of up to 25 minutes (624/677; 92.2% of UK DCD cohort). A similar picture occurs from the parameter cold ischemia time, where the maximum of only 1 parameter point is distributed, when exceeding 10 hours. In UK only, a few DCD grafts experience such long storage times (67/1153; 5.8 %). In contrast, majority of points (three) are allocated to recipients with hepatitis C virus infection (HCV), alcohol related liver disease (ALD), cryptogenic liver cirrhosis or Budd-Chiari-Syndrome as indication for liver transplantation. Such parameters, alone may not predict graft loss based on DCD-related complications (PNF and IC), but due to recurrence of the underlying disease. In addition, three score points are allocated to DCD liver recipients with an elevated lab MELD of >25 points, which appears only in a limited number of DCD transplantations in UK (59/691; 8.5%). Thus, the DCD-RI from KCH seems less suitable to stratify post transplant graft survival when compared to the new UK DCD risk score.

Another risk model has been calculated to identify risk combinations, the UCLA-DCDScore, being a combination of 6 variables, e.g. donor HBV-core antibody positivity and functional warm ischemia (MAP<60mmHg to flush), cold storage time, recipient MELD, recipient BMI, retransplantation and underlying liver disease in the recipient [17]. The highest predictive factor with 3 points was HCV positivity combined with hepatocellular carcinoma (HCC) in this score, which may end up predicting graft loss due to HCV recurrence rather than PNF or IC. Secondly, the impact of HCV positivity will change in the near future due to the direct-acting antiviral medications (DAA) [36]. In addition, important predictors of early graft failure, e.g. fDWIT contributed only with one score point. An additional score factor, selected by the authors of the UCLA-DCDScore, published in 2011, was donor HBV-core antibody positivity, which is expressed in only very few cases in the UK DCD cohort (14/1153; 1.2%). Thus, the UCLA-DCDScore was also inferior in predicting graft survival (Figure 3). To develop a meaningful prediction model, ideally this should base on clinically relevant score parameters, which are of great importance in all countries with DCD liver transplantation[35,37,38].

In contrast to the above-mentioned calculations, our prediction model discriminated best in terms of graft survival below and above a cut-off of 10 (Table 4; Figure 1-4). Based on this, donor - recipient combinations with more than 10 points are exposed to a high risk of graft loss due to clinically relevant and DCD related complications, such as PNF or IC (Table 4). In addition, the new model significantly correlates with post transplant morbidity.

Our model has also shortcomings. First, we failed to include graft steatosis in our calculation due to limited donor liver biopsies in the UK. Nevertheless, a correlation of BMI and steatosis has been shown in a recent study [39], and we have been able to demonstrate donor BMI as independent predictor.

Second, most DCD recipients in UK have a low MELD score at time of transplantation (median lab MELD 15 points), because DCD liver allocation is excluded from

MELD allocation. Third, cut-off definitions for higher risk based on graft survival deterioration with however further impact on complications. For example, candidates in the high-risk group (6 -10 score points) are exposed to significantly higher rate of graft loss due to IC. This high-risk group would therefore, benefit from a graft treatment prior to implantation[40]. In this context, machine perfusion approaches such as hypothermic oxygenated perfusion (HOPE) have been previously shown to reduce reperfusion injury and intrahepatic biliary complications after transplantation of human DCD livers[41–43]. In addition, ex-situ graft evaluation during normothermic or hypothermic machine liver perfusion might be a useful tool to test liver viability, though better markers of graft function during these approaches are urgently needed[44–46].

One of the advantages of UK DCD risk score is that it derives from objective factors, readily available at the time of an organ offer, with the exception of warm and cold ischemia. However, as the liver retrieval starts and the fDWIT becomes available, the score can be recalculated with a fairly precise prediction of cold ischemia. At this stage, the score values may suggest a different decision regarding the use of the graft and/or the choice of a different local recipient. In the future, we will calculate the score system at organ offer. When donor/recipient combinations result in more than 10 points, we will either try to find a different recipient to decrease the overall risk and secondly perform graft treatment by machine perfusion prior to implantation. In addition, future models should also consider the amount of graft steatosis and the impact on the score threshold whether to accept a DCD liver for a certain recipient or not[47]. Though more reliable methods of fat quantification are urgently needed, analysis of graft biopsies provide additional information on the amount of steatosis and therefore help to decide which DCD liver to accept or how to adapt the preservation technique for a specific risk combination. Due to the fact that important risk parameters, e.g. warm ischemia time, are frequently missing or incomplete in nationwide databases, further multicentre cohort studies are required to refine existing and new scoring

systems. More specifically, an outcome study including DCD transplants from multiple centres in Europe and US, has been initiated and will enable us to first provide another validation of our new model and second to demonstrate the effective relation between the number of risk points per DCD case and specific complications in the recipient.

In summary, we believe that the UK DCD Risk Score may be a very practical and new guidance for allocation of a specific organ to a recipient, and helps also to decide which DCD liver requires processing with a new preservation technology, including machine perfusion. This would potentially help to implement such expensive approaches more specifically.

## Tables

**Table 1:** Donor, graft and recipient characteristics in the three DCD cohort in UK, UNOS and in our centre in Birmingham

**Table 2:** Development of the new Prediction Score based on multivariate Regression Analysis

**Table 3:** Potential Combinations of additional Key risk factors providing a UK DCD Risk score  $\leq 10$  or  $> 10$  points

**Table 4:** Etiology of graft loss according to the UK DCD Risk score in the UK, UNOS and Birmingham DCD cohort

**Supplementary Table 1:** Donor, graft and recipient characteristics in UK according to the three score clusters

**Supplementary Table 2:** Donor, graft and recipient characteristics in UNOS according to the three score clusters

**Supplementary Table 3:** Donor, graft and recipient characteristics in Birmingham according to the three score clusters

**Supplementary Table 4:** Comparison of score parameter and corresponding score points

### Disclosure

The authors declare that they have nothing to disclose. The data reported here have been supplied partially by the (NHSBT) and the United Network for Organ Sharing (UNOS) as the contractor for the Organ Procurement and Transplantation network. The interpretation and reporting of these data are the responsibility of the authors and in no way, should be seen as an official policy of or interpretation by the NHSBT or Organ Procurement and Transplantation network or the British or US Government.

### Acknowledgment

Authors are very grateful for the support by Dr. Elisa Allen and Catherine Hopkinson, both working for the Department of Statistics and Clinical Studies, at NHS Blood and Transplant, who kindly provided the national DCD data, following official approval as stated above.

### References

- [1] Monbaliu D, Pirenne J, Talbot D. Liver transplantation using Donation after Cardiac

- Death donors. *J Hepatol* 2012;56:474–85. doi:10.1016/j.jhep.2011.07.004.
- [2] Yamamoto S, Wilczek HE, Duraj FF, Groth CG, Ericzon BG. Liver transplantation with grafts from controlled donors after cardiac death: A 20-year follow-up at a single center. *Am J Transplant* 2010;10:602–11. doi:10.1111/j.1600-6143.2009.02965.x.
- [3] Abbass AA, Abouljoud M, Yoshida A, Kim DY, Slater R, Hundley J, et al. Biliary complications after orthotopic liver transplantation from donors after cardiac death: Broad spectrum of disease. *Transplant Proc* 2010;42:3392–8. doi:10.1016/j.transproceed.2010.07.099.
- [4] Merion RM, Pelletier SJ, Goodrich N, Englesbe MJ, Delmonico FL. Donation after cardiac death as a strategy to increase deceased donor liver availability. *Ann Surg* 2006;244:555–62. doi:10.1097/01.sla.0000239006.33633.39.
- [5] Callaghan CJ, Charman SC, Muiesan P, Powell JJ, Gimson AE, van der Meulen JHP, et al. Outcomes of transplantation of livers from donation after circulatory death donors in the UK: a cohort study. *BMJ Open* 2013;3:e003287. doi:10.1136/bmjopen-2013-003287.
- [6] Foley DP, Fernandez LA, Levenson G, Anderson M, Mezrich J, Sollinger HW, et al. Biliary complications after liver transplantation from donation after cardiac death donors: an analysis of risk factors and long-term outcomes from a single center. *Ann Surg* 2011;253:817–25. doi:10.1097/SLA.0b013e3182104784.
- [7] De Vera ME, Lopez-Solis R, Dvorchik I, Campos S, Morris W, Demetris AJ, et al. Liver transplantation using donation after cardiac death donors: Long-term follow-up from a single center. *Am J Transplant* 2009;9:773–81. doi:10.1111/j.1600-6143.2009.02560.x.
- [8] Firl DJ, Hashimoto K, O'Rourke C, Diago-Usó T, Fujiki M, Aucejo FN, et al. Impact of donor age in liver transplantation from donation after circulatory death donors: A decade of experience at Cleveland Clinic. *Liver Transplant* 2015;21:1494–503. doi:10.1002/lt.24316.
- [9] Jay CL, Lyuksemburg V, Ladner DP, Wang E, Caicedo JC, Holl JL, et al. Ischemic Cholangiopathy After Controlled Donation After Cardiac Death Liver Transplantation A Meta-analysis. *Ann Surg* 2011;253:259–64. doi:10.1097/SLA.0b013e318204e658.
- [10] DeOliveira ML, Jassem W, Valente R, Khorsandi SE, Santori G, Prachalias A, et al. Biliary complications after liver transplantation using grafts from donors after cardiac death: results from a matched control study in a single large volume center. *Ann Surg* 2011;254:716–22-3. doi:10.1097/SLA.0b013e318235c572.
- [11] Doyle MBM, Collins K, Vachharajani N, Lowell J a, Shenoy S, Nalbantoglu I, et al. Outcomes Using Grafts from Donors after Cardiac Death. *J Am Coll Surg* 2015;221:142–52. doi:10.1016/j.jamcollsurg.2015.03.053.
- [12] Dubbeld J, Hoekstra H, Farid W, Ringers J, Porte RJ, Metselaar HJ, et al. Similar liver transplantation survival with selected cardiac death donors and brain death donors. *Br J Surg* 2010;97:744–53. doi:10.1002/bjs.7043.
- [13] Maheshwari A, Maley W, Li Z, Thuluvath PJ. Biliary complications and outcomes of liver transplantation from donors after cardiac death. *Liver Transpl* 2007;13:1645–53. doi:10.1002/lt.21212.
- [14] Mateo R, Cho Y, Singh G, Stapfer M, Donovan J, Kahn J, et al. Risk factors for graft survival after liver transplantation from donation after cardiac death donors: An analysis of OPTN/UNOS data. *Am J Transplant* 2006;6:791–6. doi:10.1111/j.1600-6143.2006.01243.x.
- [15] Taner CB, Bulatao IG, Perry DK, Sibulesky L, Willingham DL, Kramer DJ, et al. Asystole to cross-clamp period predicts development of biliary complications in liver transplantation using donation after cardiac death donors. *Transpl Int* 2012;25:838–46. doi:10.1111/j.1432-2277.2012.01508.x.

- [16] Johnson RJ, Bradbury LL, Martin K, Neuberger J. Organ donation and transplantation in the UK-the last decade: a report from the UK national transplant registry. *Transplantation* 2014;97 Suppl 1:S1–27. doi:10.1097/01.TP.0000438215.16737.68.
- [17] Hong JC, Yersiz H, Kositamongkol P, Xia VW, Kaldas FM, Petrowsky H, et al. Liver transplantation using organ donation after cardiac death: a clinical predictive index for graft failure-free survival. *Arch Surg* 2011;146:1017–23. doi:10.1001/archsurg.2011.240.
- [18] Dutkowski P, Oberkofler CE, Slankamenac K, Puhan MA, Schadde E, Mullhaupt B, et al. Are there better guidelines for allocation in liver transplantation? A novel score targeting justice and utility in the model for end-stage liver disease era. *Ann Surg* 2011;254:745–53; discussion 753. doi:10.1097/SLA.0b013e3182365081.
- [19] Rana A, Hardy MA, Halazun KJ, Woodland DC, Ratner LE, Samstein B, et al. Survival outcomes following liver transplantation (SOFT) score: a novel method to predict patient survival following liver transplantation. *Am J Transpl* 2008;8:2537–46. doi:10.1111/j.1600-6143.2008.02400.x.
- [20] Feng S, Goodrich NP, Bragg-Gresham JL, Dykstra DM, Punch JD, DebRoy M a, et al. Characteristics associated with liver graft failure: the concept of a donor risk index. *Am J Transplant* 2006;6:783–90. doi:10.1111/j.1600-6143.2006.01242.x.
- [21] Gaba RC, Grace Knuttinen M, Brodsky TR, Palestrant S, Omene BO, Owens CA, et al. Hepatic steatosis: Correlations of body mass index, CT fat measurements, and liver density with biopsy results. *Diagnostic Interv Radiol* 2012;18:282–7. doi:10.4261/1305-3825.DIR.4958-11.2.
- [22] Laing RW, Scalera I, Isaac J, Mergental H, Mirza DF, Hodson J, et al. Liver transplantation using grafts from donors after circulatory death: A propensity-matched study from a single centre. *Am J Transplant* 2016:n/a-n/a. doi:10.1111/ajt.13699.
- [23] Bennett D a. How can I deal with missing data in my study? *Aust N Z J Public Health* 2001;25:464–9. doi:10.1111/j.1467-842X.2001.tb00294.x.
- [24] Wood AM, White IR, Royston P. How should variable selection be performed with multiply imputed data? *Stat Med* 2008;27:3227–46. doi:10.1002/sim.3177.
- [25] Mantel N. Why Stepdown Procedures in Variable Selection. *Technometrics* 1970;12:621–5. doi:10.1080/00401706.1970.10488701.
- [26] Donders AR, van der Heijden GJ, Stijnen T, Moons KG. Review: a gentle introduction to imputation of missing values. *J Clin Epidemiol* 2006;59:1087–91.
- [27] Royston P, Moons KGM, Altman DG, Vergouwe Y. Prognosis and prognostic research: Developing a prognostic model. *BMJ* 2009;338:b604. doi:10.1136/bmj.b604.
- [28] Sauerbrei W, Royston P, Binder H. Selection of important variables and determination of functional form for continuous predictors in multivariable model building. *Stat. Med.*, vol. 26, 2007, p. 5512–28. doi:10.1002/sim.3148.
- [29] Moons KGM, Altman DG, Vergouwe Y, Royston P. Prognosis and prognostic research: application and impact of prognostic models in clinical practice. *BMJ* 2009;338:b606. doi:10.1136/bmj.b606.
- [30] Altman DG, Vergouwe Y, Royston P, Moons KGM. Prognosis and prognostic research: validating a prognostic model. *BMJ* 2009;338:b605. doi:10.1136/bmj.b605.
- [31] Moons KGM, Royston P, Vergouwe Y, Grobbee DE, Altman DG. Prognosis and prognostic research: what, why, and how? *BMJ* 2009;338:b375. doi:10.1136/bmj.b375.
- [32] Sullivan LM, Massaro JM, D'Agostino RBS. Presentation of multivariate data for clinical use: The Framingham Study risk score functions. *Stat Med* 2004;23:1631–60. doi:10.1002/sim.1742.
- [33] Khorsandi S, Giorgakis E, Vilca-Melendez H, O'Grady J, Heneghan M, Aluvihare V, et al. Developing a donation after cardiac death risk index for adult and pediatric liver transplantation. *World J Transplant* 2017;Jun 24;7(3):203–12.

- doi:10.5500/wjt.v7.i3.203.
- [34] Slankamenac K, Graf R, Barkun J, Puhan M a, Clavien P-A. The comprehensive complication index: a novel continuous scale to measure surgical morbidity. *Ann Surg* 2013;258:1–7. doi:10.1097/SLA.0b013e318296c732.
- [35] Schlegel A, Linecker M, Kron P, Györi G, De Oliveira ML, Müllhaupt B, et al. Risk assessment in high and low MELD liver transplantation. *Am J Transplant* 2016:1–14. doi:10.1111/ajt.14065.
- [36] Belli LS, Berenguer M, Cortesi PA, Strazzabosco M, Rockenschaub SR, Martini S, et al. Delisting of liver transplant candidates with chronic hepatitis C after viral eradication: A European study. *J Hepatol* 2016;65:524–31. doi:10.1016/j.jhep.2016.05.010.
- [37] Briceño J, Ciria R, De La Mata M. Donor-recipient matching: Myths and realities. *J Hepatol* 2013;58:811–20. doi:10.1016/j.jhep.2012.10.020.
- [38] Dutkowski P, Schlegel A, Slankamenac K, Oberkofler CE, Adam R, Burroughs AK, et al. The use of fatty liver grafts in modern allocation systems: risk assessment by the balance of risk (BAR) score. *Ann Surg* 2012;256:861–9. doi:10.1097/SLA.0b013e318272dea2.
- [39] Liu ZJ, Gong JP, Yan LN. Quantitative estimation of the degree of hepatic macrovesicular steatosis in a disease-free population: A single-center experience in mainland China. *Liver Transplant* 2009;15:1605–12. doi:10.1002/lt.21812.
- [40] Schlegel A, Rougemont O De, Graf R, Clavien PA, Dutkowski P. Protective mechanisms of end-ischemic cold machine perfusion in DCD liver grafts. *J Hepatol* 2013;58:278–86.
- [41] Dutkowski P, Polak WG, Muiesan P, Schlegel A, Verhoeven CJ, Scalera I, et al. First Comparison of Hypothermic Oxygenated Perfusion Versus Static Cold Storage of Human Donation After Cardiac Death Liver Transplants: An International-matched Case Analysis. *Ann Surg* 2015;262:764–71. doi:10.1097/SLA.0000000000001473.
- [42] Schlegel A, Graf R, Clavien PA, Dutkowski P. Hypothermic oxygenated perfusion (HOPE) protects from biliary injury in a rodent model of DCD liver transplantation. *J Hepatol* 2013;59:984–91.
- [43] Schlegel A, Kron P, Dutkowski P. Hypothermic Oxygenated Liver Perfusion: Basic Mechanisms and Clinical Application. *Curr Transplant Reports* 2015;2:52–62. doi:10.1007/s40472-014-0046-1.
- [44] Ravikumar R, Jassem W, Mergental H, Heaton N, Mirza D, Perera MTPR, et al. Liver Transplantation After Ex Vivo Normothermic Machine Preservation: A Phase 1 (First-in-Man) Clinical Trial. *Am J Transplant* 2016;16:1779–87. doi:10.1111/ajt.13708.
- [45] Mergental H, Perera MTPR, Laing RW, Muiesan P, Isaac JR, Smith A, et al. Transplantation of Declined Liver Allografts Following Normothermic Ex-Situ Evaluation. *Am J Transplant* 2016;16:3235–45. doi:10.1111/ajt.13875.
- [46] Sutherland A, Oniscu G. Challenges and advances in optimizing liver allografts from donation after circulatory death donors. *J Nat Sci Biol Med* 2016;7:10–5. doi:10.4103/0976-9668.175017.
- [47] Kron P, Schlegel A, Mancina L, Clavien P, Dutkowski P. Hypothermic oxygenated perfusion (HOPE) for fatty liver grafts in rats and humans. *J Hepatol* 2017;Sep 1. doi:10.1016/j.jhep.2017.08.028.

## Figure Legends

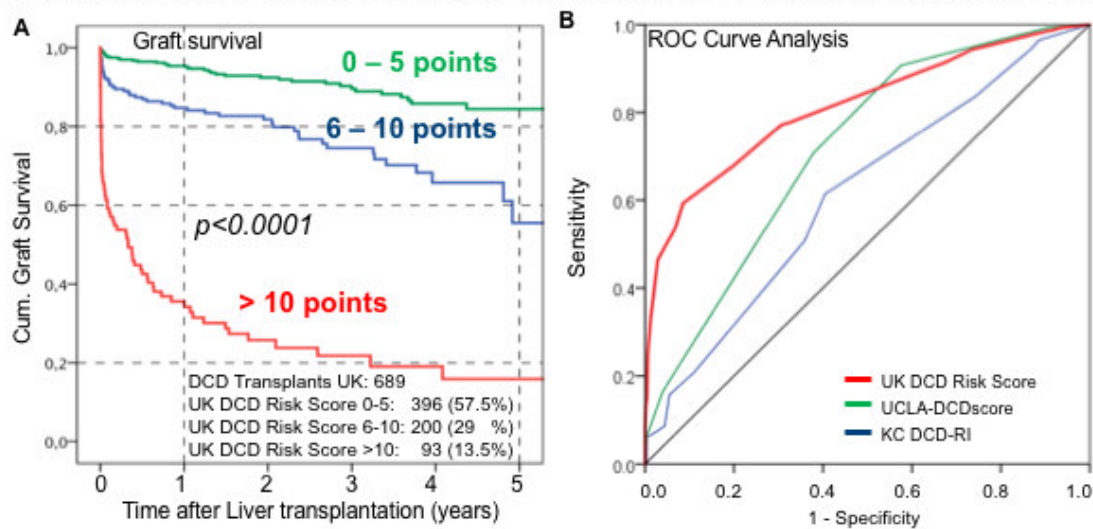
**Figure 1:** Five-year graft survival according to the UK-DCD-Risk-Score and ROC curve analysis (UK cohort). Kaplan-Meier Survival plots were developed for graft survival according to the 3 risk classes of the new score model (A). Comparisons between groups were made using the log-rank test. Discrimination is the ability of the risk score to differentiate between patients who do and do not experience graft loss. This measure was quantified by calculating the area under the receiver operating characteristic curve statistic (AUC). This is displayed in the ROC curve (B). The table compares the AUC values of the new model with previously described DCD scores from UCLA and KCH (C).

**Figure 2:** Validation of the UK DCD Risk score in UNOS region and Birmingham. Kaplan-Meier Survival plots for graft survival were developed to validate the new model in the UNOS DCD cohort (A). Comparisons between groups were made using the log-rank test. In addition, graph B displays graft survival in our local DCD liver transplant cohort in Birmingham. The area under the receiver operating characteristic curve statistic (AUC), obtained from the UNOS cohort parallels the values, we received from the development cohort in the UK. The table demonstrates a similar AUC in the UNOS cohort, when compared to the UK (C).

**Figure 3:** Prediction of graft loss by the UK DCD risk score in in all three cohorts, compared to other available DCD risk models. In the table, positive predictive value and false omission rate are shown together with the specificity of three different score models (A). Survival plots highlight the percentage of grafts which are lost with increasing score points, for the new prediction model in three different cohorts (UK, UNOS, Birmingham) compared to two existing models in UK (B).

ACCEPTED MANUSCRIPT

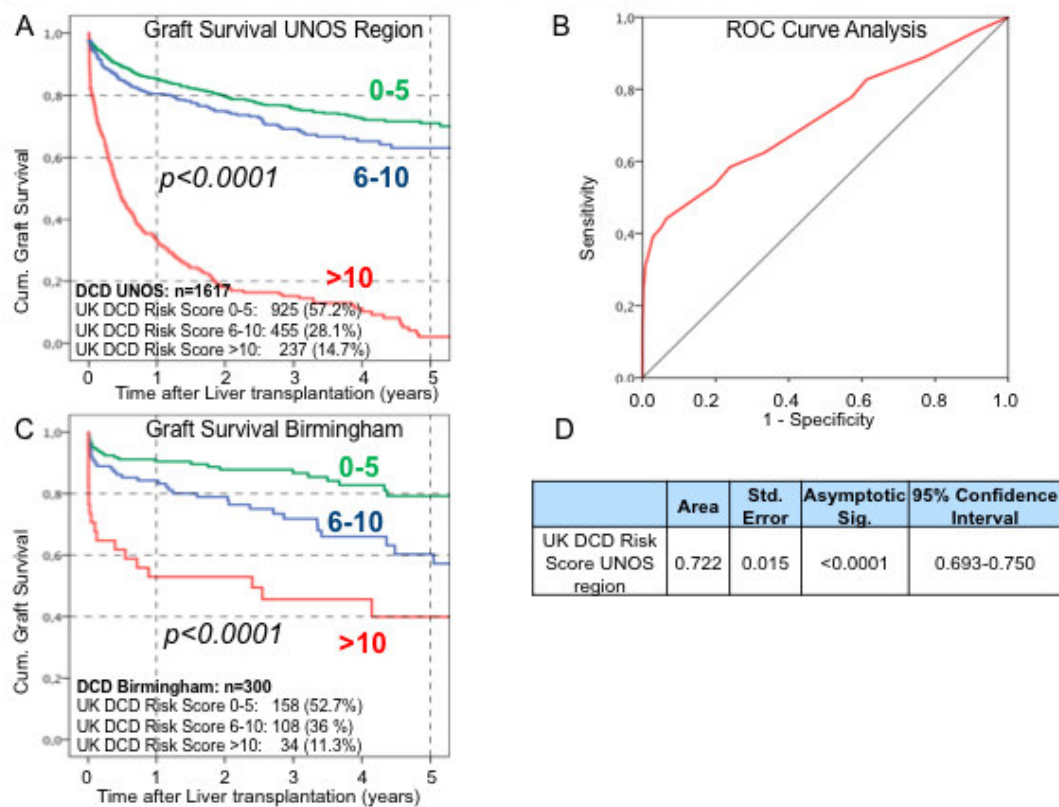
Figure 1: Five-year graft survival according to the UK-DCD-Risk-Score and ROC curve analysis (UK cohort)



C

Scores	Area	Std. Error	Asymptotic Sig.	95% Confidence Interval
UK DCD Risk Score	0.79	0.024	< 0.0001	0.744-0.839
KC DCD-RI	0.64	0.027	< 0.0001	0.562-0.668
UCLA-DCDscore	0.71	0.024	< 0.0001	0.663-0.757

Figure 2: Validation of the new UK DCD Risk score in UNOS region and in Birmingham



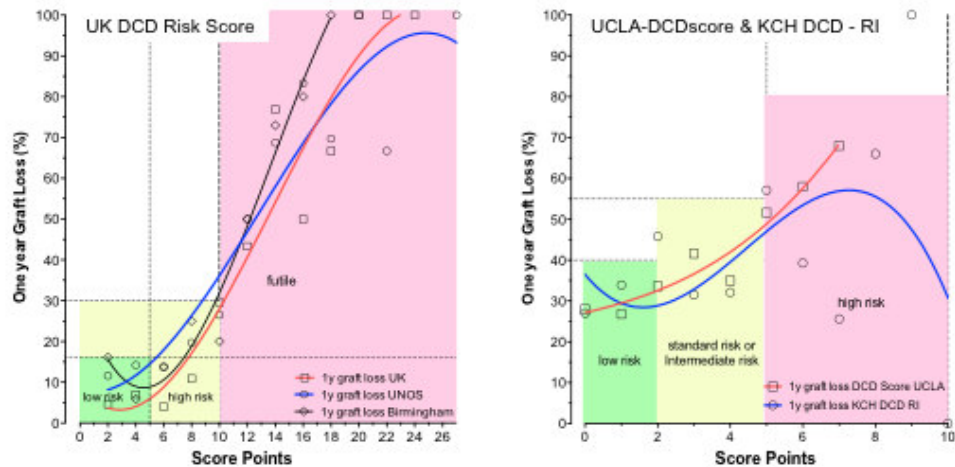
**Figure 3: Positive predictive value and false omission rate for graft loss of the in UK DCD risk score in 3 cohorts**

**A**

Score	Cohort	Score threshold	n	Positive predictive value <sup>+</sup>	False omission rate <sup>*</sup>	Delta	C statistic
DCD Risk score UK	UK	≤10	596		13.4%	57.5%	0.79
		>10	93	71.0%			
	UNOS	≤10	1380		22.7%	63.4%	0.72
		>10	237	86.1%			
KCH DCD RI	UK	≤4	501		17.2%	27.1%	0.64
		>4	97	44.3%			
UCLA-DCDscore	UK	≤4	572		19.2%	37.9%	0.71
		>4	42	57.1%			

<sup>+</sup>: Graft loss above the threshold. <sup>\*</sup>: Graft loss below threshold

**B** Prediction of one year graft loss by different DCD Scores



**Table 1: Donor, Graft and Recipient Characteristics in the entire DCD Liver transplantation cohort in UK, UNOS region and Birmingham.**

Parameters of DCD liver transplantation	UK	UNOS	Birmingham
	n=1153	n=1861	n=315
<b>Donor and Graft variables:</b>			
Age (years)	49 (35-59)	34 (21-47)	51 (36-62)
Body-Mass-Index (kg/m <sup>2</sup> )	25 (23-28)	25.1 (22.0-29.1)	25 (22.7-27.7)
Total warm ischemia time (min)	27 (22-31)	-	27 (22-32)
Functional warm ischemia time (fDWIT) (min)	17 (14-20)	14 (9-21)	17 (14-21)
- No. of donors with fDWIT > 20 min	254 (22%)	364 (19.6%)	82 (26%)
- No. of donors with fDWIT > 30 min	40 (3.5%)	124 (6.7%)	13 (4.1%)
Asystolic warm ischemia time (min)	13 (11-15)	-	12 (10-14)
Cold ischemia time (hrs)	7.1 (6-8.2)	7 (5.3-9)	7 (5.7-8.1)
- No. of grafts with CIT > 6hrs	853 (74%)	1145 (61.5%)	222 (70.5%)
<b>Recipient variables:</b>			
Age (years)	55 (48-61)	54 (49-60)	58 (51-64)
Body-Mass-Index (kg/m <sup>2</sup> )	27 (24-30)	27.4 (23.8-31.2)	27 (24-30)
lab-MELD score at transplantation (points)	15 (11-19)	16.4 (10.8-23.5)	13 (9-17)
UKELD score at transplantation (points)	53 (50-57)	-	53 (49-56)
BAR – Score at transplantation (points)	5 (3-8)	7 (3-10)	5 (3-7)
Follow-up (days)	865 (364-1704)	600 (160-1355)	936 (426-1602)

Data presented as median and IQR for continuous variables or as number and percent for categorical variables. BAR: Balance of Risk Score; BMI: Body-Mass-Index; CIT: cold ischemia time; fDWIT: functional donor warm ischemia time; MELD: Model of end stage liver disease; UKELD: United Kingdom model of End stage Liver Disease;

Table 2: Development of the Prediction Score based on multivariate Regression Analysis

Parameter	Category	Regression Coefficient $\beta$	$p$	Reference Value $W_i$ (Midpoint)	$\beta \times (W_{ij} - W_{reference})$	Risk Score
Donor age	$\leq 60y$	.084	0.001	46 ( $W_{1reference}$ )	0	0
	$> 60y$			66	1.688	2
Donor BMI	$\leq 25 \text{ kg/m}^2$	.519	0.0001	23 ( $W_{2reference}$ )	0	0
	$> 25 \text{ kg/m}^2$			28	2.598	3
Functional Donor warm ischemia	$\leq 20 \text{ min}$	.341	$<0.0001$	15 ( $W_{3reference}$ )	0	0
	$> 20 \text{ to } \leq 30 \text{ min}$			24	3.069	3
	$> 30 \text{ min}$			32	5.797	6
Cold ischemia time	$\leq 6h$	.791	0.001	5.5 ( $W_{4reference}$ )	0	0
	$> 6h$			7.7	1.740	2
Recipient age	$\leq 60y$	.241	0.0001	52 ( $W_{5reference}$ )	0	0
	$> 60y$			64	2.892	3
Recipient lab MELD	$\leq 25 \text{ points}$	.109	0.0001	14 ( $W_{6reference}$ )	0	0
	$> 25 \text{ points}$			30	1.744	2
Retransplantation	no	8.571	$<0.0001$	0 ( $W_{7reference}$ )	0	0
	yes			1	8.571	9
Total Score Points						0-27

BMI: Body-Mass-Index; CIT: Cold ischemia time; fDWIT: functional donor warm ischemia time; MELD: Model of end stage liver disease; y: years; min: minutes; h: hours;  $\beta$ : regression coefficient; The imputed data sets were combined and the point system was developed according to the Framingham risk scheme [32]. For each predictor, the median of all values (Midpoint  $W_{reference} - W_{reference}$ ) below and above the threshold has been calculated. The Midpoint for the cohort below each threshold ( $W_{1-reference}$ ) is subtracted from the midpoint of all values above the threshold. The factor  $\beta$  is multiplied with the difference ( $W_{ij} - W_{reference}$ ), separately for each factor to develop the score points [32].

**Table 3: Potential Combinations of additional Key risk factors providing a UK DCD Risk score  $\leq 10$  or  $> 10$  points.**

	Potential Combinations of Risk factors	Points
DCD Risk Score $\leq 10$ points	No Retransplantation [0] + recipient MELD $\leq 25$ points [0] + recipient age $\leq 60y$ [0] + cold ischemia time $> 6h$ [2] + functional donor warm ischemia $> 20$ to $\leq 30$ min [3] + donor age $\leq 60y$ [0] + donor BMI $\leq 25$ [0]	5
	No Retransplantation [0] + recipient MELD $> 25$ points [2] + recipient age $\leq 60y$ [0] + cold ischemia time $\leq 6h$ [0] + functional donor warm ischemia $> 30$ min [6] + donor age $\leq 60y$ [0] + donor BMI $\leq 25$ [0]	8
	No Retransplantation [0] + recipient MELD $> 25$ points [2] + recipient age $> 60y$ [3] + cold ischemia time $> 6h$ [2] + any functional donor warm ischemia $> 20$ to $\leq 30$ min [3] + donor age $\leq 60y$ [0] + donor BMI $\leq 25$ [0]	10
	No Retransplantation [0] + any functional donor warm ischemia up to $\leq 30$ min [0-6] + any donor age [0-2] + any recipient MELD [0-2]	10
	No Retransplantation [0] + functional donor warm ischemia $> 20$ to $\leq 30$ min [0-3] + any donor age [0-2] + any donor BMI [0-3] + any recipient MELD [0-2]	10
DCD Risk Score $> 10$ points	Retransplantation [9] + recipient MELD $\leq 25$ points [0] + recipient age $\leq 60y$ [0] + cold ischemia time $\leq 6h$ [0] + functional donor warm ischemia $\leq 20$ min [0] + donor age $\leq 60y$ [0] + donor BMI $\leq 25$ [0]	9
	No Retransplantation [0] + recipient MELD $> 25$ points [2] + recipient age $> 60y$ [3] + cold ischemia time $> 6h$ [2] + functional donor warm ischemia $> 20$ to $\leq 30$ min [3] + donor age $> 60y$ [2] + donor BMI $\leq 25$ [0]	12
	No Retransplantation [0] + recipient MELD $> 25$ points [2] + recipient age $\leq 60y$ [0] + cold ischemia time $> 6h$ [2] + functional donor warm ischemia $> 30$ min [6] + donor age $> 60y$ [2] + donor BMI $\leq 25$ [0]	12
	No Retransplantation [0] + recipient MELD $> 25$ points [2] + recipient age $> 60y$ [3] + cold ischemia time $> 6h$ [2] + functional donor warm ischemia $> 30$ min [6] + donor age $> 60y$ [2] + donor BMI $\leq 25$ [0]	15
	Retransplantation [9] + recipient MELD $> 25$ points [2] + recipient age $\leq 60y$ [0] + cold ischemia time $\leq 6h$ [0] + functional donor warm ischemia $\leq 20$ min [0] + donor age $\leq 60y$ [0] + donor BMI $\leq 25$ [0]	11
	Retransplantation [9] + recipient MELD $> 25$ points [2] + recipient age $\leq 60y$ [0] + cold ischemia time $> 6h$ [2] + functional donor warm ischemia $> 20$ to $\leq 30$ min [3] + donor age $> 60y$ [2] + donor BMI $\leq 25$ [0]	19

\*Numbers in parenthesis correspond to DCD Risk Score points., BMI: Body-Mass-Index; CIT: cold ischemia time; fDWIT: functional donor warm ischemia time; MELD: Model of end stage liver disease; UKELD: United Kingdom model of End stage Liver Disease; y: years; min: minutes; h: hours;

Table 4: Cause of graft loss according to the UK DCD Risk score

Outcome Parameter	Overall	Low Risk (0-5 points)	High Risk (6-10 points)	Futile (>10 points)	P value	
					Low Risk vs. High Risk	High Risk vs. Futile
<b>UK</b>	<b>n=689</b>	<b>n=396</b>	<b>n=200</b>	<b>n=93</b>		
Cause of graft failure						
- PNF	29 (4.2%)	2 (0.5%)	2 (1%)	25 (26.9%)	0.6053	<b>0.0001</b>
- HAT	14 (2%)	1 (0.3%)	4 (2%)	9 (9.7%)	<b>0.0451</b>	<b>0.005</b>
- Biliary (IC)	26 (3.8%)	5 (1.3%)	6 (3%)	15 (16.2%)	0.1942	<b>0.0001</b>
One-year graft survival (%)	84.5%	95.5%	85%	37%	<b>&lt; 0.0001</b>	<b>&lt; 0.0001</b>
<b>UNOS</b>	<b>n=1617</b>	<b>n=925</b>	<b>n=455</b>	<b>n=237</b>		
Cause of graft failure (n%)						
- PNF	87 (5.4%)	21 (2.3%)	12 (2.6%)	54 (22.8%)	0.7090	<b>0.0001</b>
- HAT	32 (2.0%)	7 (0.7%)	2 (0.4%)	23 (9.7%)	0.7260	<b>0.0001</b>
- Biliary (IC)	58 (3.6%)	9 (1%)	4 (0.9%)	45 (19%)	1.0	<b>0.0001</b>
One-year graft survival (%)	75.3%	85%	80%	33%	<b>&lt; 0.0001</b>	<b>&lt; 0.0001</b>
<b>Birmingham</b>	<b>n=300</b>	<b>n=158</b>	<b>n=108</b>	<b>n=34</b>		
Cause of graft failure (n%)						
- PNF	9 (3%)	2 (1.3%)	2 (1.9%)	5 (14.7%)	1.0	<b>0.0088</b>
- HAT	17 (5.7%)	7 (4.4%)	6 (5.6%)	4 (11.8%)	0.7746	0.1330
- Biliary (IC)	19 (6.3%)	5 (3.2%)	7 (6.5%)	7 (20.6%)	0.2362	<b>0.0413</b>
One-year graft survival (%)	84.5%	91%	85%	53%	<b>&lt; 0.0001</b>	<b>&lt; 0.0001</b>

Data presented as number and percent for categorical variables, HAT: Hepatic Artery Thrombosis; IC: Ischemic cholangiopathy; PNF: Primary non-Function; UK: United Kingdom; UNOS: United network of organ sharing;

## The UK-DCD-Risk-Score – A new proposal to define futility in DCD liver transplantation

Andrea Schlegel<sup>1</sup>, Marit Kalisvaart<sup>1</sup>, Irene Scalera<sup>1</sup>, Richard W Laing<sup>1</sup>, Hynek Mergental<sup>1</sup>,  
Darius F Mirza<sup>1</sup>, Thamara Perera<sup>1</sup>, John Isaac<sup>1</sup>, Philipp Dutkowski<sup>2</sup>, Paolo Muiesan<sup>1\*</sup>

<sup>1</sup> The Liver Unit, Queen Elizabeth University Hospital Birmingham, United Kingdom

<sup>2</sup> Department of Surgery and Transplantation, Swiss HPB Centre, University Hospital Zurich, Switzerland

### Highlights

- By combining a few major donor and recipient parameters, we developed a simple score system, the UK-DCD-Risk-Score, which best stratifies recipient graft loss after DCD liver transplantation in both, the national UK (NHSBT) and US (UNOS) databases.
- Three risk groups (low risk: 0-5 points; high risk: >5 – 10 points; futile: > 10 points) are proved to be highly discriminatory for primary non-function (PNF) and ischemic cholangiopathy (IC).
- This new model offers a great potential to better decide which DCD graft should be rejected or may benefit from functional assessment and further optimization by machine perfusion.

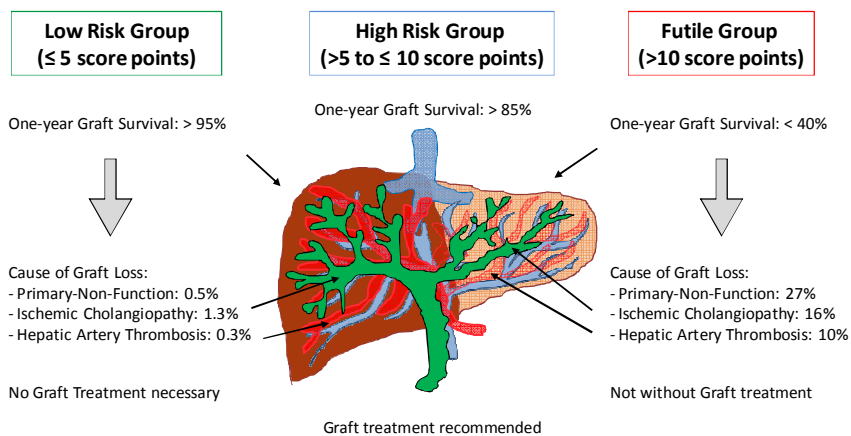
### Correspondence:

Professor Paolo Muiesan<sup>\*</sup>  
Consultant Liver Transplant Surgeon  
The Liver Unit, Queen Elizabeth hospital Birmingham  
Edgbaston, Birmingham  
United Kingdom  
B15 2TH  
E-mail - [Paolo.Muiesan@uhb.nhs.uk](mailto:Paolo.Muiesan@uhb.nhs.uk)  
Telephone - 0044 12137 1  
Fax - 0044 12141 41833

JHE-D-17-00423\_R1

## The UK-DCD-Risk-Score – A new proposal to define futility in DCD liver transplantation

Parameters of UK-DCD-Risk-Score: Donor age, Donor BMI, functional Donor warm ischemia, Cold storage, Recipient age, Recipient lab MELD, Re-transplantation



ACCEPTED MANUSCRIPT

CRIPT